



**THE RITZ-CARLTON
RESIDENCES**

NAPLES

BAY RESIDENCES WEST 01

3 Bedrooms • 3.5 Baths • 10-foot Ceilings

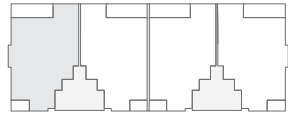
Owner's Suite with His and Her Wardrobe

Great Room • Private Elevator

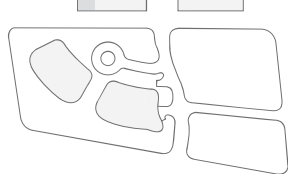
Private Lobby • Foyer

Expansive Terraces

Living Area	3,089 sq.ft.
Terraces	414 sq.ft.
Total Residence	3,503 sq.ft.



WEST EAST



**STOCK
RESIDENCES**

ORAL REPRESENTATIONS CANNOT BE RELIED UPON AS CORRECTLY STATING THE REPRESENTATIONS OF THE DEVELOPER. FOR CORRECT REPRESENTATIONS REFERENCE SHOULD BE MADE TO THE DOCUMENTS REQUIRED BY SECTION 718.503, FLORIDA STATUTES, TO BE FURNISHED BY A DEVELOPER TO A BUYER OR LESSEE. STATED LIVING AREA IS MEASURED TO THE EXTERIOR FACE OF EXTERIOR WALLS, WITHOUT EXCLUDING AREAS THAT MAY BE OCCUPIED BY COLUMNS OR OTHER STRUCTURAL COMPONENTS. THIS METHOD OF MEASUREMENT VARIES FROM, AND IS LARGER THAN, THE DIMENSIONS THAT WOULD BE DETERMINED BY USING THE DESCRIPTION AND THE DEFINITION OF THE UNIT SET FORTH IN THE DECLARATION (WHICH GENERALLY ONLY INCLUDES THE INTERIOR AIRSPACE BETWEEN THE PERIMETER WALLS AND EXCLUDES STRUCTURAL COMPONENTS). ALL DIMENSIONS ARE APPROXIMATE AND MAY VARY WITH ACTUAL CONSTRUCTION. MEASUREMENTS OF ROOMS/TERRACES SET FORTH ON THIS FLOOR PLAN ARE TAKEN AT THE GREATEST POINTS OF EACH ROOM/TERRACE (AS IF THE ROOM WERE A PERFECT RECTANGLE), WITHOUT REGARD FOR ANY CUTOUTS OR IRREGULARITIES. ACCORDINGLY, THE AREA OF THE ACTUAL ROOM WILL TYPICALLY BE SMALLER THAN THE PRODUCT OBTAINED BY MULTIPLYING THE STATED LENGTH TIMES WIDTH. ALL FLOOR PLANS AND DEVELOPMENT PLANS ARE SUBJECT TO CHANGE. THE DEVELOPER EXPRESSLY RESERVES THE RIGHT TO MAKE MODIFICATIONS, REVISIONS, AND CHANGES WITHOUT NOTICE. ALL SPECIFICATIONS OF FURNISHINGS, APPLIANCES, BUILDINGS, COUNTERTOPS, SOFFITS, FLOOR COVERINGS, LIGHTING, LANDSCAPING AND OTHER MATTERS OF DETAIL, INCLUDING, WITHOUT LIMITATION, ITEMS OF FINISH AND DECORATION, ARE CONCEPTUAL ONLY AND ARE NOT NECESSARILY INCLUDED IN EACH UNIT. CONSULT YOUR PROSPECTUS AND PURCHASE AGREEMENT. THE RITZ-CARLTON RESIDENCES, NAPLES ARE NOT OWNED, DEVELOPED OR SOLD BY THE RITZ-CARLTON HOTEL COMPANY, L.L.C. OR ITS AFFILIATES ("RITZ-CARLTON"). STOCK RESIDENCES USES THE RITZ-CARLTON MARKS UNDER LICENSE FROM THE RITZ-CARLTON HOTEL COMPANY, L.L.C. WHICH HAS NOT CONFIRMED THE ACCURACY OF ANY OF THE STATEMENTS OR REPRESENTATIONS MADE HEREIN.



**THE RITZ-CARLTON
RESIDENCES**

NAPLES

BAY RESIDENCES WEST 02

3 Bedrooms • 3.5 Baths • 10-foot Ceilings

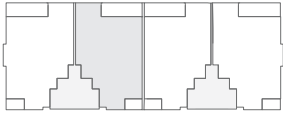
Owner's Suite with His and Her Wardrobe

Great Room • Private Elevator

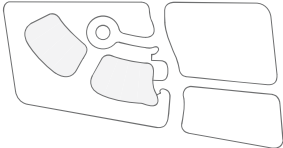
Private Lobby • Foyer

Expansive Terraces

Living Area	3,057 sq.ft.
Terraces	407 sq.ft.
Total Residence	3,464 sq.ft.



WEST EAST



**STOCK
RESIDENCES**

ORAL REPRESENTATIONS CANNOT BE RELIED UPON AS CORRECTLY STATING THE REPRESENTATIONS OF THE DEVELOPER. FOR CORRECT REPRESENTATIONS REFERENCE SHOULD BE MADE TO THE DOCUMENTS REQUIRED BY SECTION 718.503, FLORIDA STATUTES, TO BE FURNISHED BY A DEVELOPER TO A BUYER OR LESSEE. STATED LIVING AREA IS MEASURED TO THE EXTERIOR FACE OF EXTERIOR WALLS, WITHOUT EXCLUDING AREAS THAT MAY BE OCCUPIED BY COLUMNS OR OTHER STRUCTURAL COMPONENTS. THIS METHOD OF MEASUREMENT VARIES FROM, AND IS LARGER THAN, THE DIMENSIONS THAT WOULD BE DETERMINED BY USING THE DESCRIPTION AND THE DEFINITION OF THE UNIT SET FORTH IN THE DECLARATION (WHICH GENERALLY ONLY INCLUDES THE INTERIOR AIRSPACE BETWEEN THE PERIMETER WALLS AND EXCLUDES STRUCTURAL COMPONENTS). ALL DIMENSIONS ARE APPROXIMATE AND MAY VARY WITH ACTUAL CONSTRUCTION. MEASUREMENTS OF ROOMS/TERRACES SET FORTH ON THIS FLOOR PLAN ARE TAKEN AT THE GREATEST POINTS OF EACH ROOM/TERRACE (AS IF THE ROOM WERE A PERFECT RECTANGLE), WITHOUT REGARD FOR ANY CUT-OUTS OR IRREGULARITIES. ACCORDINGLY, THE AREA OF THE ACTUAL ROOM WILL TYPICALLY BE SMALLER THAN THE PRODUCT OBTAINED BY MULTIPLYING THE STATED LENGTH TIMES WIDTH. ALL FLOOR PLANS AND DEVELOPMENT PLANS ARE SUBJECT TO CHANGE. THE DEVELOPER EXPRESSLY RESERVES THE RIGHT TO MAKE MODIFICATIONS, REVISIONS, AND CHANGES WITHOUT NOTICE. ALL DEPICTIONS OF FURNISHINGS, APPLIANCES, BUILT-INS, COUNTERTOPS, SOFFITS, FLOOR COVERINGS, LIGHTING, LANDSCAPING AND OTHER MATTERS OF DETAIL, INCLUDING, WITHOUT LIMITATION, ITEMS OF FINISH AND DECORATION, ARE CONCEPTUAL ONLY AND ARE NOT NECESSARILY INCLUDED IN EACH UNIT. CONSULT YOUR PROSPECTUS AND PURCHASE AGREEMENT. THE RITZ-CARLTON RESIDENCES, NAPLES ARE NOT OWNED, DEVELOPED OR SOLD BY THE RITZ-CARLTON HOTEL COMPANY, L.L.C. OR ITS AFFILIATES ("RITZ-CARLTON"). STOCK RESIDENCES USES THE RITZ-CARLTON MARKS UNDER LICENSE FROM THE RITZ-CARLTON HOTEL COMPANY, L.L.C. WHICH HAS NOT CONFIRMED THE ACCURACY OF ANY OF THE STATEMENTS OR REPRESENTATIONS MADE HEREIN.



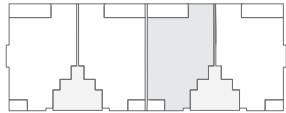
**THE RITZ-CARLTON
RESIDENCES**

NAPLES

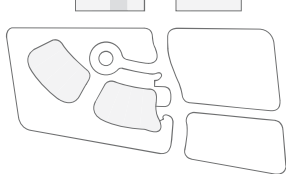
BAY RESIDENCES WEST 03

3 Bedrooms • 3.5 Baths • 10-foot Ceilings
Owner's Suite with His and Her Wardrobe
Great Room • Private Elevator
Private Lobby • Foyer
Expansive Terraces

Living Area	3,057 sq.ft.
Terraces	407 sq.ft.
Total Residence	3,464 sq.ft.



WEST EAST



ORAL REPRESENTATIONS CANNOT BE RELIED UPON AS CORRECTLY STATING THE REPRESENTATIONS OF THE DEVELOPER. FOR CORRECT REPRESENTATIONS REFERENCE SHOULD BE MADE TO THE DOCUMENTS REQUIRED BY SECTION 718.503, FLORIDA STATUTES, TO BE FURNISHED BY A DEVELOPER TO A BUYER OR LESSEE. STATED LIVING AREA IS MEASURED TO THE EXTERIOR FACE OF EXTERIOR WALLS, WITHOUT EXCLUDING AREAS THAT MAY BE OCCUPIED BY COLUMNS OR OTHER STRUCTURAL COMPONENTS. THIS METHOD OF MEASUREMENT VARIES FROM, AND IS LARGER THAN, THE DIMENSIONS THAT WOULD BE DETERMINED BY USING THE DESCRIPTION AND THE DEFINITION OF THE UNIT SET FORTH IN THE DECLARATION (WHICH GENERALLY ONLY INCLUDES THE INTERIOR AIRSPACE BETWEEN THE PERIMETER WALLS AND EXCLUDES STRUCTURAL COMPONENTS). ALL DIMENSIONS ARE APPROXIMATE AND MAY VARY WITH ACTUAL CONSTRUCTION. MEASUREMENTS OF ROOMS/TERRACES SET FORTH ON THIS FLOOR PLAN ARE TAKEN AT THE GREATEST POINTS OF EACH ROOM/TERRACE (AS IF THE ROOM WERE A PERFECT RECTANGLE), WITHOUT REGARD FOR ANY CUTOUTS OR IRREGULARITIES. ACCORDINGLY, THE AREA OF THE ACTUAL ROOM WILL TYPICALLY BE SMALLER THAN THE PRODUCT OBTAINED BY MULTIPLYING THE STATED LENGTH TIMES WIDTH. ALL FLOOR PLANS AND DEVELOPMENT PLANS ARE SUBJECT TO CHANGE. THE DEVELOPER EXPRESSLY RESERVES THE RIGHT TO MAKE MODIFICATIONS, REVISIONS, AND CHANGES WITHOUT NOTICE. ALL DEPICTIONS OF FURNISHINGS, APPLIANCES, BUILDINGS, COUNTERS, SOFFITS, FLOOR COVERINGS, LIGHTING, LANDSCAPING AND OTHER MATTERS OF DETAIL, INCLUDING, WITHOUT LIMITATION, ITEMS OF FINISH AND DECORATION, ARE CONCEPTUAL ONLY AND ARE NOT NECESSARILY INCLUDED IN EACH UNIT. CONSULT YOUR PROSPECTUS AND PURCHASE AGREEMENT. THE RITZ-CARLTON RESIDENCES, NAPLES ARE NOT OWNED, DEVELOPED OR SOLD BY THE RITZ-CARLTON HOTEL COMPANY, L.L.C. OR ITS AFFILIATES ("RITZ-CARLTON"). STOCK RESIDENCES USES THE RITZ-CARLTON MARKS UNDER LICENSE FROM THE RITZ-CARLTON HOTEL COMPANY, L.L.C. WHICH HAS NOT CONFIRMED THE ACCURACY OF ANY OF THE STATEMENTS OR REPRESENTATIONS MADE HEREIN.



**THE RITZ-CARLTON
RESIDENCES**

NAPLES

BAY RESIDENCES WEST 04

3 Bedrooms • 3.5 Baths • 10-foot Ceilings

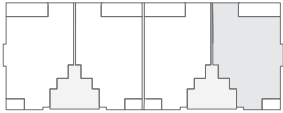
Owner's Suite with His and Her Wardrobe

Great Room • Private Elevator

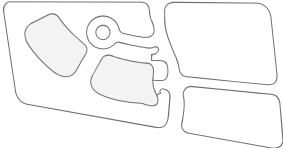
Private Lobby • Foyer

Expansive Terraces

Living Area	3,089 sq.ft.
Terraces	414 sq.ft.
Total Residence	3,503 sq.ft.



WEST EAST



**STOCK
RESIDENCES**

ORAL REPRESENTATIONS CANNOT BE RELIED UPON AS CORRECTLY STATING THE REPRESENTATIONS OF THE DEVELOPER. FOR CORRECT REPRESENTATIONS REFERENCE SHOULD BE MADE TO THE DOCUMENTS REQUIRED BY SECTION 718.503, FLORIDA STATUTES, TO BE FURNISHED BY A DEVELOPER TO A BUYER OR LESSEE. STATED LIVING AREA IS MEASURED TO THE EXTERIOR FACE OF EXTERIOR WALLS, WITHOUT EXCLUDING AREAS THAT MAY BE OCCUPIED BY COLUMNS OR OTHER STRUCTURAL COMPONENTS. THIS METHOD OF MEASUREMENT VARIES FROM, AND IS LARGER THAN, THE DIMENSIONS THAT WOULD BE DETERMINED BY USING THE DESCRIPTION AND THE DEFINITION OF THE UNIT SET FORTH IN THE DECLARATION (WHICH GENERALLY ONLY INCLUDES THE INTERIOR AIRSPACE BETWEEN THE PERIMETER WALLS AND EXCLUDES STRUCTURAL COMPONENTS). ALL DIMENSIONS ARE APPROXIMATE AND MAY VARY WITH ACTUAL CONSTRUCTION. MEASUREMENTS OF ROOMS/TERRACES SET FORTH ON THIS FLOOR PLAN ARE TAKEN AT THE GREATEST POINTS OF EACH ROOM/TERRACE (AS IF THE ROOM WERE A PERFECT RECTANGLE), WITHOUT REGARD FOR ANY CUTOUTS OR IRREGULARITIES. ACCORDINGLY, THE AREA OF THE ACTUAL ROOM WILL TYPICALLY BE SMALLER THAN THE PRODUCT OBTAINED BY MULTIPLYING THE STATED LENGTH TIMES WIDTH. ALL FLOOR PLANS AND DEVELOPMENT PLANS ARE SUBJECT TO CHANGE. THE DEVELOPER EXPRESSLY RESERVES THE RIGHT TO MAKE MODIFICATIONS, REVISIONS, AND CHANGES WITHOUT NOTICE. ALL DEPICTIONS OF FURNISHINGS, APPLIANCES, BUILDINGS, COUNTERTOPS, SOFFITS, FLOOR COVERINGS, LIGHTING, LANDSCAPING AND OTHER MATTERS OF DETAIL, INCLUDING, WITHOUT LIMITATION, ITEMS OF FINISH AND DECORATION, ARE CONCEPTUAL ONLY AND ARE NOT NECESSARILY INCLUDED IN EACH UNIT. CONSULT YOUR PROSPECTUS AND PURCHASE AGREEMENT. THE RITZ-CARLTON RESIDENCES, NAPLES ARE NOT OWNED, DEVELOPED OR SOLD BY THE RITZ-CARLTON HOTEL COMPANY, L.L.C. OR ITS AFFILIATES ("RITZ-CARLTON"). STOCK RESIDENCES USES THE RITZ-CARLTON MARKS UNDER LICENSE FROM THE RITZ-CARLTON HOTEL COMPANY, L.L.C. WHICH HAS NOT CONFIRMED THE ACCURACY OF ANY OF THE STATEMENTS OR REPRESENTATIONS MADE HEREIN.