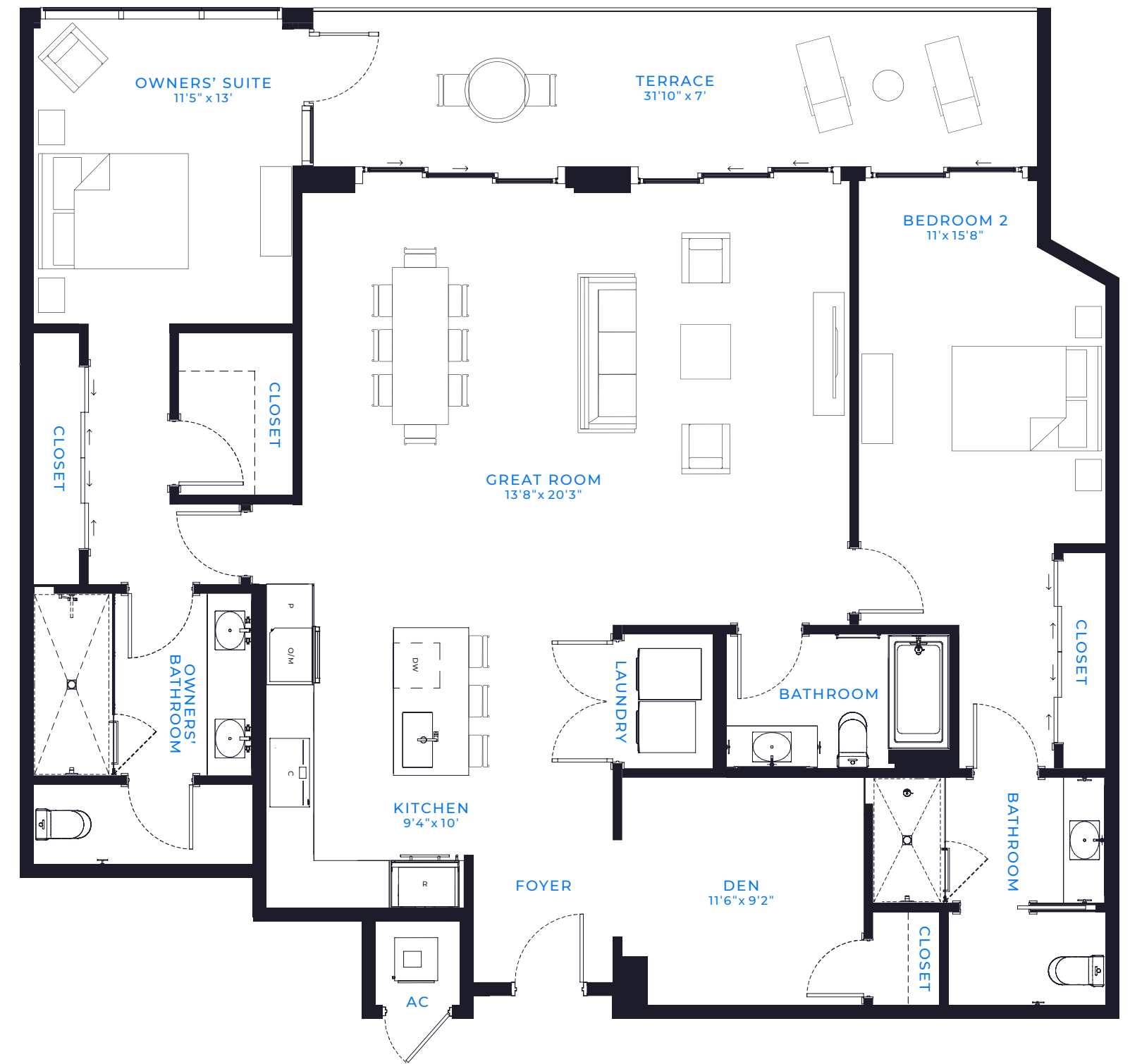


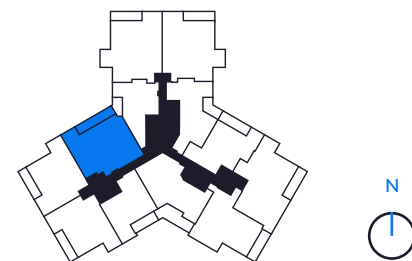
ST. TROPEZ OPEN

FLOORS 6 - 16



2 BED / 3 BATH + DEN

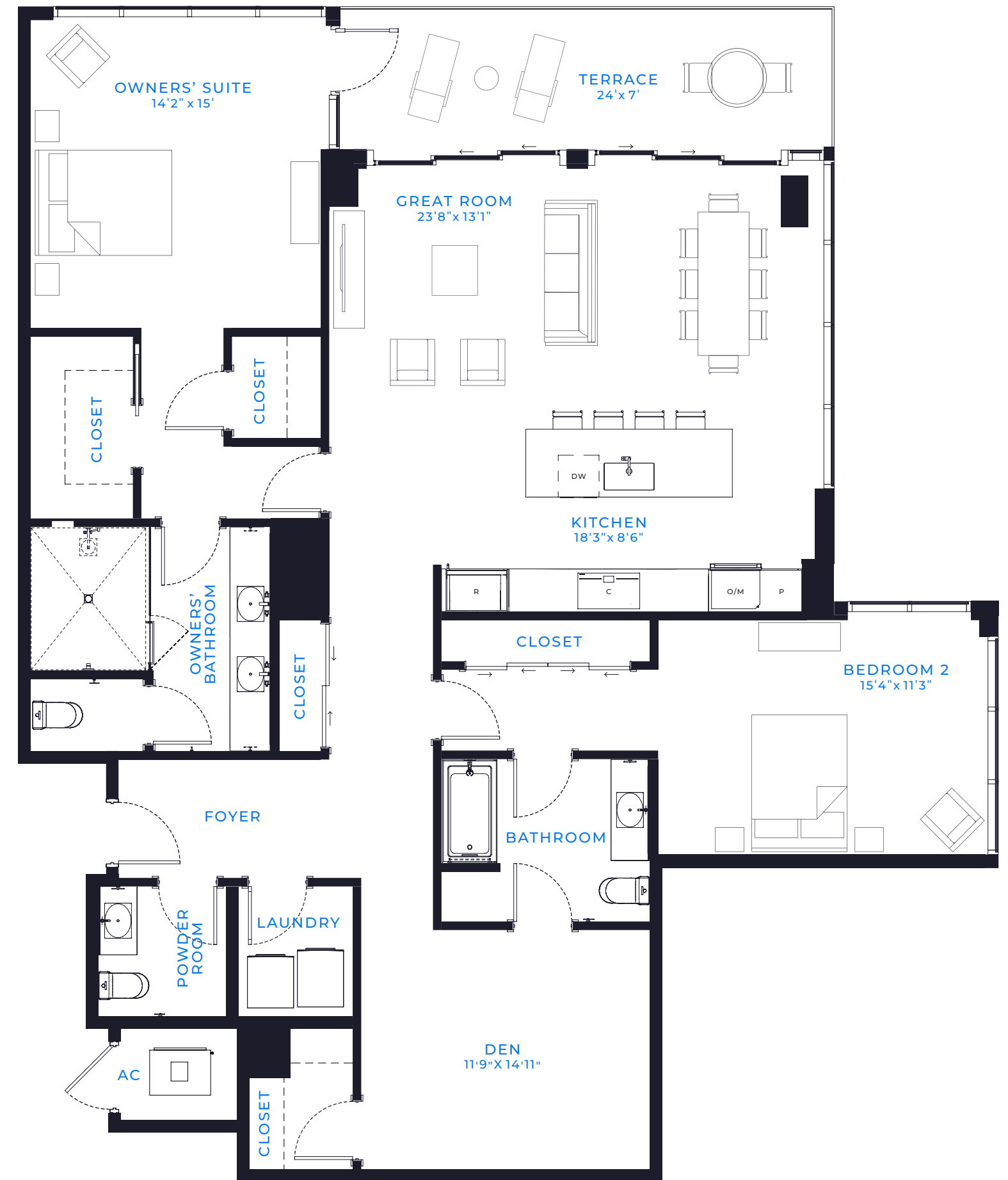
AIR CONDITIONED: 1,792 SQ. FT.
 TERRACE: 222 SQ. FT.
TOTAL LIVING SPACE: 2,014 SQ. FT.
187 SQ. MT.



There are various methods for calculating the total square footage of a condominium unit, and depending on the method of calculation, the quoted square footage of a condominium unit may vary by more than a nominal amount. The dimensions as shown are measured to the exterior boundaries of the exterior walls and the centerline of interior demising walls and, in fact, are larger than the dimensions of the "Unit" as defined in the Declaration of Condominium for each tower of Marina Pointe which is measured using interior measurements.

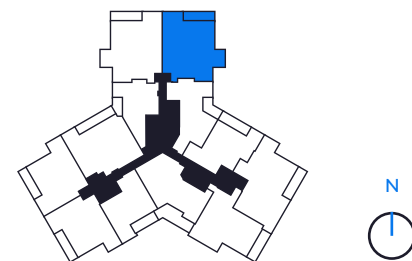
MONACO SALON

FLOORS 2 - 4



2 BED / 2.5 BATH + DEN

AIR CONDITIONED: 2,013 SQ. FT.
 TERRACE: 292 SQ. FT.
TOTAL LIVING SPACE: 2,305 SQ. FT.
 214 SQ. MT.



There are various methods for calculating the total square footage of a condominium unit, and depending on the method of calculation, the quoted square footage of a condominium unit may vary by more than a nominal amount. The dimensions as shown are measured to the exterior boundaries of the exterior walls and the centerline of interior demising walls and, in fact, are larger than the dimensions of the "Unit" as defined in the Declaration of Condominium for each tower of Marina Pointe which is measured using interior measurements.

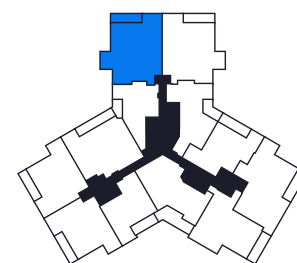
NICE SALON

FLOORS 2 - 4



2 BED / 2.5 BATH + DEN

AIR CONDITIONED: 2,013 SQ. FT.
 TERRACE: 292 SQ. FT.
TOTAL LIVING SPACE: 2,305 SQ. FT.
 214 SQ. MT.



There are various methods for calculating the total square footage of a condominium unit, and depending on the method of calculation, the quoted square footage of a condominium unit may vary by more than a nominal amount. The dimensions as shown are measured to the exterior boundaries of the exterior walls and the centerline of interior demising walls and, in fact, are larger than the dimensions of the "Unit" as defined in the Declaration of Condominium for each tower of Marina Pointe which is measured using interior measurements.