

ASTER

3 Bedroom | 3.5 Bath
Floor Plan: B3 Penthouse

Upper Level



Lower Level



2321 SQ FT

Lower Level:

Living Room: 16'0" x 17'4"

Dining Room: 12'9" x 12'9"

Primary Suite 1: 13'3" x 13'9"

Level Balcony: 42'6" x 5'6"

Upper Level:

Primary Suite 2: 12'9" x 13'7"

Primary Suite 3: 13'3" x 13'7"

Primary Suite 2 Balcony: 11'6" x 3'0"

Primary Suite 3 Balcony: 11'6" x 3'0"



The information contained herein, including without limitation, any and all artist's or conceptual renderings, plans, stated footages and other information reflected are based on preliminary construction plans, which are subject to change without notice and will vary with actual construction.

ASTER

3 Bedroom | 3.5 Bath
Floor Plan: B5 Penthouse

1861 SQ FT

Lower Level:

Living Room: 13'0" x 15'10"

Dining Room: 12'0" x 10'6"

Primary Suite 1: 11'1" x 13'0"

Lower Level Balcony: 36'1" x 5'6"

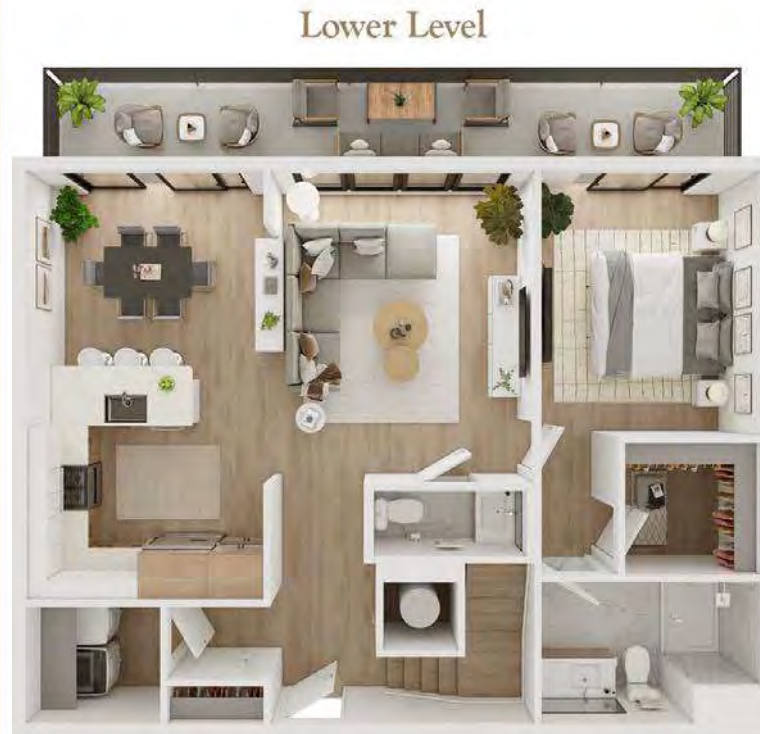
Upper Level:

Primary Suite 2: 12'0" x 12'11"

Primary Suite 3: 11'1" x 13'1"

Primary Suite 2 Balcony: 12'0" x 3'0"

Primary Suite 3 Balcony: 11'1" x 3'0"



The information contained herein, including without limitation, any and all artist's or conceptual renderings, plans, stated footages and other information reflected are based on preliminary construction plans, which are subject to change without notice and will vary with actual construction.

ASTER

3 Bedroom | 3.5 Bath
Floor Plan: B4 Penthouse

Upper Level



Lower Level



1965 SQ FT

Lower Level:

Living Room: 15'0" x 17'0"

Dining Room: 13'3" x 7'0"

Primary Suite 1: 12'9" x 13'6"

Lower Level Balcony: 41'0" x 5'6"

Upper Level:

Primary Suite 2: 12'9" x 13'7"

Primary Suite 3: 13'3" x 13'0"



The information contained herein, including without limitation, any and all artist's or conceptual renderings, plans, stated footages and other information reflected are based on preliminary construction plans, which are subject to change without notice and will vary with actual construction.

ASTER

3 Bedroom | 3.5 Bath
Floor Plan: B6 Penthouse

2008 SQ FT

Lower Level:

Living Room: 16'0" x 15'0"

Dining Room: 13'3" x 7'0"

Primary Suite 1: 12'9" x 13'6"

Lower Level Balcony: 42'0" x 5'6"

Upper Level:

Primary Suite 2: 12'0" x 13'7"

Primary Suite 3: 12'7" x 13'0"

Primary Suite 2 Balcony: 12'0" x 3'0"

Primary Suite 3 Balcony: 12'0" x 3'0"

Lower Level



Upper Level



The information contained herein, including without limitation, any and all artist's or conceptual renderings, plans, stated footages and other information reflected are based on preliminary construction plans, which are subject to change without notice and will vary with actual construction.

ASTER

3 Bedroom | 3.5 Bath
Floor Plan: B7 Penthouse

2111 SQ FT

Lower Level:

Living/Dining Room: 24'0" x 18'2"

Primary Suite 1: 13'3" x 13'3"

Dining Room Balcony: 13'3" x 7'0"

Upper Level:

Primary Suite 2: 13'0" x 13'0"

Primary Suite 3: 12'0" x 13'4"

Primary Suite 2 Balcony: 9'6" x 2'6"

Primary Suite 3 Balcony: 12'0" x 3'0"

Lower Level



Upper Level



The information contained herein, including without limitation, any and all artist's or conceptual renderings, plans, stated footages and other information reflected are based on preliminary construction plans, which are subject to change without notice and will vary with actual construction.

ASTER

3 Bedroom | 3.5 Bath
Floor Plan: B1 Penthouse

2212 SQ FT

Lower Level:

Living Room: 14'11" x 16'1"

Dining Room: 13'2" x 8'7"

Primary Suite 1: 12'6" x 13'6"

Lower Level Balcony: 41'0" x 5'6"

Upper Level:

Primary Suite 2: 12'9" x 13'7"

Primary Suite 3: 13'3" x 13'7"

Loft: 11'3" x 8'0"

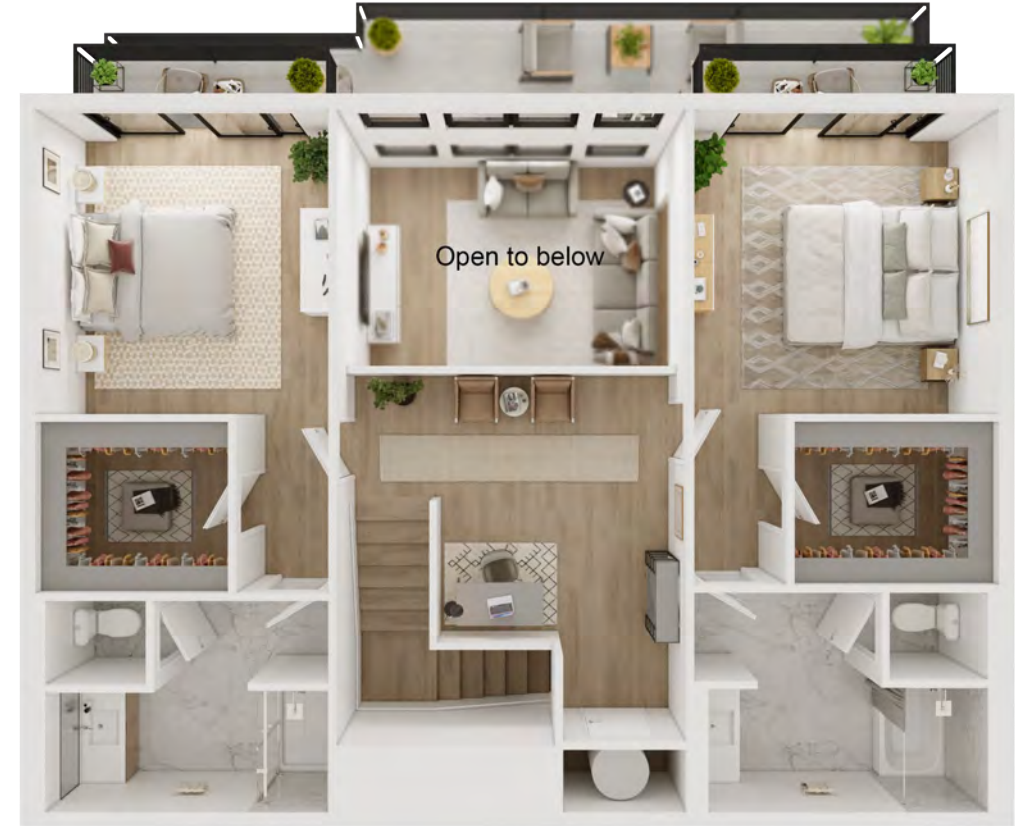
Primary Suite 2 Balcony: 11'6" x 3'0"

Primary Suite 3 Balcony: 11'6" x 3'0"

Lower Level



Upper Level



The information contained herein, including, without limitation, any and all artist's or conceptual renderings, plans, stated square footages and other information reflected are based on preliminary construction plans, which are subject to change without notice and will vary with actual construction.

ASTER

3 Bedroom | 3.5 Bath
Floor Plan: B8 Penthouse

Upper Level



Lower Level



2352 SQ FT

Lower Level:

Living Room: 15'0" x 16'6"

Dining Room: 12'9" x 11'4"

Primary Suite 1: 13'3" x 19'2"

Dining Room Balcony: 25'10" x 6'11"

Upper Level:

Primary Suite 2: 13'2" x 19'2"

Primary Suite 3: 12'5" x 12'7"

Loft: 13'2" x 11'9"

Primary Suite 3 Balcony: 11'5" x 3'0"



The information contained herein, including without limitation, any and all artist's or conceptual renderings, plans, stated footages and other information reflected are based on preliminary construction plans, which are subject to change without notice and will vary with actual construction.

ASTER

3 Bedroom | 3.5 Bath
Floor Plan: C3 Penthouse

Upper Level



Lower Level



2426 SQ FT

Lower Level:

Living Room: 15'0" x 17'5"

Dining Room: 12'9" x 13'3"

Primary Suite 1: 13'3" x 13'6"

Den: 13'3" x 11'9"

Dining Room Balcony: 5'4" x 5'6"

Upper Level:

Primary Suite 2: 12'6" x 13'6"

Primary Suite 3: 12'0" x 13'2"

Primary Suite 2 Balcony: 12'4" x 3'0"

Primary Suite 3 Balcony: 12'0" x 3'0"



The information contained herein, including without limitation, any and all artist's or conceptual renderings, plans, stated footages and other information reflected are based on preliminary construction plans, which are subject to change without notice and will vary with actual construction.

ASTER

3 Bedroom | 3.5 Bath
Floor Plan: B10 Penthouse

Upper Level



Lower Level



2608 SQ FT

Lower Level:

Living Room: 15'11" x 15'0"

Dining Room: 11'5" x 10'9"

Primary Suite 1: 13'3" x 13'5"

Dining Room Balcony: 32'5" x 5'6"

Upper Level:

Primary Suite 2: 18'5" x 23'4"

Primary Suite 3: 12'0" x 14'3"

Loft: 12'9" x 14'7"

Primary Suite 2 Balcony: 9'4" x 3'0"

Primary Suite 3 Balcony: 12'0" x 3'0"



The information contained herein, including without limitation, any and all artist's or conceptual renderings, plans, stated footages and other information reflected are based on preliminary construction plans, which are subject to change without notice and will vary with actual construction.

ASTER

3 Bedroom | 3.5 Bath
Floor Plan: B2 Penthouse

2620 SQ FT

Lower Level:

Living Room: 15'0" x 14'9"

Dining Room: 14'0" x 10'7"

Primary Suite 1: 13'3" x 14'3"

Dining Room Balcony: 28'3" x 5'6"

Upper Level:

Primary Suite 2: 18'0" x 23'5"

Primary Suite 3: 13'3" x 13'7"

Den/Loft: 12'9" x 14'6"

Primary Suite 2 Balcony: 9'2" x 3'0"

Primary Suite 3 Balcony: 9'2" x 3'0"



The information contained herein, including without limitation, any and all artist's or conceptual renderings, plans, stated footages and other information reflected are based on preliminary construction plans, which are subject to change without notice and will vary with actual construction.

ASTER

3 Bedroom | 3.5 Bath
Floor Plan: C2 Penthouse

Upper Level



Lower Level



2660 SQ FT

Lower Level:

Living Room: 18'1" x 23'4"

Dining Room: 14'4" x 11'8"

Primary Suite 1: 13'3" x 14'0"

Den: 14'4" x 9'11"

Lower Level Balcony: 42'6" x 5'6"

Upper Level:

Primary Suite 2: 13'3" x 14'0"

Primary Suite 3: 14'4" x 16'0"

Loft: 9'6" x 17'9"

Primary Suite 3 Balcony: 14'4" x 5'0"



The information contained herein, including without limitation, any and all artist's or conceptual renderings, plans, stated footages and other information reflected are based on preliminary construction plans, which are subject to change without notice and will vary with actual construction.

ASTER

3 Bedroom | 3.5 Bath
Floor Plan: C1 Penthouse

2820 SQ FT

Lower Level:

Living/Dining Room: 25'6" x 22'3"

Primary Suite 1: 14'9" x 14'0"

Den: 14'0" x 9'11"

Kitchen Balcony: 12'9" x 5'0"

Living Room Balcony: 14'0" x 7'0"

Upper Level:

Primary Suite 2: 14'3" x 14'0"

Primary Suite 3: 14'0" x 13'6"

Loft: 14'6" x 12'9"

Primary Suite 2 Balcony: 11'8" x 3'0"

Primary Suite 3 Balcony: 11'8" x 3'0"

Lower Level



Upper Level



The information contained herein, including, without limitation, any and all artist's or conceptual renderings, plans, stated square footages and other information reflected are based on preliminary construction plans, which are subject to change without notice and will vary with actual construction.

LNKS

2 Bedroom | 2.5 Bath
Floor Plan: A2 Penthouse

1855 SQ FT

Lower Level:

Living Room: 16'0" x 14'11"

Dining Room: 15'9" x 15'6"

Lower Level Balcony: 32'4" x 7'0"

Upper Level:

Primary Suite 1: 16'0" x 13'6"

Primary Suite 2: 16'4" x 13'6"

Loft: 7'7" x 10'11"

Primary Suite 2 Balcony: 12'0" x 3'0"

Primary Suite 3 Balcony: 12'0" x 3'0"

Lower Level



Upper Level



The information contained herein, including, without limitation, any and all artist's or conceptual renderings, plans, stated square footages and other information reflected are based on preliminary construction plans, which are subject to change without notice and will vary with actual construction.

LNKS

3 Bedroom | 3.5 Bath
Floor Plan: B3 Penthouse

2321 SQ FT

Lower Level:

Living Room: 16'0" x 17'4"

Dining Room: 12'9" x 12'9"

Primary Suite 1: 13'3" x 13'9"

Lower Level Balcony: 42'6" x 7'3"

Upper Level:

Primary Suite 2: 12'9" x 13'7"

Primary Suite 3: 13'3" x 13'7"

Loft: 16'0" x 12'3"

Primary Suite 2 Balcony: 12'9" x 3'0"

Primary Suite 3 Balcony: 13'3" x 3'0"

Lower Level



Upper Level



The information contained herein, including, without limitation, any and all artist's or conceptual renderings, plans, stated square footages and other information reflected are based on preliminary construction plans, which are subject to change without notice and will vary with actual construction.

LNKS

3 Bedroom | 3.5 Bath
Floor Plan: C4 Penthouse

Upper Level

Lower Level



2498 SQ FT

Lower Level:

Living Room: 15'0" x 17'4"

Dining Room: 13'3" x 14'6"

Primary Suite 1: 15'0" x 14'0"

Loft: 12'9" x 9'9"

Lower Level Balcony: 56'0" x 5'6"

Upper Level:

Primary Suite 2: 12'0" x 13'6"

Primary Suite 3: 12'6" x 13'2"

Primary Suite 2 Balcony: 12'0" x 3'0"

Primary Suite 3 Balcony: 12'0" x 3'0"



The information contained herein, including, without limitation, any and all artist's or conceptual renderings, plans, stated square footages and other information reflected are based on preliminary construction plans, which are subject to change without notice and will vary with actual construction.

LNKS

3 Bedroom | 3.5 Bath
Floor Plan: B1 Penthouse Alt 2

2213 SQ FT

Lower Level:

- Living Room: 14'9" x 16'1"
- Dining Room: 13'3" x 8'7"
- Primary Suite 1: 12'6" x 13'6"
- Lower Level Balcony: 41'0" x 7'0"

Upper Level:

- Primary Suite 2: 12'9" x 13'7"
- Primary Suite 3: 13'3" x 13'7"
- Loft: 11'3" x 8'0"
- Primary Suite 2 Balcony: 11'6" x 3'0"
- Primary Suite 3 Balcony: 11'6" x 3'0"

Lower Level



Upper Level



The information contained herein, including, without limitation, any and all artist's or conceptual renderings, plans, stated square footages and other information reflected are based on preliminary construction plans, which are subject to change without notice and will vary with actual construction.

LNKS

3 Bedroom | 3.5 Bath
Floor Plan: B2 Penthouse

2620 SQ FT

Lower Level:
Living Room: 15'0" x 14'9"
Dining Room: 14'0" x 10'7"
Primary Suite 1: 13'3" x 14'3"
Lower Level Balcony: 28'3" x 5'6"

Upper Level:
Primary Suite 2: 18'4" x 19'0"
Primary Suite 3: 13'3" x 13'6"
Den/Loft: 12'9" x 14'6"
Primary Suite 2 Balcony: 9'2" x 3'0"
Primary Suite 3 Balcony: 9'2" x 3'0"



The information contained herein, including, without limitation, any and all artist's or conceptual renderings, plans, stated square footages and other information reflected are based on preliminary construction plans, which are subject to change without notice and will vary with actual construction.

LNKS

3 Bedroom | 3.5 Bath
Floor Plan: B4 Penthouse

Lower Level



Upper Level



1965 SQ FT

Lower Level:

Living Room: 15'0" x 18'4"

Dining Room: 13'3" x 8'0"

Primary Suite 1: 12'6" x 13'6"

Lower Level Balcony: 41'0" x 5'6"

Upper Level:

Primary Suite 2: 12'9" x 13'7"

Primary Suite 3: 13'3" x 13'7"

Primary Suite 2 Balcony: 12'9" x 3'0"

Primary Suite 3 Balcony: 13'3" x 3'0"



The information contained herein, including, without limitation, any and all artist's or conceptual renderings, plans, stated square footages and other information reflected are based on preliminary construction plans, which are subject to change without notice and will vary with actual construction.

LNKS

3 Bedroom | 3.5 Bath
Floor Plan: B6 Penthouse Alt 1

2008 SQ FT

Lower Level:
Living Room: 16'0" x 18'0"
Dining Room: 13'3" x 7'10"
Primary Suite 1: 12'9" x 13'6"
Lower Level Balcony: 42'0" x 7'0"

Upper Level:
Primary Suite 2: 12'0" x 13'7"
Primary Suite 3: 12'7" x 13'0"
Primary Suite 2 Balcony: 12'0" x 3'0"
Primary Suite 3 Balcony: 12'0" x 3'0"

Lower Level



Upper Level



The information contained herein, including, without limitation, any and all artist's or conceptual renderings, plans, stated square footages and other information reflected are based on preliminary construction plans, which are subject to change without notice and will vary with actual construction.

LNKS

3 Bedroom | 3.5 Bath
Floor Plan: B10 Penthouse

2608 SQ FT

Lower Level:

- Living Room: 15'11" x 15'0"
- Dining Room: 11'5" x 10'9"
- Primary Suite 1: 13'3" x 13'5"
- Lower Level Balcony: 32'5" x 5'6"

Upper Level:

- Primary Suite 2: 18'5" x 23'4"
- Primary Suite 3: 12'0" x 14'3"
- Loft: 12'9" x 14'7"
- Primary Suite 2 Balcony: 9'4" x 3'0"
- Primary Suite 3 Balcony: 12'0" x 3'0"



The information contained herein, including, without limitation, any and all artist's or conceptual renderings, plans, stated square footages and other information reflected are based on preliminary construction plans, which are subject to change without notice and will vary with actual construction.

LNKS

3 Bedroom | 3.5 Bath
Floor Plan: C1 Penthouse Atl 1

2820 SQ FT

Lower Level:

- Living/Dining Room: 25'6" x 22'3"
- Primary Suite 1: 14'9" x 14'0"
- Den: 14'0" x 9'11"
- Living Room Balcony: 14'0" x 7'0"
- Kitchen Room Balcony: 12'9" x 5'0"

Upper Level:

- Primary Suite 2: 14'3" x 14'0"
- Primary Suite 3: 14'0" x 13'6"
- Loft: 14'6" x 12'9"
- Primary Suite 2 Balcony: 11'8" x 3'0"
- Primary Suite 3 Balcony: 11'8" x 3'0"

Lower Level



Upper Level



The information contained herein, including, without limitation, any and all artist's or conceptual renderings, plans, stated square footages and other information reflected are based on preliminary construction plans, which are subject to change without notice and will vary with actual construction.