

# 888 BRICKELL MIAMI

DOLCE & GABBANA

## RESIDENCE A

FLOORS 55 - 58

### ROOMS

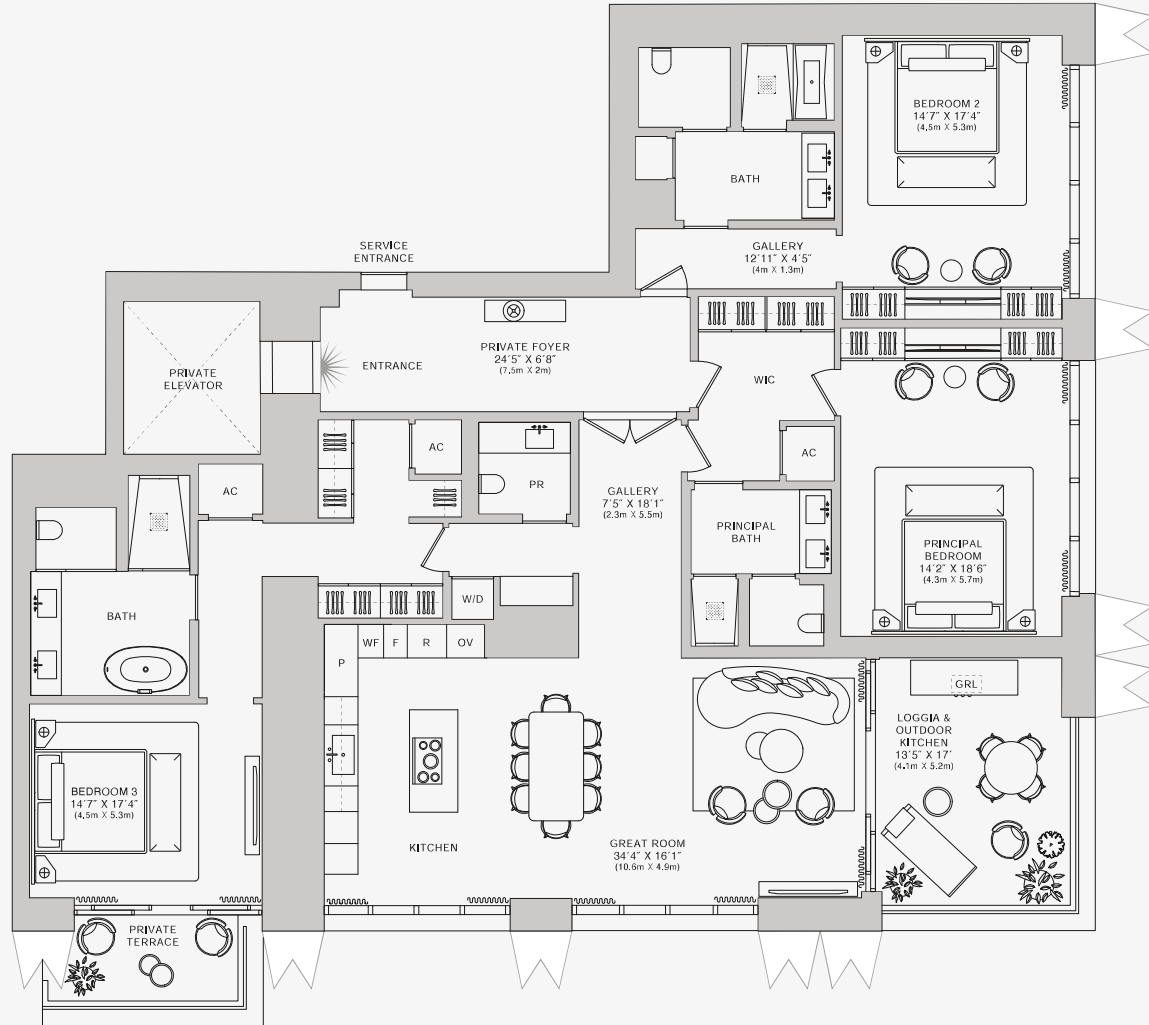
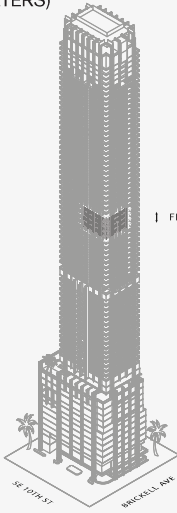
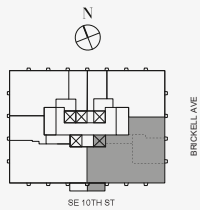
- 3 Bedrooms
- 3 Bathrooms
- Powder Room

### SQUARE FOOTAGES (SQUARE METERS)

- Indoor: 3,068 SQF (285 SM)
- Outdoor: 323 SQF (30 SM)
- Total: 3,391 SQF (315 SM)

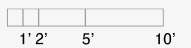
### FEATURES

- 888 Suite & 888 Room
- Ceiling Height up to 11'
- Loggia & Outdoor Kitchen
- South - East Views



Biscayne Bay

Stated dimensions are measured to the exterior boundaries of the exterior walls and the centerline of interior demising walls and in fact vary from the dimensions that would be determined by using the description and definition of the "Unit" set forth in the Declaration (which generally only includes the interior airspace between the perimeter walls and excludes interior structural components). For your reference, the area of the Unit, determined in accordance with those defined unit boundaries, is set forth on Exhibit "3" to the Declaration of Condominium. Note that measurements of rooms set forth on this floor plan are generally taken at the greatest points of each given room (as if the room were a perfect rectangle), without regard for any curves. Accordingly, the area of the actual room will typically be smaller than the product obtained by multiplying the stated length times width. All dimensions are approximate and may vary with actual construction, and all floor plans and development plans are subject to change. The Condominium is not owned, developed or sold by Dolce & Gabbana S.r.l. or any of its affiliates (the "Brand"). Developer uses Dolce & Gabbana marks pursuant to a license agreement with the Brand, terminable according to its terms. The Brand assumes no responsibility or liability in connection with the project, and makes no representation or warranty in respect thereof.



# 888 BRICKELL MIAMI

DOLCE & GABBANA

## RESIDENCE A

FLOORS 55 - 58

### ROOMS

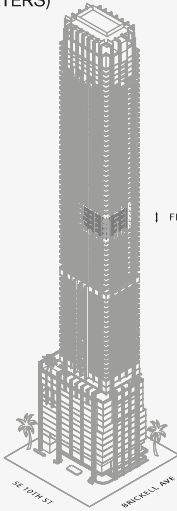
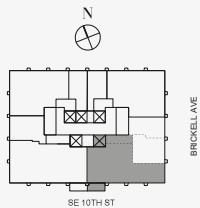
- 3 Bedrooms
- 3 Bathrooms
- Powder Room

### SQUARE FOOTAGES (SQUARE METERS)

- Indoor: 3,068 SQF (285 SM)
- Outdoor: 323 SQF (30 SM)
- Total: 3,391 SQF (315 SM)

### FEATURES

- 888 Suite & 888 Room
- Ceiling Height up to 11'
- Loggia & Outdoor Kitchen
- South - East Views



FLOORS 55-58



Biscayne Bay

Stated dimensions are measured to the exterior boundaries of the exterior walls and the center-line of interior demising walls and in fact vary from the dimensions that would be determined by using the description and definition of the "Unit" set forth in the Declaration (which generally only includes the interior airspace between the perimeter walls and excludes interior structural components). For your reference, the area of the Unit determined in accordance with those defined unit boundaries, is set forth on Exhibit "3" to the Declaration of Condominium. Note that measurements of rooms set forth on this floor plan are generally taken at the greatest points of each given room (as if the room were a perfect rectangle), without regard for any corners. Accordingly, the area of the actual room will typically be smaller than the product obtained by multiplying the stated length times width. All dimensions are approximate and may vary with actual construction, and all floor plans and development plans are subject to change. The Condominium is not owned, developed or sold by Dolce & Gabbana S.p.A. or any of its affiliates (the "Brand"). Developer uses Dolce & Gabbana marks pursuant to a license agreement with the Brand, terminable according to its terms. The Brand assumes no responsibility or liability in connection with the project, and makes no representation or warranty in respect thereof.



# 888 BRICKELL MIAMI

DOLCE & GABBANA

## RESIDENCE A

FLOORS 55 - 58

### ROOMS

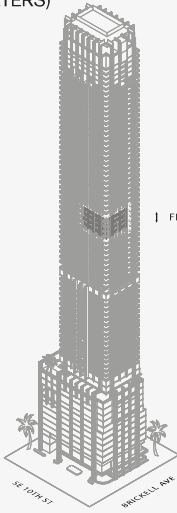
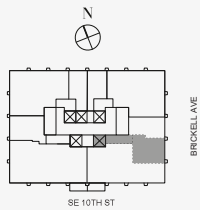
- 3 Bedrooms
- 3 Bathrooms
- Powder Room

### SQUARE FOOTAGES (SQUARE METERS)

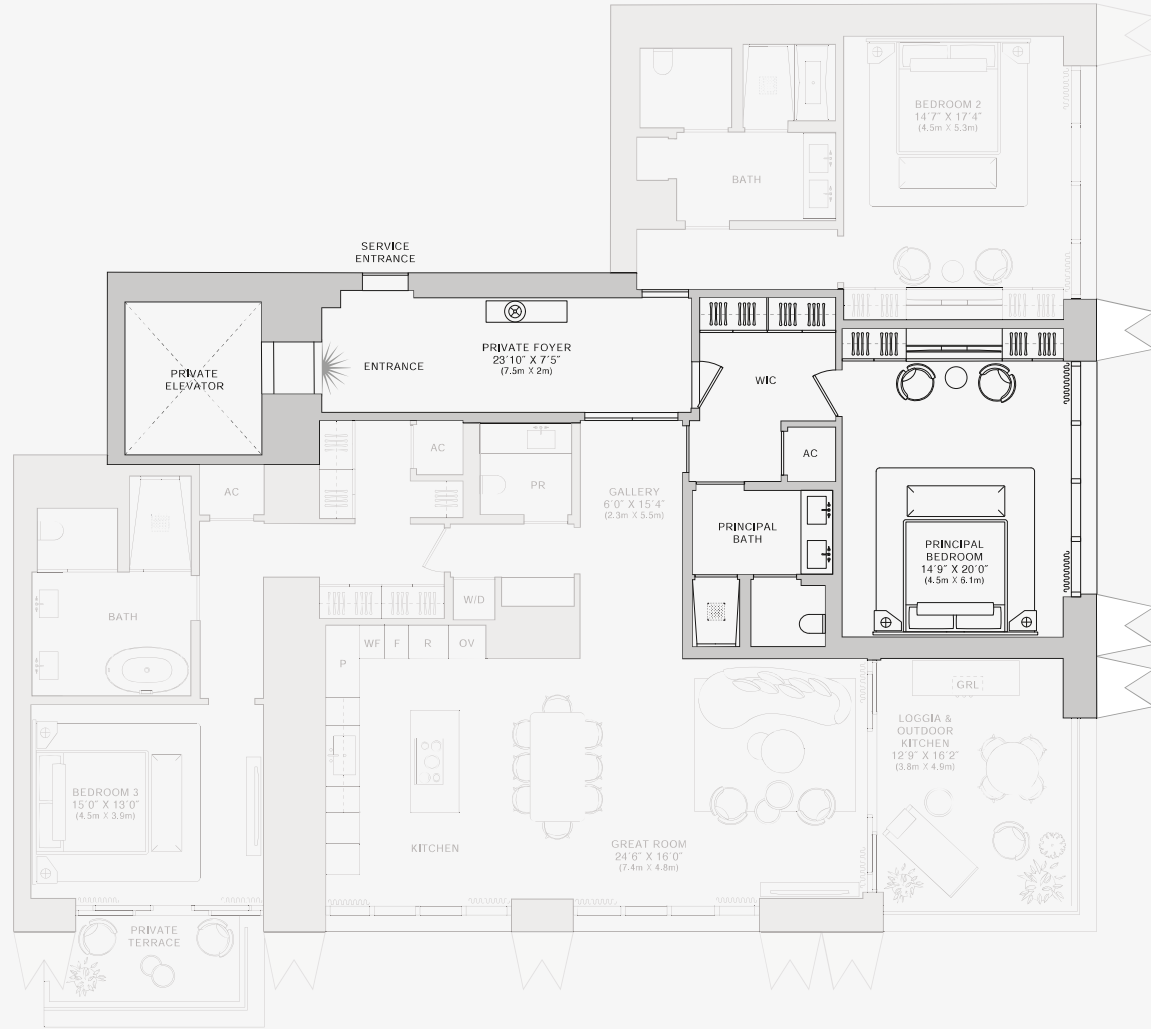
- Indoor: 3,068 SQF (285 SM)
- Outdoor: 323 SQF (30 SM)
- Total: 3,391 SQF (315 SM)

### FEATURES

- 888 Suite & 888 Room
- Ceiling Height up to 11'
- Loggia & Outdoor Kitchen
- South - East Views

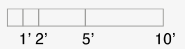


FLOORS 55-58



Biscayne Bay

Stated dimensions are measured to the exterior boundaries of the exterior walls and the center-line of interior demising walls and in fact vary from the dimensions that would be determined by using the description and definition of the "Unit" set forth in the Declaration (which generally only includes the interior airspace between the perimeter walls and excludes interior structural components). For your reference, the area of the Unit determined in accordance with those defined unit boundaries, is set forth on Exhibit "3" to the Declaration of Condominium. Note that measurements of rooms set forth on this floor plan are generally taken at the greatest points of each given room (as if the room were a perfect rectangle), without regard for any curves. Accordingly, the area of the actual room will typically be smaller than the product obtained by multiplying the stated length times width. All dimensions are approximate and may vary with actual construction, and all floor plans and development plans are subject to change. The Condominium is not owned, developed or sold by Dolce & Gabbana S.p.A. or any of its affiliates (the "Brand"). Developer uses Dolce & Gabbana marks pursuant to a license agreement with the Brand, terminating according to its terms. The Brand assumes no responsibility or liability in connection with the project, and makes no representation or warranty in respect thereof.



# 888 BRICKELL MIAMI

DOLCE & GABBANA

## RESIDENCE A

FLOORS 55 - 58

### ROOMS

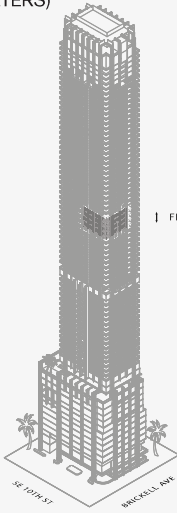
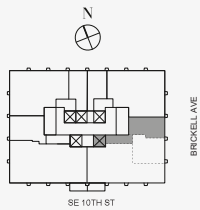
- 3 Bedrooms
- 3 Bathrooms
- Powder Room

### SQUARE FOOTAGES (SQUARE METERS)

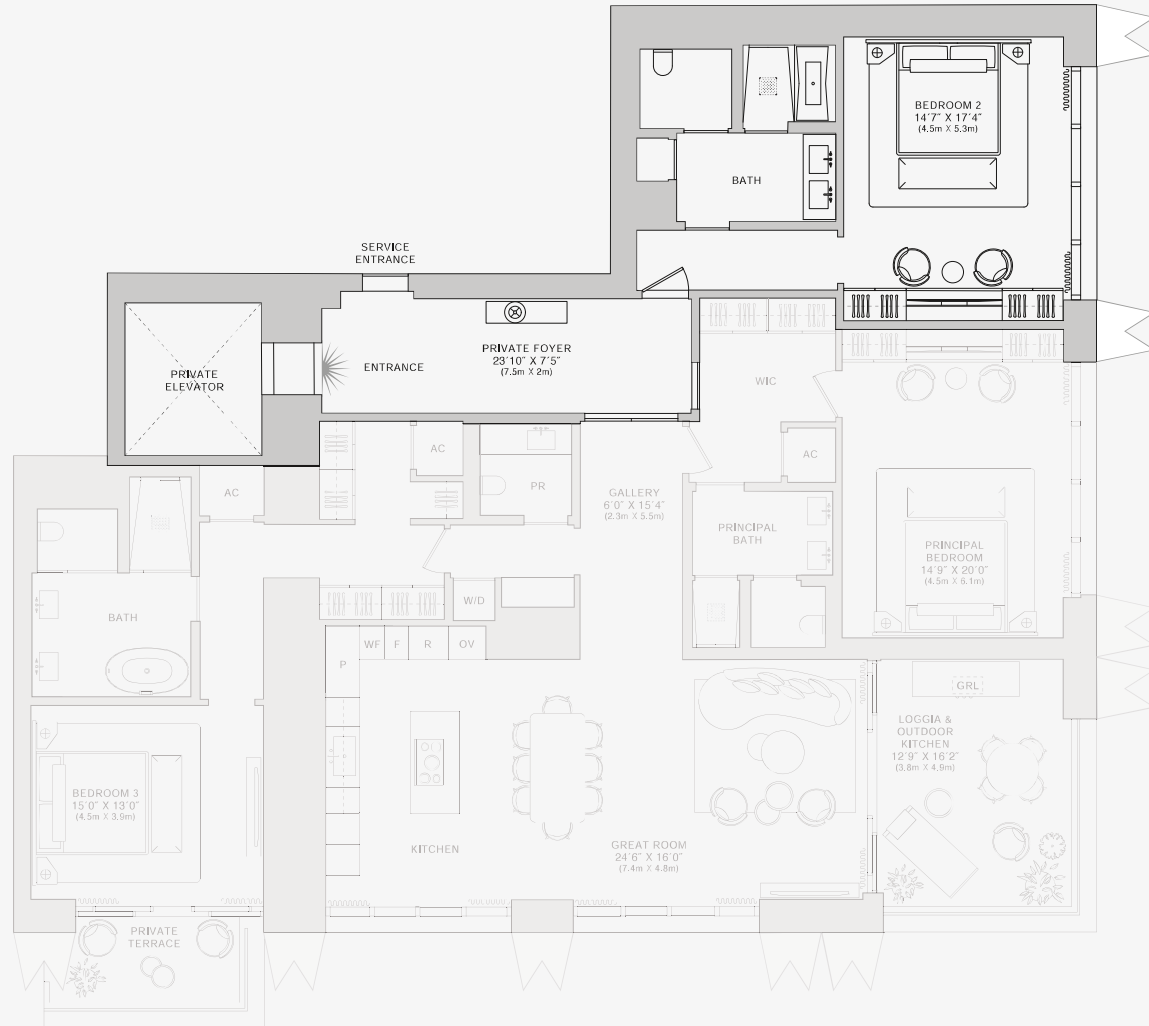
- Indoor: 3,068 SQF (285 SM)
- Outdoor: 323 SQF (30 SM)
- Total: 3,391 SQF (315 SM)

### FEATURES

- 888 Suite & 888 Room
- Ceiling Height up to 11'
- Loggia & Outdoor Kitchen
- South - East Views



FLOORS 55-58



Biscayne Bay

Stated dimensions are measured to the exterior boundaries of the exterior walls and the center-line of interior demising walls and in fact vary from the dimensions that would be determined by using the description and definition of the "Unit" set forth in the Declaration (which generally only includes the interior airspace between the perimeter walls and excludes interior structural components). For your reference, the area of the Unit determined in accordance with those defined unit boundaries, is set forth on Exhibit "3" to the Declaration of Condominium. Note that measurements of rooms set forth on this floor plan are generally taken at the greatest points of each given room (as if the room were a perfect rectangle), without regard for any corners. Accordingly, the area of the actual room will typically be smaller than the product obtained by multiplying the stated length times width. All dimensions are approximate and may vary with actual construction, and all floor plans and development plans are subject to change. The Condominium is not owned, developed or sold by Dolce & Gabbana S.p.A. or any of its affiliates (the "Brand"). Developer uses Dolce & Gabbana marks pursuant to a license agreement with the Brand, terminating according to its terms. The Brand assumes no responsibility or liability in connection with the project, and makes no representation or warranty in respect thereof.

# 888 BRICKELL MIAMI

DOLCE & GABBANA

## RESIDENCE D

FLOORS 55 - 77

### ROOMS

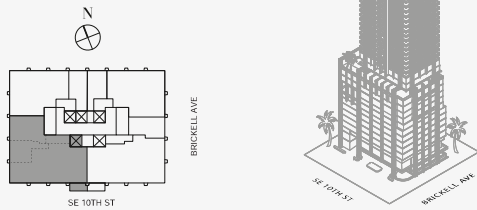
- 3 Bedrooms
- 3 Bathrooms
- Powder Room

### SQUARE FOOTAGES (SQUARE METERS)

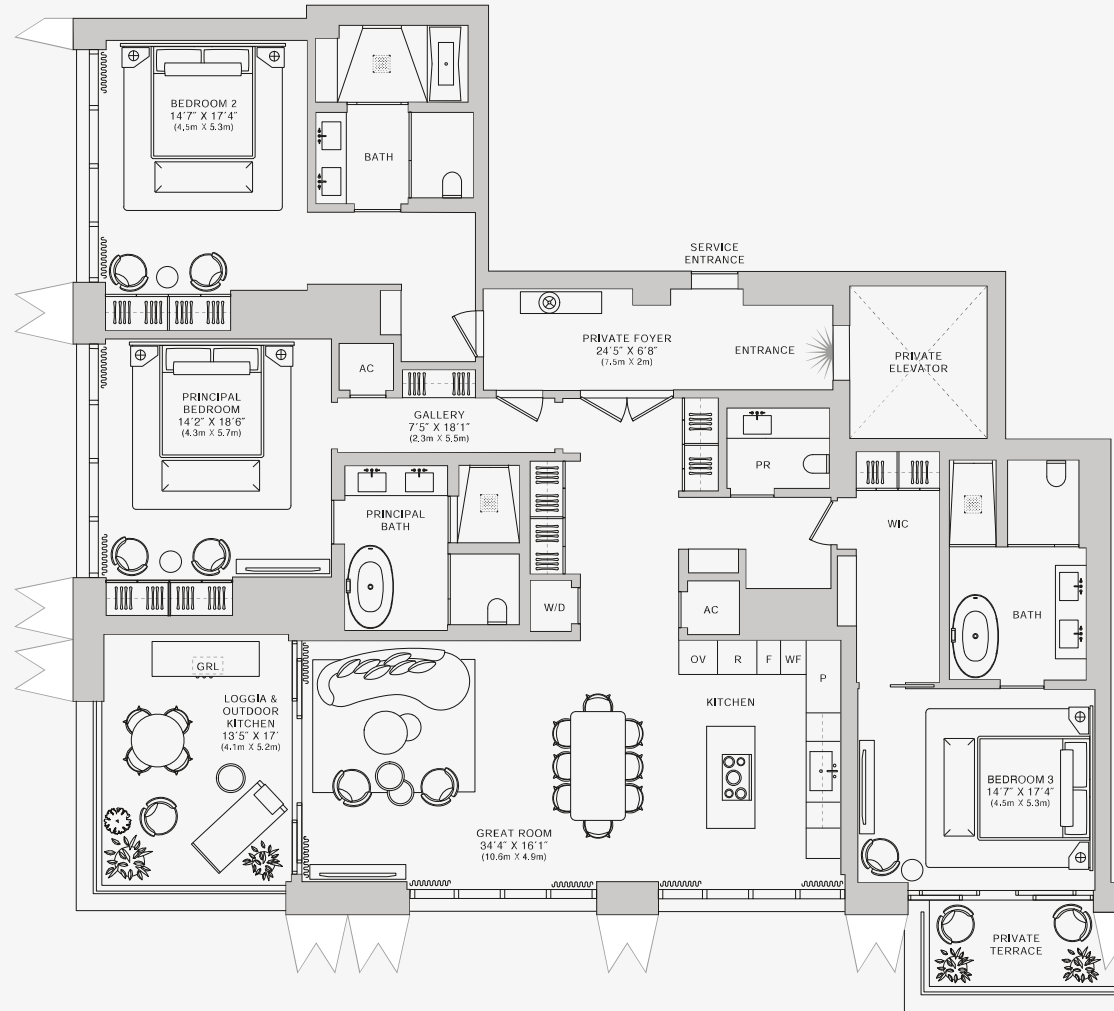
- Indoor: 2,800 SQF (260 SM)
- Outdoor: 325 SQF (30 SM)
- Total: 3,125 SQF (290 SM)

### FEATURES

- 888 Suite & 888 Room
- Ceiling Height up to 11'
- Loggia & Outdoor Kitchen
- South - West Views



FLOORS 55-77



Biscayne Bay

Residence 60D is an ADA compliant residence. Stated dimensions are measured to the exterior boundaries of the exterior walls and the centerline of interior demising walls and in fact vary from the dimensions that would be determined by using the description and definition of the "Unit" set forth in the Declaration (which generally only includes the interior air-space between the perimeter walls and encloses interior structural components). For your reference, the area of the Unit, determined in accordance with those defined unit boundaries, is set forth on Exhibit "3" to the Declaration of Condominium. Note that measurements of rooms set forth on this floor plan are generally taken at the greatest points of each given room (as if the room were a perfect rectangle), without regard for any outputs. Accordingly, the area of the actual room will typically be smaller than the product obtained by multiplying the stated length times width. All dimensions are approximate and may vary with actual construction, and all floor plans and development plans are subject to change. The Condominium is not owned, developed or sold by Dolce & Gabbana S.p.A. or any of its affiliates (the "Brand"). Developer uses Dolce & Gabbana marks pursuant to a license agreement with the Brand, terminable according to its terms. The Brand assumes no responsibility or liability in connection with the project, and makes no representation or warranty in respect thereof.

# 888 BRICKELL MIAMI

DOLCE & GABBANA

## RESIDENCE D

FLOORS 55 - 77

### ROOMS

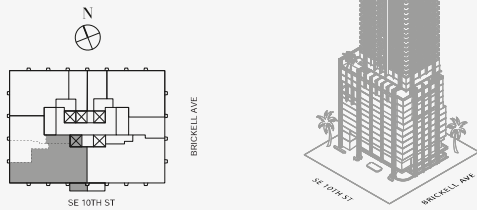
- 3 Bedrooms
- 3 Bathrooms
- Powder Room

### SQUARE FOOTAGES (SQUARE METERS)

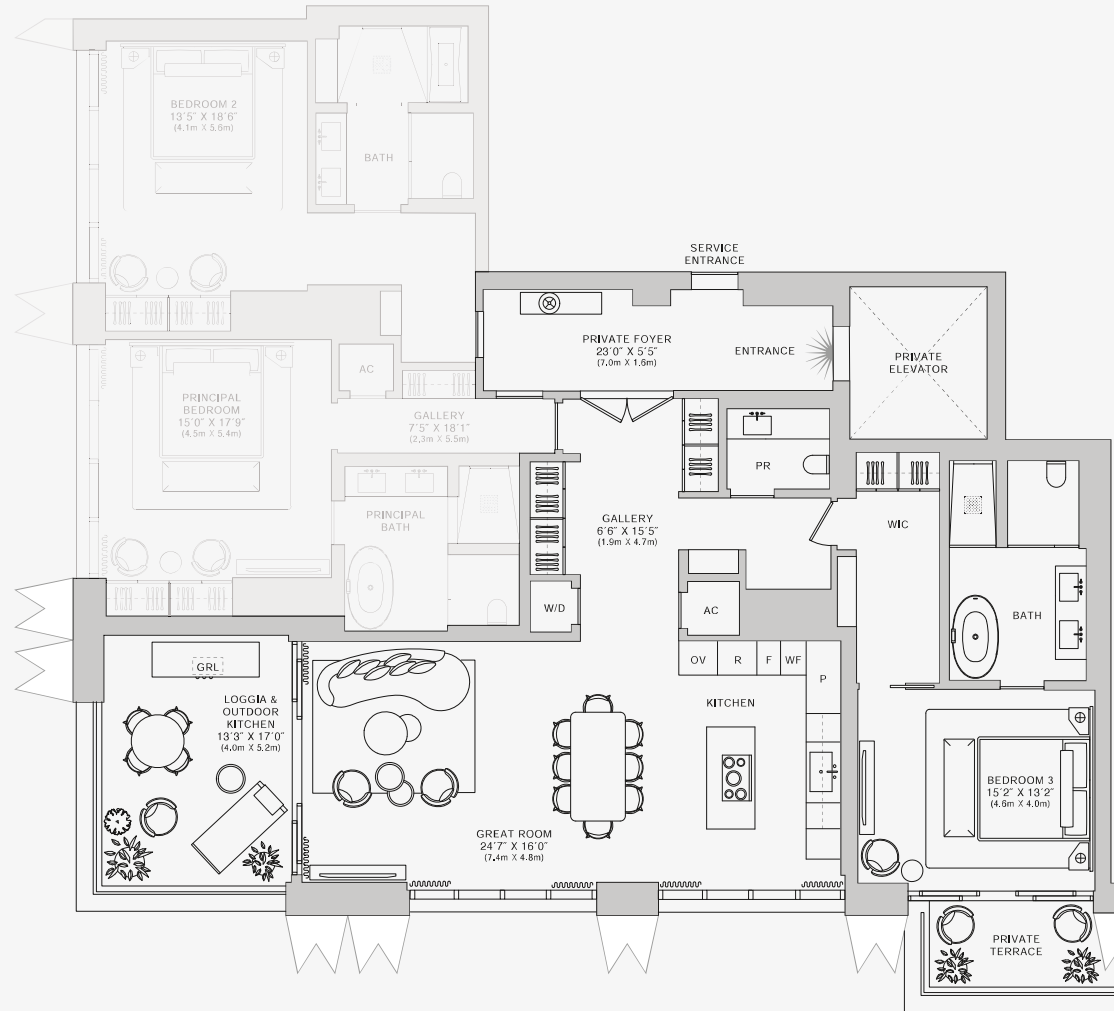
- Indoor: 2,800 SQF (260 SM)
- Outdoor: 325 SQF (30 SM)
- Total: 3,125 SQF (290 SM)

### FEATURES

- 888 Suite & 888 Room
- Ceiling Height up to 11'
- Loggia & Outdoor Kitchen
- South - West Views



FLOORS 55-77



Biscayne Bay

Residence 60D is an ADA compliant residence. Stated dimensions are measured to the exterior boundaries of the exterior walls and the center line of interior demising walls and in fact vary from the dimensions that would be determined by using the description and definition of the "Unit" set forth in the Declaration (which generally only includes the interior airspace between the perimeter walls and excludes interior structural components). For your reference, the area of the Unit, determined in accordance with those defined unit boundaries, is set forth on Exhibit "3" to the Declaration of Condominium. Note that measurements of rooms set forth on this floor plan are generally taken at the greatest points of each given room (as if the room were a perfect rectangle), without regard for any cutouts. Accordingly, the area of the actual room will typically be smaller than the product obtained by multiplying the stated length times width. All dimensions are approximate and may vary with actual construction, and all floor plans and development plans are subject to change. The Condominium is not owned, developed or sold by Dolce & Gabbana S.r.l. or any of its affiliates (the "Brand"). Developer uses Dolce & Gabbana marks pursuant to a license agreement with the Brand, terminable according to its terms. The Brand assumes no responsibility or liability in connection with the project, and makes no representation or warranty in respect thereof.

# 888 BRICKELL MIAMI

DOLCE & GABBANA

## RESIDENCE D

FLOORS 55 - 77

### ROOMS

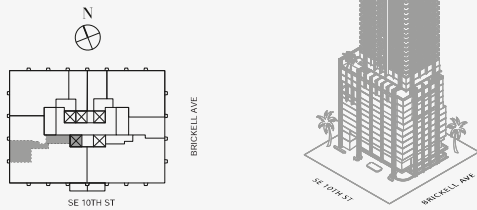
- 3 Bedrooms
- 3 Bathrooms
- Powder Room

### SQUARE FOOTAGES (SQUARE METERS)

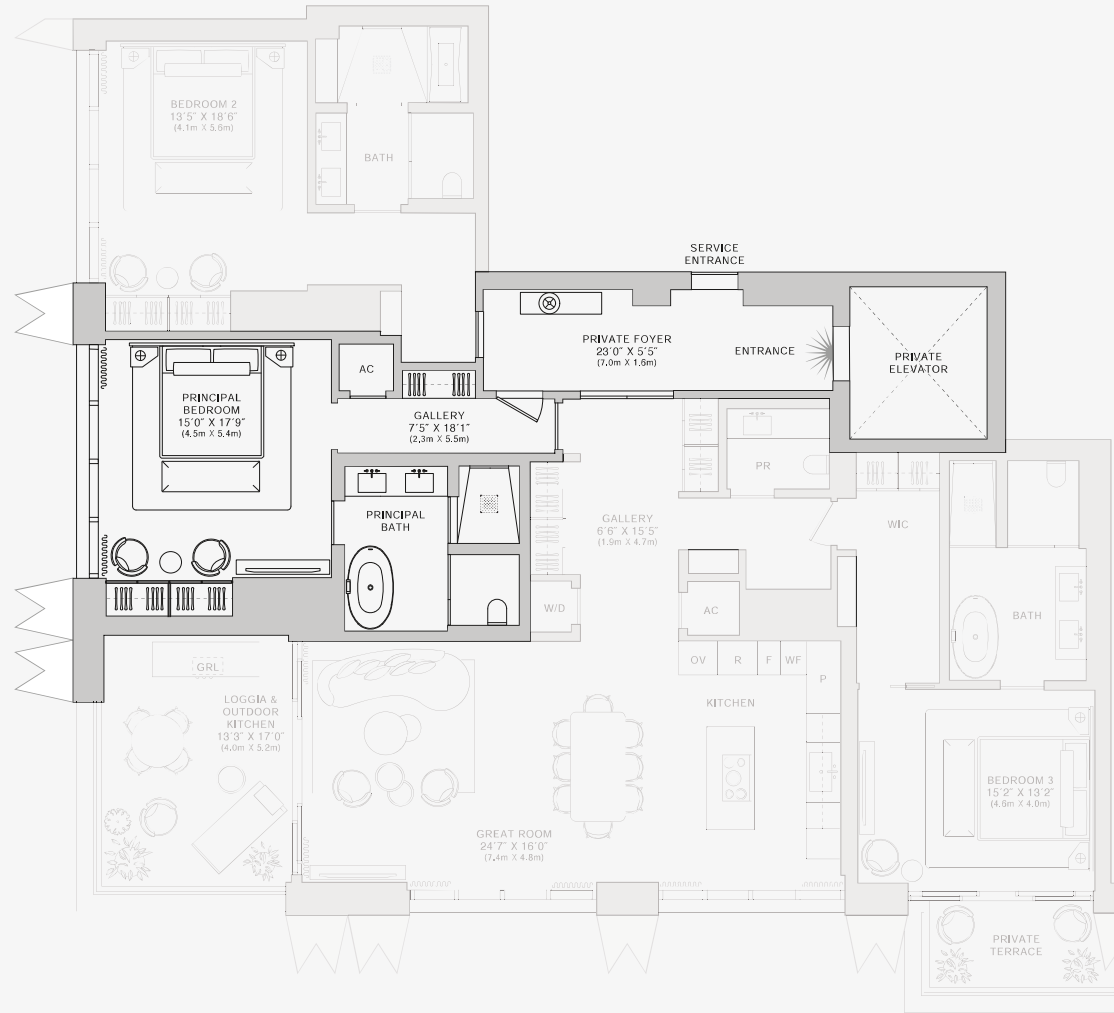
- Indoor: 2,800 SQF (260 SM)
- Outdoor: 325 SQF (30 SM)
- Total: 3,125 SQF (290 SM)

### FEATURES

- 888 Suite & 888 Room
- Ceiling Height up to 11'
- Loggia & Outdoor Kitchen
- South - West Views



FLOORS 55-77



Biscayne Bay

Residence 60D is an ADA compliant residence. Stated dimensions are measured to the exterior boundaries of the exterior walls and the center line of interior demising walls and in fact vary from the dimensions that would be determined by using the description and definition of the "Unit" set forth in the Declaration (which generally only indicates the interior airspace between the perimeter walls and excludes interior structural components). For your reference, the area of the Unit, determined in accordance with those defined unit boundaries, is set forth on Exhibit "3" to the Declaration of Condominium. Note that measurements of rooms set forth on this floor plan are generally taken at the greatest points of each given room (as if the room were a perfect rectangle), without regard for any closets. Accordingly, the area of the actual room will typically be smaller than the product obtained by multiplying the stated length times width. All dimensions are approximate and may vary with actual construction, and all floor plans and development plans are subject to change. The Condominium is not owned, developed or sold by Dolce & Gabbana S.p.A or any of its affiliates (the "Brand"). Developer uses Dolce & Gabbana marks pursuant to a license agreement with the Brand, terminable according to its terms. The Brand assumes no responsibility or liability in connection with the project, and makes no representation or warranty in respect thereof.

# 888 BRICKELL MIAMI

DOLCE & GABBANA

## RESIDENCE D

FLOORS 55 - 77

### ROOMS

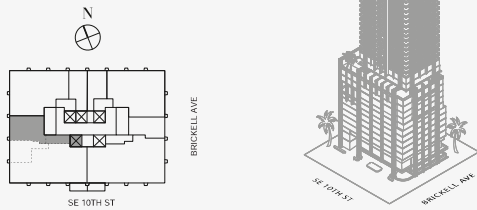
- 3 Bedrooms
- 3 Bathrooms
- Powder Room

### SQUARE FOOTAGES (SQUARE METERS)

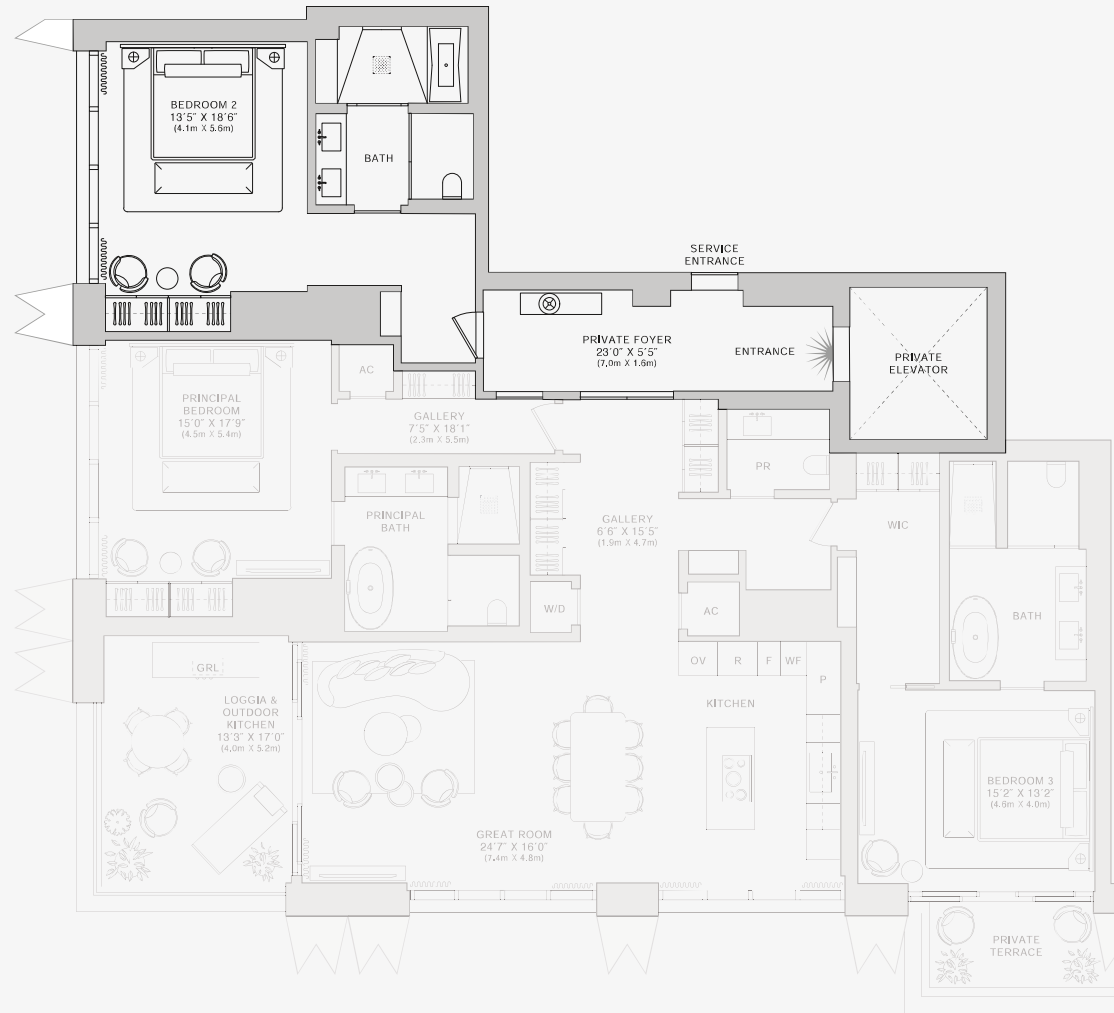
- Indoor: 2,800 SQF (260 SM)
- Outdoor: 325 SQF (30 SM)
- Total: 3,125 SQF (290 SM)

### FEATURES

- 888 Suite & 888 Room
- Ceiling Height up to 11'
- Loggia & Outdoor Kitchen
- South - West Views



FLOORS 55-77



Biscayne Bay

Residence 60D is an ADA compliant residence. Stated dimensions are measured to the exterior boundaries of the exterior walls and the centerline of interior demising walls and in fact vary from the dimensions that would be determined by using the description and definition of the "Unit" set forth in the Declaration (which generally only includes the interior airspace between the perimeter walls and excludes interior structural components). For your reference, the area of the Unit, determined in accordance with those defined unit boundaries, is set forth on Exhibit "3" to the Declaration of Condominium. Note that measurements of rooms set forth on this floor plan are generally taken at the greatest points of each given room (as if the room were a perfect rectangle), without regard for any cutouts. Accordingly, the area of the actual room will typically be smaller than the product obtained by multiplying the stated length times width. All dimensions are approximate and may vary with actual construction, and all floor plans and development plans are subject to change. The Condominium is not owned, developed or sold by Dolce & Gabbana S.p.A. or any of its affiliates (the "Brand"). Developer uses Dolce & Gabbana marks pursuant to a license agreement with the Brand, terminable according to its terms. The Brand assumes no responsibility or liability in connection with the project, and makes no representation or warranty in respect thereof.