

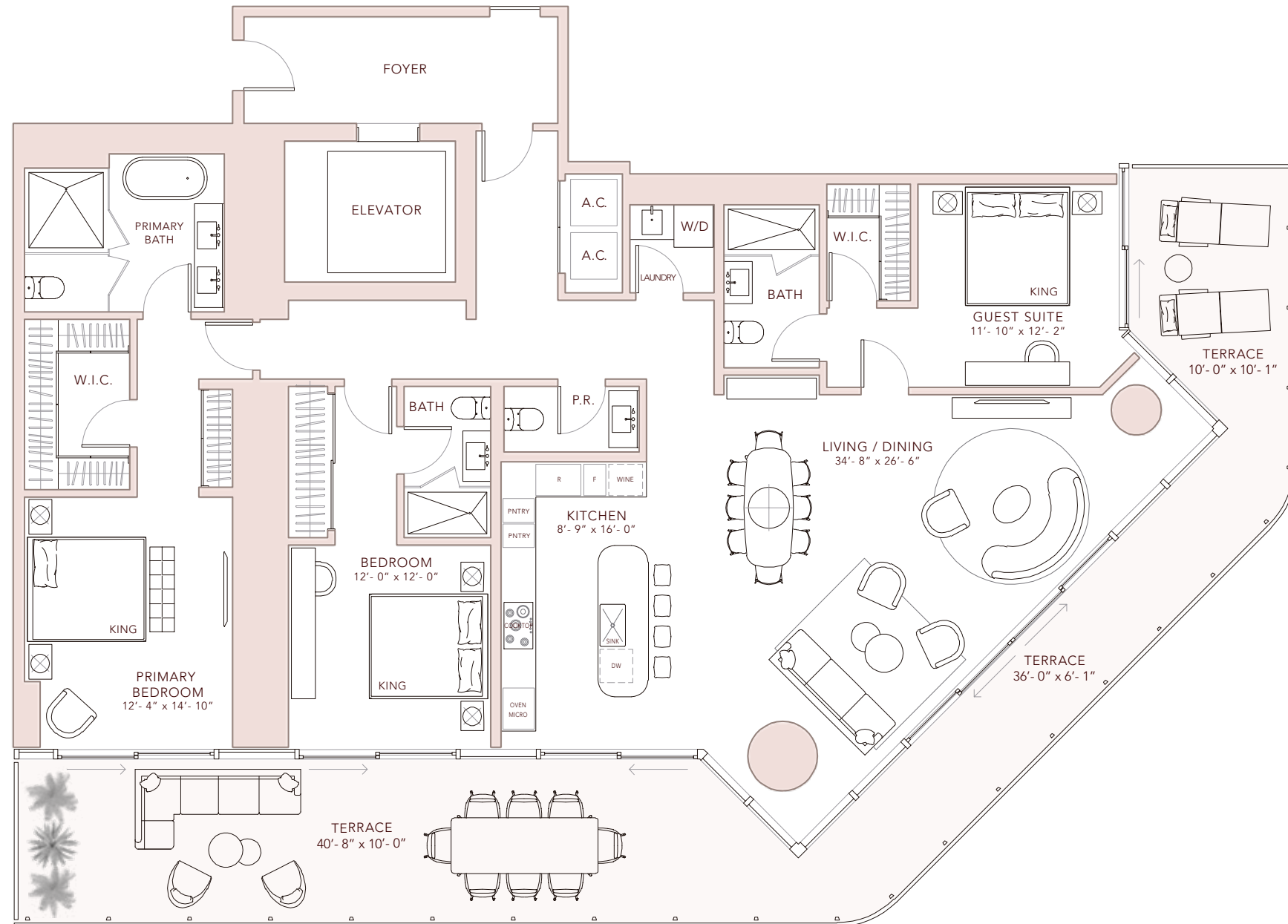
COLLECTION II  
EAST  
**Residence 02**

LEVELS 24 - 35

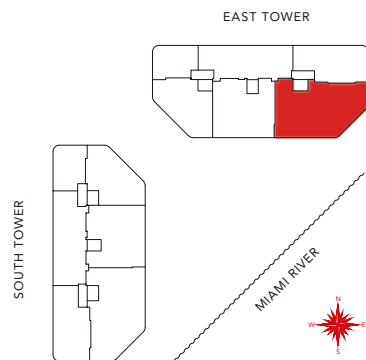
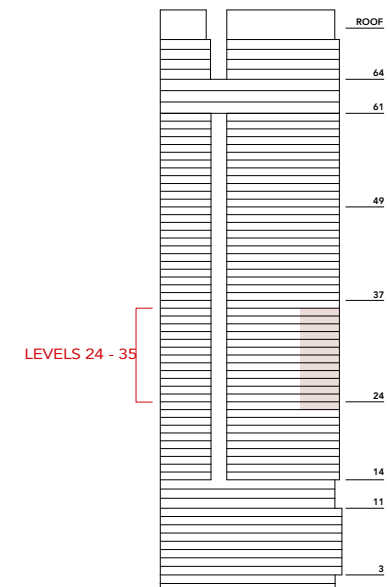
3 BEDROOMS  
3 BATHROOMS  
POWDER ROOM

INDOOR: 2,225 ft<sup>2</sup> 207 m<sup>2</sup>  
OUTDOOR: 822 ft<sup>2</sup> 76 m<sup>2</sup>  
TOTAL LIVING: 3,047 ft<sup>2</sup> 283 m<sup>2</sup>

**FAENA  
RESIDENCES**  
MIAMI



SOUTH TOWER EAST TOWER



ORAL REPRESENTATIONS CANNOT BE RELIED UPON AS CORRECTLY STATING THE REPRESENTATIONS OF THE DEVELOPER. FOR CORRECT REPRESENTATIONS, MAKE REFERENCE TO THIS BROCHURE AND TO THE DOCUMENTS REQUIRED BY SECTION 718.503, FLORIDA STATUTES, TO BE FURNISHED BY A DEVELOPER TO A BUYER OR LESSEE. This Condominium is being developed by FRM Associates LLC, a Florida limited liability company (the "Developer"). Neither Fortune International Group, KAR Properties nor Faena are the Developer. This is not intended to be an offer to sell, or solicitation to buy, condominium units to residents of any jurisdiction where prohibited by law, and your eligibility for purchase will depend upon your state of residency. This offering is made only by the prospectus for the condominium and no statement should be relied upon if not made in the prospectus. These materials should not be relied upon as representations, express or implied, of the final detail of the residences or the Condominium. All stated dimensions and ceiling heights are approximate and all floor plans and development plans are subject to change. Stated interior square footage is measured to the exterior face of exterior walls and to the centerline of interior demising walls or to the exterior face of walls adjoining corridors or other common elements or shared facilities without excluding areas that may be occupied by columns or other structural components. This method of measurement varies from, and is larger than, the dimensions that would be determined by using the description and the definition of the Unit set forth in the Declaration (which generally only includes the interior airspace between the perimeter walls and excludes structural components). For reference, the area of the unit, determined in accordance with the unit boundaries set forth in the Declaration is set forth in Exhibit "3" to the Declaration.

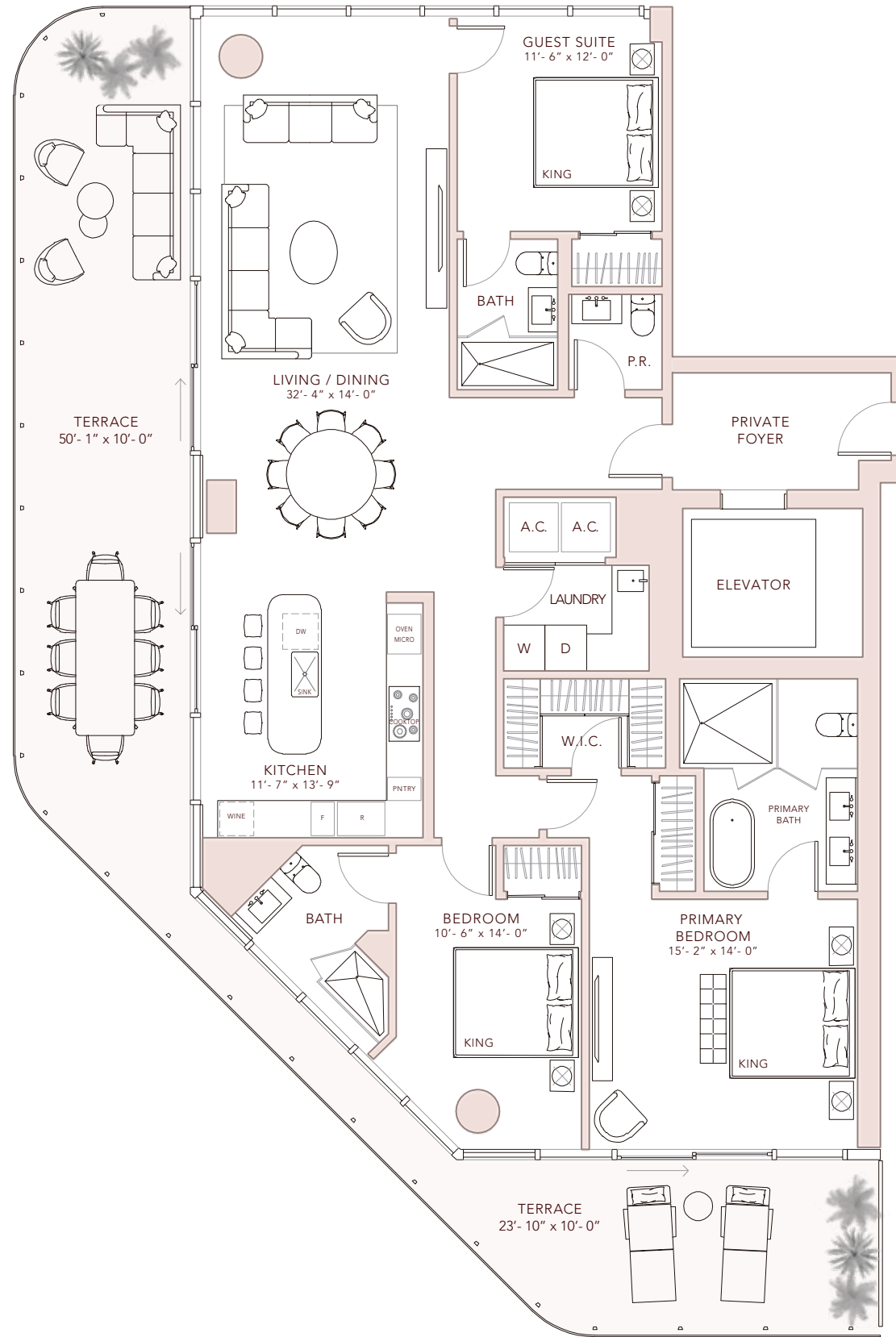
DEVELOPED BY  
**FORTUNE  
INTERNATIONAL  
GROUP** **KAR  
PROPERTIES**

COLLECTION IV  
EAST  
**Residence 05**

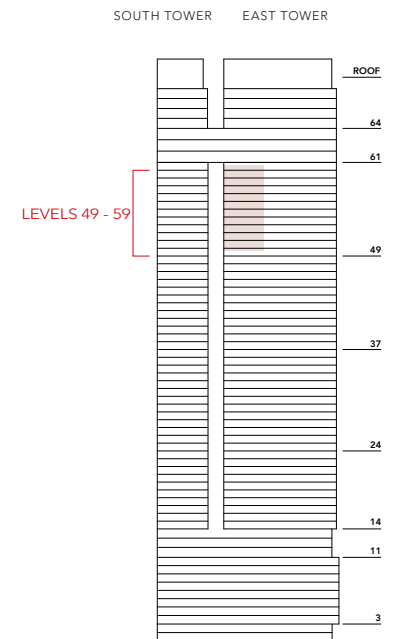
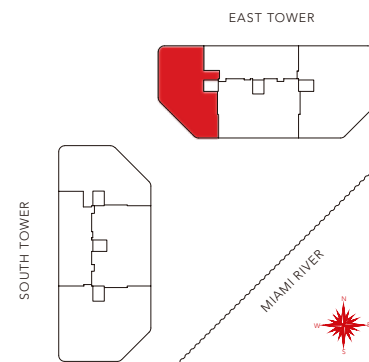
LEVELS 49 - 59

3 BEDROOMS  
3 BATHROOMS  
POWDER ROOM

INDOOR: 2,063 ft<sup>2</sup> 192 m<sup>2</sup>  
OUTDOOR: 770 ft<sup>2</sup> 72 m<sup>2</sup>  
TOTAL LIVING: 2,833 ft<sup>2</sup> 263 m<sup>2</sup>



**FAENA  
RESIDENCES**  
MIAMI



ORAL REPRESENTATIONS CANNOT BE RELIED UPON AS CORRECTLY STATING THE REPRESENTATIONS OF THE DEVELOPER. FOR CORRECT REPRESENTATIONS, MAKE REFERENCE TO THIS BROCHURE AND TO THE DOCUMENTS REQUIRED BY SECTION 718.503, FLORIDA STATUTES, TO BE FURNISHED BY A DEVELOPER TO A BUYER OR LESSEE. This Condominium is being developed by FRM Associates LLC, a Florida limited liability company (the "Developer"). Neither Fortune International Group, KAR Properties nor Faena are the Developer. This is not intended to be an offer to sell, or solicitation to buy, condominium units to residents of any jurisdiction where prohibited by law, and your eligibility for purchase will depend upon your state of residency. This offering is made only by the prospectus for the condominium and no statement should be relied upon if not made in the prospectus. These materials should not be relied upon as representations, express or implied, of the final detail of the residences or the Condominium. All stated dimensions and ceiling heights are approximate and all floor plans and development plans are subject to change. Stated interior square footage is measured to the exterior face of exterior walls and to the centerline of interior demising walls or to the exterior face of walls adjoining corridors or other common elements or shared facilities without excluding areas that may be occupied by columns or other structural components. This method of measurement varies from, and is larger than, the dimensions that would be determined by using the description and the definition of the Unit set forth in the Declaration (which generally only includes the interior airspace between the perimeter walls and excludes structural components). For reference, the area of the unit, determined in accordance with the unit boundaries set forth in the Declaration is set forth in Exhibit "3" to the Declaration.

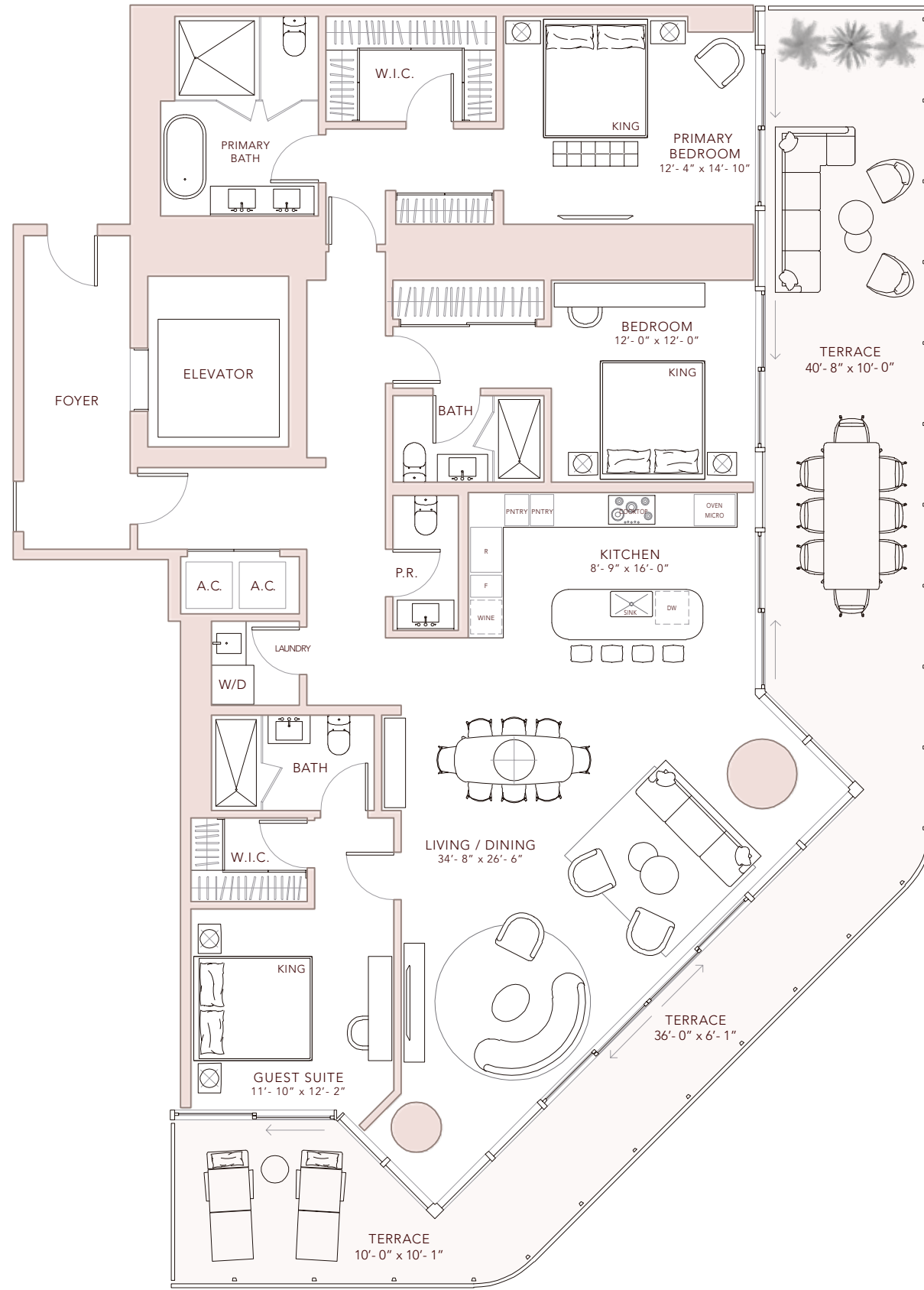
DEVELOPED BY  
**FORTUNE INTERNATIONAL GROUP**  
**KAR PROPERTIES**

COLLECTION II  
SOUTH  
**Residence 02**

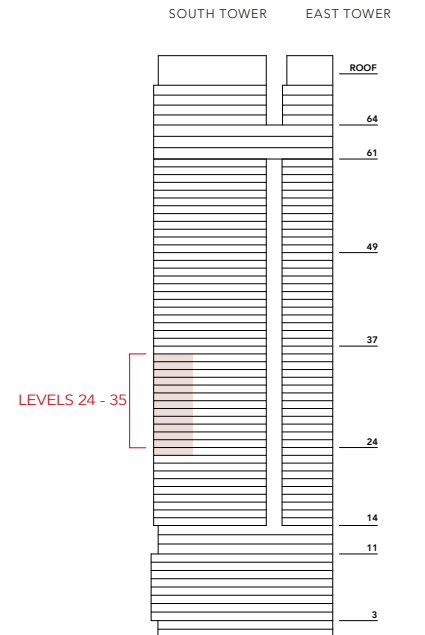
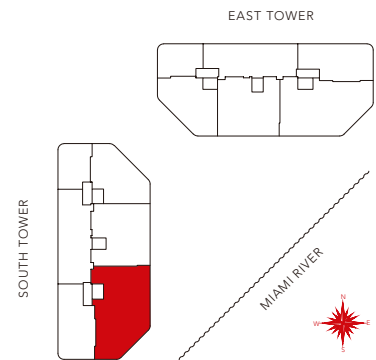
LEVELS 24 - 35

3 BEDROOMS  
3 BATHROOMS  
POWDER ROOM

INDOOR: 2,225 ft<sup>2</sup> 207 m<sup>2</sup>  
OUTDOOR: 822 ft<sup>2</sup> 76 m<sup>2</sup>  
TOTAL LIVING: 3,047 ft<sup>2</sup> 283 m<sup>2</sup>



**FAENA  
RESIDENCES**  
MIAMI



ORAL REPRESENTATIONS CANNOT BE RELIED UPON AS CORRECTLY STATING THE REPRESENTATIONS OF THE DEVELOPER. FOR CORRECT REPRESENTATIONS, MAKE REFERENCE TO THIS BROCHURE AND TO THE DOCUMENTS REQUIRED BY SECTION 718.503, FLORIDA STATUTES, TO BE FURNISHED BY A DEVELOPER TO A BUYER OR LESSEE. This Condominium is being developed by FRM Associates LLC, a Florida limited liability company (the "Developer"). Neither Fortune International Group, KAR Properties nor Faena are the Developer. This is not intended to be an offer to sell, or solicitation to buy, condominium units to residents of any jurisdiction where prohibited by law, and your eligibility for purchase will depend upon your state of residency. This offering is made only by the prospectus for the condominium and no statement should be relied upon if not made in the prospectus. These materials should not be relied upon as representations, express or implied, of the final detail of the residences or the Condominium. All stated dimensions and ceiling heights are approximate and all floor plans and development plans are subject to change. Stated interior square footage is measured to the exterior face of exterior walls and to the centerline of interior demising walls or to the exterior face of walls adjoining corridors or other common elements or shared facilities without excluding areas that may be occupied by columns or other structural components. This method of measurement varies from, and is larger than, the dimensions that would be determined by using the description and the definition of the Unit set forth in the Declaration (which generally only includes the interior airspace between the perimeter walls and excludes structural components). For reference, the area of the unit, determined in accordance with the unit boundaries set forth in the Declaration is set forth in Exhibit "3" to the Declaration.

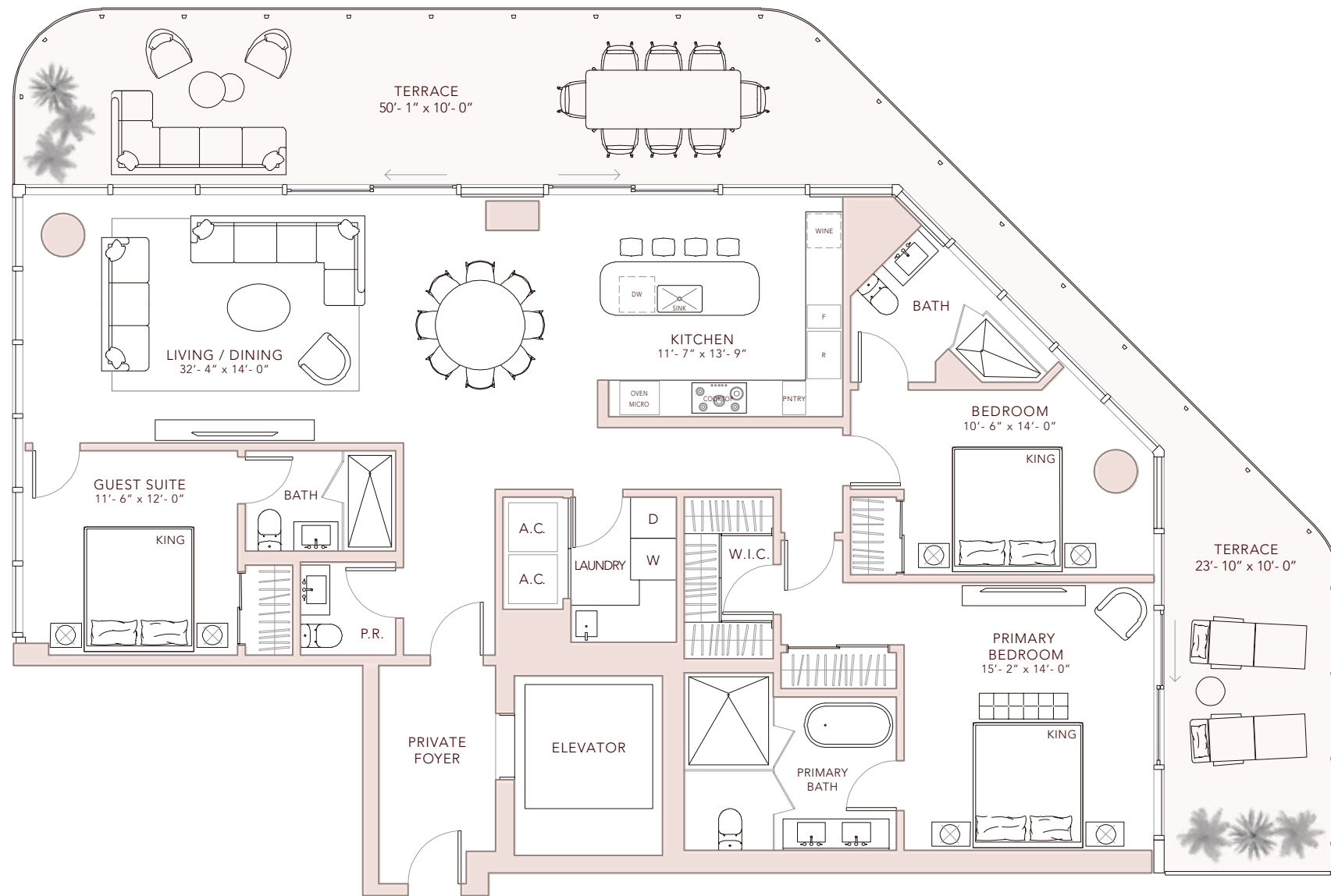
DEVELOPED BY  
**FORTUNE INTERNATIONAL GROUP**  
**KAR PROPERTIES**

COLLECTION IV  
SOUTH  
**Residence 05**

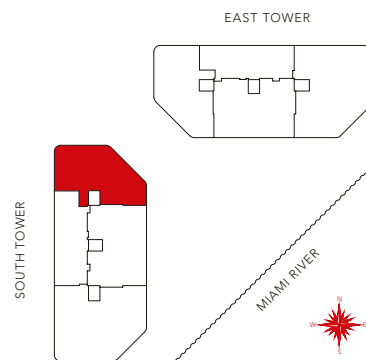
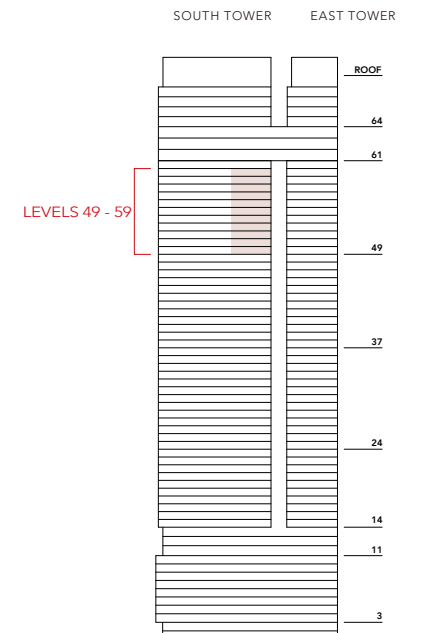
LEVELS 49 - 59

3 BEDROOMS  
3 BATHROOMS  
POWDER ROOM

INDOOR: 2,063 ft<sup>2</sup> 192 m<sup>2</sup>  
OUTDOOR: 770 ft<sup>2</sup> 72 m<sup>2</sup>  
TOTAL LIVING: 2,833 ft<sup>2</sup> 263 m<sup>2</sup>



**FAENA  
RESIDENCES**  
MIAMI



ORAL REPRESENTATIONS CANNOT BE RELIED UPON AS CORRECTLY STATING THE REPRESENTATIONS OF THE DEVELOPER. FOR CORRECT REPRESENTATIONS, MAKE REFERENCE TO THIS BROCHURE AND TO THE DOCUMENTS REQUIRED BY SECTION 718.503, FLORIDA STATUTES, TO BE FURNISHED BY A DEVELOPER TO A BUYER OR LESSEE. This Condominium is being developed by FRM Associates LLC, a Florida limited liability company (the "Developer"). Neither Fortune International Group, KAR Properties nor Faena are the Developer. This is not intended to be an offer to sell, or solicitation to buy, condominium units to residents of any jurisdiction where prohibited by law, and your eligibility for purchase will depend upon your state of residency. This offering is made only by the prospectus for the condominium and no statement should be relied upon if not made in the prospectus. These materials should not be relied upon as representations, express or implied, of the final detail of the residences or the Condominium. All stated dimensions and ceiling heights are approximate and all floor plans and development plans are subject to change. Stated interior square footage is measured to the exterior face of exterior walls and to the centerline of interior demising walls or to the exterior face of walls adjoining corridors or other common elements or shared facilities without excluding areas that may be occupied by columns or other structural components. This method of measurement varies from, and is larger than, the dimensions that would be determined by using the description and the definition of the Unit set forth in the Declaration (which generally only includes the interior airspace between the perimeter walls and excludes structural components). For reference, the area of the unit, determined in accordance with the unit boundaries set forth in the Declaration is set forth in Exhibit "3" to the Declaration.

DEVELOPED BY  
**FORTUNE  
INTERNATIONAL  
GROUP** **KAR  
PROPERTIES**