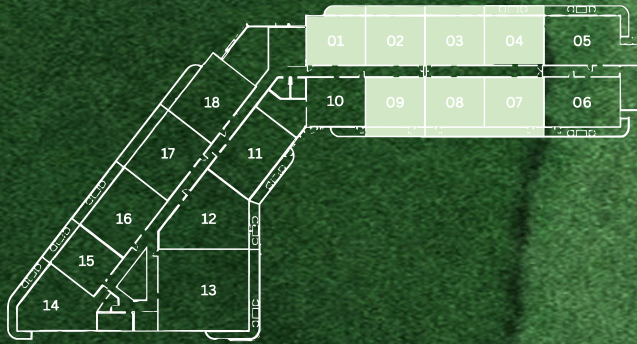


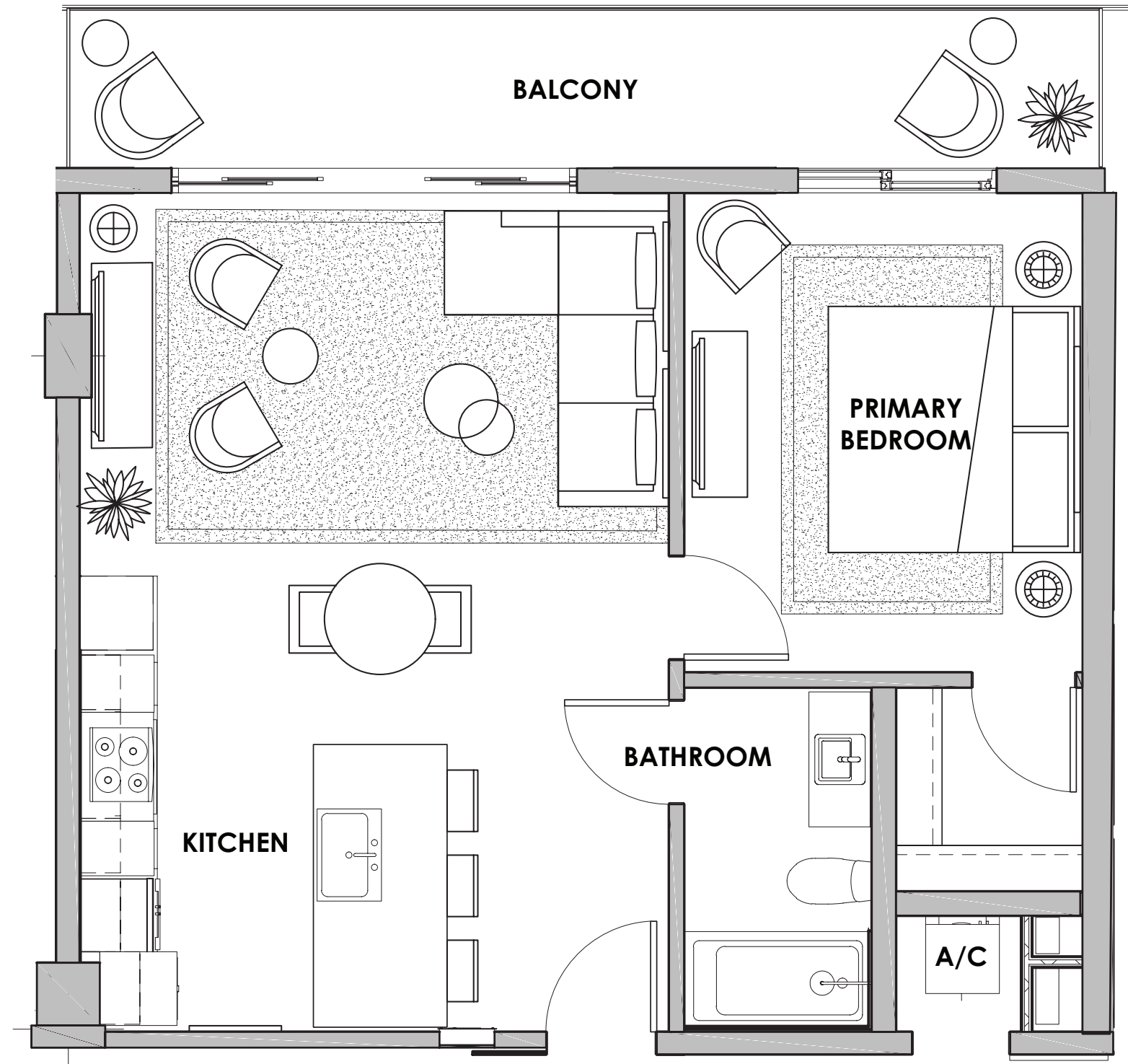
SEVEN PARK



RESIDENCE 01 - 04 & 07 - 09

1 BEDROOM
1 BATHROOM

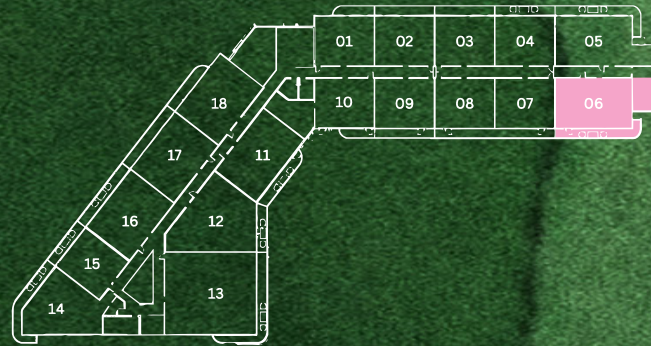
TOTAL	789.15 SF / 73.32 M2
INTERIOR	660 SF / 61.32 M2
BALCONY	129.15 SF / 12 M2



 ORAL REPRESENTATIONS CANNOT BE RELIED UPON AS CORRECTLY STATING REPRESENTATIONS OF THE DEVELOPER. FOR CORRECT REPRESENTATIONS, MAKE REFERENCE TO THIS BROCHURE AND TO THE DOCUMENTS REQUIRED BY SECTION 718.503, FLORIDA STATUTES, TO BE FURNISHED BY A DEVELOPER TO A BUYER OR LESSEE.

The dimensions stated for any depicted unit floor plan are approximate because there are various recognized methods for calculating the square footage of a unit. The square footage stated herein is calculated from the exterior boundaries of the exterior walls to the centerline of interior demising walls without deductions for cutouts, curves, or architectural features. This method typically results in quoted dimensions greater than the dimensions that would be determined by using other accepted methods. The definition of "Unit" and the calculation method to be relied upon is set forth in the Developer's prospectus and the method set forth in the Developer's prospectus may result in a square footage calculation less than the method used here. Consult the Developer's prospectus to understand the calculation of the Unit square footage and dimensions. Dimensions and Unit configuration may change during construction. Depictions of furnishings, fixtures and other items of personal property are not included with purchase. The illustrations and images are conceptual. The floor plan, unit layout, locations of windows, doors, closets, plumbing fixtures, mechanical equipment, appliances, structural elements, architectural design elements, and the uses, configurations, and entries to rooms may change based on final approved plans, permitting, and completed construction. The furniture layout and the uses of space illustrated are suggested uses only and not intended to guaranty any specific use of space or accommodation of specific furnishings.

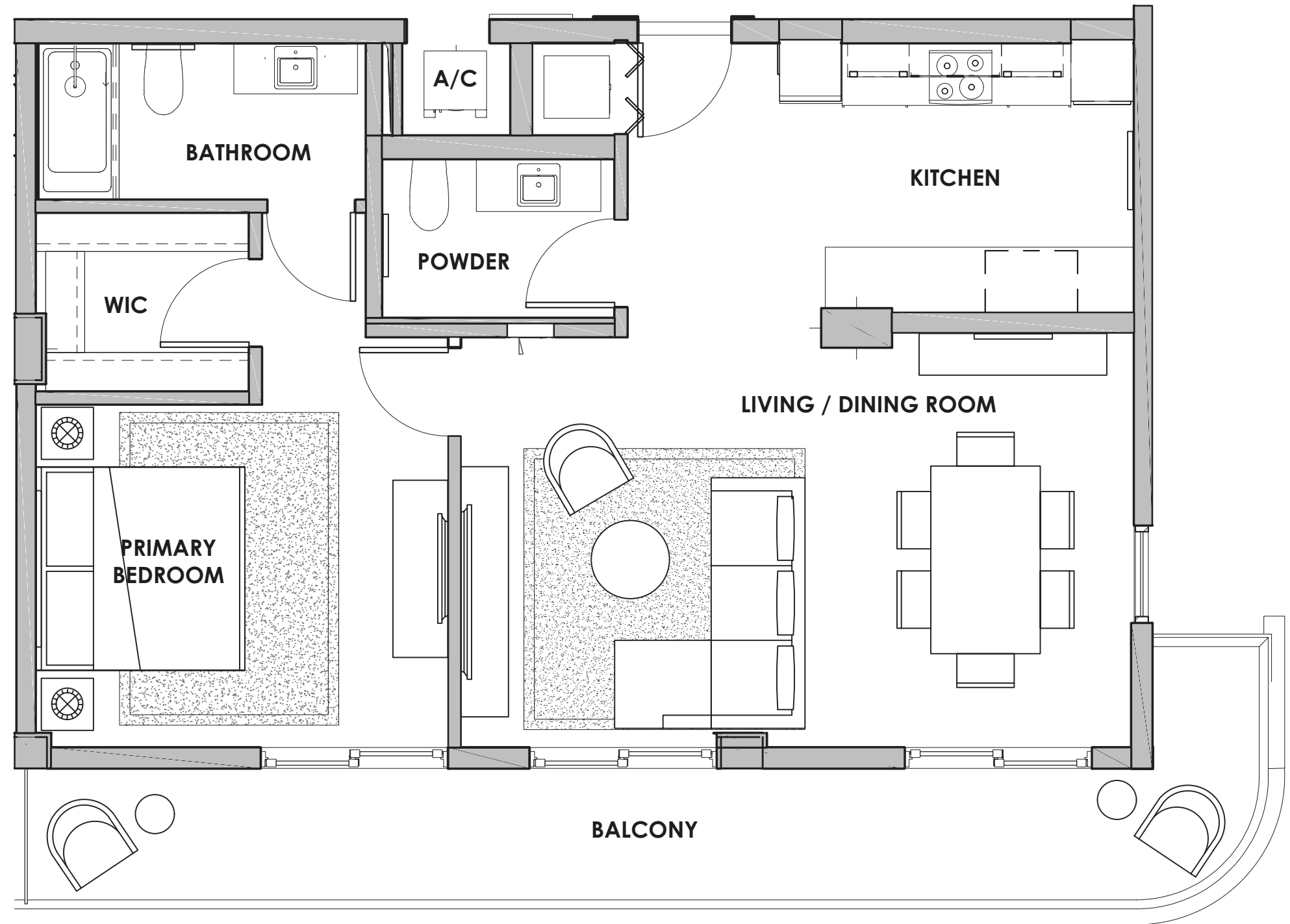
A NEW RESIDENTIAL DEVELOPMENT
IN THE HEART OF HALLANDALE BEACH



**RESIDENCE
06**

**1 BEDROOM
1.5 BATHROOMS**

TOTAL	1,023 SF / 95.05 M2
INTERIOR	844 SF / 78.41 M2
BALCONY	179 SF / 16.64 M2



 ORAL REPRESENTATIONS CANNOT BE RELIED UPON AS CORRECTLY STATING REPRESENTATIONS OF THE DEVELOPER. FOR CORRECT REPRESENTATIONS, MAKE REFERENCE TO THIS BROCHURE AND TO THE DOCUMENTS REQUIRED BY SECTION 718.503, FLORIDA STATUTES, TO BE FURNISHED BY A DEVELOPER TO A BUYER OR LESSEE.

The dimensions stated for any depicted unit floor plan are approximate because there are various recognized methods for calculating the square footage of a unit. The square footage stated herein is calculated from the exterior boundaries of the exterior walls to the centerline of interior demising walls without deductions for cutouts, curves, or architectural features. This method typically results in quoted dimensions greater than the dimensions that would be determined by using other accepted methods. The definition of "Unit" and the calculation method to be relied upon is set forth in the Developer's prospectus and the method set forth in the Developer's prospectus may result in a square footage calculation less than the method used here. Consult the Developer's prospectus to understand the calculation of the Unit square footage and dimensions. Dimensions and Unit configuration may change during construction. Depictions of furnishings, fixtures and other items of personal property are not included with purchase. The illustrations and images are conceptual. The floor plan, unit layout, locations of windows, doors, closets, plumbing fixtures, mechanical equipment, appliances, structural elements, architectural design elements, and the uses, configurations, and entries to rooms may change based on final approved plans, permitting, and completed construction. The furniture layout and the uses of space illustrated are suggested uses only and not intended to guaranty any specific use of space or accommodation of specific furnishings.

**A NEW RESIDENTIAL DEVELOPMENT
IN THE HEART OF HALLANDALE BEACH**