

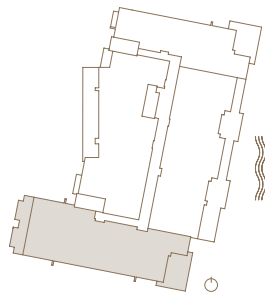
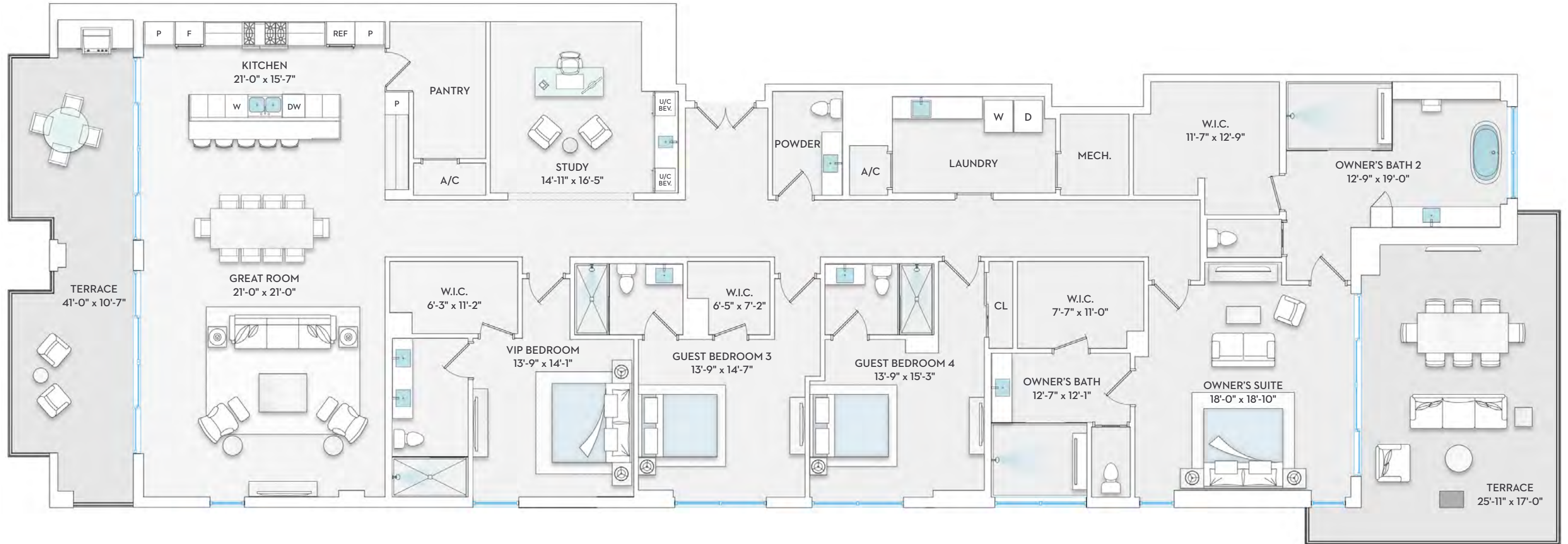
PENTHOUSE 01

East

4 Bedrooms + Den Interior 4,420 sqft
 4.5 Bathrooms Exterior 897 sqft
 Total 5,317 sqft



GULF SHORE
NAPLES



PROJECT ADDRESS 3300 Gulf Shore Blvd N, Naples, FL 34102

KOLTERURBAN

ORAL REPRESENTATIONS CANNOT BE RELIED UPON AS CORRECTLY STATING THE REPRESENTATIONS OF THE DEVELOPER. FOR CORRECT REPRESENTATIONS, MAKE REFERENCE TO THIS BROCHURE AND TO THE DOCUMENTS REQUIRED BY SECTION 718.503, FLORIDA STATUTES, TO BE FURNISHED BY A DEVELOPER TO A BUYER OR LESSEE. Stated interior square footage is measured to the exterior face of exterior walls and to the centerline of interior demising walls or to the exterior face of walls adjoining corridors or other common elements without excluding areas that may be occupied by columns or other structural components. This method of measurement varies from, and is larger than, the dimensions that would be determined by using the description and the definition of the Unit set forth in the Declaration (which generally only includes the interior airspace between the perimeter walls and excludes structural components). For reference, the area of the unit, determined in accordance with the unit boundaries set forth in the Declaration is set forth in Exhibit "3" to the Declaration. All dimensions are approximate and may vary with actual construction. Note that the stated interior square footage includes a portion of the Unit which is a non-contiguous storage closet located in the core of the building which is not depicted herein. See Exhibit "2" to the Declaration for the location and dimensions of the non-contiguous storage closet which is part of the Unit and included in the interior square footage described here in.

PENTHOUSE 02

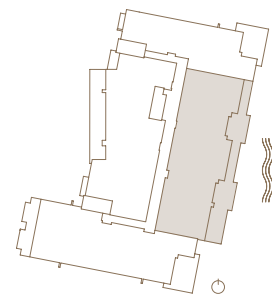
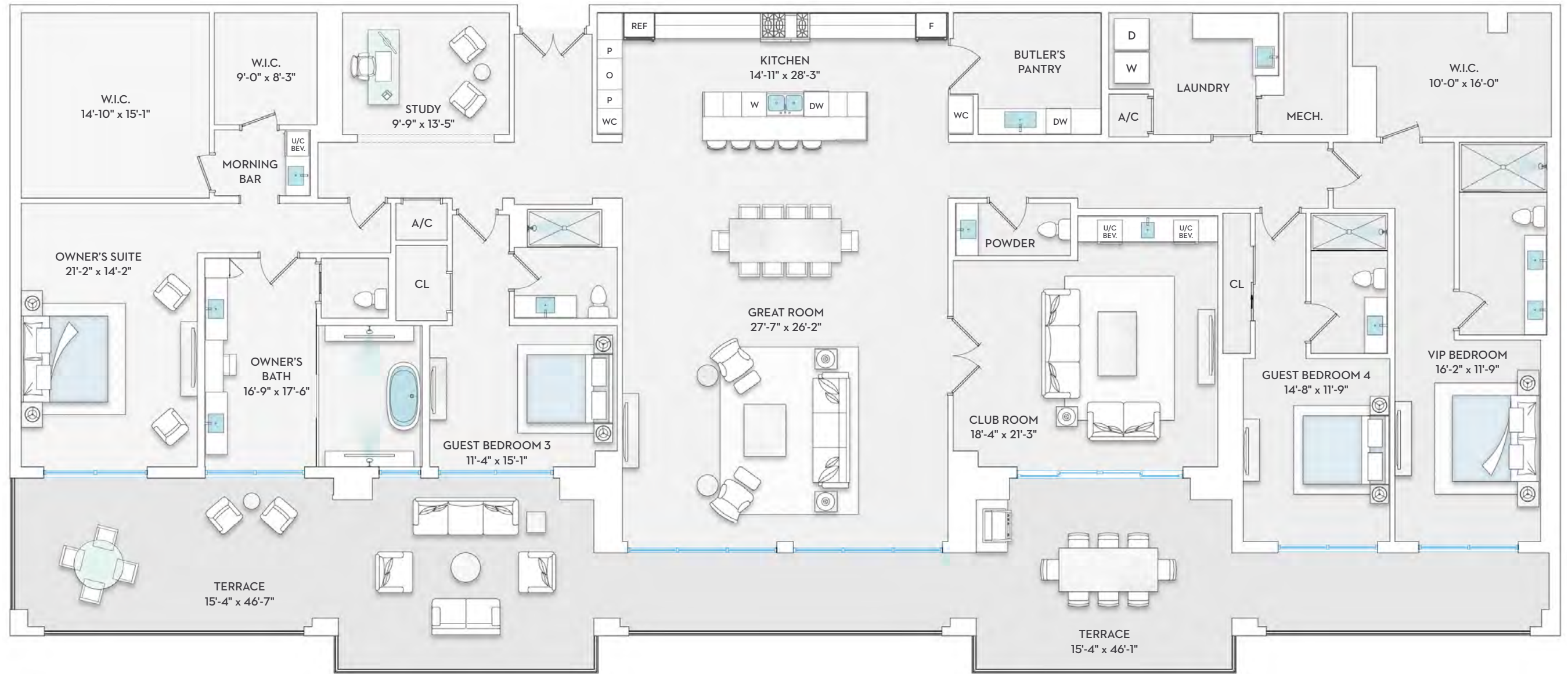
East

4 Bedrooms + Den
4.5 Bathrooms

Interior 5,009 sqft
Exterior 1,340 sqft
Total 6,349 sqft



GULF SHORE
NAPLES



PROJECT ADDRESS 3300 Gulf Shore Blvd N, Naples, FL 34102

KOLTERURBAN

ORAL REPRESENTATIONS CANNOT BE RELIED UPON AS CORRECTLY STATING THE REPRESENTATIONS OF THE DEVELOPER. FOR CORRECT REPRESENTATIONS, MAKE REFERENCE TO THIS BROCHURE AND TO THE DOCUMENTS REQUIRED BY SECTION 718.503, FLORIDA STATUTES, TO BE FURNISHED BY A DEVELOPER TO A BUYER OR LESSEE. Stated interior square footage is measured to the exterior face of exterior walls and to the centerline of interior demising walls or to the exterior face of walls adjoining corridors or other common elements without excluding areas that may be occupied by columns or other structural components. This method of measurement varies from, and is larger than, the dimensions that would be determined by using the description and the definition of the Unit set forth in the Declaration (which generally only includes the interior airspace between the perimeter walls and excludes structural components). For reference, the area of the unit, determined in accordance with the unit boundaries set forth in the Declaration is set forth in Exhibit "3" to the Declaration. All dimensions are approximate and may vary with actual construction. Note that the stated interior square footage includes a portion of the Unit which is a non-contiguous storage closet located in the core of the building which is not depicted herein. See Exhibit "2" to the Declaration for the location and dimensions of the non-contiguous storage closet which is part of the Unit and included in the interior square footage described here in.

PENTHOUSE 03

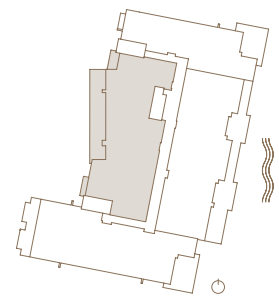
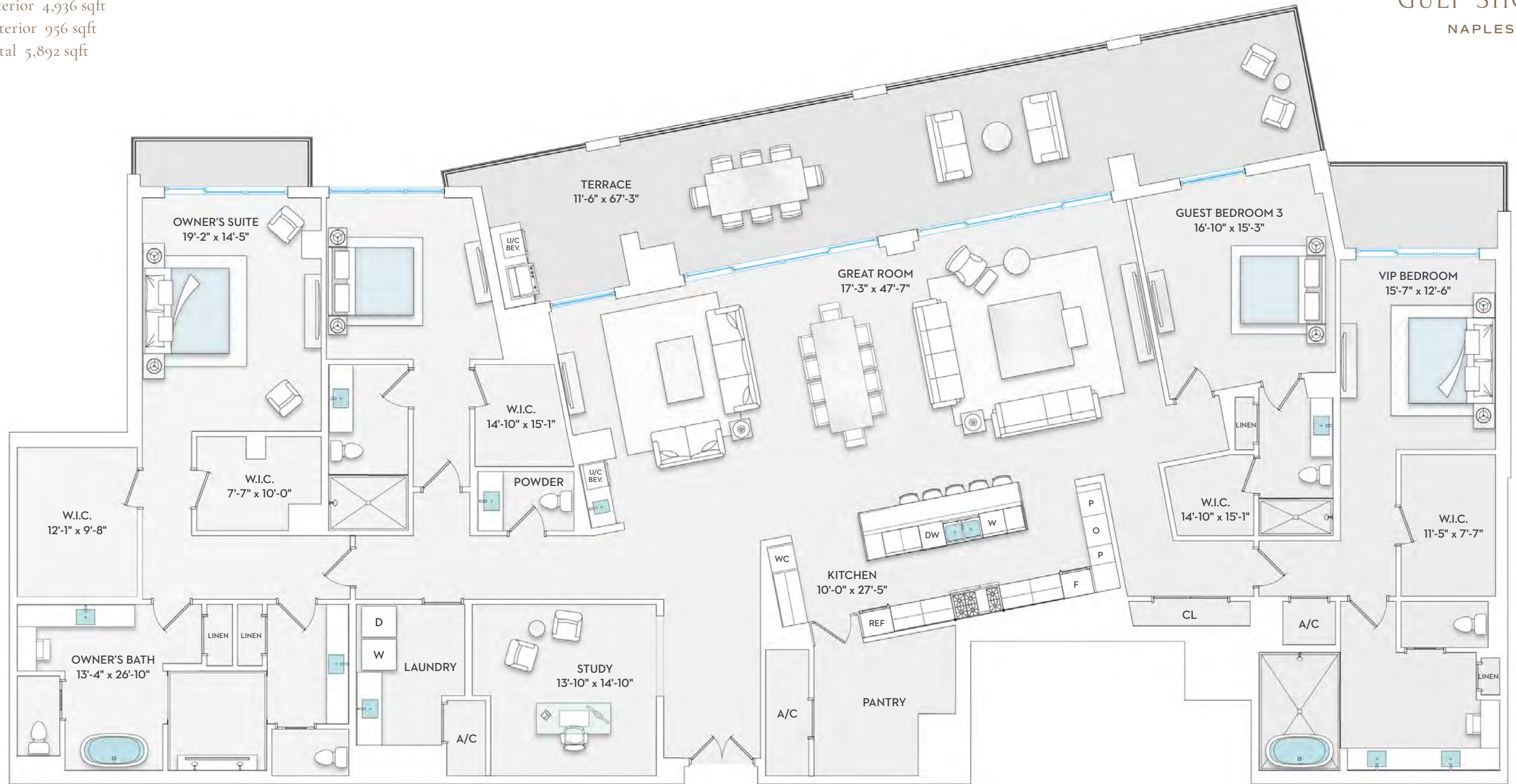
East

4 Bedrooms + Den
4.5 Bathrooms

Interior 4,936 sqft
Exterior 956 sqft
Total 5,892 sqft



GULF SHORE
NAPLES



PROJECT ADDRESS 3300 Gulf Shore Blvd N, Naples, FL 34102

KOLTERURBAN

ORAL REPRESENTATIONS CANNOT BE RELIED UPON AS CORRECTLY STATING THE REPRESENTATIONS OF THE DEVELOPER. FOR CORRECT REPRESENTATIONS, MAKE REFERENCE TO THIS BROCHURE AND TO THE DOCUMENTS REQUIRED BY SECTION 718.503, FLORIDA STATUTES, TO BE FURNISHED BY A DEVELOPER TO A BUYER OR LESSEE. Stated interior square footage is measured to the exterior face of exterior walls and to the centerline of interior demising walls or to the exterior face of walls adjoining corridors or other common elements without excluding areas that may be occupied by columns or other structural components. This method of measurement varies from, and is larger than, the dimensions that would be determined by using the description and the definition of the Unit set forth in the Declaration (which generally only includes the interior airspace between the perimeter walls and excludes structural components). For reference, the area of the unit, determined in accordance with the unit boundaries set forth in the Declaration is set forth in Exhibit "3" to the Declaration. All dimensions are approximate and may vary with actual construction. Note that the stated interior square footage includes a portion of the Unit which is a non-contiguous storage closet located in the core of the building which is not depicted herein. See Exhibit "2" to the Declaration for the location and dimensions of the non-contiguous storage closet which is part of the Unit and included in the interior square footage described here in.

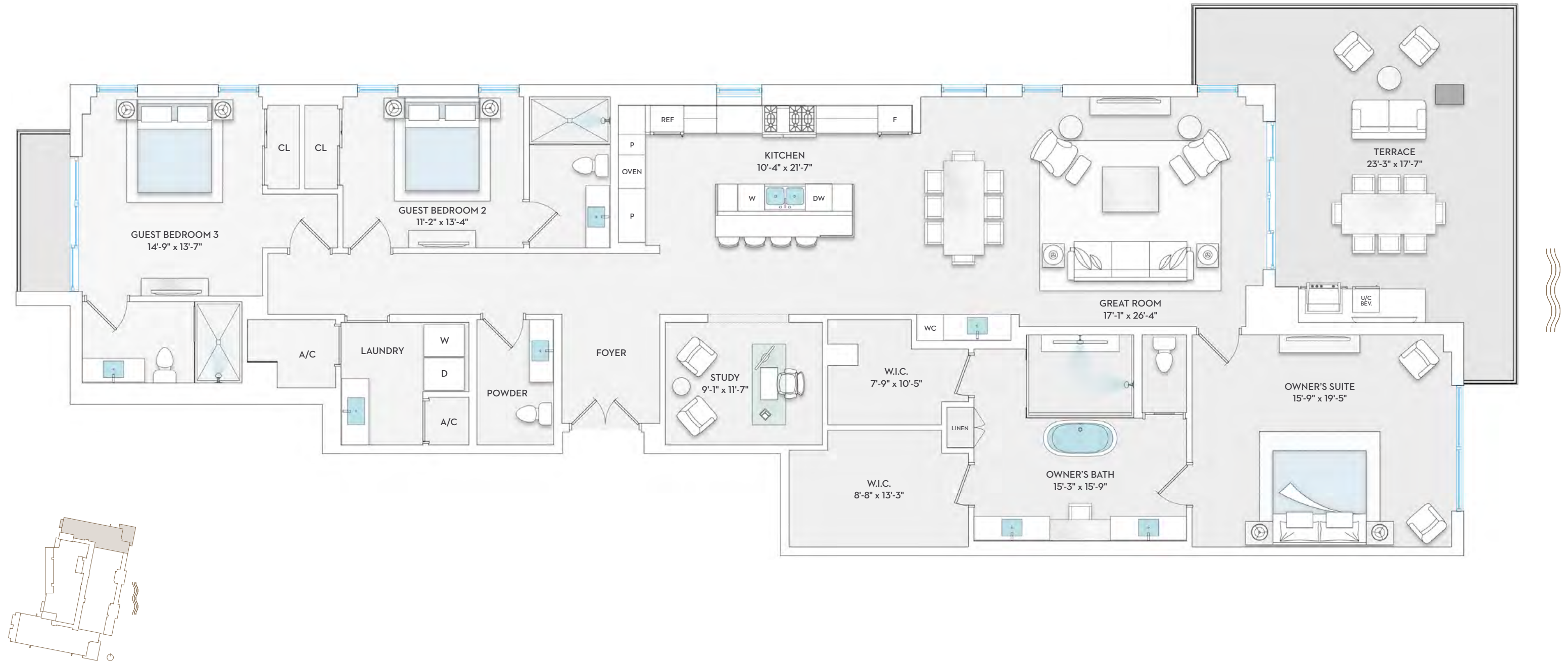
PENTHOUSE 04

East

3 Bedrooms + Den
 3.5 Bathrooms
 Interior 2,830 sqft
 Exterior 525 sqft
 Total 3,355 sqft



GULF SHORE
NAPLES



PROJECT ADDRESS 3300 Gulf Shore Blvd N, Naples, FL 34102

KOLTERURBAN

ORAL REPRESENTATIONS CANNOT BE RELIED UPON AS CORRECTLY STATING THE REPRESENTATIONS OF THE DEVELOPER. FOR CORRECT REPRESENTATIONS, MAKE REFERENCE TO THIS BROCHURE AND TO THE DOCUMENTS REQUIRED BY SECTION 718.503, FLORIDA STATUTES, TO BE FURNISHED BY A DEVELOPER TO A BUYER OR LESSEE. Stated interior square footage is measured to the exterior face of exterior walls and to the centerline of interior demising walls or to the exterior face of walls adjoining corridors or other common elements without excluding areas that may be occupied by columns or other structural components. This method of measurement varies from, and is larger than, the dimensions that would be determined by using the description and the definition of the Unit set forth in the Declaration (which generally only includes the interior airspace between the perimeter walls and excludes structural components). For reference, the area of the unit, determined in accordance with the unit boundaries set forth in the Declaration is set forth in Exhibit "3" to the Declaration. All dimensions are approximate and may vary with actual construction. Note that the stated interior square footage includes a portion of the Unit which is a non-contiguous storage closet located in the core of the building which is not depicted herein. See Exhibit "2" to the Declaration for the location and dimensions of the non-contiguous storage closet which is part of the Unit and included in the interior square footage described here in.

PENTHOUSE 05

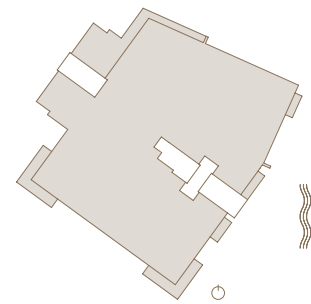
West

5 Bedrooms + Den
 5 Bathrooms
 2 Powder Bathrooms

Interior 7,669 sqft
 Exterior 1,697 sqft
 Total 9,366 sqft



GULF SHORE
 NAPLES



PROJECT ADDRESS 3300 Gulf Shore Blvd N, Naples, FL 34102

KOLTERURBAN

ORAL REPRESENTATIONS CANNOT BE RELIED UPON AS CORRECTLY STATING THE REPRESENTATIONS OF THE DEVELOPER. FOR CORRECT REPRESENTATIONS, MAKE REFERENCE TO THIS BROCHURE AND TO THE DOCUMENTS REQUIRED BY SECTION 718.503, FLORIDA STATUTES, TO BE FURNISHED BY A DEVELOPER TO A BUYER OR LESSEE. Stated interior square footage is measured to the exterior face of exterior walls and to the centerline of interior demising walls or to the exterior face of walls adjoining corridors or other common elements without excluding areas that may be occupied by columns or other structural components. This method of measurement varies from, and is larger than, the dimensions that would be determined by using the description and the definition of the Unit set forth in the Declaration (which generally only includes the interior airspace between the perimeter walls and excludes structural components). For reference, the area of the unit, determined in accordance with the unit boundaries set forth in the Declaration is set forth in Exhibit "3" to the Declaration. All dimensions are approximate and may vary with actual construction. Note that the stated interior square footage includes a portion of the Unit which is a non-contiguous storage closet located in the core of the building which is not depicted herein. See Exhibit "2" to the Declaration for the location and dimensions of the non-contiguous storage closet which is part of the Unit and included in the interior square footage described here in.