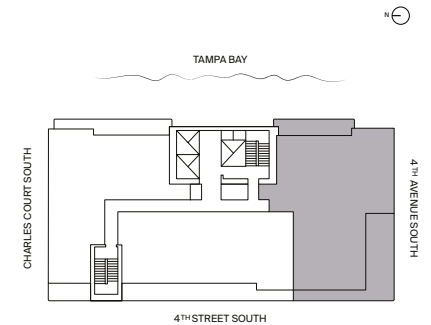


PENTHOUSE 1

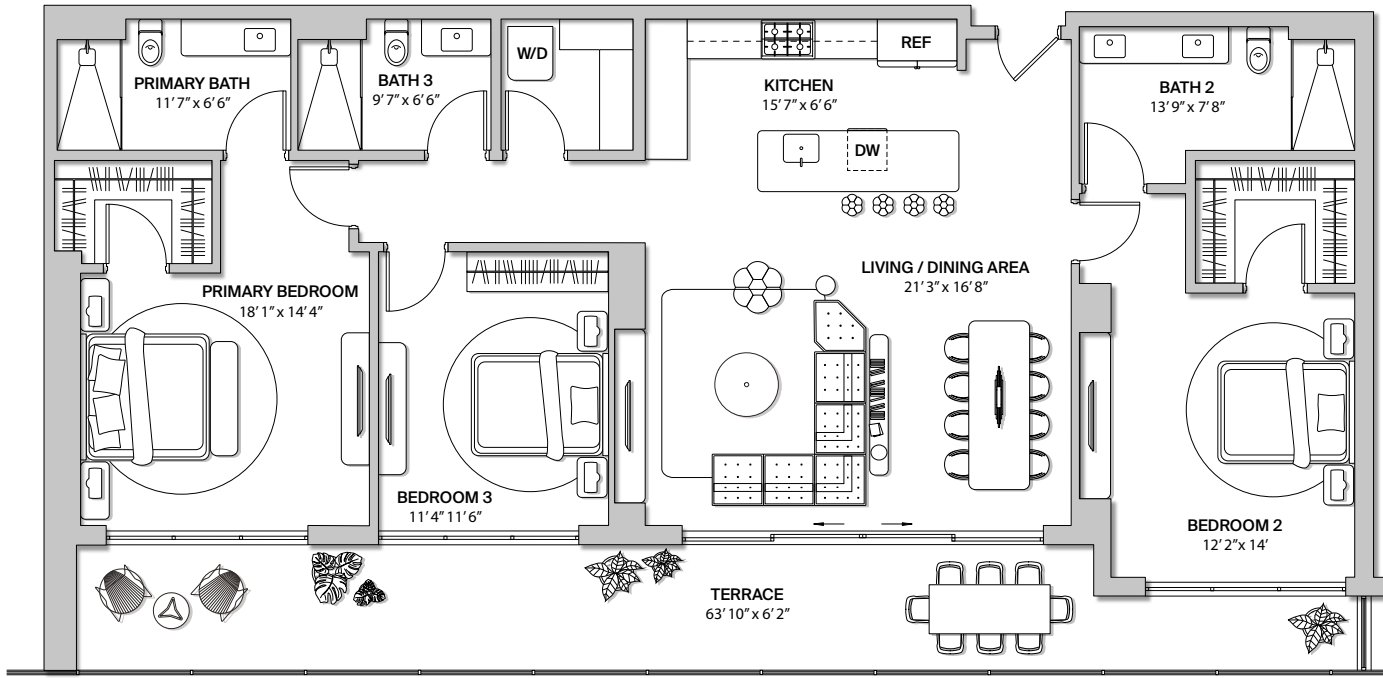
LEVEL 28

3 BEDROOMS
3.5 BATHROOMS

INTERIOR	2,164 SQ FT	201 SQ M
EXTERIOR	623 SQ FT	58 SQ M
TOTAL	2,787 SQ FT	259 SQ M



Stated dimensions are measured to the exterior boundaries of the exterior walls and the centerline of interior demising walls and in fact vary from the dimensions that would be determined by using the description and definition of the "Unit" set forth in the Declaration (which generally only includes the interior airspace between the perimeter walls and excludes interior structural components). For your reference, the area of the Unit, determined in accordance with those defined unit boundaries, is set forth in the Declaration of Condominium. Note that measurements of rooms set forth on this floor plan are generally taken at the greatest points of each given room (as if the room were a perfect rectangle), without regard for any cutouts. Accordingly, the area of the actual room will typically be smaller than the product obtained by multiplying the stated length times width. All dimensions are approximate and may vary with actual construction, and all floor plans and development plans are subject to change. Roche Bobois assumes no responsibility or liability in connection with the project, and makes no representation or warranty in respect thereof. Please refer to website for all disclaimers: <https://rocheboboissttower.com/legal>

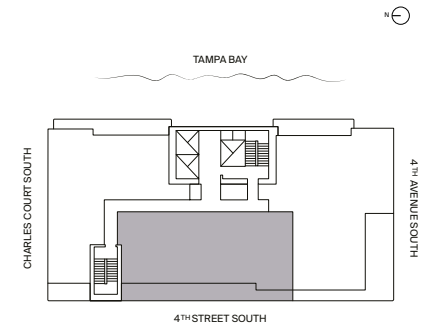


PENTHOUSE 2

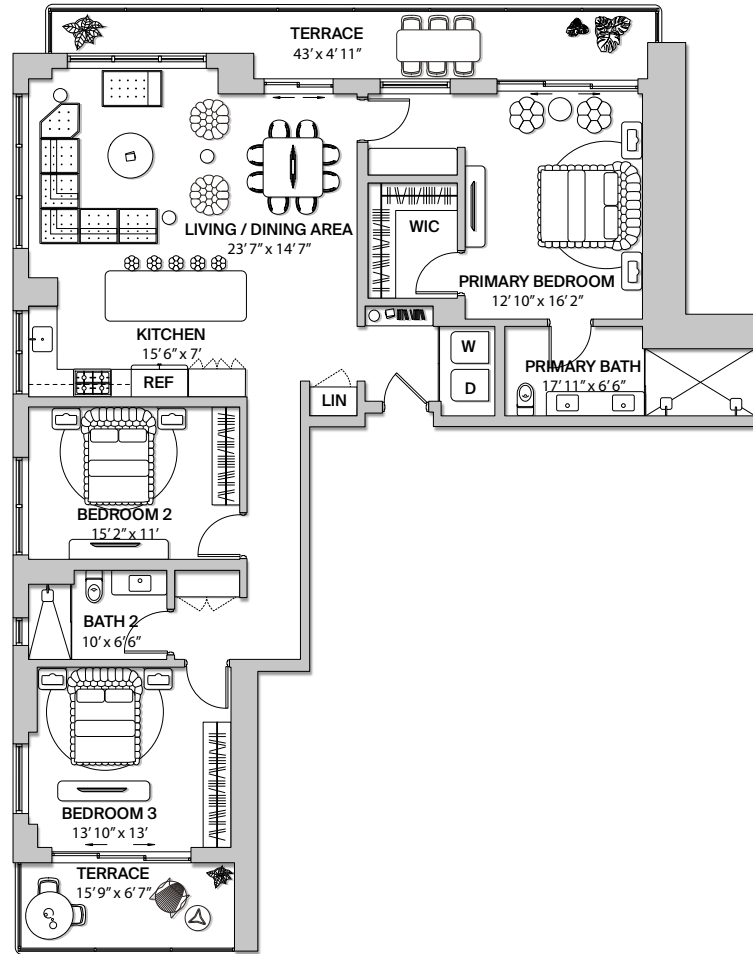
LEVEL 28

3 BEDROOMS
3 BATHROOMS

INTERIOR	1,739 SQ FT	162 SQ M
EXTERIOR	389 SQ FT	36 SQ M
TOTAL	2,128 SQ FT	198 SQ M



Stated dimensions are measured to the exterior boundaries of the exterior walls and the centerline of interior demising walls and in fact vary from the dimensions that would be determined by using the description and definition of the "Unit" set forth in the Declaration (which generally only includes the interior airspace between the perimeter walls and excludes interior structural components). For your reference, the area of the Unit, determined in accordance with those defined unit boundaries, is set forth in the Declaration of Condominium. Note that measurements of rooms set forth on this floor plan are generally taken at the greatest points of each given room (as if the room were a perfect rectangle), without regard for any cutouts. Accordingly, the area of the actual room will typically be smaller than the product obtained by multiplying the stated length times width. All dimensions are approximate and may vary with actual construction, and all floor plans and development plans are subject to change. Roche Bobois assumes no responsibility or liability in connection with the project, and makes no representation or warranty in respect thereof. Please refer to website for all disclaimers: <https://rocheboboistower.com/legal>

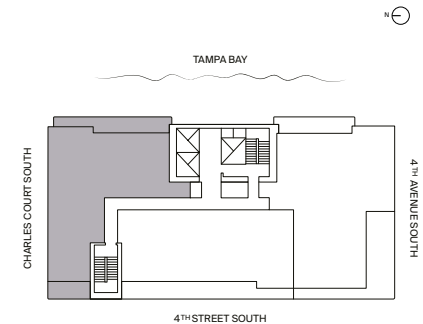


PENTHOUSE 3

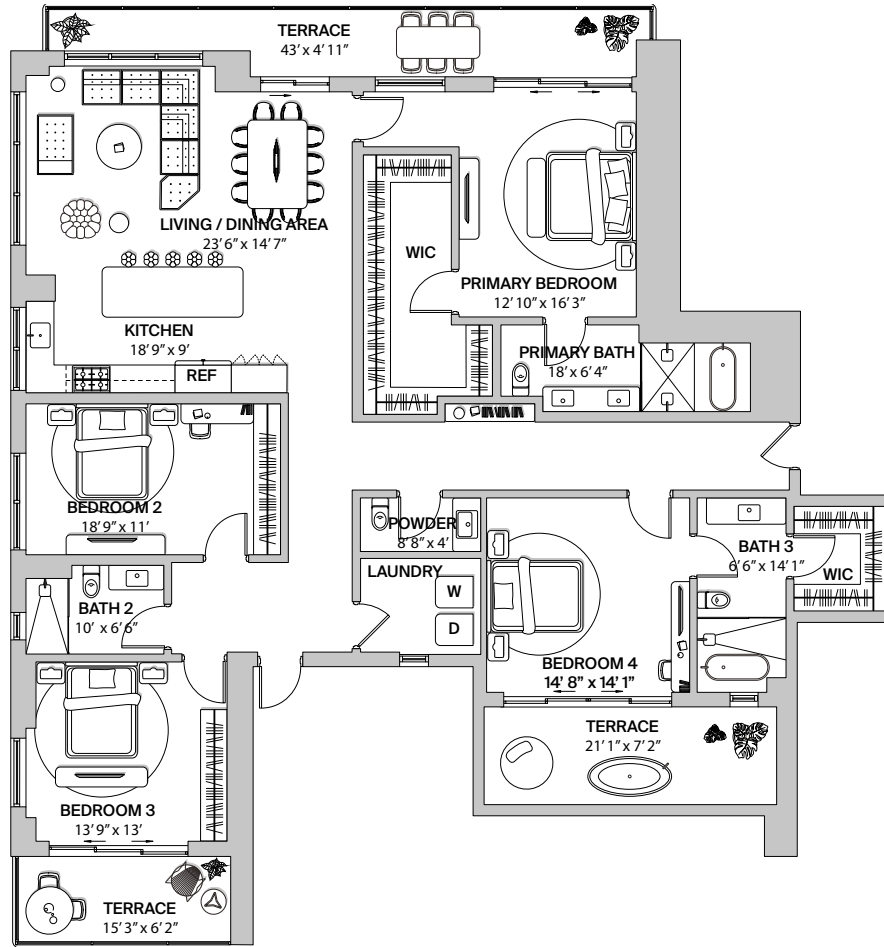
LEVEL 28

3 BEDROOMS
2 BATHROOMS

INTERIOR	1,763 SQ FT	164 SQ M
EXTERIOR	323 SQ FT	30 SQ M
TOTAL	2,086 SQ FT	194 SQ M



Stated dimensions are measured to the exterior boundaries of the exterior walls and the centerline of interior demising walls and in fact vary from the dimensions that would be determined by using the description and definition of the "Unit" set forth in the Declaration (which generally only includes the interior airspace between the perimeter walls and excludes interior structural components). For your reference, the area of the Unit, determined in accordance with those defined unit boundaries, is set forth in the Declaration of Condominium. Note that measurements of rooms set forth on this floor plan are generally taken at the greatest points of each given room (as if the room were a perfect rectangle), without regard for any cutouts. Accordingly, the area of the actual room will typically be smaller than the product obtained by multiplying the stated length times width. All dimensions are approximate and may vary with actual construction, and all floor plans and development plans are subject to change. Roche Bobois assumes no responsibility or liability in connection with the project, and makes no representation or warranty in respect thereof. Please refer to website for all disclaimers: <https://rocheboboissttower.com/legal>

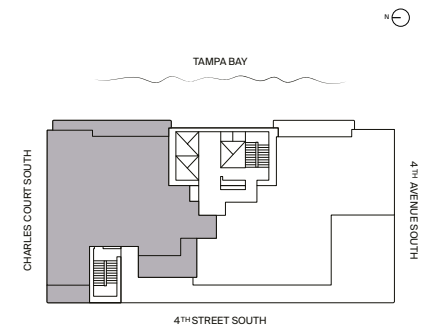


SKY PENTHOUSE 2

LEVEL 29

4 BEDROOMS
3.5 BATHROOMS

INTERIOR	2,503 SQ FT	233 SQ M
EXTERIOR	488 SQ FT	45 SQ M
TOTAL	2,991 SQ FT	278 SQ M



Stated dimensions are measured to the exterior boundaries of the exterior walls and the centerline of interior demising walls and in fact vary from the dimensions that would be determined by using the description and definition of the "Unit" set forth in the Declaration (which generally only includes the interior airspace between the perimeter walls and excludes interior structural components). For your reference, the area of the Unit, determined in accordance with those defined unit boundaries, is set forth in the Declaration of Condominium. Note that measurements of rooms set forth on this floor plan are generally taken at the greatest points of each given room (as if the room were a perfect rectangle), without regard for any cutouts. Accordingly, the area of the actual room will typically be smaller than the product obtained by multiplying the stated length times width. All dimensions are approximate and may vary with actual construction, and all floor plans and development plans are subject to change. Roche Bobois assumes no responsibility or liability in connection with the project, and makes no representation or warranty in respect thereof. Please refer to website for all disclaimers: <https://rocheboboistower.com/legal>