



ALHAMBRA PARC
CORAL GABLES

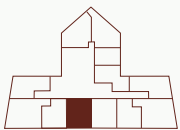


RESIDENCE 03 LEVEL 4

♦
2 BED + 2.5 BATH
STUDIO/DEN
2 BALCONIES

♦
INTERIOR: 1,629 SQ. FT. / 151.34 SQ. MT.
BALCONY 1: 204 SQ. FT. / 18.95 SQ. MT.
BALCONY 2: 225 SQ. FT. / 20.90 SQ. MT.
TOTAL: 2,058 SQ. FT. / 191.19 SQ. MT.

♦
The drawings, specifications, dimensions and any other information in these floor plans are conceptual and for illustration purposes only and should not be relied upon. References should be made to accurate detailed information of the floor plans including calculation of square footage, dimensions, and other information.



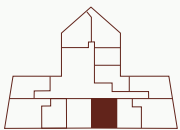


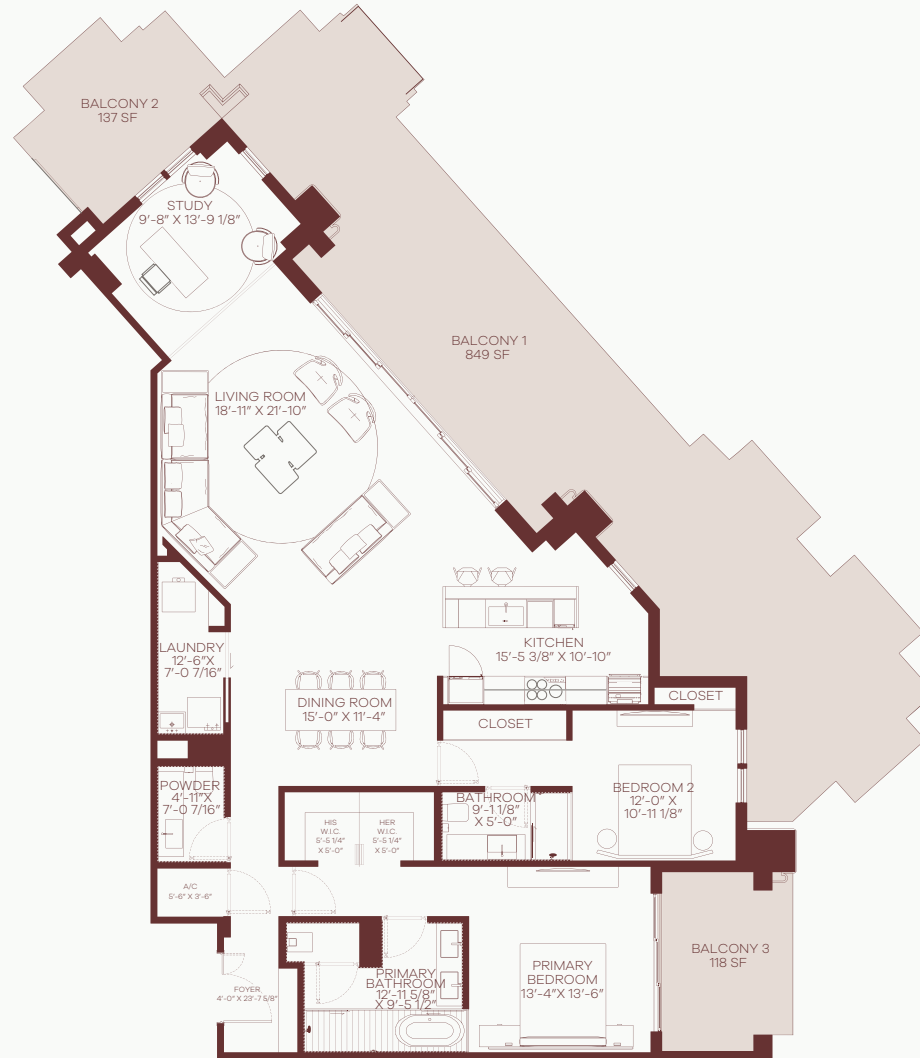
RESIDENCE 04
LEVEL 4

♦
2 BED + 2.5 BATH
STUDIO/DEN
2 BALCONIES

♦
INTERIOR: 1,629 SQ. FT. / 151.34 SQ. MT.
BALCONY 1: 204 SQ. FT. / 18.95 SQ. MT.
BALCONY 2: 225 SQ. FT. / 20.90 SQ. MT.
TOTAL: 2,058 SQ. FT. / 191,19 SQ. MT.

♦
The drawings, specifications, dimensions and any other information in these floor plans are conceptual and for illustration purposes only and should not be relied upon. References should be made to accurate detailed information of the floor plans including calculation of square footage, dimensions, and other information.



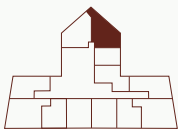


RESIDENCE 10
LEVEL 4

2 BED + 2.5 BATH
 STUDIO/DEN
 3 BALCONIES

INTERIOR: 1,925 SQ. FT. / 178.83 SQ. MT.
 BALCONY 1: 849 SQ. FT. / 78.88 SQ. MT.
 BALCONY 2: 118 SQ. FT. / 10.96 SQ. MT.
 BALCONY 3: 137 SQ. FT. / **XX SQ. MT.**
TOTAL: 3,029 SQ. FT. / 243,68 SQ. MT.

The drawings, specifications, dimensions and any other information in these floor plans are conceptual and for illustration purposes only and should not be relied upon. References should be made to accurate detailed information of the floor plans including calculation of square footage, dimensions, and other information.





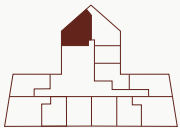
ALHAMBRA PARC
CORAL GABLES



RESIDENCE 11 LEVEL 4

2 BED + 2.5 BATH
STUDIO/DEN
1 BALCONY

INTERIOR: 1,671 SQ. FT. / 155.24 SQ. MT.
BALCONY 1: 941 SQ. FT. / 87.43 SQ. MT.
TOTAL: 2,612 SQ. FT. / 242.67 SQ. MT.



The drawings, specifications, dimensions and any other information in these floor plans are conceptual and for illustration purposes only and should not be relied upon. References should be made to accurate detailed information of the floor plans including calculation of square footage, dimensions, and other information.



ALHAMBRA PARC
CORAL GABLES

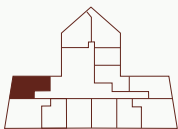


RESIDENCE 12
LEVEL 4

2 BED + 2.5 BATH
FAMILY ROOM
2 BALCONIES

INTERIOR: 1,859 SQ. FT. / 172.71 SQ. MT.
BALCONY 1: 898 SQ. FT. / 83.43 SQ. MT.
BALCONY 2: 369 SQ. FT. / 34.28 SQ. MT.
TOTAL: 3,126 SQ. FT. / 290.42 SQ. MT.

The drawings, specifications, dimensions and any other information in these floor plans are conceptual and for illustration purposes only and should not be relied upon. References should be made to accurate detailed information of the floor plans including calculation of square footage, dimensions, and other information.





RESIDENCE 04

LEVELS 5-8

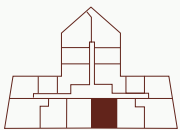


2 BED + 2.5 BATH
STUDIO/DEN
1 BALCONY

INTERIOR: 1,621 SQ. FT. / 150.58 SQ. MT.
BALCONY 1: 142 SQ. FT. / 13.19 SQ. MT.
TOTAL: 1,763 SQ. FT. / 163.77 SQ. MT.



The drawings, specifications, dimensions and any other information in these floor plans are conceptual and for illustration purposes only and should not be relied upon. References should be made to accurate detailed information of the floor plans including calculation of square footage, dimensions, and other information.





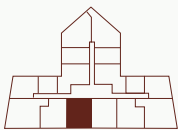
RESIDENCE 03

LEVELS 5-8

♦
2 BED + 2.5 BATH
STUDIO/DEN
1 BALCONY

INTERIOR: 1,621 SQ. FT. / 150.58 SQ. MT.
BALCONY 1: 142 SQ. FT. / 13.19 SQ. MT.
TOTAL: 1,763 SQ. FT. / 163.77 SQ. MT.

♦
The drawings, specifications, dimensions and any other information in these floor plans are conceptual and for illustration purposes only and should not be relied upon. References should be made to accurate detailed information of the floor plans including calculation of square footage, dimensions, and other information.

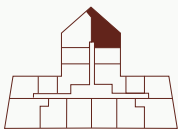




RESIDENCE 11
LEVELS 5-8

2 BED + 2.5 BATH
STUDIO/DEN
2 BALCONIES

INTERIOR: 1,905 SQ. FT. / 176.98 SQ. MT.
BALCONY 1: 148 SQ. FT. / 13.75 SQ. MT.
BALCONY 2: 132 SQ. FT. / 12.26 SQ. MT.
TOTAL: 2,185 SQ. FT. / 202.99 SQ. MT.



The drawings, specifications, dimensions and any other information in these floor plans are conceptual and for illustration purposes only and should not be relied upon. References should be made to accurate detailed information of the floor plans including calculation of square footage, dimensions, and other information.



ALHAMBRA PARC
CORAL GABLES

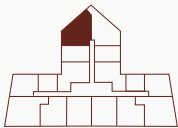


RESIDENCE 12

LEVELS 5-8

2 BED + 2.5 BATH
STUDIO/DEN
2 BALCONIES

INTERIOR: 1,665 SQ. FT. / 154.68 SQ. MT.
BALCONY 1: 147 SQ. FT. / 13.66 SQ. MT.
BALCONY 2: 132 SQ. FT. / 12.26 SQ. MT.
TOTAL: 1,944 SQ. FT. / 180.60 SQ. MT.



The drawings, specifications, dimensions and any other information in these floor plans are conceptual and for illustration purposes only and should not be relied upon. References should be made to accurate detailed information of the floor plans including calculation of square footage, dimensions, and other information.