



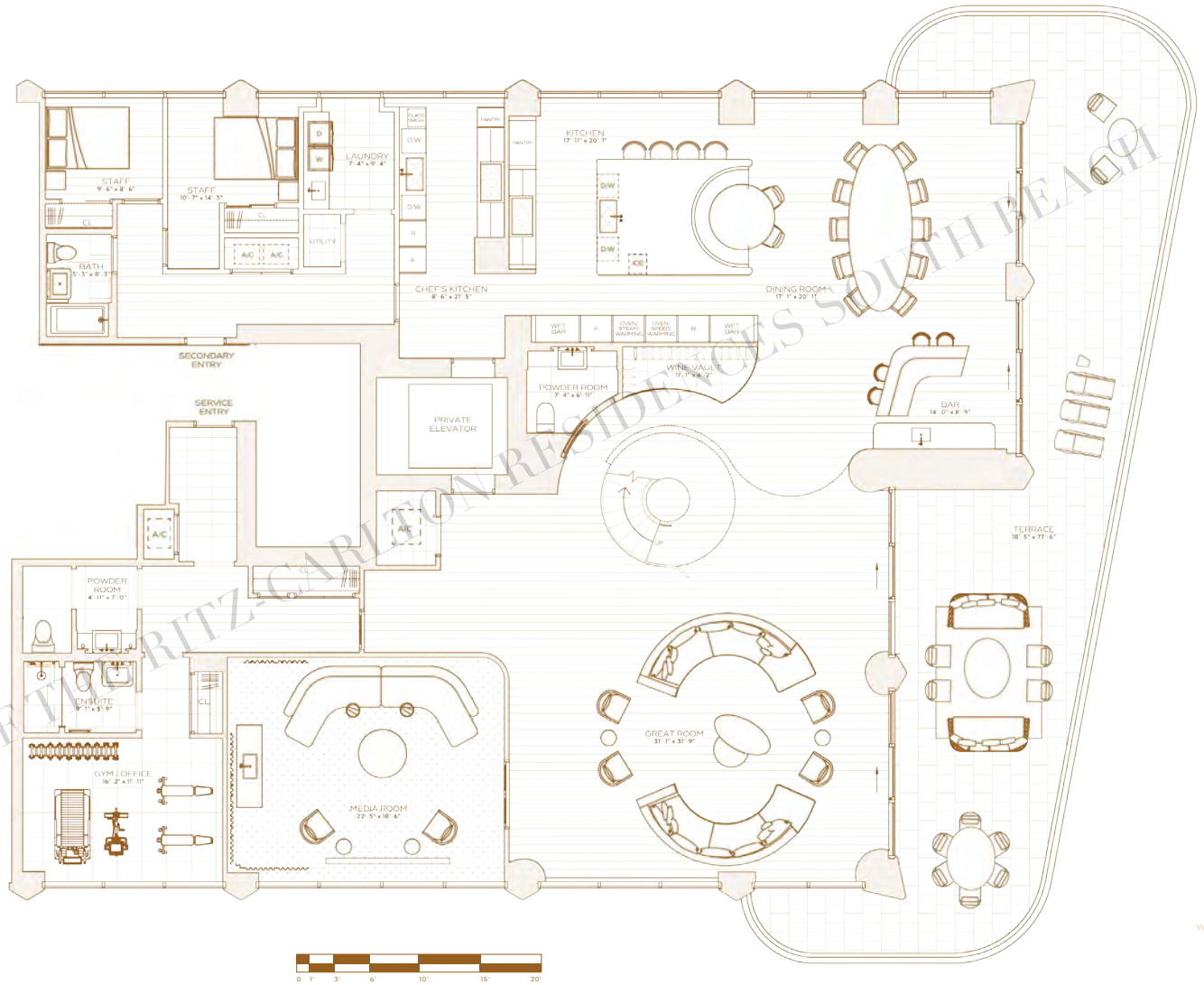
**PENTHOUSE A**  
**LEVEL 17**  
**LOWER FLOOR**

SEVEN BEDROOMS  
EIGHT BATHROOMS  
TWO POWDER ROOMS

**INTERIOR**  
8,104 SQ. FT / 753 SQ. M

**EXTERIOR**  
5,187 SQ. FT / 482 SQ. M

**TOTAL**  
13,291 SQ. FT / 1,235 SQ. M



THE RITZ-CARLTON RESIDENCES SOUTH BEACH ARE NOT OWNED, DEVELOPED OR SOLD BY THE RITZ-CARLTON HOTEL COMPANY LLC OR ITS AFFILIATES ("RITZ-CARLTON"). SOME SKY DEVELOPMENT LLC IS THE RITZ-CARLTON MARKS & TRADE LICENSEE FROM RITZ-CARLTON, WHO HAS NOT CONFIRMED THE ACCURACY OF ANY OF THE STATEMENTS OR REPRESENTATIONS MADE HEREIN. STATED INTERIOR SQUARE FOOTAGE IS MEASURED TO THE EXTERIOR FACE OF EXTERIOR WALLS AND TO THE CENTERLINE OF INTERIOR DIVIDING WALLS (OR TO THE EXTERIOR FACE OF WALLS ADJOINING CORRIDORS OR OTHER COMMON ELEMENTS OR SHARED FACILITIES WITHOUT EXCLUDING AREAS THAT MAY BE OCCUPIED BY COLUMNS OR OTHER STRUCTURAL COMPONENTS). THE METHOD OF MEASUREMENT (AREAS LARGER THAN THE DIMENSIONS THAT WILL BE DETERMINED BY LONG NEEDLE POSITION AND THE CENTERLINE OF THE UNIT SET FORTH IN THE DECLARATION) WHICH IS GENERALLY ONLY INCLUDES THE EXTERIOR WALLS AND EXCLUDES STRUCTURAL COMPONENTS FOR PERIMETER. THE AREA OF THE UNIT DETERMINED IN ACCORDANCE WITH THE UNIT SQUARE FEET SET FORTH IN THE DECLARATION IS APPROXIMATE AND MAY VARY WITH ACTUAL CONSTRUCTION. NOTE THAT MEASUREMENTS OF ROOMS SET FORTH ON THIS FLOOR PLAN ARE GENERALLY TAKEN AT THE GREATEST POINTS OF EACH ROOM. ROOMS ARE SHOWN AS PERFECT RECTANGLES WITHOUT REPRODUCTION OF CURVED WALLS OR PARTS. ACCORDINGLY, THE AREA OF THE ACTUAL ROOM WILL TYPICALLY BE SMALLER THAN THE PRODUCT OBTAINED BY MULTIPLYING THE STATED LENGTH TIMES WIDTH. ALL FLOOR PLAN AREAS ARE SUBJECT TO CHANGE. THE DELIVERED PRESSURE HEREIN IS THE RIGHT TO MAKE MODIFICATIONS, REVISIONS, AND CHANGES IN DESIGN, MATERIALS, APPLIANCES, BUILT-IN COUNTERTOPS, FLOORCOVERINGS, LIGHTING, LANDSCAPING AND OTHER MATTERS OF DETAIL, INCLUDING, WITHOUT LIMITATION, ITEMS OF FINISH AND DECORATION, ARE CONCEPTUAL ONLY AND ARE NOT NECESSARILY INCLUDED IN EACH UNIT. CONSULT YOUR PROSPECTUS AND PURCHASE AGREEMENT.





**THE RITZ-CARLTON RESIDENCES**  
SOUTH BEACH

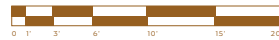
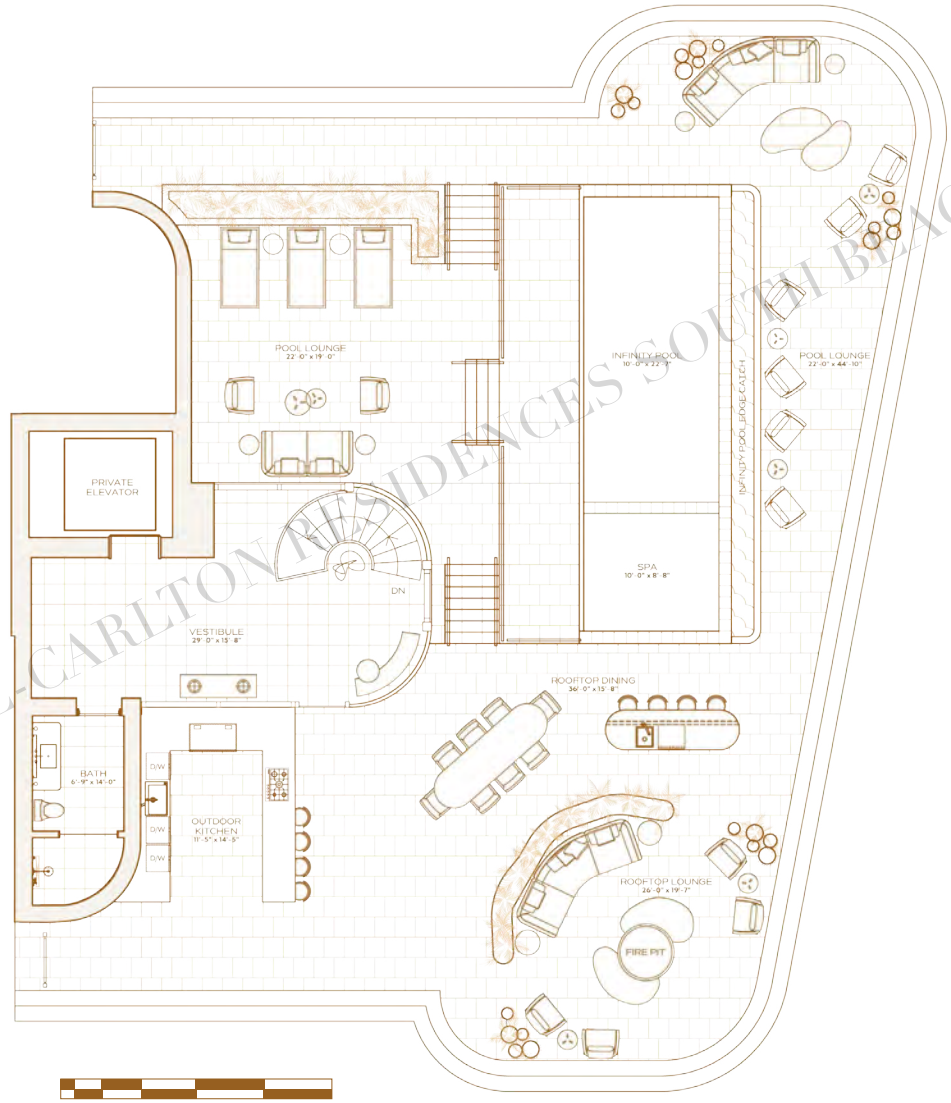
**PENTHOUSE A**  
LEVEL 19  
ROOFTOP

SEVEN BEDROOMS  
EIGHT BATHROOMS  
TWO POWDER ROOMS

**INTERIOR**  
8,104 SQ. FT. / 753 SQ. M

**EXTERIOR**  
5,187 SQ. FT. / 482 SQ. M

**TOTAL**  
13,291 SQ. FT. / 1,235 SQ. M



1671 COLLINS AVE.  
MIAMI BEACH, FL 33139

THE RITZ-CARLTON RESIDENCES SOUTH BEACH ARE NOT OWNED, DEVELOPED OR SOLD BY THE RITZ-CARLTON HOTEL COMPANY LLC OR ITS AFFILIATES ("RITZ-CARLTON"). SOME SKY DEVELOPMENT LLC IS THE RITZ-CARLTON MARKS & TRADE LICENSEE FROM RITZ-CARLTON, WHO HAS NOT CONFIRMED THE ACCURACY OF ANY OF THE STATEMENTS OR REPRESENTATIONS MADE HEREIN. STATION INTERIOR SQUARE FOOTAGE IS MEASURED TO THE EXTERIOR FACE OF EXTERIOR WALLS AND TO THE CENTERLINE OF INTERIOR DIVISION WALLS AND TO THE EXTERIOR FACE OF WALLS ADJOINING CORRIDORS OR OTHER COMMON ELEMENTS OR SHARED FACILITIES WITHOUT EXCLUDING AREAS THAT MAY BE OCCUPIED BY COLUMNS OR OTHER STRUCTURAL COMPONENTS. THE METHOD OF MEASUREMENT TAKEN HEREIN IS LARGER THAN THE DIMENSIONS THAT WOULD BE DETERMINED BY LONGITUDINAL MEASUREMENTS OF THE UNIT SET FORTH IN THE DECLARATION. ALL DIMENSIONS ARE APPROXIMATE AND MAY VARY WITH ACTUAL CONSTRUCTION. NOTE THAT MEASUREMENTS OF ROOMS SET FORTH IN THE FLOOR PLAN ARE GENERALLY TAKEN AT THE GREATEST POINTS OF EACH ROOM. AS WITH ROOMS HEREIN, PERFECT RECTANGLES WITHOUT RECESSES OR ANY OTHER IRREGULARITIES. ACCORDINGLY, THE AREA OF THE ACTUAL ROOM WILL TYPICALLY BE SMALLER THAN THE PRODUCT OBTAINED BY MULTIPLYING THE STATED LENGTH TIMES THE STATED WIDTH. FLOOR PLANS AND DEVELOPMENT PLANS ARE SUBJECT TO CHANGE. THE DEVELOPER DOES NOT WARRANT THE RIGHT TO MAKE MODIFICATIONS, REVISIONS, AND CHANGES IN DESIGN OR IN ITS SOLE AND ABSOLUTE DISCRETION. ALL DEPICTIONS OF PLUMBING, APPLIANCES, BUILT-IN COUNTERTOPS, SOFFITS, FLOORCOVERINGS, LIGHTING, LANDSCAPING AND OTHER MATTERS OF DETAIL, INCLUDING, WITHOUT LIMITATION, ITEMS OF FINISH AND DECORATION, ARE CONCEPTUAL ONLY AND ARE NOT NECESSARILY INCLUDED IN EACH UNIT. CONSULT YOUR PROSPECTUS AND PURCHASE AGREEMENT.



OCEAN



**THE RITZ-CARLTON RESIDENCES**  
SOUTH BEACH

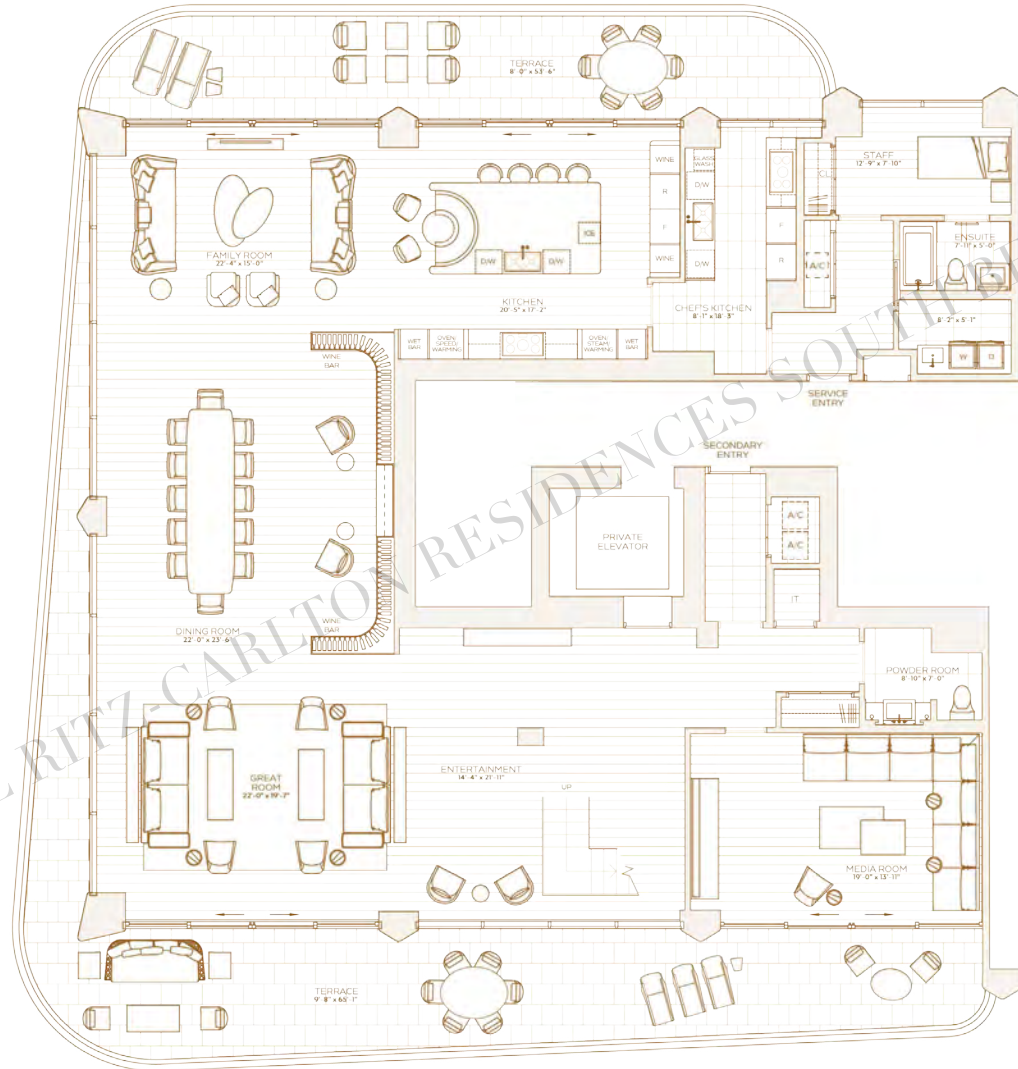
**PENTHOUSE B**  
LEVEL 17  
LOWER FLOOR

SIX BEDROOMS  
SEVEN BATHROOMS  
TWO POWDER ROOMS

**INTERIOR**  
6,534 SQ. FT. / 607 SQ. M

**EXTERIOR**  
4,977 SQ. FT. / 462 SQ. M

**TOTAL**  
11,511 SQ. FT. / 1,069 SQ. M



PROPERTY OF THE RITZ-CARLTON RESIDENCES SOUTH BEACH

OCEAN



1671 COLLINS AVE.  
MIAMI BEACH, FL 33139

THE RITZ-CARLTON RESIDENCES SOUTH BEACH ARE NOT OWNED, DEVELOPED OR SOLD BY THE RITZ-CARLTON HOTEL COMPANY LLC OR ITS AFFILIATES ("RITZ-CARLTON"). SOME SKY DEVELOPMENT LLC IS THE RITZ-CARLTON MARKS & TRADE LICENSE FROM RITZ-CARLTON, WHO HAS NOT CONFIRMED THE ACCURACY OF ANY OF THE STATEMENTS OR REPRESENTATIONS MADE HEREIN. STATION INTERIOR SQUARE FOOTAGE IS MEASURED TO THE EXTERIOR FACE OF INTERIOR WALLS AND TO THE CENTERLINE OF INTERIOR DIVIDING WALLS (OR TO THE EXTERIOR FACE OF WALLS ADJOINING CORRIDORS OR OTHER COMMON ELEMENTS OR SHARED FACILITIES WITHOUT EXCLUDING AREAS THAT MAY BE OCCUPIED BY COLUMNS OR OTHER STRUCTURAL COMPONENTS). THE METHOD OF MEASUREMENT VARIES FROM PLACE TO PLACE. THE DIMENSIONS THAT FOLLOW ARE DETERMINED BY LONGEST DIMENSION AND THE CENTERLINE OF THE UNIT SET-FORTH IN THE DECLARATION, WHICH IS GENERALLY ONLY INCLUSIVE. THE INTERFERENCES BETWEEN THE INTERIOR WALLS AND EXTERIOR STRUCTURAL COMPONENTS, FOR EXAMPLE, THE AREA OF THE UNIT DETERMINED IN ACCORDANCE WITH THE UNIT DIMENSIONS SET-FORTH IN THE DECLARATION, ALL DIMENSIONS ARE APPROXIMATE AND MAY VARY WITH ACTUAL CONSTRUCTION. NOTE THAT MEASUREMENTS OF ROOMS SET-FORTH ON THIS FLOOR PLAN ARE GENERALLY TAKEN AT THE GREATEST POINTS OF EACH ROOM. ROOM AS SET-FORTH HEREIN ARE SUBJECT TO CHANGE WITHOUT NOTICE. THE AREA OF THE ACTUAL ROOM WILL TYPICALLY BE SMALLER THAN THE PRODUCT OBTAINED BY MULTIPLYING THE STATED LENGTH TIMES THE STATED WIDTH. THE AREA OF THE ACTUAL ROOM WILL TYPICALLY BE SMALLER THAN THE PRODUCT OBTAINED BY MULTIPLYING THE STATED LENGTH TIMES THE STATED WIDTH. THE RIGHT TO MAKE MODIFICATIONS, REVISIONS, AND CHANGES IS DEEMED DESIRABLE IN THE SOLE AND ABSOLUTE DISCRETION. ALL DEPICTIONS OF FIXTURES, APPLIANCES, BUILT-IN COUNTERTOPS, SOFFITS, FLOORCOVERINGS, LIGHTING, LANDSCAPING AND OTHER MATTERS OF DETAIL, INCLUDING, WITHOUT LIMITATION, ITEMS OF FINISH AND DECORATION, ARE CONCEPTUAL ONLY AND ARE NOT NECESSARILY INCLUDED IN EACH UNIT. CONSULT YOUR PROSPECTUS AND PURCHASE AGREEMENT.



**THE RITZ-CARLTON RESIDENCES**  
SOUTH BEACH

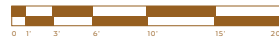
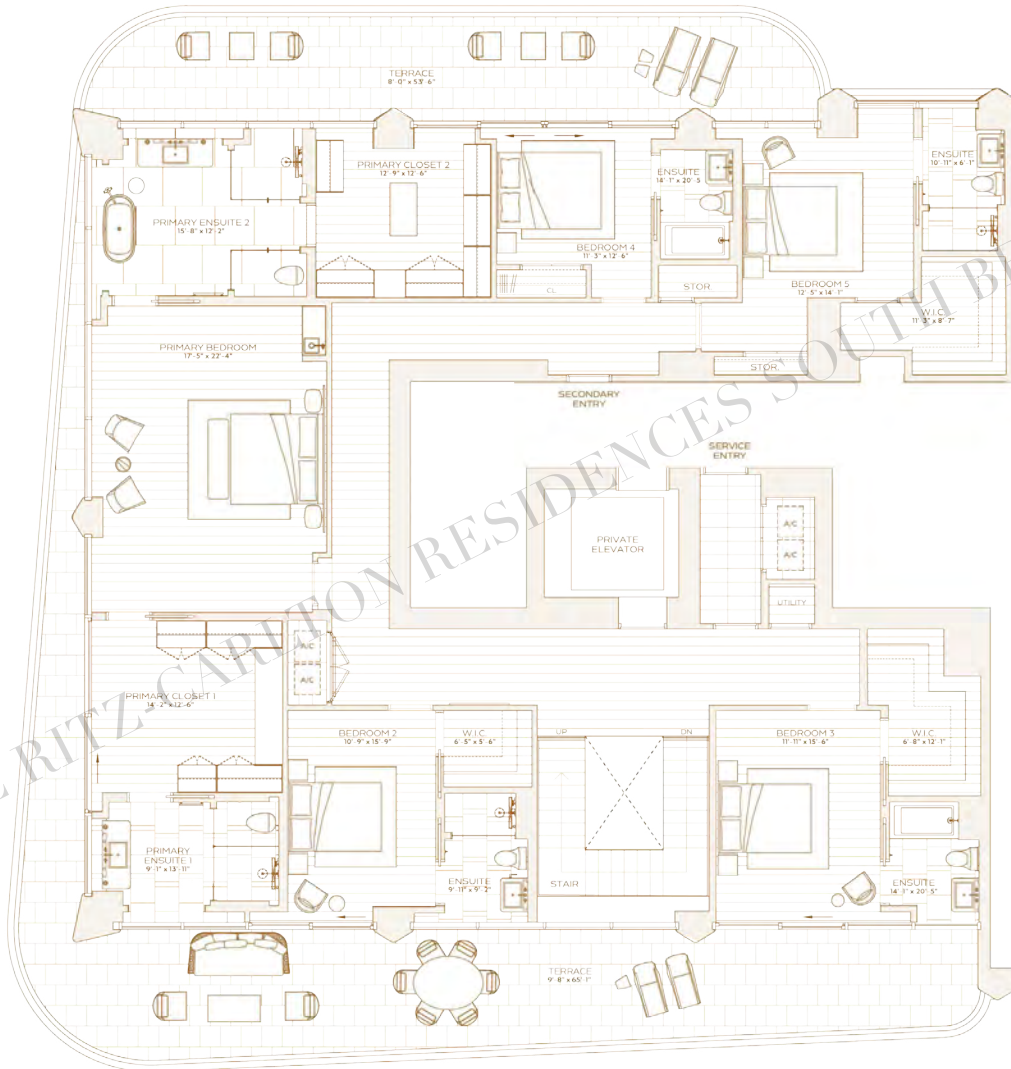
**PENTHOUSE B**  
LEVEL 18  
UPPER FLOOR

SIX BEDROOMS  
SEVEN BATHROOMS  
TWO POWDER ROOMS

**INTERIOR**  
6,534 SQ. FT. / 607 SQ. M

**EXTERIOR**  
4,977 SQ. FT. / 462 SQ. M

**TOTAL**  
11,511 SQ. FT. / 1,069 SQ. M



1671 COLLINS AVE.  
MIAMI BEACH, FL 33139

THE RITZ-CARLTON RESIDENCES SOUTH BEACH ARE NOT OWNED, DEVELOPED OR SOLD BY THE RITZ-CARLTON HOTEL COMPANY LLC OR ITS AFFILIATES ("RITZ-CARLTON"). SOME SKY DEVELOPMENT LLC USES THE RITZ-CARLTON MARKS UNDER LICENSE FROM RITZ-CARLTON, WHO HAS NOT CONFIRMED THE ACCURACY OF ANY OF THE STATEMENTS OR REPRESENTATIONS MADE HEREIN. STATION INTERIOR SQUARE FOOTAGE IS MEASURED TO THE EXTERIOR FACE OF EXTERIOR WALLS AND TO THE CENTERLINE OF INTERIOR DIVIDING WALLS (OR TO THE EXTERIOR FACE OF WALLS ADJOINING CORRIDORS OR OTHER COMMON ELEMENTS OR SHARED FACILITIES WITHOUT EXCLUDING AREAS THAT MAY BE OCCUPIED BY COLUMNS OR OTHER STRUCTURAL COMPONENTS). THE METHOD OF MEASUREMENT MAY BE DIFFERENT AND LARGER THAN THE DIMENSIONS THAT WOULD BE DETERMINED BY USING THE DESCRIPTION AND THE CENTERLINE OF THE UNIT SET FORTH IN THE DECLARATION, WHICH IS GENERALLY ONLY INCLUSIVE OF THE INTERIOR FINISHES AND DOES NOT INCLUDE STRUCTURAL COMPONENTS. THE AREA OF THE UNIT DETERMINED IN ACCORDANCE WITH THE UNIT BOUNDARIES SET FORTH IN EXHIBIT 5 TO THE DECLARATION. ALL DIMENSIONS ARE APPROXIMATE AND MAY VARY WITH ACTUAL CONSTRUCTION. NOTE THAT MEASUREMENTS OF ROOMS SET FORTH ON THIS FLOOR PLAN ARE GENERALLY TAKEN AT THE GREATEST POINTS OF EACH ROOM. ROOM AS SHOWN HEREIN ARE PERFECT RECTANGLES WITHOUT REGARD FOR ANY CURVED OR IRREGULARITIES. ACCORDING TO THE AREA OF THE ACTUAL ROOM WILL TYPICALLY BE SMALLER THAN THE PRODUCT OBTAINED BY ALL DIMENSIONS LISTED WITH THIS FLOOR PLAN. ALL FLOOR PLAN AND DEVELOPMENT PLANS ARE SUBJECT TO CHANGE. THE DEVELOPER EXPRESSLY RESERVES THE RIGHT TO MAKE MODIFICATIONS, REVISIONS AND CHANGES IN THE DESIGN AND ABSOLUTE DISCRETION. ALL DEPICTIONS OF FIXTURES, APPLIANCES, BUILT-IN COUNTERTOPS, SOFFITS, FLOORCOVERINGS, LIGHTING, LANDSCAPING AND OTHER MATTERS OF DETAIL, INCLUDING, WITHOUT LIMITATION, ITEMS OF FINISH AND DECORATION, ARE CONCEPTUAL ONLY AND ARE NOT NECESSARILY INCLUDED IN EACH UNIT. CONSULT YOUR PROSPECTUS AND PURCHASE AGREEMENT.

OCEAN

OCEAN





**THE RITZ-CARLTON RESIDENCES**  
SOUTH BEACH

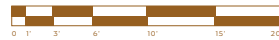
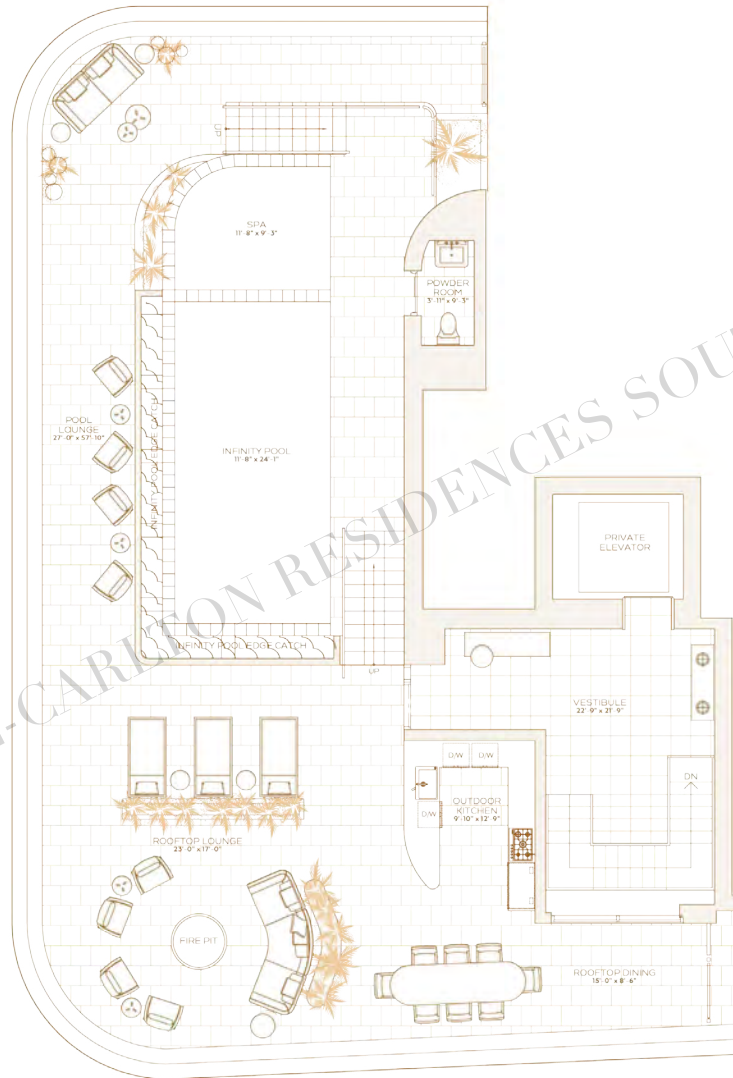
**PENTHOUSE B**  
LEVEL 19  
ROOFTOP

SIX BEDROOMS  
SEVEN BATHROOMS  
TWO POWDER ROOMS

**INTERIOR**  
6,534 SQ. FT / 607 SQ. M

**EXTERIOR**  
4,977 SQ. FT / 462 SQ. M

**TOTAL**  
11,511 SQ. FT / 1,069 SQ. M



1671 COLLINS AVE.  
MIAMI BEACH, FL 33139

THE RITZ-CARLTON RESIDENCES SOUTH BEACH ARE NOT OWNED, DEVELOPED OR SOLD BY THE RITZ-CARLTON HOTEL COMPANY LLC OR ITS AFFILIATES (THE "RITZ-CARLTON"). SOME DEVELOPMENT LLC(S) OF THE RITZ-CARLTON MARKS A LICENSE FROM THE RITZ-CARLTON, WHO HAS NOT CONFIRMED THE ACCURACY OF ANY OF THE STATEMENTS OR REPRESENTATIONS MADE HEREIN. STATION INTERIOR SQUARE FOOTAGE IS MEASURED TO THE EXTERIOR FACE OF EXTERIOR WALLS AND TO THE CENTERLINE OF INTERIOR PARTITION WALLS (OR TO THE EXTERIOR FACE OF WALLS ADJOINING CORRIDORS OR OTHER COMMON ELEMENTS OR SHARED FACILITIES WITHOUT EXCLUDING AREAS THAT MAY BE OCCUPIED BY COLUMNS OR OTHER STRUCTURAL COMPONENTS). THE METHOD OF MEASUREMENT VARIES FROM AND IS LARGER THAN THE DIMENSIONS WHICH WOULD BE DETERMINED BY LONG DEPENDENT AND THE CENTERLINE OF THE UNIT SET FORTH IN THE DECLARATION. ALL DIMENSIONS ARE APPROXIMATE AND MAY VARY WITH ACTUAL CONSTRUCTION. NOTE THAT MEASUREMENTS OF ROOMS SET FORTH ON THE FLOOR PLAN ARE GENERALLY TAKEN AT THE GREATEST POINTS OF EACH ROOM AS IF THE ROOM WERE A PERFECT RECTANGLE WITHOUT REGARD FOR ANY CURVED OR ANGLED FEATURES. ACCORDINGLY, THE AREA OF THE ACTUAL ROOM WILL TYPICALLY BE SMALLER THAN THE PRODUCT OBTAINED BY MULTIPLYING THE STATED LENGTH TIMES WIDTH. ALL FLOOR PLANS AND DEVELOPMENT PLANS ARE SUBJECT TO CHANGE. THE DEVELOPER EXPRESSLY RESERVES THE RIGHT TO MAKE MODIFICATIONS, REVISIONS, AND CHANGES (INCLUDING DESIRABLE ENIT'S SOLE AND ABSOLUTE DISCRETION) ALL DEPICTIONS OF FIXTURES, APPLIANCES, BUILT-IN COUNTERTOPS, SOFFITS, FLOORCOVERINGS, LIGHTING, LANDSCAPING AND OTHER MATTERS OF DETAIL, INCLUDING, WITHOUT LIMITATION, ITEMS OF FINISH AND DECORATION, ARE CONCEPTUAL ONLY AND ARE NOT NECESSARILY INCLUDED IN EACH UNIT. CONSULT YOUR PROSPECTUS AND PURCHASE AGREEMENT.



PROPERTY OF THE RITZ-CARLTON RESIDENCES SOUTH BEACH

OCEAN

OCEAN