

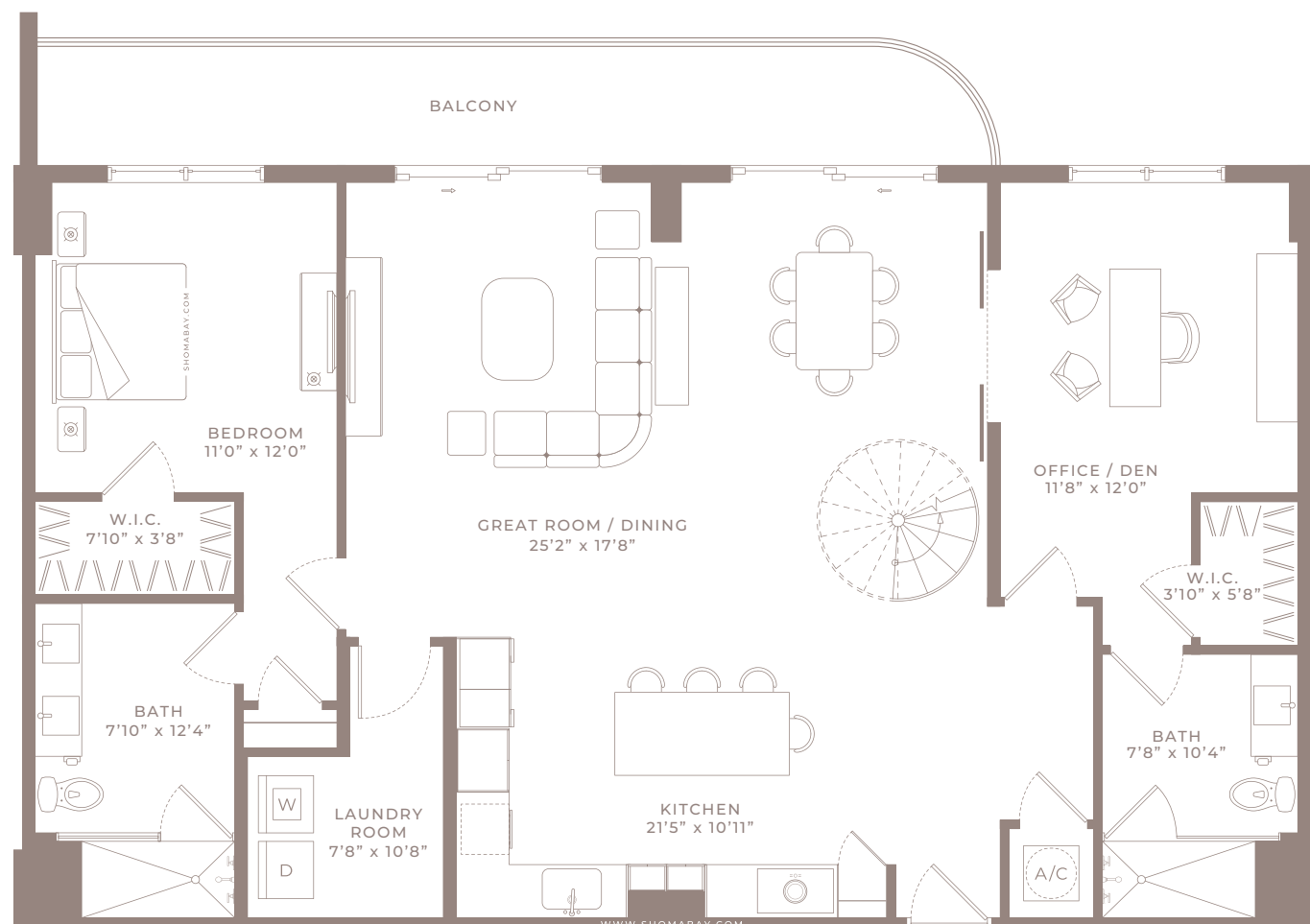
MODEL P8 - TYPE PH
 (3BED/3.5BTH)
 LEVEL 27

Internal Area	2,267 SQ.FT (210.6 m ²)
External Area	169 SQ.FT (15.7 m ²)
Total Area	2436 SQ.FT (226 m ²)

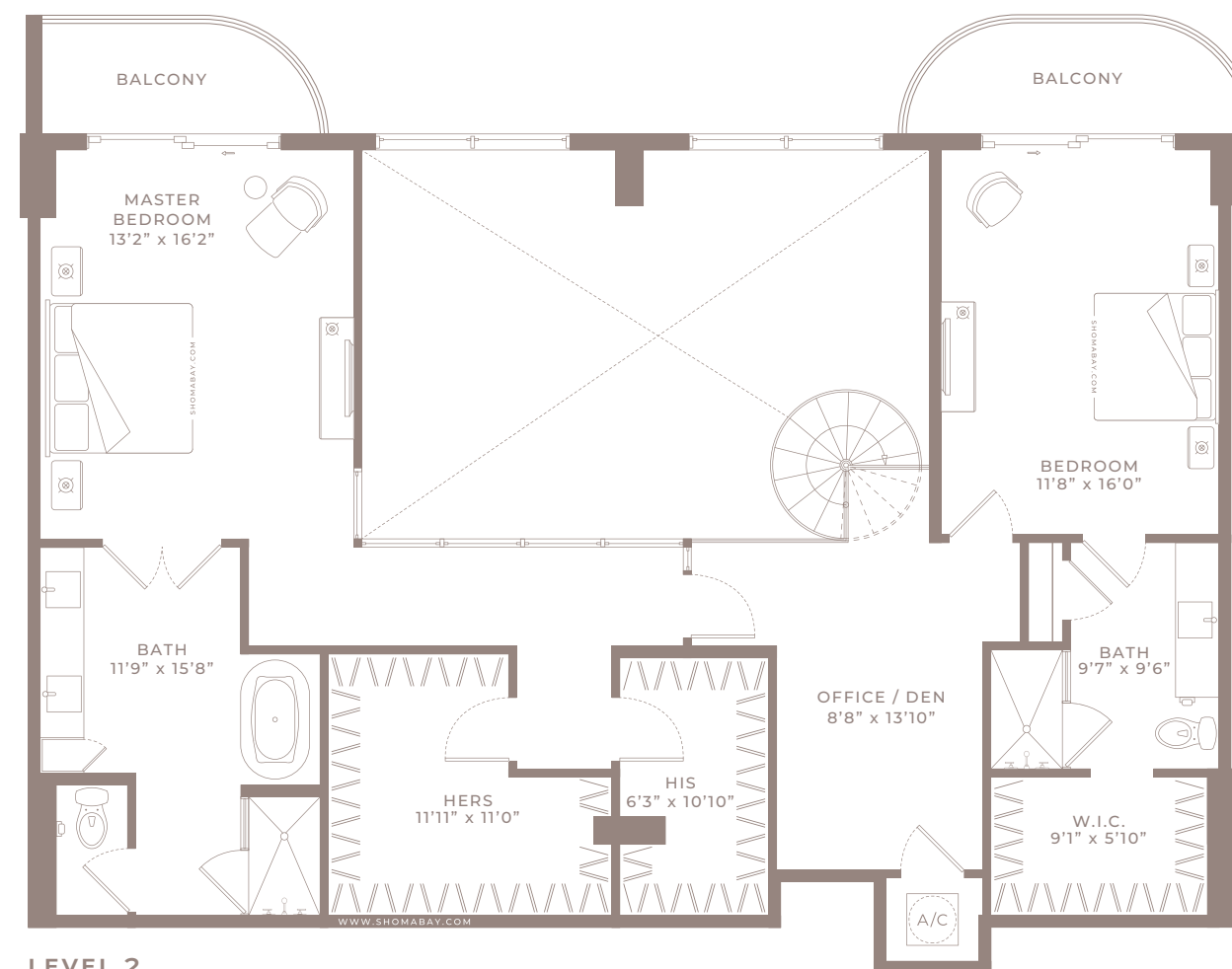


Any renderings and depictions are conceptual only and are for the convenience of reference. They should not be relied upon as representations, express or implied, of the final detail of the Units nor the views from any of the Units. ORAL REPRESENTATIONS CANNOT BE RELIED UPON AS CORRECTLY STATING REPRESENTATIONS OF THE DEVELOPER. FOR CORRECT REPRESENTATIONS, MAKE REFERENCE TO THIS BROCHURE AND TO THE DOCUMENTS REQUIRED BY 718.503, FLORIDA STATUTES, TO BE FURNISHED BY A DEVELOPER TO A BUYER OR LESSEE.





LEVEL 1



LEVEL 2

MODEL P7 - TYPE PH
 (3BED/DEN/OFFICE/4BTH)
 LEVEL 27

Internal Area	2,760 SQ.FT (256.4 m ²)
External Area	302 SQ.FT (28 m ²)
Total Area	3,062 SQ.FT (284 m²)



LEVEL 1



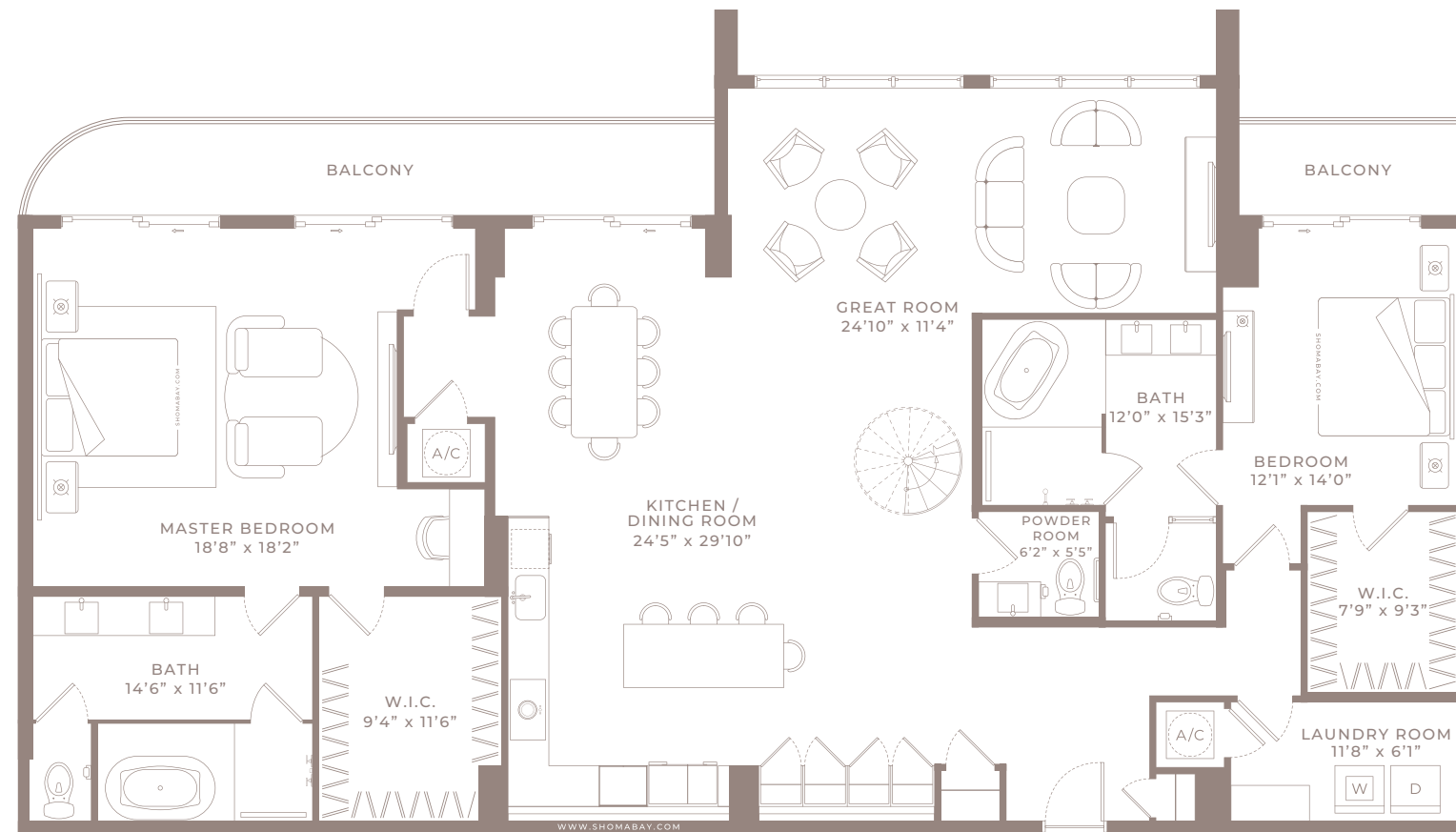
LEVEL 2



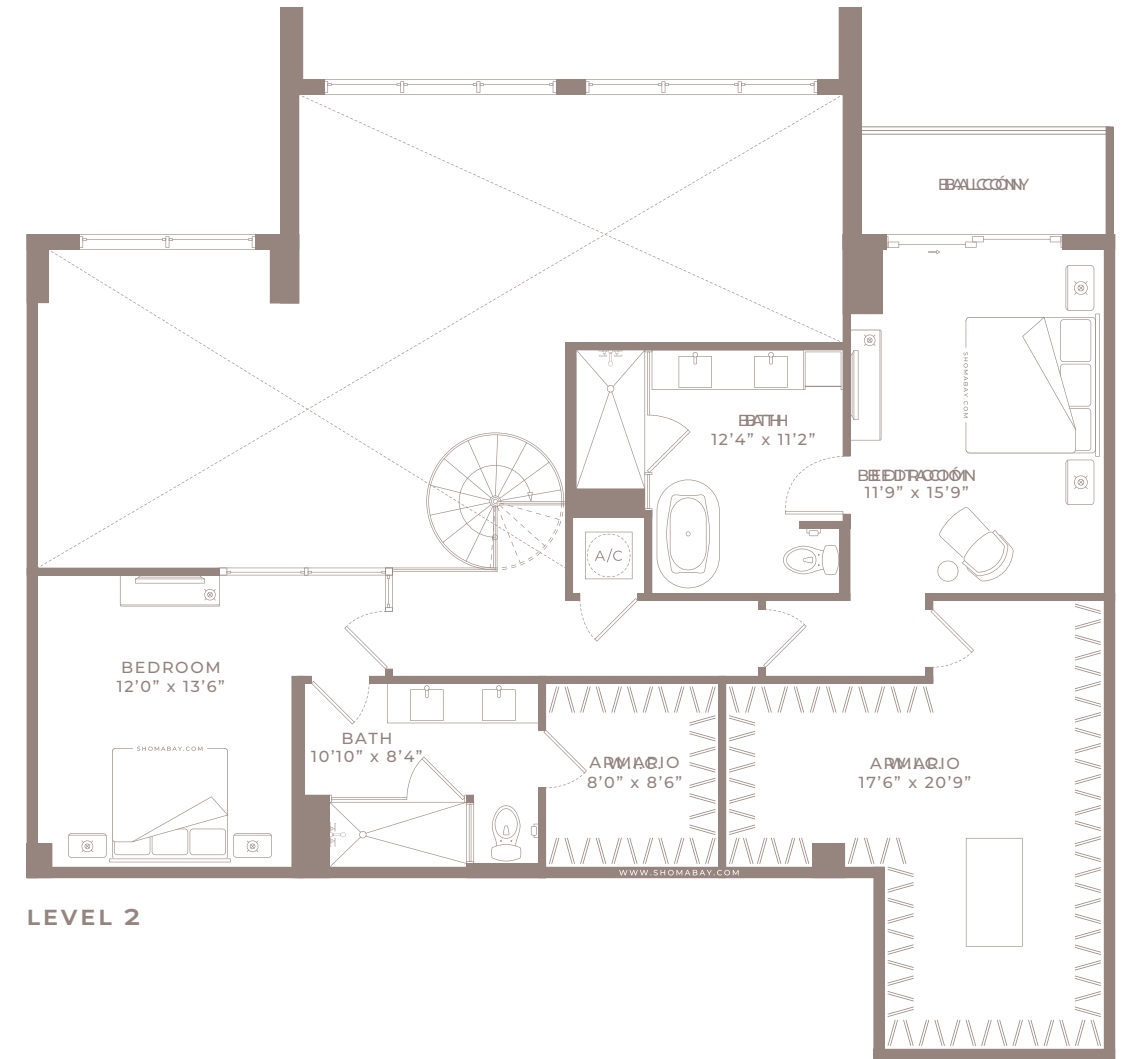
Any renderings and depictions are conceptual only and are for the convenience of reference. They should not be relied upon as representations, express or implied, of the final detail of the Units nor the views from any of the Units. ORAL REPRESENTATIONS CANNOT BE RELIED UPON AS CORRECTLY STATING REPRESENTATIONS OF THE DEVELOPER. FOR CORRECT REPRESENTATIONS, MAKE REFERENCE TO THIS BROCHURE AND TO THE DOCUMENTS REQUIRED BY 718.503, FLORIDA STATUTES, TO BE FURNISHED BY A DEVELOPER TO A BUYER OR LESSEE.



SHOMA



LEVEL 1

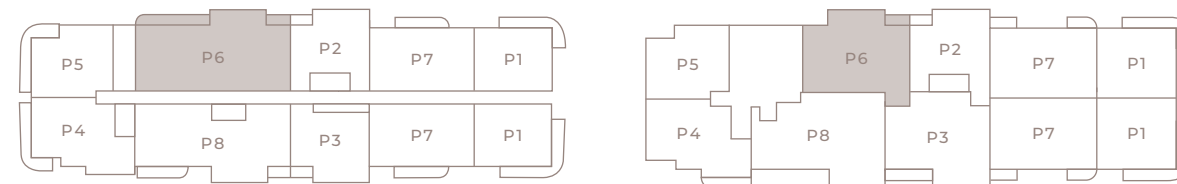


LEVEL 2

MODEL P6 - TYPE PH

(4BED/4.5BTH)

LEVEL 27



LEVEL 1

LEVEL 2

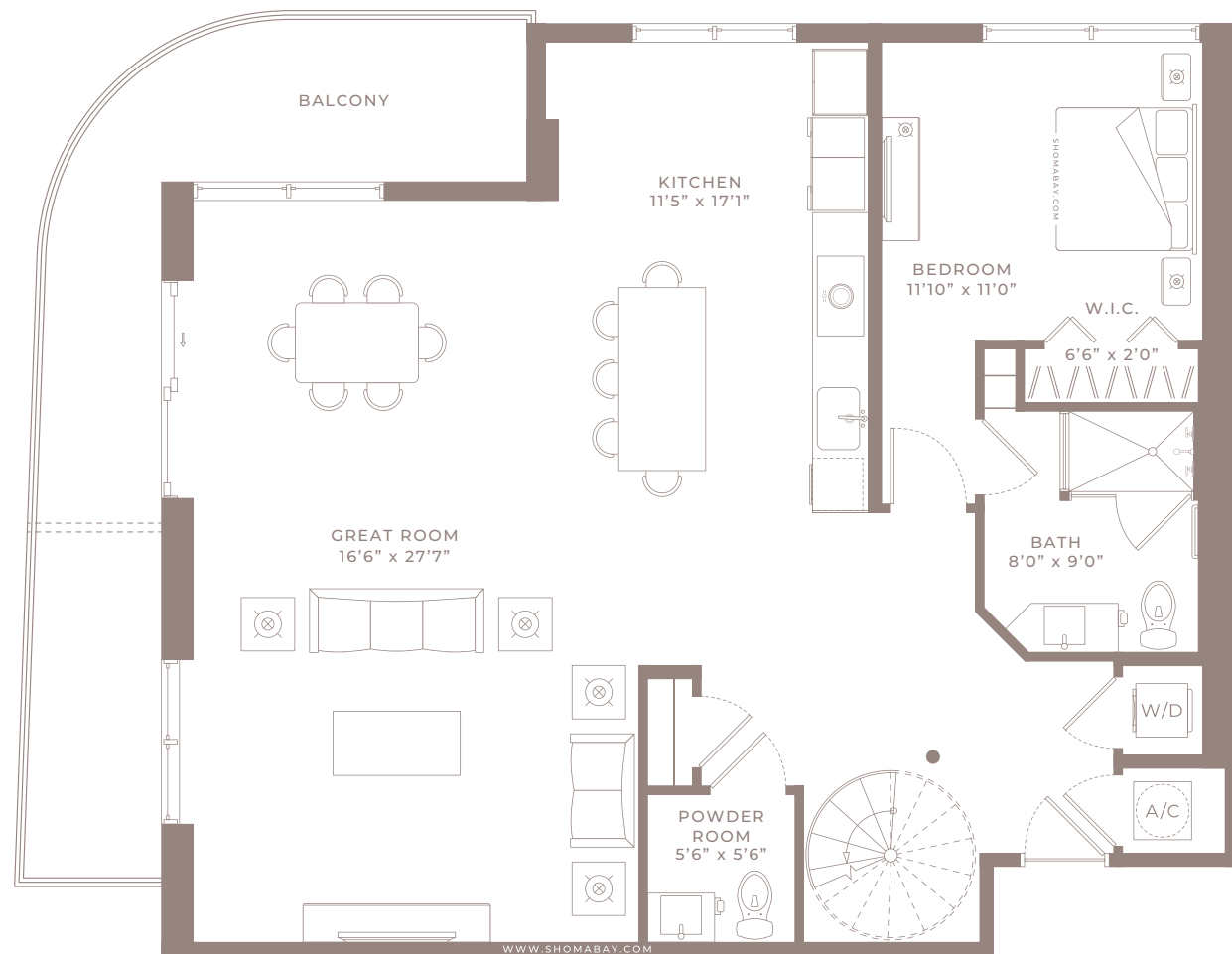
Internal Area	3,645 SQ.FT (338.6 m ²)
External Area	292 SQ.FT (27.1 m ²)
Total Area	3937 SQ.FT (366 m²)



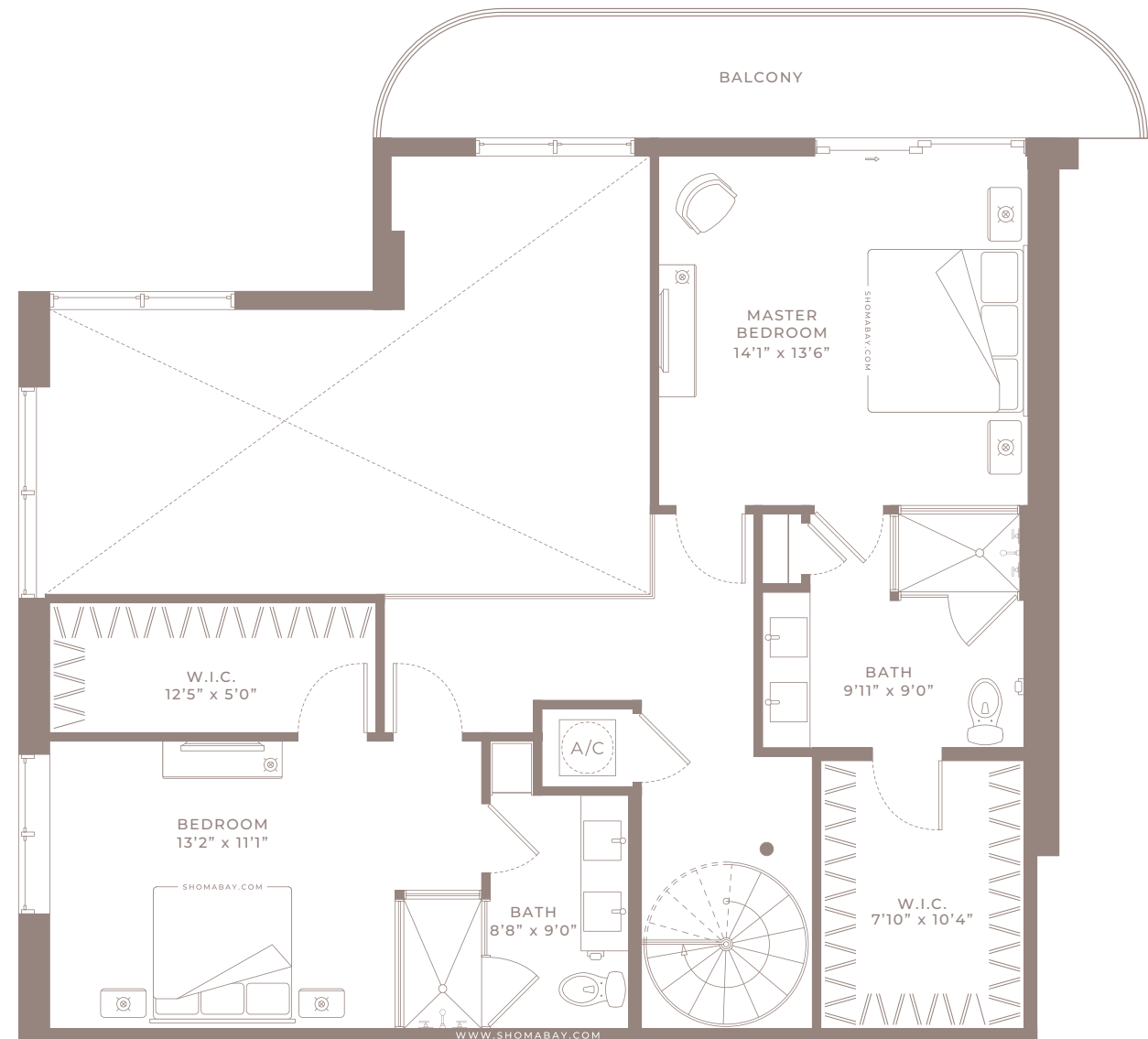
Any renderings and depictions are conceptual only and are for the convenience of reference. They should not be relied upon as representations, express or implied, of the final detail of the Units nor the views from any of the Units. ORAL REPRESENTATIONS CANNOT BE RELIED UPON AS CORRECTLY STATING REPRESENTATIONS OF THE DEVELOPER. FOR CORRECT REPRESENTATIONS, MAKE REFERENCE TO THIS BROCHURE AND TO THE DOCUMENTS REQUIRED BY 718.503, FLORIDA STATUTES, TO BE FURNISHED BY A DEVELOPER TO A BUYER OR LESSEE.



SHOMA



LEVEL 1



LEVEL 2

MODEL P5 - TYPE PH

(3BED/3.5BTH)

LEVEL 27



LEVEL 1



LEVEL 2

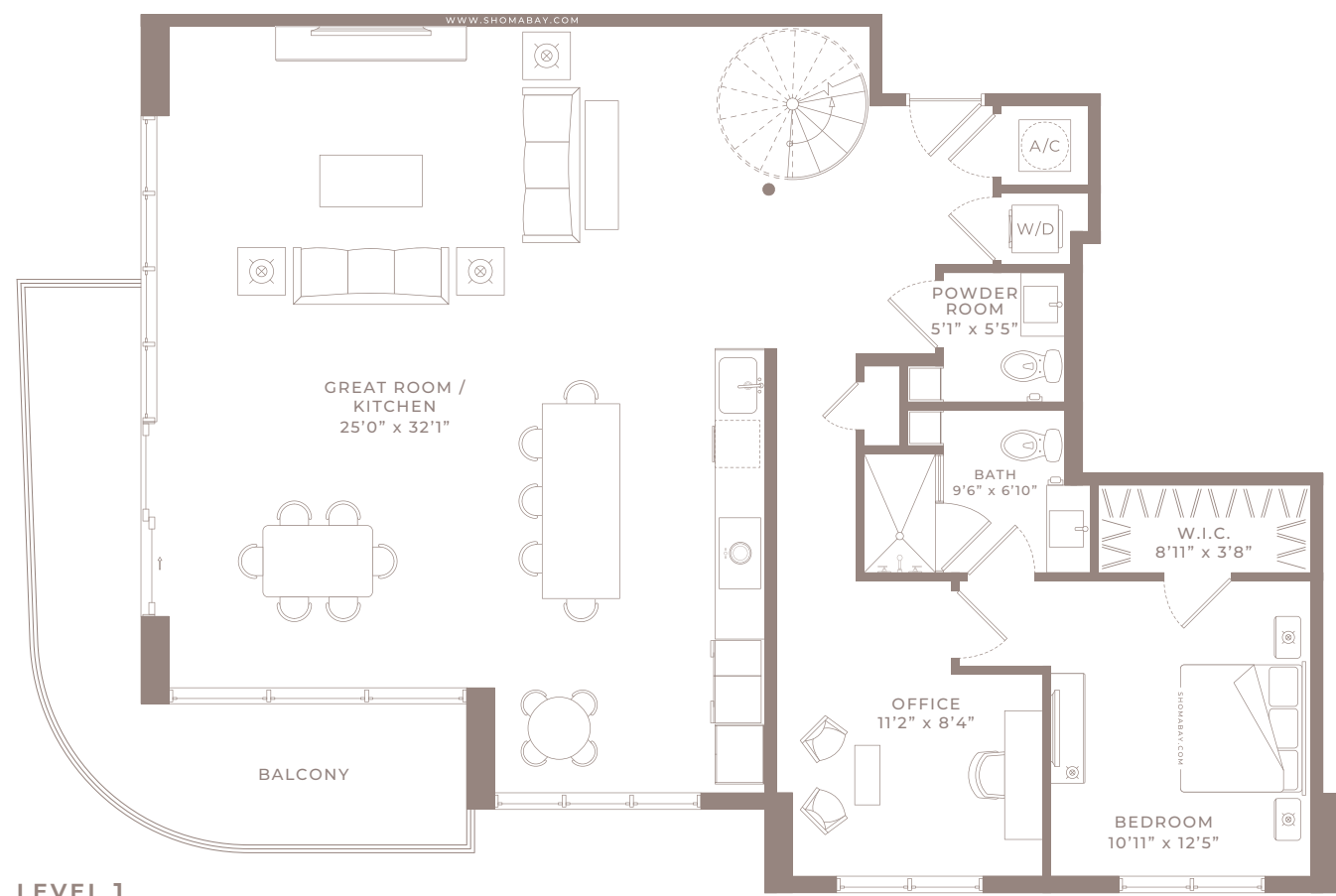
Internal Area	2,155 SQ.FT (200.2 m ²)
External Area	374 SQ.FT (34.7 m ²)
Total Area	2,529 SQ.FT (235 m ²)



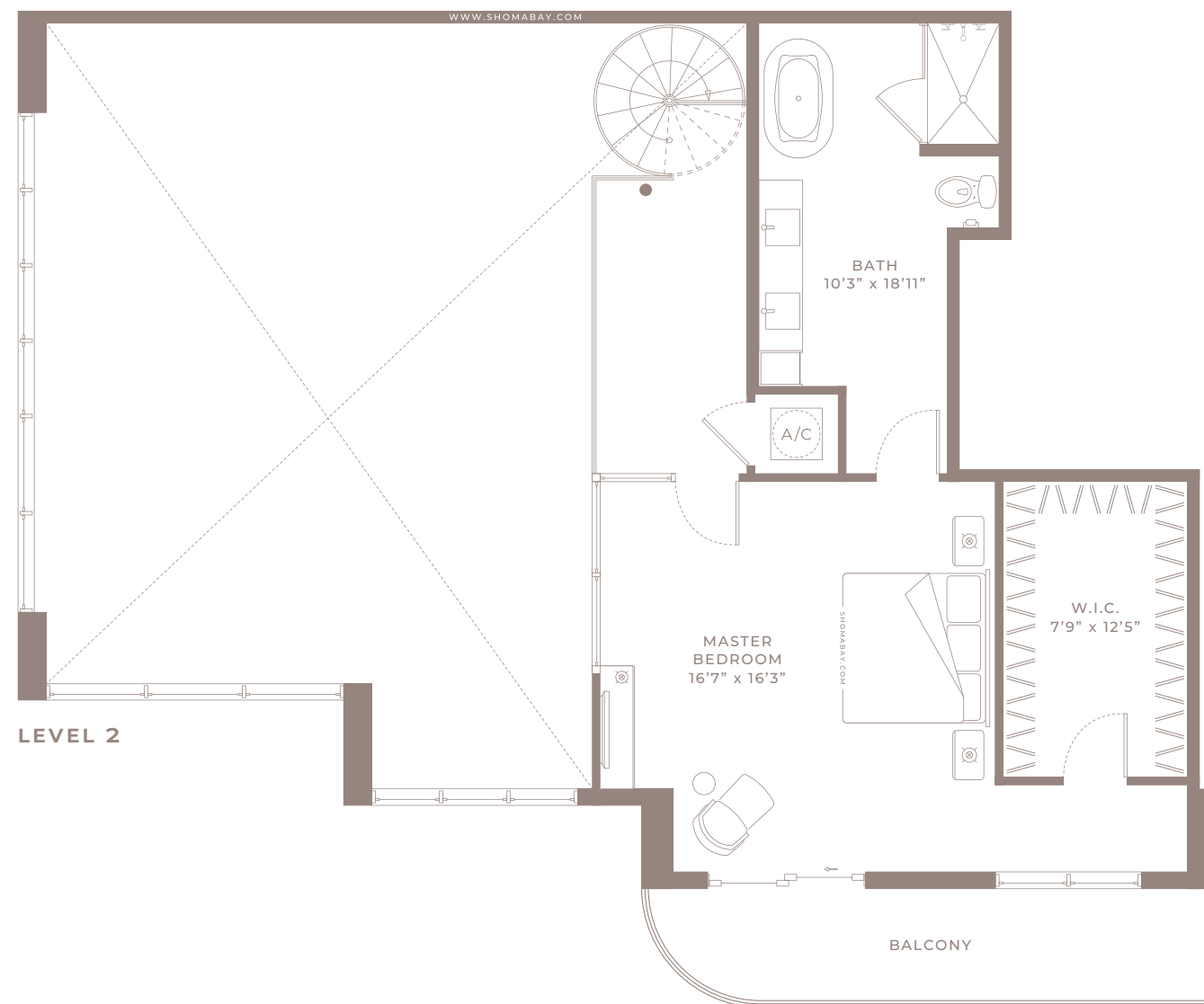
Any renderings and depictions are conceptual only and are for the convenience of reference. They should not be relied upon as representations, express or implied, of the final detail of the Units nor the views from any of the Units. ORAL REPRESENTATIONS CANNOT BE RELIED UPON AS CORRECTLY STATING REPRESENTATIONS OF THE DEVELOPER. FOR CORRECT REPRESENTATIONS, MAKE REFERENCE TO THIS BROCHURE AND TO THE DOCUMENTS REQUIRED BY 718.503, FLORIDA STATUTES, TO BE FURNISHED BY A DEVELOPER TO A BUYER OR LESSEE.



SHOMA



LEVEL 1



LEVEL 2

MODEL P4 - TYPE PH
 (2BED/DEN/2.5BTH)
 LEVEL 27

Internal Area	2,162 SQ.FT (200.8 m ²)
External Area	299 SQ.FT (27.8 m ²)
Total Area	2,461 SQ.FT (228.6 m²)



LEVEL 1



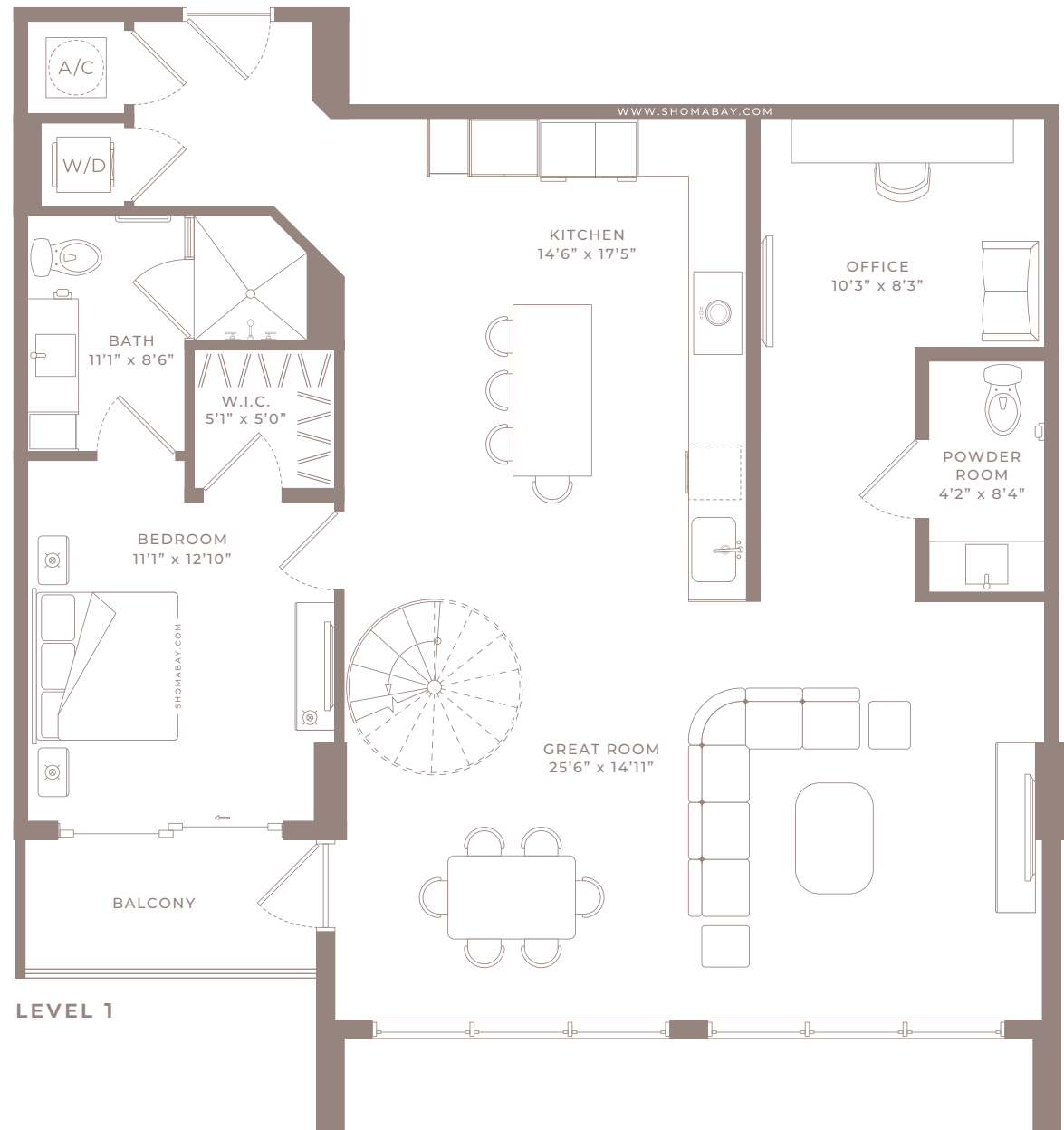
LEVEL 2



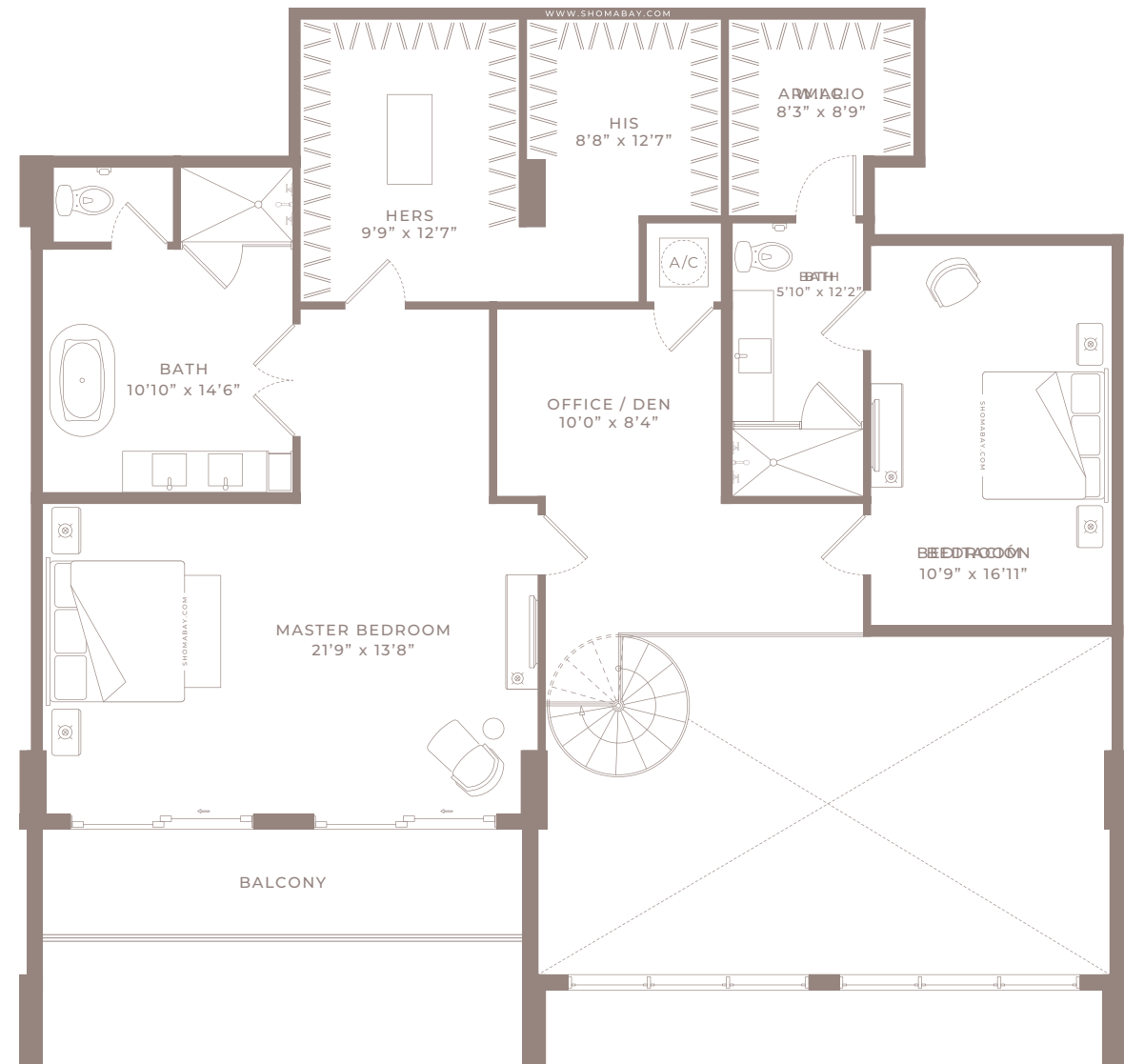
Any renderings and depictions are conceptual only and are for the convenience of reference. They should not be relied upon as representations, express or implied, of the final detail of the Units nor the views from any of the Units. ORAL REPRESENTATIONS CANNOT BE RELIED UPON AS CORRECTLY STATING REPRESENTATIONS OF THE DEVELOPER. FOR CORRECT REPRESENTATIONS, MAKE REFERENCE TO THIS BROCHURE AND TO THE DOCUMENTS REQUIRED BY 718.503, FLORIDA STATUTES, TO BE FURNISHED BY A DEVELOPER TO A BUYER OR LESSEE.



SHOMA



LEVEL 1



LEVEL 2

MODEL P3 - TYPE PH
(3BED/2 OFFICES/3.5BTH)

LEVEL 27



LEVEL 1



LEVEL 2

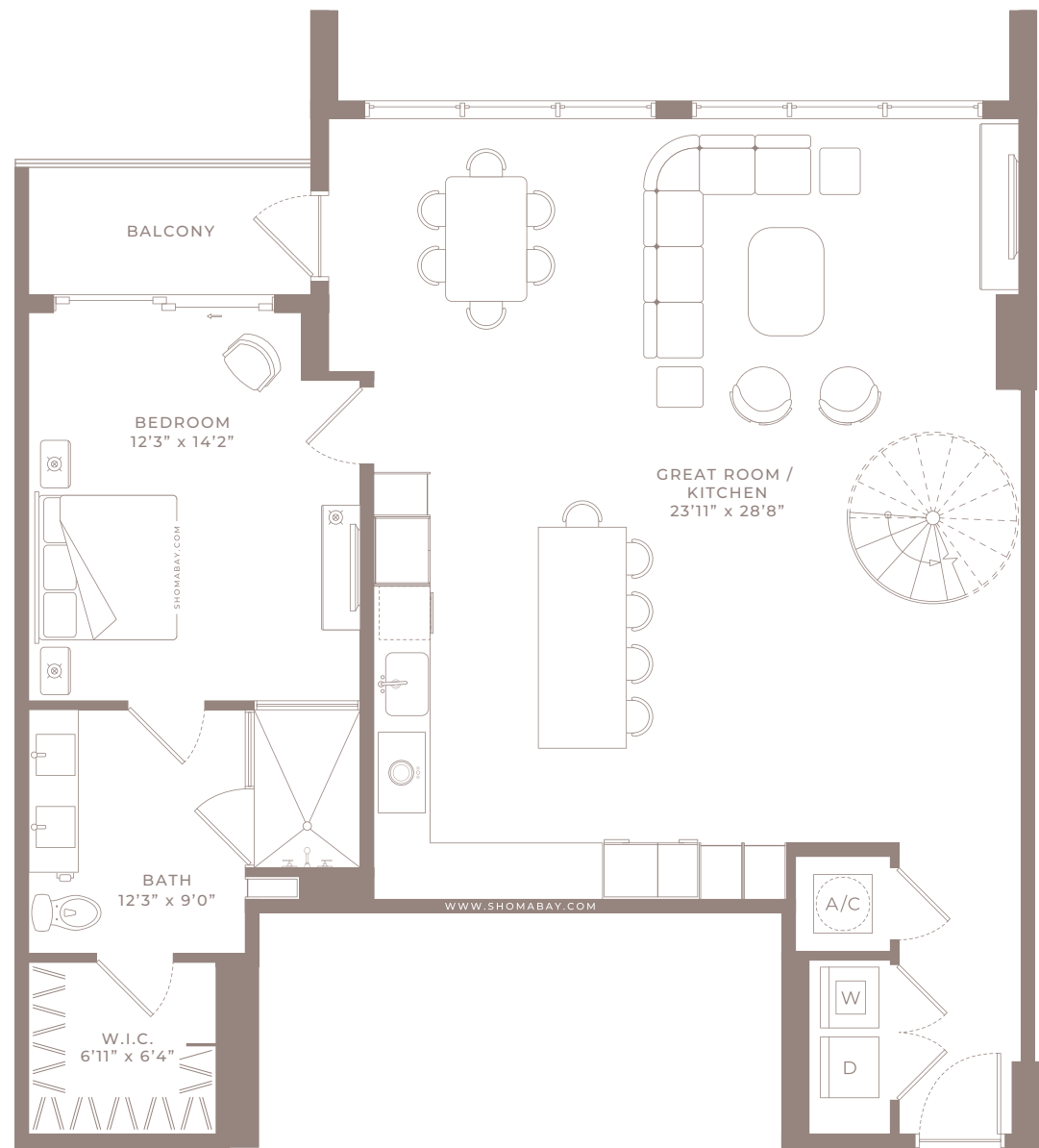
Internal Area	2,595 SQ.FT (241.1 m ²)
External Area	160 SQ.FT (14.8 m ²)
Total Area	2755 SQ.FT (256 m ²)



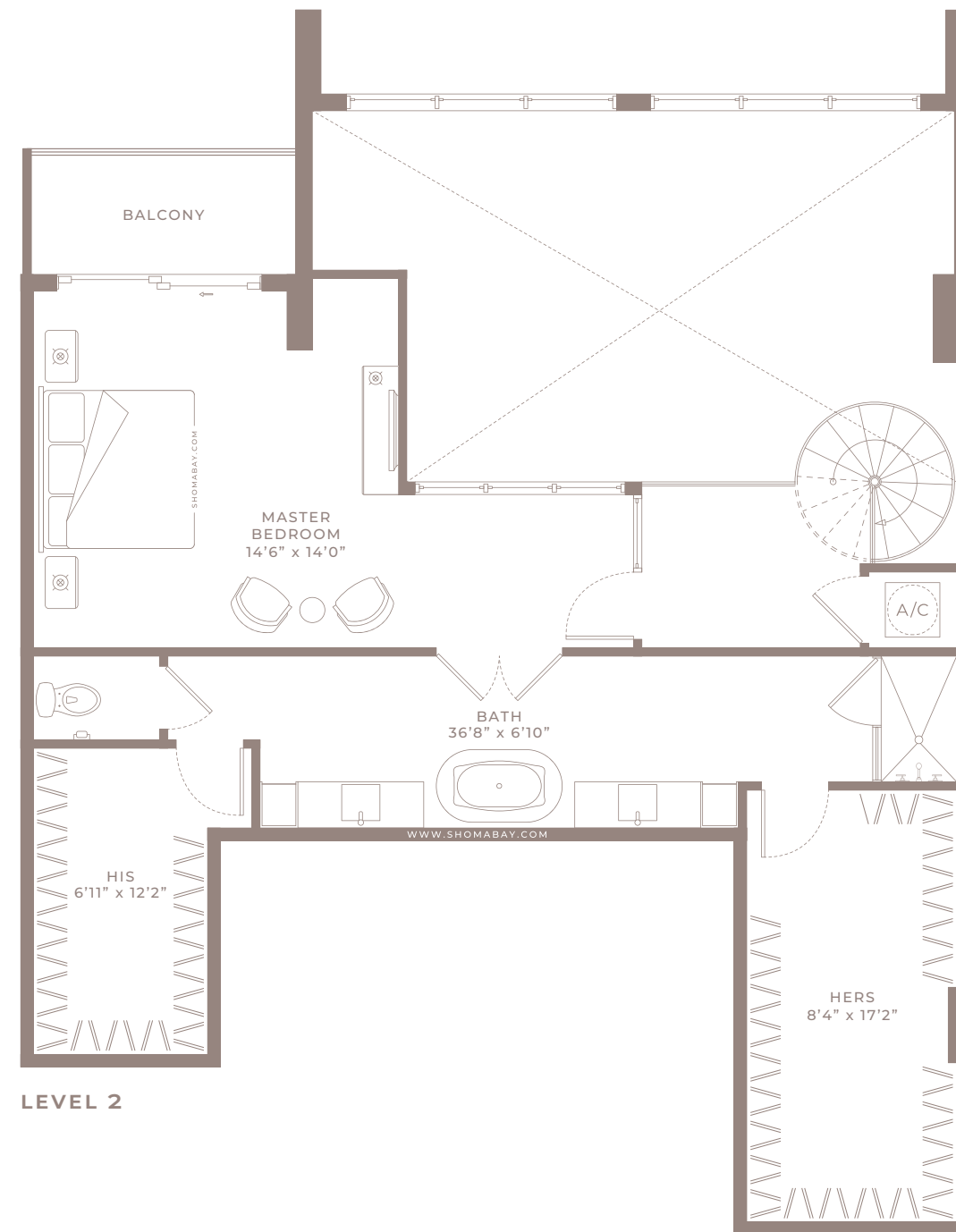
Any renderings and depictions are conceptual only and are for the convenience of reference. They should not be relied upon as representations, express or implied, of the final detail of the Units nor the views from any of the Units. ORAL REPRESENTATIONS CANNOT BE RELIED UPON AS CORRECTLY STATING REPRESENTATIONS OF THE DEVELOPER. FOR CORRECT REPRESENTATIONS, MAKE REFERENCE TO THIS BROCHURE AND TO THE DOCUMENTS REQUIRED BY 718.503, FLORIDA STATUTES, TO BE FURNISHED BY A DEVELOPER TO A BUYER OR LESSEE.



SHOMA



LEVEL 1



LEVEL 2

MODEL P2 - TYPE PH (2BED/2BTH)

LEVEL 27



LEVEL 1



LEVEL 2

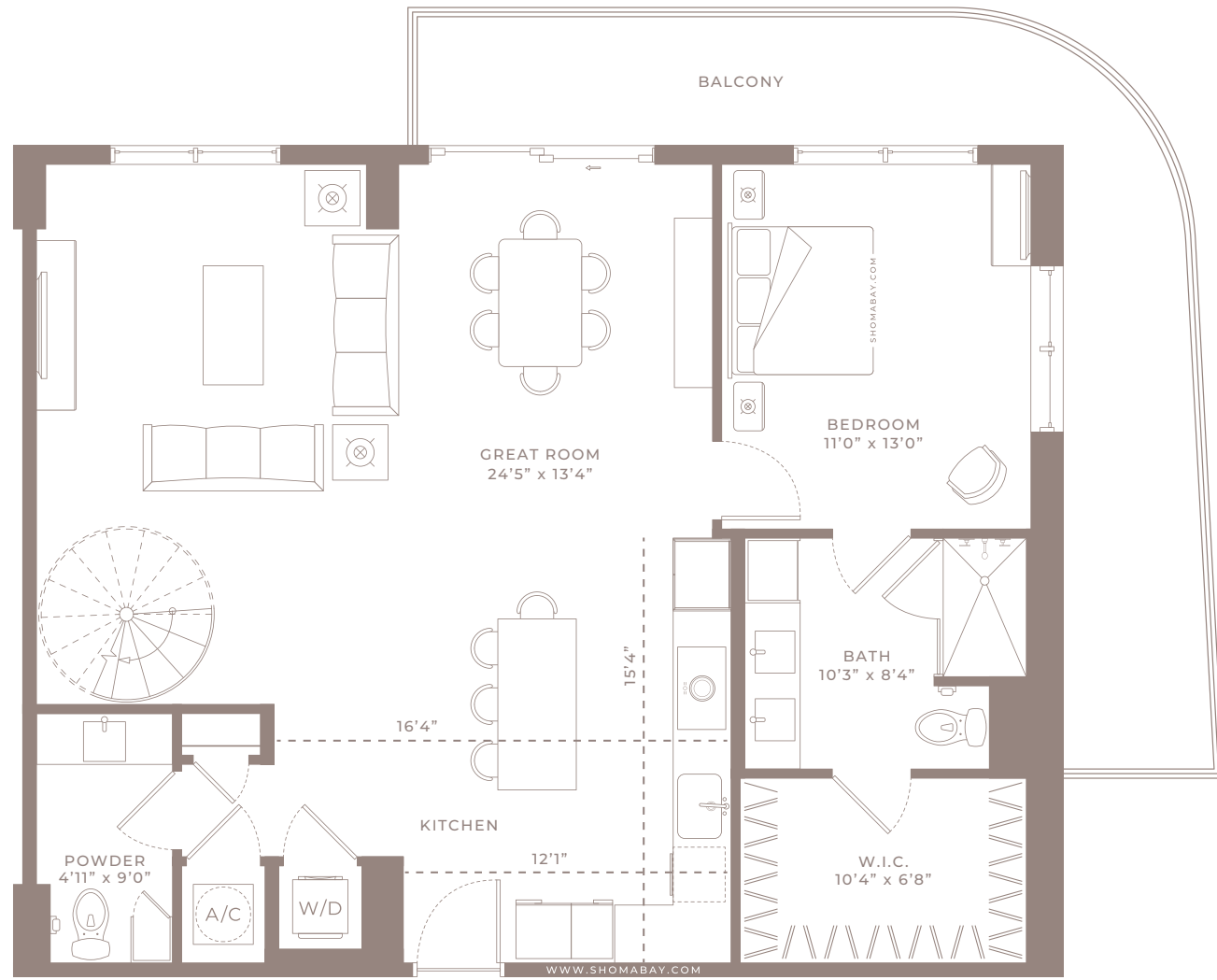
Internal Area	2,053 SQ.FT (190.7 m ²)
External Area	106 SQ.FT (9.8 m ²)
Total Area	2159 SQ.FT (201 m²)



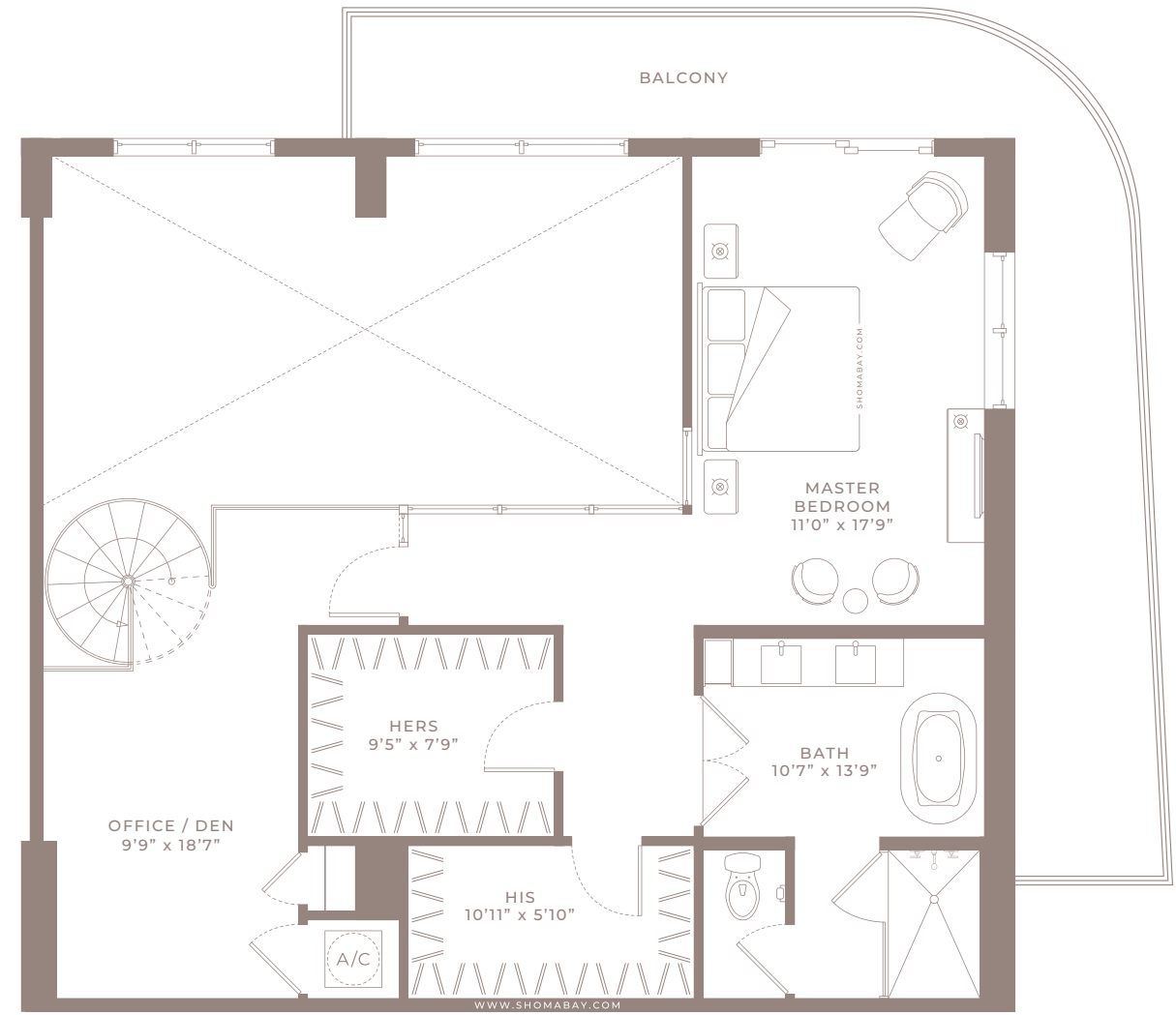
Any renderings and depictions are conceptual only and are for the convenience of reference. They should not be relied upon as representations, express or implied, of the final detail of the Units nor the views from any of the Units. ORAL REPRESENTATIONS CANNOT BE RELIED UPON AS CORRECTLY STATING REPRESENTATIONS OF THE DEVELOPER. FOR CORRECT REPRESENTATIONS, MAKE REFERENCE TO THIS BROCHURE AND TO THE DOCUMENTS REQUIRED BY 718.503, FLORIDA STATUTES, TO BE FURNISHED BY A DEVELOPER TO A BUYER OR LESSEE.



SHOMA



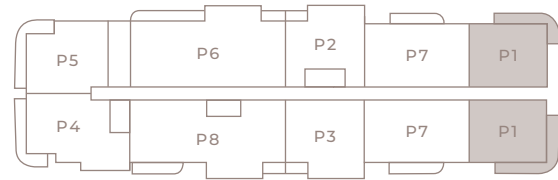
LEVEL 1



LEVEL 2

MODEL P1 - TYPE PH
 (2BED/DEN/2.5BTH)
 LEVEL 27

Internal Area	1,979 SQ.FT (183.9 m ²)
External Area	528 SQ.FT (49.1 m ²)
Total Area	2507 SQ.FT (233 m ²)



LEVEL 1



LEVEL 2



Any renderings and depictions are conceptual only and are for the convenience of reference. They should not be relied upon as representations, express or implied, of the final detail of the Units nor the views from any of the Units. ORAL REPRESENTATIONS CANNOT BE RELIED UPON AS CORRECTLY STATING REPRESENTATIONS OF THE DEVELOPER. FOR CORRECT REPRESENTATIONS, MAKE REFERENCE TO THIS BROCHURE AND TO THE DOCUMENTS REQUIRED BY 718.503, FLORIDA STATUTES, TO BE FURNISHED BY A DEVELOPER TO A BUYER OR LESSEE.

