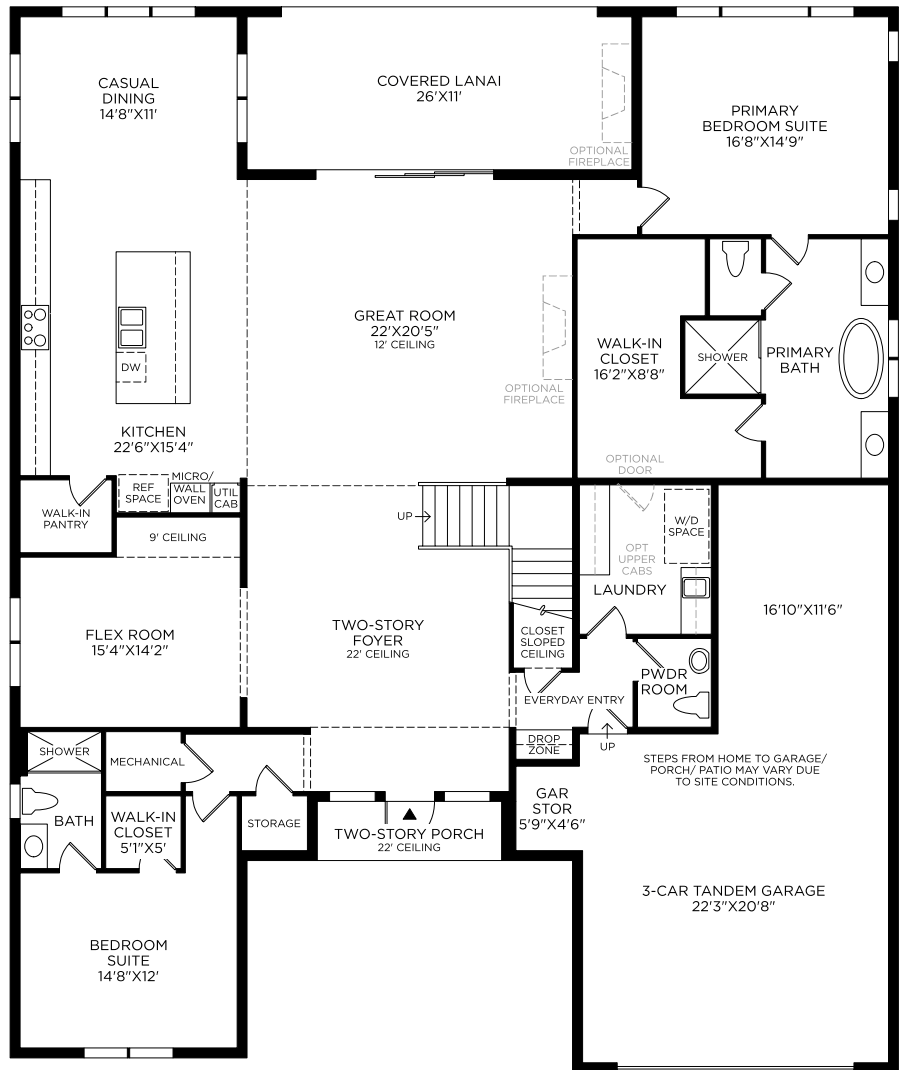


# Toll Brothers

## Cape

First Floor



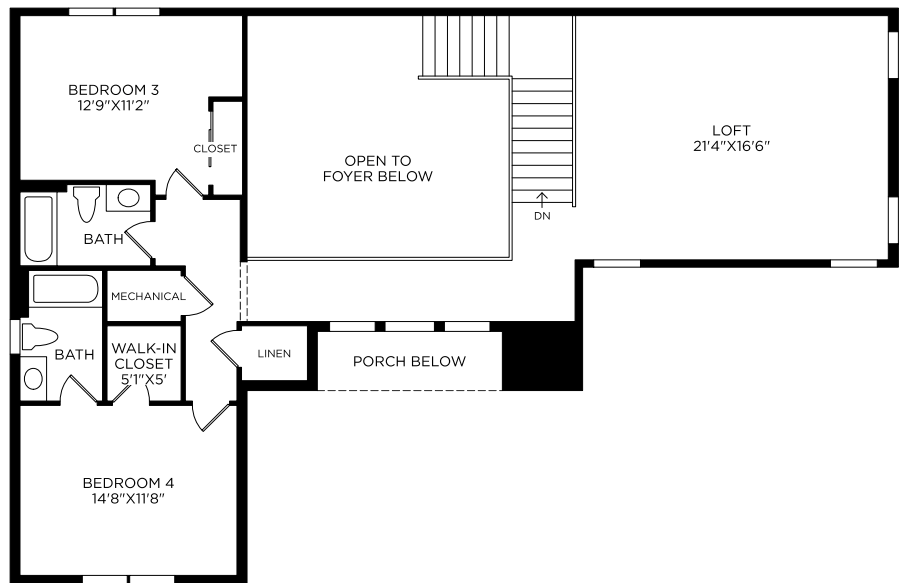
No Options Selected

These renderings are intended for illustrative purposes only. Images are copyrighted and may not be distributed, modified or reproduced without prior written permission. Information is provided "as is", without warranty, either express or implied, including, but not limited to, the implied warranties of merchantability, fitness for a particular purpose, or non-infringement. Access and use of the images and affiliated products or links are subject to all applicable laws relating to the use of web-based information, copyrighted materials and intellectual property. Site plans, floorplans, community maps, photos and/or computer-generated renderings have been provided for illustrative purposes, are conceptual in nature, and are merely an artist's rendition of actual products intended for example only. These renderings may not accurately represent the condition, size or design of the actual items being represented. Revision: 12/9/2024

# Toll Brothers

## Cape

Second Floor



## No Options Selected

These renderings are intended for illustrative purposes only. Images are copyrighted and may not be distributed, modified or reproduced without prior written permission. Information is provided "as is", without warranty, either express or implied, including, but not limited to, the implied warranties of merchantability, fitness for a particular purpose, or non-infringement. Access and use of the images and affiliated products or links are subject to all applicable laws relating to the use of web-based information, copyrighted materials and intellectual property. Site plans, floorplans, community maps, photos and/or computer-generated renderings have been provided for illustrative purposes, are conceptual in nature, and are merely an artist's rendition of actual products intended for example only. These renderings may not accurately represent the condition, size or design of the actual items being represented. Revision: 12/9/2024