



# RESIDENCE 02

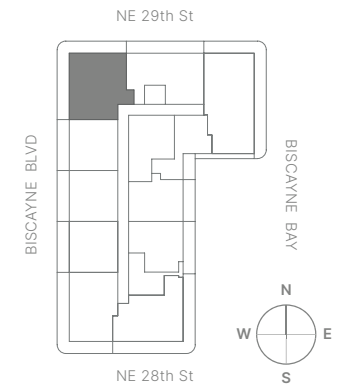
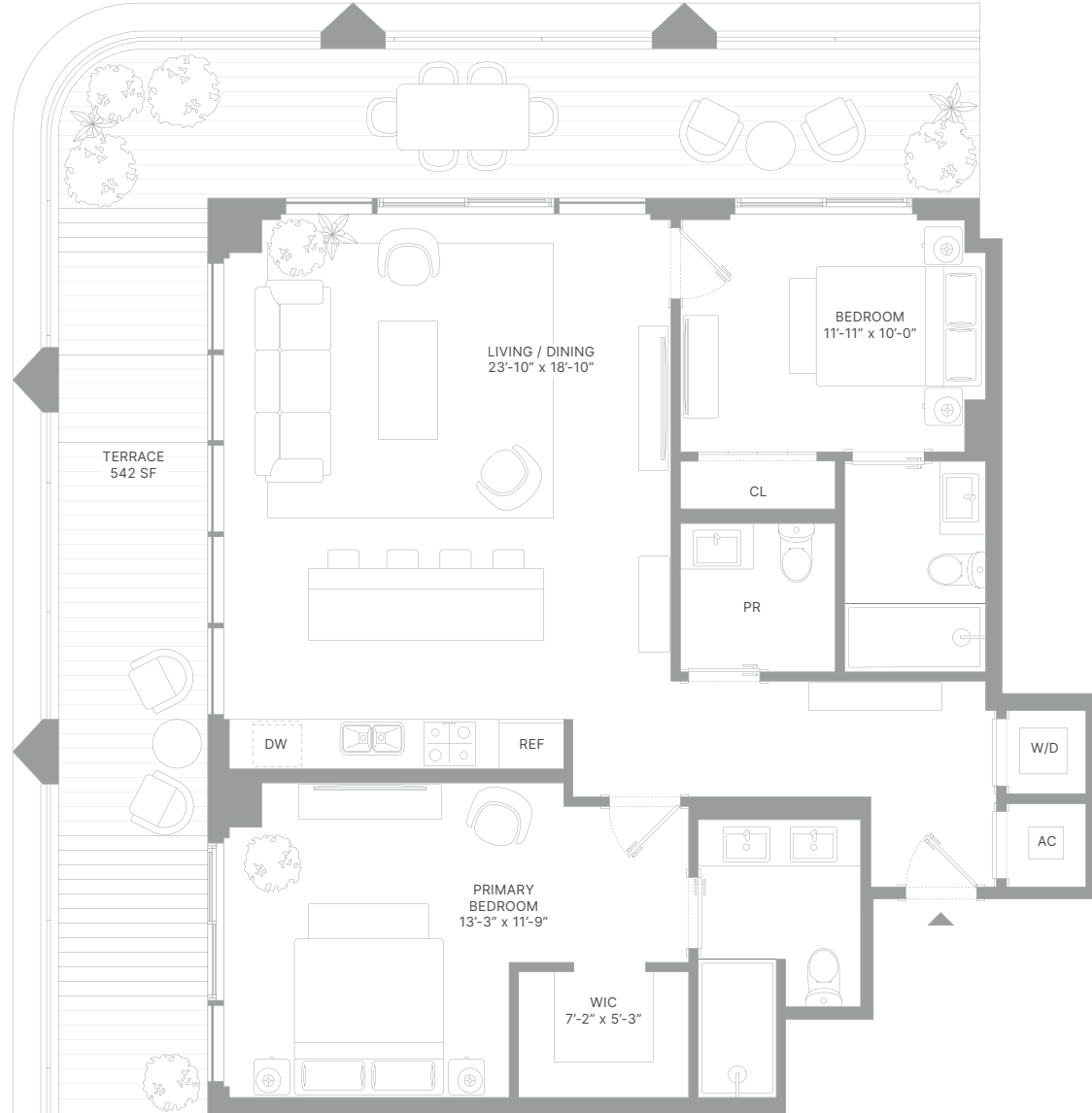
LEVEL 12 - 32

**2** Bedrooms | **2.5** Bathrooms

Interior 1,246 SF / 115.75 m<sup>2</sup>

Terrace 542 SF / 50.35 m<sup>2</sup>

**Total 1,788 SF / 166.11 m<sup>2</sup>**



430 NE 29TH STREET, MIAMI, FL 33137

DISCLAIMER: REPRESENTATIONS CANNOT BE RELIED UPON AS CORRECTLY STATING THE REPRESENTATIONS OF THE DEVELOPER, SSC EDGEWATER OWNER, LLC. FOR CORRECT REPRESENTATIONS, REFERENCE SHOULD BE MADE TO THE DOCUMENTS REQUIRED BY SECTION 7E.04, FLORIDA STATUTES, TO BE FURNISHED BY A DEVELOPER TO A BUYER OR LESSEE. THIS OFFERING IS MADE ONLY BY THE OFFERING DOCUMENTS FOR THE CONDOMINIUM AND NO STATEMENT SHOULD BE RELIED UPON IF NOT MADE IN THE OFFERING DOCUMENTS. THIS IS NOT AN OFFER TO SELL OR SOLICITATION OF OFFERS TO BUY. THE CONDOMINIUM UNITS IN STATES WHERE SUCH OFFER OR SOLICITATION CANNOT BE MADE, PRICES, PLANS AND SPECIFICATIONS ARE SUBJECT TO CHANGE WITHOUT NOTICE. WE ARE PLEDGED TO THE LETTER AND SPIRIT OF THE U.S. POLICY FOR ACHIEVEMENT OF EQUAL HOUSING OPPORTUNITY THROUGHOUT THE NATION. WE ENCOURAGE AND SUPPORT AN AFFIRMATIVE ADVERTISING AND MARKETING PROGRAM IN WHICH THERE ARE NO BARRIERS TO OBTAINING HOUSING BECAUSE OF RACE, COLOR, RELIGION, SEX, HANDICAP, FAMILY STATUS OR NATIONAL ORIGIN. (b) The project graphics, renderings and text provided herein are copyrighted works owned by the developer. © 2025, SSC EDGEWATER OWNER, LLC. All rights reserved. Unauthorized reproduction, display or other dissemination of such materials is strictly prohibited and constitutes copyright infringement. There are various recognized methods for calculating the square footage of a unit. The square footage and dimensions stated herein are measured to the exterior boundaries of the exterior walls and the centerline of interior dividing walls and in fact vary from the dimensions that would be determined by using the description and definition of the "unit" set forth in the Declaration (which generally only includes the interior spaces between the perimeter walls and excludes interior structural components). For your reference, the area of the unit, determined in accordance with those defined unit boundaries, is set forth in the Declaration. Note that measurements of areas set forth on this floor plan are generally taken at the greatest points of each given room, even if the room were a perfect rectangle, without regard for any columns. Accordingly, the area of the actual room will typically be smaller than the product obtained by multiplying the stated length times width. The dimensions and square footage stated for this Unit floor plan are approximate and may vary with actual construction, and all floor plans and development plans are subject to change. All depictions of furnishings, appliances, built-ins, counters, soffits, floor coverings, lighting and other matters of detail, including, without limitation, items of finish and decoration, are conceptual only and are not necessarily included in each unit. Consult the Developer's prospectus for information on what is offered with the Unit.

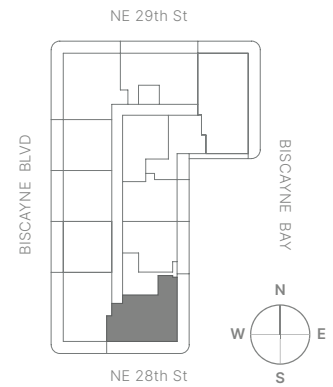


# RESIDENCE 09

LEVEL 12 - 32

**2** Bedrooms | **2.5** Bathrooms

Interior 1,165 SF / 108.23 m<sup>2</sup>  
 Terrace 596 SF / 55.37 m<sup>2</sup>  
**Total 1,761 SF / 163.60 m<sup>2</sup>**



430 NE 29TH STREET, MIAMI, FL 33137

DISCLAIMER: REPRESENTATIONS CANNOT BE RELIED UPON AS CORRECTLY STATING THE REPRESENTATIONS OF THE DEVELOPER, SSC EDGEWATER OWNER, LLC. FOR CORRECT REPRESENTATIONS, REFERENCE SHOULD BE MADE TO THE DOCUMENTS REQUIRED BY SECTION 7E.04, FLORIDA STATUTES, TO BE FURNISHED BY A DEVELOPER TO A BUYER OR LESSEE. THIS OFFERING IS MADE ONLY BY THE OFFERING DOCUMENTS FOR THE CONDOMINIUM AND NO STATEMENT SHOULD BE RELIED UPON IF NOT MADE IN THE OFFERING DOCUMENTS. THIS IS NOT AN OFFER TO SELL OR SOLICITATION OF OFFERS TO BUY. THE CONDOMINIUM UNITS IN STATES WHERE SUCH OFFER OR SOLICITATION CANNOT BE MADE. PRICES, PLANS AND SPECIFICATIONS ARE SUBJECT TO CHANGE WITHOUT NOTICE. WE ARE PLEDGED TO THE LETTER AND SPIRIT OF THE U.S. POLICY FOR ACHIEVEMENT OF EQUAL HOUSING OPPORTUNITY THROUGHOUT THE NATION. WE ENCOURAGE AND SUPPORT AN AFFIRMATIVE ADVERTISING AND MARKETING PROGRAM IN WHICH THERE ARE NO BARRIERS TO OBTAINING HOUSING BECAUSE OF RACE, COLOR, RELIGION, SEX, HANDICAP, FAMILIAL STATUS OR NATIONAL ORIGIN. (b) The project graphics, renderings and text provided herein are copyrighted works owned by the developer. © 2025, SSC EDGEWATER OWNER, LLC. All rights reserved. Unauthorized reproduction, display or other dissemination of such materials is strictly prohibited and constitutes copyright infringement. There are various recognized methods for calculating the square footage of a unit. The square footage and dimensions stated herein are measured to the exterior boundaries of the exterior walls and the centerline of interior opening walls and in fact vary from the dimensions that would be determined by using the description and definition of the "unit" set forth in the Declaration (which generally only includes the interior air space between the perimeter walls and excludes interior structural components). For your reference, the area of the unit, determined in accordance with those defined unit boundaries, is set forth in the Declaration. Note that measurements of areas set forth on this floor plan are generally taken at the greatest points of each given room, even if the room were a perfect rectangle, without regard for any alcove. Accordingly, the area of the actual room will typically be smaller than the product obtained by multiplying the stated length times width. The dimensions and square footage stated for this unit floor plan are approximate and may vary with actual construction, and all floor plans and development plans are subject to change. All depictions of furnishings, appliances, built-ins, counters, soffits, floor coverings, lighting and other matters of detail, including, without limitation, items of finish and decoration, are conceptual only and are not necessarily included in each unit. Consult the Developer's prospectus for information on what is offered with the unit.

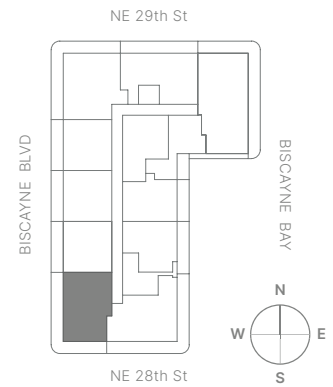
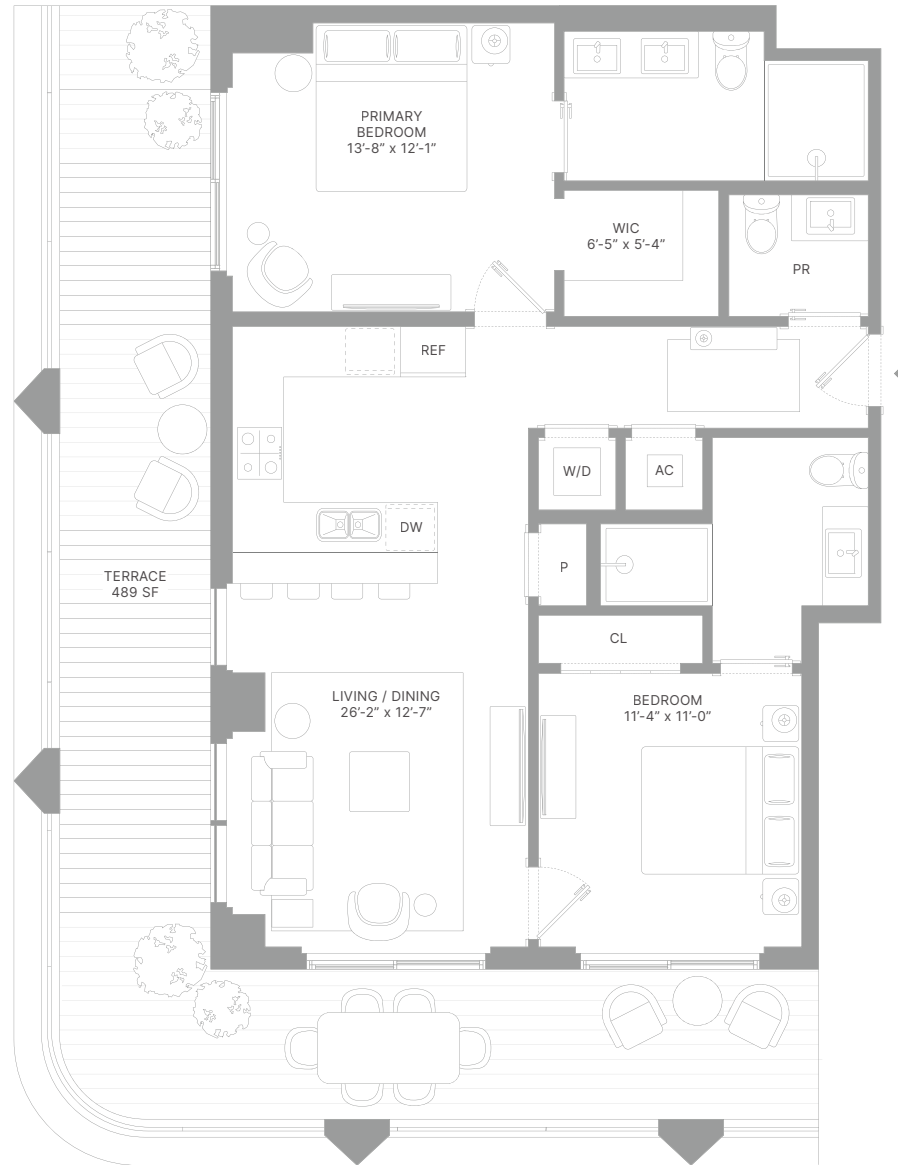


# RESIDENCE 10

LEVEL 12 - 32

**2** Bedrooms | **2.5** Bathrooms

Interior 1,060 SF / 98.47 m<sup>2</sup>  
 Terrace 489 SF / 45.42 m<sup>2</sup>  
**Total 1,549 SF / 143.90 m<sup>2</sup>**



430 NE 29TH STREET, MIAMI, FL 33137

DISCLAIMER: REPRESENTATIONS CANNOT BE RELIED UPON AS CORRECTLY STATING THE REPRESENTATIONS OF THE DEVELOPER, SSC EDGEWATER OWNER, LLC. FOR CORRECT REPRESENTATIONS, REFERENCE SHOULD BE MADE TO THE DOCUMENTS REQUIRED BY SECTION 7E.04, FLORIDA STATUTES, TO BE FURNISHED BY A DEVELOPER TO A BUYER OR LESSEE. THIS OFFERING IS MADE ONLY BY THE OFFERING DOCUMENTS FOR THE CONDOMINIUM AND NO STATEMENT SHOULD BE RELIED UPON IF NOT MADE IN THE OFFERING DOCUMENTS. THIS IS NOT AN OFFER TO SELL OR SOLICITATION OF OFFERS TO BUY. THE CONDOMINIUM UNITS IN STATES WHERE SUCH OFFER OR SOLICITATION CANNOT BE MADE, PRICES, PLANS AND SPECIFICATIONS ARE SUBJECT TO CHANGE WITHOUT NOTICE. WE ARE PLEDGED TO THE LETTER AND SPIRIT OF THE U.S. POLICY FOR ACHIEVEMENT OF EQUAL HOUSING OPPORTUNITY THROUGHOUT THE NATION. WE ENCOURAGE AND SUPPORT AN AFFIRMATIVE ADVERTISING AND MARKETING PROGRAM IN WHICH THERE ARE NO BARRIERS TO OBTAINING HOUSING BECAUSE OF RACE, COLOR, RELIGION, SEX, HANDICAP, FAMILY STATUS OR NATIONAL ORIGIN. (b) The project graphics, renderings and text provided herein are copyrighted works owned by the developer. © 2025, SSC EDGEWATER OWNER, LLC. All rights reserved. Unauthorized reproduction, display or other dissemination of such materials is strictly prohibited and constitutes copyright infringement. There are various recognized methods for calculating the square footage of a unit. The square footage and dimensions stated herein are measured to the exterior boundaries of the exterior walls and the centerline of exterior opening walls and in fact vary from the dimensions that would be determined by using the description and definition of the "unit" set forth in the Declaration (which generally only includes the interior air space between the perimeter walls and excludes interior structural components). For your reference, the area of the unit, determined in accordance with those defined unit boundaries, is set forth in the Declaration. Note that measurements of areas set forth on this floor plan are generally taken at the greatest points of each given room, even if the room were a perfect rectangle, without regard for any alcove. Accordingly, the area of the actual room will typically be smaller than the product obtained by multiplying the stated length times width. The dimensions and square footage stated for this unit floor plan are approximate and may vary with actual construction, and all floor plans and development plans are subject to change. All depictions of furnishings, appliances, built-ins, counters, soffits, floor coverings, lighting and other matters of detail, including, without limitation, items of finish and decoration, are conceptual only and are not necessarily included in each unit. Consult the Developer's prospectus for information on what is offered with the unit.



# RESIDENCE 00

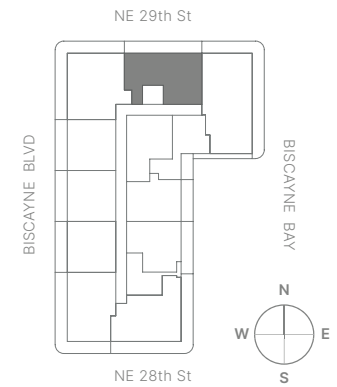
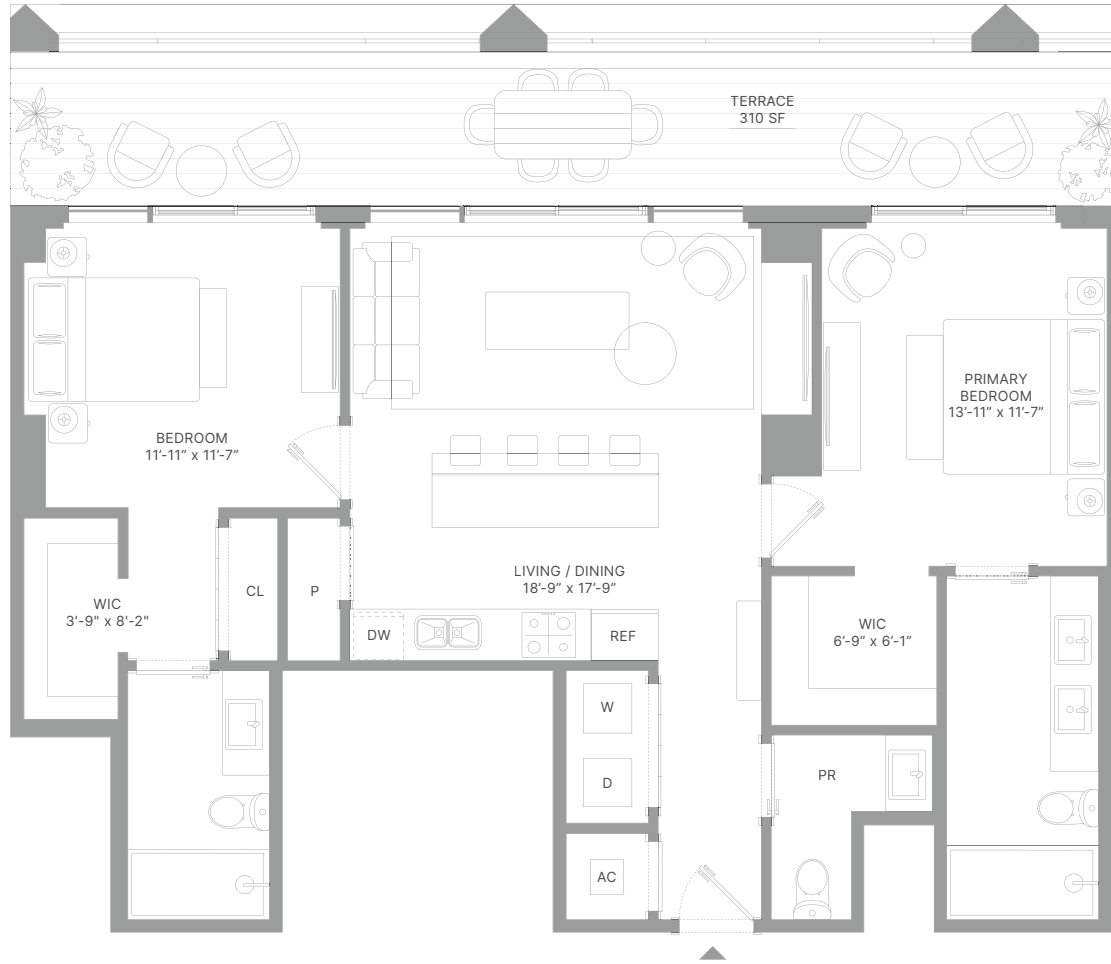
LEVEL 12 - 32

**2** Bedrooms | **2.5** Bathrooms

Interior 1,145 SF / 106.37 m<sup>2</sup>

Terrace 310 SF / 28.79 m<sup>2</sup>

**Total 1,455 SF / 135.17 m<sup>2</sup>**



430 NE 29TH STREET, MIAMI, FL 33137

DISCLAIMER: REPRESENTATIONS CANNOT BE RELIED UPON AS CORRECTLY STATING THE REPRESENTATIONS OF THE DEVELOPER, SSC EDGEWATER OWNER, LLC. FOR CORRECT REPRESENTATIONS, REFERENCE SHOULD BE MADE TO THE DOCUMENTS REQUIRED BY SECTION 7E.04, FLORIDA STATUTES, TO BE FURNISHED BY A DEVELOPER TO A BUYER OR LESSEE. THIS OFFERING IS MADE ONLY BY THE OFFERING DOCUMENTS FOR THE CONDOMINIUM AND NO STATEMENT SHOULD BE RELIED UPON IF NOT MADE IN THE OFFERING DOCUMENTS. THIS IS NOT AN OFFER TO SELL, OR SOLICITATION OF OFFERS TO BUY, THE CONDOMINIUM UNITS IN STATES WHERE SUCH OFFER OR SOLICITATION CANNOT BE MADE. PRICES, PLANS AND SPECIFICATIONS ARE SUBJECT TO CHANGE WITHOUT NOTICE. WE ARE PLEDGED TO THE LETTER AND SPIRIT OF THE U.S. POLICY FOR ACHIEVEMENT OF EQUAL HOUSING OPPORTUNITY THROUGHOUT THE NATION. WE ENCOURAGE AND SUPPORT AN AFFIRMATIVE ADVERTISING AND MARKETING PROGRAM IN WHICH THERE ARE NO BARRIERS TO OBTAINING HOUSING BECAUSE OF RACE, COLOR, RELIGION, SEX, HANDICAP, FAMILY STATUS OR NATIONAL ORIGIN. (b) The project graphics, renderings and text provided herein are copyrighted works owned by the developer. © 2025, SSC EDGEWATER OWNER, LLC. All rights reserved. Unauthorized reproduction, display or other dissemination of such materials is strictly prohibited and constitutes copyright infringement. There are various recognized methods for calculating the square footage of a unit. The square footage and dimensions stated herein are measured to the exterior boundaries of the exterior walls and the centerline of interior dividing walls and in fact vary from the dimensions that would be determined by using the description and definition of the "unit" set forth in the Declaration (which generally only includes the interior airspace between the perimeter walls and excludes interior structural components). For your reference, the area of the unit, determined in accordance with those defined unit boundaries, is set forth in the Declaration. Note that measurements of areas set forth on this floor plan are generally taken at the greatest points of each given room, even if the room were a perfect rectangle, without regard for any alcove. Accordingly, the area of the actual room will typically be smaller than the product obtained by multiplying the stated length times width. The dimensions and square footage stated for this unit floor plan are approximate and may vary with actual construction, and all floor plans and development plans are subject to change. All depictions of furnishings, appliances, built-ins, counters, soffits, floor coverings, lighting and other matters of detail, including, without limitation, items of finish and decoration, are conceptual only and are not necessarily included in each unit. Consult the Developer's prospectus for information on what is offered with the unit.