

EAST UNIT F

STUDIO
1 BATHROOM

ADA UNIT

LINE 04
UNIT 904

INTERIOR
347 sf | 32 m²

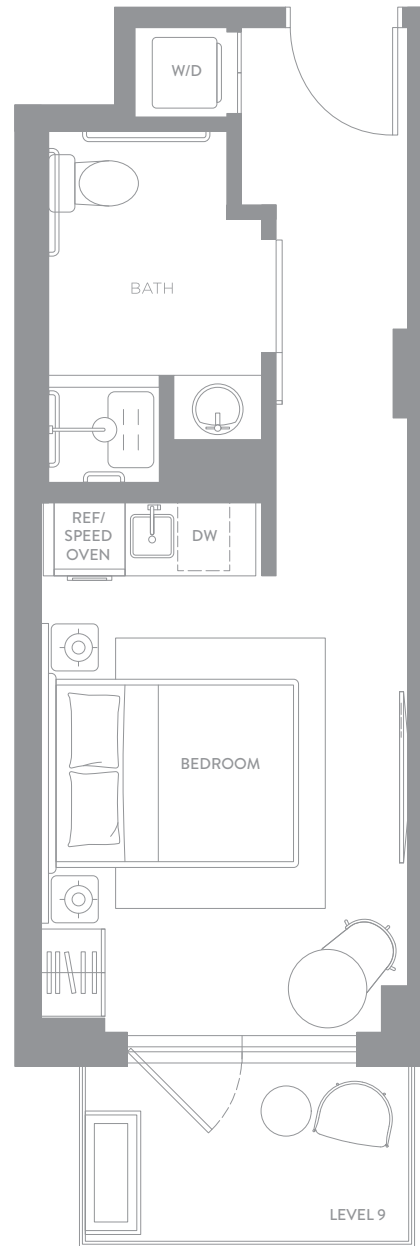
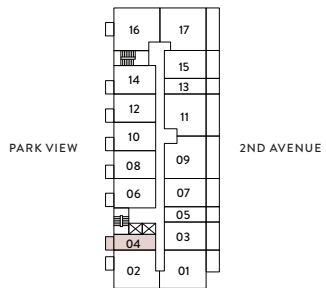
EXTERIOR
57 sf | 5 m²

TOTAL
404 sf | 37 m²

domus[®]

F L A T S

BRICKELL PARK



DEVELOPED BY NORTH
DEVELOPMENT

® ORAL REPRESENTATIONS CANNOT BE RELIED UPON AS CORRECTLY STATING THE REPRESENTATIONS OF THE DEVELOPER. FOR CORRECT REPRESENTATIONS, MAKE REFERENCE TO THIS BROCHURE AND TO THE DOCUMENTS REQUIRED BY SECTION 718.503, FLORIDA STATUTES, TO BE FURNISHED BY A DEVELOPER TO A BUYER OR LESSEE. Stated square footages and dimensions of residences are measured to the exterior boundaries of the exterior walls and the centerline of interior demising walls between units and in fact vary from the square footages and dimensions that would be determined by using the description and definition of the "Unit" set forth in the Declaration of Condominium, which generally only includes the interior airspace between the perimeter walls and excludes all interior structural components and other common elements. The method of measurement used in these materials is generally used in sales materials and is provided to allow a prospective buyer to compare the Units with units in other projects that utilize the same method. Refer to Exhibit "2" to the Declaration of Condominium for the unit dimensions calculated based on the description and definition of the "Unit" set forth in the Declaration. Terraces are not part of the Unit. Measurements of rooms set forth on this floor plan are generally taken at the farthest points of each given room (as described above and as if the room were a perfect rectangle), without regard for any cutouts or variations. Accordingly, the interior air space dimensions of the actual room will typically be smaller than the product obtained by multiplying the stated length and width. All measurements are estimates based on preliminary plans and will vary with actual construction. All floor plans, specifications and other development plans are proposed and conceptual only, and are subject to change and will not necessarily accurately reflect the final plans and specifications.

EAST UNIT F

STUDIO
1 BATHROOM

LINE 04
FLOORS 02 TO 12

INTERIOR

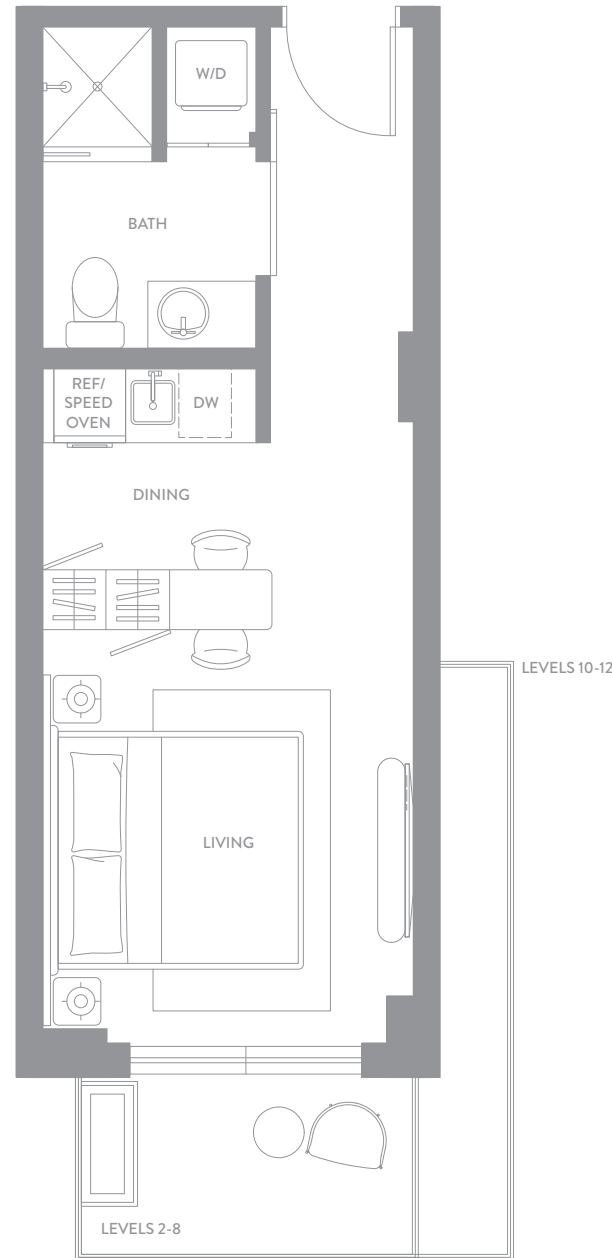
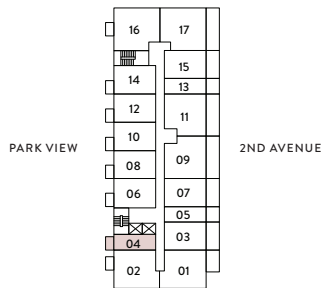
330 sf | 31 m²
347 sf | 32 m²

EXTERIOR

57 sf | 5 m²
119 sf | 11 m²

TOTAL

387 sf | 36 m²
466 sf | 43 m²



domus[®]

F L A T S

BRICKELL PARK

DEVELOPED BY NORTH
DEVELOPMENT

ORAL REPRESENTATIONS CANNOT BE RELIED UPON AS CORRECTLY STATING THE REPRESENTATIONS OF THE DEVELOPER. FOR CORRECT REPRESENTATIONS, MAKE REFERENCE TO THIS BROCHURE AND TO THE DOCUMENTS REQUIRED BY SECTION 718.503, FLORIDA STATUTES, TO BE FURNISHED BY A DEVELOPER TO A BUYER OR LESSEE. Stated square footages and dimensions of residences are measured to the exterior boundaries of the exterior walls and the centerline of interior demising walls between units and in fact vary from the square footages and dimensions that would be determined by using the description and definition of the "Unit" set forth in the Declaration of Condominium, which generally only includes the interior airspace between the perimeter walls and excludes all interior structural components and other common elements. The method of measurement used in these materials is generally used in sales materials and is provided to allow a prospective buyer to compare the Units with units in other projects that utilize the same method. Refer to Exhibit "2" to the Declaration of Condominium for the unit dimensions calculated based on the description and definition of the "Unit" set forth in the Declaration. Terraces are not part of the Unit. Measurements of rooms set forth on this floor plan are generally taken at the farthest points of each given room (as described above and as if the room were a perfect rectangle), without regard for any cutouts or variations. Accordingly, the interior air space dimensions of the actual room will typically be smaller than the product obtained by multiplying the stated length and width. All measurements are estimates based on preliminary plans and will vary with actual construction. All floor plans, specifications and other development plans are proposed and conceptual only, and are subject to change and will not necessarily accurately reflect the final plans and specifications.

WEST UNIT F

STUDIO
1 BATHROOM

LINES 05 & 13
FLOORS 02 TO 12

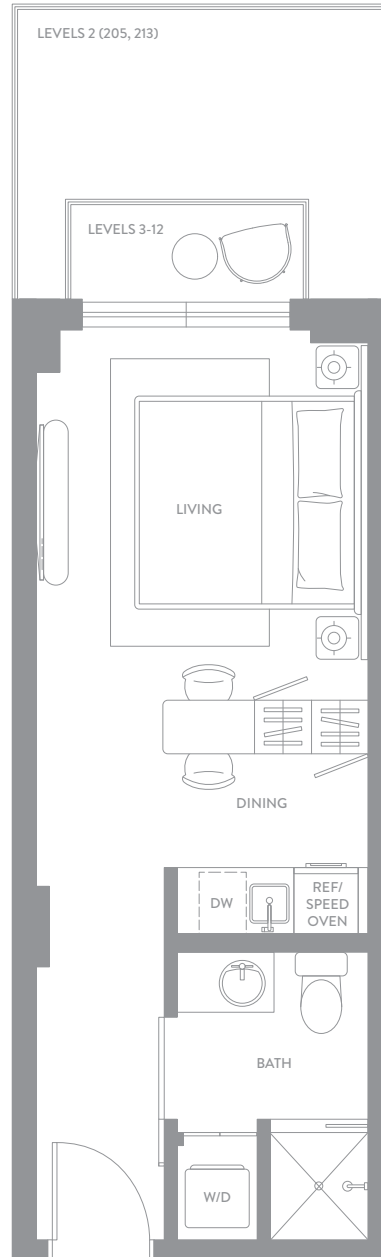
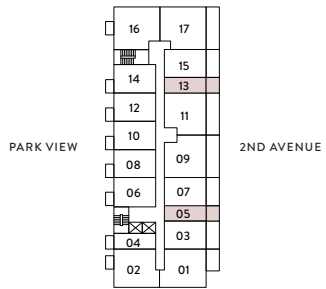
INTERIOR
330 sf | 31 m²

EXTERIOR
23 sf | 2 m²

TOTAL
353 sf | 33 m²

2nd Floor Exterior

107 sf | 10 m²



domus[®]
FLATS

BRICKELL PARK

DEVELOPED BY NORTH
DEVELOPMENT

® ORAL REPRESENTATIONS CANNOT BE RELIED UPON AS CORRECTLY STATING THE REPRESENTATIONS OF THE DEVELOPER. FOR CORRECT REPRESENTATIONS, MAKE REFERENCE TO THIS BROCHURE AND TO THE DOCUMENTS REQUIRED BY SECTION 718.503, FLORIDA STATUTES, TO BE FURNISHED BY A DEVELOPER TO A BUYER OR LESSEE. Stated square footages and dimensions of residences are measured to the exterior boundaries of the exterior walls and the centerline of interior demising walls between units and in fact vary from the square footages and dimensions that would be determined by using the description and definition of the "Unit" set forth in the Declaration of Condominium, which generally only includes the interior airspace between the perimeter walls and excludes all interior structural components and other common elements. The method of measurement used in these materials is generally used in sales materials and is provided to allow a prospective buyer to compare the Units with units in other projects that utilize the same method. Refer to Exhibit "2" to the Declaration of Condominium for the unit dimensions calculated based on the description and definition of the "Unit" set forth in the Declaration. Terraces are not part of the Unit. Measurements of rooms set forth on this floor plan are generally taken at the farthest points of each given room (as described above and as if the room were a perfect rectangle), without regard for any cutouts or variations. Accordingly, the interior air space dimensions of the actual room will typically be smaller than the product obtained by multiplying the stated length and width. All measurements are estimates based on preliminary plans and will vary with actual construction. All floor plans, specifications and other development plans are proposed and conceptual only, and are subject to change and will not necessarily accurately reflect the final plans and specifications.