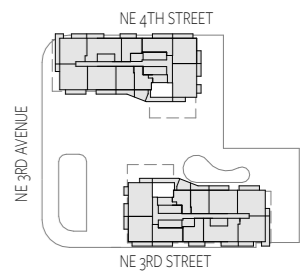
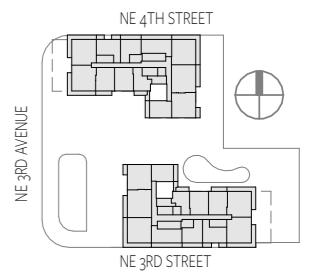


Interior Area	535 SF	50 SQM
Exterior Area	231 SF	21 SQM
Total Area	766 SF	71 SQM



A STATEMENT OF BEAUTY



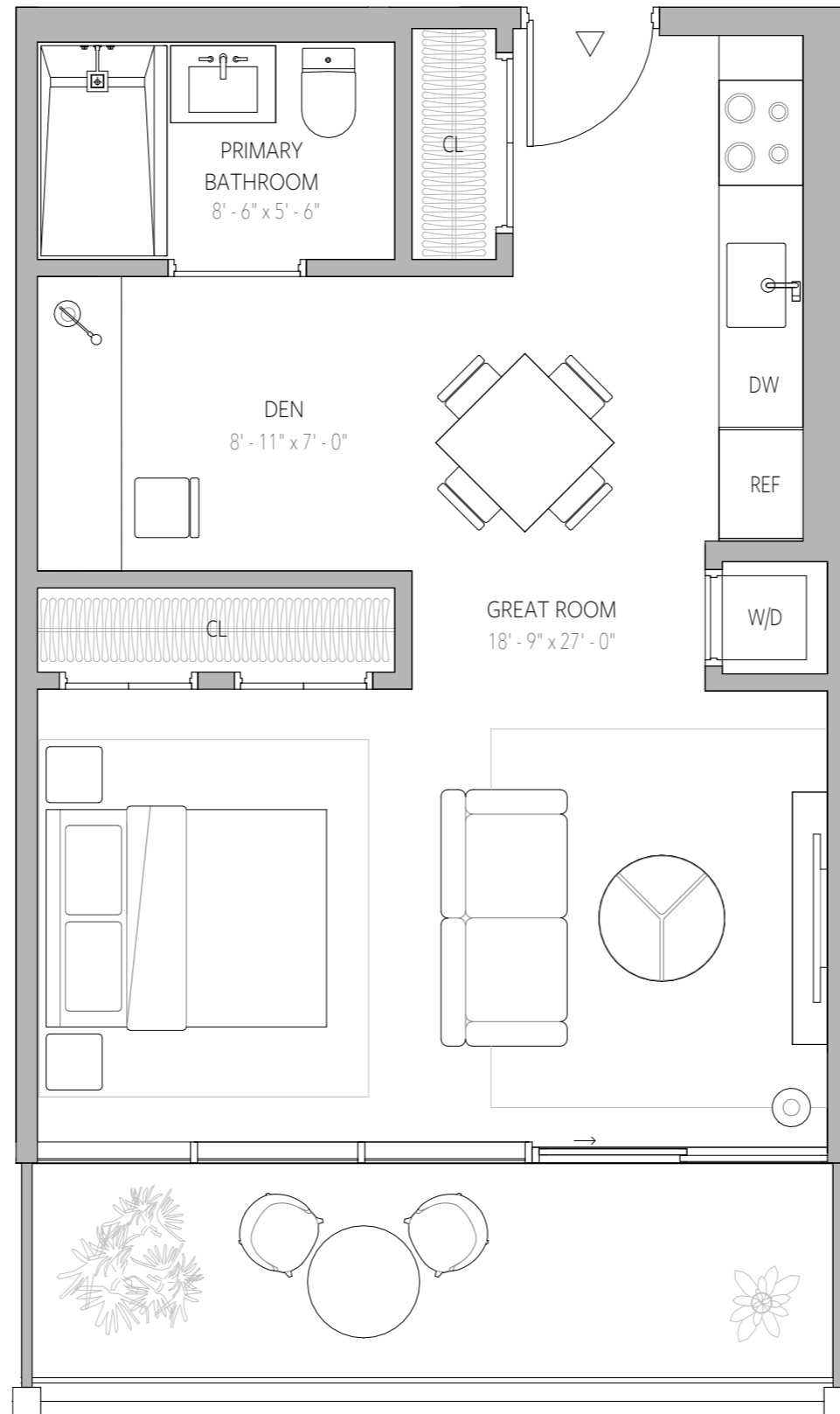


A STATEMENT OF BEAUTY

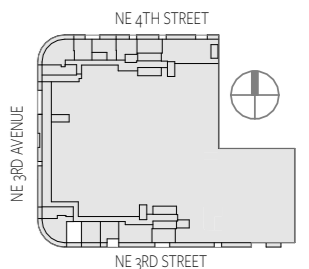


FLOOR PLAN A3  
 FLOORS 03-09  
 JUNIOR 1 BEDROOM + DEN |  
 1 BATHROOM

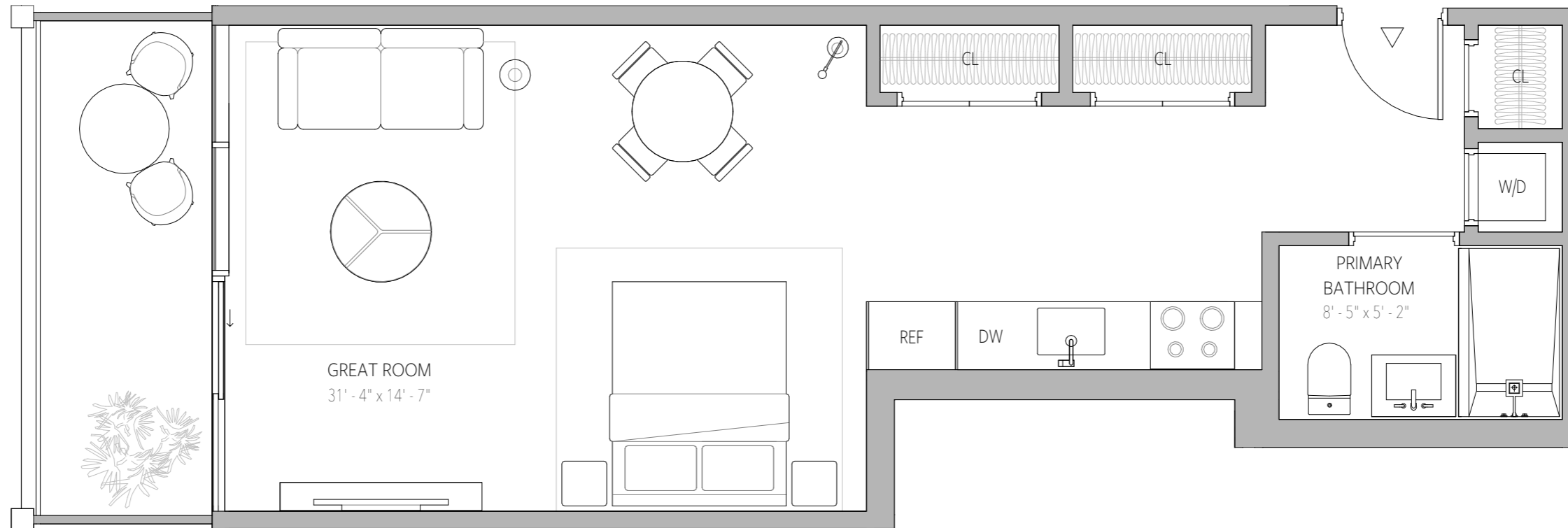
Interior Area 530 SF 49 SQM  
 Exterior Area 0 - 109 SF 0 - 10 SQM  
 Total Area 530 - 639 SF 49 - 59 SQM



A STATEMENT OF BEAUTY



**ORAL REPRESENTATIONS CANNOT BE RELIED UPON AS CORRECTLY STATING THE REPRESENTATIONS OF THE DEVELOPER. FOR CORRECT REPRESENTATIONS, MAKE REFERENCE TO THIS BROCHURE AND TO THE DOCUMENTS REQUIRED BY SECTION 718.503, FLORIDA STATUTES, TO BE FURNISHED BY A DEVELOPER TO A BUYER OR LESSEE.** Stated dimensions are measured to the exterior boundaries of the exterior walls and the centerline of interior demising walls and in fact vary from the dimensions that would be determined by using the description and definition of the "Unit" set forth in the Declaration (which generally only includes the interior airspace between the perimeter walls and excludes interior structural components). For your reference, the area of the Unit, determined in accordance with those defined unit boundaries, is set forth on Exhibit "3" to the Declaration. Note that measurements of rooms set forth on this floor plan are generally taken at the greatest points of each given room (as if the room were a perfect rectangle), without regard for any cutouts. Accordingly, the area of the actual room will typically be smaller than the product obtained by multiplying the stated length times width. All dimensions are approximate and may vary with actual construction, and all floor plans and development plans are subject to change. All depictions of furniture and decoration shown hereon are conceptual only. Consult your purchase agreement and prospectus for the exact items included with the sale of a Unit.



A STATEMENT OF BEAUTY

