

INTRACOASTAL

Residences 302-I & 306-I

5 Bedroom | 5.5 Bathroom
with Flex Space, Den & Family Room

Residence 302-I

| | |
|---------|-----------|
| UNIT | 6,419 SF |
| BALCONY | 2,347 SF |
| ROOFTOP | 4,330 SF |
| TOTAL | 13,096 SF |

Residence 306-I

| | |
|---------|-----------|
| UNIT | 6,419 SF |
| BALCONY | 2,347 SF |
| ROOFTOP | 4,100 SF |
| TOTAL | 12,866 SF |

Intimate Waterfront Living

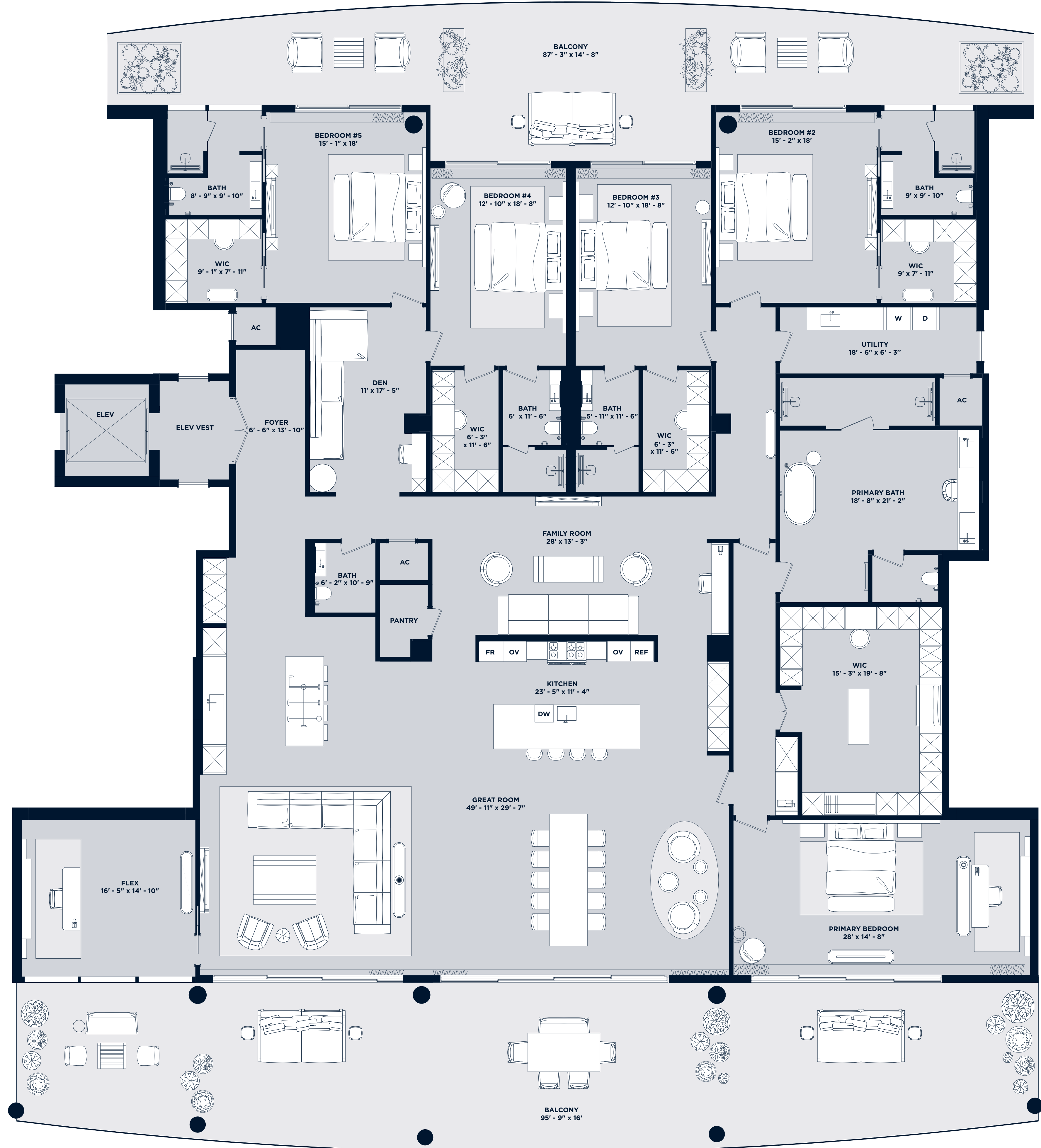
A Rosewood Residence

DEVELOPERS
The Related Group & Dezer Development

ARCHITECT
Arquitectonica

INTERIOR DESIGNER
Studio Piet Bonn

1180 Hillsboro Mile
Hillsboro Beach, Florida 33062



The dimensions stated for this floor plan are approximate because there are various recognized methods for calculating the square footage of a unit. The square footage stated here is calculated from the exterior boundaries of the exterior walls to the centerline of interior opening walls without deductions for closets, curves, or architectural features. This method typically results in quoted dimensions greater than the dimensions that would be determined by using other accepted methods. The definition of "unit" and the calculation method to be relied upon is set forth by the Developer in Developer's prospectus which method may result in a square footage calculation less than the result of the calculation method used here. Renderings depict features not included with purchase, but which are available at an additional cost such as wine bar and closet millwork among others. Consult the Developer's prospectus to learn what is included with Unit purchase and to understand Unit dimensions. 2023 © HILLSBORO MILE PROPERTY OWNERS, LLC, with all rights reserved.

