

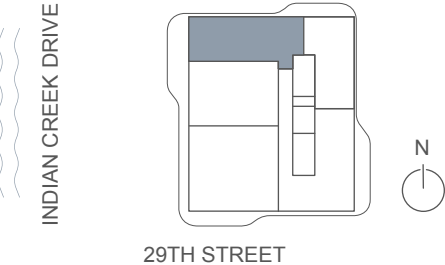
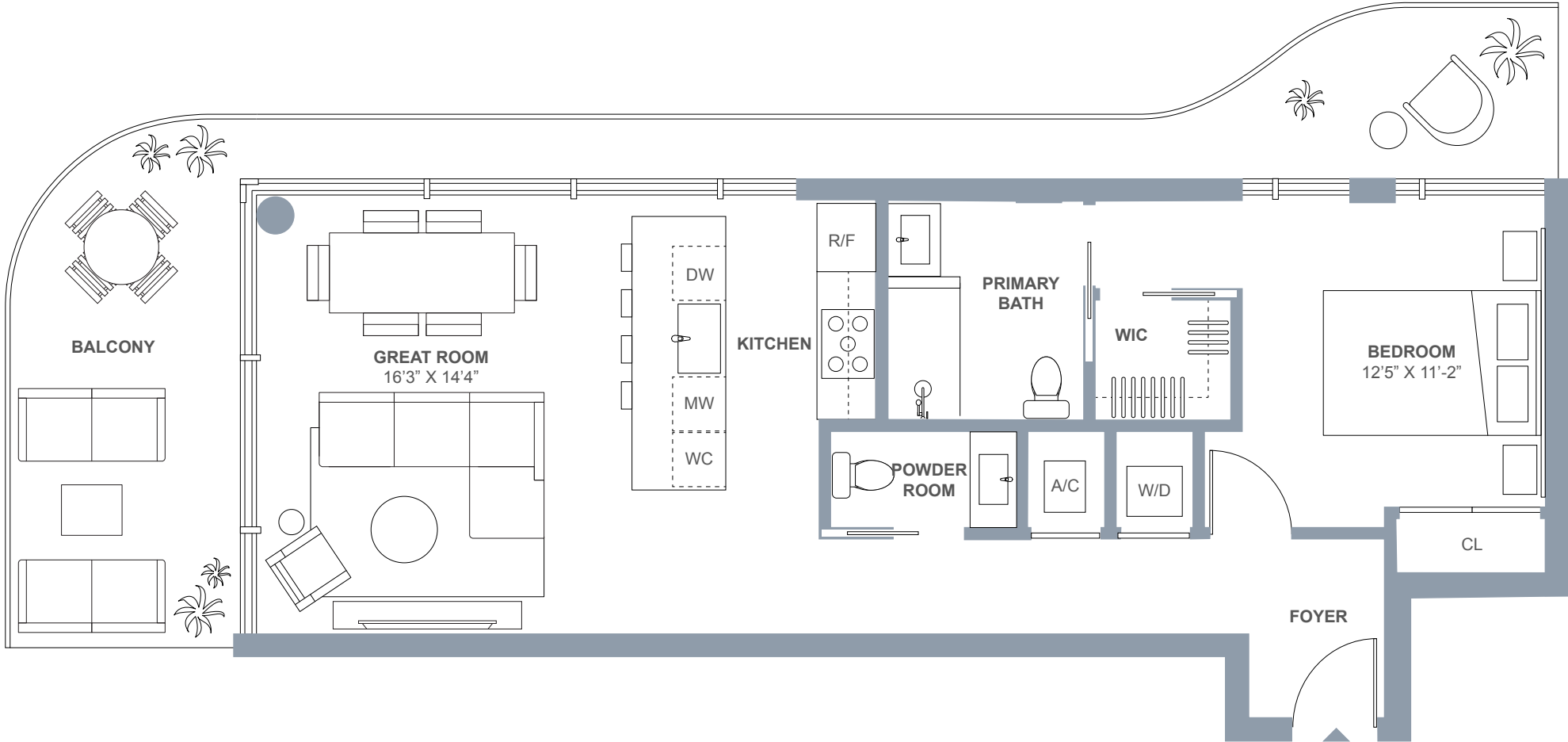
TWENTY NINE
INDIAN CREEK

MIAMI BEACH

Residence 01

LEVEL 3

1 BEDROOM		
1.5 BATHROOMS		
INTERIOR	845 SF	79 SQ. M
EXTERIOR	305 SF	28 SQ. M
TOTAL	1,150 SF	107 SQ. M



2901 INDIAN CREEK DRIVE, MIAMI BEACH, FLORIDA, 33140

Stated dimensions are measured to the exterior boundaries of the exterior walls and the centerline of interior demising walls and in fact vary from the dimensions that would be determined by using the description and definition of the "unit" set forth in the declaration (which generally only includes the interior airspace between the perimeter walls and excludes interior structural components). For your reference, the area of the unit, determined in accordance with those defined unit boundaries, is set forth in exhibit 3 to the declaration of the condominium. Note that measurements of rooms set forth on this floor plan are generally taken at the greatest points of each given room (as if the room were a perfect rectangle), without regard for any cutouts. Accordingly, the area of the actual room will typically be smaller than the product obtained by multiplying the stated length times width. All dimensions are approximate and may vary with actual construction, and all floor plans and development plans are subject to change.

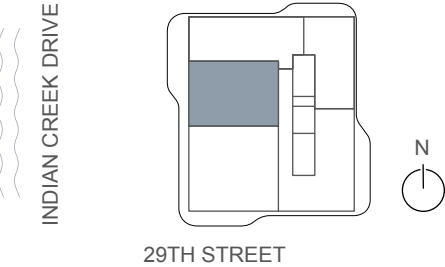
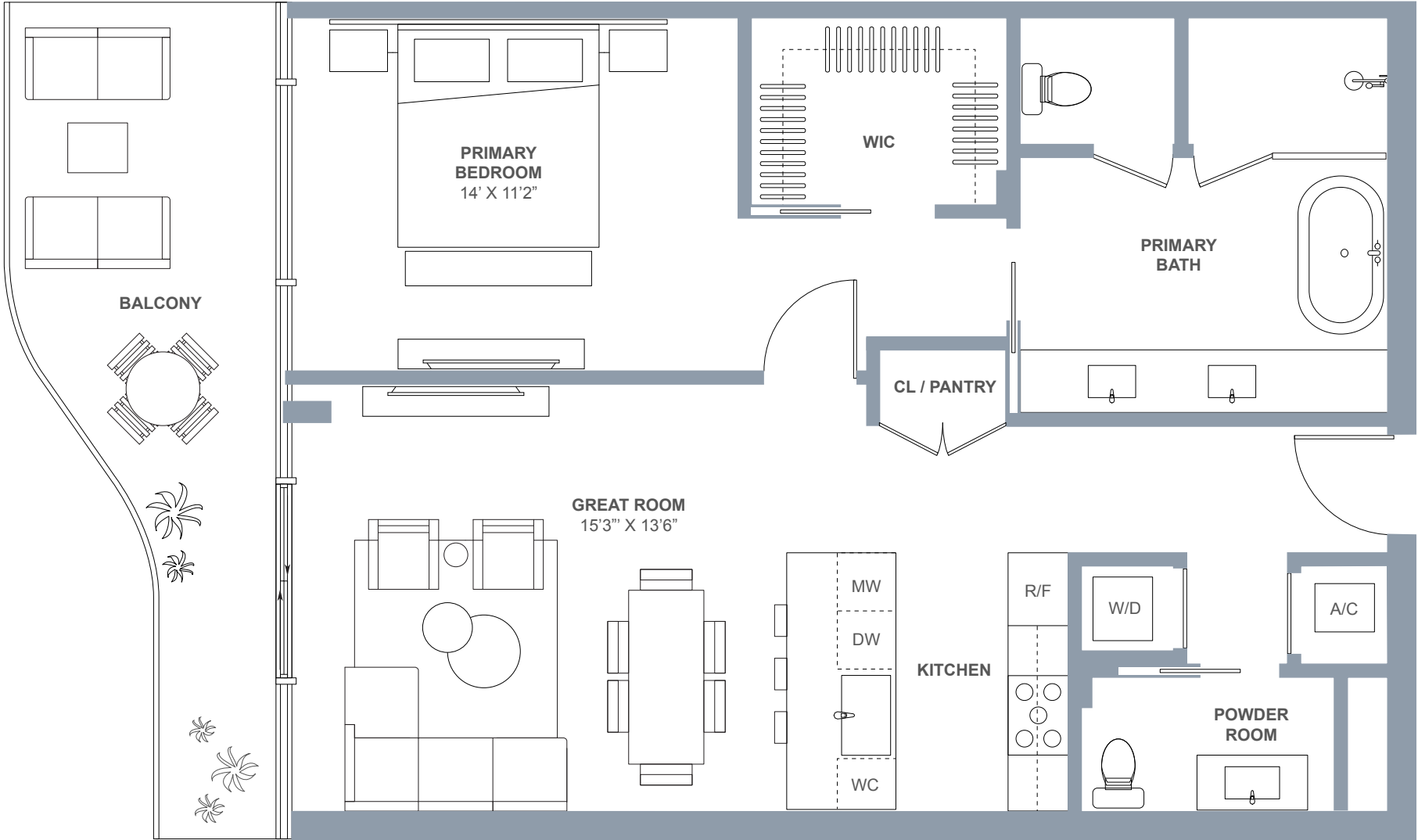
TWENTY NINE
INDIAN CREEK

MIAMI BEACH

Residence 02

LEVEL 3

1 BEDROOM		
1.5 BATHROOMS		
INTERIOR	919 SF	85 SQ. M
EXTERIOR	164 SF	15 SQ. M
TOTAL	1,083 SF	100 SQ. M



2901 INDIAN CREEK DRIVE, MIAMI BEACH, FLORIDA, 33140

Stated dimensions are measured to the exterior boundaries of the exterior walls and the centerline of interior demising walls and in fact vary from the dimensions that would be determined by using the description and definition of the "unit" set forth in the declaration (which generally only includes the interior airspace between the perimeter walls and excludes interior structural components). For your reference, the area of the unit, determined in accordance with those defined unit boundaries, is set forth in exhibit 3 to the declaration of the condominium. Note that measurements of rooms set forth on this floor plan are generally taken at the greatest points of each given room (as if the room were a perfect rectangle), without regard for any cutouts. Accordingly, the area of the actual room will typically be smaller than the product obtained by multiplying the stated length times width. All dimensions are approximate and may vary with actual construction, and all floor plans and development plans are subject to change.

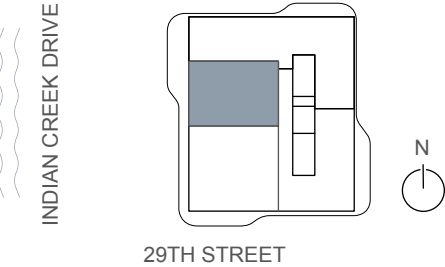
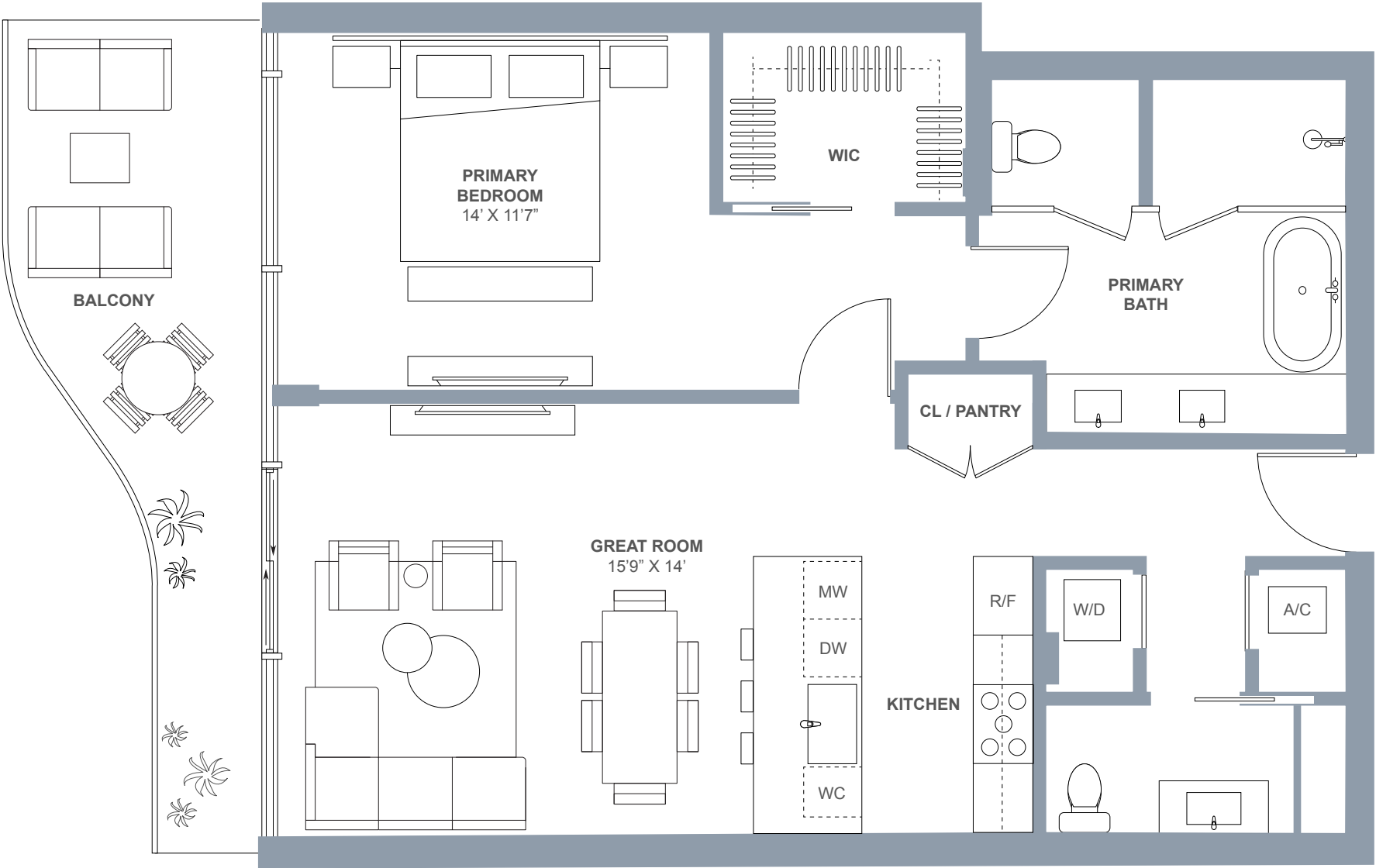
TWENTY NINE
INDIAN CREEK

MIAMI BEACH

Residence 02

LEVELS 5 & 7

1 BEDROOM	
1.5 BATHROOMS	
INTERIOR	933 SF 87 SQ. M
EXTERIOR	146 SF 14 SQ. M
TOTAL	1,079 SF 101 SQ. M



2901 INDIAN CREEK DRIVE, MIAMI BEACH, FLORIDA, 33140

Stated dimensions are measured to the exterior boundaries of the exterior walls and the centerline of interior demising walls and in fact vary from the dimensions that would be determined by using the description and definition of the "unit" set forth in the declaration (which generally only includes the interior airspace between the perimeter walls and excludes interior structural components). For your reference, the area of the unit, determined in accordance with those defined unit boundaries, is set forth in exhibit 3 to the declaration of the condominium. Note that measurements of rooms set forth on this floor plan are generally taken at the greatest points of each given room (as if the room were a perfect rectangle), without regard for any cutouts. Accordingly, the area of the actual room will typically be smaller than the product obtained by multiplying the stated length times width. All dimensions are approximate and may vary with actual construction, and all floor plans and development plans are subject to change.

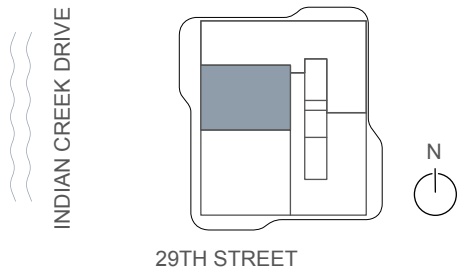
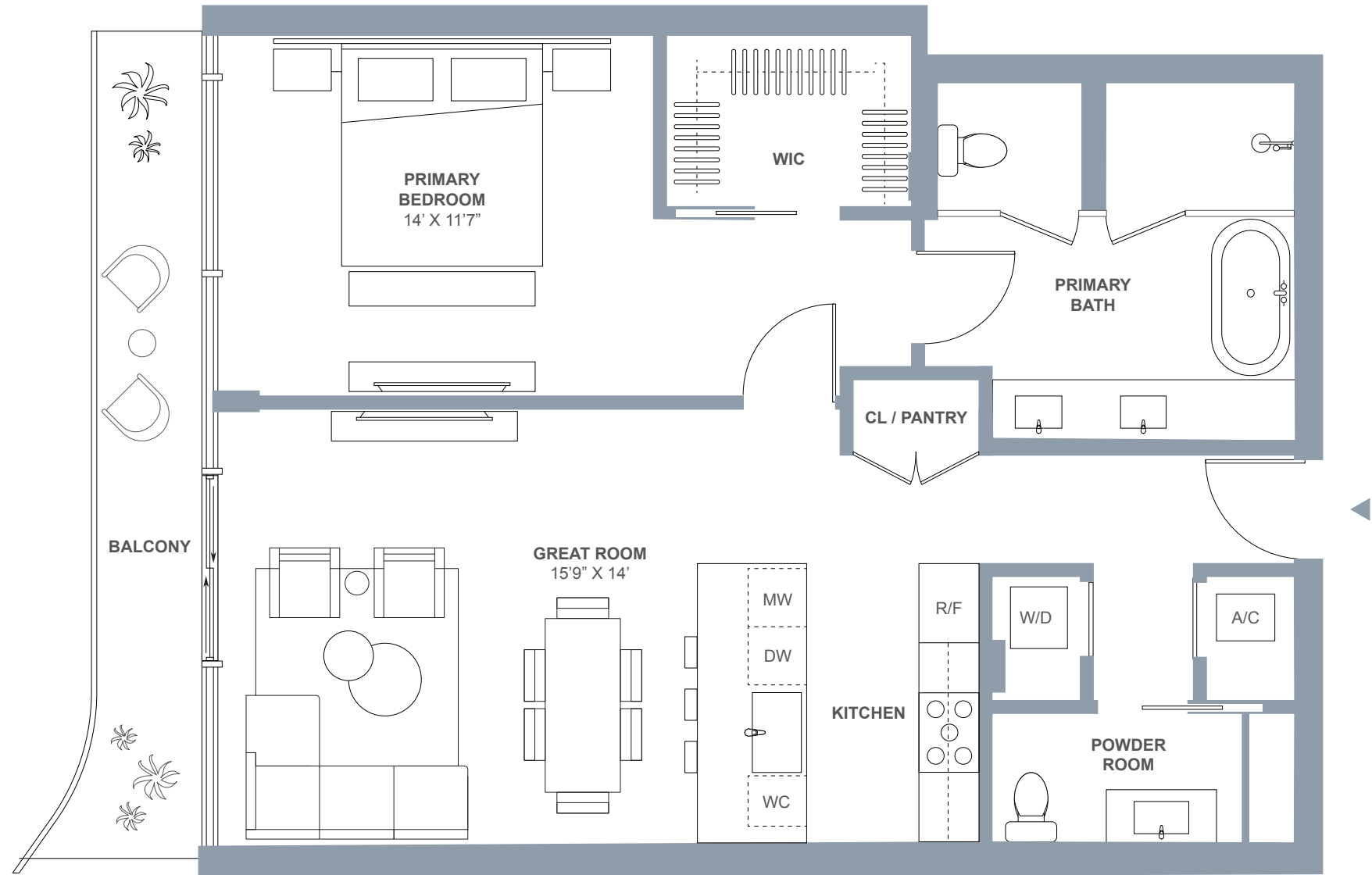
TWENTY NINE
INDIAN CREEK

MIAMI BEACH

Residence 02

LEVELS 4 & 6

1 BEDROOM		
1.5 BATHROOMS		
INTERIOR	933 SF	87 SQ. M
EXTERIOR	99 SF	9 SQ. M
TOTAL	1,032 SF	96 SQ. M



2901 INDIAN CREEK DRIVE, MIAMI BEACH, FLORIDA, 33140

Stated dimensions are measured to the exterior boundaries of the exterior walls and the centerline of interior demising walls and in fact vary from the dimensions that would be determined by using the description and definition of the "unit" set forth in the declaration (which generally only includes the interior airspace between the perimeter walls and excludes interior structural components). For your reference, the area of the unit, determined in accordance with those defined unit boundaries, is set forth in exhibit 3 to the declaration of the condominium. Note that measurements of rooms set forth on this floor plan are generally taken at the greatest points of each given room (as if the room were a perfect rectangle), without regard for any cutouts. Accordingly, the area of the actual room will typically be smaller than the product obtained by multiplying the stated length times width. All dimensions are approximate and may vary with actual construction, and all floor plans and development plans are subject to change.

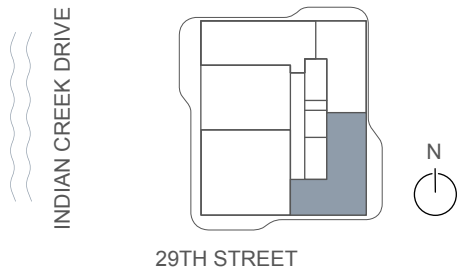
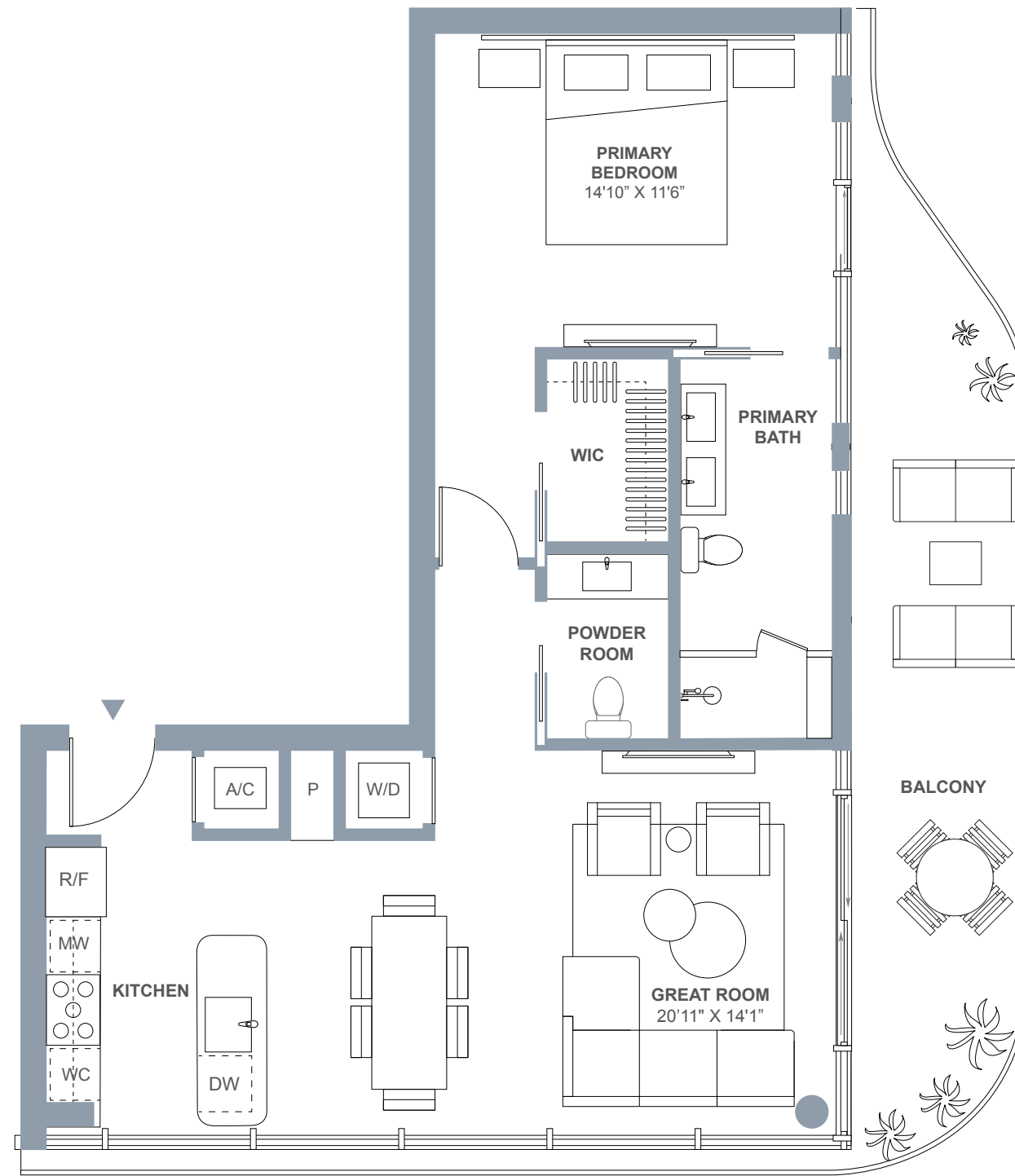
TWENTY NINE
INDIAN CREEK

MIAMI BEACH

Residence 04

LEVEL 3

1 BEDROOM		
1.5 BATHROOMS		
INTERIOR	851 SF	79 SQ. M
EXTERIOR	246 SF	22 SQ. M
TOTAL	1,097 SF	102 SQ. M



2901 INDIAN CREEK DRIVE, MIAMI BEACH, FLORIDA, 33140

Stated dimensions are measured to the exterior boundaries of the exterior walls and the centerline of interior demising walls and in fact vary from the dimensions that would be determined by using the description and definition of the "unit" set forth in the declaration (which generally only includes the interior airspace between the perimeter walls and excludes interior structural components). For your reference, the area of the unit, determined in accordance with those defined unit boundaries, is set forth in exhibit 3 to the declaration of the condominium. Note that measurements of rooms set forth on this floor plan are generally taken at the greatest points of each given room (as if the room were a perfect rectangle), without regard for any cutouts. Accordingly, the area of the actual room will typically be smaller than the product obtained by multiplying the stated length times width. All dimensions are approximate and may vary with actual construction, and all floor plans and development plans are subject to change.

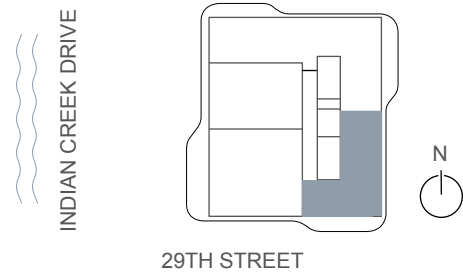
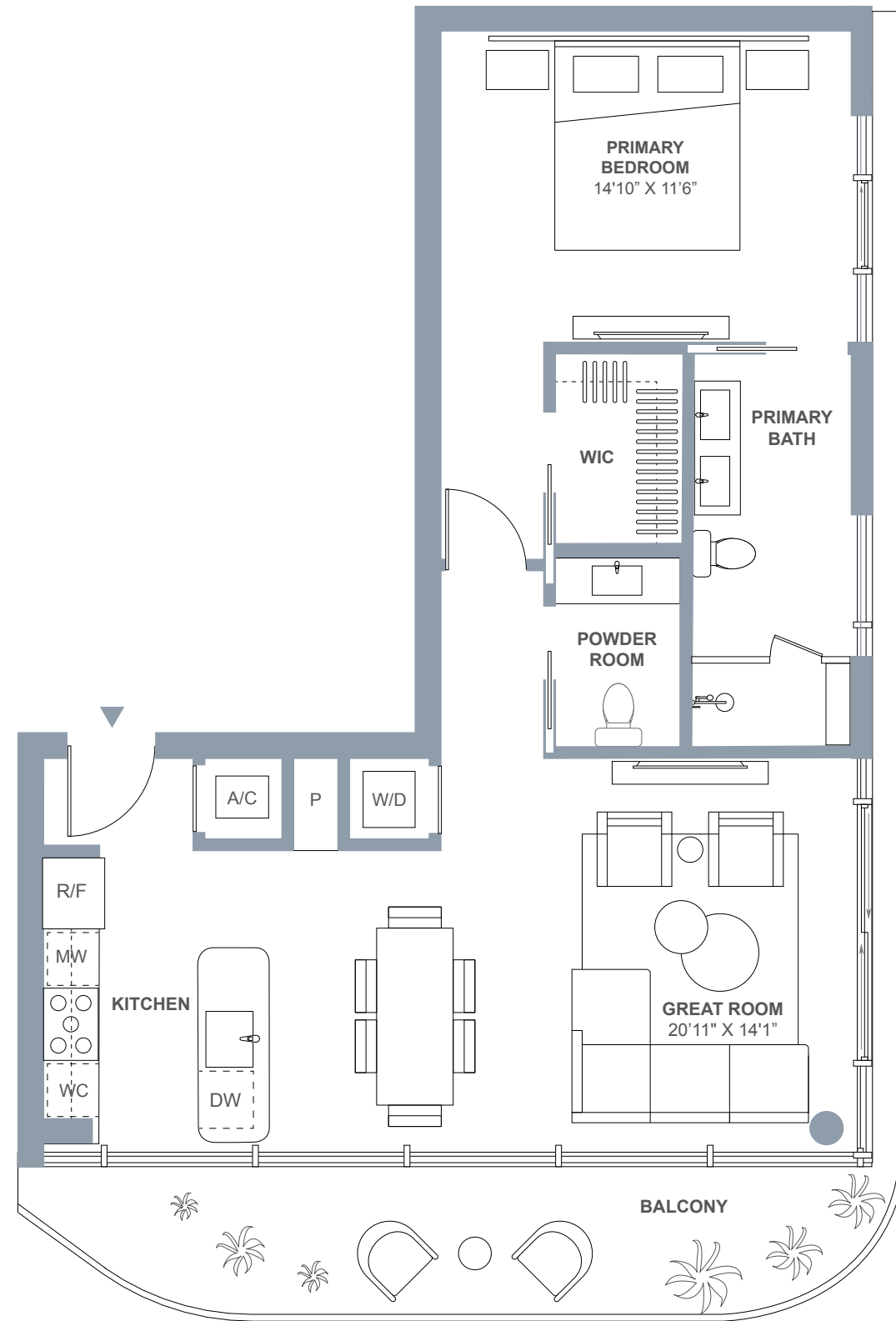
TWENTY NINE
INDIAN CREEK

MIAMI BEACH

Residence 04

LEVELS 4 & 6

1 BEDROOMS		
1.5 BATHROOMS		
INTERIOR	842 SF	78 SQ. M
EXTERIOR	182 SF	17 SQ. M
TOTAL	1,024 SF	95 SQ. M



2901 INDIAN CREEK DRIVE, MIAMI BEACH, FLORIDA, 33140

Stated dimensions are measured to the exterior boundaries of the exterior walls and the centerline of interior demising walls and in fact vary from the dimensions that would be determined by using the description and definition of the "unit" set forth in the declaration (which generally only includes the interior airspace between the perimeter walls and excludes interior structural components). For your reference, the area of the unit, determined in accordance with those defined unit boundaries, is set forth in exhibit 3 to the declaration of the condominium. Note that measurements of rooms set forth on this floor plan are generally taken at the greatest points of each given room (as if the room were a perfect rectangle), without regard for any cutouts. Accordingly, the area of the actual room will typically be smaller than the product obtained by multiplying the stated length times width. All dimensions are approximate and may vary with actual construction, and all floor plans and development plans are subject to change.

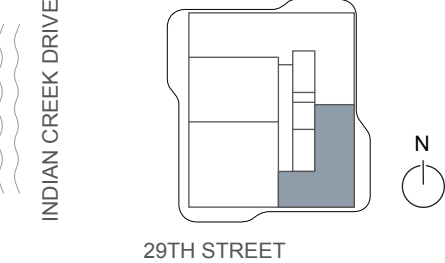
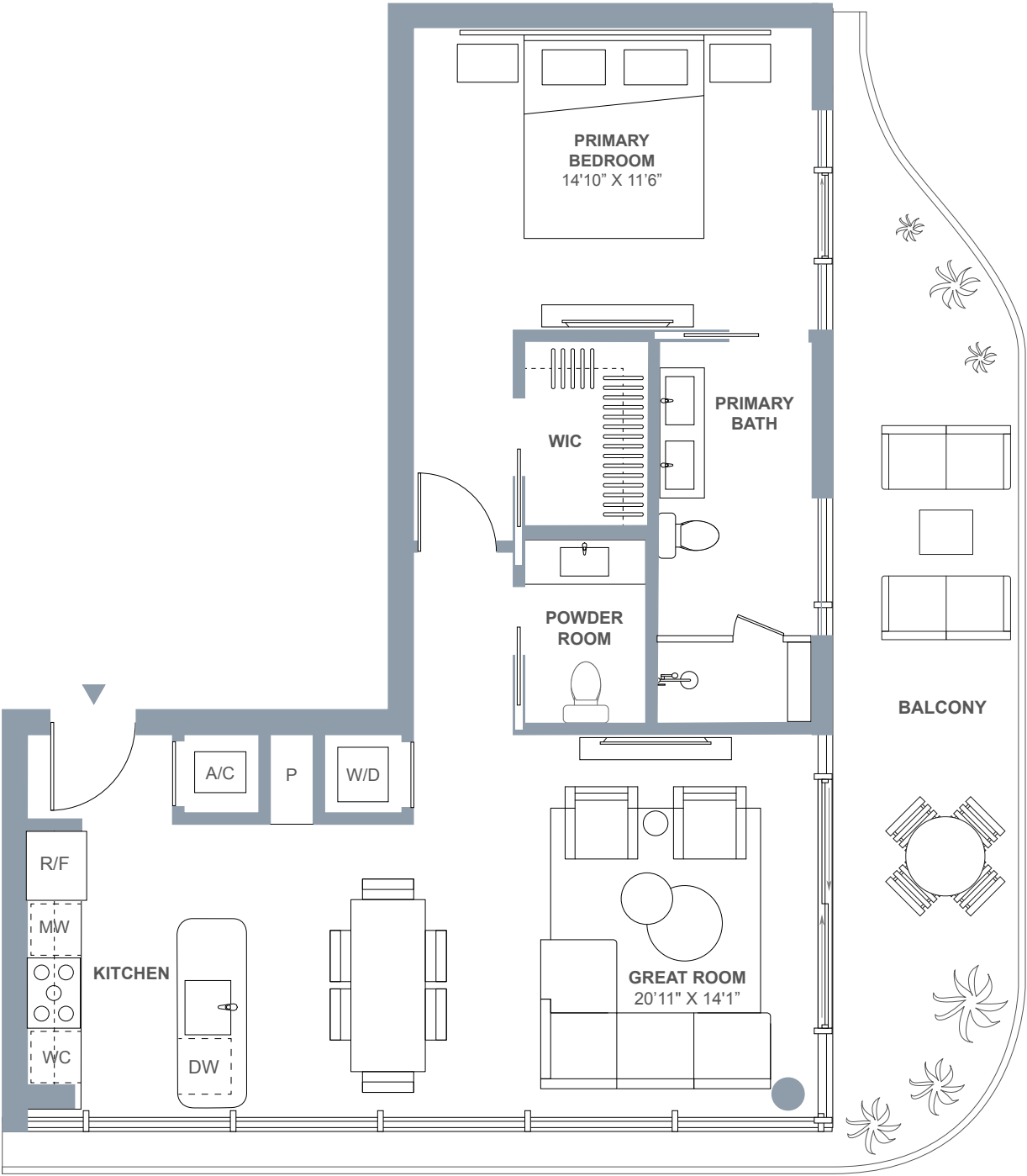
TWENTY NINE
INDIAN CREEK

MIAMI BEACH

Residence 04

LEVELS 5 & 7

1 BEDROOMS		
1.5 BATHROOMS		
INTERIOR	842 SF	78 SQ. M
EXTERIOR	284 SF	26 SQ. M
TOTAL	1,126 SF	104 SQ. M



2901 INDIAN CREEK DRIVE, MIAMI BEACH, FLORIDA, 33140

Stated dimensions are measured to the exterior boundaries of the exterior walls and the centerline of interior demising walls and in fact vary from the dimensions that would be determined by using the description and definition of the "unit" set forth in the declaration (which generally only includes the interior airspace between the perimeter walls and excludes interior structural components). For your reference, the area of the unit, determined in accordance with those defined unit boundaries, is set forth in exhibit 3 to the declaration of the condominium. Note that measurements of rooms set forth on this floor plan are generally taken at the greatest points of each given room (as if the room were a perfect rectangle), without regard for any cutouts. Accordingly, the area of the actual room will typically be smaller than the product obtained by multiplying the stated length times width. All dimensions are approximate and may vary with actual construction, and all floor plans and development plans are subject to change.