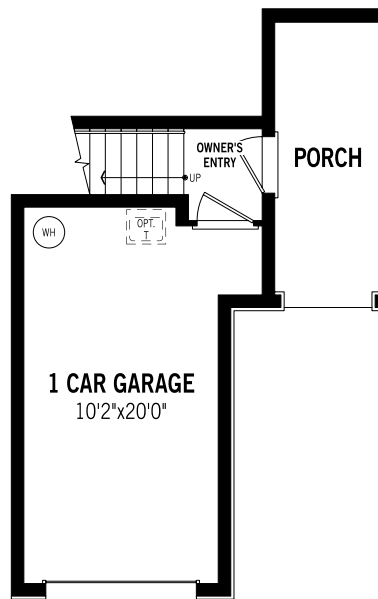




Seabright - First Floor

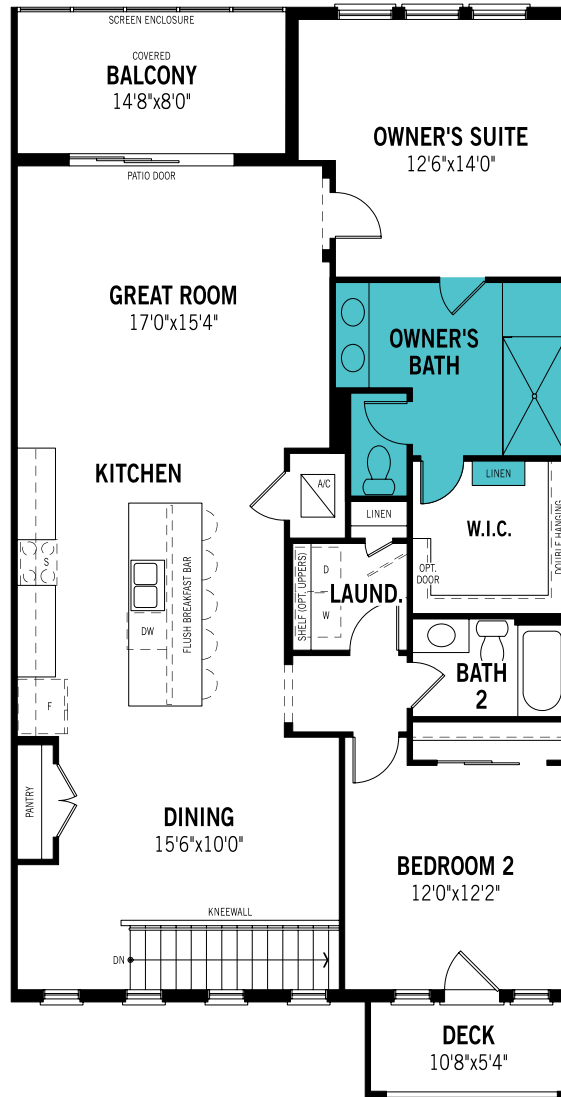


All renderings and graphics are artist's concept only for illustration, and are not part of a legal document. Mattamy reserves the right to make changes to these floorplans, specifications, dimensions and elevations without prior notice. These floor plans, room dimensions and exterior foot prints only apply to elevation "Craftsman" as far as listed base price and specifications. Note that plan square footages and room dimensions may vary according to elevation and options selected. Plan may be built as the mirror image. Flooring illustrations are used to show area of flooring, actual flooring type is specified on the Community Feature Sheet. Please consult your New Home Counselor for more details. E.&O.E. November 2018. Copyright 2018 - Mattamy Homes Limited. Builder License # CGC1524054.

ORAL REPRESENTATIONS CANNOT BE RELIED UPON AS CORRECTLY STATING REPRESENTATIONS OF THE DEVELOPER. FOR CORRECT REPRESENTATIONS, MAKE REFERENCE TO THIS BROCHURE AND TO THE DOCUMENTS REQUIRED BY SECTION 718.503, FLORIDA STATUTES, TO BE FURNISHED BY A DEVELOPER TO A BUYER OR LESSEE.



Seabright - Second Floor



Selected Options: Owner's Bath w/ Optional Super Shower

All renderings and graphics are artist's concept only for illustration, and are not part of a legal document. Mattamy reserves the right to make changes to these floorplans, specifications, dimensions and elevations without prior notice. These floor plans, room dimensions and exterior foot prints only apply to elevation "Craftsman" as far as listed base price and specifications. Note that plan square footages and room dimensions may vary according to elevation and options selected. Plan may be built as the mirror image. Flooring illustrations are used to show area of flooring, actual flooring type is specified on the Community Feature Sheet. Please consult your New Home Counselor for more details. E.&O.E. November 2018. Copyright 2018 - Mattamy Homes Limited. Builder License # CGC1524054.

ORAL REPRESENTATIONS CANNOT BE RELIED UPON AS CORRECTLY STATING REPRESENTATIONS OF THE DEVELOPER. FOR CORRECT REPRESENTATIONS, MAKE REFERENCE TO THIS BROCHURE AND TO THE DOCUMENTS REQUIRED BY SECTION 718.503, FLORIDA STATUTES, TO BE FURNISHED BY A DEVELOPER TO A BUYER OR LESSEE.



Seabright



Elevation Coastal



Elevation Craftsman



Elevation West Indies

All renderings and graphics are artist's concept only for illustration, and are not part of a legal document. Mattamy reserves the right to make changes to these floorplans, specifications, dimensions and elevations without prior notice. These floor plans, room dimensions and exterior foot prints only apply to elevation "Craftsman" as far as listed base price and specifications. Note that plan square footages and room dimensions may vary according to elevation and options selected. Plan may be built as the mirror image. Flooring illustrations are used to show area of flooring, actual flooring type is specified on the Community Feature Sheet. Please consult your New Home Counselor for more details. E.&O.E. November 2018. Copyright 2018 - Mattamy Homes Limited. Builder License # CGC1524054.

ORAL REPRESENTATIONS CANNOT BE RELIED UPON AS CORRECTLY STATING REPRESENTATIONS OF THE DEVELOPER. FOR CORRECT REPRESENTATIONS, MAKE REFERENCE TO THIS BROCHURE AND TO THE DOCUMENTS REQUIRED BY SECTION 718.503, FLORIDA STATUTES, TO BE FURNISHED BY A DEVELOPER TO A BUYER OR LESSEE.