

ELLE
RESIDENCES
MIAMI

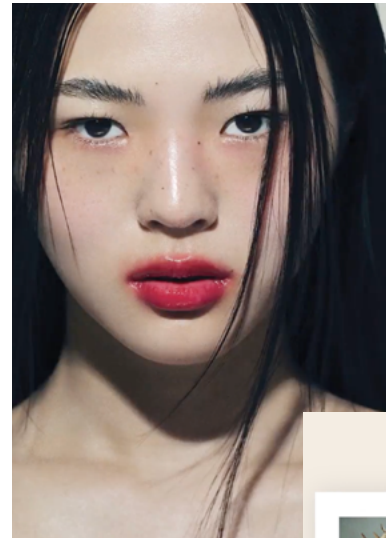


Reside in Style

UNE 05

DEVOTED TO A LIFE OF STYLE

Now you can live the five pillars of **ELLE** every day in the brand's first immersive residential experience.



2 BEAUTY



Meet ELLE's 2023 Women in Hollywood



3 SOCIETY



1 FASHION

4 CULTURE



5 LIFESTYLE

THE RESIDENCES

Live in high style in Edgewater, on the runway to Miami's design, fashion and cultural districts.

ELLE Residences, inspired by 80 years of trendsetting fashion and decor – fully finished, perfectly furnished and ready-to-live.

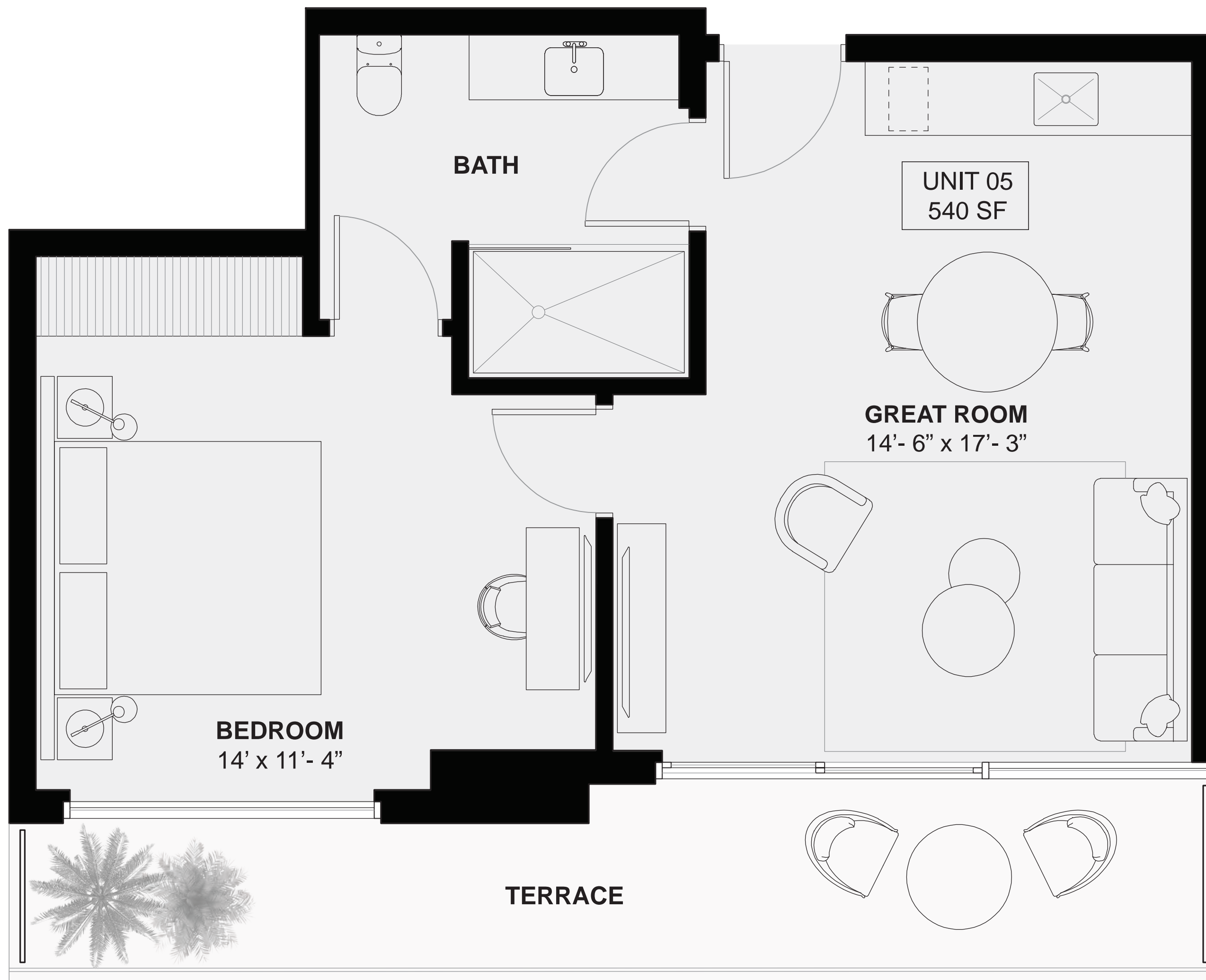
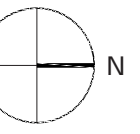
Inspired by the pages of ELLE Decor, the Residences blend mid-century modern and contemporary French chic with a splash of tropical luxury, for a new twist on Miami living.

FEATURES

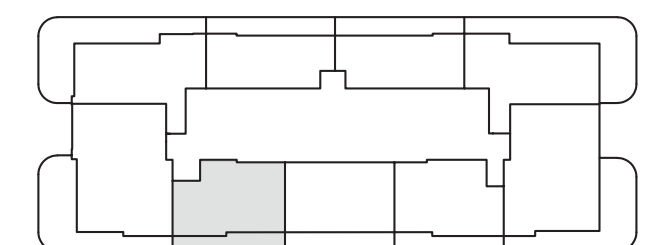
- Thoughtful floor plans with high ceilings, water & skyline views*
- Top-floor Grande Suites with 11-foot ceilings*
- Floor-to-ceiling impact windows & doors*
- Sleek kitchens with Miele kitchen appliance suite*
- Imported Italian cabinetry & woodwork by Italkraft*
- Exquisite quartz countertops*
- French-inspired chevron pattern wood flooring*
- Modern brass fixtures & finishings*
- Smart climate control systems*
- High-efficiency washer/dryer*
- Built-in closets*
- Option to use flexible rental platforms or use a fully managed rental program*



Pied-A-Terre



RESIDENCE 05 *SOUTH EAST*



1 Bedroom, 1 Bathroom

Interior 540 SF / 50 M2

Terrace

5th, 6th and 25th Floors 135 SF / 13 M2

7th - 24th Floors 157 SF / 15 M2

TOTAL

5, 6th and 25th Floors 665 SF / 62 M2

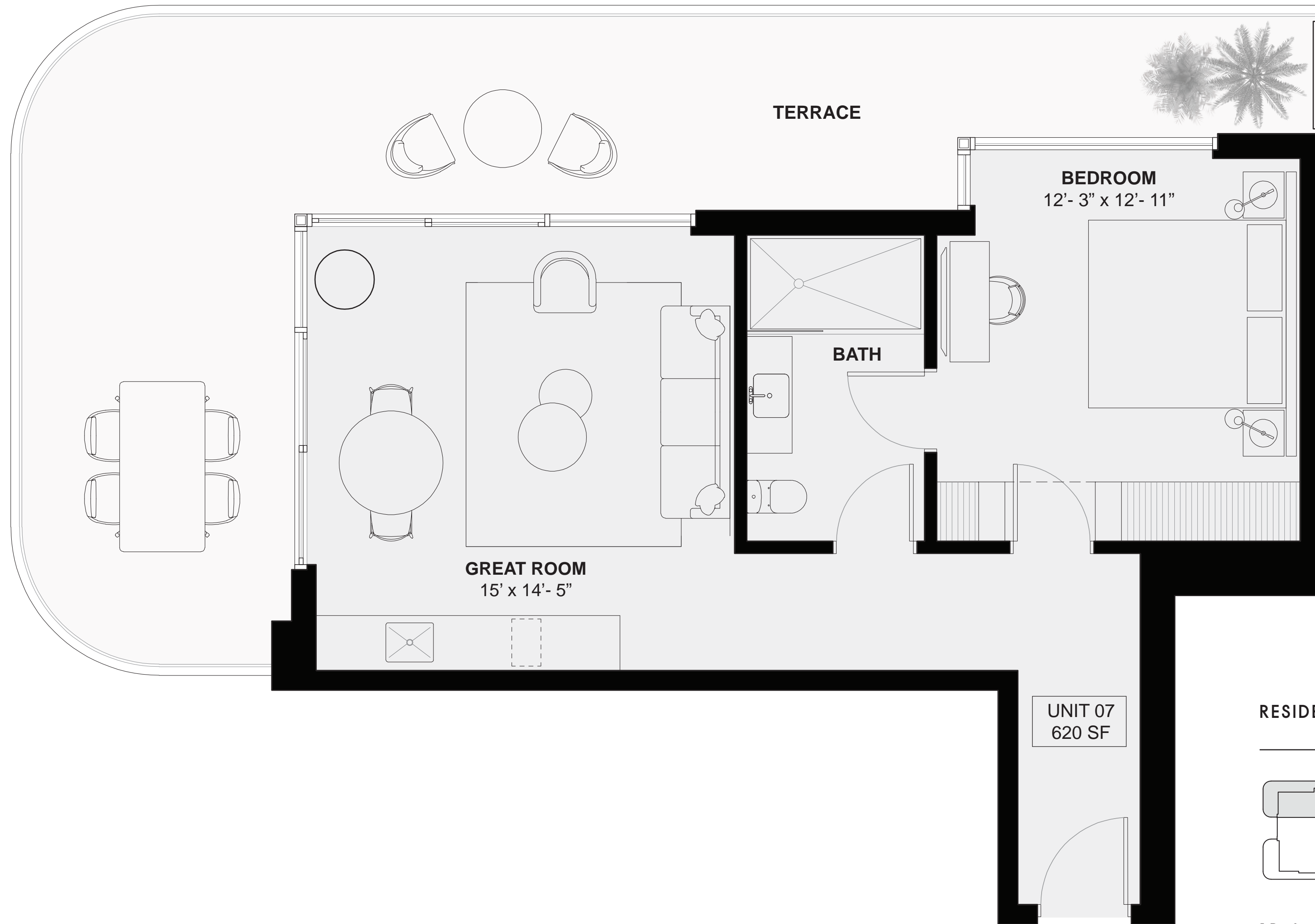
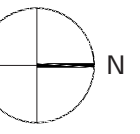
7th - 24th Floors 677 SF / 63 M2

ELLE
RESIDENCES
MIAMI

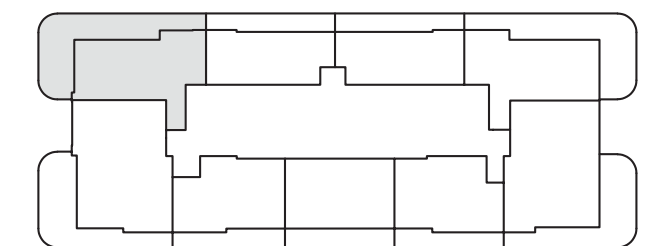


Reside in Style

UNE 07



RESIDENCE 07 *SOUTH WEST*



1 Bedroom, 1 Bathroom

Interior 620 SF / 58 M2

Terrace

5th, 6th and 25th Floors 415 SF / 38 M2

7th - 24th Floors 360 SF / 33 M2

TOTAL

5, 6th and 25th Floors 675 SF / 64 M2

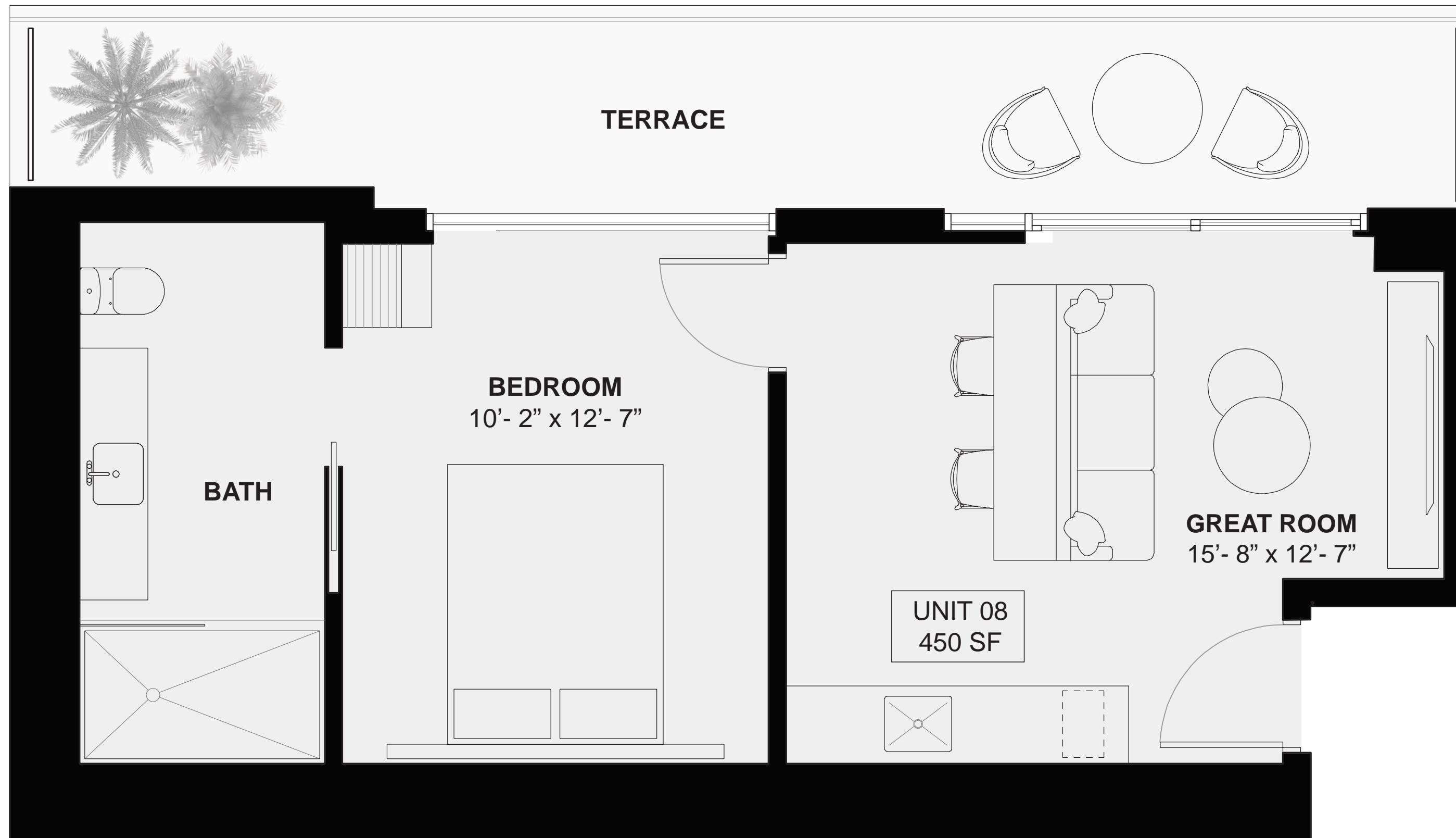
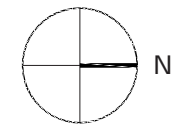
7th - 24th Floors 697 SF / 66 M2

ELLE
RESIDENCES
MIAMI

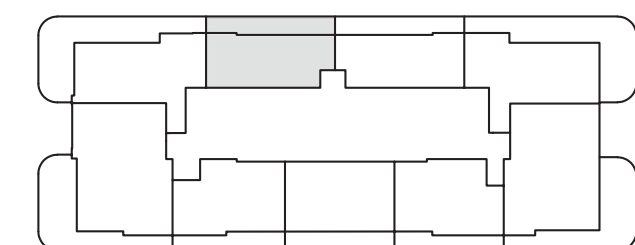


Reside in Style

UNE 08



RESIDENCE 08 WEST



1 Bedroom, 1 Bathroom

Interior 450 SF / 42 M2

Terrace

5th, 6th and 25th Floors 160 SF / 15 M2

7th - 24th Floors 170 SF / 16 M2

TOTAL

5, 6th and 25th Floors 610 SF / 57 M2

7th - 24th Floors 620 SF / 58 M2

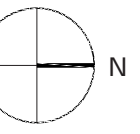
UNE 08

ELLE
RESIDENCES
MIAMI

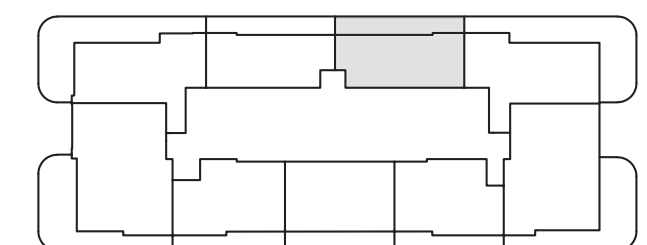


Reside in Style

UNE 09



RESIDENCE 09 WEST



1 Bedroom, 1 Bathroom

Interior 450 SF / 42 M2

Terrace

5th, 6th and 25th Floors 160 SF / 15 M2

7th - 24th Floors 170 SF / 16 M2

TOTAL

5, 6th and 25th Floors 610 SF / 57 M2

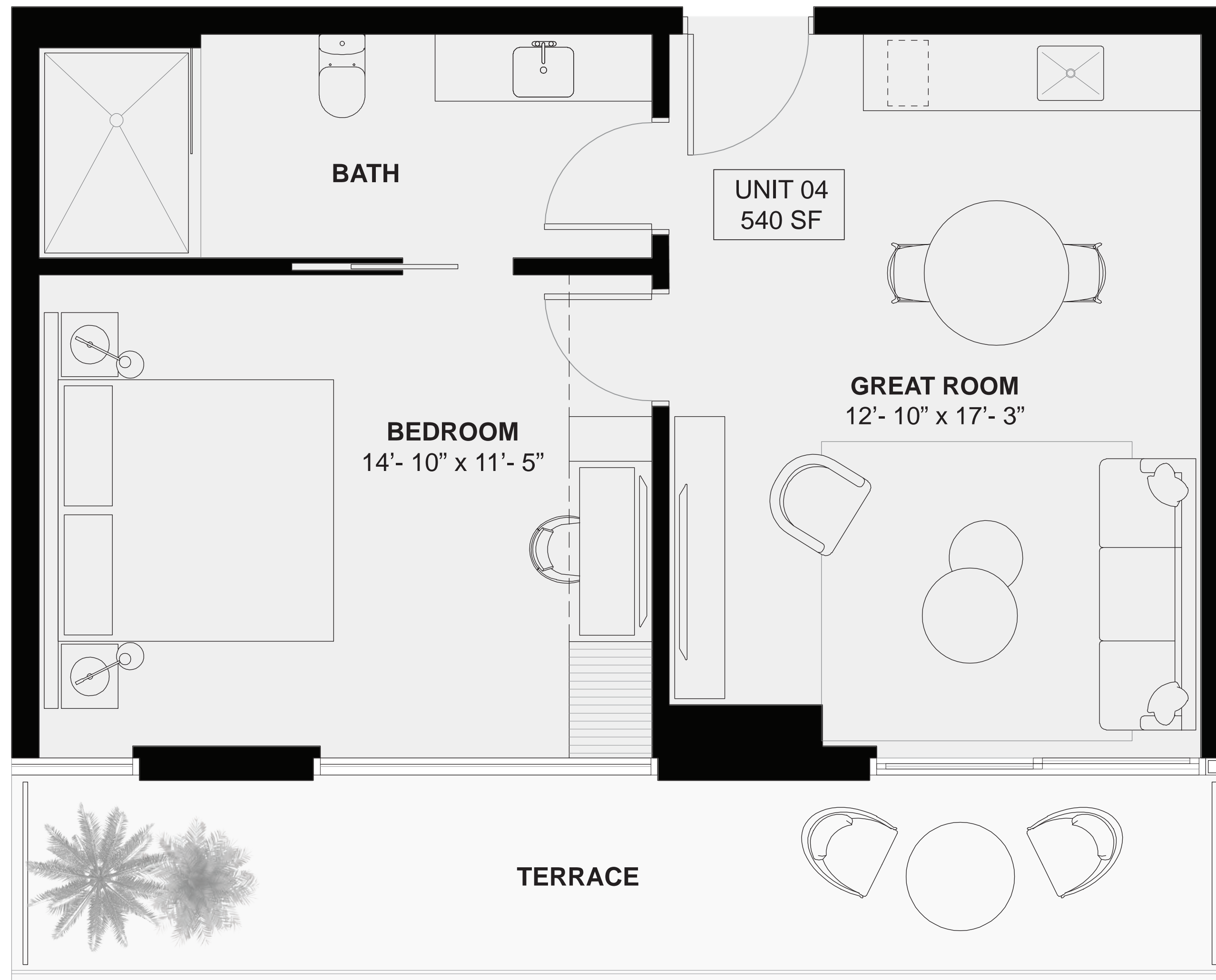
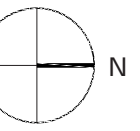
7th - 24th Floors 620 SF / 58 M2

ELLE
RESIDENCES
MIAMI

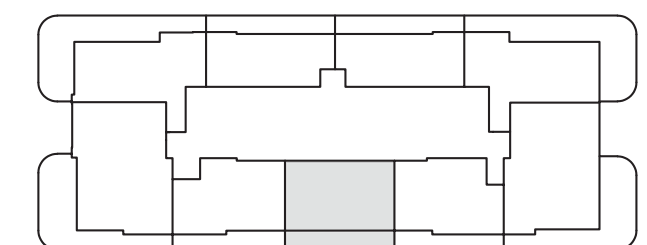


Reside in Style

UNE 04



RESIDENCE 04 EAST



1 Bedroom, 1 Bathroom

Interior 540 SF / 50 M2

Terrace

5th, 6th and 25th Floors 125 SF / 12 M2

7th - 24th Floors 127 SF / 12 M2

TOTAL

5, 6th and 25th Floors 665 SF / 62 M2

7th - 24th Floors 667 SF / 63 M2

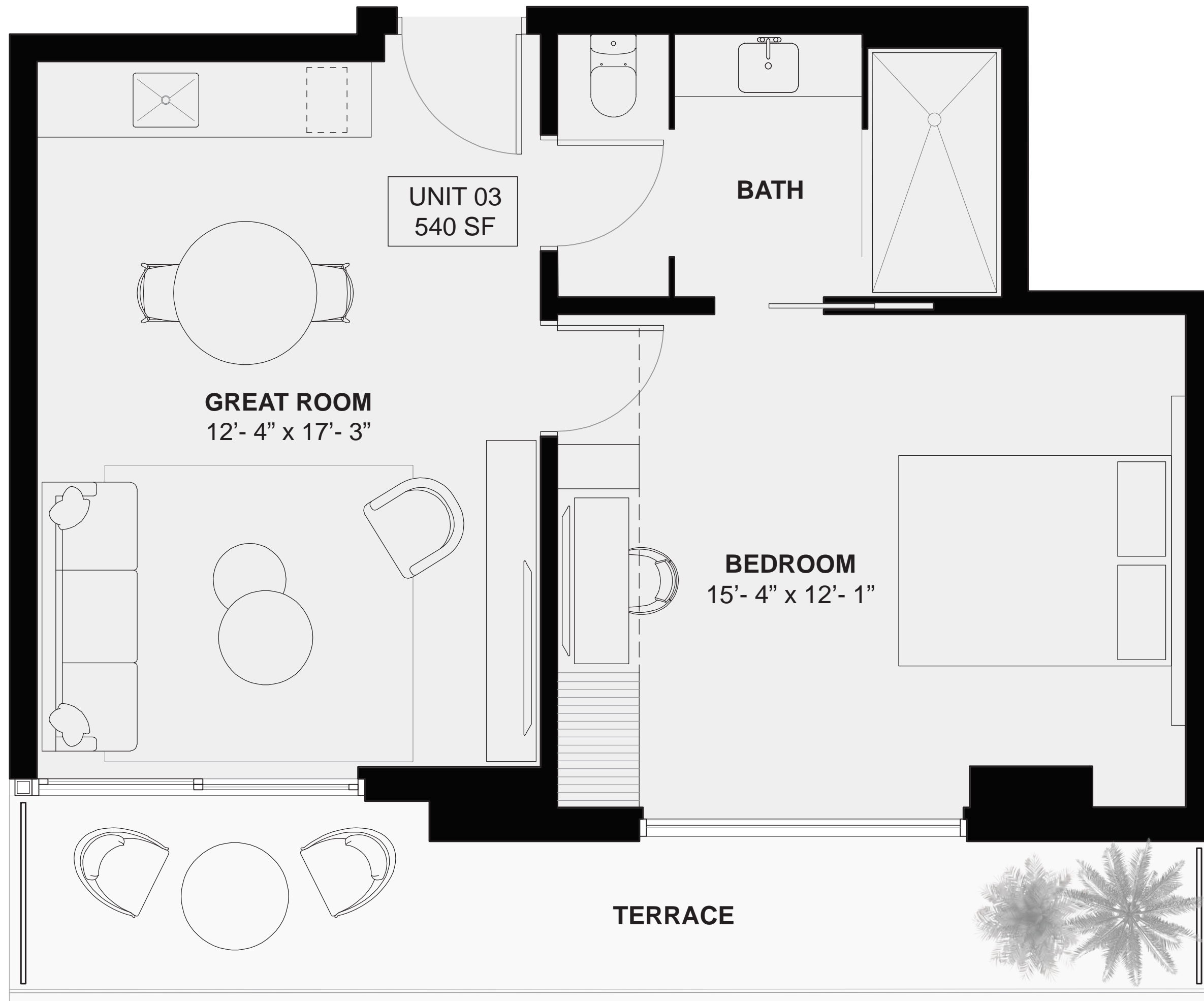
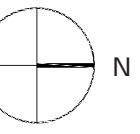
UNE 04

ELLE
RESIDENCES
MIAMI

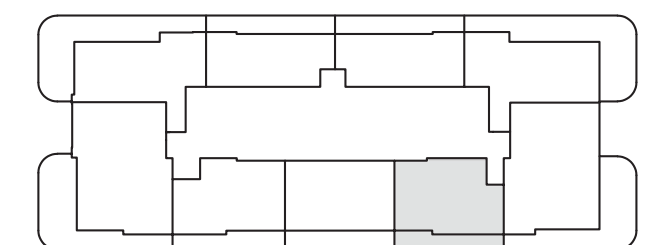


Reside in Style

UNE 03



RESIDENCE 03 *NORTH EAST*



1 Bedroom, 1 Bathroom

Interior 540 SF / 50 M2

Terrace

5th, 6th and 25th Floors 125 SF / 12 M2

7th - 24th Floors 127 SF / 12 M2

TOTAL

5, 6th and 25th Floors 665 SF / 62 M2

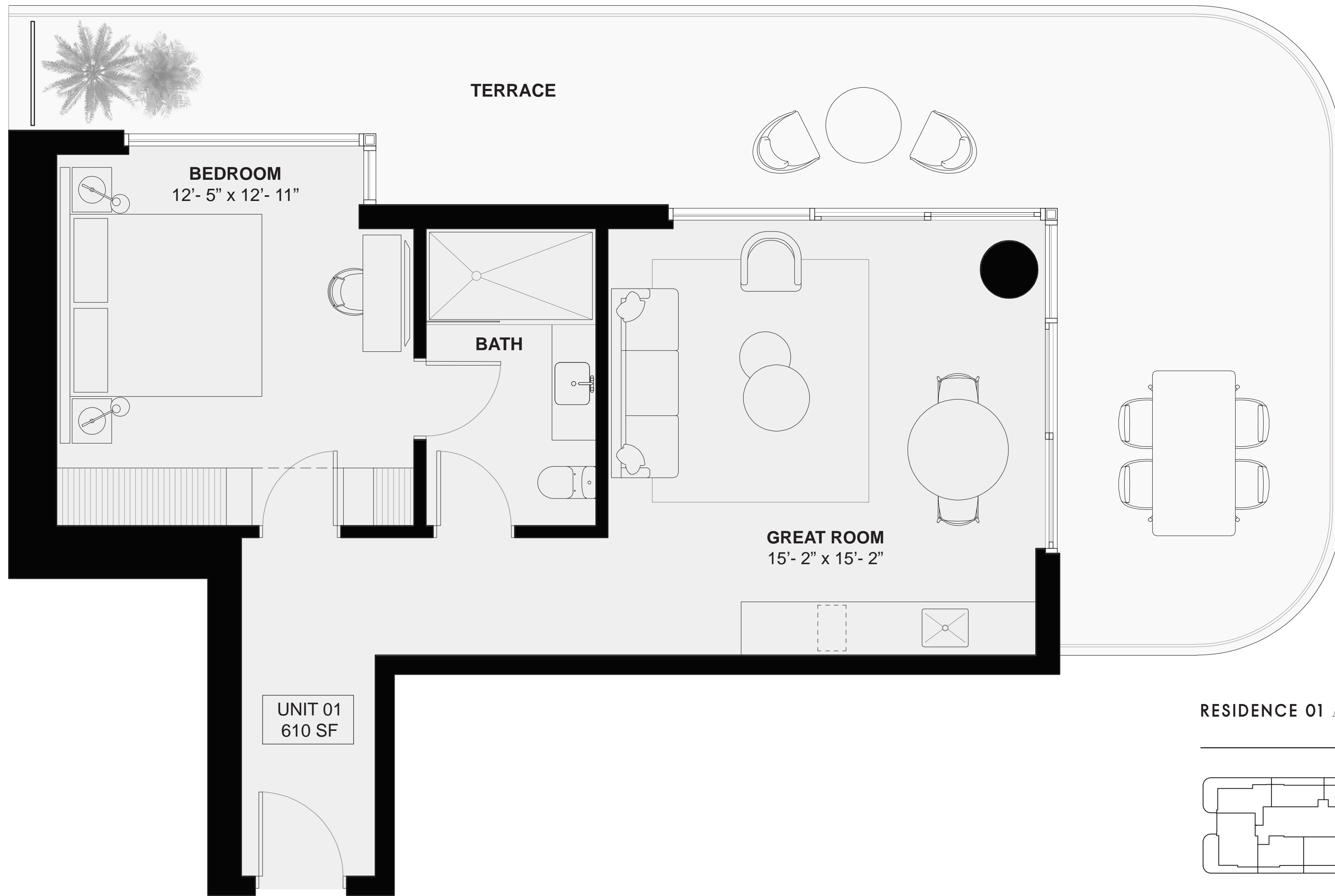
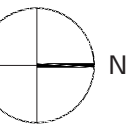
7th - 24th Floors 667 SF / 62 M2

ELLE
RESIDENCES
MIAMI

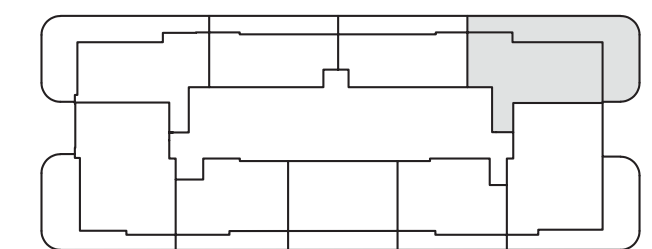


Reside in Style

UNE 01



RESIDENCE 01 *NORTH WEST*



1 Bedroom, 1 Bathroom

Interior 610 SF / 57 M²

Terrace

5th, 6th and 25th Floors 415 SF / 38 M²

7th - 24th Floors 360 SF / 33 M²

TOTAL

5, 6th and 25th Floors 1,035 SF / 97 M²

7th - 24th Floors 985 SF / 92 M²

ELLE RESIDENCES MIAMI

Pictured on Cover, Bishop Stool by designer India Mahdavi



"WE ARE PLEDGED TO THE LETTER AND SPIRIT OF THE U.S. POLICY FOR ACHIEVEMENT OF EQUAL HOUSING OPPORTUNITY THROUGHOUT THE NATION. WE ENCOURAGE AND SUPPORT AN AFFIRMATIVE ADVERTISING AND MARKETING PROGRAM IN WHICH THERE ARE NO BARRIERS TO OBTAINING HOUSING BECAUSE OF RACE, COLOR, RELIGION, SEX, HANDICAP, FAMILIAL STATUS OR NATIONAL ORIGIN."

This advertisement is not an offering. Oral representations cannot be relied upon as correctly stating representations of the developer. For correct representations, make reference to the documents required by section 718.503, Florida statutes, to be furnished by a developer to a buyer or lessee. The artist representations and interior decorations, finishes, appliances and furnishings are provided for illustrative purposes only. Developer makes no representations or warranties except as may be set forth in the offering plan. Developer reserves the right to substitute materials, appliances, equipment, fixtures and other construction and design details specified herein with similar materials, appliances, equipment and/or fixtures of substantially equal or better quality. All dimensions are approximate and subject to normal construction variances and tolerances. Square footage exceeds the usable floor area. Developer reserves the right to make changes in accordance with the terms of the offering plan. Plans and dimensions may contain minor variations from floor to floor."

"These drawings are conceptual only and are for the convenience of reference. They should not be relied upon as representations, express or implied, of the final detail of the residences. Units shown are examples of unit types and may not depict actual units. Stated square footages are ranges for a particular unit type and are measured to the exterior boundaries of the exterior walls and the centerline of interior demising walls and in fact vary from the area that would be determined by using the description and definition of the "Unit" set forth in the Declaration (which generally only includes the interior airspace between the perimeter walls and excludes interior structural components). All depictions of appliances, plumbing fixtures, equipment, counters, soffits, floor coverings and other matters of detail are conceptual only and are not necessarily included in each Unit. Consult your Agreement and the Prospectus for the items included with the Unit. Dimensions and square footage are approximate, will vary with specific unit type, and may vary with actual construction. Additionally, measurements of rooms set forth on any floor plan are nominal and generally taken at the greatest points of each given room (as if the room were a perfect rectangle), without regard for any cutouts. Unit orientation and windows (including number, size, orientation and awnings), balcony/lanais (including configuration, size and railing/balustrade), structure and mechanical chases may vary. The developer expressly reserves the right to make modifications, revisions, and changes it deems desirable in its sole and absolute discretion and without notice."



UNCG

URBAN NETWORK CAPITAL GROUP



VERTICAL
DEVELOPMENTS

V&V GROUP