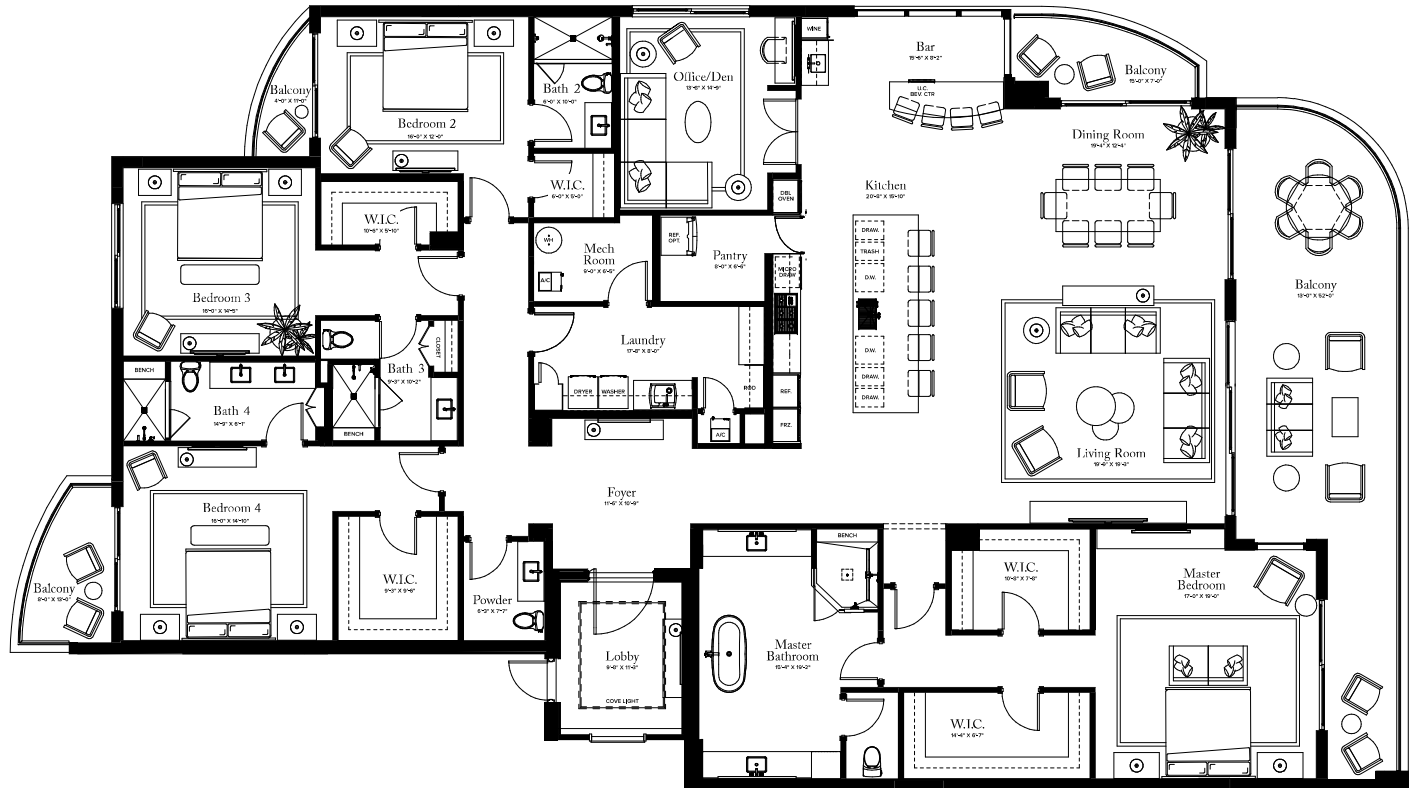




# THE RITZ-CARLTON RESIDENCES

PALM BEACH GARDENS



## THE ESTATE COLLECTION RESIDENCE 01

FLOORS 1-6

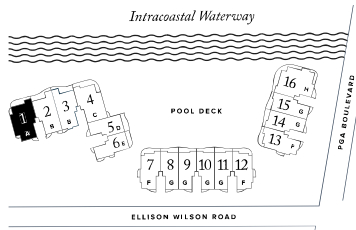
### PLAN A

4 BEDROOMS / 4.5 BATHROOMS  
OFFICE/DEN

INTERIOR: 4,575 SQ FT

EXTERIOR: 740 SQ FT

TOTAL: 5,315 SQ FT



THE RITZ-CARLTON RESIDENCES, PALM BEACH GARDENS ARE NOT OWNED, DEVELOPED OR SOLD BY MARRIOTT INTERNATIONAL, INC. OR ITS AFFILIATES ("MARRIOTT"). DMH RESIDENTIAL INVESTMENT, LLC USES THE RITZ-CARLTON MARKS UNDER A LICENSE FROM MARRIOTT, WHICH HAS NOT CONFIRMED THE ACCURACY OF ANY STATEMENTS OR REPRESENTATIONS MADE ABOUT THE PROJECT.

**DISCLAIMER:** GENERAL REPRESENTATIONS CANNOT BE RELIED UPON AS CORRECTLY STATING THE REPRESENTATIONS OF THE DEVELOPER. FOR CORRECT REPRESENTATIONS, MAKE REFERENCE TO THIS BROCHURE AND TO THE DOCUMENTS REQUIRED BY SECTION 718.04, FLORIDA STATUTES, TO BE FURNISHED BY A DEVELOPER TO A BUYER OR LESSEE. THIS OFFERING IS MADE ONLY BY THE PROSPECTUS FOR THE CONDOMINIUM AND NO STATEMENT SHOULD BE RELIED UPON IF NOT MADE IN THE PROSPECTUS. THIS IS NOT AN OFFER TO SELL, OR SOLICITATION OF OFFERS TO BUY, THE CONDOMINIUM UNITS IN STATES WHERE SUCH OFFER OR SOLICITATION CANNOT BE MADE. PRICES, PLANS AND SPECIFICATIONS ARE SUBJECT TO CHANGE WITHOUT NOTICE. ALL DIMENSIONS ARE APPROXIMATE AND SUBJECT TO CHANGE IN ACCORDANCE WITH THE AGREEMENT FOR SALE. Stated dimensions are measured to the exterior boundaries of the exterior walls and the centerline of interior dividing walls and in fact vary from the dimensions that would be determined by using the description and definition of the "Unit" set forth in the Declaration, which generally only includes the interior airspace between the perimeter walls and excludes interior structural components. Additionally, measurements of rooms set forth on any floor plan are generally taken at the greatest points of each given room (as if the room were a perfect rectangle), without regard for any cutouts. Accordingly, the area of the actual room will typically be smaller than the product obtained by multiplying the stated length times width. All dimensions are approximate, and all floor plans and development plans are subject to change. Nothing herein shall constitute an offer to sell, or a solicitation of offers to buy, or state in which such offers or solicitations cannot be made. The sketches, renderings, graphic materials, plans, specifications, terms, conditions and statements contained in this brochure are proposed only and the Developer reserves the right to modify, revise or withdraw any or all of same in its sole discretion and without prior notice. All improvements, design and construction are subject to first obtaining the appropriate federal, state and local permits and approvals for same. These drawings are conceptual only and are for the convenience of reference. They should not be relied upon as representations, express or implied, of the final detail of the residences. The developer expressly reserves the right to make modifications, revisions, and changes it deems desirable in its sole and absolute discretion. All depictions of appliances, counters, soffits, floor coverings and other matters of detail are conceptual only and are not necessarily included in each Unit. Dimensions and square footage are approximate and may vary with actual construction. All fixtures and items of finish and decoration are for display only and are not to be included with the unit. Consult the prospectus for a description of those features which are to be included in the units. The features, plans and specifications described above are proposed only, and the Developer reserves the right to modify, revise or withdraw any or all of same in its sole discretion and without prior notice. Without limiting the generality of the foregoing, Developer reserves the right to substitute any of the foregoing with items of similar or better value, in Developer's opinion. The photographs contained in this brochure have been taken off-site and are merely intended as illustrations of the activities and concepts depicted therein.

