



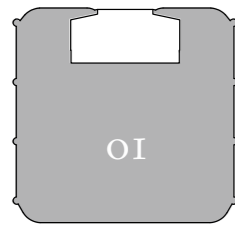
ST REGIS
SUNNY ISLES BEACH ♦ MIAMI
THE RESIDENCES

Collins Ave / A1A

Residence 01

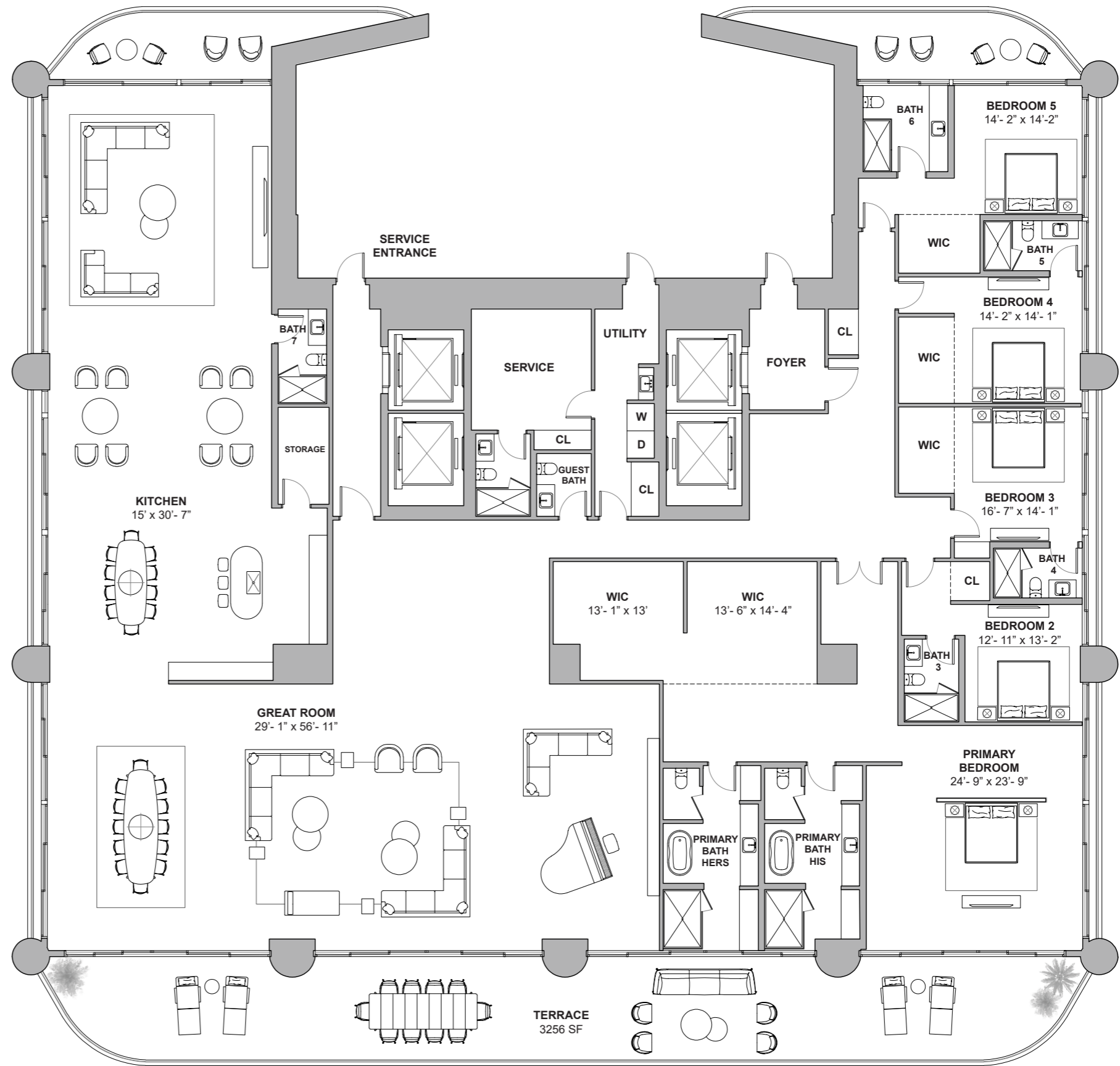
North Tower / Level 58

5 BEDROOMS | 8.5 BATHROOMS
STAFF QUARTERS
8,218 SF / 763 SM INTERIOR
3,256 SF / 302 SM EXTERIOR
11,474 SF / 1,066 SM TOTAL



Atlantic Ocean

18801 Collins Ave, Sunny Isles Beach, FL 33160



DEVELOPMENT AND SALES
FORTUNE INTERNATIONAL GROUP | **CHÂTEAU GROUP**

The St. Regis Residences, Sunny Isles Beach are not owned, developed or sold by Marriott International, Inc. or its affiliates ("MI"). La Playa Beach Associates, LLC uses the St. Regis marks under a license from MI, which has not confirmed the accuracy of any of the statements or representations made herein. This project is being developed by La Playa Beach Associates, LLC, which has the right to use the trademark names and logos of Fortune International Group and Chateau Group. ORAL REPRESENTATIONS CANNOT BE RELIED UPON AS CORRECTLY STATING THE REPRESENTATIONS OF THE DEVELOPER. FOR CORRECT REPRESENTATIONS, MAKE REFERENCE TO THIS BROCHURE AND TO THE DOCUMENTS REQUIRED BY SECTION 718.503, FLORIDA STATUTES, TO BE FURNISHED BY A DEVELOPER TO A BUYER OR LESSEE. This is not intended to be an offer to sell, or solicitation to buy, condominium units to residents of any jurisdiction where prohibited by law, and your eligibility for purchase will depend upon your state of residency. Stated dimensions are measured to the exterior boundaries of the exterior walls and the centerline of interior demising walls and in fact vary from the dimensions that would be determined by using the description and definition of the "Unit" set forth in the Declaration (which generally only includes the interior airspace between the perimeter walls and excludes interior structural components). For your reference, the area of the Unit, determined in accordance with those defined unit boundaries, is set forth on Exhibit "3" to the Declaration. Note that measurements of rooms set forth on this floor plan are generally taken at the greatest points of each given room (as if the room were a perfect rectangle), without regard for any cutouts. Accordingly, the area of the actual room will typically be smaller than the product obtained by multiplying the stated length times width. All dimensions are approximate and may vary with actual construction, and all floor plans and development plans are subject to change. Furniture is not included with the sale of the Units.



ST REGIS
SUNNY ISLES BEACH ♦ MIAMI
THE RESIDENCES

Residence 03

North Tower / Levels 49 to 51

5 BEDROOMS

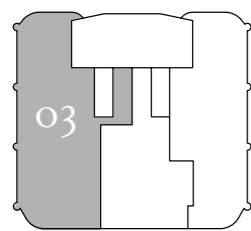
6.5 BATHROOMS

4,407 SF / 409 SM INTERIOR

719 SF / 67 SM EXTERIOR

5,125 SF / 476 SM TOTAL

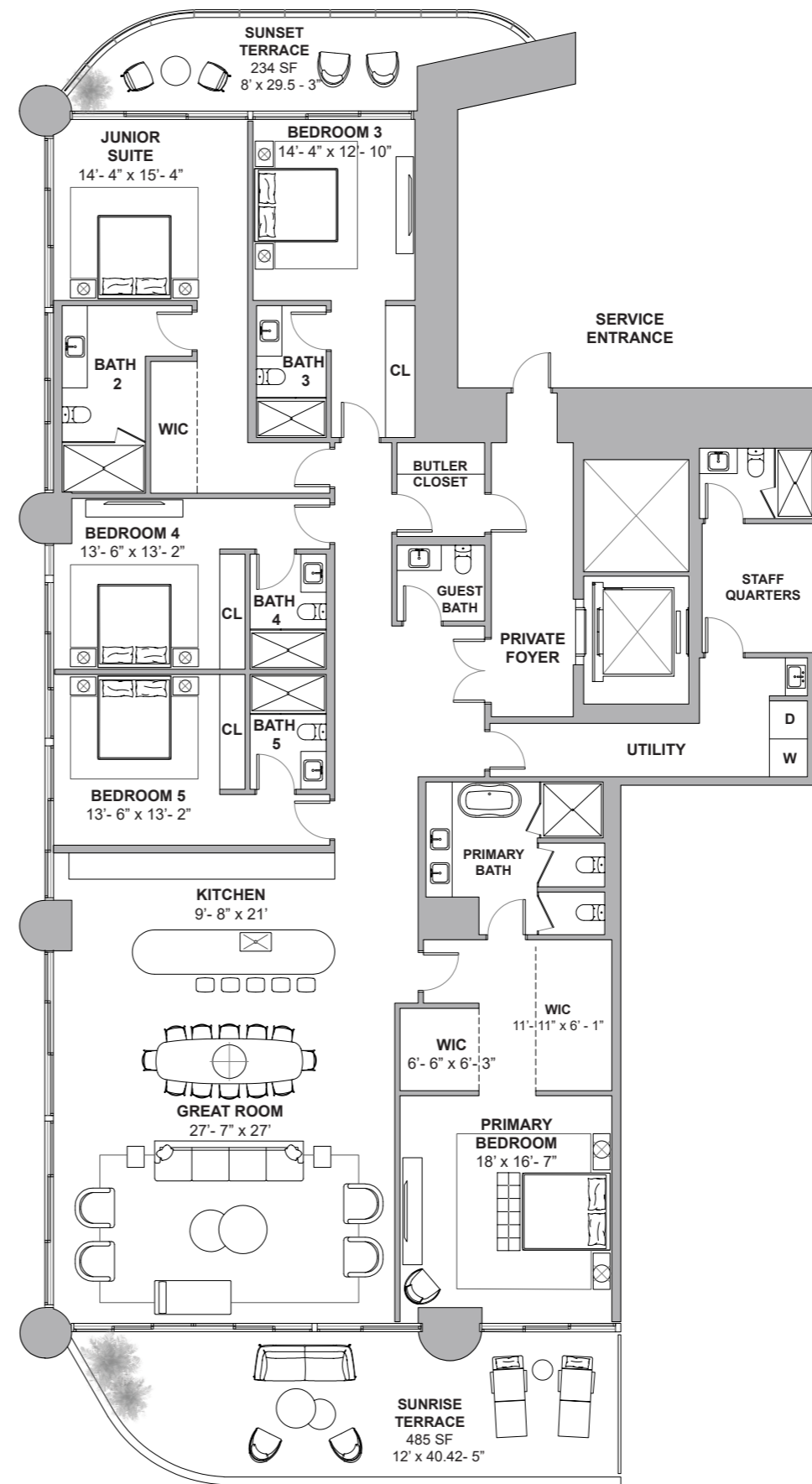
*Terraces on these levels range from 704 to 706 SF



Atlantic Ocean

18801 Collins Ave, Sunny Isles Beach, FL 33160

Collins Ave / AIA



Atlantic Ocean

DEVELOPMENT AND SALES



The St. Regis Residences, Sunny Isles Beach are not owned, developed or sold by Marriott International, Inc. or its affiliates ("MI"). La Playa Beach Associates, LLC uses the St. Regis marks under a license from MI, which has not confirmed the accuracy of any of the statements or representations made herein. This project is being developed by La Playa Beach Associates, LLC, which has the right to use the trademark names and logos of Fortune International Group and Chateau Group. ORAL REPRESENTATIONS CANNOT BE RELIED UPON AS CORRECTLY STATING THE REPRESENTATIONS OF THE DEVELOPER. FOR CORRECT REPRESENTATIONS, MAKE REFERENCE TO THIS BROCHURE AND TO THE DOCUMENTS REQUIRED BY SECTION 718.503, FLORIDA STATUTES, TO BE FURNISHED BY A DEVELOPER TO A BUYER OR LESSEE. This is not intended to be an offer to sell, or solicitation to buy, condominium units to residents of any jurisdiction where prohibited by law, and your eligibility for purchase will depend upon your state of residency. Stated dimensions are measured to the exterior boundaries of the exterior walls and the centerline of interior demising walls and in fact vary from the dimensions that would be determined by using the description and definition of the "Unit" set forth in the Declaration (which generally only includes the interior airspace between the perimeter walls and excludes interior structural components). For your reference, the area of the Unit, determined in accordance with those defined unit boundaries, is set forth on Exhibit "3" to the Declaration. Note that measurements of rooms set forth on this floor plan are generally taken at the greatest points of each given room (as if the room were a perfect rectangle), without regard for any cutouts. Accordingly, the area of the actual room will typically be smaller than the product obtained by multiplying the stated length times width. All dimensions are approximate and may vary with actual construction, and all floor plans and development plans are subject to change. Furniture is not included with the sale of the Units.



ST REGIS
SUNNY ISLES BEACH ♦ MIAMI
THE RESIDENCES

Collins Ave / AIA

Residence 01

North Tower / Level 53

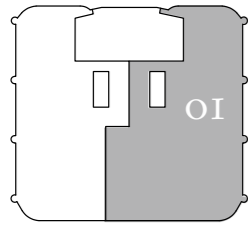
5 BEDROOMS

6.5 BATHROOMS

5,522 SF / 513 SM INTERIOR

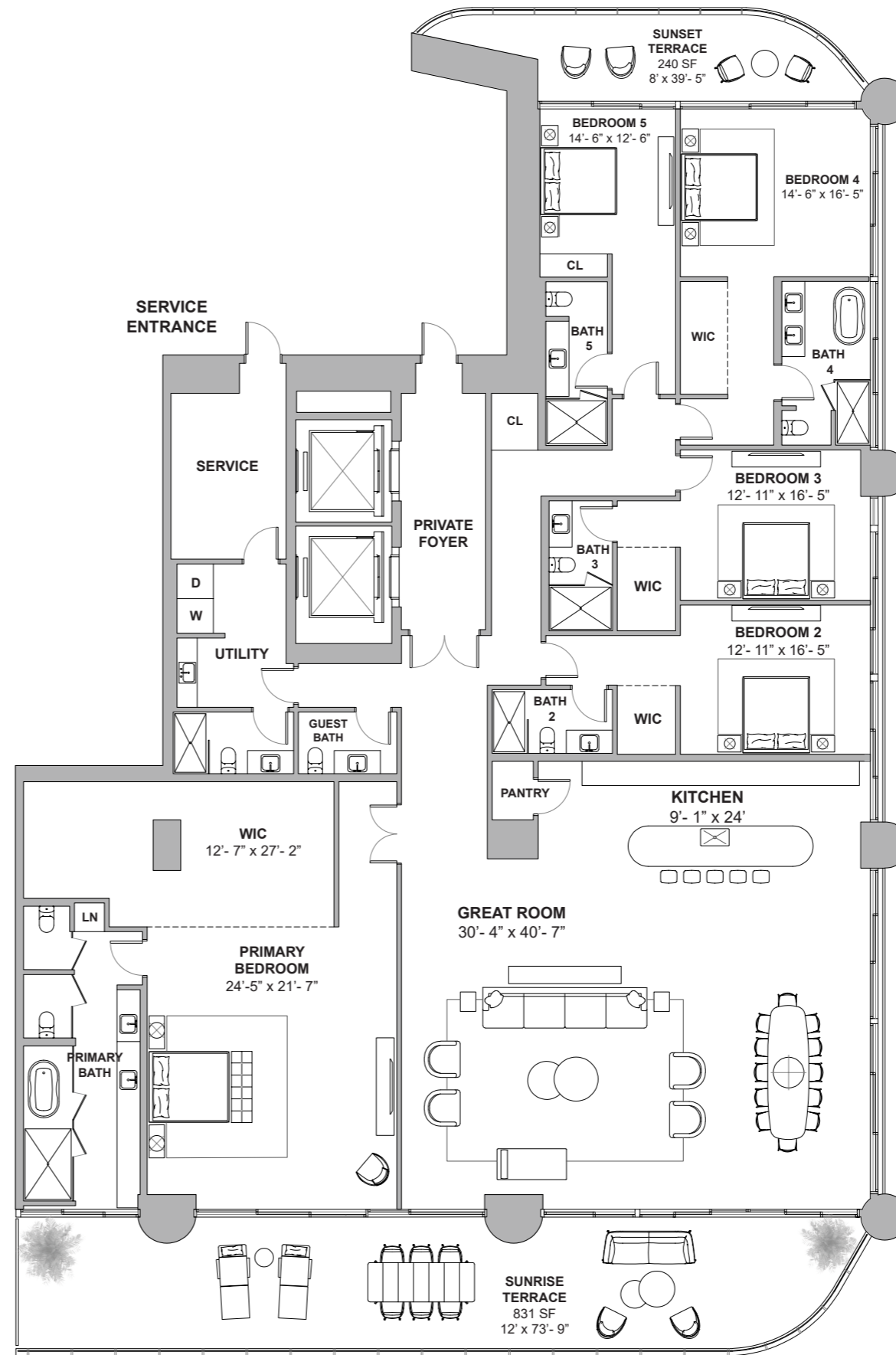
1,071 SF / 99 SM EXTERIOR

6,593 SF / 613 SM TOTAL



Atlantic Ocean

18801 Collins Ave, Sunny Isles Beach, FL 33160



Atlantic Ocean

DEVELOPMENT AND SALES

FORTUNE
INTERNATIONAL
GROUP

CHATEAU
GROUP

The St. Regis Residences, Sunny Isles Beach are not owned, developed or sold by Marriott International, Inc. or its affiliates ("MI"). La Playa Beach Associates, LLC uses the St. Regis marks under a license from MI, which has not confirmed the accuracy of any of the statements or representations made herein. This project is being developed by La Playa Beach Associates, LLC, which has the right to use the trademark names and logos of Fortune International Group and Chateau Group. ORAL REPRESENTATIONS CANNOT BE RELIED UPON AS CORRECTLY STATING THE REPRESENTATIONS OF THE DEVELOPER. FOR CORRECT REPRESENTATIONS, MAKE REFERENCE TO THIS BROCHURE AND TO THE DOCUMENTS REQUIRED BY SECTION 718.503, FLORIDA STATUTES, TO BE FURNISHED BY A DEVELOPER TO A BUYER OR LESSEE. This is not intended to be an offer to sell, or solicitation to buy, condominium units to residents of any jurisdiction where prohibited by law, and your eligibility for purchase will depend upon your state of residency. Stated dimensions are measured to the exterior boundaries of the exterior walls and the centerline of interior demising walls and in fact vary from the dimensions that would be determined by using the description and definition of the "Unit" set forth in the Declaration (which generally only includes the interior airspace between the perimeter walls and excludes interior structural components). For your reference, the area of the Unit, determined in accordance with those defined unit boundaries, is set forth on Exhibit "3" to the Declaration. Note that measurements of rooms set forth on this floor plan are generally taken at the greatest points of each given room (as if the room were a perfect rectangle), without regard for any cutouts. Accordingly, the area of the actual room will typically be smaller than the product obtained by multiplying the stated length times width. All dimensions are approximate and may vary with actual construction, and all floor plans and development plans are subject to change. Furniture is not included with the sale of the Units.



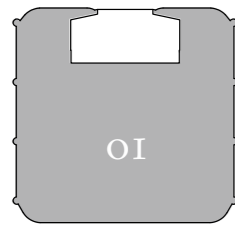
ST REGIS
SUNNY ISLES BEACH ♦ MIAMI
THE RESIDENCES

Collins Ave / A1A

Residence 01

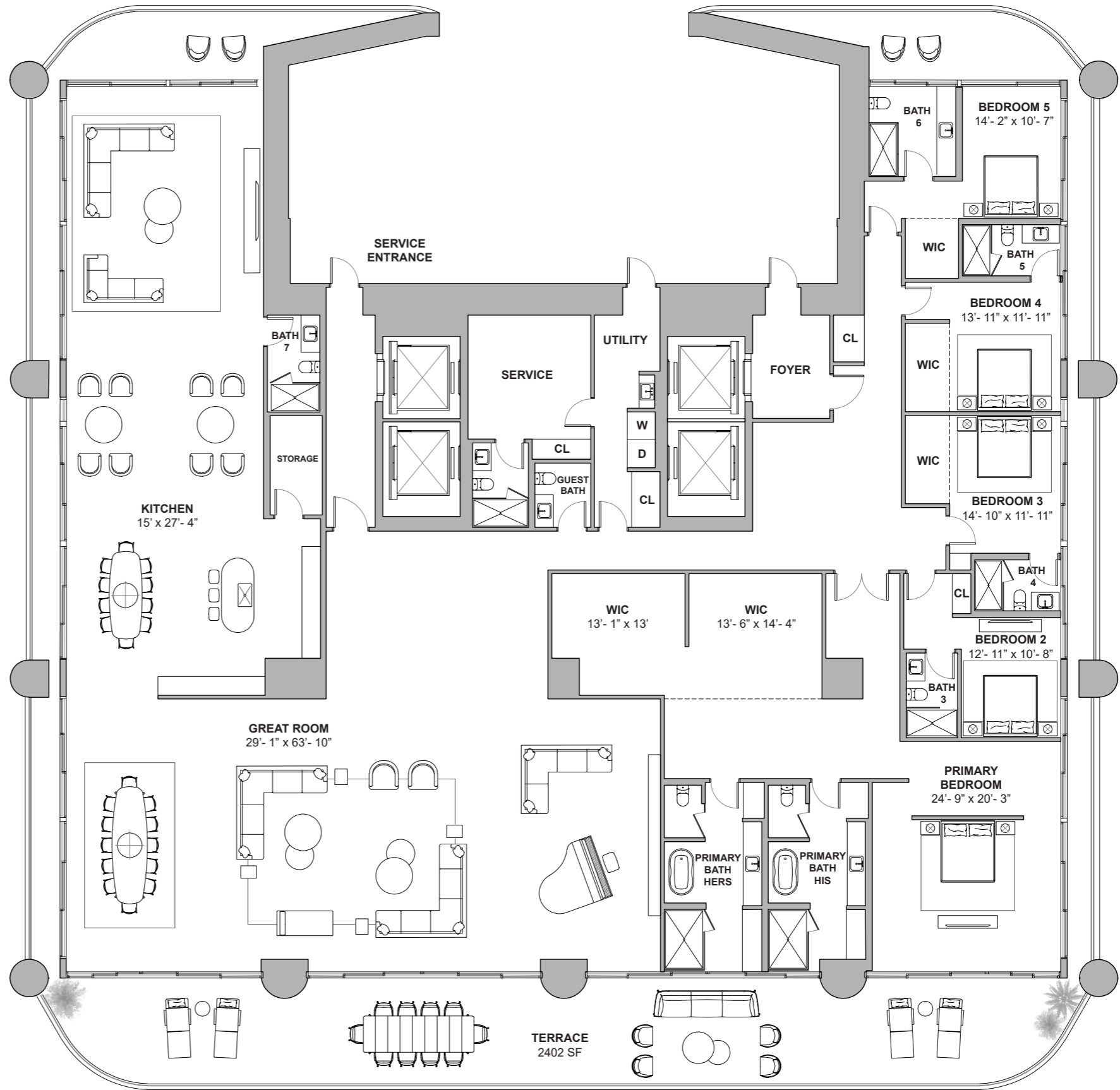
North Tower / Level 59

5 BEDROOMS | 8.5 BATHROOMS
STAFF QUARTERS
7,651 SF / 711 SM INTERIOR
5,214 SF / 484 SM EXTERIOR
12,865 SF / 1,195 SM TOTAL



Atlantic Ocean

18801 Collins Ave, Sunny Isles Beach, FL 33160



Atlantic Ocean

DEVELOPMENT AND SALES
FORTUNE INTERNATIONAL GROUP | **CHÂTEAU GROUP**

The St. Regis Residences, Sunny Isles Beach are not owned, developed or sold by Marriott International, Inc. or its affiliates ("MI"). La Playa Beach Associates, LLC uses the St. Regis marks under a license from MI, which has not confirmed the accuracy of any of the statements or representations made herein. This project is being developed by La Playa Beach Associates, LLC, which has the right to use the trademark names and logos of Fortune International Group and Chateau Group. ORAL REPRESENTATIONS CANNOT BE RELIED UPON AS CORRECTLY STATING THE REPRESENTATIONS OF THE DEVELOPER. FOR CORRECT REPRESENTATIONS, MAKE REFERENCE TO THIS BROCHURE AND TO THE DOCUMENTS REQUIRED BY SECTION 718.503, FLORIDA STATUTES, TO BE FURNISHED BY A DEVELOPER TO A BUYER OR LESSEE. This is not intended to be an offer to sell, or solicitation to buy, condominium units to residents of any jurisdiction where prohibited by law, and your eligibility for purchase will depend upon your state of residency. Stated dimensions are measured to the exterior boundaries of the exterior walls and the centerline of interior demising walls and in fact vary from the dimensions that would be determined by using the description and definition of the "Unit" set forth in the Declaration (which generally only includes the interior airspace between the perimeter walls and excludes interior structural components). For your reference, the area of the Unit, determined in accordance with those defined unit boundaries, is set forth on Exhibit "3" to the Declaration. Note that measurements of rooms set forth on this floor plan are generally taken at the greatest points of each given room (as if the room were a perfect rectangle), without regard for any cutouts. Accordingly, the area of the actual room will typically be smaller than the product obtained by multiplying the stated length times width. All dimensions are approximate and may vary with actual construction, and all floor plans and development plans are subject to change. Furniture is not included with the sale of the Units.



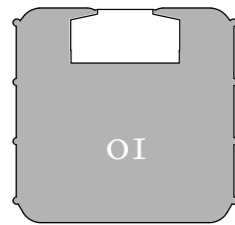
ST REGIS
SUNNY ISLES BEACH ♦ MIAMI
THE RESIDENCES

Collins Ave / AIA

Residence 01

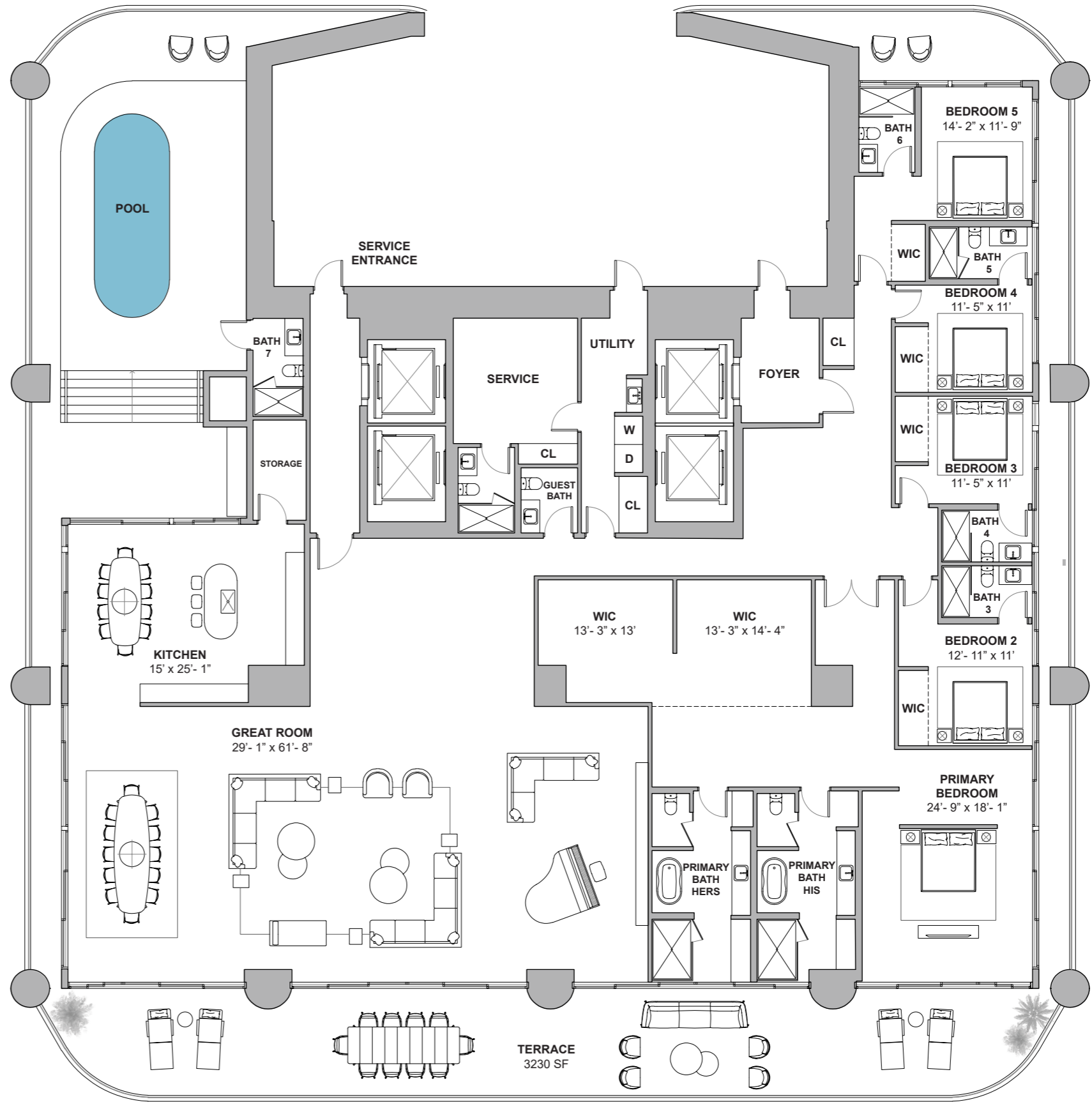
North Tower / Level 60

5 BEDROOMS | 8.5 BATHROOMS
STAFF QUARTERS | POOL
7,356 SF / 683 SM INTERIOR
3,230 SF / 300 SM EXTERIOR
10,586 SF / 983 SM TOTAL



Atlantic Ocean

18801 Collins Ave, Sunny Isles Beach, FL 33160



Atlantic Ocean

DEVELOPMENT AND SALES
FORTUNE INTERNATIONAL GROUP | **CHÂTEAU GROUP**

The St. Regis Residences, Sunny Isles Beach are not owned, developed or sold by Marriott International, Inc. or its affiliates ("MI"). La Playa Beach Associates, LLC uses the St. Regis marks under a license from MI, which has not confirmed the accuracy of any of the statements or representations made herein. This project is being developed by La Playa Beach Associates, LLC, which has the right to use the trademark names and logos of Fortune International Group and Chateau Group. ORAL REPRESENTATIONS CANNOT BE RELIED UPON AS CORRECTLY STATING THE REPRESENTATIONS OF THE DEVELOPER. FOR CORRECT REPRESENTATIONS, MAKE REFERENCE TO THIS BROCHURE AND TO THE DOCUMENTS REQUIRED BY SECTION 718.503, FLORIDA STATUTES, TO BE FURNISHED BY A DEVELOPER TO A BUYER OR LESSEE. This is not intended to be an offer to sell, or solicitation to buy, condominium units to residents of any jurisdiction where prohibited by law, and your eligibility for purchase will depend upon your state of residency. Stated dimensions are measured to the exterior boundaries of the exterior walls and the centerline of interior demising walls and in fact vary from the dimensions that would be determined by using the description and definition of the "Unit" set forth in the Declaration (which generally only includes the interior airspace between the perimeter walls and excludes interior structural components). For your reference, the area of the Unit, determined in accordance with those defined unit boundaries, is set forth on Exhibit "3" to the Declaration. Note that measurements of rooms set forth on this floor plan are generally taken at the greatest points of each given room (as if the room were a perfect rectangle), without regard for any cutouts. Accordingly, the area of the actual room will typically be smaller than the product obtained by multiplying the stated length times width. All dimensions are approximate and may vary with actual construction, and all floor plans and development plans are subject to change. Furniture is not included with the sale of the Units.



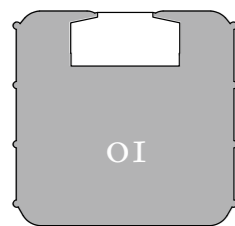
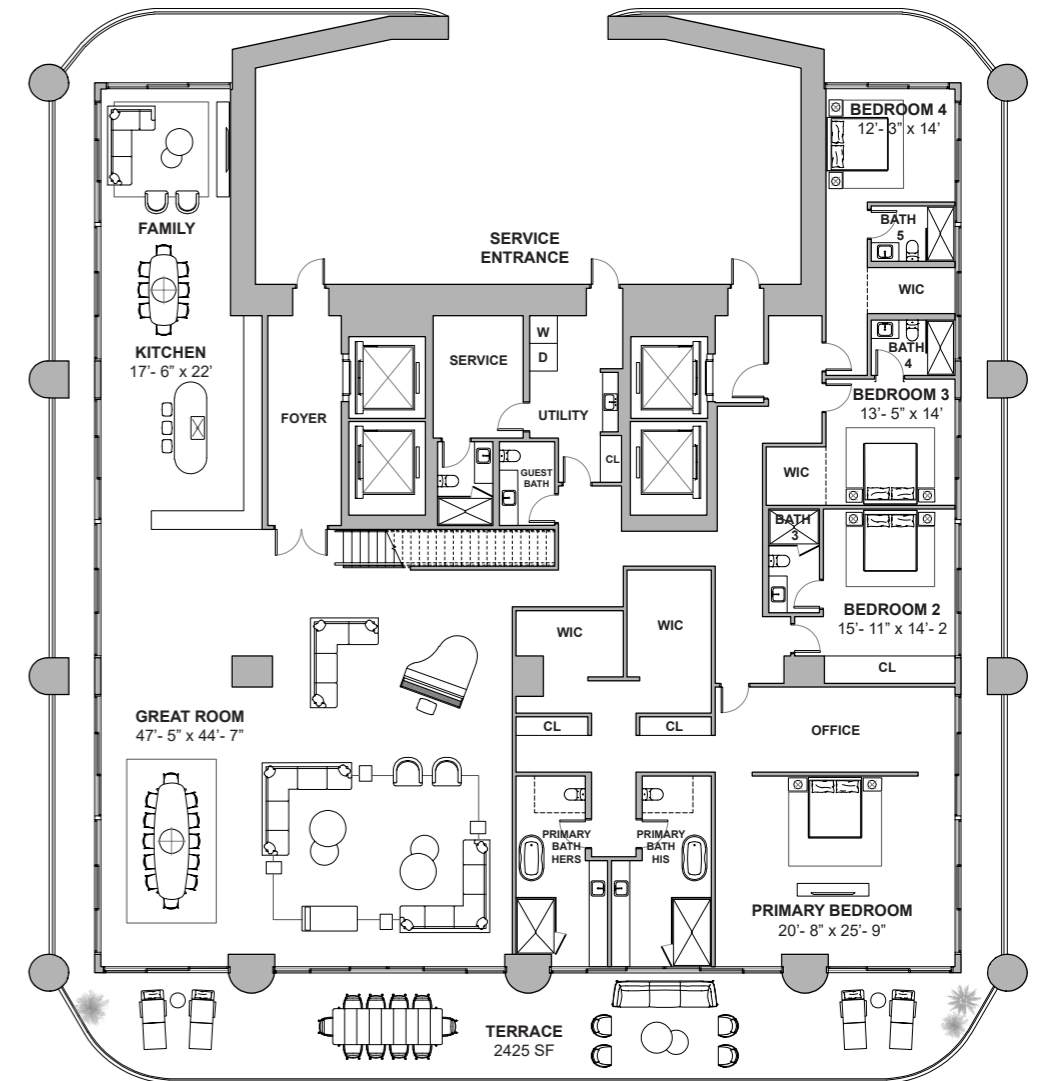
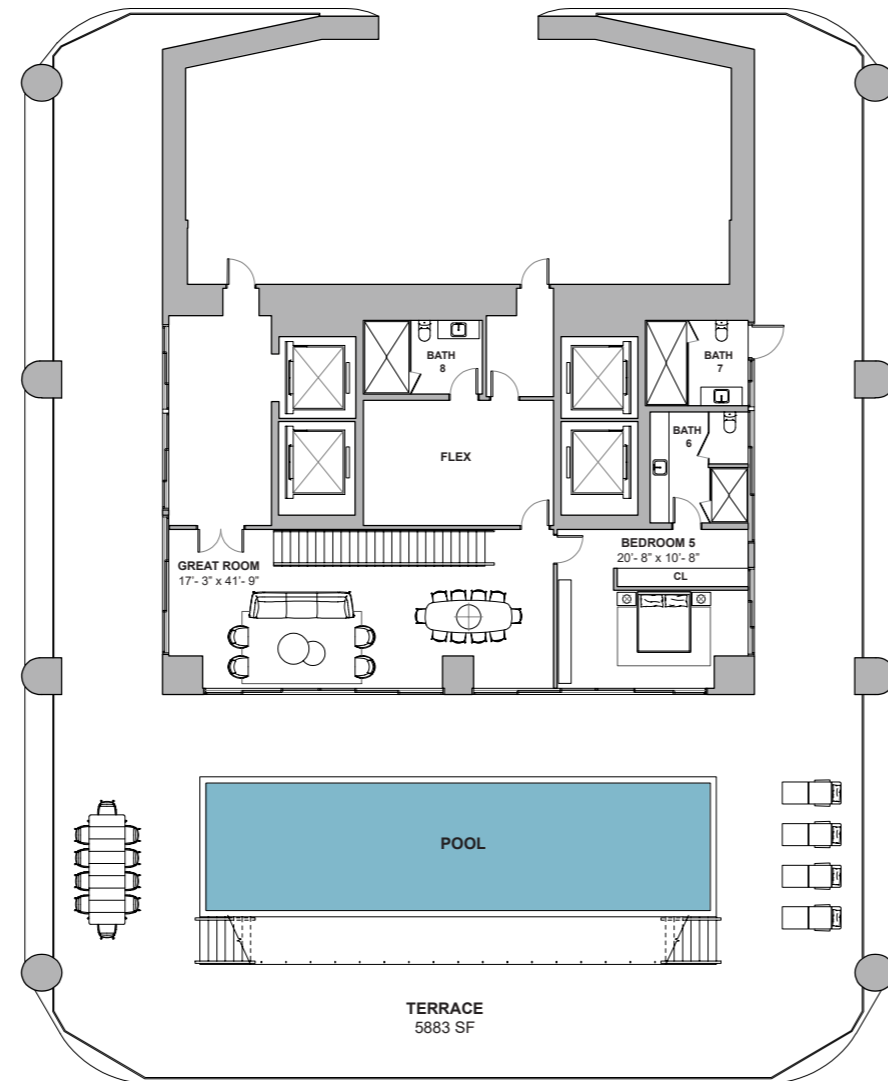
ST REGIS
SUNNY ISLES BEACH ♦ MIAMI
THE RESIDENCES

Collins Ave / AIA

Residence 01

North Tower / Levels 61 & 62

5 BEDROOMS | 9.5 BATHROOMS
STAFF QUARTERS | POOL
9,817 SF / 912 SM INTERIOR
8,308 SF / 771 SM EXTERIOR
18,125 SF / 1683 SM TOTAL



Atlantic Ocean

18801 Collins Ave, Sunny Isles Beach, FL 33160

Atlantic Ocean

DEVELOPMENT AND SALES
FORTUNE INTERNATIONAL GROUP
CHATEAU GROUP

The St. Regis Residences, Sunny Isles Beach are not owned, developed or sold by Marriott International, Inc. or its affiliates ("MI"). La Playa Beach Associates, LLC uses the St. Regis marks under a license from MI, which has not confirmed the accuracy of any of the statements or representations made herein. This project is being developed by La Playa Beach Associates, LLC, which has the right to use the trademark names and logos of Fortune International Group and Chateau Group. ORAL REPRESENTATIONS CANNOT BE RELIED UPON AS CORRECTLY STATING THE REPRESENTATIONS OF THE DEVELOPER. FOR CORRECT REPRESENTATIONS, MAKE REFERENCE TO THIS BROCHURE AND TO THE DOCUMENTS REQUIRED BY SECTION 718.503, FLORIDA STATUTES, TO BE FURNISHED BY A DEVELOPER TO A BUYER OR LESSEE. This is not intended to be an offer to sell, or solicitation to buy, condominium units to residents of any jurisdiction where prohibited by law, and your eligibility for purchase will depend upon your state of residency. Stated dimensions are measured to the exterior boundaries of the exterior walls and the centerline of interior demising walls and in fact vary from the dimensions that would be determined by using the description and definition of the "Unit" set forth in the Declaration (which generally only includes the interior airspace between the perimeter walls and excludes interior structural components). For your reference, the area of the Unit, determined in accordance with those defined unit boundaries, is set forth on Exhibit "3" to the Declaration. Note that measurements of rooms set forth on this floor plan are generally taken at the greatest points of each given room (as if the room were a perfect rectangle), without regard for any cutouts. Accordingly, the area of the actual room will typically be smaller than the product obtained by multiplying the stated length times width. All dimensions are approximate and may vary with actual construction, and all floor plans and development plans are subject to change. Furniture is not included with the sale of the Units.