



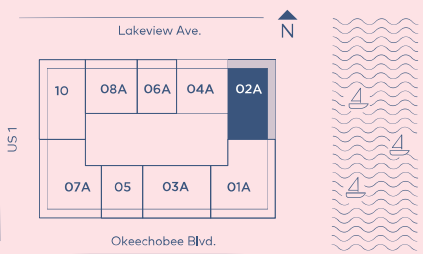
**Mr.C**  
RESIDENCES  
WEST PALM BEACH, FL

BY  
IGNAZIO  
AND  
MAGGIO  
CIPRIANI

RESIDENCE  
**02A**  
LEVEL 9-15

**2 Bedrooms**  
**2.5 Bathrooms**

INTERIOR: 1397 SQ. FT. 130 SQ. M.  
BALCONY: 486 SQ. FT. 45 SQ. M.  
TOTAL: 1883 SQ. FT. 175 SQ. M.

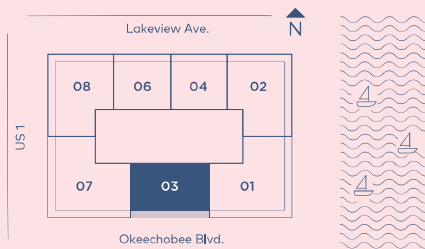


Stated square footages and dimensions are measured to the exterior boundaries of the exterior walls and the centerline of interior demising walls and in fact vary from the square footage and dimensions that would be determined by using the description and definition of the "Unit" set forth in the Declaration (which generally only includes the interior air space between the perimeter walls and includes all interior structural components and other common elements). This method is generally used in sales materials and is provided to allow a prospective buyer to compare the Units with units in other condominium projects that utilize the same method. Measurements of rooms set forth on this floor plan are generally taken at the farthest points of each given room (as if the room were a perfect rectangle), without regard for any cutouts or variations. Accordingly, the area of the actual room will typically be smaller than the product obtained by multiplying the stated length and width. All dimensions are estimates which will vary with actual construction, and all floor plans, specifications and other development plans are subject to change and will not necessarily accurately reflect the final plans and specifications for the development.

RESIDENCE  
**03**  
 LEVEL 16-20

2 Bedrooms  
 2.5 Bathrooms

INTERIOR: 1698 SQ.FT. 158 SQ. M.  
 BALCONY: 312 SQ.FT. 29 SQ. M.  
 TOTAL: 2010 SQ. FT. 187 SQ. M.



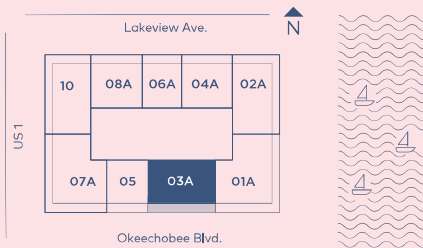
Stated square footages and dimensions are measured to the exterior boundaries of the exterior walls and the centerline of interior demising walls and in fact vary from the square footages and dimensions that would be determined by using the description and definition of the "Unit" set forth in the Declaration (which generally only includes the interior airspace between the perimeter walls and excludes all interior structural components and other common elements). This method is generally used in sales materials and is provided to allow a prospective buyer to compare the Units with units in other condominium projects that utilize the same method. Measurements of rooms set forth on this floor plan are generally taken at the farthest points of each given room (as if the room were a perfect rectangle), without regard for any cutouts or variations. Accordingly, the area of the actual room will typically be smaller than the product obtained by multiplying the stated length and width. All dimensions are estimates which will vary with actual construction, and all floor plans, specifications and other development plans are subject to change and will not necessarily accurately reflect the final plans and specifications for the development.

RESIDENCE  
**03A**

LEVEL 9-15

**2 Bedrooms**  
**2.5 Bathrooms**

INTERIOR: 1630 SQ. FT. 151 SQ. M.  
BALCONY: 310 SQ. FT. 29 SQ. M.  
TOTAL: 1940 SQ. FT. 180 SQ. M.



Stated square footages and dimensions are measured to the exterior boundaries of the exterior walls and the centerline of interior demising walls and in fact vary from the square footages and dimensions that would be determined by using the description and definition of the "Unit" set forth in the Declaration (which generally only includes the interior airspace between the perimeter walls and excludes all interior structural components and other common elements). This method is generally used in sales materials and is provided to allow a prospective buyer to compare the Units with units in other condominium projects that utilize the same method. Measurements of rooms set forth on this floor plan are generally taken at the farthest points of each given room (as if the room were a perfect rectangle), without regard for any cutouts or variations. Accordingly, the area of the actual room will typically be smaller than the product obtained by multiplying the stated length and width. All dimensions are estimates which will vary with actual construction, and all floor plans, specifications and other development plans are subject to change and will not necessarily accurately reflect the final plans and specifications for the development.



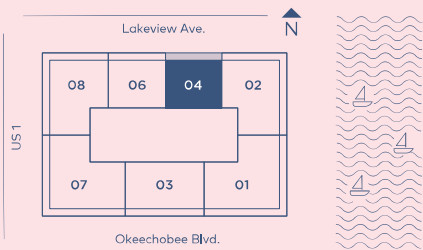
**Mr.C**  
RESIDENCES  
WEST PALM BEACH, FL

BY  
IGNAZIO  
AND  
MAGGIO  
CIPRIANI

RESIDENCE  
**04**  
LEVEL 16-20

**2 Bedrooms**  
**2 Bathrooms**

INTERIOR: 1149 SQ. FT. 107 SQ. M.  
BALCONY: 232 SQ. FT. 22 SQ. M.  
TOTAL: 1381 SQ. FT. 129 SQ. M.



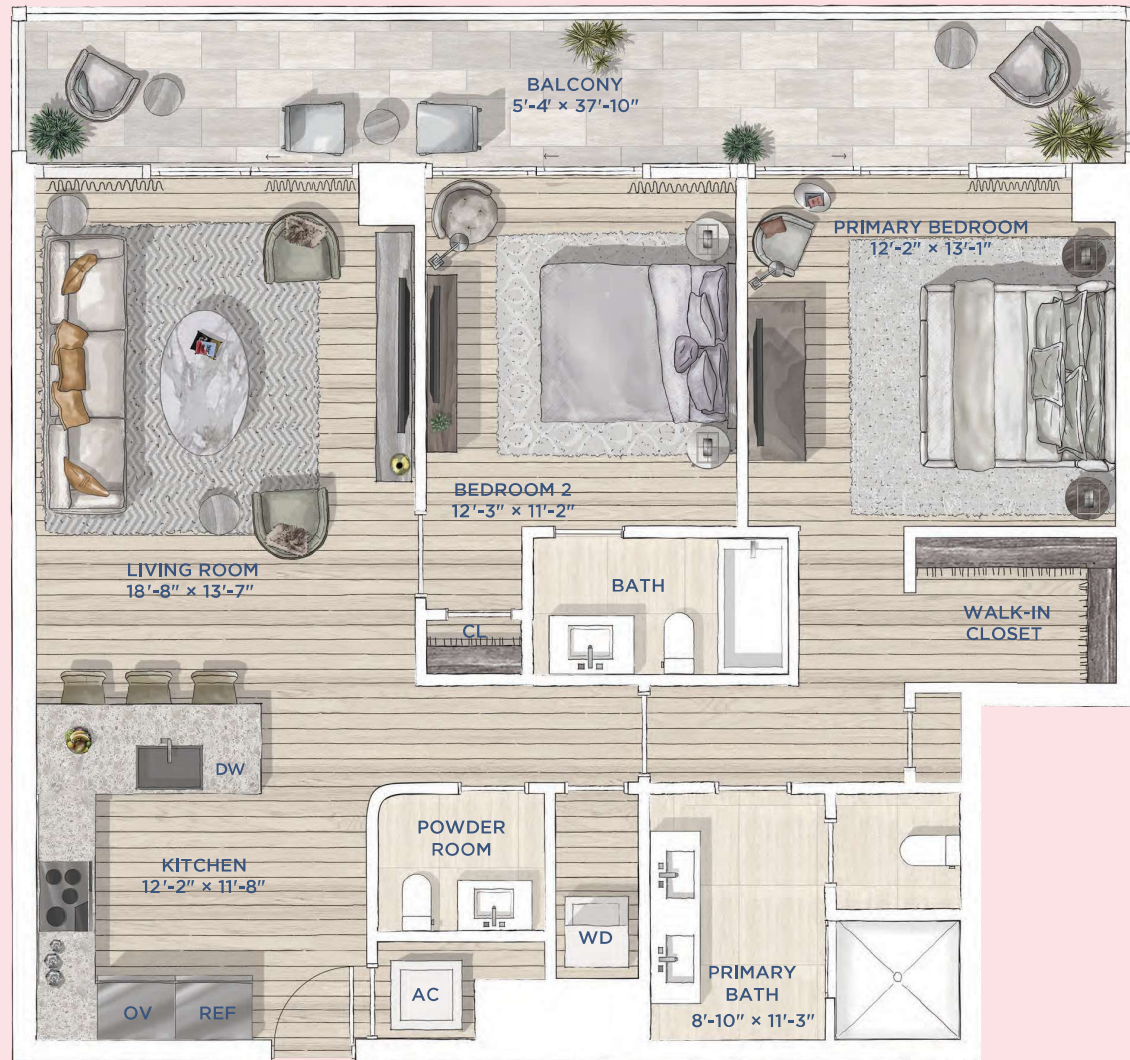
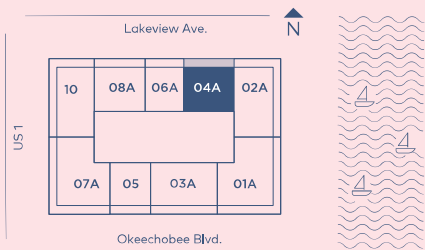
Stated square footages and dimensions are measured to the exterior boundaries of the exterior walls and the centerline of interior demising walls and in fact vary from the square footage and dimensions that would be determined by using the description and definition of the "Unit" set forth in the Declaration (which generally only includes the interior airspace between the perimeter walls and includes all interior structural components and other common elements). This method is generally used in sales materials and is provided to allow a prospective buyer to compare the Units with units in other condominium projects that utilize the same method. Measurements of rooms set forth on this floor plan are generally taken at the farthest points of each given room (as if the room were a perfect rectangle), without regard for any cutouts or variations. Accordingly, the area of the actual room will typically be smaller than the product obtained by multiplying the stated length and width. All dimensions are estimates which will vary with actual construction, and all floor plans, specifications and other development plans are subject to change and will not necessarily accurately reflect the final plans and specifications for the development.

RESIDENCE  
**04A**

LEVEL 9-15

**2 Bedrooms**  
**2.5 Bathrooms**

INTERIOR: 1170 SQ. FT. 109 SQ. M.  
 BALCONY: 230 SQ. FT. 21 SQ. M.  
 TOTAL: 1400 SQ. FT. 130 SQ. M.



Stated square footages and dimensions are measured to the exterior boundaries of the exterior walls and the centerline of interior demising walls and in fact vary from the square footage and dimensions that would be determined by using the description and definition of the "Unit" set forth in the Declaration (which generally only includes the interior airspace between the perimeter walls and excludes all interior structural components and other common elements). This method is generally used in sales materials and is provided to allow a prospective buyer to compare the Units with units in other condominium projects that utilize the same method. Measurements of rooms set forth on this floor plan are generally taken at the farthest points of each given room (as if the room were a perfect rectangle), without regard for any cutouts or variations. Accordingly, the area of the actual room will typically be smaller than the product obtained by multiplying the stated length and width. All dimensions are estimates which will vary with actual construction, and all floor plans, specifications and other development plans are subject to change and will not necessarily accurately reflect the final plans and specifications for the development.



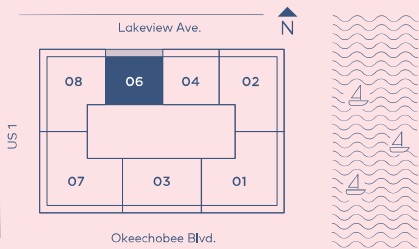
**Mr.C**  
RESIDENCES  
WEST PALM BEACH, FL

BY  
IGNAZIO  
AND  
MAGGIO  
CIPRIANI

RESIDENCE  
**06**  
LEVEL 16-20

**2 Bedrooms**  
**2.5 Bathrooms**

INTERIOR: 1178 SQ. FT. 109 SQ. M.  
BALCONY: 234 SQ. FT. 22 SQ. M.  
TOTAL: 1412 SQ. FT. 131 SQ. M.



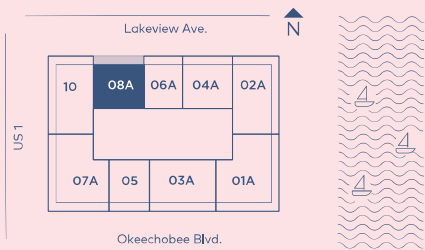
Stated square footages and dimensions are measured to the exterior boundaries of the exterior walls and the centerline of interior demising walls and in fact vary from the square footages and dimensions that would be determined by using the description and definition of the "Unit" set forth in the Declaration (which generally only includes the interior airspace between the perimeter walls and excludes all interior structural components and other common elements). This method is generally used in sales materials and is provided to allow a prospective buyer to compare the Units with units in other condominium projects that utilize the same method. Measurements of rooms set forth on this floor plan are generally taken at the farthest points of each given room (as if the room were a perfect rectangle), without regard for any cutouts or variations. Accordingly, the area of the actual room will typically be smaller than the product obtained by multiplying the stated length and width. All dimensions are estimates which will vary with actual construction, and all floor plans, specifications and other development plans are subject to change and will not necessarily accurately reflect the final plans and specifications for the development.

RESIDENCE  
**08A**

LEVEL 9-15

**2 Bedrooms**  
**2.5 Bathrooms**

INTERIOR: 1221 SQ. FT. 113 SQ. M.  
 BALCONY: 234 SQ. FT. 22 SQ. M.  
 TOTAL: 1455 SQ. FT. 135 SQ. M.



Stated square footages and dimensions are measured to the exterior boundaries of the exterior walls and the centerline of interior demising walls and in fact vary from the square footages and dimensions that would be determined by using the description and definition of the "Unit" set forth in the Declaration (which generally only includes the interior air space between the perimeter walls and excludes all interior structural components and other common elements). This method is generally used in sales materials and is provided to allow a prospective buyer to compare the Units with units in other condominium projects that utilize the same method. Measurements of rooms set forth on this floor plan are generally taken at the farthest points of each given room (as if the room were a perfect rectangle), without regard for any cutouts or variations. Accordingly, the area of the actual room will typically be smaller than the product obtained by multiplying the stated length and width. All dimensions are estimates which will vary with actual construction, and all floor plans, specifications and other development plans are subject to change and will not necessarily accurately reflect the final plans and specifications for the development.



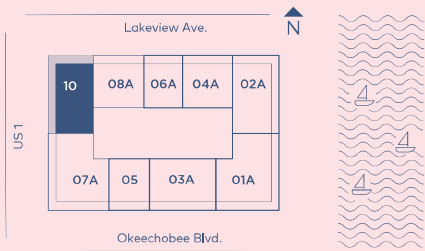
**Mr.C**  
RESIDENCES  
WEST PALM BEACH, FL

BY  
IGNAZIO  
AND  
MAGGIO  
CIPRIANI

RESIDENCE  
**10**  
LEVEL 9-15

**2 Bedrooms**  
**2.5 Bathrooms**

INTERIOR: 1414 SQ. FT. 131 SQ. M.  
BALCONY: 482 SQ. FT. 45 SQ. M.  
TOTAL: 1896 SQ. FT. 176 SQ. M.

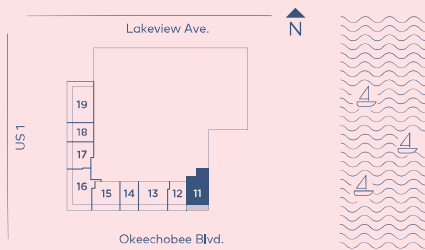


Stated square footages and dimensions are measured to the exterior boundaries of the exterior walls and the centerline of interior demising walls and in fact vary from the square footages and dimensions that would be determined by using the description and definition of the "Unit" set forth in the Declaration (which generally only includes the interior air space between the perimeter walls and includes all interior structural components and other common elements). This method is generally used in sales materials and is provided to allow a prospective buyer to compare the Units with units in other condominium projects that utilize the same method. Measurements of rooms set forth on this floor plan are generally taken at the farthest points of each given room (as if the room were a perfect rectangle), without regard for any cutouts or variations. Accordingly, the area of the actual room will typically be smaller than the product obtained by multiplying the stated length and width. All dimensions are estimates which will vary with actual construction, and all floor plans, specifications and other development plans are subject to change and will not necessarily accurately reflect the final plans and specifications for the development.

RESIDENCE  
**11**  
LEVEL 3-7

**2 Bedrooms**  
**2.5 Bathrooms**

INTERIOR: 1383 SQ. FT. 128 SQ. M.  
BALCONY: 287 SQ. FT. 27 SQ. M.  
TOTAL: 1670 SQ. FT. 155 SQ. M.



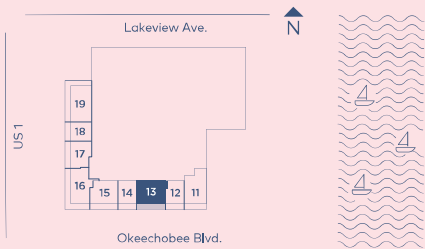
  
**Mr.C**  
**RESIDENCES**  
 WEST PALM BEACH, FL

BY  
 IGNAZIO  
 AND  
 MAGGIO  
 CIPRIANI

RESIDENCE  
**13**  
 LEVEL 2-7

**2 Bedrooms**  
**2.5 Bathrooms**

INTERIOR: 1201 SQ. FT. 112 SQ. M.  
 BALCONY: 338 SQ. FT. 31 SQ. M.  
 TOTAL: 1539 SQ. FT. 143 SQ. M.



Stated square footages and dimensions are measured to the exterior boundaries of the exterior walls and the centerline of interior demising walls and in fact vary from the square footage and dimensions that would be determined by using the description and definition of the "Unit" set forth in the Declaration (which generally only includes the interior airspace between the perimeter walls and includes all interior structural components and other common elements). This method is generally used in sales materials and is provided to allow a prospective buyer to compare the Units with units in other condominium projects that utilize the same method. Measurements of rooms set forth on this floor plan are generally taken at the farthest points of each given room (as if the room were a perfect rectangle), without regard for any cutouts or variations. Accordingly, the area of the actual room will typically be smaller than the product obtained by multiplying the stated length and width. All dimensions are estimates which will vary with actual construction, and all floor plans, specifications and other development plans are subject to change and will not necessarily accurately reflect the final plans and specifications for the development.

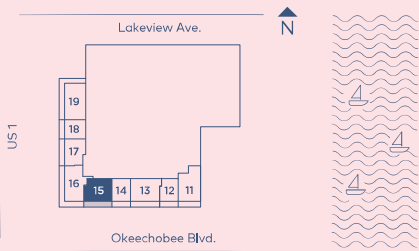
  
**Mr.C**  
**RESIDENCES**  
 WEST PALM BEACH, FL

BY  
 IGNAZIO  
 AND  
 MAGGIO  
 CIPRIANI

RESIDENCE  
**15**  
 LEVEL 3-7

**2 Bedrooms**  
**2.5 Bathrooms**

INTERIOR: 1166 SQ. FT. 108 SQ. M.  
 BALCONY: 234 SQ. FT. 22 SQ. M.  
 TOTAL: 1400 SQ. FT. 130 SQ. M.



Stated square footages and dimensions are measured to the exterior boundaries of the exterior walls and the centerline of interior demising walls and in fact vary from the square footage and dimensions that would be determined by using the description and definition of the "Unit" set forth in the Declaration (which generally only includes the interior airspace between the perimeter walls and excludes all interior structural components and other common elements). This method is generally used in sales materials and is provided to allow a prospective buyer to compare the Units with units in other condominium projects that utilize the same method. Measurements of rooms set forth on this floor plan are generally taken at the farthest points of each given room (as if the room were a perfect rectangle), without regard for any cutouts or variations. Accordingly, the area of the actual room will typically be smaller than the product obtained by multiplying the stated length and width. All dimensions are estimates which will vary with actual construction, and all floor plans, specifications and other development plans are subject to change and will not necessarily accurately reflect the final plans and specifications for the development.

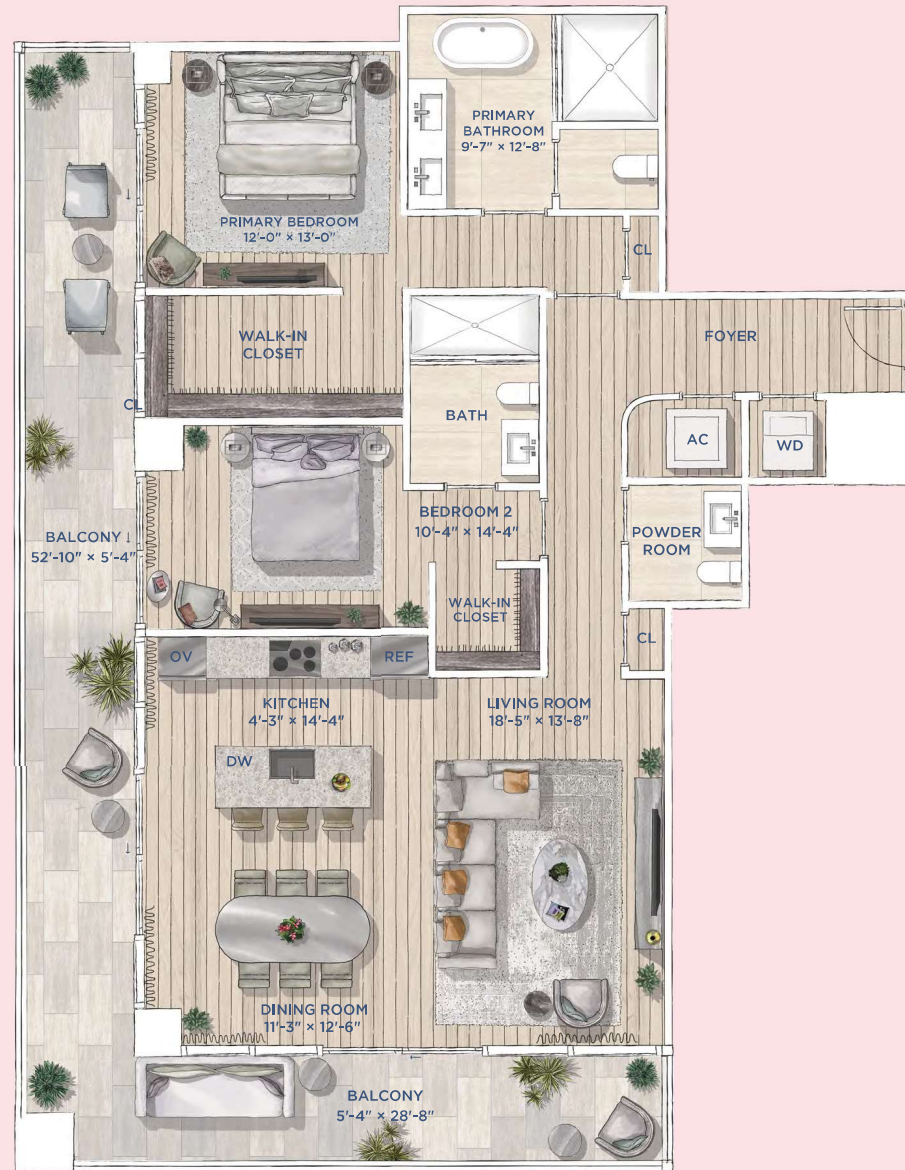
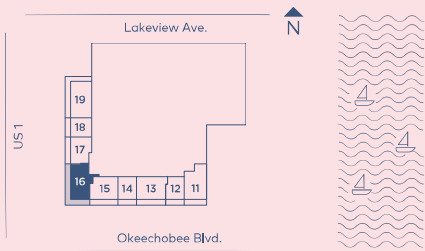
  
**Mr.C**  
**RESIDENCES**  
 WEST PALM BEACH, FL

BY  
 IGNAZIO  
 AND  
 MAGGIO  
 CIPRIANI

RESIDENCE  
**16**  
 LEVEL 3-7

**2 Bedrooms**  
**2.5 Bathrooms**

INTERIOR: 1510 SQ. FT. 140 SQ. M.  
 BALCONY: 483 SQ. FT. 45 SQ. M.  
 TOTAL: 1993 SQ. FT. 185 SQ. M.



Stated square footages and dimensions are measured to the exterior boundaries of the exterior walls and the centerline of interior demising walls and in fact vary from the square footage and dimensions that would be determined by using the description and definition of the "Unit" set forth in the Declaration (which generally only includes the interior airspace between the perimeter walls and includes all interior structural components and other common elements). This method is generally used in sales materials and is provided to allow a prospective buyer to compare the Units with units in other condominium projects that utilize the same method. Measurements of rooms set forth on this floor plan are generally taken at the farthest points of each given room (as if the room were a perfect rectangle), without regard for any cutouts or variations. Accordingly, the area of the actual room will typically be smaller than the product obtained by multiplying the stated length and width. All dimensions are estimates which will vary with actual construction, and all floor plans, specifications and other development plans are subject to change and will not necessarily accurately reflect the final plans and specifications for the development.

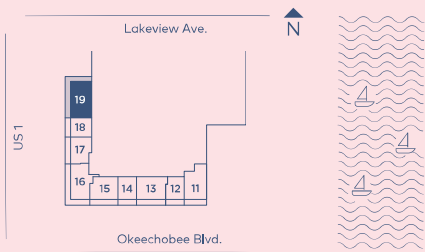
  
**Mr.C**  
**RESIDENCES**  
 WEST PALM BEACH, FL

BY  
 IGNAZIO  
 AND  
 MAGGIO  
 CIPRIANI

RESIDENCE  
**19**  
 LEVEL 2-7

**2 Bedrooms**  
**2.5 Bathrooms**

INTERIOR: 1528 SQ. FT. 142 SQ. M.  
 BALCONY: 669 SQ. FT. 62 SQ. M.  
 TOTAL: 2197 SQ. FT. 204 SQ. M.



Stated square footages and dimensions are measured to the exterior boundaries of the exterior walls and the centerline of interior demising walls and in fact vary from the square footage and dimensions that would be determined by using the description and definition of the "Unit" set forth in the Declaration (which generally only includes the interior airspace between the perimeter walls and excludes all interior structural components and other common elements). This method is generally used in sales materials and is provided to allow a prospective buyer to compare the Units with units in other condominium projects that utilize the same method. Measurements of rooms set forth on this floor plan are generally taken at the farthest points of each given room (as if the room were a perfect rectangle), without regard for any cutouts or variations. Accordingly, the area of the actual room will typically be smaller than the product obtained by multiplying the stated length and width. All dimensions are estimates which will vary with actual construction, and all floor plans, specifications and other development plans are subject to change and will not necessarily accurately reflect the final plans and specifications for the development.