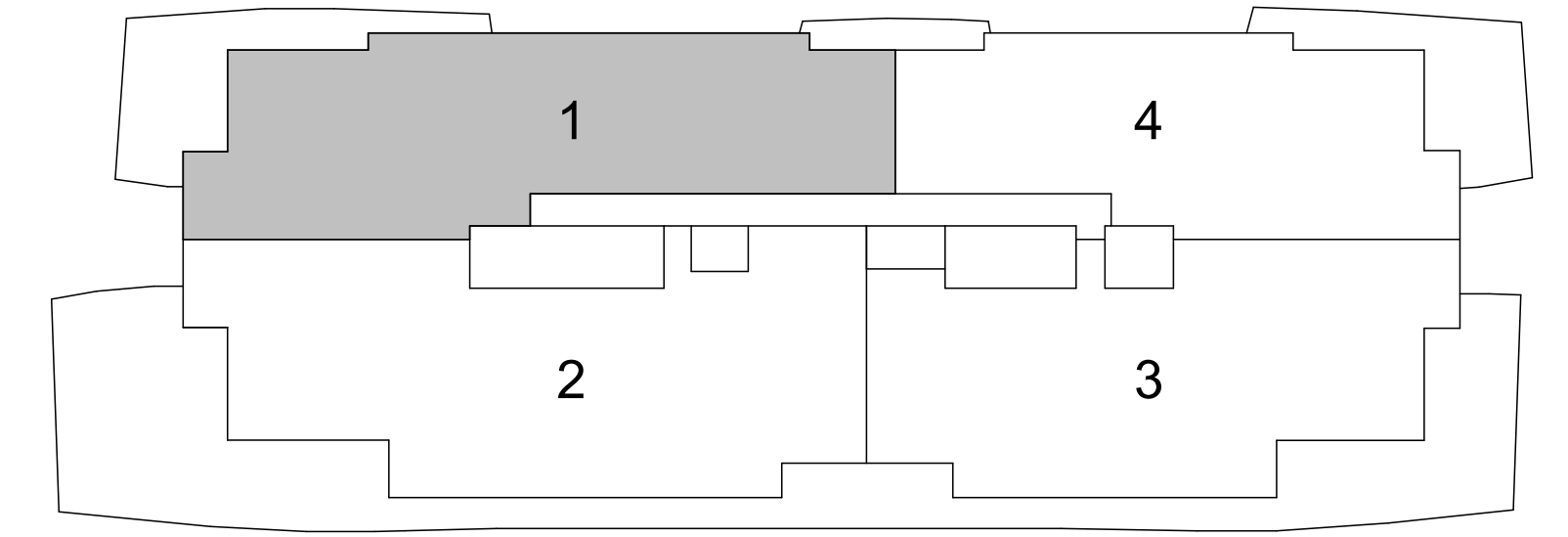


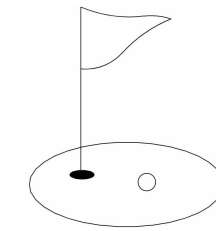
GLASS HOUSE BOCA RATON

UNIT 21

3 BR / 3.5 BATH
 UNIT AREA: 3,085 SF
 TERRACE AREA: 596 SF



← THE BOCA RATON RESORT AND GOLF COURSE

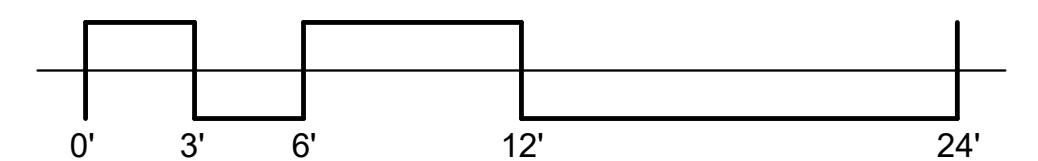


E PALMETTO PARK RD →



ORAL REPRESENTATIONS CANNOT BE RELIED UPON AS CORRECTLY STATING THE REPRESENTATIONS OF THE DEVELOPER. FOR CORRECT REPRESENTATIONS, MAKE REFERENCE TO THIS BROCHURE AND TO THE DOCUMENTS REQUIRED BY SECTION 718.503, FLORIDA STATUTES, TO BE FURNISHED BY A DEVELOPER TO A BUYER OR LESSEE.

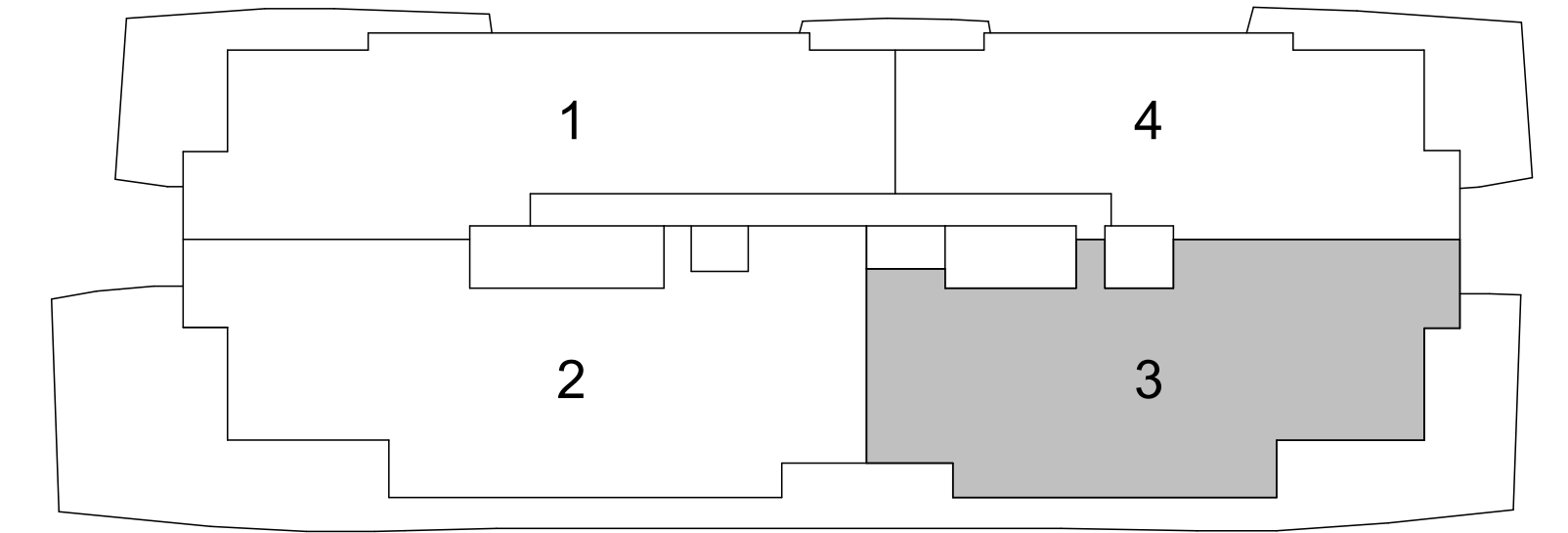
THIS OFFERING IS MADE ONLY BY THE PROSPECTUS FOR THE CONDOMINIUM AND NO STATEMENT SHOULD BE RELIED UPON IF NOT MADE IN THE PROSPECTUS. THIS IS NOT INTENDED TO BE AN OFFER TO SELL NOR A SOLICITATION OF OFFERS TO BUY IN ANY JURISDICTION WHERE PROHIBITED BY LAW, AND YOUR ELIGIBILITY FOR PURCHASE WILL DEPEND UPON YOUR STATE OF RESIDENCY. ALL FEATURES, SPECIFICATIONS, BRANDS, MATTERS OF DETAIL ARE CONCEPTUAL ONLY AND SHOULD NOT BE RELIED UPON AS REPRESENTATIONS, EXPRESS OR IMPLIED, OF THE FINAL DETAIL OF THE RESIDENCES OR CONDOMINIUM. 280 E PALMETTO PARK ROAD LLC, A FLORIDA LIMITED LIABILITY COMPANY ("DEVELOPER") EXPRESSLY RESERVES THE RIGHT TO MAKE MODIFICATIONS, REVISIONS, OMISSIONS, AND CHANGES WITHOUT NOTICE. CERTAIN FEATURES MAY NOT BE INCLUDED WITH ALL UNITS. SQUARE FOOTAGES, CEILING HEIGHTS, DOOR SIZES AND TERRACE DIMENSIONS ARE APPROXIMATE, SUBJECT TO CHANGE AND MAY VARY WITH ACTUAL CONSTRUCTION. CEILING HEIGHTS ARE MEASURED FROM TOP OF SLAB TO TOP OF SLAB. AS A RESULT, ACTUAL CLEARANCE BETWEEN THE TOP OF THE FINISHED FLOOR COVERINGS AND THE UNDERSIDE OF THE FINISHED CEILING, DROP CEILING OR SOFFITS WILL BE LESS. DEVELOPER MAKES NO REPRESENTATIONS REGARDING VIEWS FROM ANY PARTICULAR UNIT. YOUR PURCHASE AGREEMENT WILL DETAIL ITEMS INCLUDED WITH THE UNIT. STORAGE AND PRIVATE GARAGES ARE LIMITED AND NOT INCLUDED WITH ALL UNITS. DEVELOPER RESERVES THE RIGHT TO SELECT, RETAIN, REMOVE AND/OR CHANGE ANY PARTICULAR DESIGN OR CONSTRUCTION PROFESSIONAL (E.G., ARCHITECT, CONTRACTOR, INTERIOR DESIGNER) INVOLVED IN THE DEVELOPMENT OR DESIGN OF THE CONDOMINIUM. WARNING: THE CALIFORNIA DEPARTMENT OF REAL ESTATE HAS NOT INSPECTED, EXAMINED, OR QUALIFIED THIS OFFERING. THE COMPLETE OFFERING TERMS ARE IN A CPS-12 APPLICATION AVAILABLE FROM THE OFFEROR. FILE NO. CP24-0033. THIS CONDOMINIUM HAS BEEN REGISTERED WITH THE MASSACHUSETTS BOARD OF REGISTRATION OF REAL ESTATE BROKERS AND SALESPERSONS F-1292-01-01. ARTIST'S RENDERING IMAGES.



GLASS HOUSE BOCA RATON

UNIT 23

3 BR / 3.5 BATH
 UNIT AREA: 3,235 SF
 TERRACE AREA: 1,224 SF



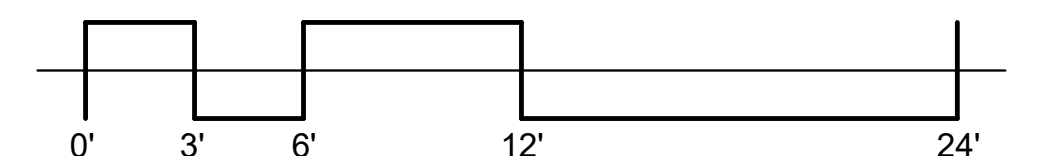
← THE BOCA RATON RESORT AND GOLF COURSE

E PALMETTO PARK RD →



ORAL REPRESENTATIONS CANNOT BE RELIED UPON AS CORRECTLY STATING THE REPRESENTATIONS OF THE DEVELOPER. FOR CORRECT REPRESENTATIONS, MAKE REFERENCE TO THIS BROCHURE AND TO THE DOCUMENTS REQUIRED BY SECTION 718.503, FLORIDA STATUTES, TO BE FURNISHED BY A DEVELOPER TO A BUYER OR LESSEE.

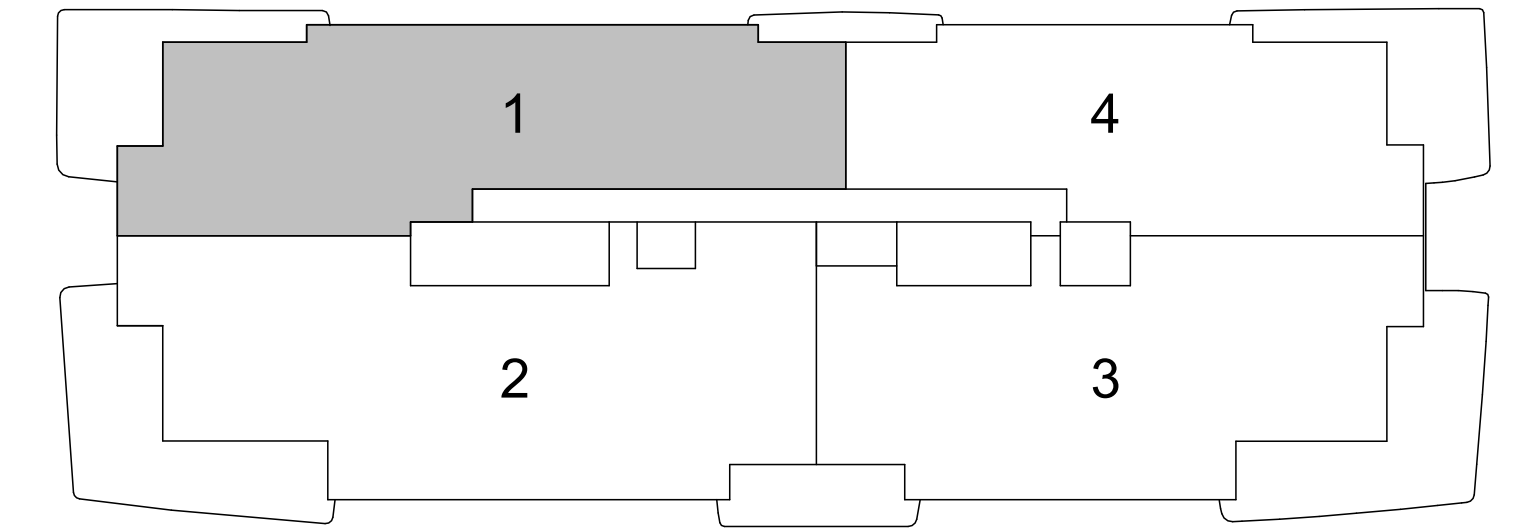
THIS OFFERING IS MADE ONLY BY THE PROSPECTUS FOR THE CONDOMINIUM AND NO STATEMENT SHOULD BE RELIED UPON IF NOT MADE IN THE PROSPECTUS. THIS IS NOT INTENDED TO BE AN OFFER TO SELL NOR A SOLICITATION OF OFFERS TO BUY IN ANY JURISDICTION WHERE PROHIBITED BY LAW, AND YOUR ELIGIBILITY FOR PURCHASE WILL DEPEND UPON YOUR STATE OF RESIDENCY. ALL FEATURES, SPECIFICATIONS, BRANDS, MATTERS OF DETAIL ARE CONCEPTUAL ONLY AND SHOULD NOT BE RELIED UPON AS REPRESENTATIONS, EXPRESS OR IMPLIED, OF THE FINAL DETAIL OF THE RESIDENCES OR CONDOMINIUM. 280 E PALMETTO PARK ROAD LLC, A FLORIDA LIMITED LIABILITY COMPANY ("DEVELOPER") EXPRESSLY RESERVES THE RIGHT TO MAKE MODIFICATIONS, REVISIONS, OMISSIONS, AND CHANGES WITHOUT NOTICE. CERTAIN FEATURES MAY NOT BE INCLUDED WITH ALL UNITS. SQUARE FOOTAGES, CEILING HEIGHTS, DOOR SIZES AND TERRACE DIMENSIONS ARE APPROXIMATE, SUBJECT TO CHANGE AND MAY VARY WITH ACTUAL CONSTRUCTION. CEILING HEIGHTS ARE MEASURED FROM TOP OF SLAB TO TOP OF SLAB. AS A RESULT, ACTUAL CLEARANCE BETWEEN THE TOP OF THE FINISHED FLOOR COVERINGS AND THE UNDERSIDE OF THE FINISHED CEILING, DROP CEILING OR SOFFITS WILL BE LESS. DEVELOPER MAKES NO REPRESENTATIONS REGARDING VIEWS FROM ANY PARTICULAR UNIT. YOUR PURCHASE AGREEMENT WILL DETAIL ITEMS INCLUDED WITH THE UNIT. STORAGE AND PRIVATE GARAGES ARE LIMITED AND NOT INCLUDED WITH ALL UNITS. DEVELOPER RESERVES THE RIGHT TO SELECT, RETAIN, REMOVE AND/OR CHANGE ANY PARTICULAR DESIGN OR CONSTRUCTION PROFESSIONAL (E.G., ARCHITECT, CONTRACTOR, INTERIOR DESIGNER) INVOLVED IN THE DEVELOPMENT OR DESIGN OF THE CONDOMINIUM. WARNING: THE CALIFORNIA DEPARTMENT OF REAL ESTATE HAS NOT INSPECTED, EXAMINED, OR QUALIFIED THIS OFFERING. THE COMPLETE OFFERING TERMS ARE IN A CPS-12 APPLICATION AVAILABLE FROM THE OFFEROR. FILE NO. CP24-0033. THIS CONDOMINIUM HAS BEEN REGISTERED WITH THE MASSACHUSETTS BOARD OF REGISTRATION OF REAL ESTATE BROKERS AND SALESPERSONS F-1292-01-01. ARTIST'S RENDERING IMAGES.



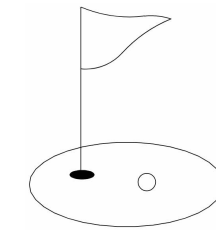
GLASS HOUSE BOCA RATON

UNIT 31

3 BR / 3.5 BATH
 UNIT AREA: 3,085 SF
 TERRACE AREA: 595 SF



← THE BOCA RATON RESORT AND GOLF COURSE

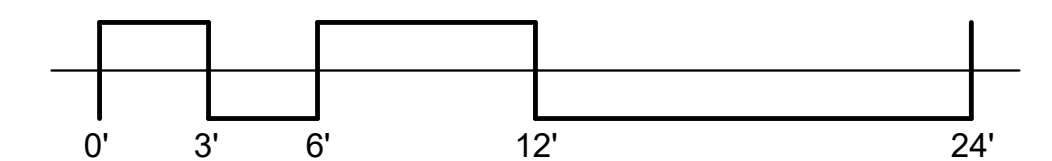


E PALMETTO PARK RD →



ORAL REPRESENTATIONS CANNOT BE RELIED UPON AS CORRECTLY STATING THE REPRESENTATIONS OF THE DEVELOPER. FOR CORRECT REPRESENTATIONS, MAKE REFERENCE TO THIS BROCHURE AND TO THE DOCUMENTS REQUIRED BY SECTION 718.503, FLORIDA STATUTES, TO BE FURNISHED BY A DEVELOPER TO A BUYER OR LESSEE.

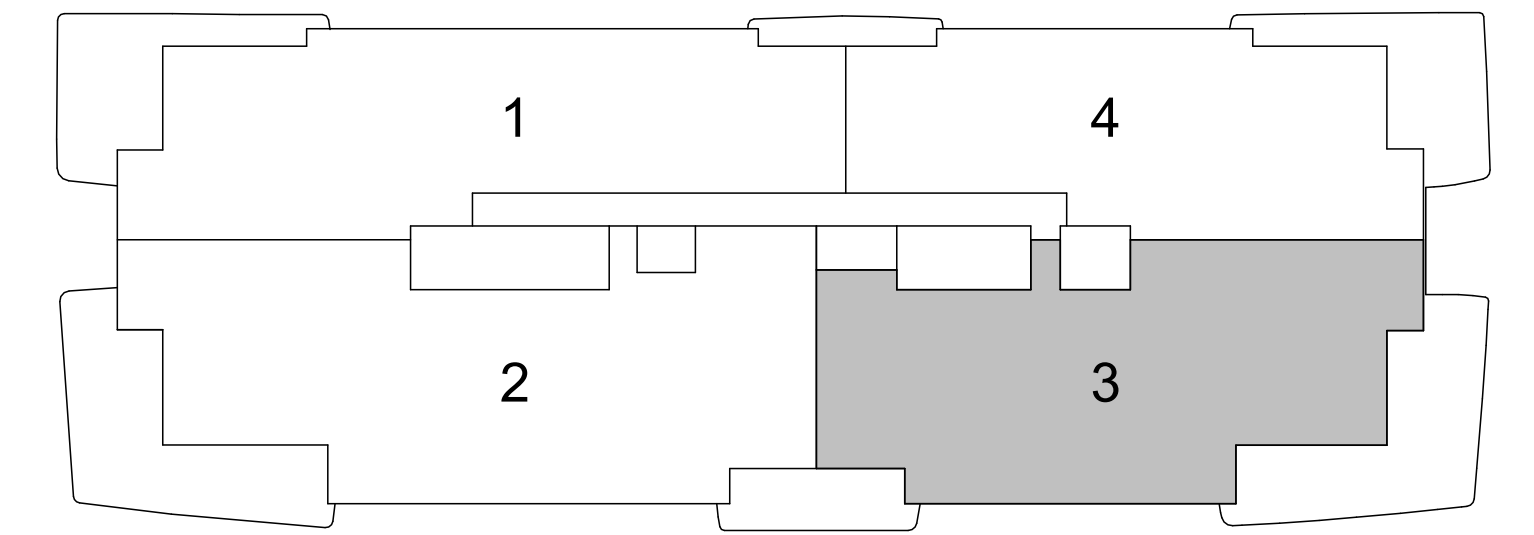
THIS OFFERING IS MADE ONLY BY THE PROSPECTUS FOR THE CONDOMINIUM AND NO STATEMENT SHOULD BE RELIED UPON IF NOT MADE IN THE PROSPECTUS. THIS IS NOT INTENDED TO BE AN OFFER TO SELL NOR A SOLICITATION OF OFFERS TO BUY IN ANY JURISDICTION WHERE PROHIBITED BY LAW, AND YOUR ELIGIBILITY FOR PURCHASE WILL DEPEND UPON YOUR STATE OF RESIDENCY. ALL FEATURES, SPECIFICATIONS, BRANDS, MATTERS OF DETAIL ARE CONCEPTUAL ONLY AND SHOULD NOT BE RELIED UPON AS REPRESENTATIONS, EXPRESS OR IMPLIED, OF THE FINAL DETAIL OF THE RESIDENCES OR CONDOMINIUM. 280 E PALMETTO PARK ROAD LLC, A FLORIDA LIMITED LIABILITY COMPANY ("DEVELOPER") EXPRESSLY RESERVES THE RIGHT TO MAKE MODIFICATIONS, REVISIONS, OMISSIONS, AND CHANGES WITHOUT NOTICE. CERTAIN FEATURES MAY NOT BE INCLUDED WITH ALL UNITS. SQUARE FOOTAGES, CEILING HEIGHTS, DOOR SIZES AND TERRACE DIMENSIONS ARE APPROXIMATE, SUBJECT TO CHANGE AND MAY VARY WITH ACTUAL CONSTRUCTION. CEILING HEIGHTS ARE MEASURED FROM TOP OF SLAB TO TOP OF SLAB. AS A RESULT, ACTUAL CLEARANCE BETWEEN THE TOP OF THE FINISHED FLOOR COVERINGS AND THE UNDERSIDE OF THE FINISHED CEILING, DROP CEILING OR SOFFITS WILL BE LESS. DEVELOPER MAKES NO REPRESENTATIONS REGARDING VIEWS FROM ANY PARTICULAR UNIT. YOUR PURCHASE AGREEMENT WILL DETAIL ITEMS INCLUDED WITH THE UNIT. STORAGE AND PRIVATE GARAGES ARE LIMITED AND NOT INCLUDED WITH ALL UNITS. DEVELOPER RESERVES THE RIGHT TO SELECT, RETAIN, REMOVE AND/OR CHANGE ANY PARTICULAR DESIGN OR CONSTRUCTION PROFESSIONAL (E.G., ARCHITECT, CONTRACTOR, INTERIOR DESIGNER) INVOLVED IN THE DEVELOPMENT OR DESIGN OF THE CONDOMINIUM. WARNING: THE CALIFORNIA DEPARTMENT OF REAL ESTATE HAS NOT INSPECTED, EXAMINED, OR QUALIFIED THIS OFFERING. THE COMPLETE OFFERING TERMS ARE IN A CPS-12 APPLICATION AVAILABLE FROM THE OFFEROR. FILE NO. CP24-0033. THIS CONDOMINIUM HAS BEEN REGISTERED WITH THE MASSACHUSETTS BOARD OF REGISTRATION OF REAL ESTATE BROKERS AND SALESPERSONS F-1292-01-01. ARTIST'S RENDERING IMAGES.



GLASS HOUSE BOCA RATON

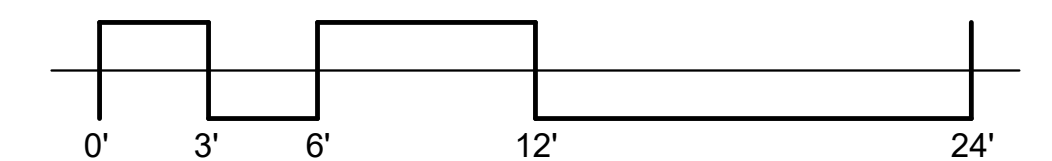
UNIT 33

3 BR / 3.5 BATH
 UNIT AREA: 3,235 SF
 TERRACE AREA: 920 SF



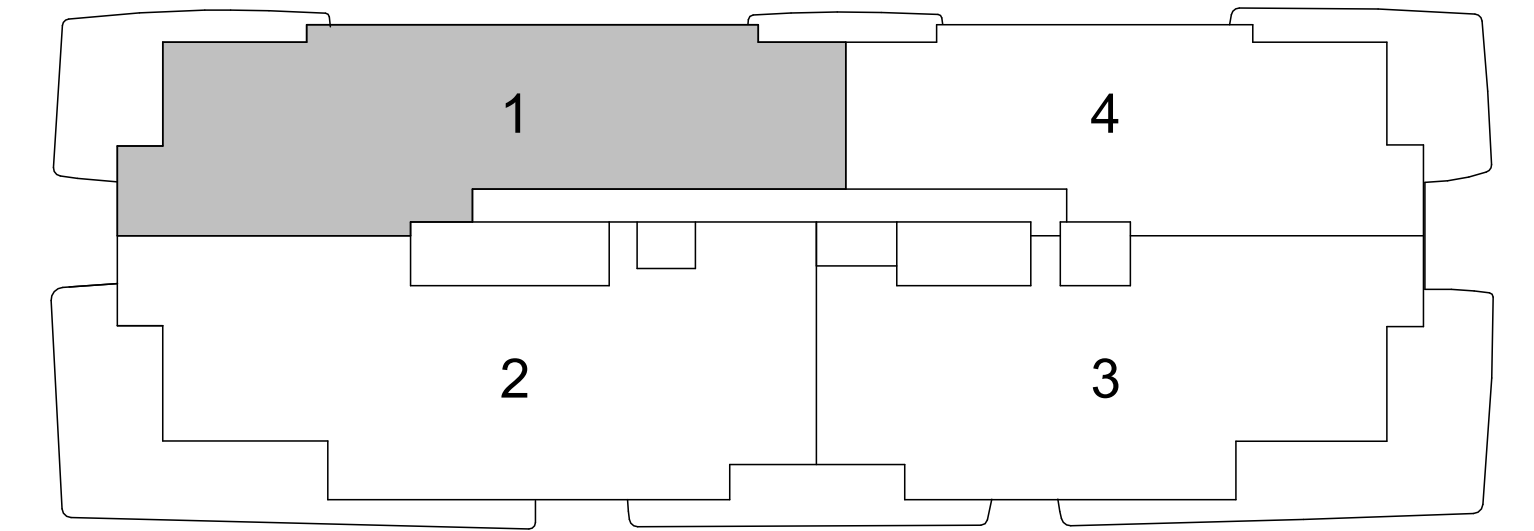
ORAL REPRESENTATIONS CANNOT BE RELIED UPON AS CORRECTLY STATING THE REPRESENTATIONS OF THE DEVELOPER. FOR CORRECT REPRESENTATIONS, MAKE REFERENCE TO THIS BROCHURE AND TO THE DOCUMENTS REQUIRED BY SECTION 718.503, FLORIDA STATUTES, TO BE FURNISHED BY A DEVELOPER TO A BUYER OR LESSEE.

THIS OFFERING IS MADE ONLY BY THE PROSPECTUS FOR THE CONDOMINIUM AND NO STATEMENT SHOULD BE RELIED UPON IF NOT MADE IN THE PROSPECTUS. THIS IS NOT INTENDED TO BE AN OFFER TO SELL NOR A SOLICITATION OF OFFERS TO BUY IN ANY JURISDICTION WHERE PROHIBITED BY LAW, AND YOUR ELIGIBILITY FOR PURCHASE WILL DEPEND UPON YOUR STATE OF RESIDENCY. ALL FEATURES, SPECIFICATIONS, BRANDS, MATTERS OF DETAIL ARE CONCEPTUAL ONLY AND SHOULD NOT BE RELIED UPON AS REPRESENTATIONS, EXPRESS OR IMPLIED, OF THE FINAL DETAIL OF THE RESIDENCES OR CONDOMINIUM. 280 E PALMETTO PARK ROAD LLC, A FLORIDA LIMITED LIABILITY COMPANY ("DEVELOPER") EXPRESSLY RESERVES THE RIGHT TO MAKE MODIFICATIONS, REVISIONS, OMISSIONS, AND CHANGES WITHOUT NOTICE. CERTAIN FEATURES MAY NOT BE INCLUDED WITH ALL UNITS. SQUARE FOOTAGES, CEILING HEIGHTS, DOOR SIZES AND TERRACE DIMENSIONS ARE APPROXIMATE, SUBJECT TO CHANGE AND MAY VARY WITH ACTUAL CONSTRUCTION. CEILING HEIGHTS ARE MEASURED FROM TOP OF SLAB TO TOP OF SLAB. AS A RESULT, ACTUAL CLEARANCE BETWEEN THE TOP OF THE FINISHED FLOOR COVERINGS AND THE UNDERSIDE OF THE FINISHED CEILING, DROP CEILING OR SOFFITS WILL BE LESS. DEVELOPER MAKES NO REPRESENTATIONS REGARDING VIEWS FROM ANY PARTICULAR UNIT. YOUR PURCHASE AGREEMENT WILL DETAIL ITEMS INCLUDED WITH THE UNIT. STORAGE AND PRIVATE GARAGES ARE LIMITED AND NOT INCLUDED WITH ALL UNITS. DEVELOPER RESERVES THE RIGHT TO SELECT, RETAIN, REMOVE AND/OR CHANGE ANY PARTICULAR DESIGN OR CONSTRUCTION PROFESSIONAL (E.G., ARCHITECT, CONTRACTOR, INTERIOR DESIGNER) INVOLVED IN THE DEVELOPMENT OR DESIGN OF THE CONDOMINIUM. WARNING: THE CALIFORNIA DEPARTMENT OF REAL ESTATE HAS NOT INSPECTED, EXAMINED, OR QUALIFIED THIS OFFERING. THE COMPLETE OFFERING TERMS ARE IN A CPS-12 APPLICATION AVAILABLE FROM THE OFFEROR. FILE NO. CP24-0033. THIS CONDOMINIUM HAS BEEN REGISTERED WITH THE MASSACHUSETTS BOARD OF REGISTRATION OF REAL ESTATE BROKERS AND SALESPERSONS F-1292-01-01. ARTIST'S RENDERING IMAGES.

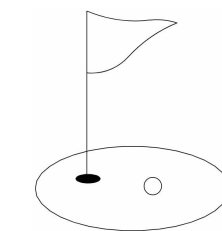


GLASS HOUSE BOCA RATON

UNIT 41
 3 BR / 3.5 BATH
 UNIT AREA: 3,085 SF
 TERRACE AREA: 581 SF



← **THE BOCA RATON RESORT AND GOLF COURSE**

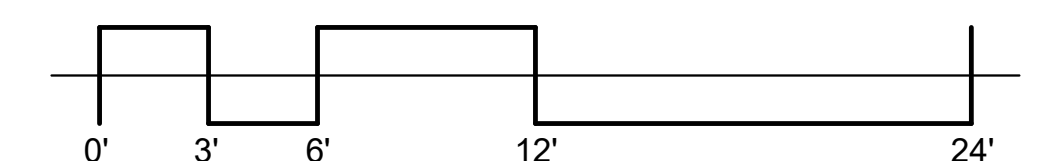


E PALMETTO PARK RD →



ORAL REPRESENTATIONS CANNOT BE RELIED UPON AS CORRECTLY STATING THE REPRESENTATIONS OF THE DEVELOPER. FOR CORRECT REPRESENTATIONS, MAKE REFERENCE TO THIS BROCHURE AND TO THE DOCUMENTS REQUIRED BY SECTION 718.503, FLORIDA STATUTES, TO BE FURNISHED BY A DEVELOPER TO A BUYER OR LESSEE.

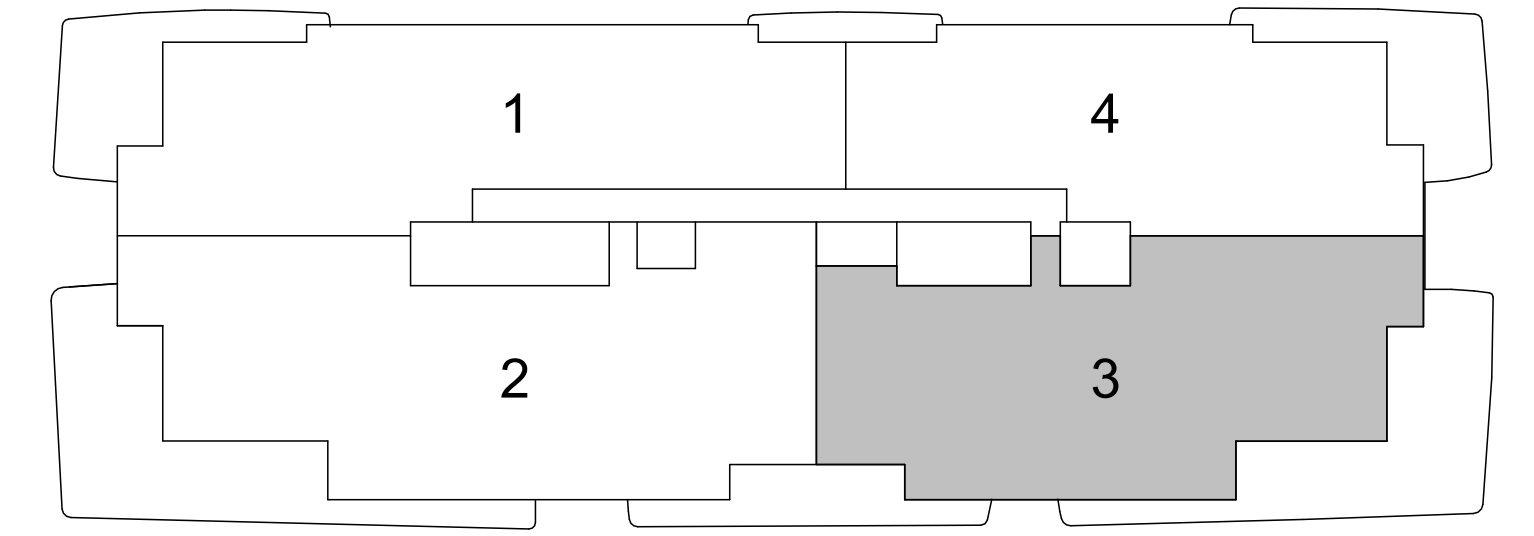
THIS OFFERING IS MADE ONLY BY THE PROSPECTUS FOR THE CONDOMINIUM AND NO STATEMENT SHOULD BE RELIED UPON IF NOT MADE IN THE PROSPECTUS. THIS IS NOT INTENDED TO BE AN OFFER TO SELL NOR A SOLICITATION OF OFFERS TO BUY IN ANY JURISDICTION WHERE PROHIBITED BY LAW, AND YOUR ELIGIBILITY FOR PURCHASE WILL DEPEND UPON YOUR STATE OF RESIDENCY. ALL FEATURES, SPECIFICATIONS, BRANDS, MATTERS OF DETAIL ARE CONCEPTUAL ONLY AND SHOULD NOT BE RELIED UPON AS REPRESENTATIONS, EXPRESS OR IMPLIED, OF THE FINAL DETAIL OF THE RESIDENCES OR CONDOMINIUM. 280 E PALMETTO PARK ROAD LLC, A FLORIDA LIMITED LIABILITY COMPANY ("DEVELOPER") EXPRESSLY RESERVES THE RIGHT TO MAKE MODIFICATIONS, REVISIONS, OMISSIONS, AND CHANGES WITHOUT NOTICE. CERTAIN FEATURES MAY NOT BE INCLUDED WITH ALL UNITS. SQUARE FOOTAGES, CEILING HEIGHTS, DOOR SIZES AND TERRACE DIMENSIONS ARE APPROXIMATE, SUBJECT TO CHANGE AND MAY VARY WITH ACTUAL CONSTRUCTION. CEILING HEIGHTS ARE MEASURED FROM TOP OF SLAB TO TOP OF SLAB. AS A RESULT, ACTUAL CLEARANCE BETWEEN THE TOP OF THE FINISHED FLOOR COVERINGS AND THE UNDERSIDE OF THE FINISHED CEILING, DROP CEILING OR SOFFITS WILL BE LESS. DEVELOPER MAKES NO REPRESENTATIONS REGARDING VIEWS FROM ANY PARTICULAR UNIT. YOUR PURCHASE AGREEMENT WILL DETAIL ITEMS INCLUDED WITH THE UNIT. STORAGE AND PRIVATE GARAGES ARE LIMITED AND NOT INCLUDED WITH ALL UNITS. DEVELOPER RESERVES THE RIGHT TO SELECT, RETAIN, REMOVE AND/OR CHANGE ANY PARTICULAR DESIGN OR CONSTRUCTION PROFESSIONAL (E.G., ARCHITECT, CONTRACTOR, INTERIOR DESIGNER) INVOLVED IN THE DEVELOPMENT OR DESIGN OF THE CONDOMINIUM. WARNING: THE CALIFORNIA DEPARTMENT OF REAL ESTATE HAS NOT INSPECTED, EXAMINED, OR QUALIFIED THIS OFFERING. THE COMPLETE OFFERING TERMS ARE IN A CPS-12 APPLICATION AVAILABLE FROM THE OFFEROR. FILE NO. CP24-0033. THIS CONDOMINIUM HAS BEEN REGISTERED WITH THE MASSACHUSETTS BOARD OF REGISTRATION OF REAL ESTATE BROKERS AND SALESPERSONS F-1292-01-01. ARTIST'S RENDERING IMAGES.



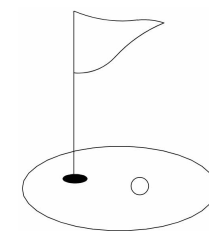
GLASS HOUSE BOCA RATON

UNIT 43

3 BR / 3.5 BATH
 UNIT AREA: 3,235 SF
 TERRACE AREA: 1,006 SF



← THE BOCA RATON RESORT AND GOLF COURSE

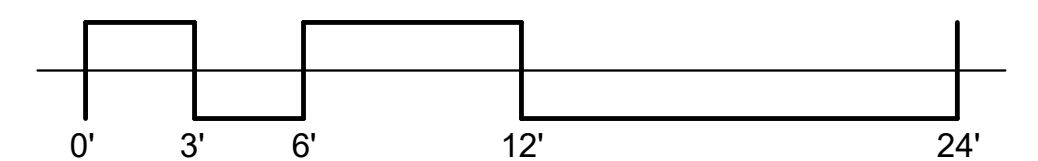


E PALMETTO PARK RD →



ORAL REPRESENTATIONS CANNOT BE RELIED UPON AS CORRECTLY STATING THE REPRESENTATIONS OF THE DEVELOPER. FOR CORRECT REPRESENTATIONS, MAKE REFERENCE TO THIS BROCHURE AND TO THE DOCUMENTS REQUIRED BY SECTION 718.503, FLORIDA STATUTES, TO BE FURNISHED BY A DEVELOPER TO A BUYER OR LESSEE.

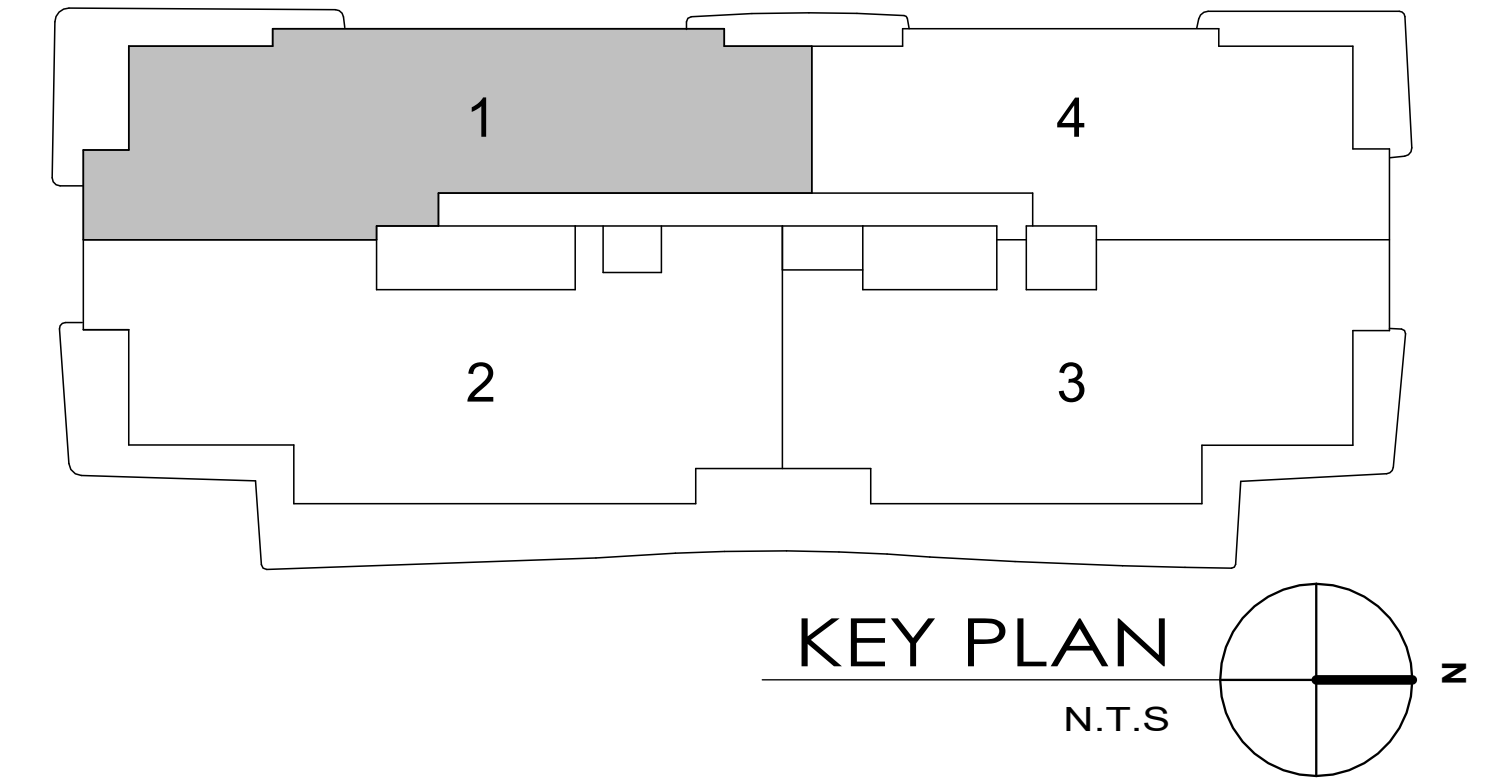
THIS OFFERING IS MADE ONLY BY THE PROSPECTUS FOR THE CONDOMINIUM AND NO STATEMENT SHOULD BE RELIED UPON IF NOT MADE IN THE PROSPECTUS. THIS IS NOT INTENDED TO BE AN OFFER TO SELL NOR A SOLICITATION OF OFFERS TO BUY IN ANY JURISDICTION WHERE PROHIBITED BY LAW, AND YOUR ELIGIBILITY FOR PURCHASE WILL DEPEND UPON YOUR STATE OF RESIDENCY. ALL FEATURES, SPECIFICATIONS, BRANDS, MATTERS OF DETAIL ARE CONCEPTUAL ONLY AND SHOULD NOT BE RELIED UPON AS REPRESENTATIONS, EXPRESS OR IMPLIED, OF THE FINAL DETAIL OF THE RESIDENCES OR CONDOMINIUM. 280 E PALMETTO PARK ROAD LLC, A FLORIDA LIMITED LIABILITY COMPANY ("DEVELOPER") EXPRESSLY RESERVES THE RIGHT TO MAKE MODIFICATIONS, REVISIONS, OMISSIONS, AND CHANGES WITHOUT NOTICE. CERTAIN FEATURES MAY NOT BE INCLUDED WITH ALL UNITS. SQUARE FOOTAGES, CEILING HEIGHTS, DOOR SIZES AND TERRACE DIMENSIONS ARE APPROXIMATE, SUBJECT TO CHANGE AND MAY VARY WITH ACTUAL CONSTRUCTION. CEILING HEIGHTS ARE MEASURED FROM TOP OF SLAB TO TOP OF SLAB. AS A RESULT, ACTUAL CLEARANCE BETWEEN THE TOP OF THE FINISHED FLOOR COVERINGS AND THE UNDERSIDE OF THE FINISHED CEILING, DROP CEILING OR SOFFITS WILL BE LESS. DEVELOPER MAKES NO REPRESENTATIONS REGARDING VIEWS FROM ANY PARTICULAR UNIT. YOUR PURCHASE AGREEMENT WILL DETAIL ITEMS INCLUDED WITH THE UNIT. STORAGE AND PRIVATE GARAGES ARE LIMITED AND NOT INCLUDED WITH ALL UNITS. DEVELOPER RESERVES THE RIGHT TO SELECT, RETAIN, REMOVE AND/OR CHANGE ANY PARTICULAR DESIGN OR CONSTRUCTION PROFESSIONAL (E.G., ARCHITECT, CONTRACTOR, INTERIOR DESIGNER) INVOLVED IN THE DEVELOPMENT OR DESIGN OF THE CONDOMINIUM. WARNING: THE CALIFORNIA DEPARTMENT OF REAL ESTATE HAS NOT INSPECTED, EXAMINED, OR QUALIFIED THIS OFFERING. THE COMPLETE OFFERING TERMS ARE IN A CPS-12 APPLICATION AVAILABLE FROM THE OFFEROR. FILE NO. CP24-0033. THIS CONDOMINIUM HAS BEEN REGISTERED WITH THE MASSACHUSETTS BOARD OF REGISTRATION OF REAL ESTATE BROKERS AND SALESPERSONS F-1292-01-01. ARTIST'S RENDERING IMAGES.



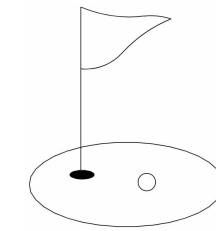
GLASS HOUSE BOCA RATON

UNIT 51

3 BR / 3.5 BATH
 UNIT AREA: 3,085 SF
 TERRACE AREA: 413 SF



← THE BOCA RATON RESORT AND GOLF COURSE

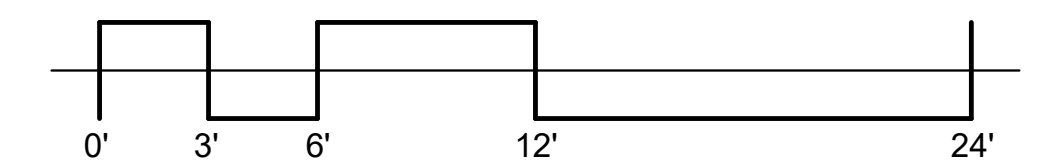


E PALMETTO PARK RD →



ORAL REPRESENTATIONS CANNOT BE RELIED UPON AS CORRECTLY STATING THE REPRESENTATIONS OF THE DEVELOPER. FOR CORRECT REPRESENTATIONS, MAKE REFERENCE TO THIS BROCHURE AND TO THE DOCUMENTS REQUIRED BY SECTION 718.503, FLORIDA STATUTES, TO BE FURNISHED BY A DEVELOPER TO A BUYER OR LESSEE.

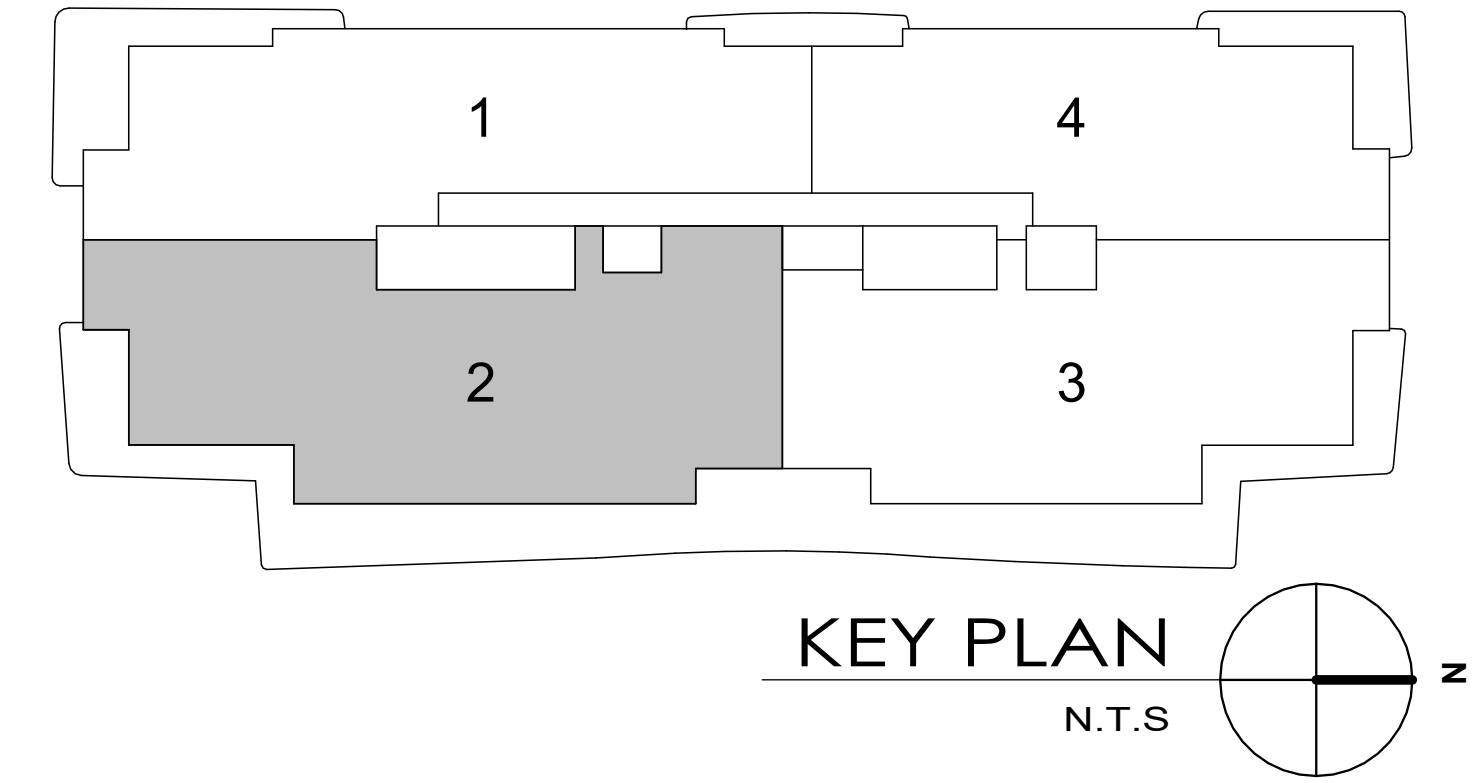
THIS OFFERING IS MADE ONLY BY THE PROSPECTUS FOR THE CONDOMINIUM AND NO STATEMENT SHOULD BE RELIED UPON IF NOT MADE IN THE PROSPECTUS. THIS IS NOT INTENDED TO BE AN OFFER TO SELL NOR A SOLICITATION OF OFFERS TO BUY IN ANY JURISDICTION WHERE PROHIBITED BY LAW, AND YOUR ELIGIBILITY FOR PURCHASE WILL DEPEND UPON YOUR STATE OF RESIDENCY. ALL FEATURES, SPECIFICATIONS, BRANDS, MATTERS OF DETAIL ARE CONCEPTUAL ONLY AND SHOULD NOT BE RELIED UPON AS REPRESENTATIONS, EXPRESS OR IMPLIED, OF THE FINAL DETAIL OF THE RESIDENCES OR CONDOMINIUM. 280 E PALMETTO PARK ROAD LLC, A FLORIDA LIMITED LIABILITY COMPANY ("DEVELOPER") EXPRESSLY RESERVES THE RIGHT TO MAKE MODIFICATIONS, REVISIONS, OMISSIONS, AND CHANGES WITHOUT NOTICE. CERTAIN FEATURES MAY NOT BE INCLUDED WITH ALL UNITS. SQUARE FOOTAGES, CEILING HEIGHTS, DOOR SIZES AND TERRACE DIMENSIONS ARE APPROXIMATE, SUBJECT TO CHANGE AND MAY VARY WITH ACTUAL CONSTRUCTION. CEILING HEIGHTS ARE MEASURED FROM TOP OF SLAB TO TOP OF SLAB. AS A RESULT, ACTUAL CLEARANCE BETWEEN THE TOP OF THE FINISHED FLOOR COVERINGS AND THE UNDERSIDE OF THE FINISHED CEILING, DROP CEILING OR SOFFITS WILL BE LESS. DEVELOPER MAKES NO REPRESENTATIONS REGARDING VIEWS FROM ANY PARTICULAR UNIT. YOUR PURCHASE AGREEMENT WILL DETAIL ITEMS INCLUDED WITH THE UNIT. STORAGE AND PRIVATE GARAGES ARE LIMITED AND NOT INCLUDED WITH ALL UNITS. DEVELOPER RESERVES THE RIGHT TO SELECT, RETAIN, REMOVE AND/OR CHANGE ANY PARTICULAR DESIGN OR CONSTRUCTION PROFESSIONAL (E.G., ARCHITECT, CONTRACTOR, INTERIOR DESIGNER) INVOLVED IN THE DEVELOPMENT OR DESIGN OF THE CONDOMINIUM. WARNING: THE CALIFORNIA DEPARTMENT OF REAL ESTATE HAS NOT INSPECTED, EXAMINED, OR QUALIFIED THIS OFFERING. THE COMPLETE OFFERING TERMS ARE IN A CPS-12 APPLICATION AVAILABLE FROM THE OFFEROR. FILE NO. CP24-0033. THIS CONDOMINIUM HAS BEEN REGISTERED WITH THE MASSACHUSETTS BOARD OF REGISTRATION OF REAL ESTATE BROKERS AND SALESPERSONS F-1292-01-01. ARTIST'S RENDERING IMAGES.



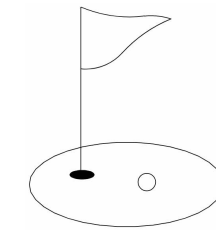
GLASS HOUSE BOCA RATON

UNIT 52

3 BR / 3.5 BATH
 UNIT AREA: 3,320 SF
 TERRACE AREA: 1,188 SF



← THE BOCA RATON RESORT AND GOLF COURSE

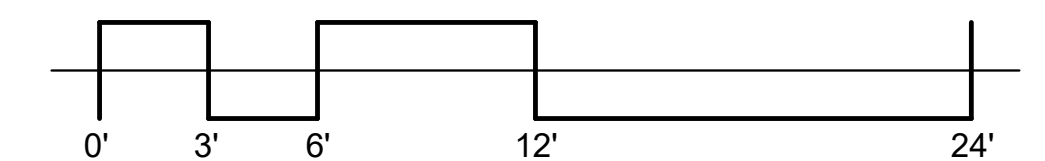


E PALMETTO PARK RD →



ORAL REPRESENTATIONS CANNOT BE RELIED UPON AS CORRECTLY STATING THE REPRESENTATIONS OF THE DEVELOPER. FOR CORRECT REPRESENTATIONS, MAKE REFERENCE TO THIS BROCHURE AND TO THE DOCUMENTS REQUIRED BY SECTION 718.503, FLORIDA STATUTES, TO BE FURNISHED BY A DEVELOPER TO A BUYER OR LESSEE.

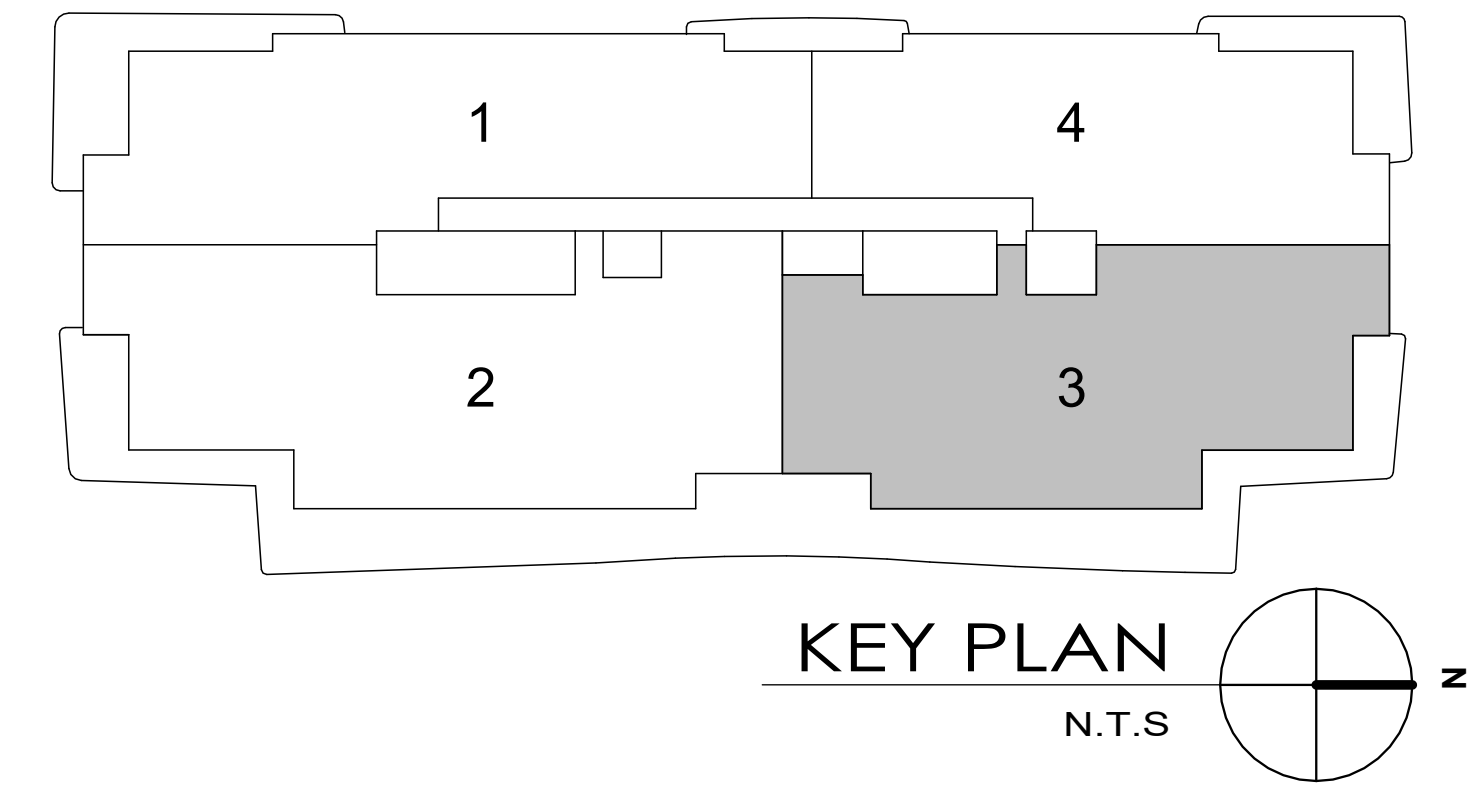
THIS OFFERING IS MADE ONLY BY THE PROSPECTUS FOR THE CONDOMINIUM AND NO STATEMENT SHOULD BE RELIED UPON IF NOT MADE IN THE PROSPECTUS. THIS IS NOT INTENDED TO BE AN OFFER TO SELL NOR A SOLICITATION OF OFFERS TO BUY IN ANY JURISDICTION WHERE PROHIBITED BY LAW, AND YOUR ELIGIBILITY FOR PURCHASE WILL DEPEND UPON YOUR STATE OF RESIDENCY. ALL FEATURES, SPECIFICATIONS, BRANDS, MATTERS OF DETAIL ARE CONCEPTUAL ONLY AND SHOULD NOT BE RELIED UPON AS REPRESENTATIONS, EXPRESS OR IMPLIED, OF THE FINAL DETAIL OF THE RESIDENCES OR CONDOMINIUM. 280 E PALMETTO PARK ROAD LLC, A FLORIDA LIMITED LIABILITY COMPANY ("DEVELOPER") EXPRESSLY RESERVES THE RIGHT TO MAKE MODIFICATIONS, REVISIONS, OMISSIONS, AND CHANGES WITHOUT NOTICE. CERTAIN FEATURES MAY NOT BE INCLUDED WITH ALL UNITS. SQUARE FOOTAGES, CEILING HEIGHTS, DOOR SIZES AND TERRACE DIMENSIONS ARE APPROXIMATE, SUBJECT TO CHANGE AND MAY VARY WITH ACTUAL CONSTRUCTION. CEILING HEIGHTS ARE MEASURED FROM TOP OF SLAB TO TOP OF SLAB. AS A RESULT, ACTUAL CLEARANCE BETWEEN THE TOP OF THE FINISHED FLOOR COVERINGS AND THE UNDERSIDE OF THE FINISHED CEILING, DROP CEILING OR SOFFITS WILL BE LESS. DEVELOPER MAKES NO REPRESENTATIONS REGARDING VIEWS FROM ANY PARTICULAR UNIT. YOUR PURCHASE AGREEMENT WILL DETAIL ITEMS INCLUDED WITH THE UNIT. STORAGE AND PRIVATE GARAGES ARE LIMITED AND NOT INCLUDED WITH ALL UNITS. DEVELOPER RESERVES THE RIGHT TO SELECT, RETAIN, REMOVE AND/OR CHANGE ANY PARTICULAR DESIGN OR CONSTRUCTION PROFESSIONAL (E.G., ARCHITECT, CONTRACTOR, INTERIOR DESIGNER) INVOLVED IN THE DEVELOPMENT OR DESIGN OF THE CONDOMINIUM. WARNING: THE CALIFORNIA DEPARTMENT OF REAL ESTATE HAS NOT INSPECTED, EXAMINED, OR QUALIFIED THIS OFFERING. THE COMPLETE OFFERING TERMS ARE IN A CPS-12 APPLICATION AVAILABLE FROM THE OFFEROR. FILE NO. CP24-0033. THIS CONDOMINIUM HAS BEEN REGISTERED WITH THE MASSACHUSETTS BOARD OF REGISTRATION OF REAL ESTATE BROKERS AND SALESPERSONS F-1292-01-01. ARTIST'S RENDERING IMAGES.



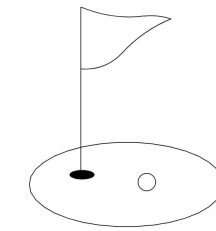
GLASS HOUSE BOCA RATON

UNIT 53

3 BR / 3.5 BATH
 UNIT AREA: 2,800 SF
 TERRACE AREA: 994 SF



← THE BOCA RATON RESORT AND GOLF COURSE



E PALMETTO PARK RD →



ORAL REPRESENTATIONS CANNOT BE RELIED UPON AS CORRECTLY STATING THE REPRESENTATIONS OF THE DEVELOPER. FOR CORRECT REPRESENTATIONS, MAKE REFERENCE TO THIS BROCHURE AND TO THE DOCUMENTS REQUIRED BY SECTION 718.503, FLORIDA STATUTES, TO BE FURNISHED BY A DEVELOPER TO A BUYER OR LESSEE.

THIS OFFERING IS MADE ONLY BY THE PROSPECTUS FOR THE CONDOMINIUM AND NO STATEMENT SHOULD BE RELIED UPON IF NOT MADE IN THE PROSPECTUS. THIS IS NOT INTENDED TO BE AN OFFER TO SELL NOR A SOLICITATION OF OFFERS TO BUY IN ANY JURISDICTION WHERE PROHIBITED BY LAW, AND YOUR ELIGIBILITY FOR PURCHASE WILL DEPEND UPON YOUR STATE OF RESIDENCY. ALL FEATURES, SPECIFICATIONS, BRANDS, MATTERS OF DETAIL ARE CONCEPTUAL ONLY AND SHOULD NOT BE RELIED UPON AS REPRESENTATIONS, EXPRESS OR IMPLIED, OF THE FINAL DETAIL OF THE RESIDENCES OR CONDOMINIUM. 280 E PALMETTO PARK ROAD LLC, A FLORIDA LIMITED LIABILITY COMPANY ("DEVELOPER") EXPRESSLY RESERVES THE RIGHT TO MAKE MODIFICATIONS, REVISIONS, OMISSIONS, AND CHANGES WITHOUT NOTICE. CERTAIN FEATURES MAY NOT BE INCLUDED WITH ALL UNITS. SQUARE FOOTAGES, CEILING HEIGHTS, DOOR SIZES AND TERRACE DIMENSIONS ARE APPROXIMATE, SUBJECT TO CHANGE AND MAY VARY WITH ACTUAL CONSTRUCTION. CEILING HEIGHTS ARE MEASURED FROM TOP OF SLAB TO TOP OF SLAB. AS A RESULT, ACTUAL CLEARANCE BETWEEN THE TOP OF THE FINISHED FLOOR COVERINGS AND THE UNDERSIDE OF THE FINISHED CEILING, DROP CEILING OR SOFFITS WILL BE LESS. DEVELOPER MAKES NO REPRESENTATIONS REGARDING VIEWS FROM ANY PARTICULAR UNIT. YOUR PURCHASE AGREEMENT WILL DETAIL ITEMS INCLUDED WITH THE UNIT. STORAGE AND PRIVATE GARAGES ARE LIMITED AND NOT INCLUDED WITH ALL UNITS. DEVELOPER RESERVES THE RIGHT TO SELECT, RETAIN, REMOVE AND/OR CHANGE ANY PARTICULAR DESIGN OR CONSTRUCTION PROFESSIONAL (E.G., ARCHITECT, CONTRACTOR, INTERIOR DESIGNER) INVOLVED IN THE DEVELOPMENT OR DESIGN OF THE CONDOMINIUM. WARNING: THE CALIFORNIA DEPARTMENT OF REAL ESTATE HAS NOT INSPECTED, EXAMINED, OR QUALIFIED THIS OFFERING. THE COMPLETE OFFERING TERMS ARE IN A CPS-12 APPLICATION AVAILABLE FROM THE OFFEROR. FILE NO. CP24-0033. THIS CONDOMINIUM HAS BEEN REGISTERED WITH THE MASSACHUSETTS BOARD OF REGISTRATION OF REAL ESTATE BROKERS AND SALESPERSONS F-1292-01-01. ARTIST'S RENDERING IMAGES.

