

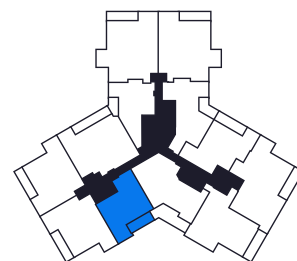
# PORTOFINO

FLOORS 2 - 16



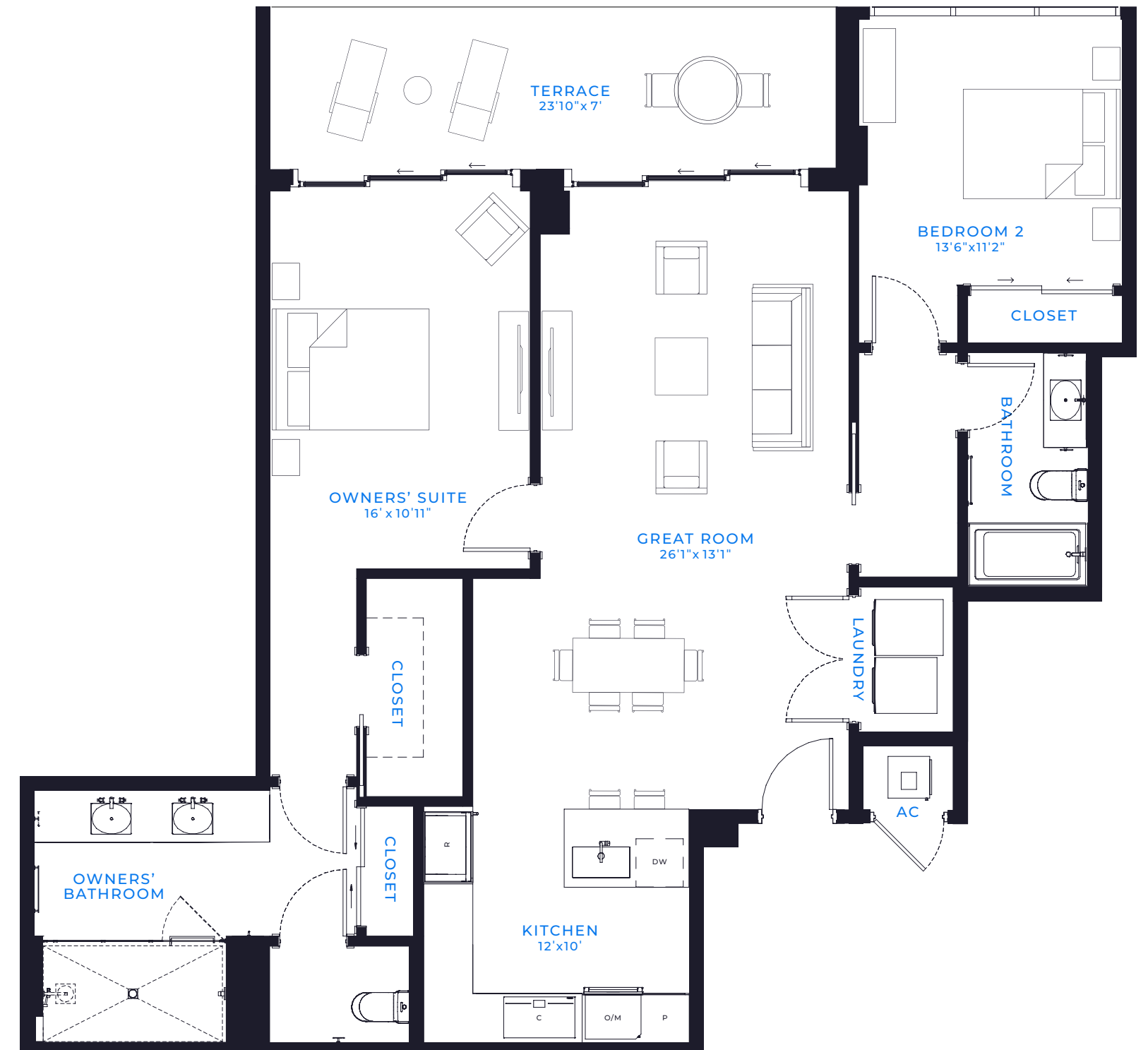
2 BED / 2 BATH

AIR CONDITIONED: 1,239 SQ. FT.  
 TERRACE: 164 SQ. FT.  
**TOTAL LIVING SPACE: 1,403 SQ. FT.**  
**130 SQ. MT.**



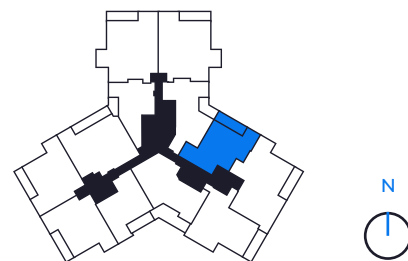
There are various methods for calculating the total square footage of a condominium unit, and depending on the method of calculation, the quoted square footage of a condominium unit may vary by more than a nominal amount. The dimensions as shown are measured to the exterior boundaries of the exterior walls and the centerline of interior demising walls and, in fact, are larger than the dimensions of the "Unit" as defined in the Declaration of Condominium for each tower of Marina Pointe which is measured using interior measurements.

# CANNES



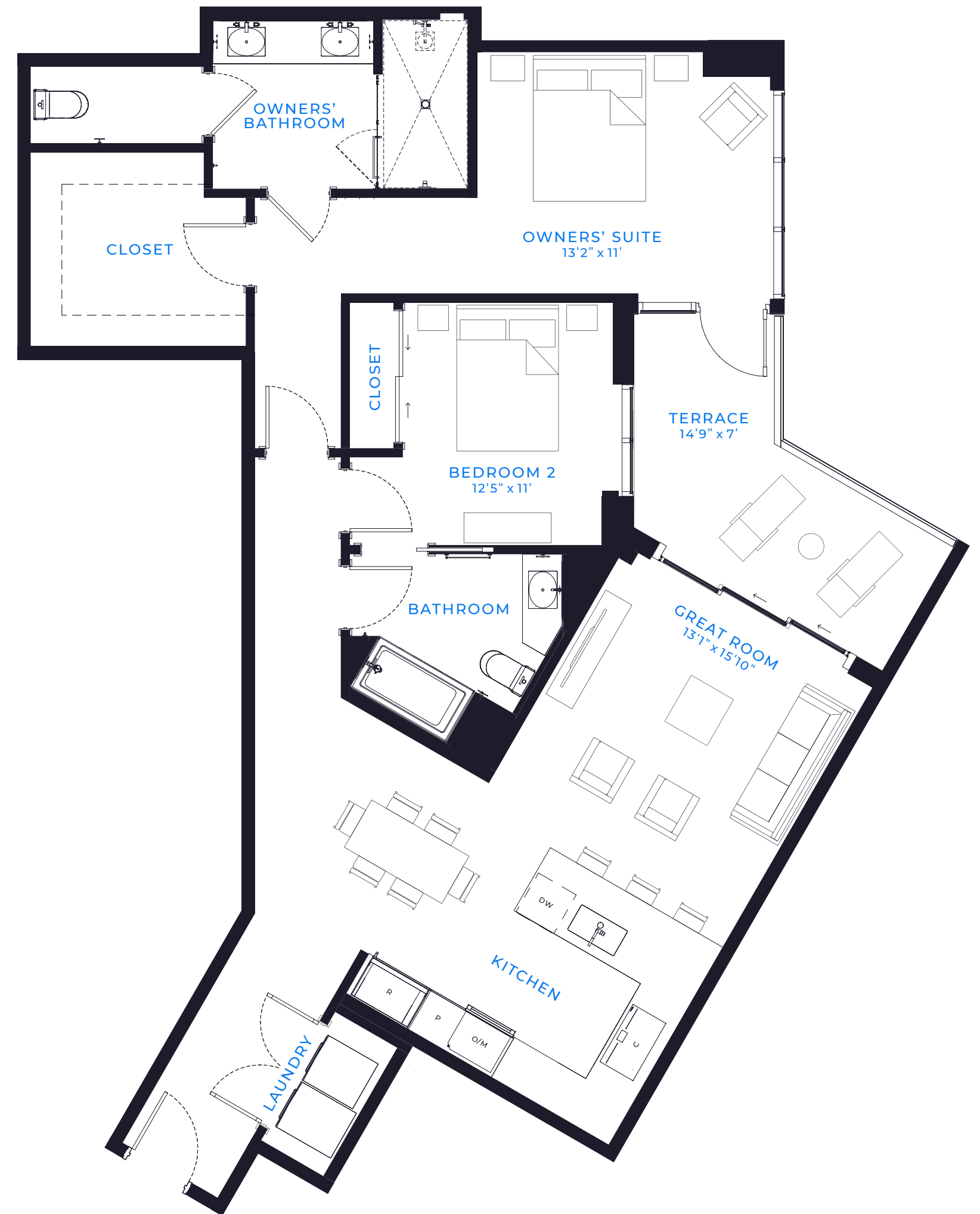
## 2 BED / 2 BATH

AIR CONDITIONED: 1,311 SQ. FT.  
 TERRACE: 170 SQ. FT.  
**TOTAL LIVING SPACE: 1,481 SQ. FT.**  
**137 SQ. MT.**



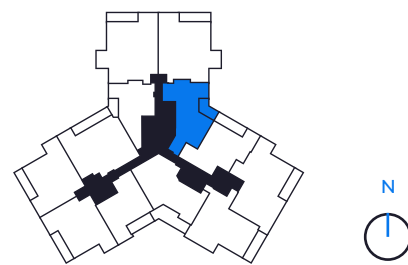
There are various methods for calculating the total square footage of a condominium unit, and depending on the method of calculation, the quoted square footage of a condominium unit may vary by more than a nominal amount. The dimensions as shown are measured to the exterior boundaries of the exterior walls and the centerline of interior demising walls and, in fact, are larger than the dimensions of the "Unit" as defined in the Declaration of Condominium for each tower of Marina Pointe which is measured using interior measurements.

# CAPRI



## 2 BED / 2 BATH

AIR CONDITIONED: 1,344 SQ. FT.  
TERRACE: 134 SQ. FT.  
TOTAL LIVING SPACE: 1,478 SQ. FT.  
137 SQ. MT.



There are various methods for calculating the total square footage of a condominium unit, and depending on the method of calculation, the quoted square footage of a condominium unit may vary by more than a nominal amount. The dimensions as shown are measured to the exterior boundaries of the exterior walls and the centerline of interior demising walls and, in fact, are larger than the dimensions of the "Unit" as defined in the Declaration of Condominium for each tower of Marina Point which is measured using interior measurements.

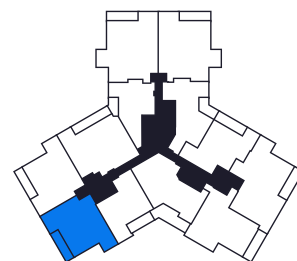
# CASSIS

FLOORS 2 - 4



## 2 BED / 2.5 BATH

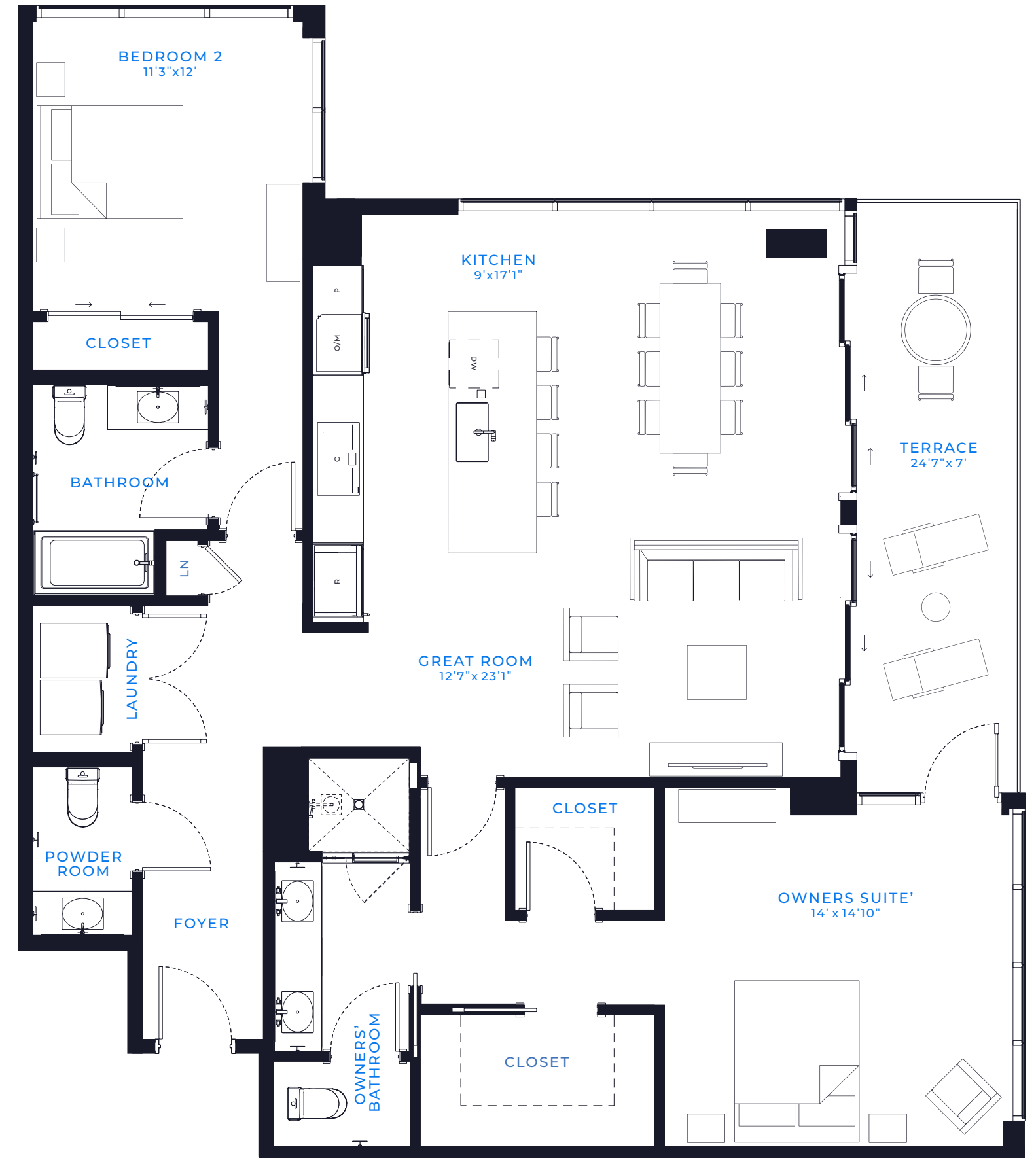
AIR CONDITIONED: 1,457 SQ. FT.  
 TERRACE: 171 SQ. FT.  
**TOTAL LIVING SPACE: 1,628 SQ. FT.**  
 151 SQ. MT.



There are various methods for calculating the total square footage of a condominium unit, and depending on the method of calculation, the quoted square footage of a condominium unit may vary by more than a nominal amount. The dimensions as shown are measured to the exterior boundaries of the exterior walls and the centerline of interior demising walls and, in fact, are larger than the dimensions of the "Unit" as defined in the Declaration of Condominium for each tower of Marina Pointe which is measured using interior measurements.

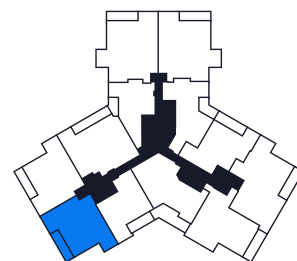
# CORSICA

FLOORS 5 - 16



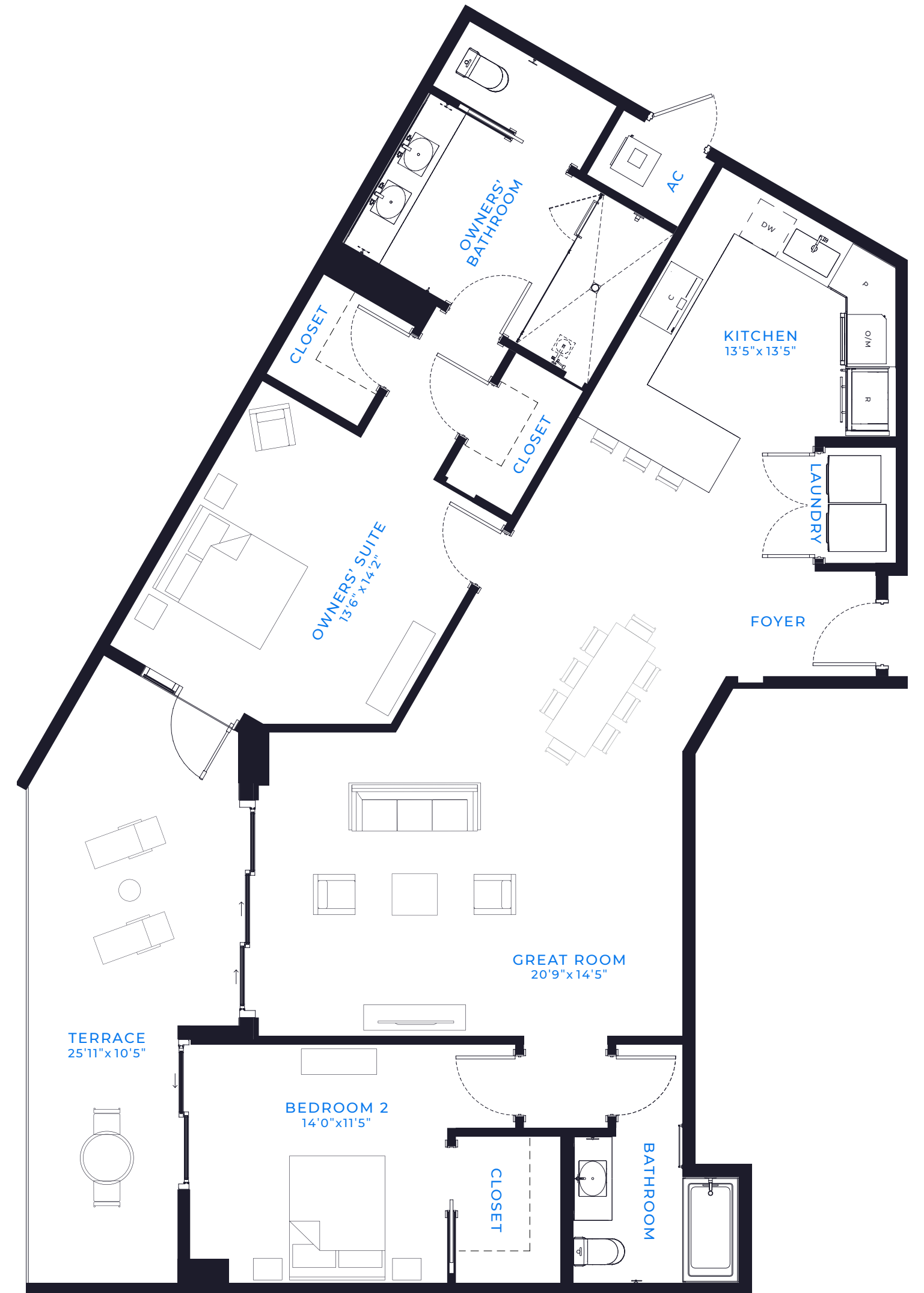
## 2 BED / 2.5 BATH

AIR CONDITIONED: 1,526 SQ. FT.  
TERRACE: 171 SQ. FT.  
**TOTAL LIVING SPACE: 1,697 SQ. FT.**  
157 SQ. MT.



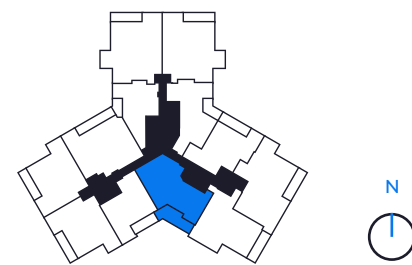
There are various methods for calculating the total square footage of a condominium unit, and depending on the method of calculation, the quoted square footage of a condominium unit may vary by more than a nominal amount. The dimensions as shown are measured to the exterior boundaries of the exterior walls and the centerline of interior demising walls and, in fact, are larger than the dimensions of the "Unit" as defined in the Declaration of Condominium for each tower of Marina Pointe which is measured using interior measurements.

# VALENCIA



## 2 BED / 2 BATH

AIR CONDITIONED: 1,529 SQ. FT.  
 TERRACE: 251 SQ. FT.  
**TOTAL LIVING SPACE: 1,780 SQ. FT.**  
 165 SQ. MT.



There are various methods for calculating the total square footage of a condominium unit, and depending on the method of calculation, the quoted square footage of a condominium unit may vary by more than a nominal amount. The dimensions as shown are measured to the exterior boundaries of the exterior walls and the centerline of interior demising walls and, in fact, are larger than the dimensions of the "Unit" as defined in the Declaration of Condominium for each tower of Marina Point which is measured using interior measurements.

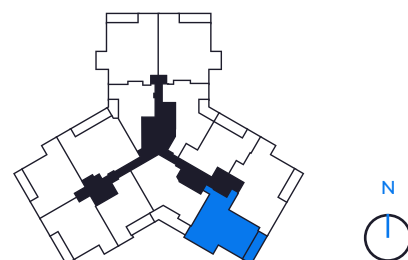
# MARSEILLE II

FLOORS 2 - 4



## 2 BED / 2.5 BATH

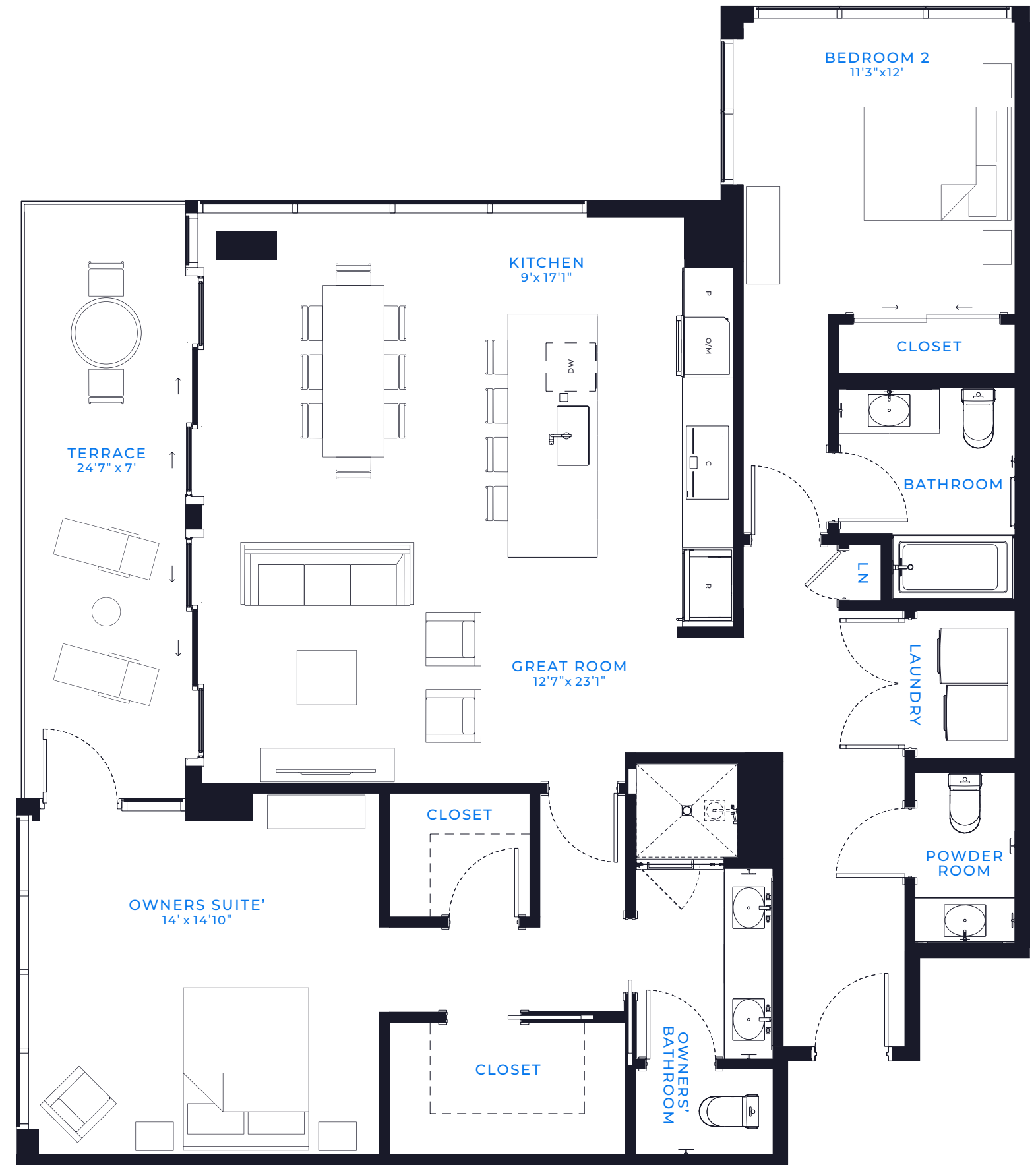
AIR CONDITIONED: 1,753 SQ. FT.  
 TERRACE: 196 SQ. FT.  
**TOTAL LIVING SPACE: 1,949 SQ. FT.**  
 181 SQ. MT.



There are various methods for calculating the total square footage of a condominium unit, and depending on the method of calculation, the quoted square footage of a condominium unit may vary by more than a nominal amount. The dimensions as shown are measured to the exterior boundaries of the exterior walls and the centerline of interior demising walls and, in fact, are larger than the dimensions of the "Unit" as defined in the Declaration of Condominium for each tower of Marina Pointe which is measured using interior measurements.

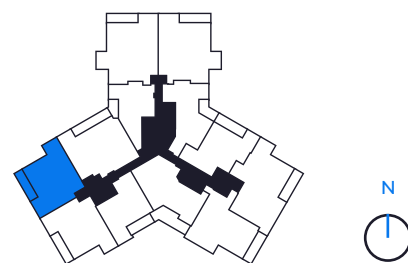
# SARDINIA

FLOORS 5 - 16



## 2 BED / 2.5 BATH

AIR CONDITIONED: 1,526 SQ. FT.  
 TERRACE: 171 SQ. FT.  
**TOTAL LIVING SPACE: 1,697 SQ. FT.**  
 157 SQ. MT.



There are various methods for calculating the total square footage of a condominium unit, and depending on the method of calculation, the quoted square footage of a condominium unit may vary by more than a nominal amount. The dimensions as shown are measured to the exterior boundaries of the exterior walls and the centerline of interior demising walls and, in fact, are larger than the dimensions of the "Unit" as defined in the Declaration of Condominium for each tower of Marina Pointe which is measured using interior measurements.