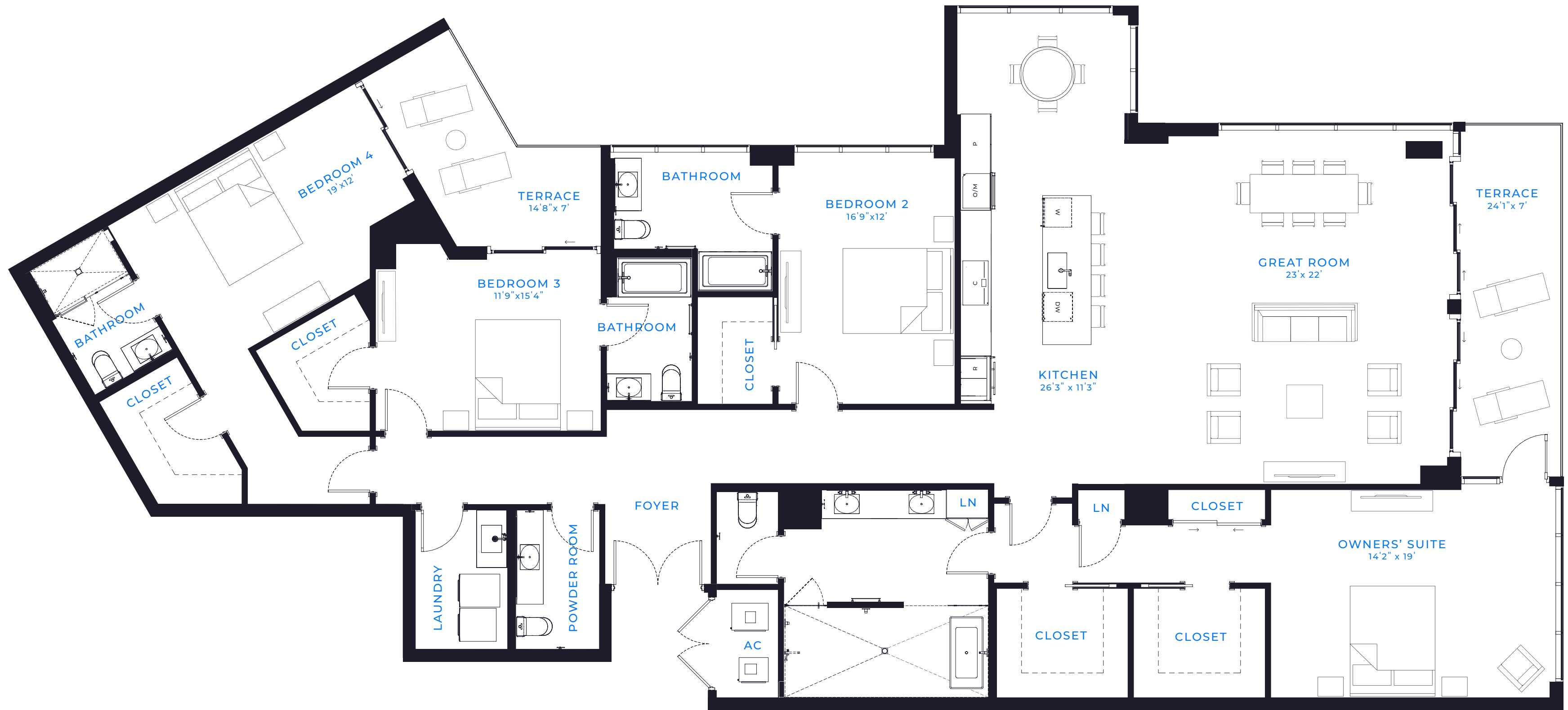


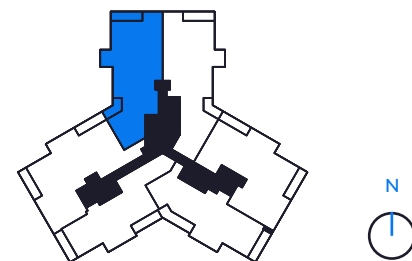
PENTHOUSE 2A

FLOOR 17



4 BED / 4.5 BATH

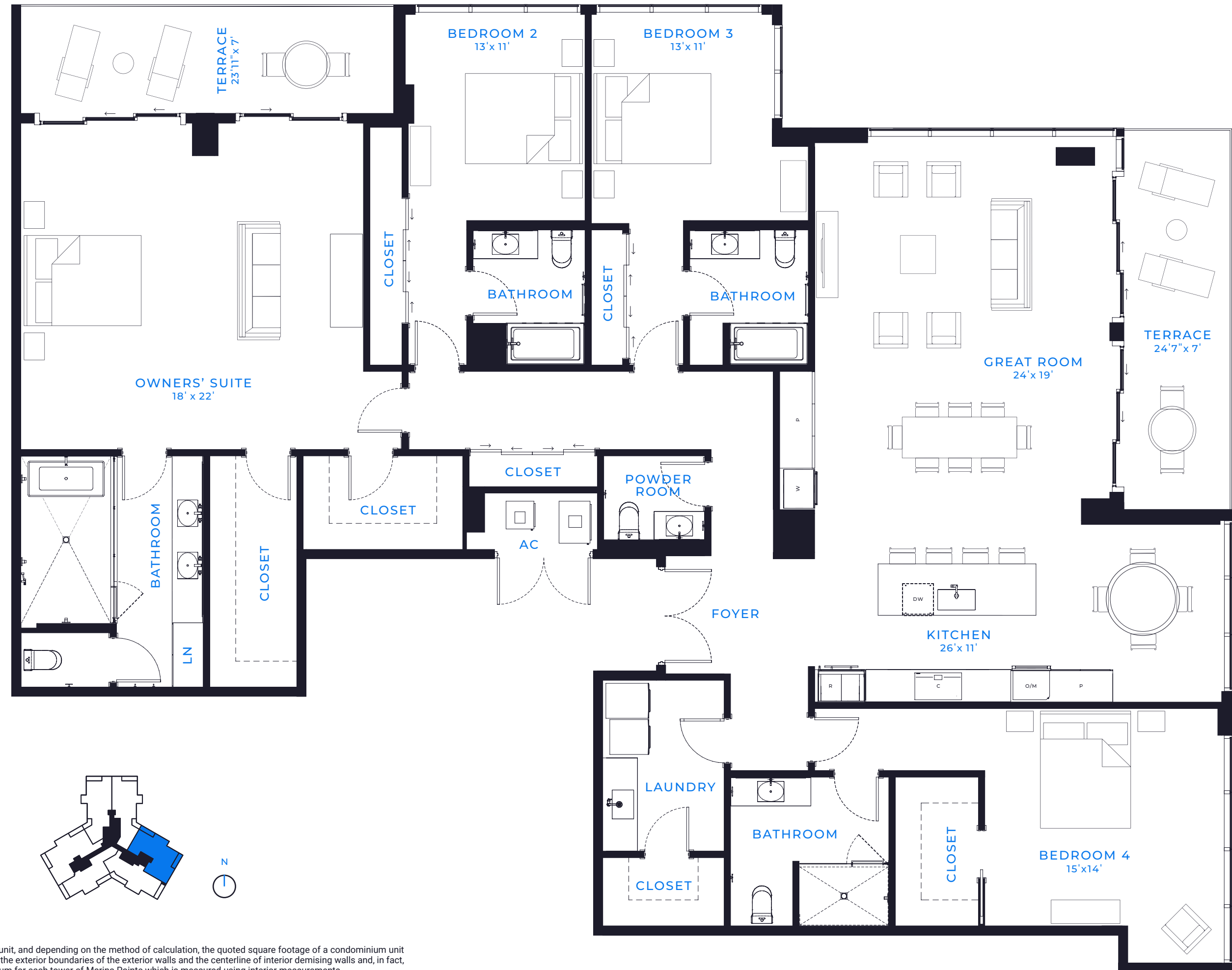
AIR CONDITIONED: 3,362 SQ. FT.
 TERRACE: 300 SQ. FT.
TOTAL LIVING SPACE: 3,662 SQ. FT.
340 SQ. MT.



There are various methods for calculating the total square footage of a condominium unit, and depending on the method of calculation, the quoted square footage of a condominium unit may vary by more than a nominal amount. The dimensions as shown are measured to the exterior boundaries of the exterior walls and the centerline of interior demising walls and, in fact, are larger than the dimensions of the "Unit" as defined in the Declaration of Condominium for each tower of Marina Pointe which is measured using interior measurements.

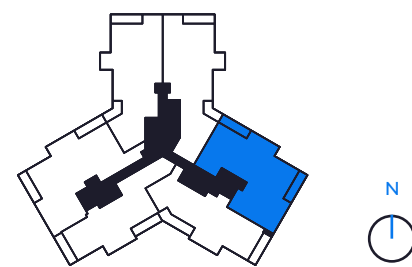
PENTHOUSE 2E

FLOOR 17



4 BED / 4.5 BATH

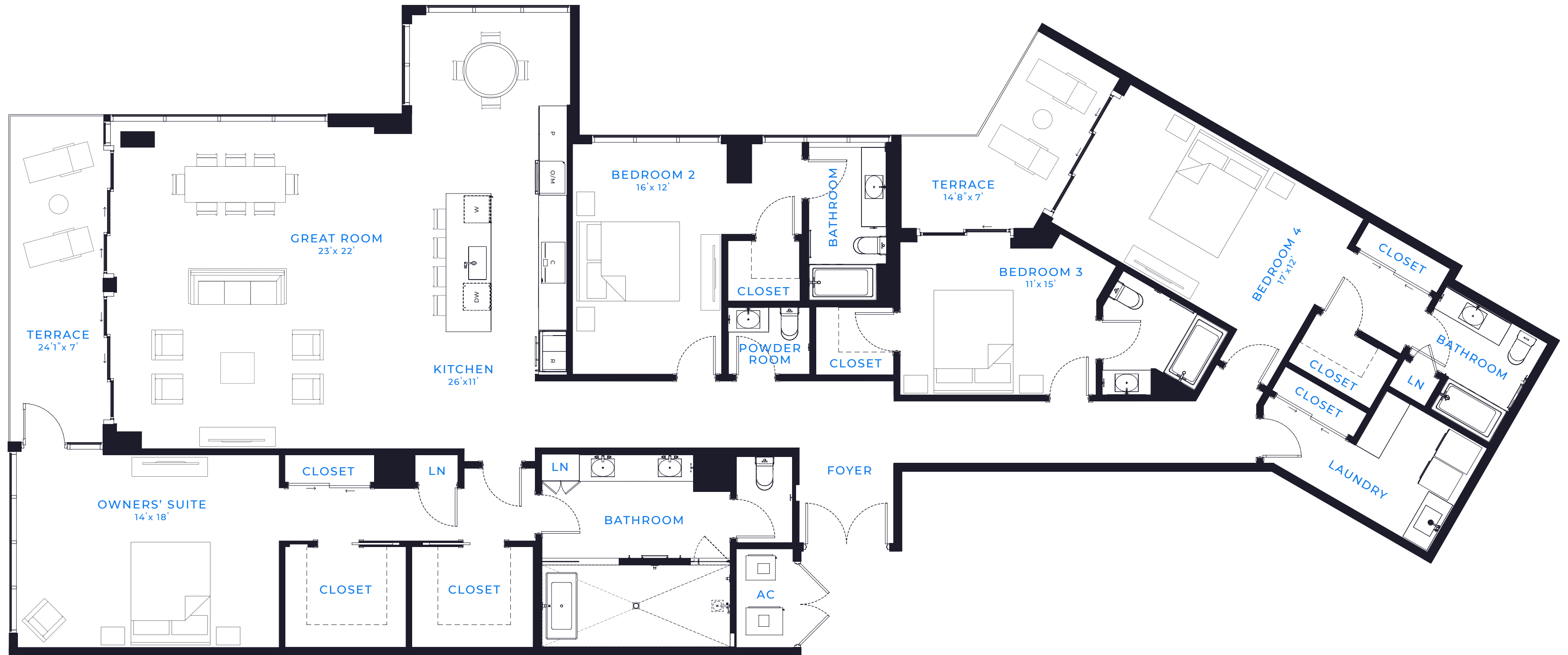
AIR CONDITIONED: 3,372 SQ. FT.
 TERRACE: 339 SQ. FT.
 TOTAL LIVING SPACE: 3,711 SQ. FT.
 344 SQ. MT.



There are various methods for calculating the total square footage of a condominium unit, and depending on the method of calculation, the quoted square footage of a condominium unit may vary by more than a nominal amount. The dimensions as shown are measured to the exterior boundaries of the exterior walls and the centerline of interior demising walls and, in fact, are larger than the dimensions of the "Unit" as defined in the Declaration of Condominium for each tower of Marina Point which is measured using interior measurements.

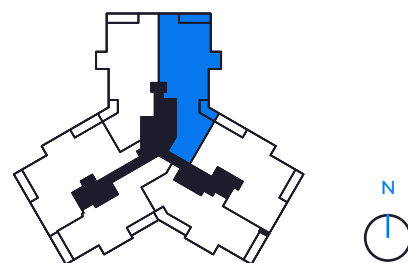
PENTHOUSE 2B

FLOOR 17



4 BED / 4.5 BATH

AIR CONDITIONED: 3,422 SQ. FT.
 TERRACE: 300 SQ. FT.
TOTAL LIVING SPACE: 3,722 SQ. FT.
345 SQ. MT.



There are various methods for calculating the total square footage of a condominium unit, and depending on the method of calculation, the quoted square footage of a condominium unit may vary by more than a nominal amount. The dimensions as shown are measured to the exterior boundaries of the exterior walls and the centerline of interior demising walls and, in fact, are larger than the dimensions of the "Unit" as defined in the Declaration of Condominium for each tower of Marina Pointe which is measured using interior measurements.

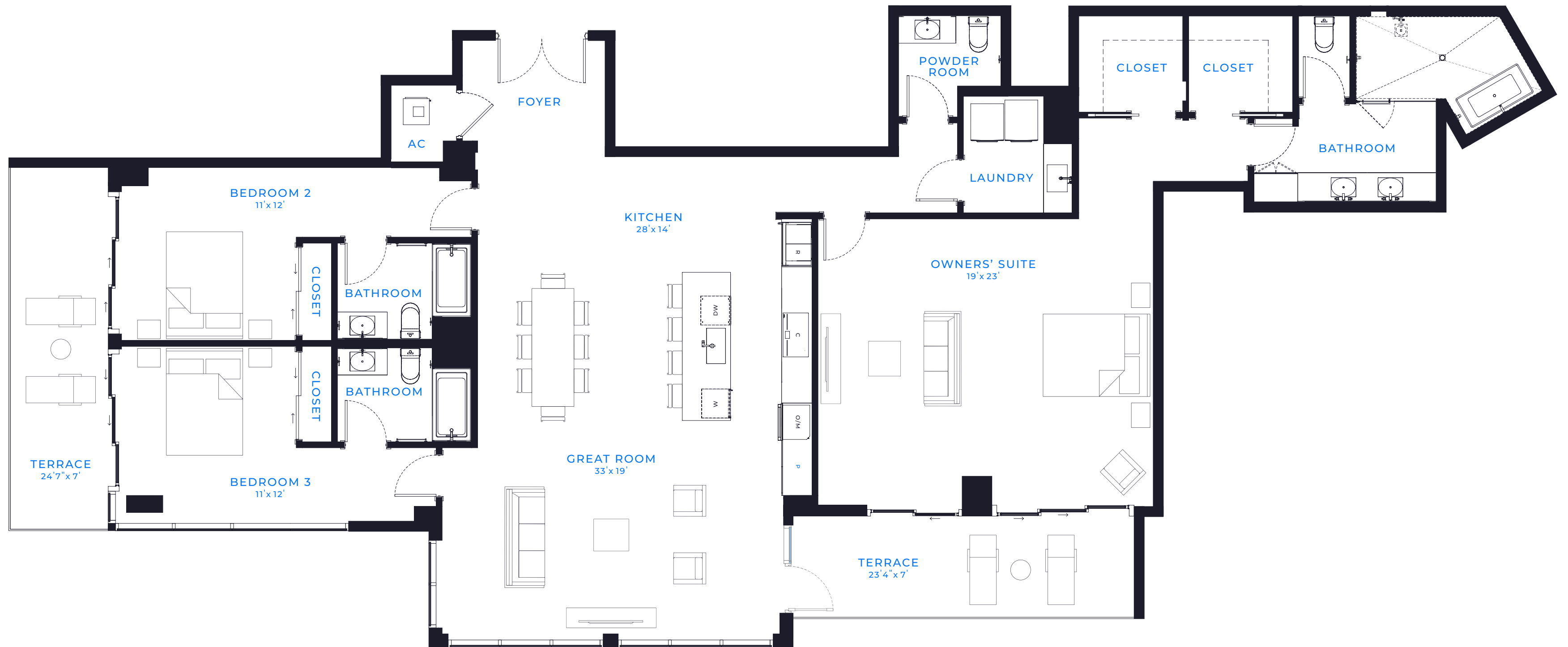
PENTHOUSE 2J

FLOOR 17



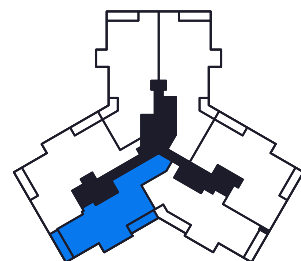
PENTHOUSE 21

FLOOR 17



3 BED / 3.5 BATH

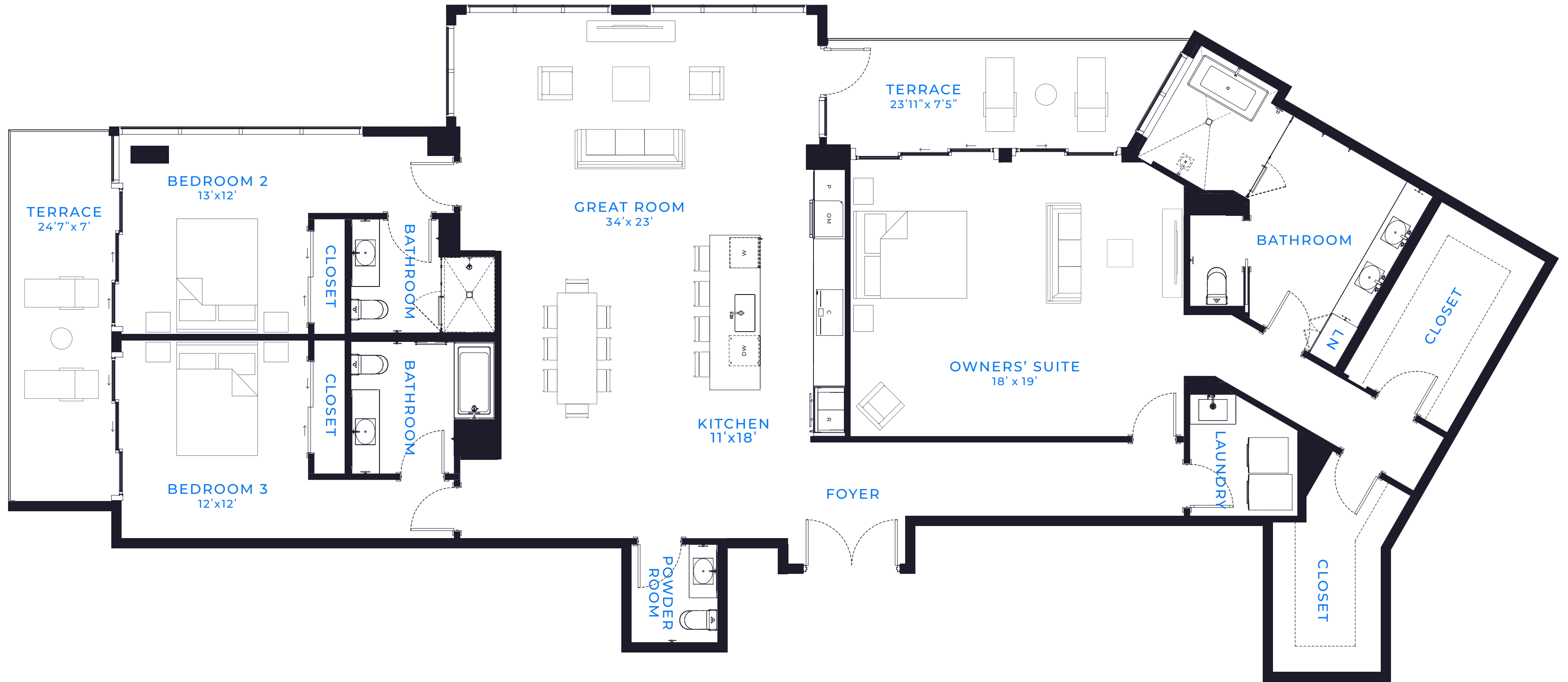
AIR CONDITIONED: 2,680 SQ. FT.
 TERRACE: 337 SQ. FT.
TOTAL LIVING SPACE: 3,017 SQ. FT.
280 SQ. MT.



There are various methods for calculating the total square footage of a condominium unit, and depending on the method of calculation, the quoted square footage of a condominium unit may vary by more than a nominal amount. The dimensions as shown are measured to the exterior boundaries of the exterior walls and the centerline of interior demising walls and, in fact, are larger than the dimensions of the "Unit" as defined in the Declaration of Condominium for each tower of Marina Pointe which is measured using interior measurements.

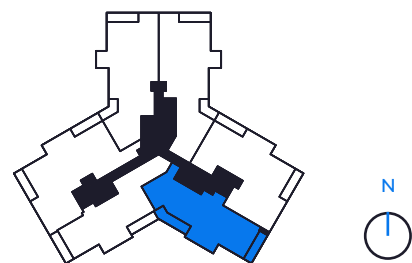
PENTHOUSE 2F

FLOOR 17



3 BED / 3.5 BATH

AIR CONDITIONED: 2,803 SQ. FT.
 TERRACE: 332 SQ. FT.
TOTAL LIVING SPACE: 3,135 SQ. FT.
 291 SQ. MT.



There are various methods for calculating the total square footage of a condominium unit, and depending on the method of calculation, the quoted square footage of a condominium unit may vary by more than a nominal amount. The dimensions as shown are measured to the exterior boundaries of the exterior walls and the centerline of interior demising walls and, in fact, are larger than the dimensions of the "Unit" as defined in the Declaration of Condominium for each tower of Marina Pointe which is measured using interior measurements.