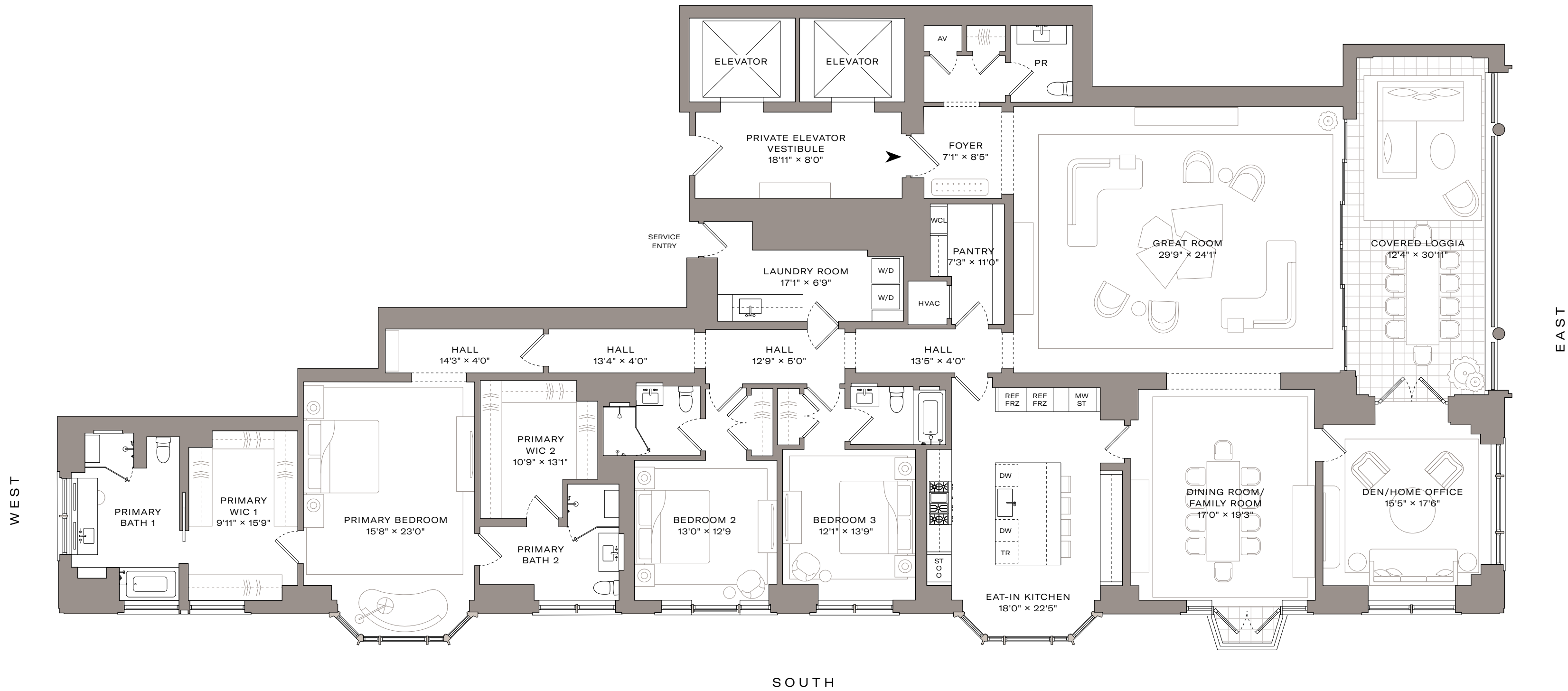
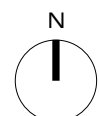
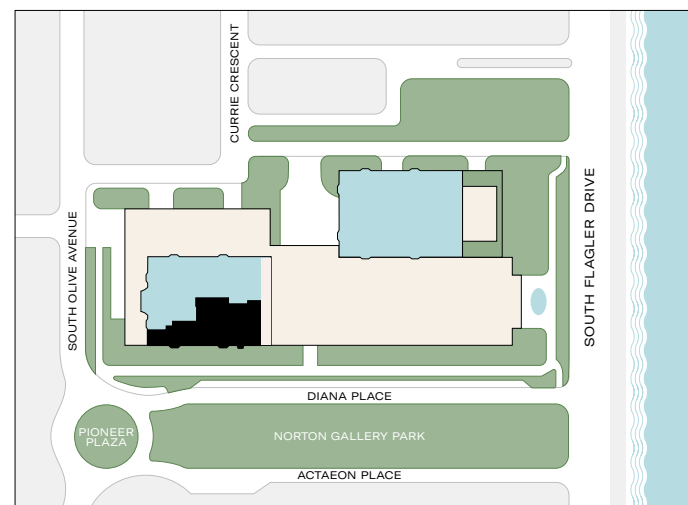
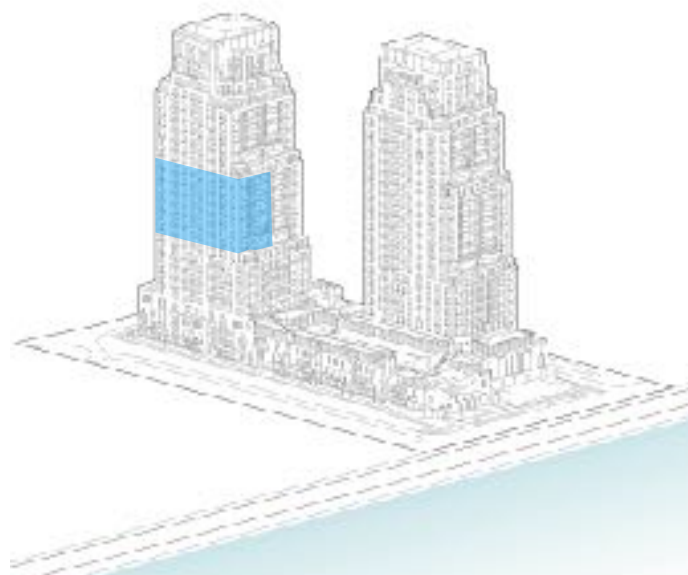


PARK TOWER ONLY

# Typical Tier 2 South Residence Floors 12-18

3 BEDROOMS  
4 BATHROOMS  
1 POWDER ROOM

INTERIOR AREA: 4,631 SQ. FT.  
EXTERIOR AREA: 446 SQ. FT.



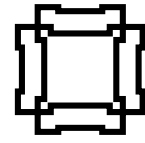
INTRACOASTAL / OCEAN



WE ARE PLEDGED TO THE LETTER AND SPIRIT OF THE U.S. POLICY FOR ACHIEVEMENT OF EQUAL HOUSING OPPORTUNITY THROUGHOUT THE NATION. WE ENCOURAGE AND SUPPORT AN AFFIRMATIVE ADVERTISING AND MARKETING PROGRAM IN WHICH THERE ARE NO BARRIERS TO OBTAINING HOUSING BECAUSE OF RACE, COLOR, RELIGION, SEX, HANDICAP, FAMILIAL STATUS OR NATIONAL ORIGIN. All depictions of appliances, fixtures, furnishings, counters, soffits, and other matters of detail, including, without limitation, items of finish and decoration, are conceptual only and are not necessarily included in each Unit. This is not an offer to sell, or solicitation of offers to buy, the condominium units in jurisdictions where such offer or solicitation cannot be made or are otherwise prohibited by law, and your eligibility for purchase will depend upon your state of residency. This offering is made only by the offering documents for the condominium and no statement should be relied upon if not made in the offering documents. The features, amenities, designs, design professionals, finishes and specifications are proposed only, and the Developer reserves the right to modify, substitute, revise or withdraw any or all of same in its sole discretion and without prior notice. The photographs contained in this brochure may be artists renderings or stock photography and are used to depict the spirit of the lifestyles to be achieved rather than any that may exist or that may be proposed and are merely intended as illustrations of the activities and concepts depicted therein. This Condominium is being developed by SFH Owner LLC ("Developer"). Any and all statements, disclosures and/or representations shall be deemed made by Developer and not Related Companies or any principal of the Related Companies and any purchaser agrees to look solely to Developer (and not to Related Companies and/or any of its affiliates or principals) with respect to any and all matters relating to the marketing and/or development of the Condominium and with respect to the sales of units in the Condominium.

ORAL REPRESENTATIONS CANNOT BE RELIED UPON AS CORRECTLY STATING THE REPRESENTATIONS OF THE DEVELOPER. FOR CORRECT REPRESENTATIONS, MAKE REFERENCE TO THIS BROCHURE AND TO THE DOCUMENTS REQUIRED BY SECTION 718.503, FLORIDA STATUTES, TO BE FURNISHED BY A DEVELOPER TO A BUYER OR LESSEE.



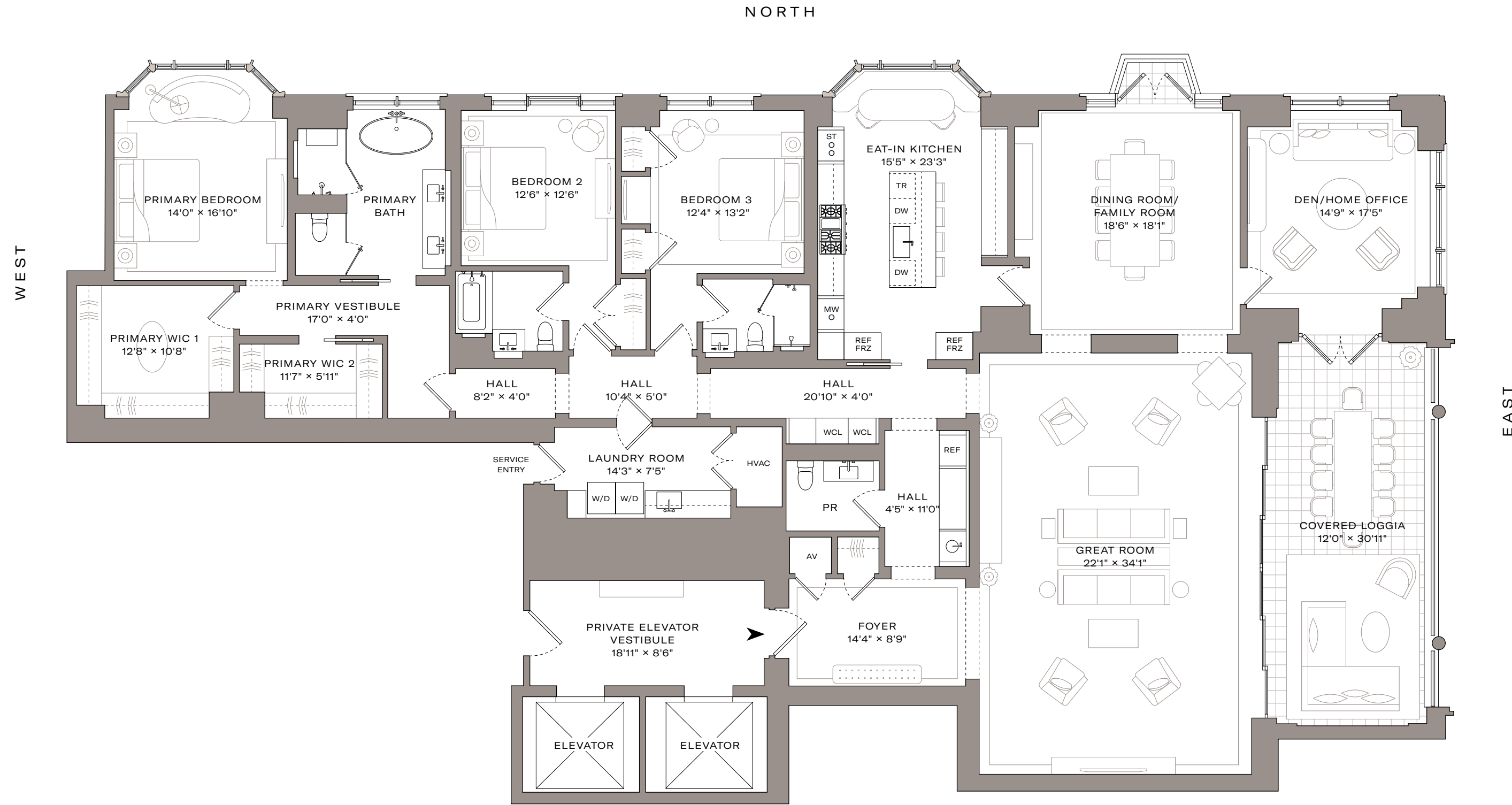
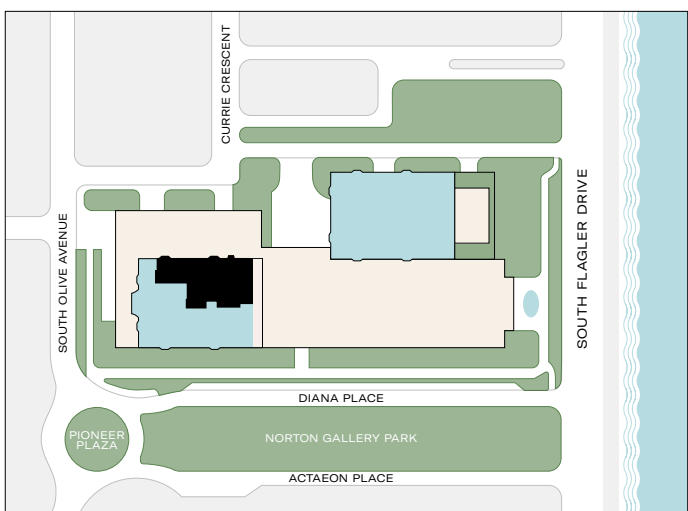
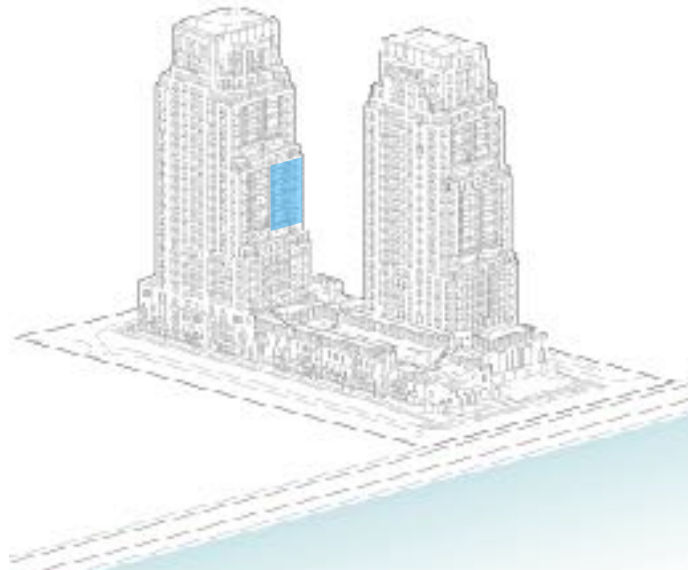


PARK TOWER ONLY

# Typical Tier 2 North Residence Floors 12-18

3 BEDROOMS  
3 BATHROOMS  
1 POWDER ROOM

INTERIOR AREA: 4,380 SQ. FT.  
EXTERIOR AREA: 446 SQ. FT.



INTRACOASTAL / OCEAN



WE ARE PLEDGED TO THE LETTER AND SPIRIT OF THE U.S. POLICY FOR ACHIEVEMENT OF EQUAL HOUSING OPPORTUNITY THROUGHOUT THE NATION. WE ENCOURAGE AND SUPPORT AN AFFIRMATIVE ADVERTISING AND MARKETING PROGRAM IN WHICH THERE ARE NO BARRIERS TO OBTAINING HOUSING BECAUSE OF RACE, COLOR, RELIGION, SEX, HANDICAP, FAMILIAL STATUS OR NATIONAL ORIGIN. All depictions of appliances, fixtures, furnishings, counters, soffits, and other matters of detail, including, without limitation, items of finish and decoration, are conceptual only and are not necessarily included in each Unit. This is not an offer to sell, or solicitation of offers to buy, the condominium units in jurisdictions where such offer or solicitation cannot be made or are otherwise prohibited by law, and your eligibility for purchase will depend upon your state of residency. This offering is made only by the offering documents for the condominium and no statement should be relied upon if not made in the offering documents. The features, amenities, designs, design professionals, finishes and specifications are proposed only, and the Developer reserves the right to modify, substitute, revise or withdraw any or all of same in its sole discretion and without prior notice. The photographs contained in this brochure may be artists renderings or stock photography and are used to depict the spirit of the lifestyles to be achieved rather than any that may exist or that may be proposed and are merely intended as illustrations of the activities and concepts depicted therein. This Condominium is being developed by SFH Owner LLC ("Developer"). Any and all statements, disclosures and/or representations shall be deemed made by Developer and not Related Companies or any principal of the Related Companies and any purchaser agrees to look solely to Developer (and not to Related Companies and/or any of its affiliates or principals) with respect to any and all matters relating to the marketing and/or development of the Condominium and with respect to the sales of units in the Condominium.

ORAL REPRESENTATIONS CANNOT BE RELIED UPON AS CORRECTLY STATING THE REPRESENTATIONS OF THE DEVELOPER. FOR CORRECT REPRESENTATIONS, MAKE REFERENCE TO THIS BROCHURE AND TO THE DOCUMENTS REQUIRED BY SECTION 718.503, FLORIDA STATUTES, TO BE FURNISHED BY A DEVELOPER TO A BUYER OR LESSEE.

