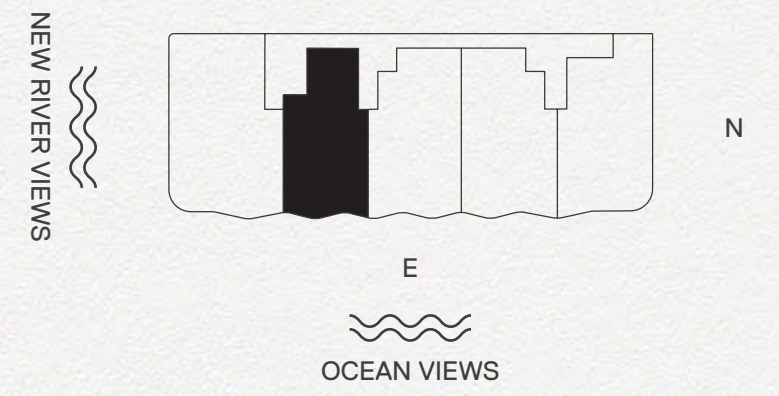


# RESIDENCE 02A

2 Bedrooms | 2.5 Bathrooms

Interior: 1,812 SF | Terrace: 247 SF



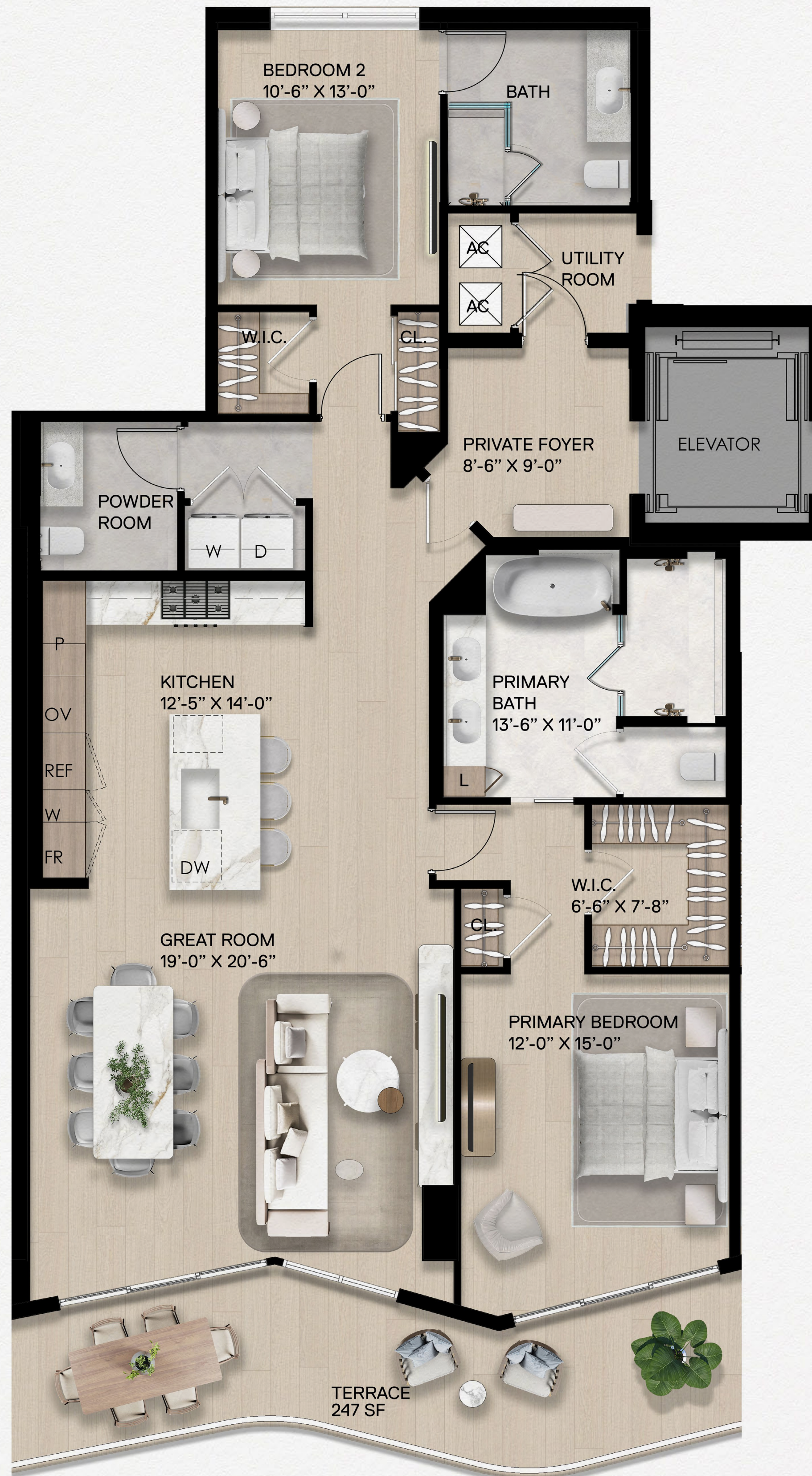
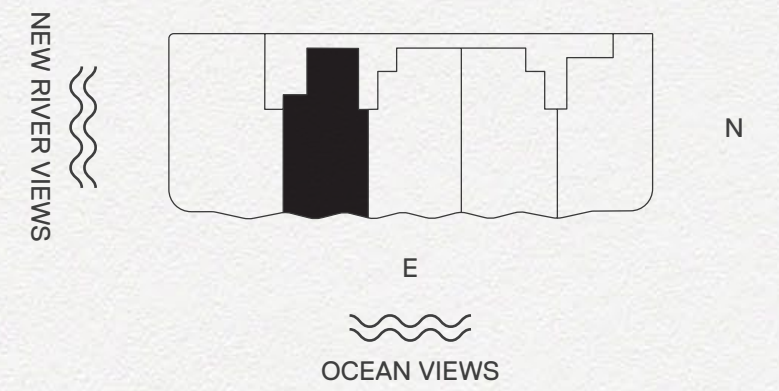
The dimensions stated for this unit floor plan are approximate because there are various recognized methods for calculating the square footage of a unit. The square footage stated here is calculated from the exterior boundaries of the exterior walls to the centerline of interior demising walls without deductions for cutouts, curves, or architectural features. This method typically results in quoted dimensions greater than the dimensions that would be determined by using other accepted methods. The definition of "Unit" and the calculation method to be relied upon is set forth by the Developer, RD 3B LLC, in Developer's prospectus; the method set forth in the Developer's prospectus may result in a square footage calculation less than the method used here. Consult the Developer's prospectus for information on what is offered with the Unit and the calculation of the Unit square footage and dimensions.



# RESIDENCE 02B

2 Bedrooms | 2.5 Bathrooms

Interior: 1,816 SF | Terrace: 247 SF



The dimensions stated for this unit floor plan are approximate because there are various recognized methods for calculating the square footage of a unit. The square footage stated here is calculated from the exterior boundaries of the exterior walls to the centerline of interior demising walls without deductions for cutouts, curves, or architectural features. This method typically results in quoted dimensions greater than the dimensions that would be determined by using other accepted methods. The definition of "Unit" and the calculation method to be relied upon is set forth by the Developer, RD 3B LLC, in Developer's prospectus; the method set forth in the Developer's prospectus may result in a square footage calculation less than the method used here. Consult the Developer's prospectus for information on what is offered with the Unit and the calculation of the Unit square footage and dimensions.

