



**ST REGIS**  
MIAMI  
THE RESIDENCES

PENTHOUSE

# LPH A

FLOORS 46 – 47, LOWER LEVEL

Future residences located at:  
1809 Brickell Avenue  
Miami, Florida 33129



ORAL REPRESENTATIONS CANNOT BE RELIED UPON AS CORRECTLY STATING REPRESENTATIONS OF THE DEVELOPER. FOR CORRECT REPRESENTATIONS, MAKE REFERENCE TO THIS BROCHURE AND TO THE DOCUMENTS REQUIRED BY SECTION 718.503, FLORIDA STATUTES, TO BE FURNISHED BY A DEVELOPER TO A BUYER OR LESSEE.

The St. Regis Residences, Miami are developed by 1809 Brickell Property Owner, LLC ("Developer"). The St. Regis Residences, Miami are not owned, developed, or sold by Marriott International, Inc. or its affiliates ("Marriott"). The Developer uses the St. Regis marks under a license from Marriott, which has not confirmed the accuracy of any of the statements or representations made about the project by Developer. Sketches, renderings, or photographs depicting a floor plan are proposed only and the Developer reserves the right to modify, revise, or withdraw any or all of the same in Developer's sole discretion without prior notice. Locations and layouts of windows, doors, closets, plumbing fixtures, and structural and architectural design elements may vary from concept to actual construction. All depictions of appliances, plumbing fixtures, counters, countertops, cabinets, soffits, floor coverings, and other matters of design and décor detail or floor plans are conceptual and such drawings shown should not be relied upon as representations, express or implied, of the final detail of The St. Regis Residences, Miami or any Unit. There is no guarantee that any proposed hotel brands will be involved as depicted or at all upon, or following, the completion of The St. Regis Residences, Miami. Consult the prospectus of the Developer to understand this offering, the amenities, the proposed budgets, terms, conditions, specifications, fees, Unit dimensions, site plans, and to learn what is included with purchase and by payment of regular assessments. All prices are subject to change at any time and without notice and do not include optional features, design packages, furniture packages, or premiums for upgrades to any Unit. © 1809 Brickell Property Owner, LLC 2024.

6 BEDROOMS | 7 BATHROOMS | 2 POWDER ROOMS

INTERIOR: 4,772 SF | 443 SQM EXTERIOR: 1,529 SF | 142 SQM

TOTAL INTERIOR: 8,687 SF | 807 SQM TOTAL EXTERIOR: 1,651 SF | 153 SQM



PENTHOUSE  
**LPH A**  
FLOORS 46-47, LOWER LEVEL

LOWER LEVEL INTERIOR

4,772 SF | 443 SQM

LOWER LEVEL EXTERIOR

1,529 SF | 142 SQM

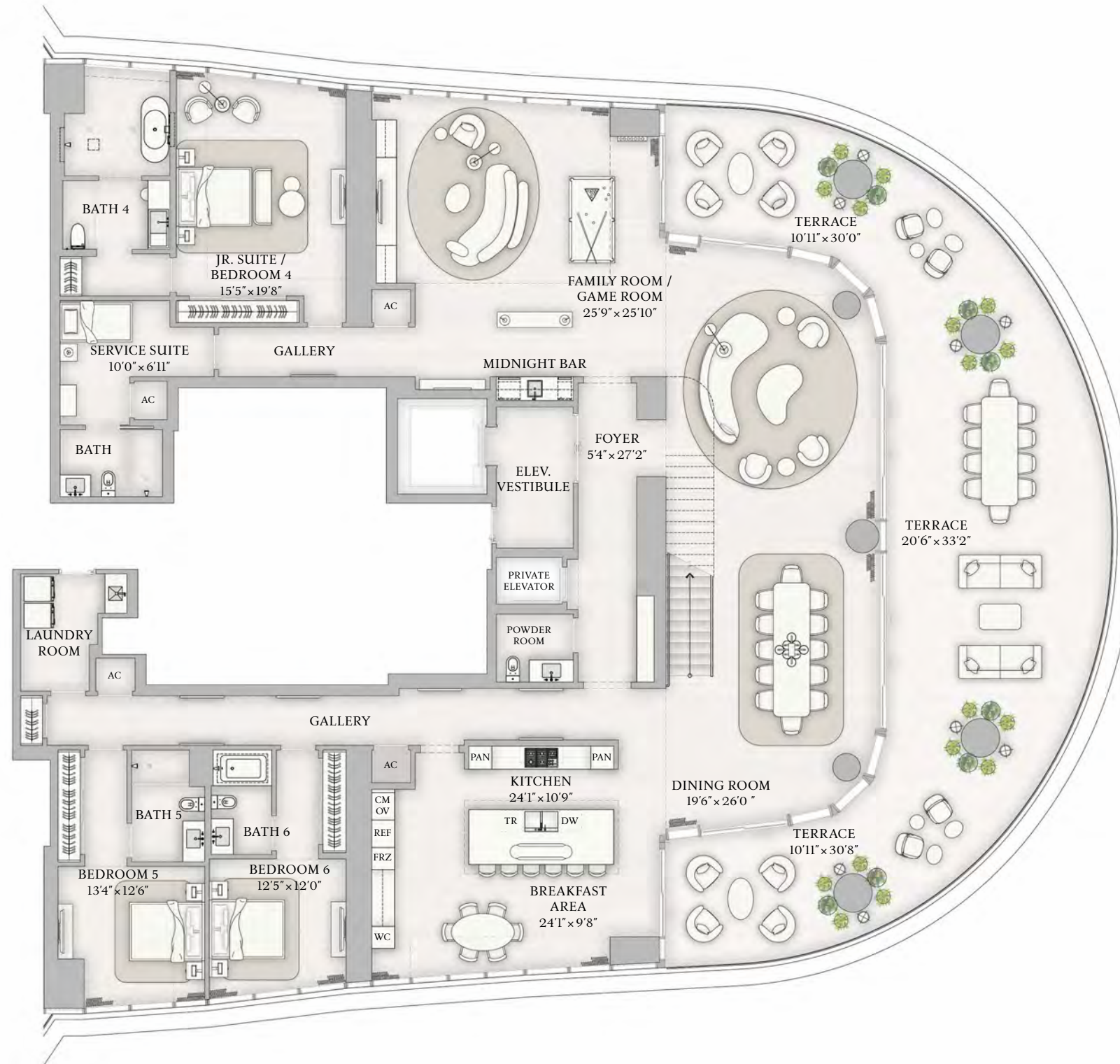
TOTAL INTERIOR

8,687 SF | 807 SQM

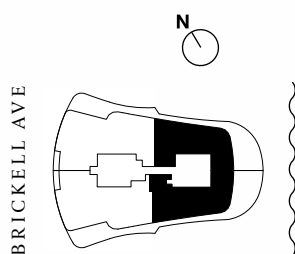
TOTAL EXTERIOR

1,651 SF | 153 SQM

- 6 BEDROOMS
- 7 BATHROOMS
- 2 POWDER ROOMS
- DOUBLE HEIGHT GREAT ROOM
- EXPANSIVE DOUBLE HEIGHT TERRACE
- PRIMARY SUITE WITH OFFICE
- GAME ROOM
- FAMILY ROOM
- INTERNAL ELEVATOR
- SERVICE SUITE



BISCAYNE BAY



BRICKELL AVE

The dimensions stated for this Unit floor plan are approximate because there are various recognized methods for calculating the square footage of a Unit. The square footage stated here is calculated from the exterior boundaries of the exterior walls to the centerline of interior demising walls without deductions for cutouts, curves, or architectural features. This method typically results in quoted dimensions greater than the dimensions that would be determined by using other accepted methods. The definition of "Unit" and the calculation method to be relied upon is set forth in Developer's prospectus and the method set forth in the Developer's prospectus may result in a square footage calculation less than the method used here. Dimensions and Unit configuration may change during construction. The furniture illustrated is not included with purchase; the floorplan layout is not a guarantee on your use of space but is one example of uses of space. Consult the Developer's prospectus to understand the calculation of the Unit square footage and dimensions and what is included with purchase. Prices are not based on the square footage no matter the method of calculation of Unit dimensions and all prices are subject to change at any time.



PENTHOUSE  
**LPH A**  
FLOORS 46-47, UPPER LEVEL

UPPER LEVEL INTERIOR

3,915 SF | 364 SQM

UPPER LEVEL EXTERIOR

122 SF | 11 SQM

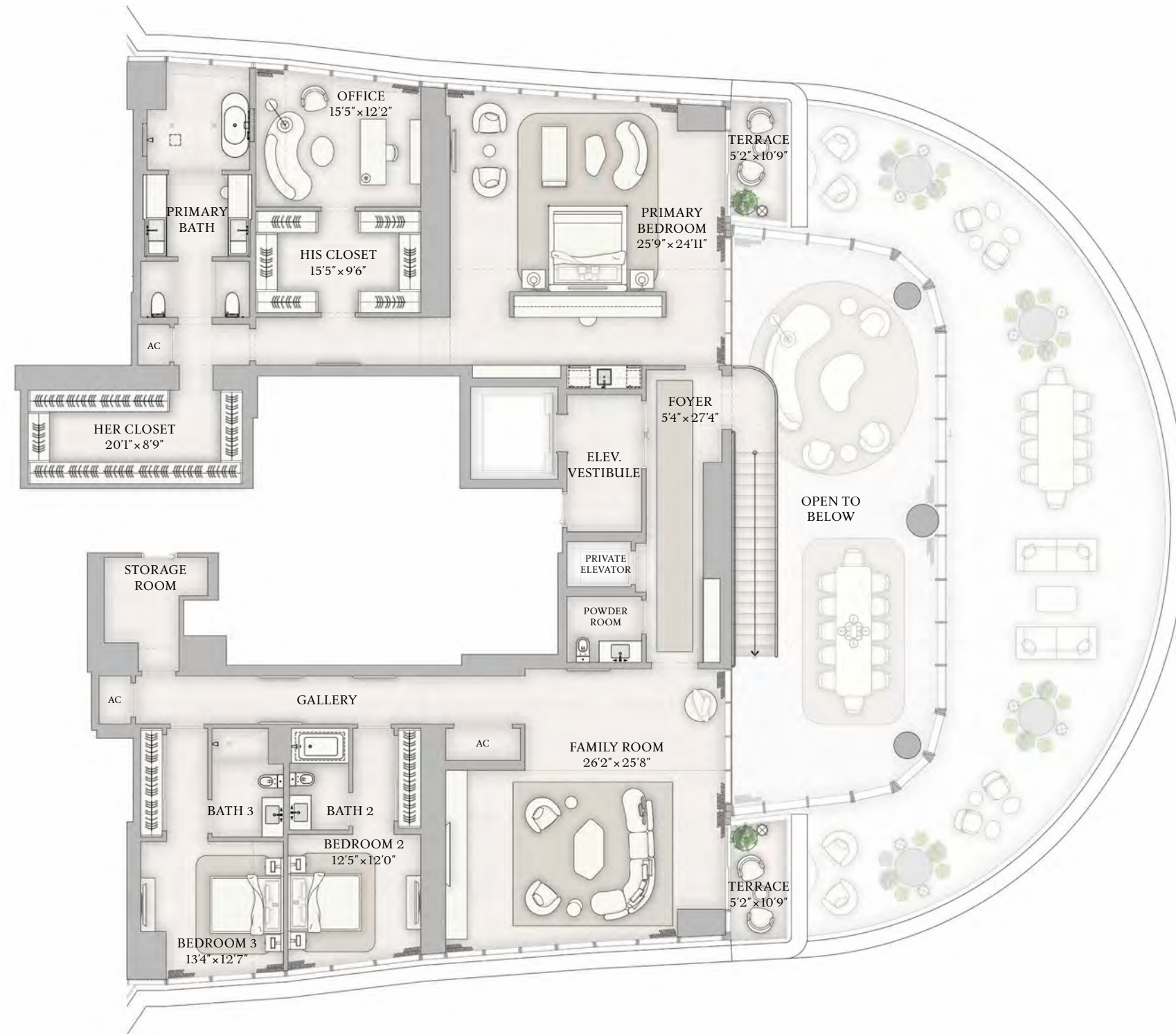
TOTAL INTERIOR

8,687 SF | 807 SQM

TOTAL EXTERIOR

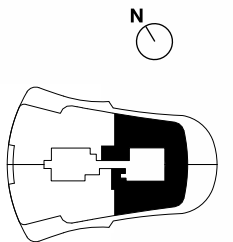
1,651 SF | 153 SQM

- 6 BEDROOMS
- 7 BATHROOMS
- 2 POWDER ROOMS
- DOUBLE HEIGHT GREAT ROOM
- EXPANSIVE DOUBLE HEIGHT TERRACE
- PRIMARY SUITE WITH OFFICE
- GAME ROOM
- FAMILY ROOM
- INTERNAL ELEVATOR
- SERVICE SUITE



BISCAYNE BAY

BRICKELL AVE



The dimensions stated for this Unit floor plan are approximate because there are various recognized methods for calculating the square footage of a Unit. The square footage stated here is calculated from the exterior boundaries of the exterior walls to the centerline of interior demising walls without deductions for cutouts, curves, or architectural features. This method typically results in quoted dimensions greater than the dimensions that would be determined by using other accepted methods. The definition of "Unit" and the calculation method to be relied upon is set forth in Developer's prospectus and the method set forth in the Developer's prospectus may result in a square footage calculation less than the method used here. Dimensions and Unit configuration may change during construction. The furniture illustrated is not included with purchase; the floorplan layout is not a guarantee on your use of space but is one example of uses of space. Consult the Developer's prospectus to understand the calculation of the Unit square footage and dimensions and what is included with purchase. Prices are not based on the square footage no matter the method of calculation of Unit dimensions and all prices are subject to change at any time.



**ST REGIS**  
MIAMI  
THE RESIDENCES

PENTHOUSE

# MPH C

FLOOR 47

Future residences located at:  
1809 Brickell Avenue  
Miami, Florida 33129  
MiamiSRR.com  
786 713 3556



ORAL REPRESENTATIONS CANNOT BE RELIED UPON AS CORRECTLY STATING REPRESENTATIONS OF THE DEVELOPER. FOR CORRECT REPRESENTATIONS, MAKE REFERENCE TO THIS BROCHURE AND TO THE DOCUMENTS REQUIRED BY SECTION 718.503, FLORIDA STATUTES, TO BE FURNISHED BY A DEVELOPER TO A BUYER OR LESSEE.

The St. Regis Residences, Miami are developed by 1809 Brickell Property Owner, LLC ("Developer"). The St. Regis Residences, Miami are not owned, developed, or sold by Marriott International, Inc. or its affiliates ("Marriott"). The Developer uses the St. Regis marks under a license from Marriott, which has not confirmed the accuracy of any of the statements or representations made about the project by Developer. Sketches, renderings, or photographs depicting a floor plan are proposed only and the Developer reserves the right to modify, revise, or withdraw any or all of the same in Developer's sole discretion without prior notice. Locations and layouts of windows, doors, closets, plumbing fixtures, and structural and architectural design elements may vary from concept to actual construction. All depictions of appliances, plumbing fixtures, counters, countertops, cabinets, soffits, floor coverings, and other matters of design and décor detail or floor plans are conceptual and such drawings shown should not be relied upon as representations, express or implied, of the final detail of The St. Regis Residences, Miami or any Unit. There is no guarantee that any proposed hotel brands will be involved as depicted or at all upon, or following, the completion of The St. Regis Residences, Miami. Consult the prospectus of the Developer to understand this offering, the amenities, the proposed budgets, terms, conditions, specifications, fees, Unit dimensions, site plans, and to learn what is included with purchase and by payment of regular assessments. All prices are subject to change at any time and without notice and do not include optional features, design packages, furniture packages, or premiums for upgrades to any Unit. © 1809 Brickell Property Owner, LLC 2024.

6 BEDROOMS | 6 BATHROOMS | POWDER ROOM  
INTERIOR: 6,835 SF | 635 SQM EXTERIOR: 1,335 SF | 124 SQM SQM

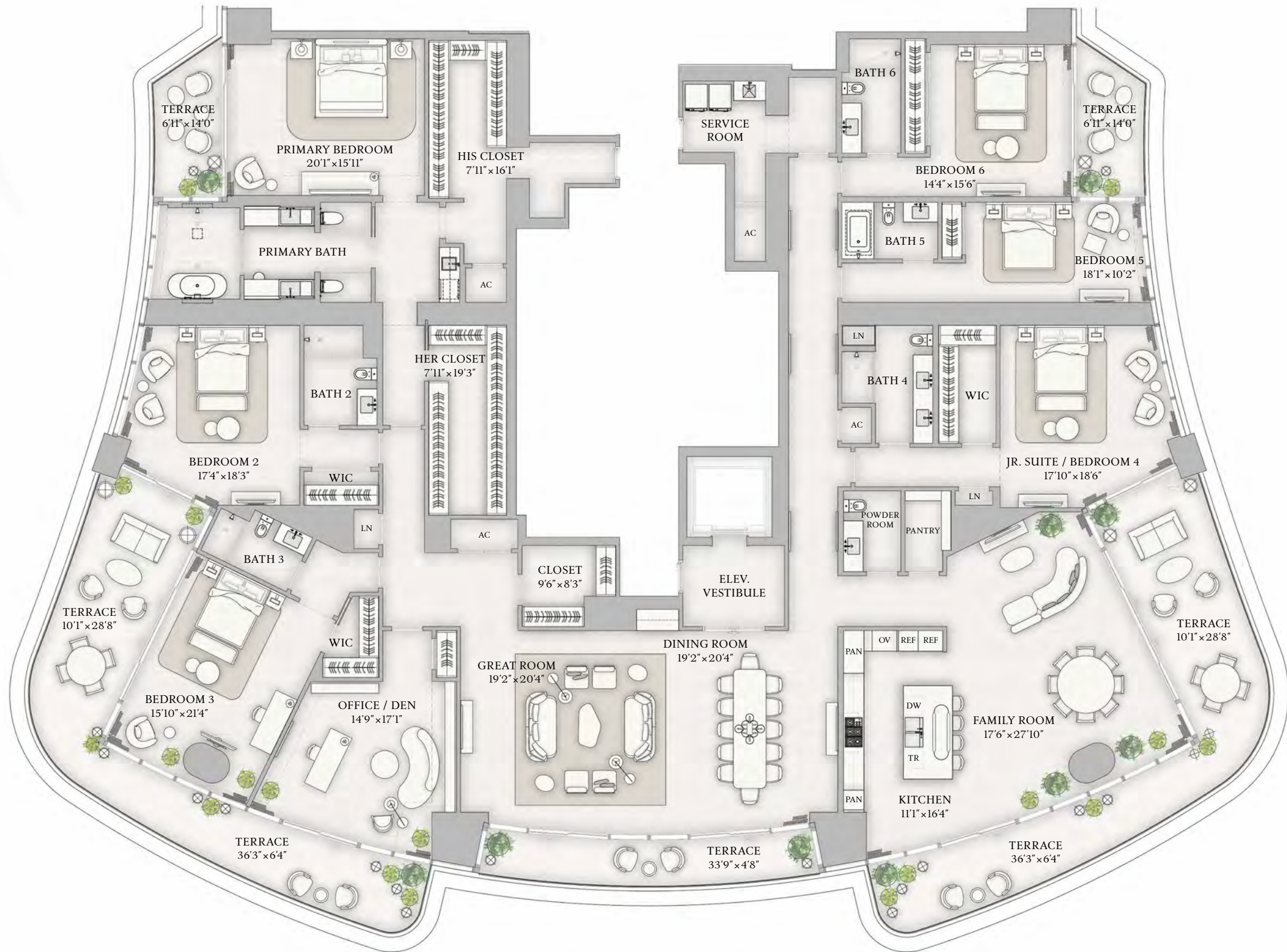


PENTHOUSE  
**MPH C**  
FLOOR 47

INTERIOR  
6,835 SF | 635 SQM

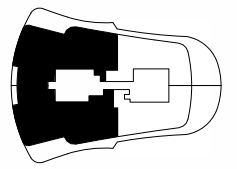
EXTERIOR  
1,335 SF | 124 SQM

- 6 BEDROOMS
- 6 BATHROOMS
- POWDER ROOM
- OFFICE
- EAT-IN KITCHEN AND FAMILY ROOM



BISCAYNE BAY

BRICKELL AVE



The dimensions stated for this Unit floor plan are approximate because there are various recognized methods for calculating the square footage of a Unit. The square footage stated here is calculated from the exterior boundaries of the exterior walls to the centerline of interior demising walls without deductions for cutouts, curves, or architectural features. This method typically results in quoted dimensions greater than the dimensions that would be determined by using other accepted methods. The definition of "Unit" and the calculation method to be relied upon is set forth in Developer's prospectus and the method set forth in the Developer's prospectus may result in a square footage calculation less than the method used here. Dimensions and Unit configuration may change during construction. The furniture illustrated is not included with purchase; the floorplan layout is not a guarantee on your use of space but is one example of uses of space. Consult the Developer's prospectus to understand the calculation of the Unit square footage and dimensions and what is included with purchase. Prices are not based on the square footage no matter the method of calculation of Unit dimensions and all prices are subject to change at any time.





UPPER PENTHOUSE A

# The Charles

FLOOR 49, MAIN LEVEL

MAIN LEVEL INTERIOR

9,479 SF | 881 SQM

MAIN LEVEL EXTERIOR

2,622 SF | 244 SQM

TOTAL INTERIOR

10,012 SF | 926 SQM

TOTAL EXTERIOR

4,931 SF | 458 SQM

5 BEDROOMS

7 BATHROOMS

1 POWDER ROOM

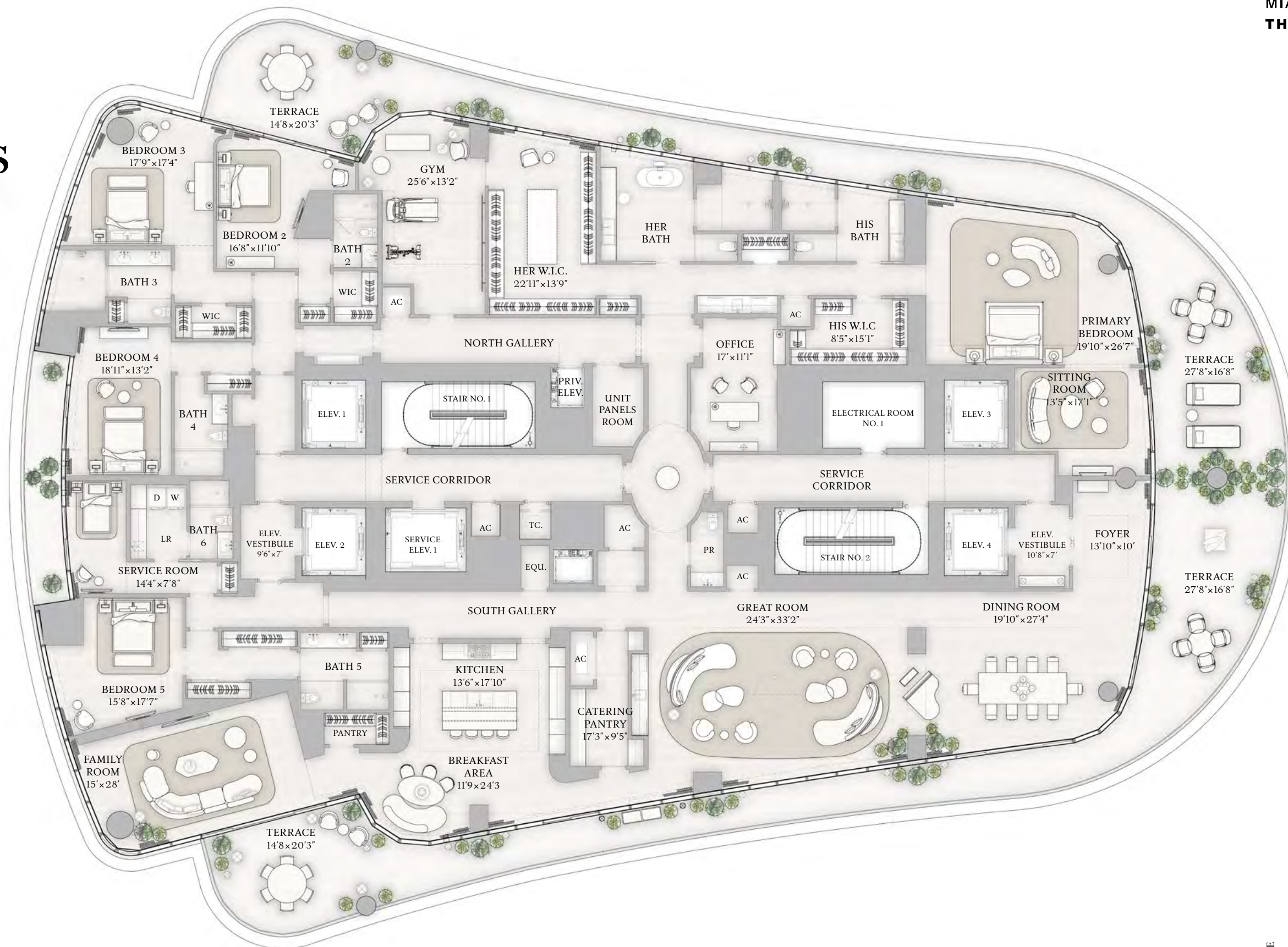
PRIVATE SUNDECK

PRIVATE POOL & SPA

SUMMER KITCHEN

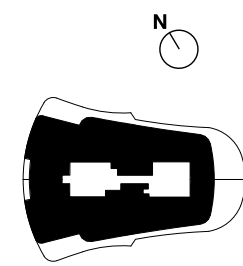
WINDOWED SERVICE SUITE

PRIVATE ELEVATOR



BISCAYNE BAY

BRICKELL AVE



The dimensions stated for this Unit floor plan are approximate because there are various recognized methods for calculating the square footage of a Unit. The square footage stated here is calculated from the exterior boundaries of the exterior walls to the centerline of interior demising walls without deductions for cutouts, curves, or architectural features. This method typically results in quoted dimensions greater than the dimensions that would be determined by using other accepted methods. The definition of "Unit" and the calculation method to be relied upon is set forth in Developer's prospectus and the method set forth in the Developer's prospectus may result in a square footage calculation less than the method used here. Dimensions and Unit configuration may change during construction. The furniture illustrated is not included with purchase; the floorplan layout is not a guarantee on your use of space but is one example of uses of space. Consult the Developer's prospectus to understand the calculation of the Unit square footage and dimensions and what is included with purchase. Prices are not based on the square footage no matter the method of calculation of Unit dimensions and all prices are subject to change at any time.



UPPER PENTHOUSE A

# The Charles

ROOF TERRACE

ROOF TERRACE INTERIOR  
533 SF | 50 SQM

ROOF TERRACE EXTERIOR  
2,309 SF | 215 SQM

TOTAL INTERIOR  
10,012 SF | 926 SQM

TOTAL EXTERIOR  
4,931 SF | 458 SQM

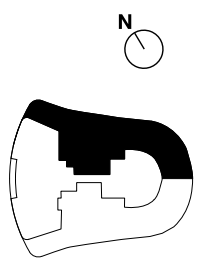
- 5 BEDROOMS
- 7 BATHROOMS
- 1 POWDER ROOM
- PRIVATE SUNDECK
- WINDOWED SERVICE SUITE
- PRIVATE ELEVATOR



BISCAYNE BAY

The dimensions stated for this Unit floor plan are approximate because there are various recognized methods for calculating the square footage of a Unit. The square footage stated here is calculated from the exterior boundaries of the exterior walls to the centerline of interior demising walls without deductions for cutouts, curves, or architectural features. This method typically results in quoted dimensions greater than the dimensions that would be determined by using other accepted methods. The definition of "Unit" and the calculation method to be relied upon is set forth in Developer's prospectus and the method set forth in the Developer's prospectus may result in a square footage calculation less than the method used here. Dimensions and Unit configuration may change during construction. The furniture illustrated is not included with purchase; the floorplan layout is not a guarantee on your use of space but is one example of uses of space. Consult the Developer's prospectus to understand the calculation of the Unit square footage and dimensions and what is included with purchase. Prices are not based on the square footage no matter the method of calculation of Unit dimensions and all prices are subject to change at any time.

BRICKELL AVE







UPPER PENTHOUSE B

# The Julia

FLOOR 48, MAIN LEVEL

MAIN LEVEL INTERIOR

9,479 SF | 881 SQM

MAIN LEVEL EXTERIOR

3,690 SF | 343 SQM

TOTAL INTERIOR

9,959 SF | 925 SQM

TOTAL EXTERIOR

6,080 SF | 565 SQM

5 BEDROOMS

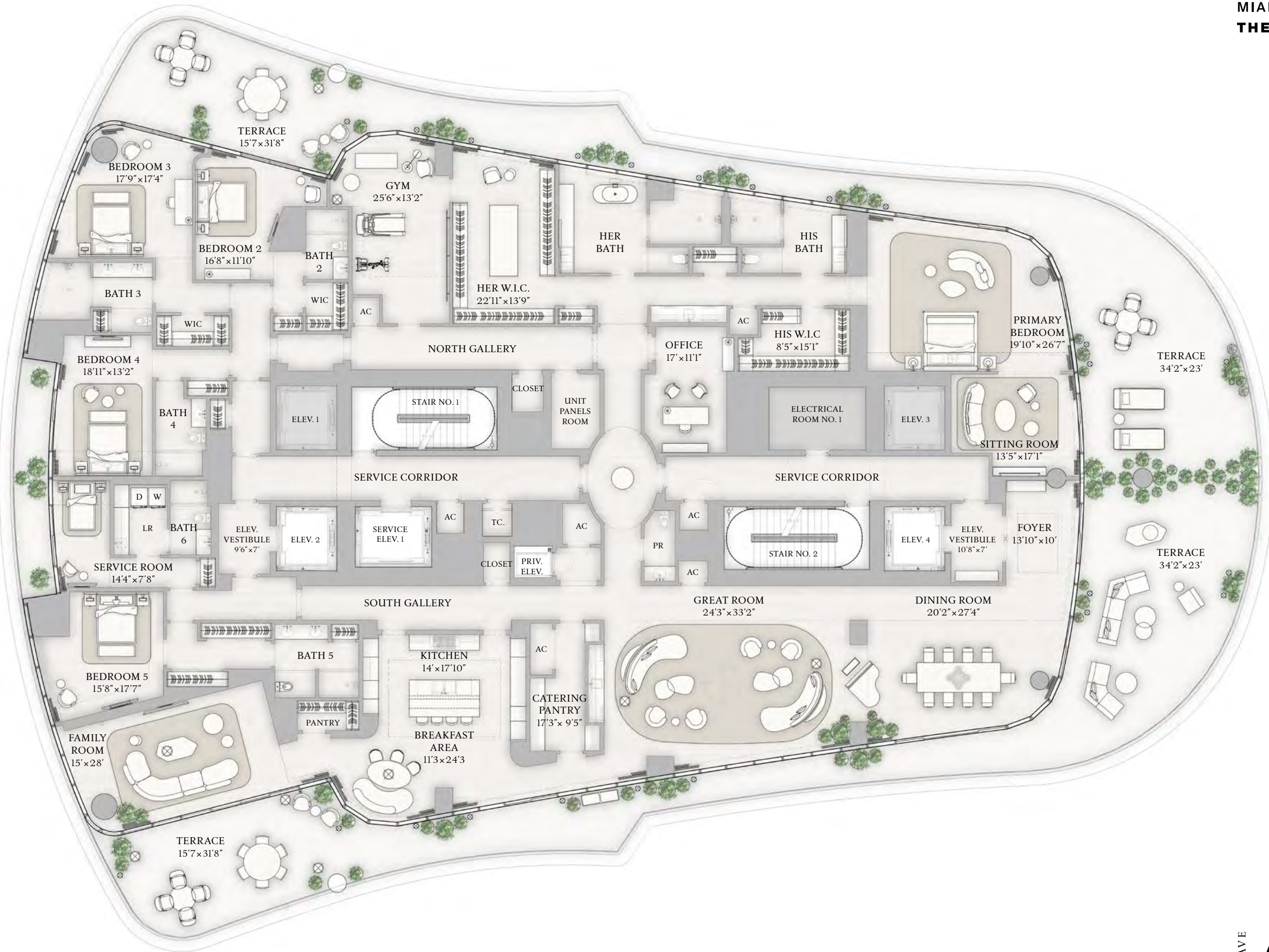
7 BATHROOMS

1 POWDER ROOM

PRIVATE SUNDECK

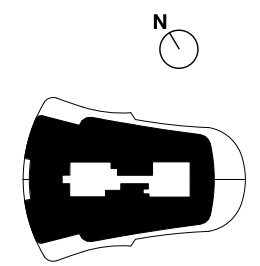
WINDOWED SERVICE SUITE

PRIVATE ELEVATOR



BISCAYNE BAY

BRICKELL AVE



The dimensions stated for this Unit floor plan are approximate because there are various recognized methods for calculating the square footage of a Unit. The square footage stated here is calculated from the exterior boundaries of the exterior walls to the centerline of interior demising walls without deductions for cutouts, curves, or architectural features. This method typically results in quoted dimensions greater than the dimensions that would be determined by using other accepted methods. The definition of "Unit" and the calculation method to be relied upon is set forth in Developer's prospectus and the method set forth in the Developer's prospectus may result in a square footage calculation less than the method used here. Dimensions and Unit configuration may change during construction. The furniture illustrated is not included with purchase; the floorplan layout is not a guarantee on your use of space but is one example of uses of space. Consult the Developer's prospectus to understand the calculation of the Unit square footage and dimensions and what is included with purchase. Prices are not based on the square footage no matter the method of calculation of Unit dimensions and all prices are subject to change at any time.



UPPER PENTHOUSE B

# The Julia

ROOF TERRACE

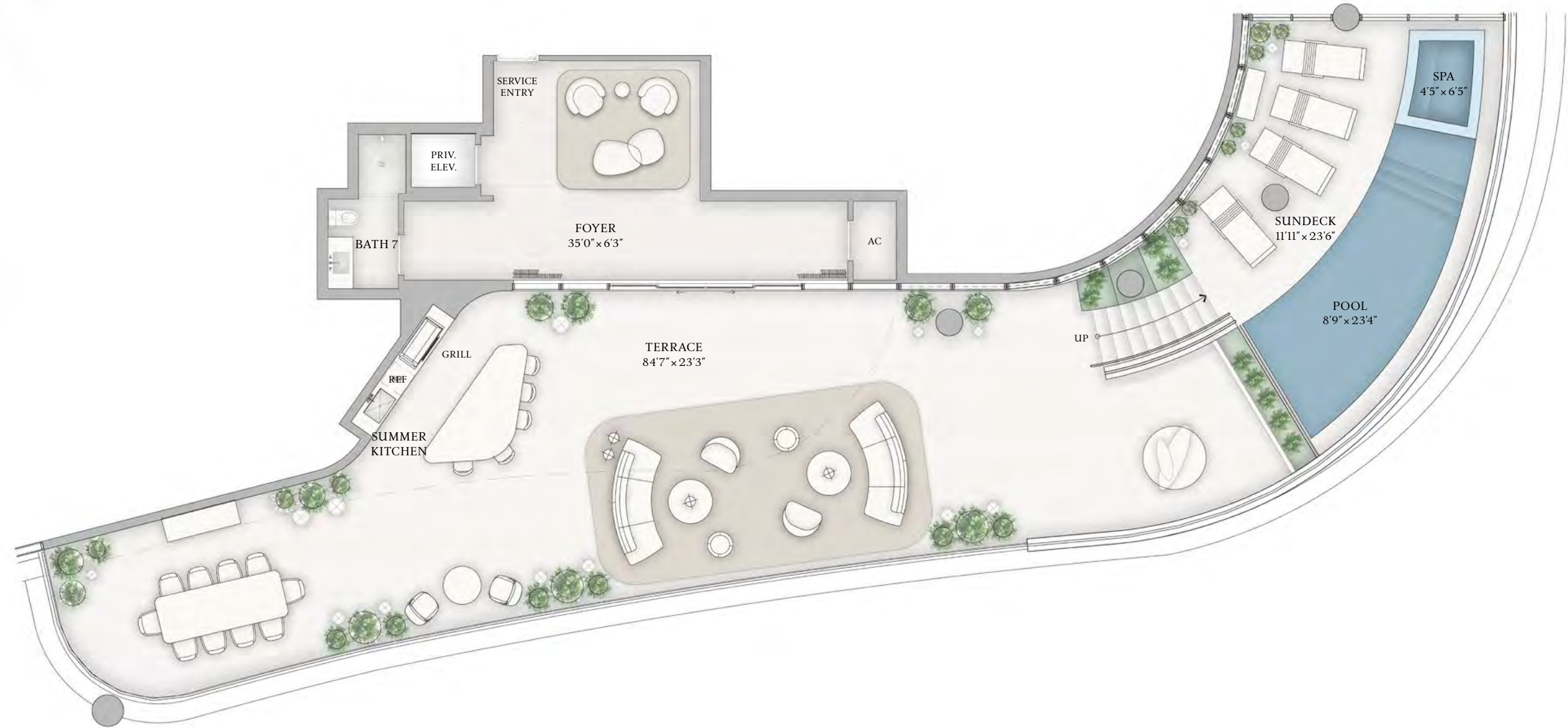
ROOF TERRACE INTERIOR  
480 SF | 45 SQM

ROOF TERRACE EXTERIOR  
2,390 SF | 223 SQM

TOTAL INTERIOR  
9,959 SF | 925 SQM

TOTAL EXTERIOR  
6,080 SF | 565 SQM

- 5 BEDROOMS
- 7 BATHROOMS
- 1 POWDER ROOM
- PRIVATE SUNDECK
- PRIVATE POOL & SPA
- SUMMER KITCHEN
- WINDOWED SERVICE SUITE
- PRIVATE ELEVATOR



The dimensions stated for this Unit floor plan are approximate because there are various recognized methods for calculating the square footage of a Unit. The square footage stated here is calculated from the exterior boundaries of the exterior walls to the centerline of interior demising walls without deductions for cutouts, curves, or architectural features. This method typically results in quoted dimensions greater than the dimensions that would be determined by using other accepted methods. The definition of "Unit" and the calculation method to be relied upon is set forth in Developer's prospectus and the method set forth in the Developer's prospectus may result in a square footage calculation less than the method used here. Dimensions and Unit configuration may change during construction. The furniture illustrated is not included with purchase; the floorplan layout is not a guarantee on your use of space but is one example of uses of space. Consult the Developer's prospectus to understand the calculation of the Unit square footage and dimensions and what is included with purchase. Prices are not based on the square footage no matter the method of calculation of Unit dimensions and all prices are subject to change at any time.