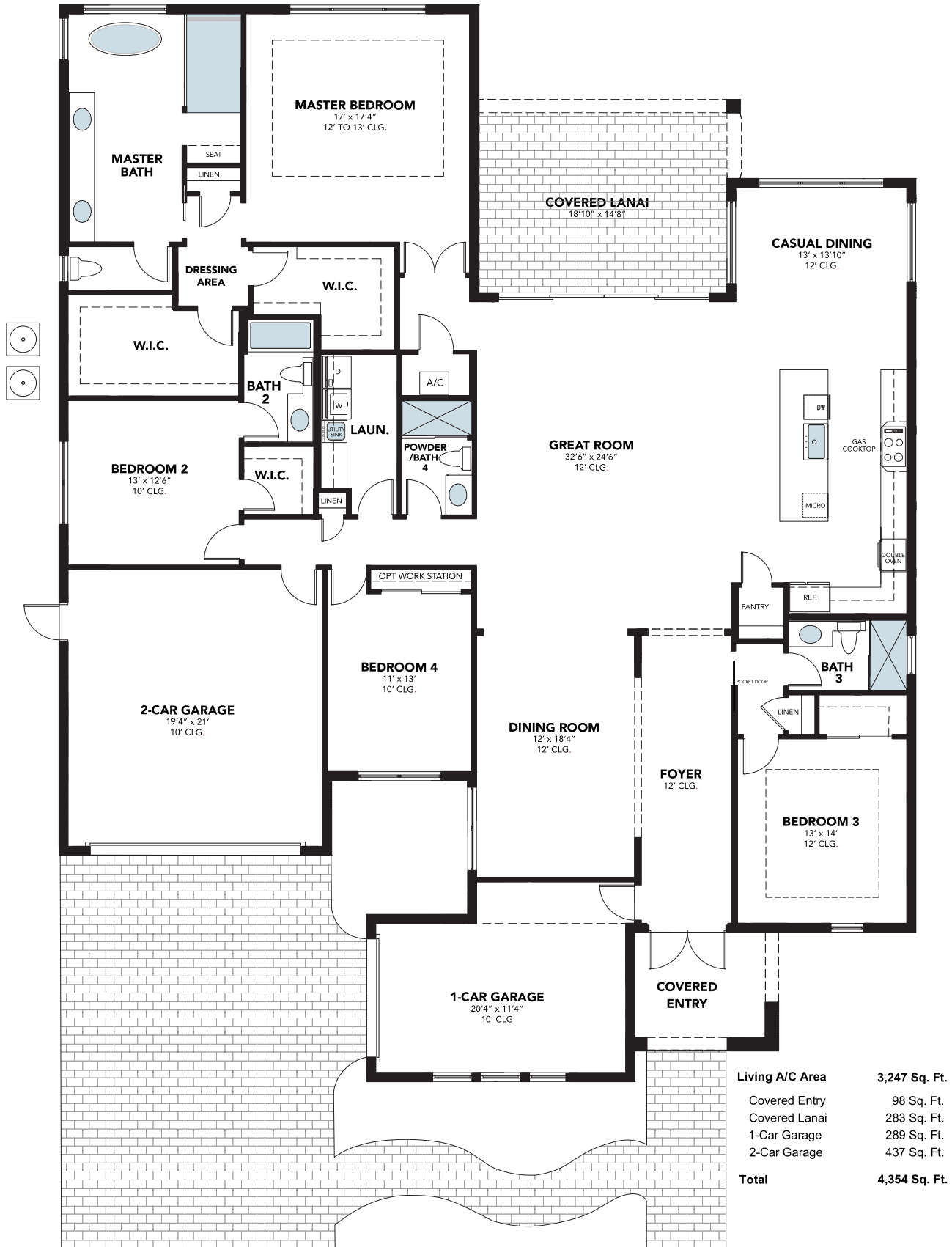


# The Antigua

4 BEDROOMS, 4 BATHS, 3-CAR GARAGE



Living A/C Area	3,247 Sq. Ft.
Covered Entry	98 Sq. Ft.
Covered Lanai	283 Sq. Ft.
1-Car Garage	289 Sq. Ft.
2-Car Garage	437 Sq. Ft.
<b>Total</b>	<b>4,354 Sq. Ft.</b>

## CORAL ISLES

THE ESTATE HOME COLLECTION AT AVENIR



# CORAL ISLES

AVENIR • PALM BEACH GARDENS



A Private Gated Enclave



CONTEMPORARY Florida



MODERN



COASTAL Modern