

**MODEL A2 - TYPE A**  
 (1BED/DEN/1BTH)  
 LEVELS 2-14 & 16-24

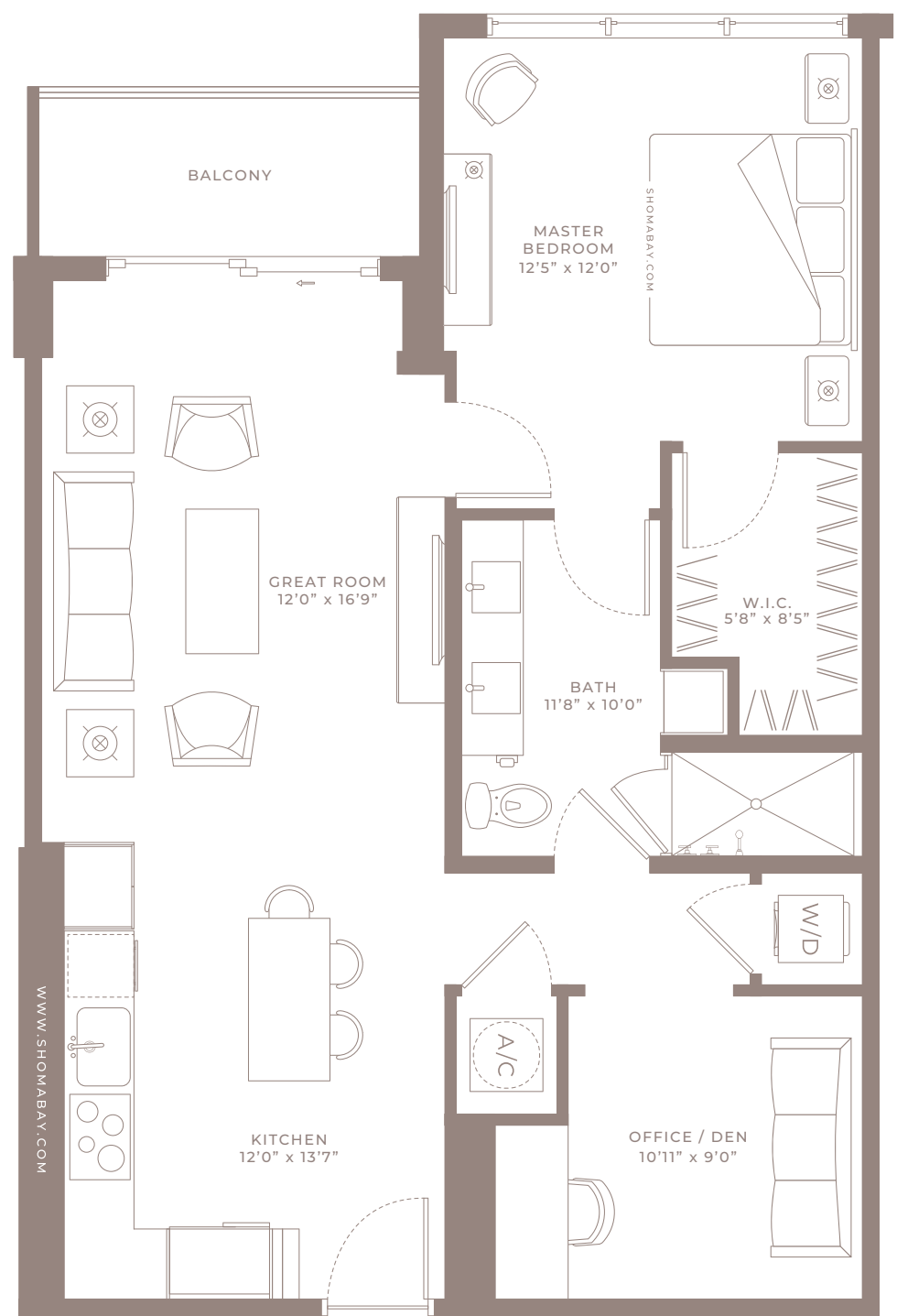
Internal Area	881 SQ.FT (81.8 m2)
External Area	57 SQ.FT (5.3 m2)
<b>Total Area</b>	<b>938 SQ.FT (87 m2)</b>



Any renderings and depictions are conceptual only and are for the convenience of reference. They should not be relied upon as representations, express or implied, of the final detail of the Units nor the views from any of the Units. ORAL REPRESENTATIONS CANNOT BE RELIED UPON AS CORRECTLY STATING REPRESENTATIONS OF THE DEVELOPER. FOR CORRECT REPRESENTATIONS, MAKE REFERENCE TO THIS BROCHURE AND TO THE DOCUMENTS REQUIRED BY 718.503, FLORIDA STATUTES, TO BE FURNISHED BY A DEVELOPER TO A BUYER OR LESSEE.



**SHOMA**



**MODEL A2.1 - TYPE A**  
 (1BED/DEN/1BTH)  
 LEVELS 2-14 & 16-24

Internal Area	881 SQ.FT (81.8 m <sup>2</sup> )
External Area	57 SQ.FT (5.3 m <sup>2</sup> )
<b>Total Area</b>	<b>938 SQ.FT (87 m<sup>2</sup>)</b>



Any renderings and depictions are conceptual only and are for the convenience of reference. They should not be relied upon as representations, express or implied, of the final detail of the Units nor the views from any of the Units. ORAL REPRESENTATIONS CANNOT BE RELIED UPON AS CORRECTLY STATING REPRESENTATIONS OF THE DEVELOPER. FOR CORRECT REPRESENTATIONS, MAKE REFERENCE TO THIS BROCHURE AND TO THE DOCUMENTS REQUIRED BY 718.503, FLORIDA STATUTES, TO BE FURNISHED BY A DEVELOPER TO A BUYER OR LESSEE.

