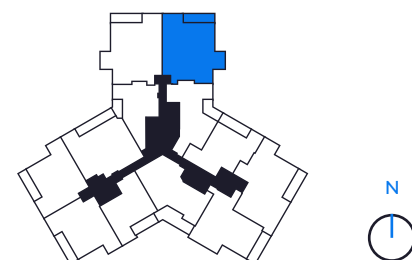


MONACO



3 BED / 3 BATH

AIR CONDITIONED: 1,964 SQ. FT.
 TERRACE: 169 SQ. FT.
TOTAL LIVING SPACE: 2,133 SQ. FT.
198 SQ. MT.

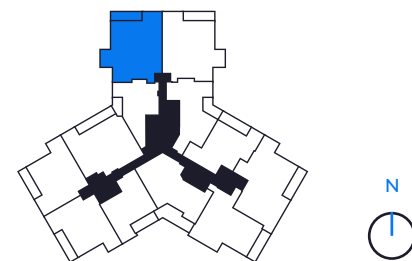


There are various methods for calculating the total square footage of a condominium unit, and depending on the method of calculation, the quoted square footage of a condominium unit may vary by more than a nominal amount. The dimensions as shown are measured to the exterior boundaries of the exterior walls and the centerline of interior demising walls and, in fact, are larger than the dimensions of the "Unit" as defined in the Declaration of Condominium for each tower of Marina Pointe which is measured using interior measurements.



3 BED / 3 BATH

AIR CONDITIONED: 1,964 SQ. FT.
 TERRACE: 169 SQ. FT.
TOTAL LIVING SPACE: 2,133 SQ. FT.
198 SQ. MT.



There are various methods for calculating the total square footage of a condominium unit, and depending on the method of calculation, the quoted square footage of a condominium unit may vary by more than a nominal amount. The dimensions as shown are measured to the exterior boundaries of the exterior walls and the centerline of interior demising walls and, in fact, are larger than the dimensions of the "Unit" as defined in the Declaration of Condominium for each tower of Marina Pointe which is measured using interior measurements.

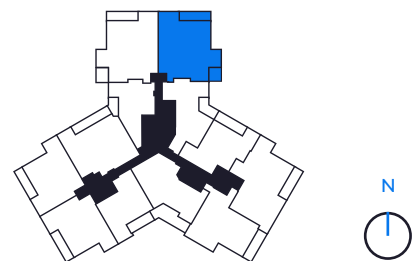
MONACO GRANDE

FLOOR 5



3 BED / 3 BATH

AIR CONDITIONED: 2,014 SQ. FT.
 TERRACE: 265 SQ. FT.
TOTAL LIVING SPACE: 2,279 SQ. FT.
 211 SQ. MT.



There are various methods for calculating the total square footage of a condominium unit, and depending on the method of calculation, the quoted square footage of a condominium unit may vary by more than a nominal amount. The dimensions as shown are measured to the exterior boundaries of the exterior walls and the centerline of interior demising walls and, in fact, are larger than the dimensions of the "Unit" as defined in the Declaration of Condominium for each tower of Marina Pointe which is measured using interior measurements.

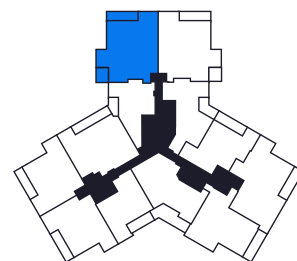
NICE GRANDE

FLOOR 5



3 BED / 3 BATH

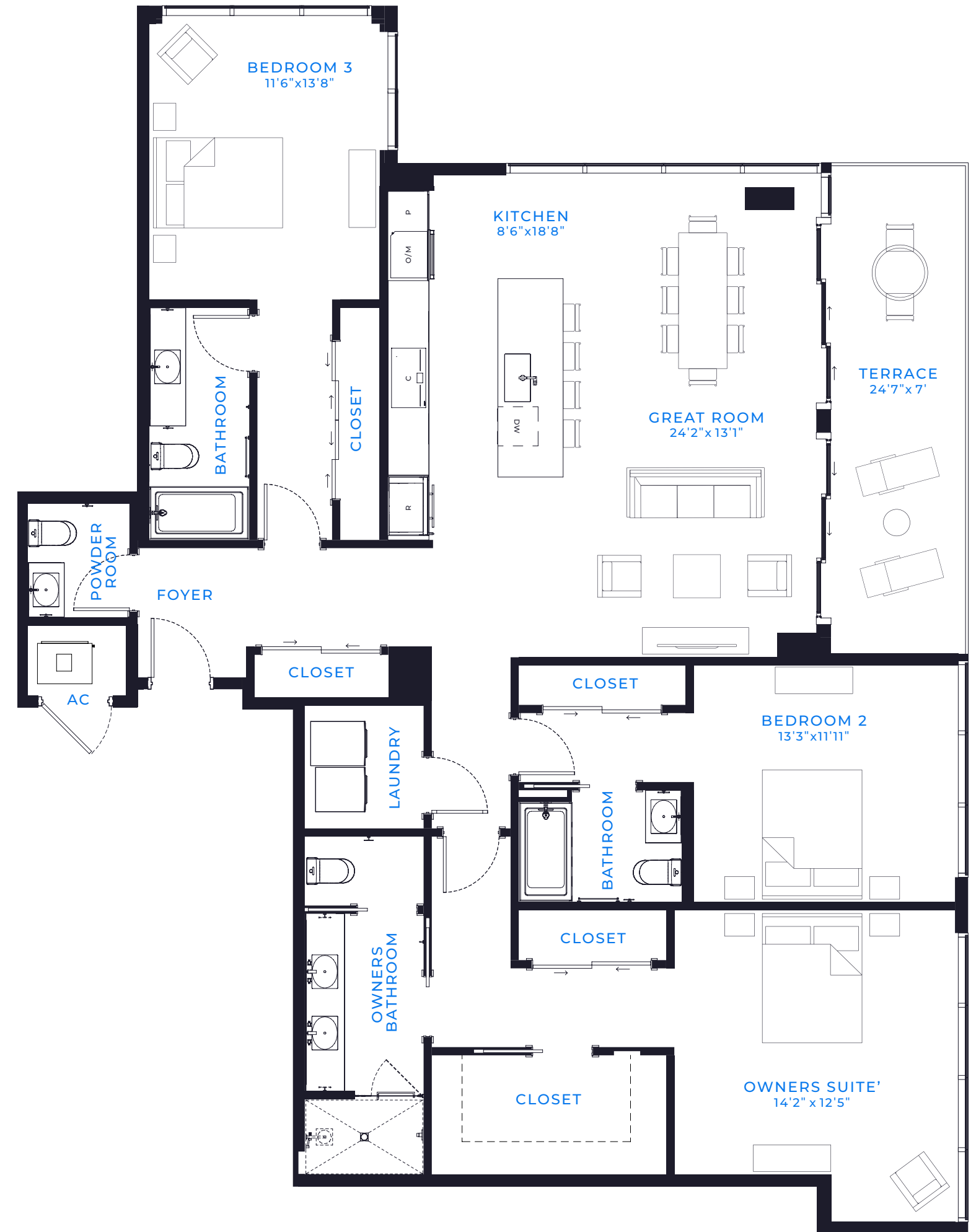
AIR CONDITIONED: 2,014 SQ. FT.
 TERRACE: 265 SQ. FT.
 TOTAL LIVING SPACE: 2,279 SQ. FT.
 211 SQ. MT.



There are various methods for calculating the total square footage of a condominium unit, and depending on the method of calculation, the quoted square footage of a condominium unit may vary by more than a nominal amount. The dimensions as shown are measured to the exterior boundaries of the exterior walls and the centerline of interior demising walls and, in fact, are larger than the dimensions of the "Unit" as defined in the Declaration of Condominium for each tower of Marina Pointe which is measured using interior measurements.

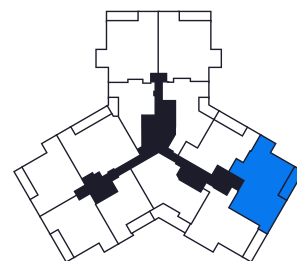
MONTPELIER

FLOORS 6 - 16



3 BED / 3.5 BATH

AIR CONDITIONED: 2,006 SQ. FT.
 TERRACE: 171 SQ. FT.
TOTAL LIVING SPACE: 2,177 SQ. FT.
202 SQ. MT.



There are various methods for calculating the total square footage of a condominium unit, and depending on the method of calculation, the quoted square footage of a condominium unit may vary by more than a nominal amount. The dimensions as shown are measured to the exterior boundaries of the exterior walls and the centerline of interior demising walls and, in fact, are larger than the dimensions of the "Unit" as defined in the Declaration of Condominium for each tower of Marina Pointe which is measured using interior measurements.