



BRICKELL

COLLECTION

4

RESIDENCE

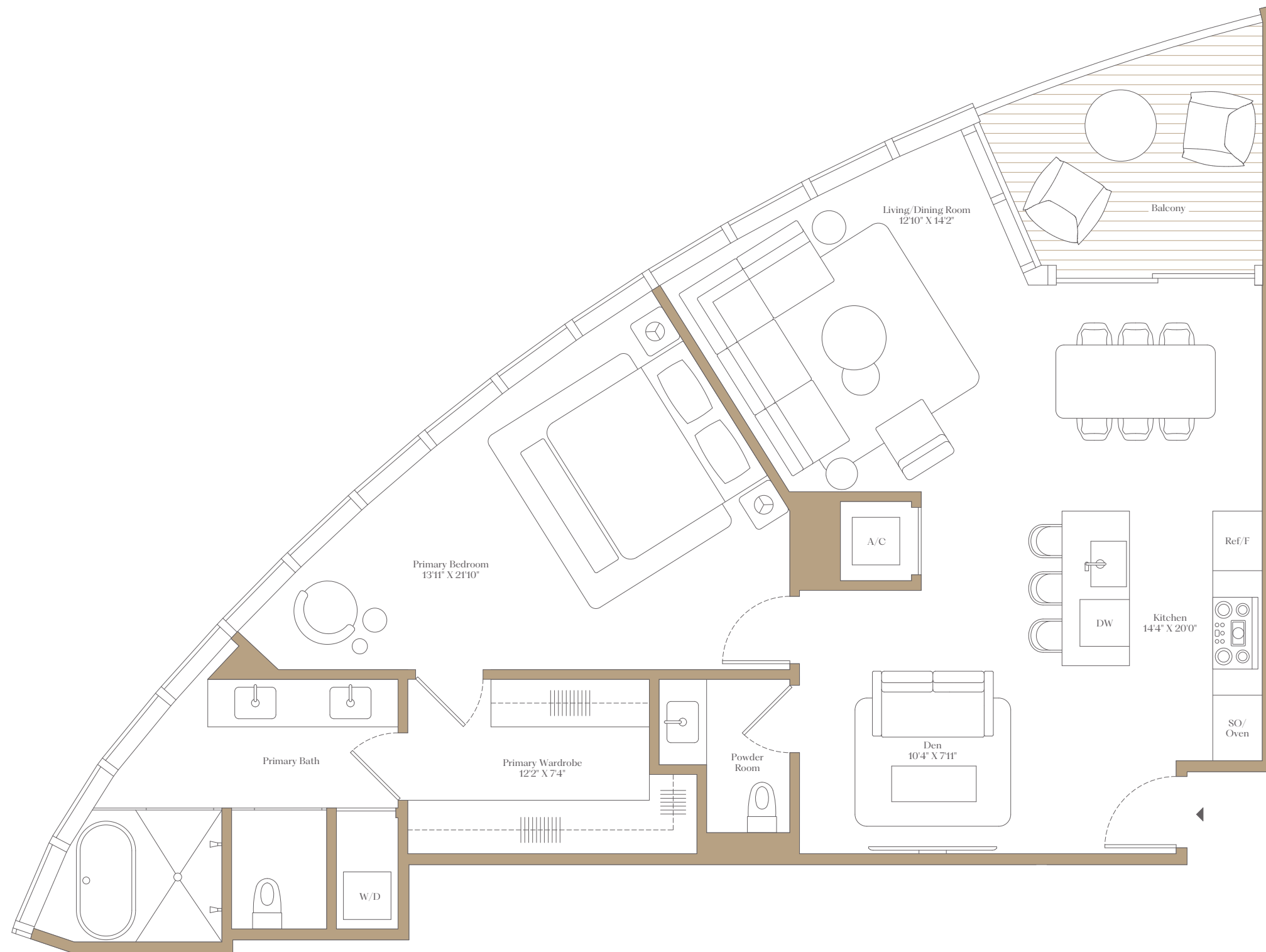
E

LEVELS

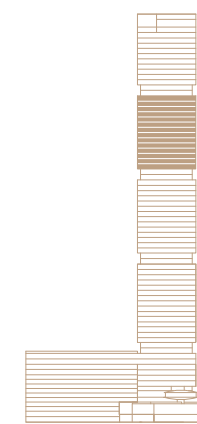
46-59

1 Bedrooms
1 Bathrooms
Powder Room
Den

Interior: 1,172 SF 109 SM
Exterior: 98 SF 9 SM
Total: 1,270 SF 118 SM



BISCAYNE BAY



BRICKELL AVENUE



North arrow symbol

BY NOBU • FOSTER + PARTNERS

ORAL REPRESENTATIONS CANNOT BE RELIED UPON AS CORRECTLY STATING THE REPRESENTATIONS OF THE DEVELOPER. FOR CORRECT REPRESENTATIONS, MAKE REFERENCE TO THIS BROCHURE AND TO THE DOCUMENTS REQUIRED BY SECTION 718.503, FLORIDA STATUTES, TO BE FURNISHED BY A DEVELOPER TO A BUYER OR LESSEE.

619 Brickell Condominium a/k/a 619 Brickell BY NOBU • FOSTER + PARTNERS

SEE LEGAL DISCLAIMERS ON FINAL PAGE

There are various recognized methods for calculating the square footage of a Unit. The square footage and dimensions stated hereon are measured to the exterior boundaries of the exterior walls and the centerline of interior demising walls and in fact vary from the dimensions that would be determined by using the description and definition of the "Unit" set forth in the Declaration (which generally only includes the interior airspace between the perimeter walls and excludes interior structural components). For your reference, the area of the Unit, determined in accordance with those defined unit boundaries, is set forth in the Declaration. Note that measurements of rooms set forth on this floor plan are generally taken at the greatest points of each given room (as if the room were a perfect rectangle), without regard for any cutouts. Accordingly, the area of the actual room will typically be smaller than the product obtained by multiplying the stated length times width. The dimensions and square footage stated for this Unit floor plan are approximate and may vary with actual construction, and all floor plans and development plans are subject to change. All depictions of furnishings, appliances, built-ins, counters, soffits, floor coverings, lighting and other matters of detail, including, without limitation, items of finish and decoration, are conceptual only and are not necessarily included in each Unit. Balconies depicted may vary by floor and are not included in the Unit boundaries. Consult the Developer's prospectus for information on what is offered with the Unit.



BRICKELL

COLLECTION

4

RESIDENCE

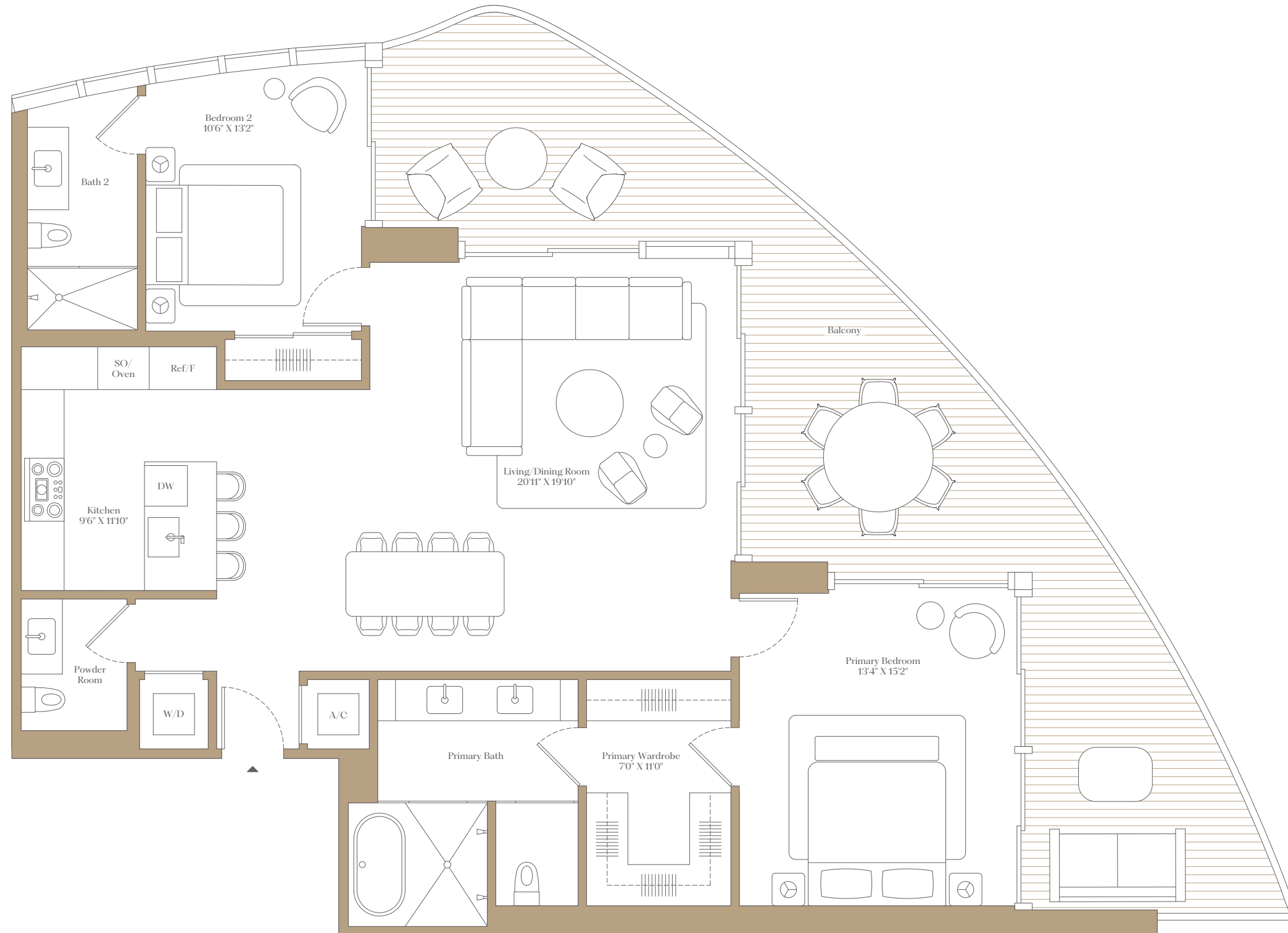
D

LEVELS

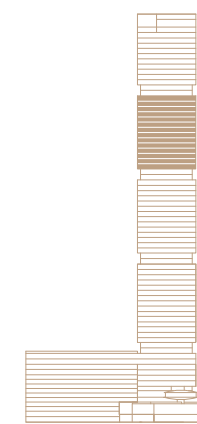
46-59

2 Bedrooms
2 Bathrooms
Powder Room

Interior: 1,489 SF 138 SM
Exterior: 523 SF 49 SM
Total: 2,012 SF 187 SM



BISCAYNE BAY



BRICKELL AVENUE



02

BY NOBU • FOSTER + PARTNERS

ORAL REPRESENTATIONS CANNOT BE RELIED UPON AS CORRECTLY STATING THE REPRESENTATIONS OF THE DEVELOPER. FOR CORRECT REPRESENTATIONS, MAKE REFERENCE TO THIS BROCHURE AND TO THE DOCUMENTS REQUIRED BY SECTION 718.503, FLORIDA STATUTES, TO BE FURNISHED BY A DEVELOPER TO A BUYER OR LESSEE.

619 Brickell Condominium a/k/a 619 Brickell BY NOBU • FOSTER + PARTNERS

SEE LEGAL DISCLAIMER ON FINAL PAGE

There are various recognized methods for calculating the square footage of a Unit. The square footage and dimensions stated hereon are measured to the exterior boundaries of the exterior walls and the centerline of interior demising walls and in fact vary from the dimensions that would be determined by using the description and definition of the "Unit" set forth in the Declaration (which generally only includes the interior airspace between the perimeter walls and excludes interior structural components). For your reference, the area of the Unit, determined in accordance with those defined unit boundaries, is set forth in the Declaration. Note that measurements of rooms set forth on this floor plan are generally taken at the greatest points of each given room (as if the room were a perfect rectangle), without regard for any cutouts. Accordingly, the area of the actual room will typically be smaller than the product obtained by multiplying the stated length times width. The dimensions and square footage stated for this Unit floor plan are approximate and may vary with actual construction, and all floor plans and development plans are subject to change. All depictions of furnishings, appliances, built-ins, counters, soffits, floor coverings, lighting and other matters of detail, including, without limitation, items of finish and decoration, are conceptual only and are not necessarily included in each Unit. Balconies depicted may vary by floor and are not included in the Unit boundaries. Consult the Developer's prospectus for information on what is offered with the Unit.

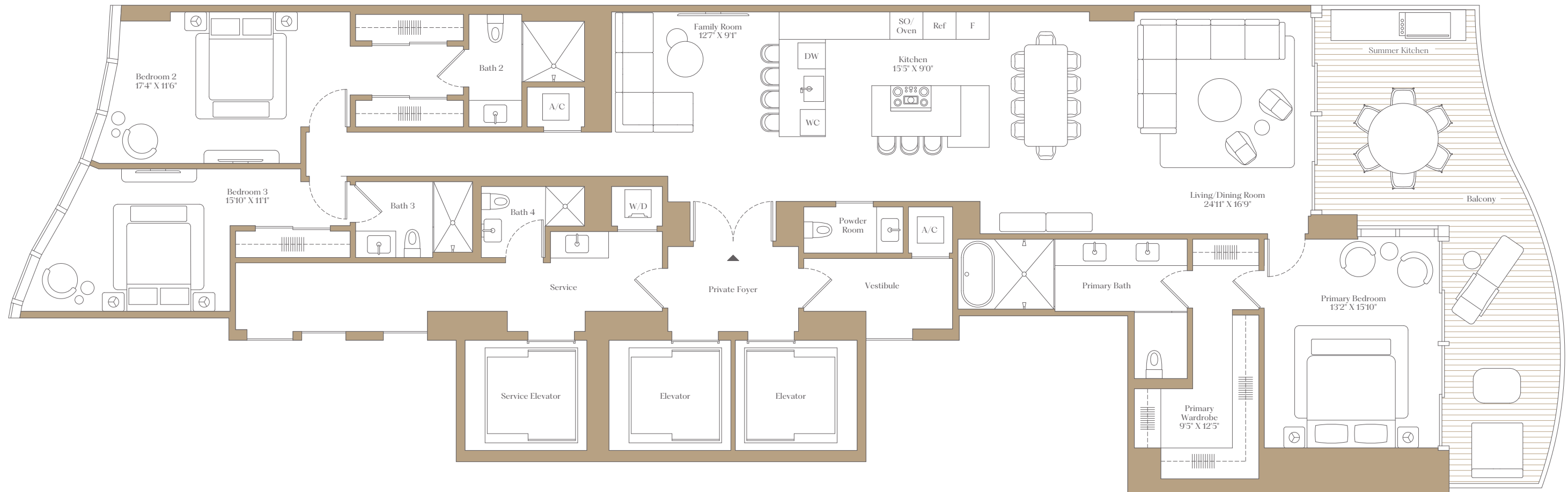


BRICKELL

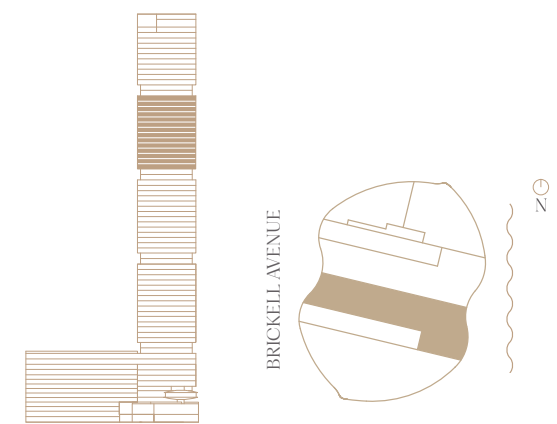
COLLECTION RESIDENCE LEVELS
4 B 46-59

3 Bedrooms
4 Bathrooms
Powder Room
Den

Interior: 2,763 SF 257 SM
Exterior: 389 SF 36 SM
Total: 3,152 SF 293 SM



BISCAYNE BAY



BY NOBU • FOSTER + PARTNERS

ORAL REPRESENTATIONS CANNOT BE RELIED UPON AS CORRECTLY STATING THE REPRESENTATIONS OF THE DEVELOPER. FOR CORRECT REPRESENTATIONS, MAKE REFERENCE TO THIS BROCHURE AND TO THE DOCUMENTS REQUIRED BY SECTION 718.503, FLORIDA STATUTES, TO BE FURNISHED BY A DEVELOPER TO A BUYER OR LESSEE.

619 Brickell Condominium a/k/a 619 Brickell BY NOBU • FOSTER + PARTNERS

SEE LEGAL DISCLAIMERS ON FINAL PAGE

There are various recognized methods for calculating the square footage of a Unit. The square footage and dimensions stated hereon are measured to the exterior boundaries of the exterior walls and the centerline of interior demising walls and in fact vary from the dimensions that would be determined by using the description and definition of the "Unit" set forth in the Declaration (which generally only includes the interior airspace between the perimeter walls and excludes interior structural components). For your reference, the area of the Unit, determined in accordance with those defined unit boundaries, is set forth in the Declaration. Note that measurements of rooms set forth on this floor plan are generally taken at the greatest points of each given room (as if the room were a perfect rectangle), without regard for any cutouts. Accordingly, the area of the actual room will typically be smaller than the product obtained by multiplying the stated length times width. The dimensions and square footage stated for this Unit floor plan are approximate and may vary with actual construction, and all floor plans and development plans are subject to change. All depictions of furnishings, appliances, built-ins, counters, soffits, floor coverings, lighting and other matters of detail, including, without limitation, items of finish and decoration, are conceptual only and are not necessarily included in each Unit. Balconies depicted may vary by floor and are not included in the Unit boundaries. Consult the Developer's prospectus for information on what is offered with the Unit.



BRICKELL

COLLECTION

4

RESIDENCE

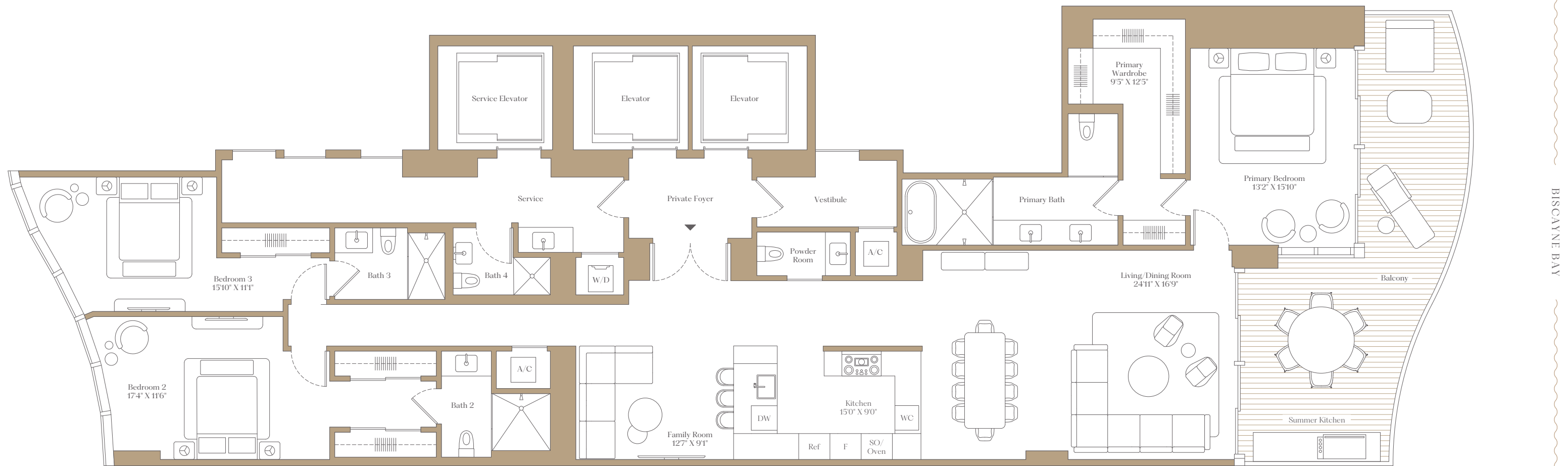
C

LEVELS

46-59

3 Bedrooms
4 Bathrooms
Powder Room
Den

Interior: 2,757 SF 256 SM
Exterior: 387 SF 36 SM
Total: 3,144 SF 292 SM

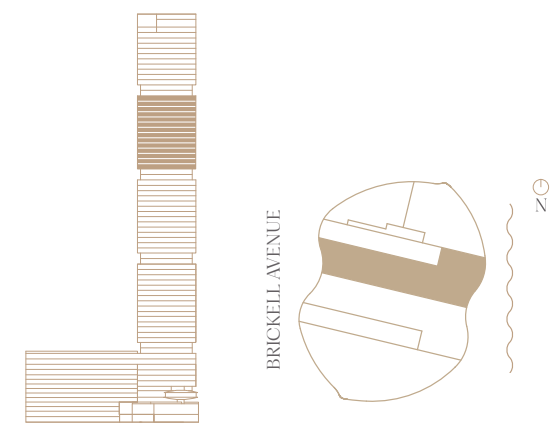


BISCAYNE BAY

BY NOBU • FOSTER + PARTNERS

ORAL REPRESENTATIONS CANNOT BE RELIED UPON AS CORRECTLY STATING THE REPRESENTATIONS OF THE DEVELOPER. FOR CORRECT REPRESENTATIONS, MAKE REFERENCE TO THIS BROCHURE AND TO THE DOCUMENTS REQUIRED BY SECTION 718.503, FLORIDA STATUTES, TO BE FURNISHED BY A DEVELOPER TO A BUYER OR LESSEE.

619 Brickell Condominium a/k/a 619 Brickell BY NOBU • FOSTER + PARTNERS



SEE LEGAL DISCLAIMERS ON FINAL PAGE

There are various recognized methods for calculating the square footage of a Unit. The square footage and dimensions stated hereon are measured to the exterior boundaries of the exterior walls and the centerline of interior demising walls and in fact vary from the dimensions that would be determined by using the description and definition of the "Unit" set forth in the Declaration (which generally only includes the interior airspace between the perimeter walls and excludes interior structural components). For your reference, the area of the Unit, determined in accordance with those defined unit boundaries, is set forth in the Declaration. Note that measurements of rooms set forth on this floor plan are generally taken at the greatest points of each given room (as if the room were a perfect rectangle), without regard for any cutouts. Accordingly, the area of the actual room will typically be smaller than the product obtained by multiplying the stated length times width. The dimensions and square footage stated for this Unit floor plan are approximate and may vary with actual construction, and all floor plans and development plans are subject to change. All depictions of furnishings, appliances, built-ins, counters, soffits, floor coverings, lighting and other matters of detail, including, without limitation, items of finish and decoration, are conceptual only and are not necessarily included in each Unit. Balconies depicted may vary by floor and are not included in the Unit boundaries. Consult the Developer's prospectus for information on what is offered with the Unit.



BRICKELL

COLLECTION

4

RESIDENCE

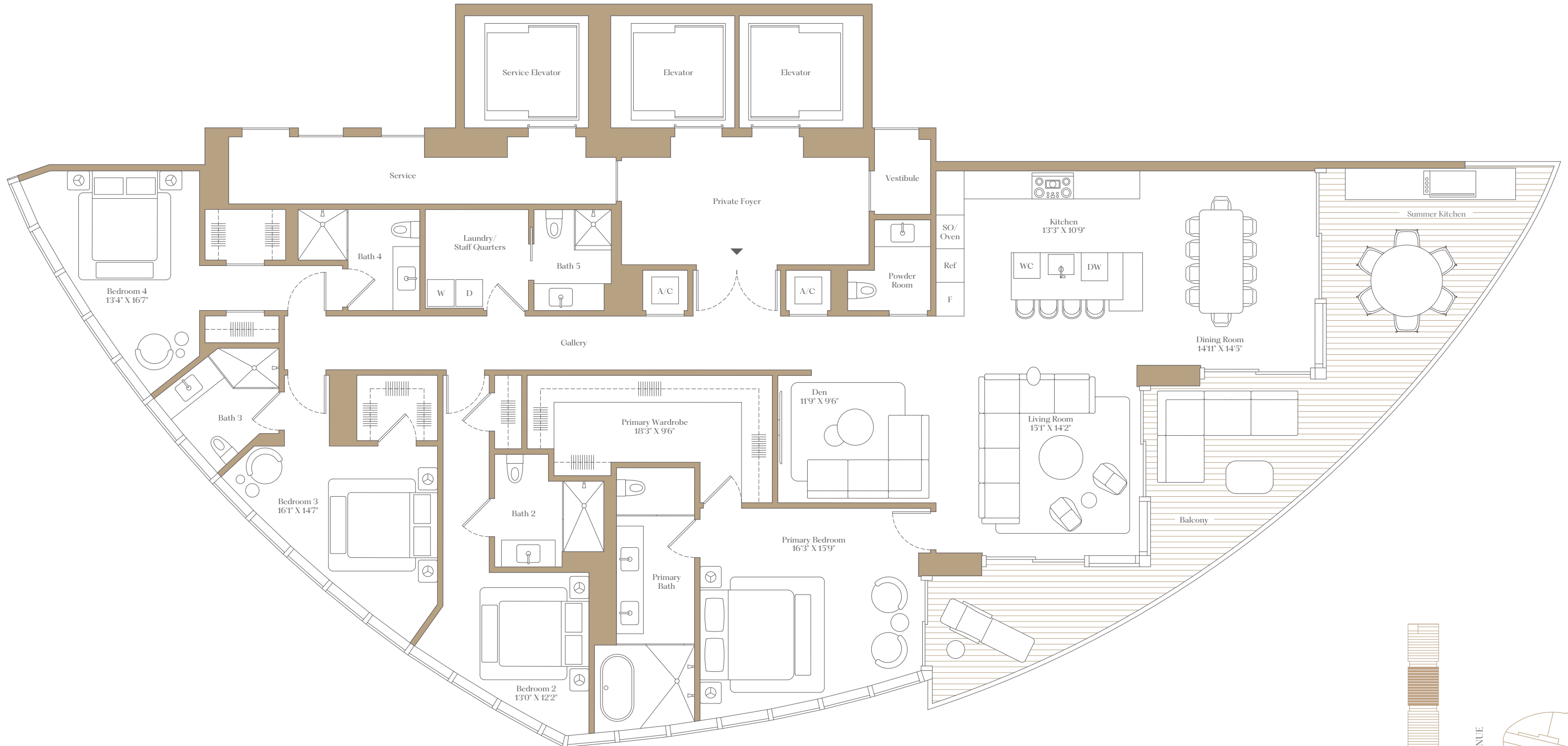
A

LEVELS

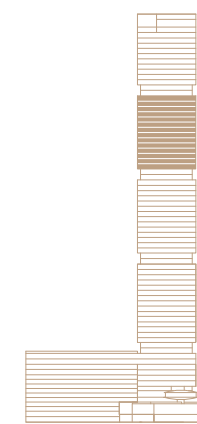
46-59

4 Bedrooms
5 Bathrooms
Powder Room
Den

Interior: 3,178 SF 295 SM
Exterior: 515 SF 48 SM
Total: 3,693 SF 343 SM



BISCAYNE BAY



BRICKELL AVENUE



02

BY NOBU • FOSTER + PARTNERS

ORAL REPRESENTATIONS CANNOT BE RELIED UPON AS CORRECTLY STATING THE REPRESENTATIONS OF THE DEVELOPER. FOR CORRECT REPRESENTATIONS, MAKE REFERENCE TO THIS BROCHURE AND TO THE DOCUMENTS REQUIRED BY SECTION 718.503, FLORIDA STATUTES, TO BE FURNISHED BY A DEVELOPER TO A BUYER OR LESSEE.

619 Brickell Condominium a/k/a 619 Brickell BY NOBU • FOSTER + PARTNERS

SEE LEGAL DISCLAIMER ON FINAL PAGE

There are various recognized methods for calculating the square footage of a Unit. The square footage and dimensions stated hereon are measured to the exterior boundaries of the exterior walls and the centerline of interior demising walls and in fact vary from the dimensions that would be determined by using the description and definition of the "Unit" set forth in the Declaration (which generally only includes the interior airspace between the perimeter walls and excludes interior structural components). For your reference, the area of the Unit, determined in accordance with those defined unit boundaries, is set forth in the Declaration. Note that measurements of rooms set forth on this floor plan are generally taken at the greatest points of each given room (as if the room were a perfect rectangle), without regard for any cutouts. Accordingly, the area of the actual room will typically be smaller than the product obtained by multiplying the stated length times width. The dimensions and square footage stated for this Unit floor plan are approximate and may vary with actual construction, and all floor plans and development plans are subject to change. All depictions of furnishings, appliances, built-ins, counters, soffits, floor coverings, lighting and other matters of detail, including, without limitation, items of finish and decoration, are conceptual only and are not necessarily included in each Unit. Balconies depicted may vary by floor and are not included in the Unit boundaries. Consult the Developer's prospectus for information on what is offered with the Unit.