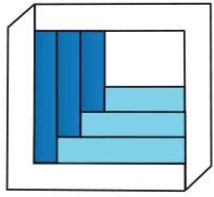


**CENTURY**  
**PARK SQUARE**  
**NORTH**

**B-PERUGIA**



# CENTURY PARK SQUARE NORTH

## B-PERUGIA

2 Story

3 Bedrooms | 2.5 Baths

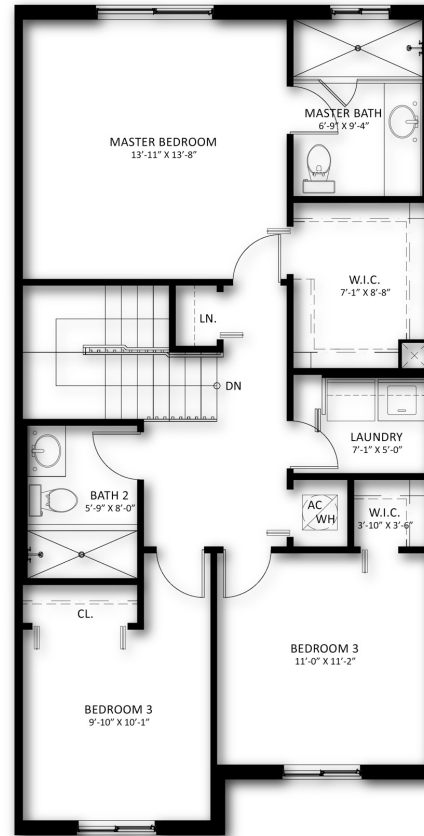
1 Car Garage

AC Area	1,650 sq. ft.
1 Car Garage	211 sq. ft.
Other Areas	59 sq. ft.
Total:	1,885 sq. ft.



Stated dimensions are measured to the exterior boundaries of the exterior walls and the centerline of interior demising walls and in fact vary from the dimensions that would be determined by using the description and definition set forth in the Declaration (which generally only includes the interior airspace between the perimeter walls and excludes interior structural components). Note that measurements of rooms set forth on this floor plan are generally taken at the greatest points of each give room (as if the room were a perfect rectangle), without regard for any cutouts. Accordingly, the area of the actual room will typically be smaller than the product obtained by multiplying the stated length times width.

All dimensions are approximate and may vary with actual construction, and all floor plans and development plans are subject to change.



2ND FLOOR



1ST FLOOR