

The Standard

RESIDENCES

BRICKELL MIAMI

RESIDENCE 12

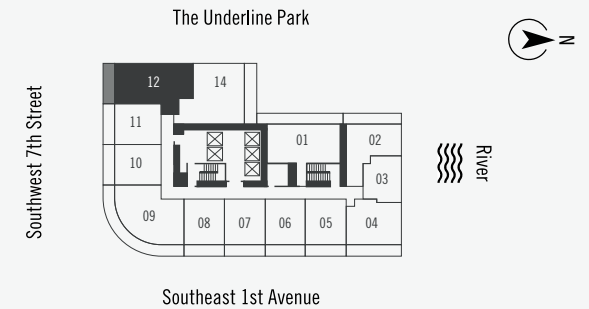
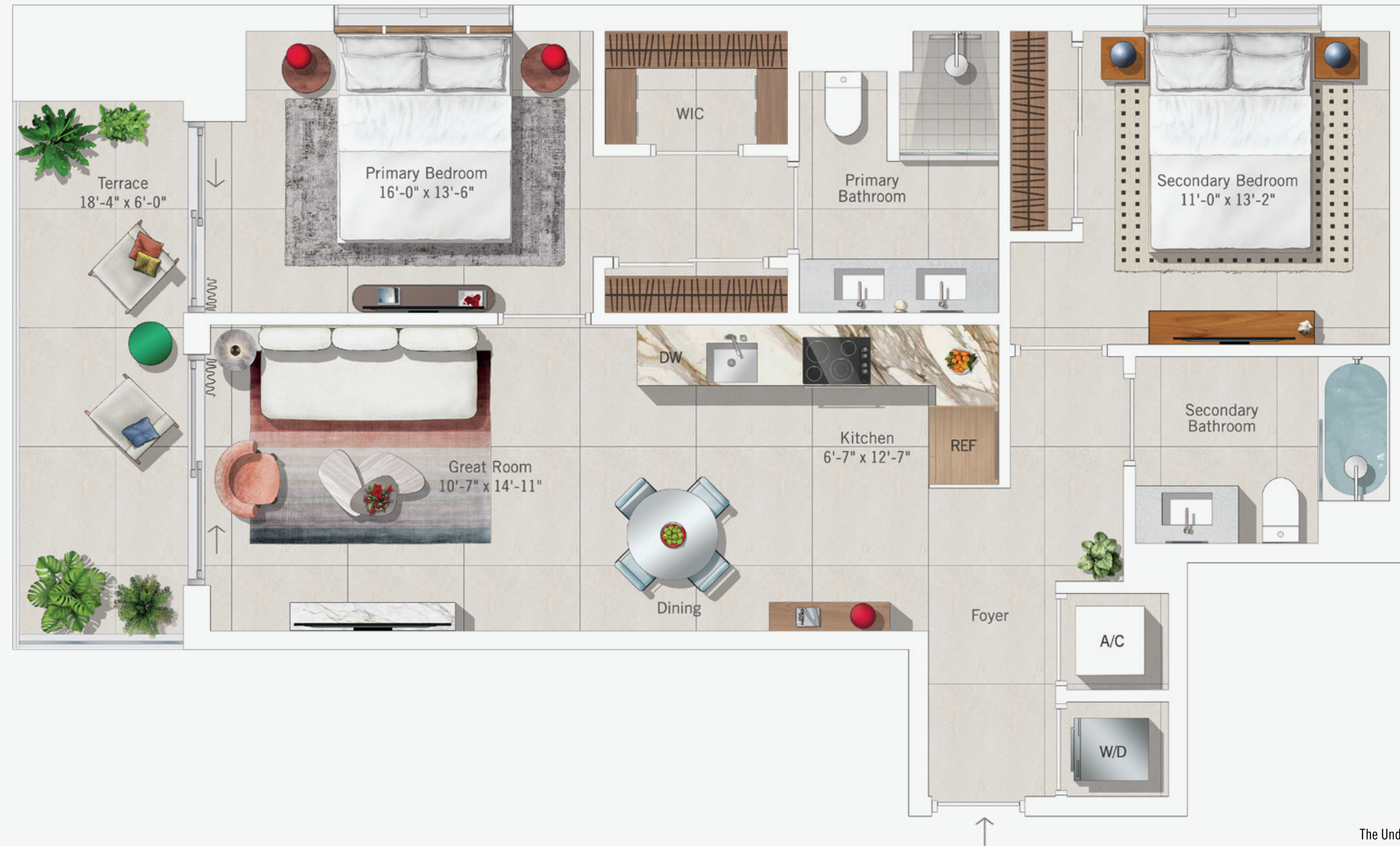
**2 BEDROOMS – 2 BATH
LEVEL 11 – 41**

Interior 962 SF/89 M²

Terrace 112 SF/10 M²

Total 1,074 SF - 99 M²

Faces Southwest



Furniture, accessories, and layout are for illustrative purposes only.
Residences are delivered unfurnished unless a furniture upgrade package is purchased.

THE BUILDING
690 SW 1st Avenue
Miami, Florida 33130

ORAL REPRESENTATIONS CANNOT BE RELIED UPON AS CORRECTLY STATING THE REPRESENTATIONS OF THE DEVELOPER. FOR CORRECT REPRESENTATIONS, MAKE REFERENCE TO THIS BROCHURE AND TO THE DOCUMENTS REQUIRED BY SECTION 718.503, FLORIDA STATUTES, TO BE FURNISHED BY A DEVELOPER TO A BUYER OR LESSEE. This project is being developed by Loftly™ Brickell LLC (the "Developer"), which was formed solely for such purpose. Any other parties described herein are not the Developer of this project. This Condominium and project are being developed by Loftly™ Brickell LLC, a Delaware limited liability company ("Developer"), which has a limited right to use the trademarked names and logos of Standard International Management, LLC pursuant to a license and marketing agreement with Standard International Management, LLC. Any and all statements, disclosures and/or representations shall be deemed made by Developer and not by Standard International Management, LLC and you agree to look solely to Developer (and not to Standard International Management, LLC and/or any of its affiliates) with respect to any and all matters relating to the marketing and/or development of the Condominium and project and with respect to the sales of units in the Condominium and project. Stated dimensions are measured to the exterior boundaries of the exterior walls and the centerline of interior demising walls and in fact vary from the dimensions that would be determined by using the description and definition of the "Unit" set forth in the Declaration (which generally only includes the interior airspace between the perimeter walls and excludes interior structural components). For your reference, the area of the Unit, determined in accordance with those defined unit boundaries, is 1,386 SF – 129 M². Note that measurements of rooms set forth on this floor plan are generally taken at the greatest points of each given room (as if the room were a perfect rectangle), without regard for any cutouts. Accordingly, the area of the actual room will typically be smaller than the product obtained by multiplying the stated length times width. All dimensions are approximate and may vary with actual construction, and all floor plans and development plans are subject to change. The sketches, renderings, graphic materials, plans, specifications, terms, conditions and statements contained in this brochure are proposed only and may not be applicable to all Units and the Developer reserves the right to modify, revise or withdraw any or all of same in its sole discretion and without prior notice. All improvements, designs and construction are subject to first obtaining the appropriate federal, state and local permits and approvals for same. All depictions of appliances, counters, soffits, floor coverings and other furniture, fixtures, equipment and matters of detail, including, without limitation, items of finish and decoration, are conceptual only and are not necessarily included in each Unit. Consult your Agreement and the Prospectus for the items included with the Unit. Dimensions and square footage are approximate and may vary with actual construction.

The Standard

RESIDENCES

BRICKELL MIAMI

RESIDENCE 09

**2 BEDROOMS – 2 BATH
LEVEL 11 – 41**

Interior 960 SF/89 M²

Terrace 381 SF/35 M²

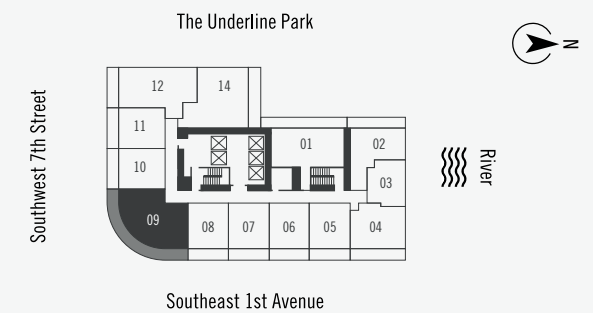
Total 1,341 SF - 125 M²

Faces Southeast



Furniture, accessories, and layout are for illustrative purposes only.
Residences are delivered unfurnished unless a furniture upgrade package is purchased.

THE BUILDING
690 SW 1st Avenue
Miami, Florida 33130



ORAL REPRESENTATIONS CANNOT BE RELIED UPON AS CORRECTLY STATING THE REPRESENTATIONS OF THE DEVELOPER. FOR CORRECT REPRESENTATIONS, MAKE REFERENCE TO THIS BROCHURE AND TO THE DOCUMENTS REQUIRED BY SECTION 718.503, FLORIDA STATUTES, TO BE FURNISHED BY A DEVELOPER TO A BUYER OR LESSEE. This project is being developed by Loftly™ Brickell LLC (the "Developer"), which was formed solely for such purpose. Any other parties described herein are not the Developer of this project. This Condominium and project are being developed by Loftly™ Brickell LLC, a Delaware limited liability company ("Developer"), which has a limited right to use the trademarked names and logos of Standard International Management, LLC pursuant to a license and marketing agreement with Standard International Management, LLC. Any and all statements, disclosures and/or representations shall be deemed made by Developer and not by Standard International Management, LLC and you agree to look solely to Developer (and not to Standard International Management, LLC and/or any of its affiliates) with respect to any and all matters relating to the marketing and/or development of the Condominium and project and with respect to the sales of units in the Condominium and project. Stated dimensions are measured to the exterior boundaries of the exterior walls and the centerline of interior demising walls and in fact vary from the dimensions that would be determined by using the description and definition of the "Unit" set forth in the Declaration (which generally only includes the interior airspace between the perimeter walls and excludes interior structural components). For your reference, the area of the Unit, determined in accordance with those defined unit boundaries, is 1,386 SF – 129 M². Note that measurements of rooms set forth on this floor plan are generally taken at the greatest points of each given room (as if the room were a perfect rectangle), without regard for any cutouts. Accordingly, the area of the actual room will typically be smaller than the product obtained by multiplying the stated length times width. All dimensions are approximate and may vary with actual construction, and all floor plans and development plans are subject to change. The sketches, renderings, graphic materials, plans, specifications, terms, conditions and statements contained in this brochure are proposed only and may not be applicable to all Units and the Developer reserves the right to modify, revise or withdraw any or all of same in its sole discretion and without prior notice. All improvements, designs and construction are subject to first obtaining the appropriate federal, state and local permits and approvals for same. All depictions of appliances, counters, soffits, floor coverings and other furniture, fixtures, equipment and matters of detail, including, without limitation, items of finish and decoration, are conceptual only and are not necessarily included in each Unit. Consult your Agreement and the Prospectus for the items included with the Unit. Dimensions and square footage are approximate and may vary with actual construction.

The Standard

RESIDENCES

BRICKELL MIAMI

RESIDENCE 01

**2 BEDROOMS – 2 BATH
LEVEL 11 – 41**

Interior 965 SF/90 M²

Terrace 279 SF/26 M²

Total 1,244 SF - 116 M²

Faces West

THE BUILDING
690 SW 1st Avenue
Miami, Florida 33130



Furniture, accessories, and layout are for illustrative purposes only.
Residences are delivered unfurnished unless a furniture upgrade package is purchased.

ORAL REPRESENTATIONS CANNOT BE RELIED UPON AS CORRECTLY STATING THE REPRESENTATIONS OF THE DEVELOPER. FOR CORRECT REPRESENTATIONS, MAKE REFERENCE TO THIS BROCHURE AND TO THE DOCUMENTS REQUIRED BY SECTION 718.503, FLORIDA STATUTES, TO BE FURNISHED BY A DEVELOPER TO A BUYER OR LESSEE. This project is being developed by Loftly™ Brickell LLC (the "Developer"), which was formed solely for such purpose. Any other parties described herein are not the Developer of this project. This Condominium and project are being developed by Loftly™ Brickell LLC, a Delaware limited liability company ("Developer"), which has a limited right to use the trademarked names and logos of Standard International Management, LLC pursuant to a license and marketing agreement with Standard International Management, LLC. Any and all statements, disclosures and/or representations shall be deemed made by Developer and not by Standard International Management, LLC and you agree to look solely to Developer (and not to Standard International Management, LLC and/or any of its affiliates) with respect to any and all matters relating to the marketing and/or development of the Condominium and project and with respect to the sales of units in the Condominium and project. Stated dimensions are measured to the exterior boundaries of the exterior walls and the centerline of interior demising walls and in fact vary from the dimensions that would be determined by using the description and definition of the "Unit" set forth in the Declaration (which generally only includes the interior airspace between the perimeter walls and excludes interior structural components). For your reference, the area of the Unit, determined in accordance with those defined unit boundaries, is 1,386 SF – 129 M². Note that measurements of rooms set forth on this floor plan are generally taken at the greatest points of each given room (as if the room were a perfect rectangle), without regard for any cutouts. Accordingly, the area of the actual room will typically be smaller than the product obtained by multiplying the stated length times width. All dimensions are approximate and may vary with actual construction, and all floor plans and development plans are subject to change. The sketches, renderings, graphic materials, plans, specifications, terms, conditions and statements contained in this brochure are proposed only and may not be applicable to all Units and the Developer reserves the right to modify, revise or withdraw any or all of same in its sole discretion and without prior notice. All improvements, designs and construction are subject to first obtaining the appropriate federal, state and local permits and approvals for same. All depictions of appliances, counters, soffits, floor coverings and other furniture, fixtures, equipment and matters of detail, including, without limitation, items of finish and decoration, are conceptual only and are not necessarily included in each Unit. Consult your Agreement and the Prospectus for the items included with the Unit. Dimensions and square footage are approximate and may vary with actual construction.