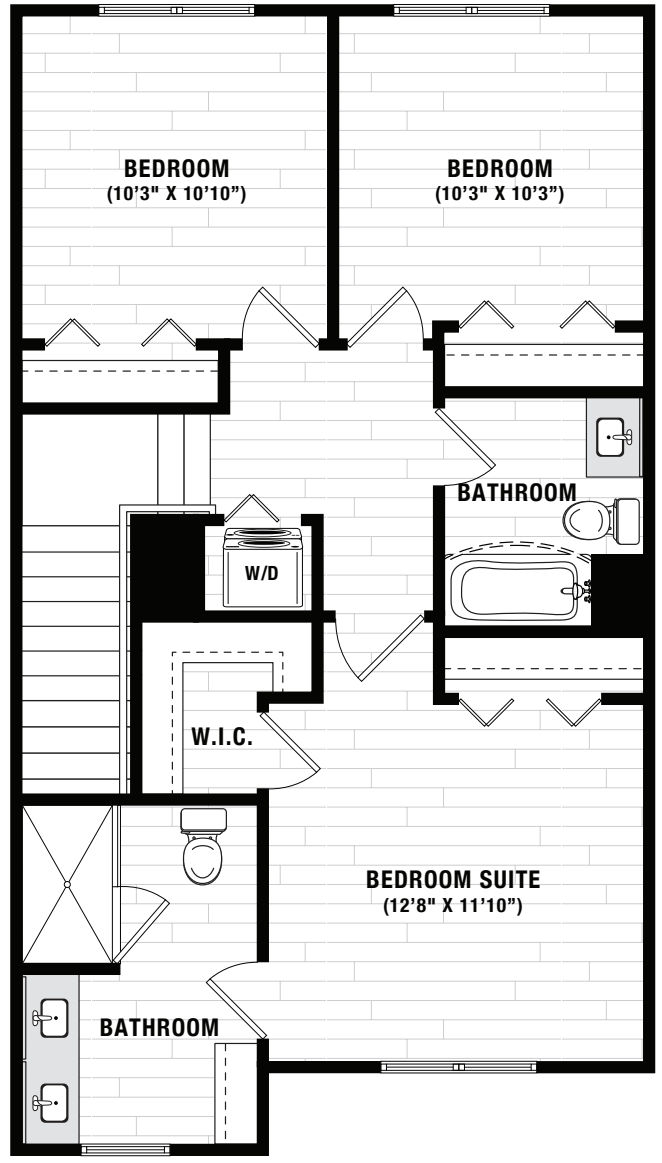
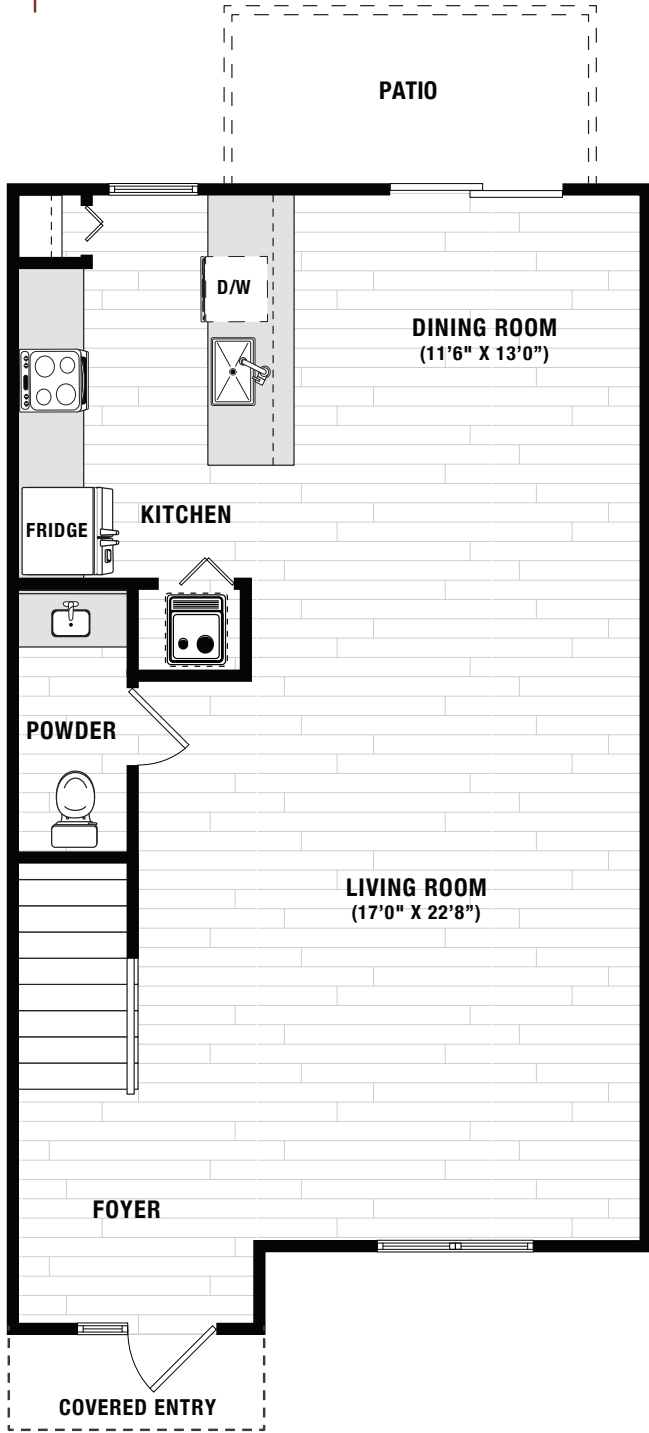


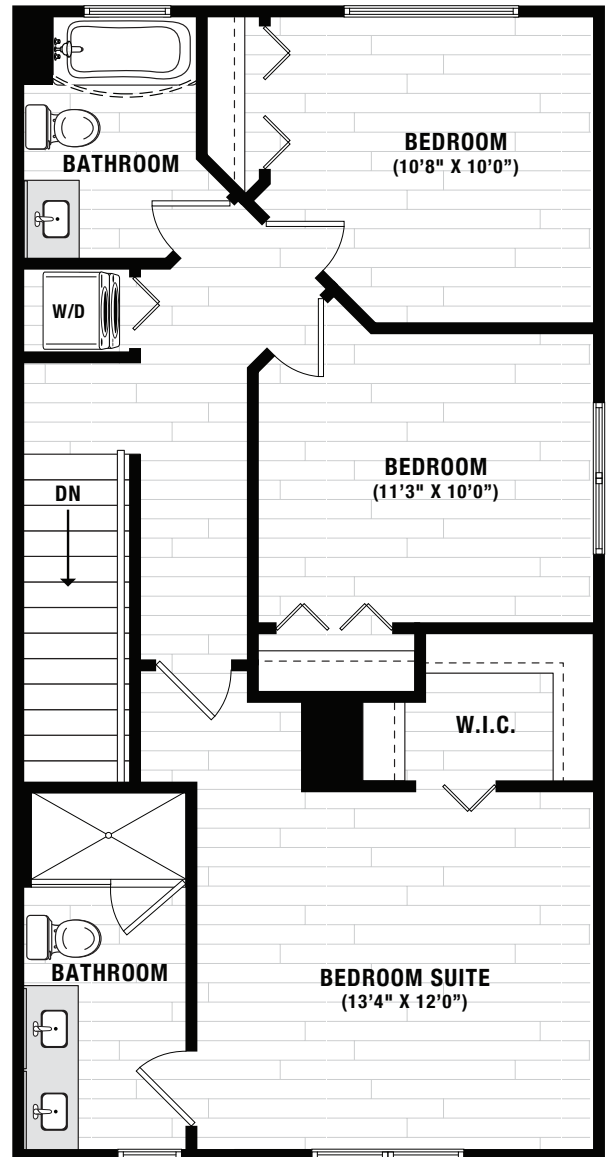
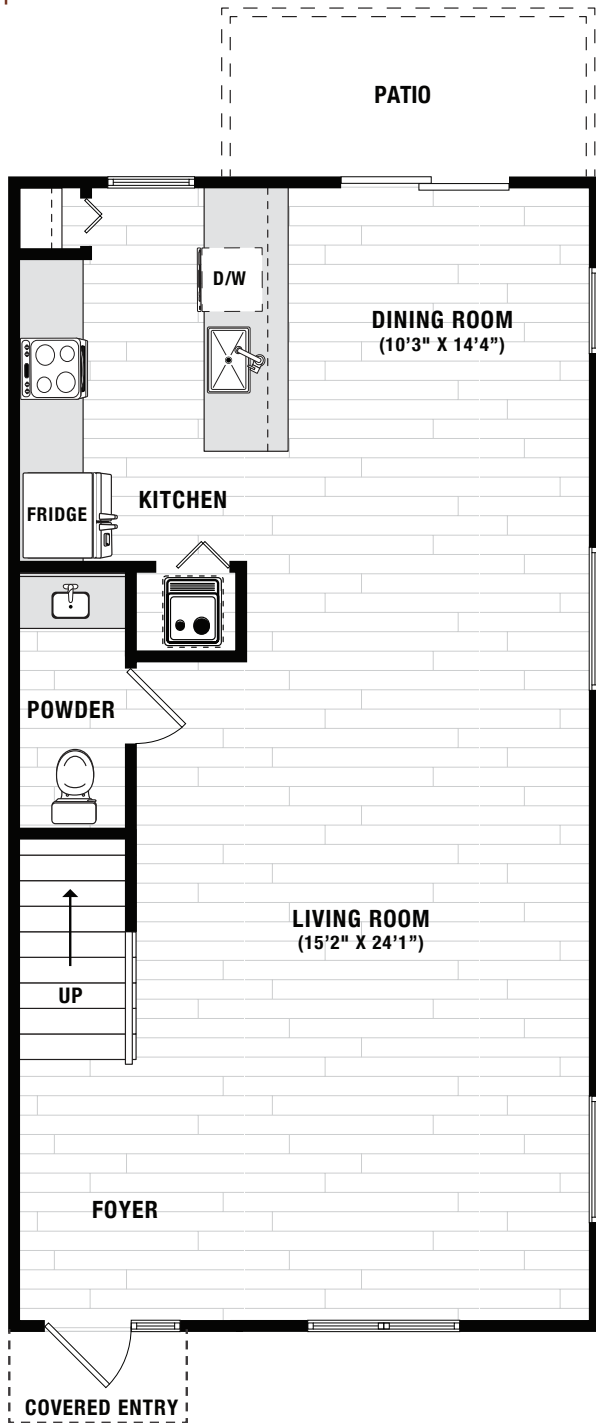
TWO STORY TOWNHOME
B | 3 BEDROOM | 2.5 BATHROOM | 1585 SQ. FT.



TWO STORY TOWNHOME
B1 | 3 BEDROOM | 2.5 BATHROOM | 1609 SQ. FT.

1001 NE 58TH STREET OAKLAND PARK, FL 33334





TWO STORY TOWNHOME

C | 3 BEDROOM | 2.5 BATHROOM | 1586 SQ. FT.