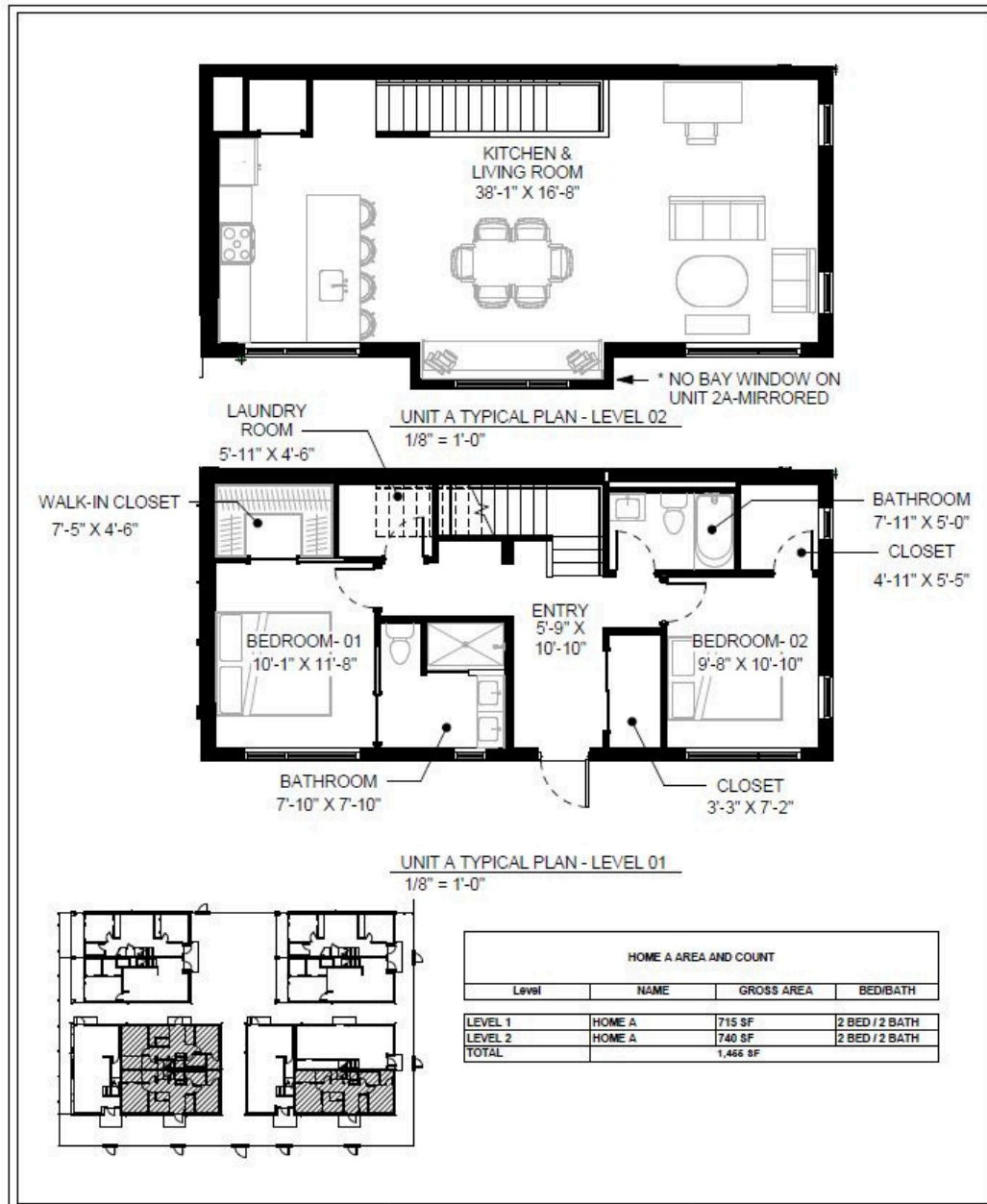


# Junction

TOWNHOMES

3601 1st Ave N  
 St Petersburg, FL  
 Home 1A, 2A, 2A-M  
 2 beds | 2 baths | 1455 SF | 1 parking



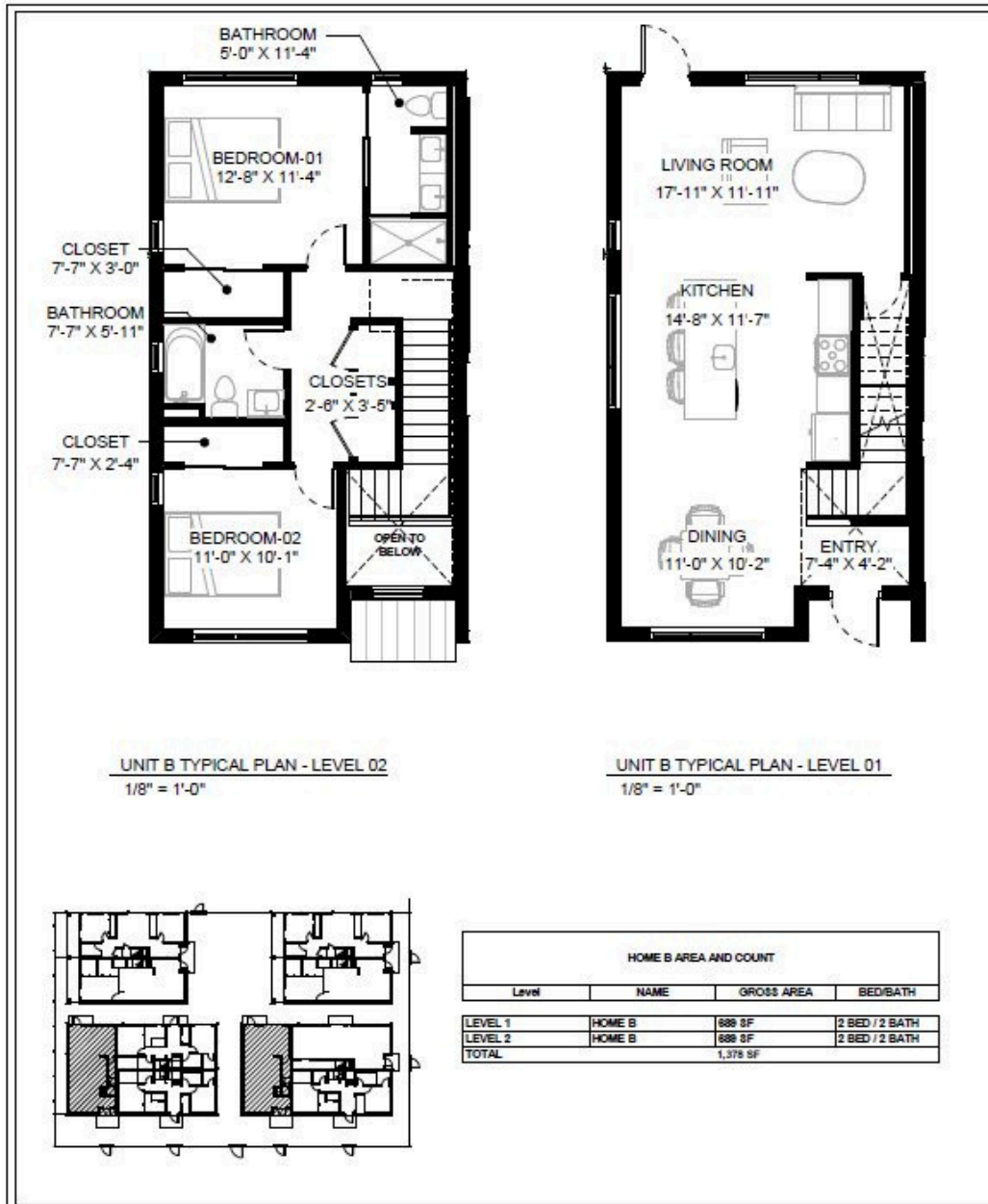
Floor plans are for illustration and general information only. As part of our ongoing commitment to product and design enhancements, final construction details—including elevations, square footage, layouts, materials, and colors—may differ. Buyers are responsible for verifying all information to their satisfaction.



# Junction

TOWNHOMES

3601 1st Ave N  
 St Petersburg, FL  
 Home 1B, 2B  
 2 beds | 2 baths | 1378 SF | 1 parking



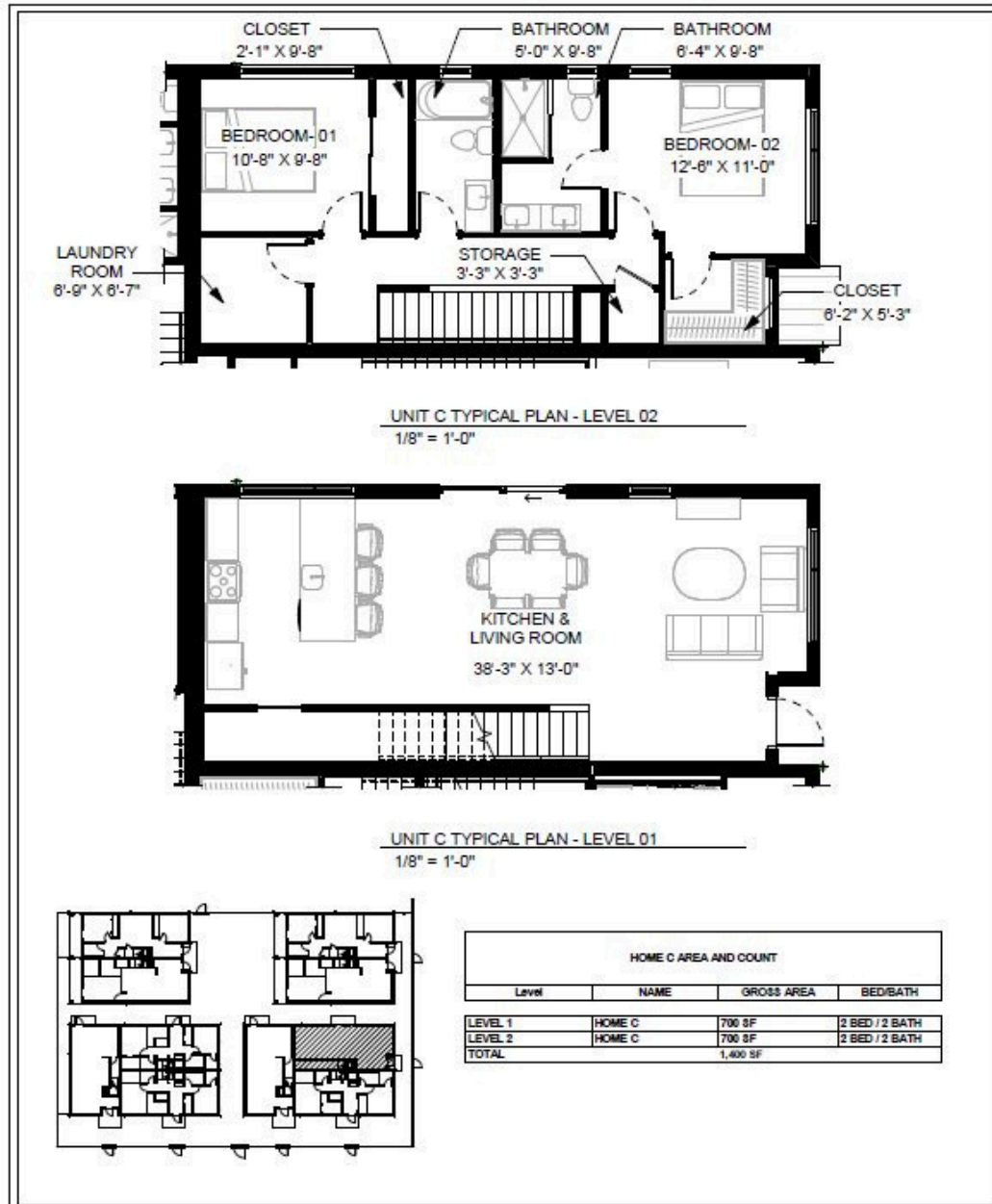
Floor plans are for illustration and general information only. As part of our ongoing commitment to product and design enhancements, final construction details—including elevations, square footage, layouts, materials, and colors—may differ. Buyers are responsible for verifying all information to their satisfaction.



# Junction

TOWNHOMES

3601 1st Ave N  
 St Petersburg, FL  
 Home 1C  
 2 beds | 2 baths | 1400 SF | 1 parking



Floor plans are for illustration and general information only. As part of our ongoing commitment to product and design enhancements, final construction details—including elevations, square footage, layouts, materials, and colors—may differ. Buyers are responsible for verifying all information to their satisfaction.

