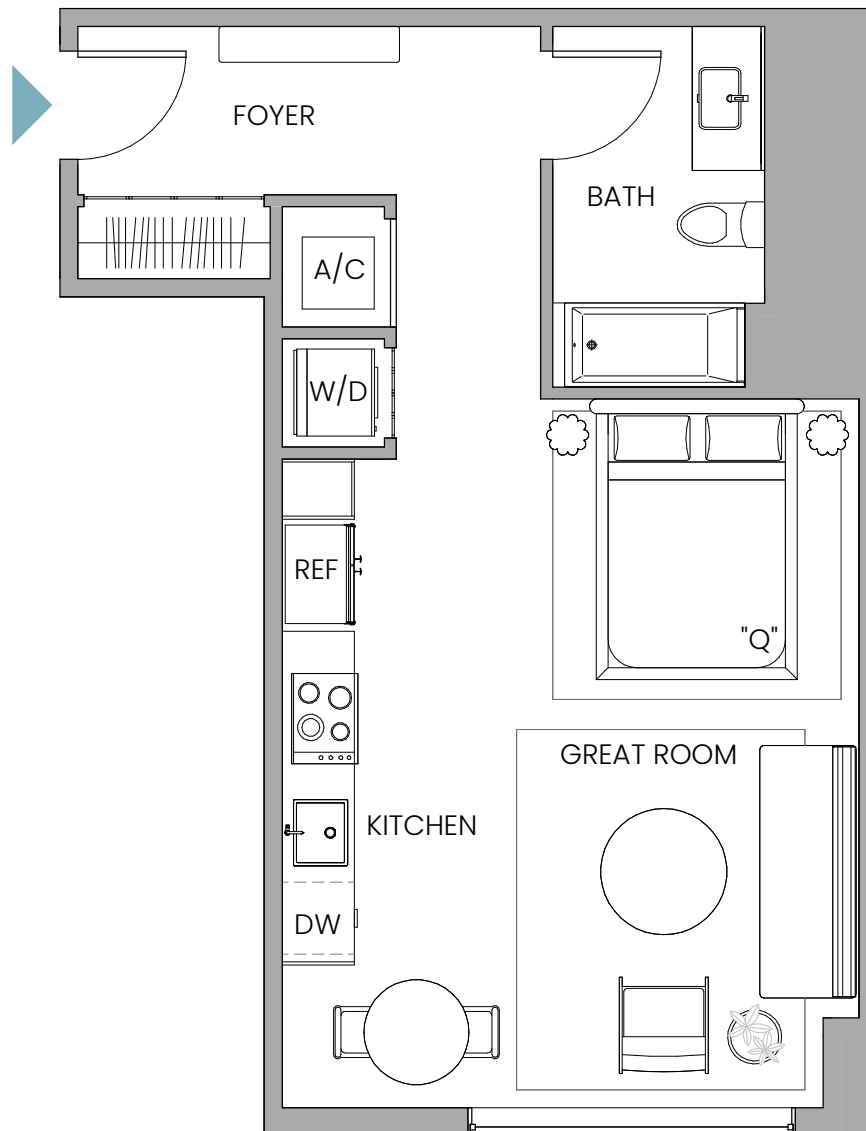


UNIT W1

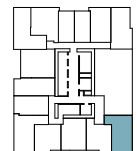
Line 14

Studio | 1 Bathroom

INTERIOR 567 SQ FT / 53 SQ M



FLOORS 06-09

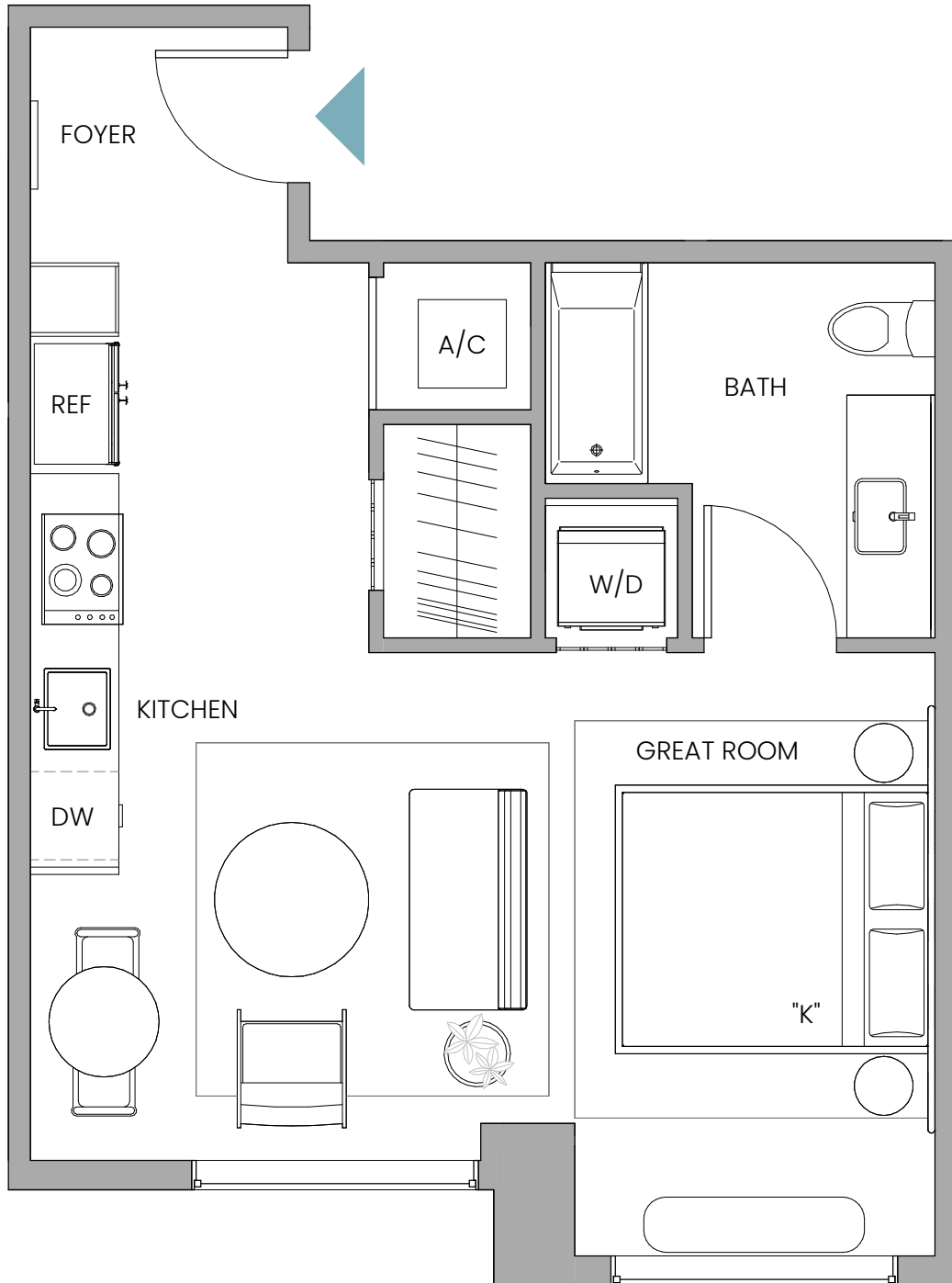


Stated dimensions are measured to the exterior boundaries of the exterior walls and the centerline of interior demising walls and in fact vary from the dimensions that would be determined by using the description and definition of the "Unit" set forth in the Declaration (which generally only includes the interior airspace between the perimeter walls and includes interior structural components). For your reference, the area of the Unit, determined in accordance with those defined unit boundaries, is 567 sq ft / 53 sq m. Note that measurements of rooms set forth on this floor plan are generally taken at the greatest points of each given room (as if the room were a perfect rectangle), without regard for any cutouts. Accordingly, the area of the actual room will typically be smaller than the product obtained by multiplying the stated length times width. All dimensions are approximate and may vary with actual construction, and all floor plans and development plans are subject to change.

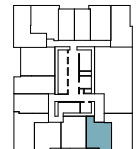
UNIT W2

Line 13

Studio | 1 Bathroom
INTERIOR 526 SF / 49 SM



FLOORS 06-09



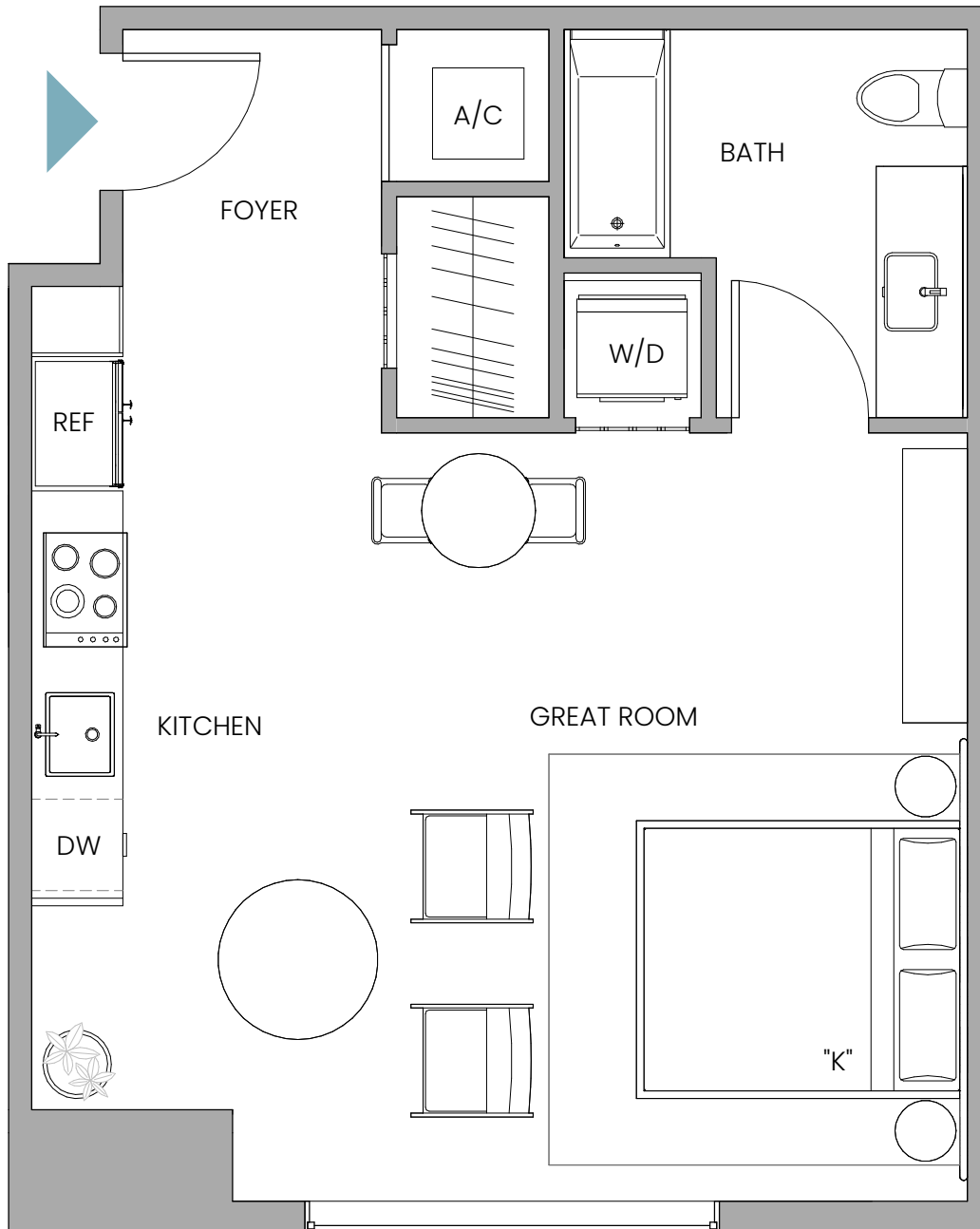
Stated dimensions are measured to the exterior boundaries of the exterior walls and the centerline of interior demising walls and in fact vary from the dimensions that would be determined by using the description and definition of the "Unit" set forth in the Declaration (which generally only includes the interior airspace between the perimeter walls and includes interior structural components). For your reference, the area of the Unit, determined in accordance with those defined unit boundaries, is 526 sq ft / 49 sq m. Note that measurements of rooms set forth on this floor plan are generally taken at the greatest points of each given room (as if the room were a perfect rectangle), without regard for any cutouts. Accordingly, the area of the actual room will typically be smaller than the product obtained by multiplying the stated length times width. All dimensions are approximate and may vary with actual construction, and all floor plans and development plans are subject to change.

UNIT W3

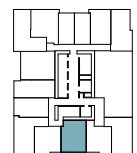
Line 12

Studio | 1 Bathroom

INTERIOR 550 SF / 51 SQ M



FLOORS 06-09



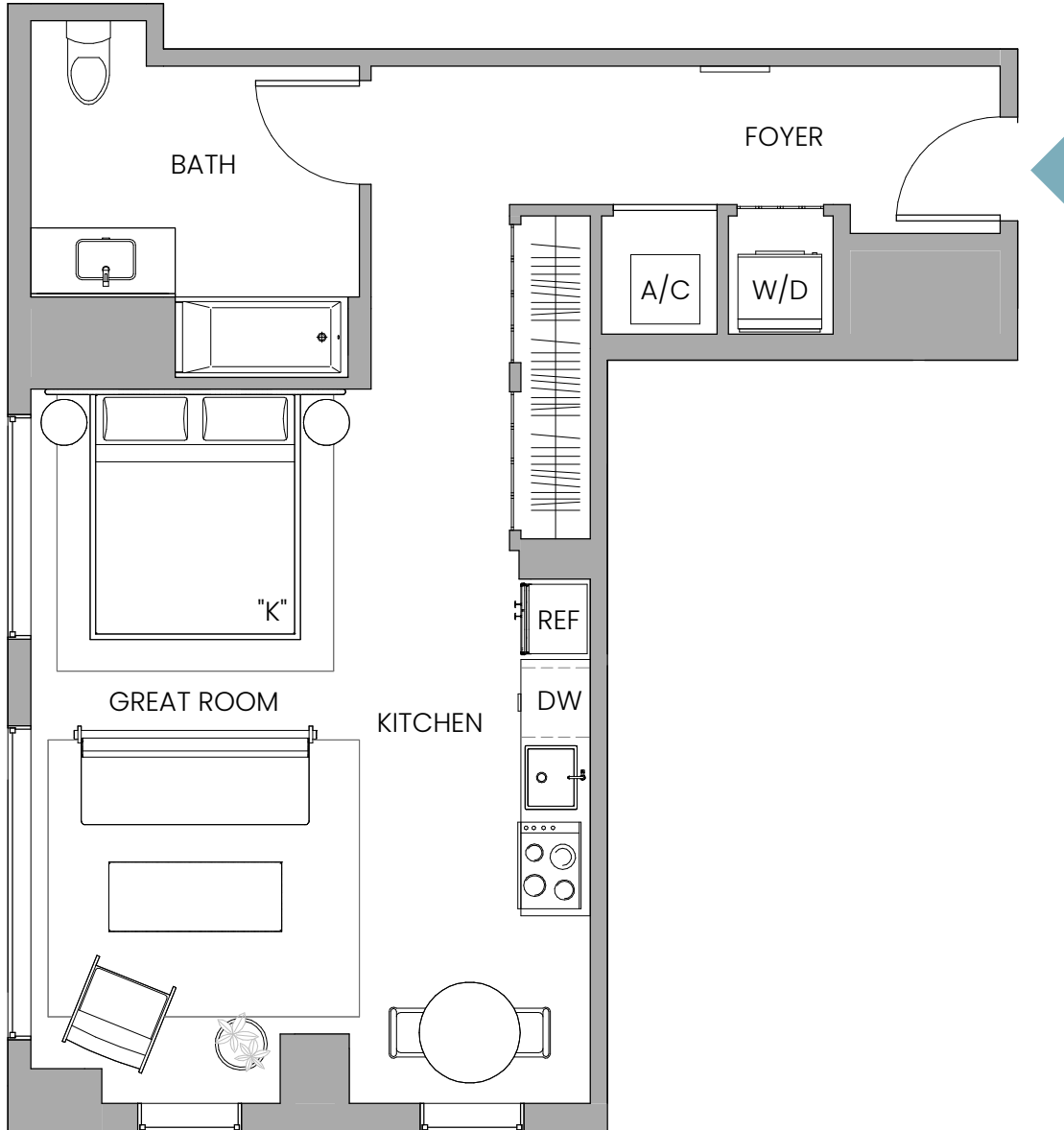
Stated dimensions are measured to the exterior boundaries of the exterior walls and the centerline of interior demising walls and in fact vary from the dimensions that would be determined by using the description and definition of the "Unit" set forth in the Declaration (which generally only includes the interior airspace between the perimeter walls and includes interior structural components). For your reference, the area of the Unit, determined in accordance with those defined unit boundaries, is 550 sq ft / 51 sq m. Note that measurements of rooms set forth on this floor plan are generally taken at the greatest points of each given room (as if the room were a perfect rectangle), without regard for any cutouts. Accordingly, the area of the actual room will typically be smaller than the product obtained by multiplying the stated length times width. All dimensions are approximate and may vary with actual construction, and all floor plans and development plans are subject to change.

UNIT W5

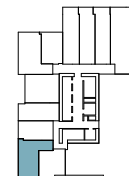
Line 10

Studio | 1 Bathroom

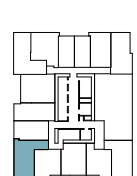
INTERIOR 629 SQ FT / 58 SQ M



FLOORS 02



FLOORS 06-09



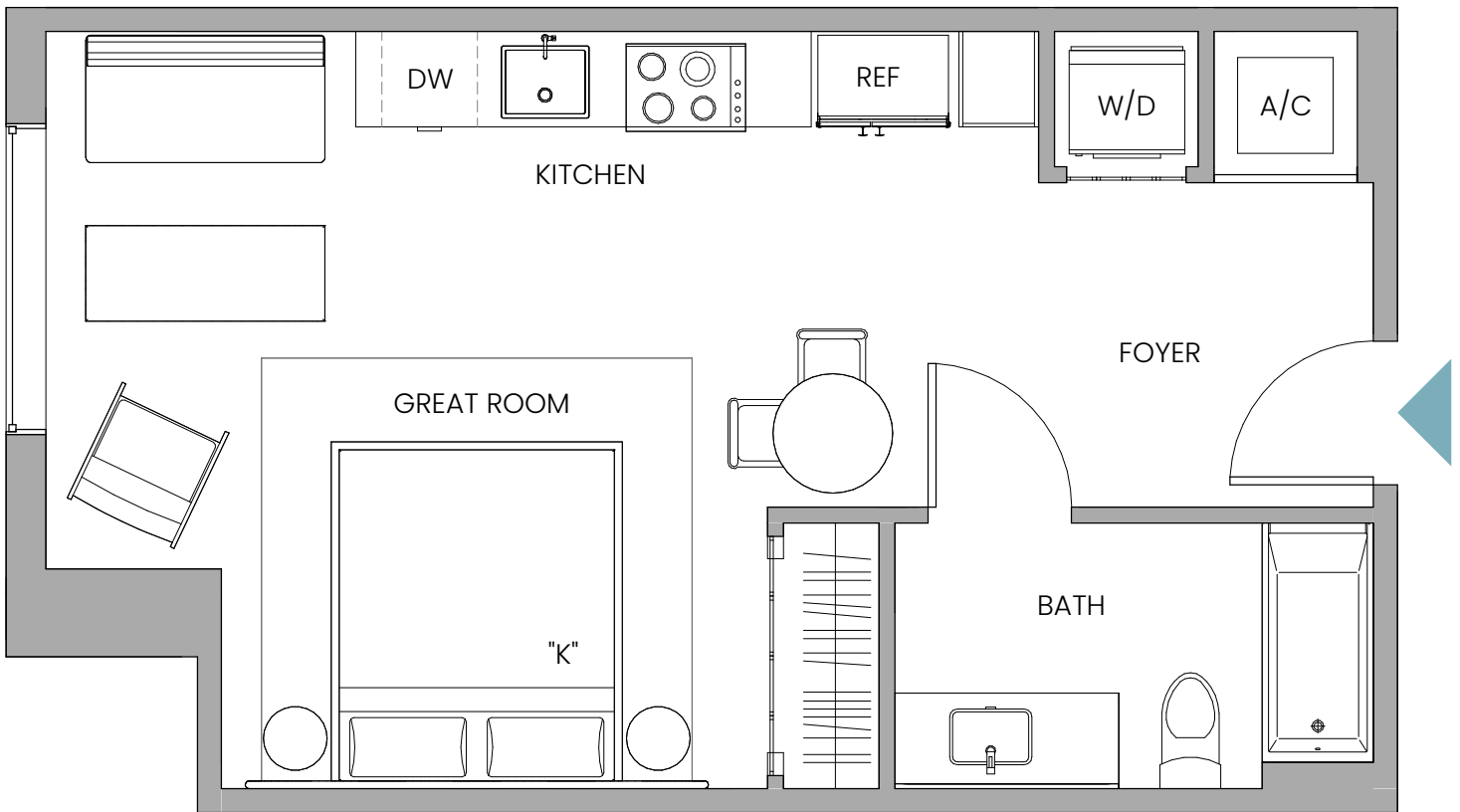
Stated dimensions are measured to the exterior boundaries of the exterior walls and the centerline of interior demising walls and in fact vary from the dimensions that would be determined by using the description and definition of the "Unit" set forth in the Declaration (which generally only includes the interior airspace between the perimeter walls and includes interior structural components). For your reference, the area of the Unit, determined in accordance with those defined unit boundaries, is 629 sq ft / 58 sq m. Note that measurements of rooms set forth on this floor plan are generally taken at the greatest points of each given room (as if the room were a perfect rectangle), without regard for any cutouts. Accordingly, the area of the actual room will typically be smaller than the product obtained by multiplying the stated length times width. All dimensions are approximate and may vary with actual construction, and all floor plans and development plans are subject to change.

UNIT W6

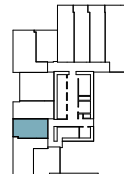
Line 09

Studio | 1 Bathroom

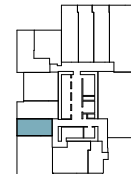
INTERIOR 457 SQ FT / 42 SQ M



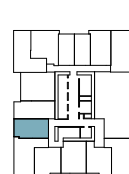
FLOORS 02



FLOORS 03-05



FLOORS 06-09



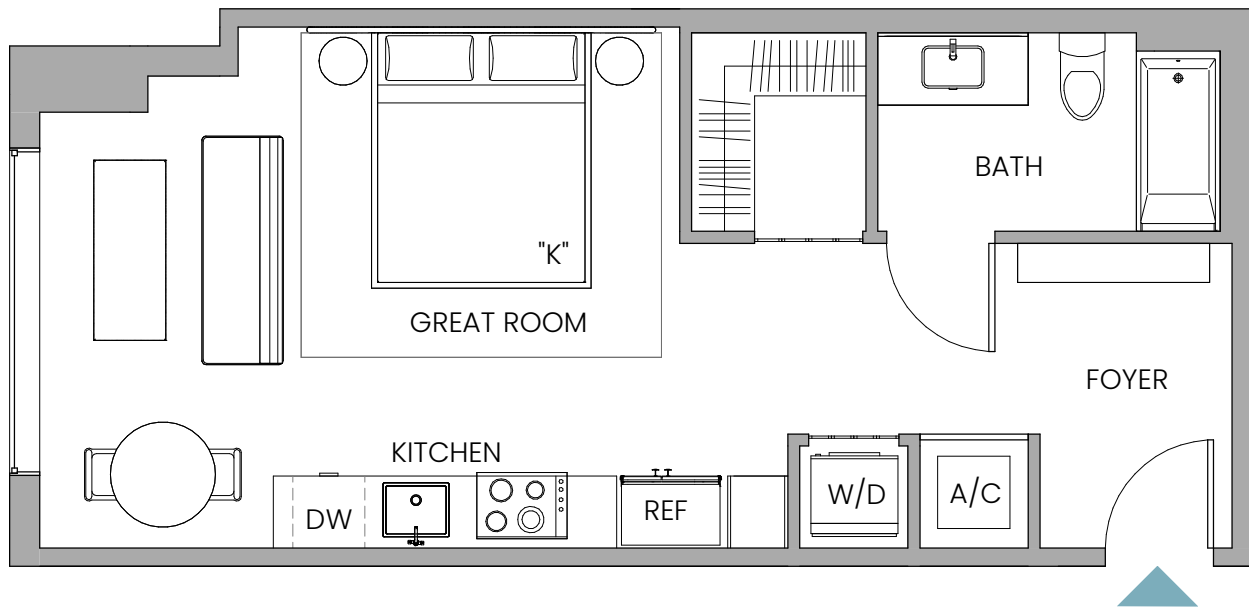
Stated dimensions are measured to the exterior boundaries of the exterior walls and the centerline of interior demising walls and in fact vary from the dimensions that would be determined by using the description and definition of the "Unit" set forth in the Declaration (which generally only includes the interior airspace between the perimeter walls and includes interior structural components). For your reference, the area of the Unit, determined in accordance with those defined unit boundaries, is 457 sq ft / 42 sq m. Note that measurements of rooms set forth on this floor plan are generally taken at the greatest points of each given room (as if the room were a perfect rectangle), without regard for any cutouts. Accordingly, the area of the actual room will typically be smaller than the product obtained by multiplying the stated length times width. All dimensions are approximate and may vary with actual construction, and all floor plans and development plans are subject to change.

UNIT W7

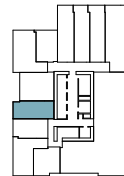
Line 08

Studio | 1 Bathroom

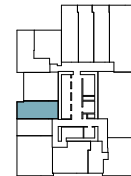
INTERIOR 509 SQ FT / 47 SQ M



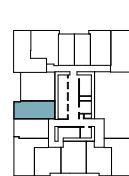
FLOORS 02



FLOORS 03-05



FLOORS 06-09

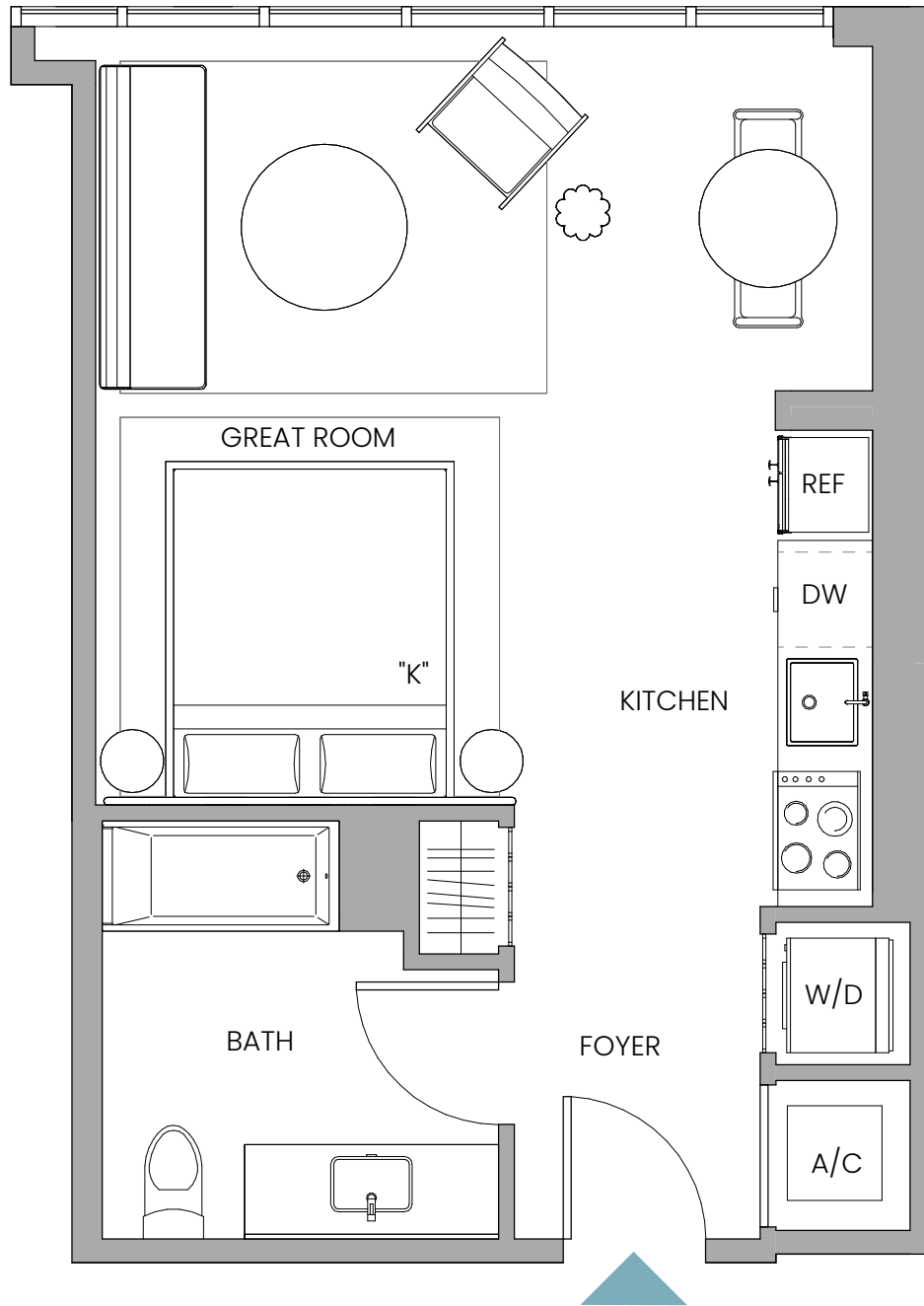


Stated dimensions are measured to the exterior boundaries of the exterior walls and the centerline of interior demising walls and in fact vary from the dimensions that would be determined by using the description and definition of the "Unit" set forth in the Declaration (which generally only includes the interior airspace between the perimeter walls and includes interior structural components). For your reference, the area of the Unit, determined in accordance with those defined unit boundaries, is 509 sq ft / 47 sq m. Note that measurements of rooms set forth on this floor plan are generally taken at the greatest points of each given room (as if the room were a perfect rectangle), without regard for any cutouts. Accordingly, the area of the actual room will typically be smaller than the product obtained by multiplying the stated length times width. All dimensions are approximate and may vary with actual construction, and all floor plans and development plans are subject to change.

UNIT W10

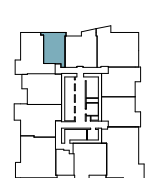
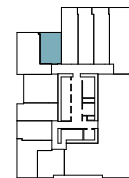
Line 05, Floors 02
Line 04, Floors 16-41

Studio | 1 Bathroom
INTERIOR 464 SF / 43 SM



FLOORS 02

FLOORS 16-41

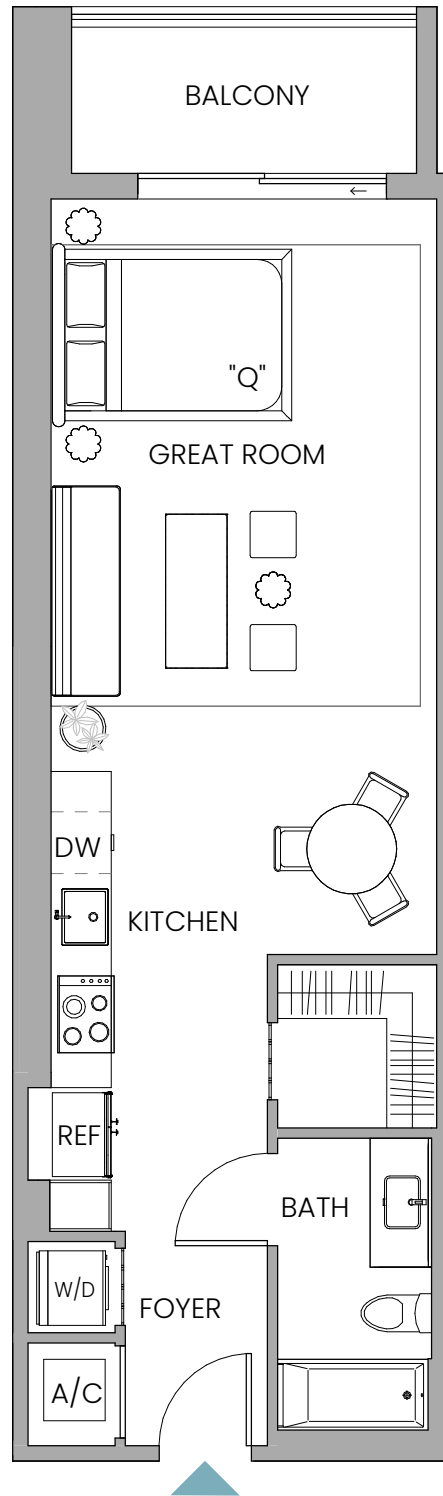


Stated dimensions are measured to the exterior boundaries of the exterior walls and the centerline of interior demising walls and in fact vary from the dimensions that would be determined by using the description and definition of the "Unit" set forth in the Declaration (which generally only includes the interior airspace between the perimeter walls and includes interior structural components). For your reference, the area of the Unit, determined in accordance with those defined unit boundaries, is 464 sq ft / 43 sq m. Note that measurements of rooms set forth on this floor plan are generally taken at the greatest points of each given room (as if the room were a perfect rectangle), without regard for any cutouts. Accordingly, the area of the actual room will typically be smaller than the product obtained by multiplying the stated length times width. All dimensions are approximate and may vary with actual construction, and all floor plans and development plans are subject to change.

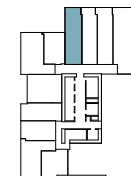
UNIT W11

Line 04

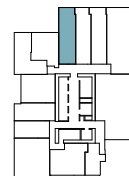
Studio | 1 Bathroom
INTERIOR 580 SQ FT / 54 SQ M
EXTERIOR 72 SQ FT / 7 SQ M
TOTAL 652 SF / 61 SM



FLOORS 02



FLOORS 03-05



Stated dimensions are measured to the exterior boundaries of the exterior walls and the centerline of interior demising walls and in fact vary from the dimensions that would be determined by using the description and definition of the "Unit" set forth in the Declaration (which generally only includes the interior airspace between the perimeter walls and includes interior structural components). For your reference, the area of the Unit, determined in accordance with those defined unit boundaries, is 580 sq ft / 54 sq m. Note that measurements of rooms set forth on this floor plan are generally taken at the greatest points of each given room (as if the room were a perfect rectangle), without regard for any cutouts. Accordingly, the area of the actual room will typically be smaller than the product obtained by multiplying the stated length times width. All dimensions are approximate and may vary with actual construction, and all floor plans and development plans are subject to change.

UNIT W12

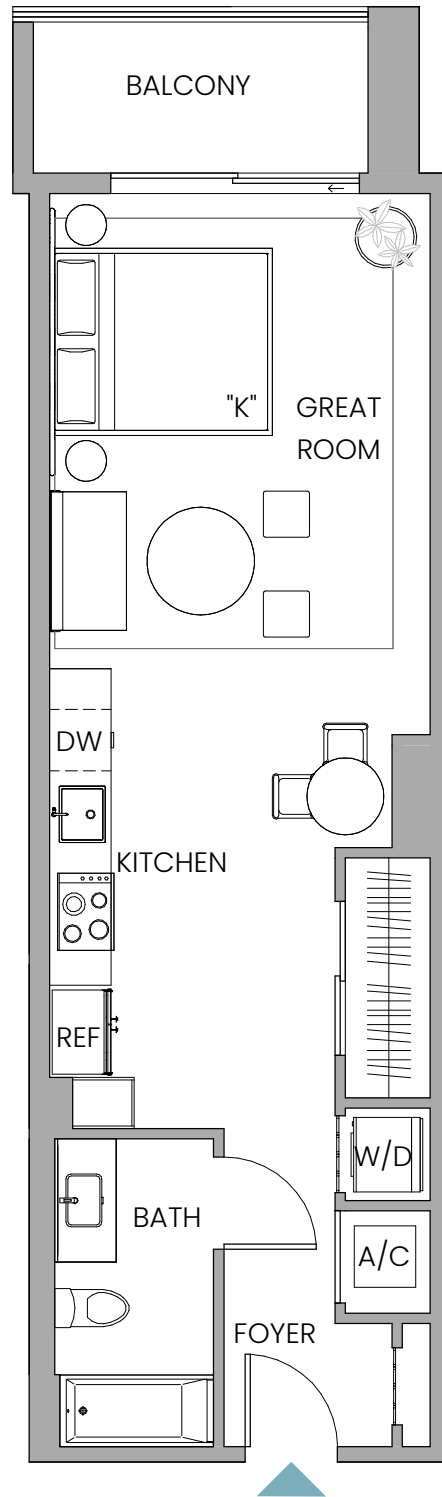
Line 03

Studio | 1 Bathroom

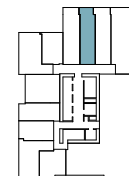
INTERIOR 538 SQ FT / 50 SQ M

EXTERIOR 66 SQ FT / 6 SM

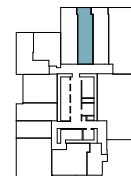
TOTAL 604 SQ FT / 56 SM



FLOORS 02



FLOORS 03-05



Stated dimensions are measured to the exterior boundaries of the exterior walls and the centerline of interior demising walls and in fact vary from the dimensions that would be determined by using the description and definition of the "Unit" set forth in the Declaration (which generally only includes the interior airspace between the perimeter walls and includes interior structural components). For your reference, the area of the Unit, determined in accordance with those defined unit boundaries, is 538 sq ft / 50 sq m. Note that measurements of rooms set forth on this floor plan are generally taken at the greatest points of each given room (as if the room were a perfect rectangle), without regard for any cutouts. Accordingly, the area of the actual room will typically be smaller than the product obtained by multiplying the stated length times width. All dimensions are approximate and may vary with actual construction, and all floor plans and development plans are subject to change.

UNIT W13

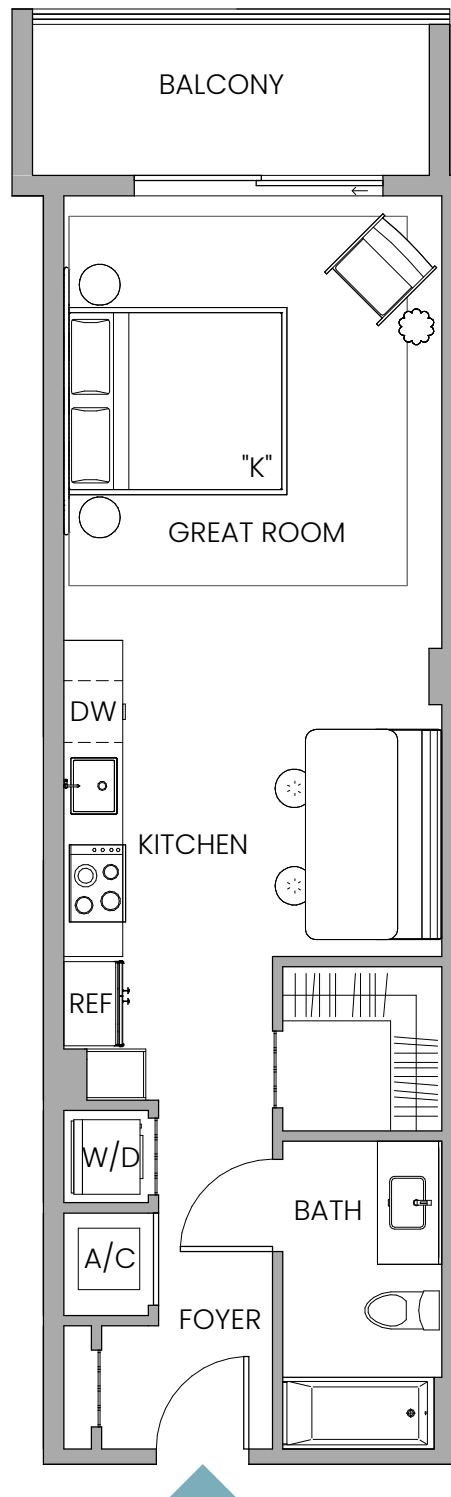
Line 02

Studio | 1 Bathroom

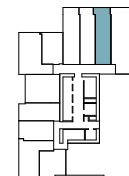
INTERIOR 536 SQ FT / 50 SQ M

EXTERIOR 76 SQ FT / 7 SQ M

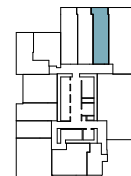
TOTAL 612 SQ FT / 57 SQ M



FLOORS 02



FLOORS 03-05



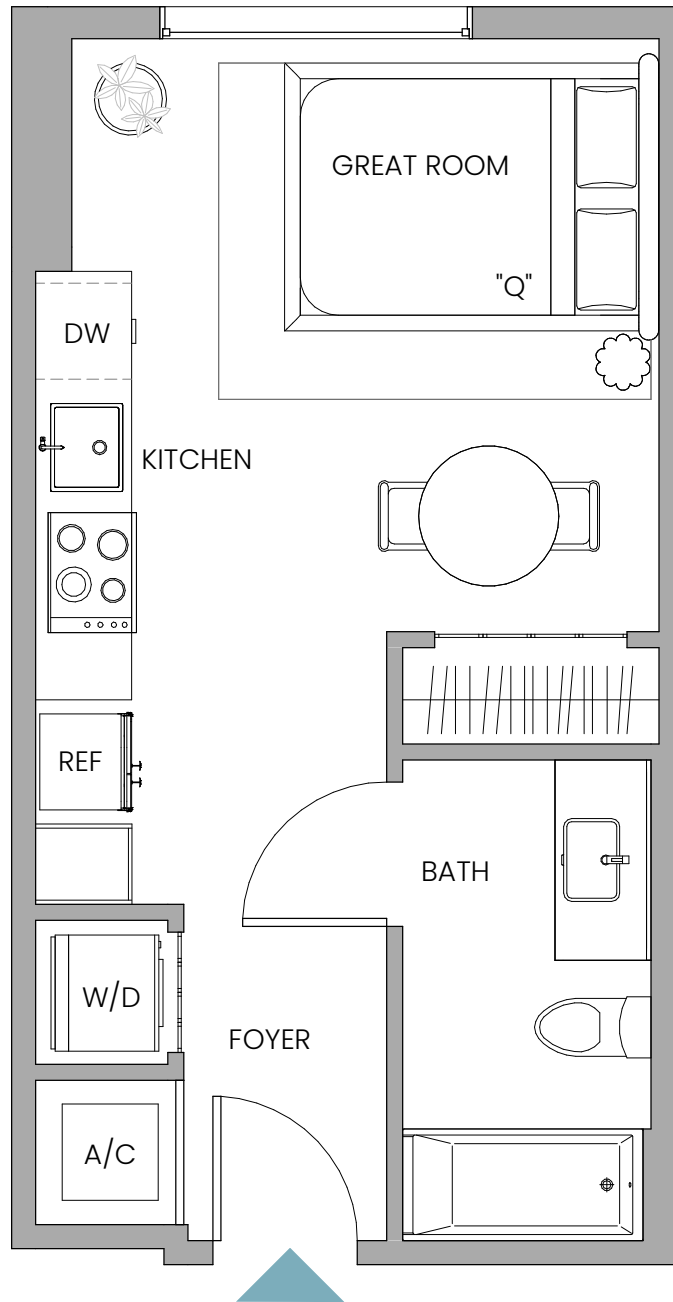
Stated dimensions are measured to the exterior boundaries of the exterior walls and the centerline of interior demising walls and in fact vary from the dimensions that would be determined by using the description and definition of the "Unit" set forth in the Declaration (which generally only includes the interior airspace between the perimeter walls and includes interior structural components). For your reference, the area of the Unit, determined in accordance with those defined unit boundaries, is 536 sq ft / 50 sq m. Note that measurements of rooms set forth on this floor plan are generally taken at the greatest points of each given room (as if the room were a perfect rectangle), without regard for any cutouts. Accordingly, the area of the actual room will typically be smaller than the product obtained by multiplying the stated length times width. All dimensions are approximate and may vary with actual construction, and all floor plans and development plans are subject to change.

UNIT W15

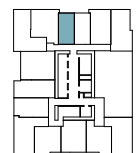
Line 04

Studio | 1 Bathroom

INTERIOR 349 SQ FT / 32 SQ M



FLOORS 06-09



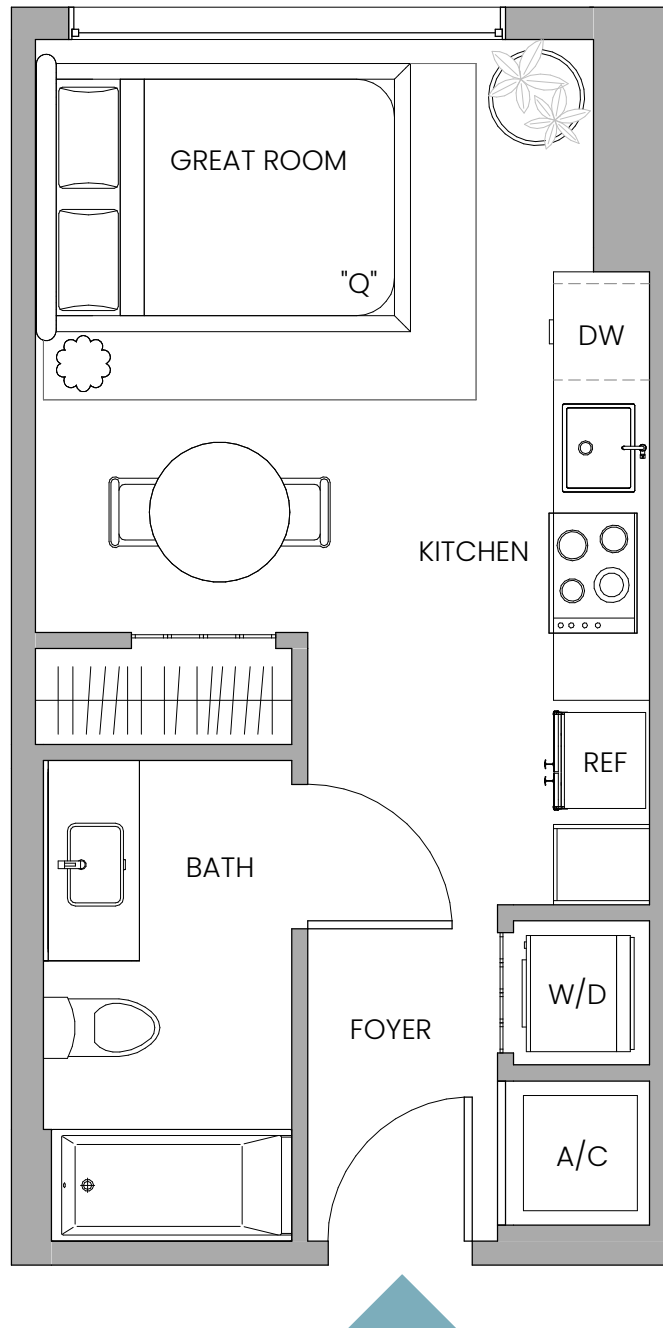
Stated dimensions are measured to the exterior boundaries of the exterior walls and the centerline of interior demising walls and in fact vary from the dimensions that would be determined by using the description and definition of the "Unit" set forth in the Declaration (which generally only includes the interior airspace between the perimeter walls and includes interior structural components). For your reference, the area of the Unit, determined in accordance with those defined unit boundaries, is 349 sq ft / 32 sq m. Note that measurements of rooms set forth on this floor plan are generally taken at the greatest points of each given room (as if the room were a perfect rectangle), without regard for any cutouts. Accordingly, the area of the actual room will typically be smaller than the product obtained by multiplying the stated length times width. All dimensions are approximate and may vary with actual construction, and all floor plans and development plans are subject to change.

UNIT W16

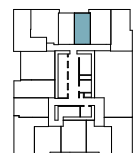
Line 03

Studio | 1 Bathroom

INTERIOR 343 SQ FT / 32 SQ M



FLOORS 06-09



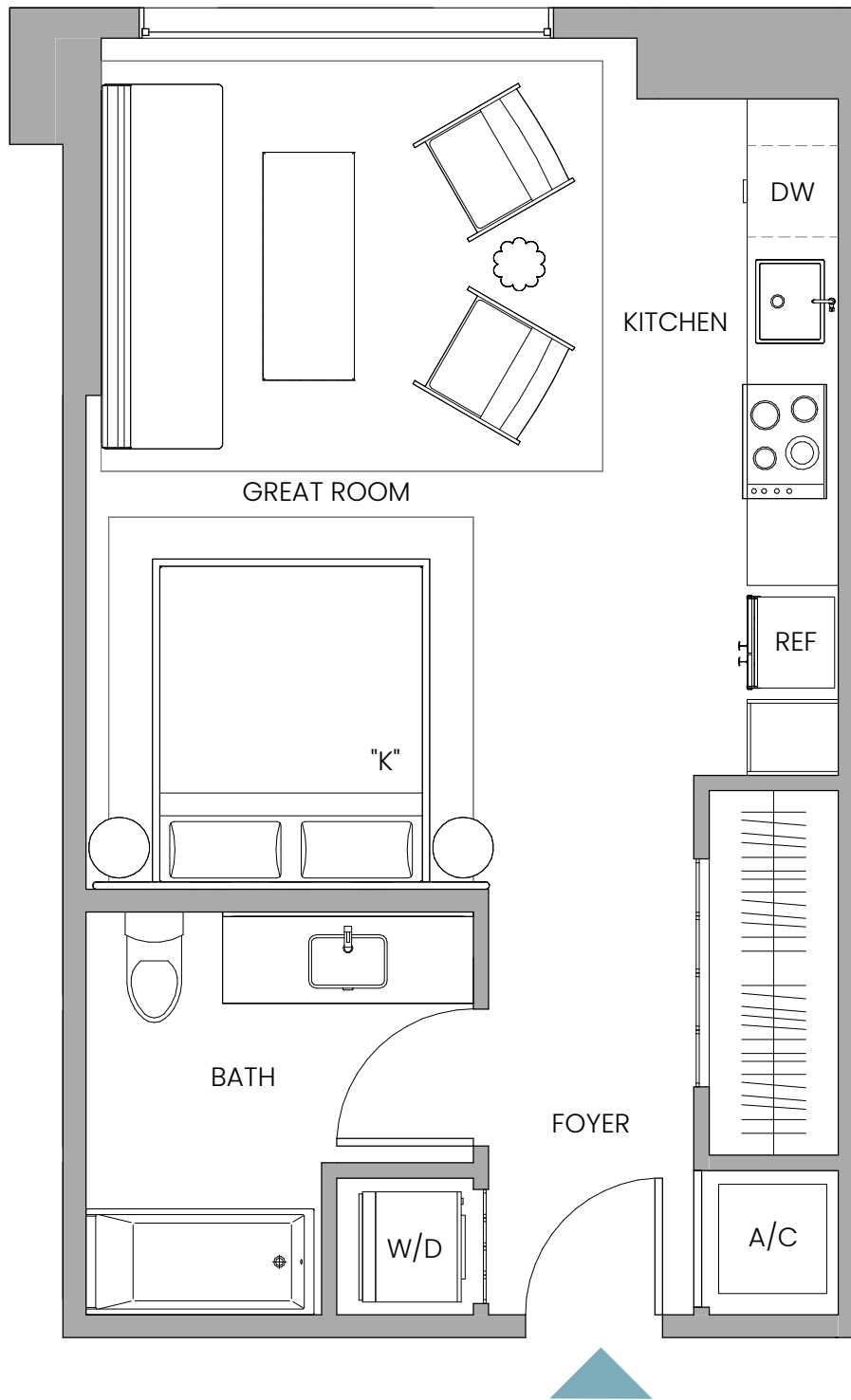
Stated dimensions are measured to the exterior boundaries of the exterior walls and the centerline of interior demising walls and in fact vary from the dimensions that would be determined by using the description and definition of the "Unit" set forth in the Declaration (which generally only includes the interior airspace between the perimeter walls and includes interior structural components). For your reference, the area of the Unit, determined in accordance with those defined unit boundaries, is 343 sq ft / 32 sq m. Note that measurements of rooms set forth on this floor plan are generally taken at the greatest points of each given room (as if the room were a perfect rectangle), without regard for any cutouts. Accordingly, the area of the actual room will typically be smaller than the product obtained by multiplying the stated length times width. All dimensions are approximate and may vary with actual construction, and all floor plans and development plans are subject to change.

UNIT W17

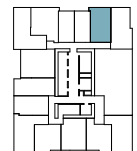
Line 02

Studio | 1 Bathroom

INTERIOR 496 SQ FT / 46 SQ M



FLOORS 06-09



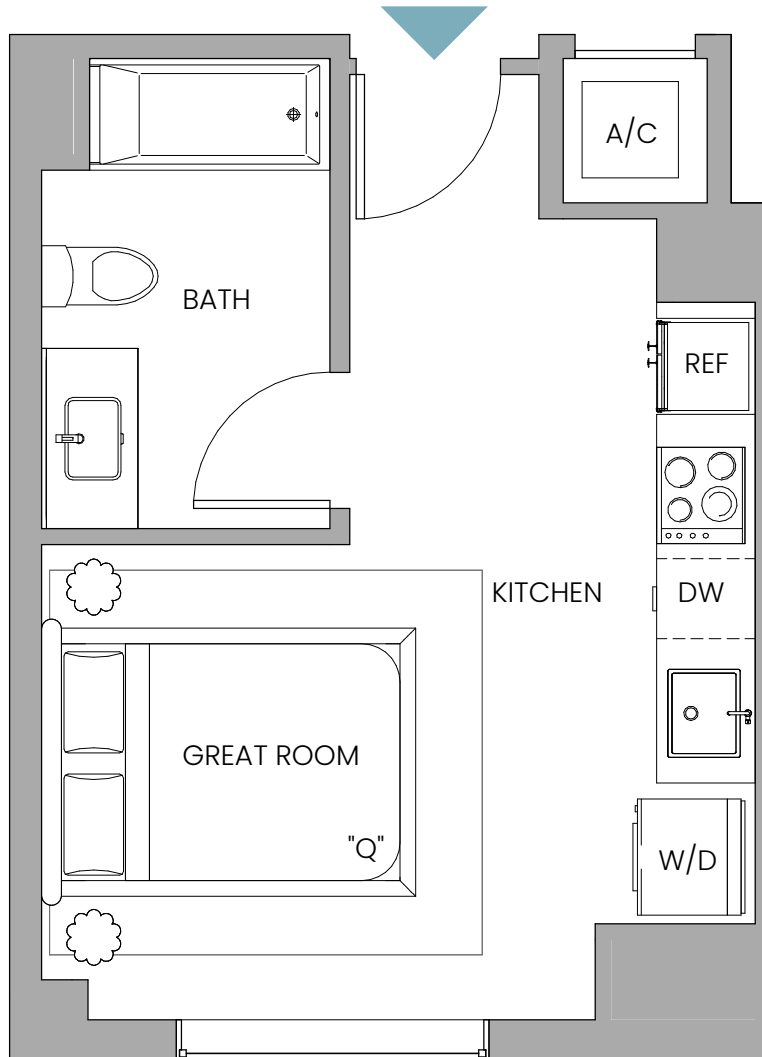
Stated dimensions are measured to the exterior boundaries of the exterior walls and the centerline of interior demising walls and in fact vary from the dimensions that would be determined by using the description and definition of the "Unit" set forth in the Declaration (which generally only includes the interior airspace between the perimeter walls and includes interior structural components). For your reference, the area of the Unit, determined in accordance with those defined unit boundaries, is 496 sq ft / 46 sq m. Note that measurements of rooms set forth on this floor plan are generally taken at the greatest points of each given room (as if the room were a perfect rectangle), without regard for any cutouts. Accordingly, the area of the actual room will typically be smaller than the product obtained by multiplying the stated length times width. All dimensions are approximate and may vary with actual construction, and all floor plans and development plans are subject to change.

UNIT W19

Line 09

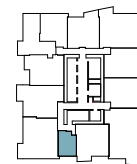
Studio | 1 Bathroom

INTERIOR 340 SQ FT / 32 SQ M



FLOORS 11-15

FLOORS 16-41



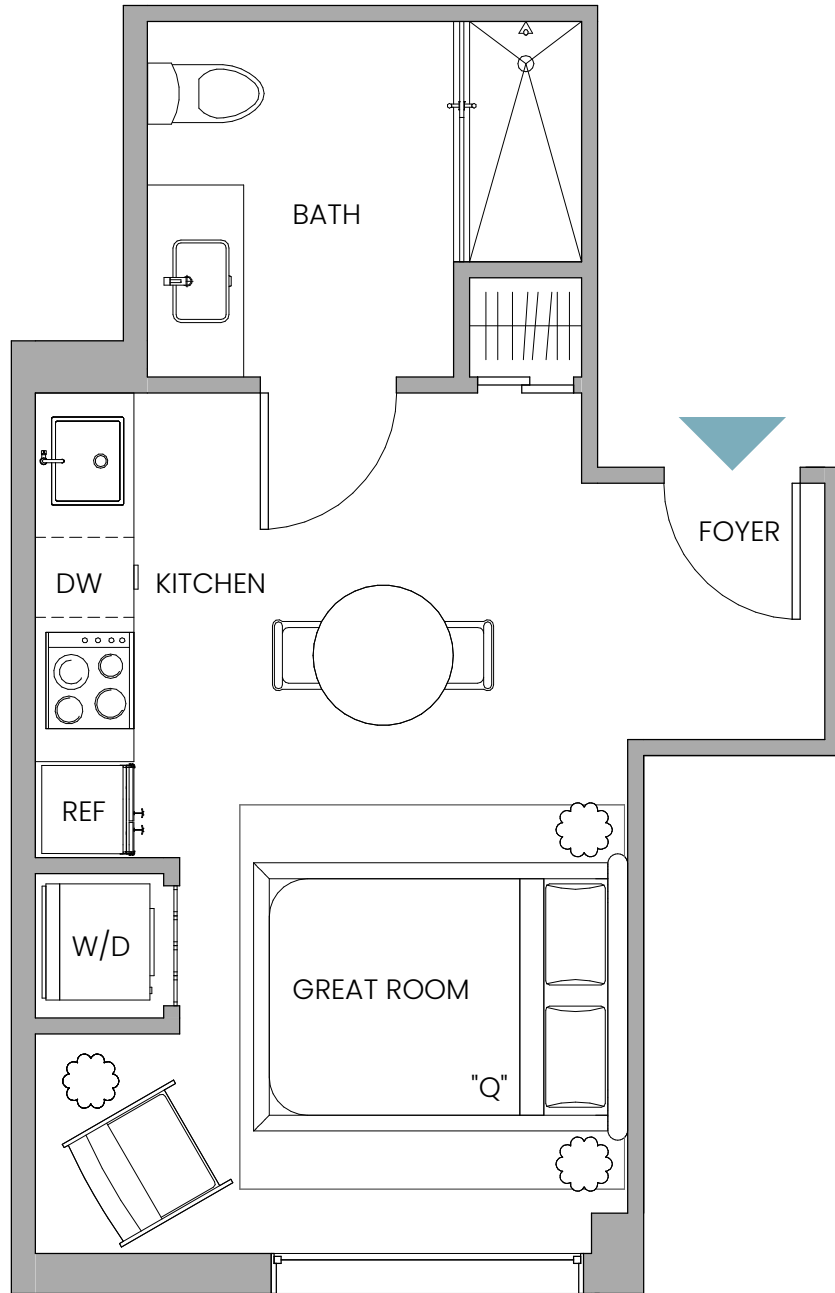
Stated dimensions are measured to the exterior boundaries of the exterior walls and the centerline of interior demising walls and in fact vary from the dimensions that would be determined by using the description and definition of the "Unit" set forth in the Declaration (which generally only includes the interior airspace between the perimeter walls and includes interior structural components). For your reference, the area of the Unit, determined in accordance with those defined unit boundaries, is 340 sq ft / 32 sq m. Note that measurements of rooms set forth on this floor plan are generally taken at the greatest points of each given room (as if the room were a perfect rectangle), without regard for any cutouts. Accordingly, the area of the actual room will typically be smaller than the product obtained by multiplying the stated length times width. All dimensions are approximate and may vary with actual construction, and all floor plans and development plans are subject to change.

UNIT W21

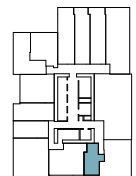
Line 12

Studio | 1 Bathroom

INTERIOR 339 SQ FT / 31 SQ M



FLOORS 03-05



Stated dimensions are measured to the exterior boundaries of the exterior walls and the centerline of interior demising walls and in fact vary from the dimensions that would be determined by using the description and definition of the "Unit" set forth in the Declaration (which generally only includes the interior airspace between the perimeter walls and includes interior structural components). For your reference, the area of the Unit, determined in accordance with those defined unit boundaries, is 339 sq ft / 31 sq m. Note that measurements of rooms set forth on this floor plan are generally taken at the greatest points of each given room (as if the room were a perfect rectangle), without regard for any cutouts. Accordingly, the area of the actual room will typically be smaller than the product obtained by multiplying the stated length times width. All dimensions are approximate and may vary with actual construction, and all floor plans and development plans are subject to change.