

E15

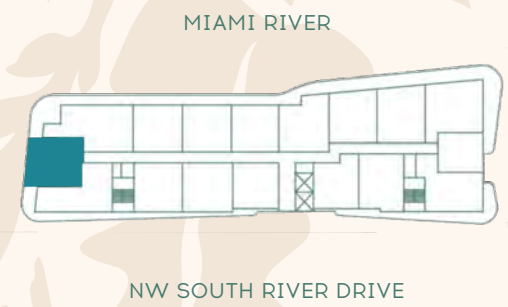
1 BEDROOM **1** BATH


UNIT 15
FLOORS 06 - 11

INTERIOR
610 SQ FT | 56 SQ M

EXTERIOR
212 SQ FT | 20 SQ M

TOTAL
822 SQ FT | 76 SQ M



 Vista Harbor Residences (the "Condominium") is developed by 555 Alta Development LLC ("Developer") and you should rely only on the Developer's written representations. The illustrations and images are conceptual and may vary from concept to actual construction. The images are examples and do not reflect the design or décor of the completed Condominium. The floor plan, unit layout, locations of windows, doors, closets, plumbing fixtures, mechanical equipment, appliances, structural elements, architectural design elements, views, and the uses, configurations, and entries to rooms may change based on final approved plans, permitting, and completed construction. The furniture plan and the uses of space illustrated are suggested uses only and not intended to guaranty or represent any specific use of space. Furnishings, design features, and décor illustrated are not included with purchase of a Unit. Certain amenities and features may require additional expense by Unit owner. There are water views, but the Condominium is not waterfront and views will vary depending on the Unit purchased. No view, water or otherwise, is guaranteed. Consult only the Developer's Prospectus for the Condominium to learn terms, conditions, specifications, estimated costs, Unit views, and to learn what is included with a Unit purchase and how to calculate the Unit size. The balconies depicted are conceptual and the size will vary based on final permitting and completed construction. Pursuant to a license agreement, Developer has the right to use the trade names, marks, images, and logos of Alta Development LLC for so long as the license agreement is not terminated or otherwise lapses. Developer is not incorporated in, located in, nor a resident of New York and this is not intended to be an offer to sell, or solicitation of an offer to buy, condominium units in New York or to residents of New York, or residents of any other jurisdiction were prohibited by law. Reproduction for any use is not authorized. 2026 555 Alta Development, LLC. Artist's renderings of development; excludes images of surrounding and neighboring buildings.

E18

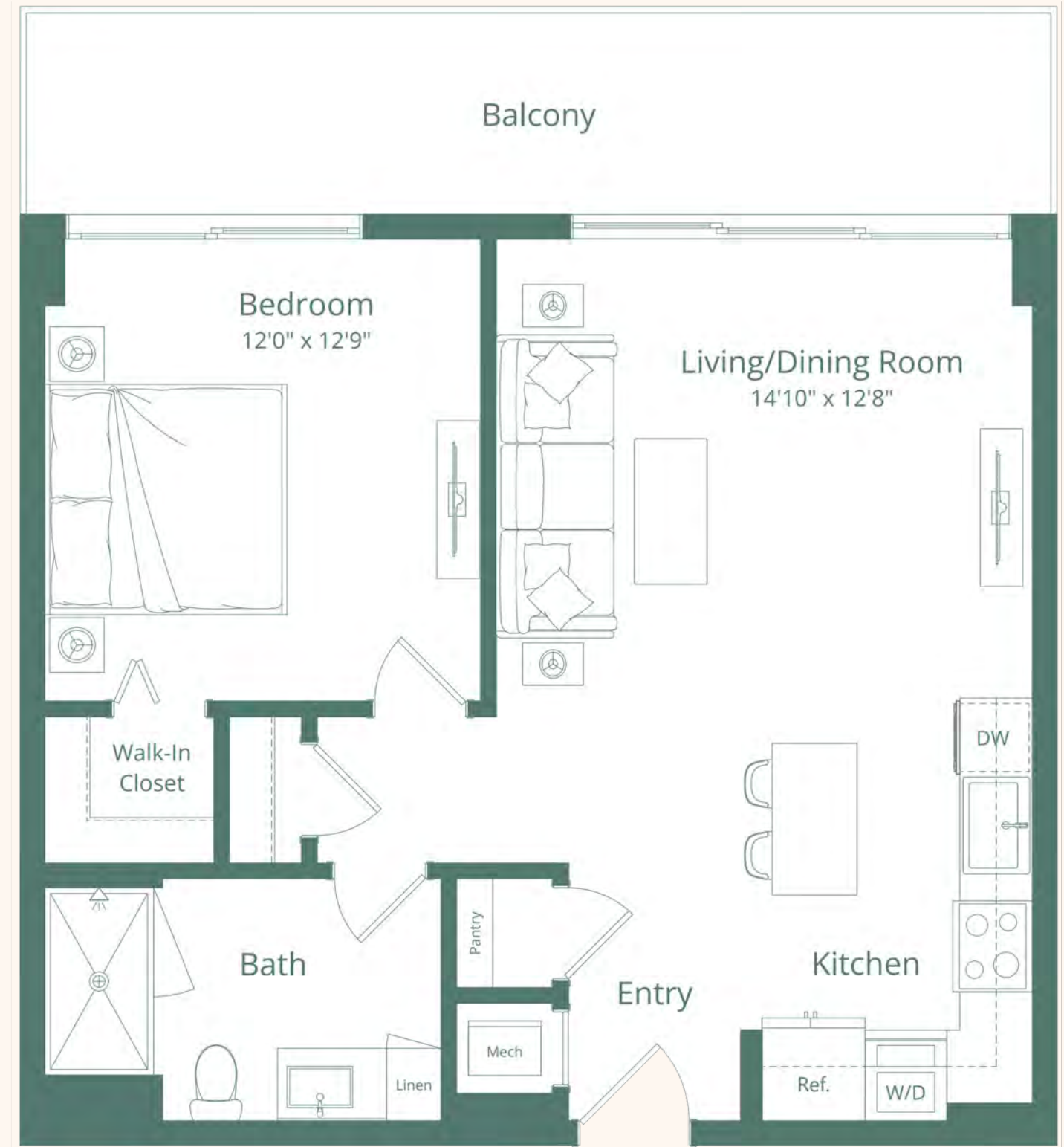
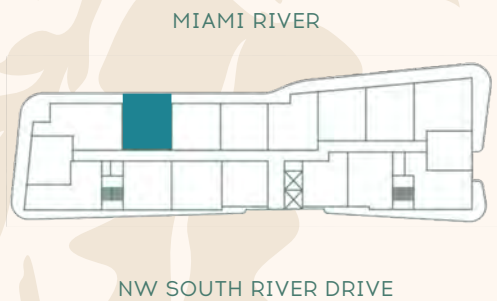
1 BEDROOM **1** BATH

UNIT 18
FLOORS 05 - 11

INTERIOR
713 SQ FT | 66 SQ M

EXTERIOR
158 SQ FT | 14 SQ M

TOTAL
871 SQ FT | 80 SQ M



Vista Harbor Residences (the "Condominium") is developed by 555 Alta Development LLC ("Developer") and you should rely only on the Developer's written representations. The illustrations and images are conceptual and may vary from concept to actual construction. The images are examples and do not reflect the design or décor of the completed Condominium. The floor plan, unit layout, locations of windows, doors, closets, plumbing fixtures, mechanical equipment, appliances, structural elements, architectural design elements, views, and the uses, configurations, and entries to rooms may change based on final approved plans, permitting, and completed construction. The furniture plan and the uses of space illustrated are suggested uses only and not intended to guaranty or represent any specific use of space. Furnishings, design features, and décor illustrated are not included with purchase of a Unit. Certain amenities and features may require additional expense by Unit owner. There are water views, but the Condominium is not waterfront and views will vary depending on the Unit purchased. No view, water or otherwise, is guaranteed. Consult only the Developer's Prospectus for the Condominium to learn terms, conditions, specifications, estimated costs, Unit views, and to learn what is included with a Unit purchase and how to calculate the Unit size. The balconies depicted are conceptual and the size will vary based on final permitting and completed construction. Pursuant to a license agreement, Developer has the right to use the trade names, marks, images, and logos of Alta Development LLC for so long as the license agreement is not terminated or otherwise lapses. Developer is not incorporated in, located in, nor a resident of New York and this is not intended to be an offer to sell, or solicitation of an offer to buy, condominium units in New York or to residents of New York, or residents of any other jurisdiction were prohibited by law. Reproduction for any use is not authorized. 2026 555 Alta Development, LLC. Artist's renderings of development; excludes images of surrounding and neighboring buildings.

E19

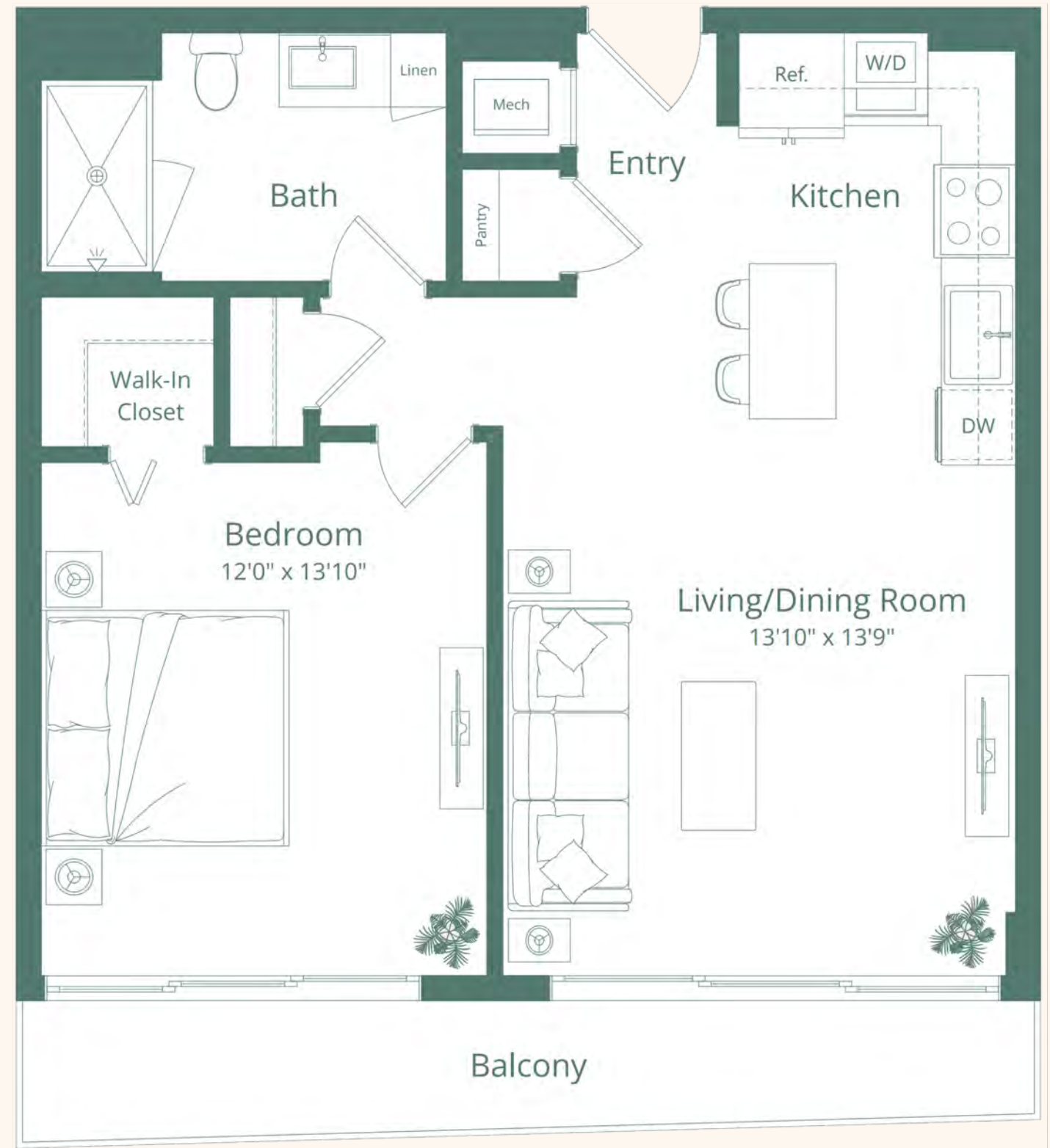
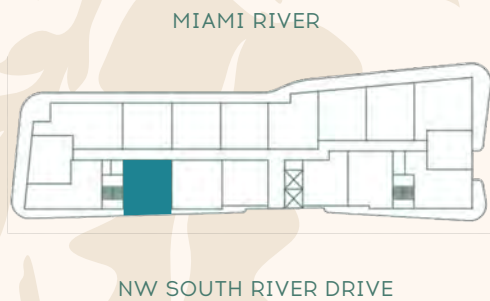
1 BEDROOM **1** BATH

UNIT 19
FLOORS 05 - 11

INTERIOR
724 SQ FT | 67 SQ M

EXTERIOR
100 SQ FT | 9 SQ M

TOTAL
824 SQ FT | 76 SQ M



Vista Harbor Residences (the "Condominium") is developed by 555 Alta Development LLC ("Developer") and you should rely only on the Developer's written representations. The illustrations and images are conceptual and may vary from concept to actual construction. The images are examples and do not reflect the design or décor of the completed Condominium. The floor plan, unit layout, locations of windows, doors, closets, plumbing fixtures, mechanical equipment, appliances, structural elements, architectural design elements, views, and the uses, configurations, and entries to rooms may change based on final approved plans, permitting, and completed construction. The furniture plan and the uses of space illustrated are suggested uses only and not intended to guaranty or represent any specific use of space. Furnishings, design features, and décor illustrated are not included with purchase of a Unit. Certain amenities and features may require additional expense by Unit owner. There are water views, but the Condominium is not waterfront and views will vary depending on the Unit purchased. No view, water or otherwise, is guaranteed. Consult only the Developer's Prospectus for the Condominium to learn terms, conditions, specifications, estimated costs, Unit views, and to learn what is included with a Unit purchase and how to calculate the Unit size. The balconies depicted are conceptual and the size will vary based on final permitting and completed construction. Pursuant to a license agreement, Developer has the right to use the trade names, marks, images, and logos of Alta Development LLC for so long as the license agreement is not terminated or otherwise lapses. Developer is not incorporated in, located in, nor a resident of New York and this is not intended to be an offer to sell, or solicitation of an offer to buy, condominium units in New York or to residents of New York, or residents of any other jurisdiction were prohibited by law. Reproduction for any use is not authorized. 2026 555 Alta Development, LLC. Artist's renderings of development; excludes images of surrounding and neighboring buildings.

E20

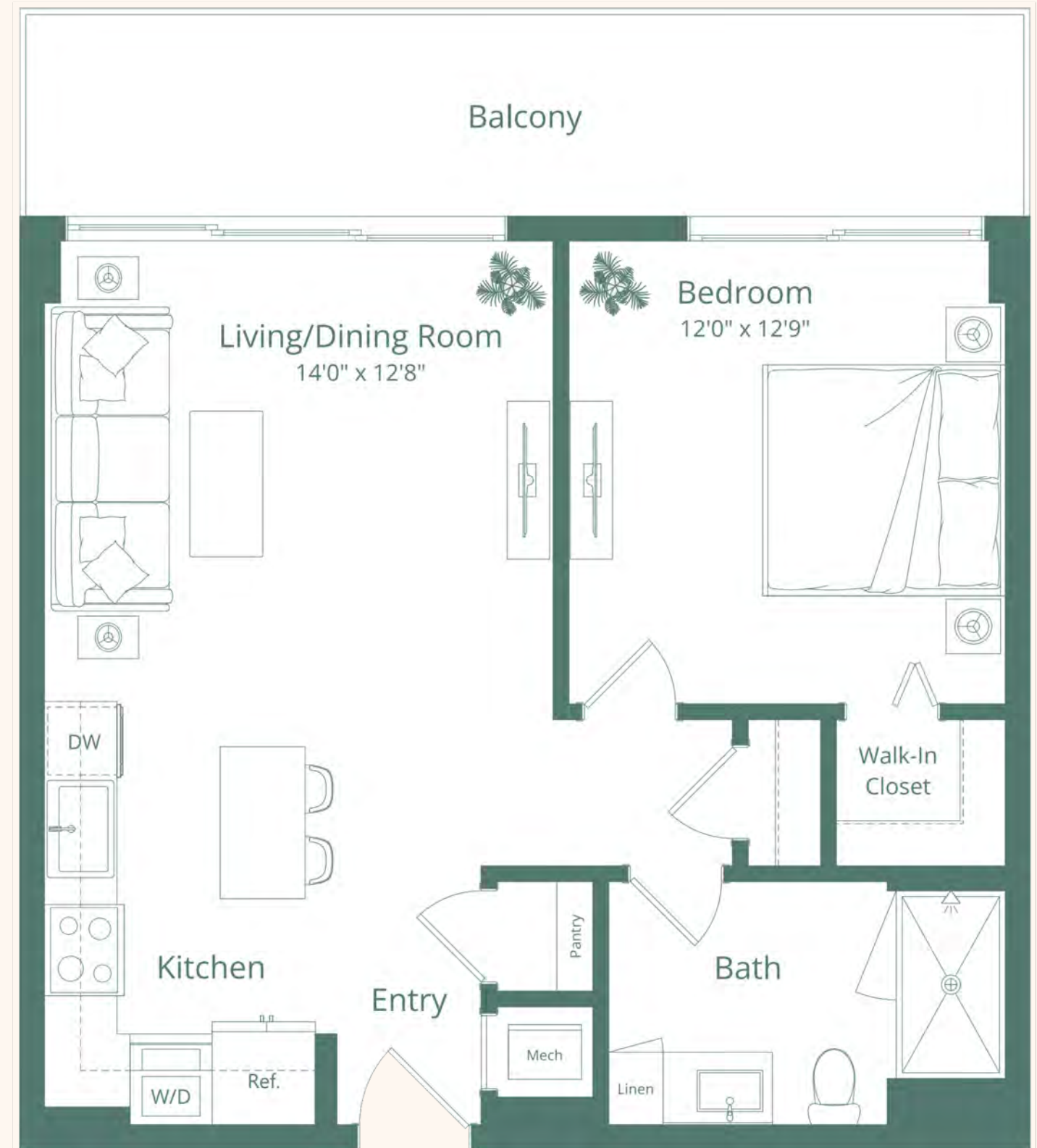
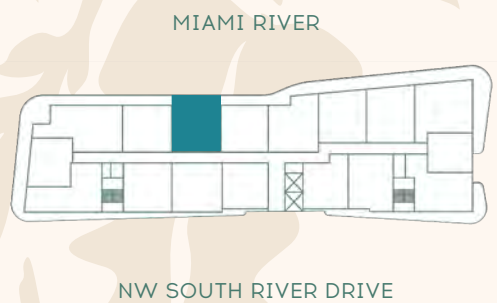
1 BEDROOM **1** BATH

UNIT 20
FLOORS 05 - 11

INTERIOR
692 SQ FT | **64** SQ M

EXTERIOR
154 SQ FT | **14** SQ M

TOTAL
846 SQ FT | **78** SQ M



Vista Harbor Residences (the "Condominium") is developed by 555 Alta Development LLC ("Developer") and you should rely only on the Developer's written representations. The illustrations and images are conceptual and may vary from concept to actual construction. The images are examples and do not reflect the design or décor of the completed Condominium. The floor plan, unit layout, locations of windows, doors, closets, plumbing fixtures, mechanical equipment, appliances, structural elements, architectural design elements, views, and the uses, configurations, and entries to rooms may change based on final approved plans, permitting, and completed construction. The furniture plan and the uses of space illustrated are suggested uses only and not intended to guaranty or represent any specific use of space. Furnishings, design features, and décor illustrated are not included with purchase of a Unit. Certain amenities and features may require additional expense by Unit owner. There are water views, but the Condominium is not waterfront and views will vary depending on the Unit purchased. No view, water or otherwise, is guaranteed. Consult only the Developer's Prospectus for the Condominium to learn terms, conditions, specifications, estimated costs, Unit views, and to learn what is included with a Unit purchase and how to calculate the Unit size. The balconies depicted are conceptual and the size will vary based on final permitting and completed construction. Pursuant to a license agreement, Developer has the right to use the trade names, marks, images, and logos of Alta Development LLC for so long as the license agreement is not terminated or otherwise lapses. Developer is not incorporated in, located in, nor a resident of New York and this is not intended to be an offer to sell, or solicitation of an offer to buy, condominium units in New York or to residents of New York, or residents of any other jurisdiction were prohibited by law. Reproduction for any use is not authorized. 2026 555 Alta Development, LLC. Artist's renderings of development; excludes images of surrounding and neighboring buildings.

E21

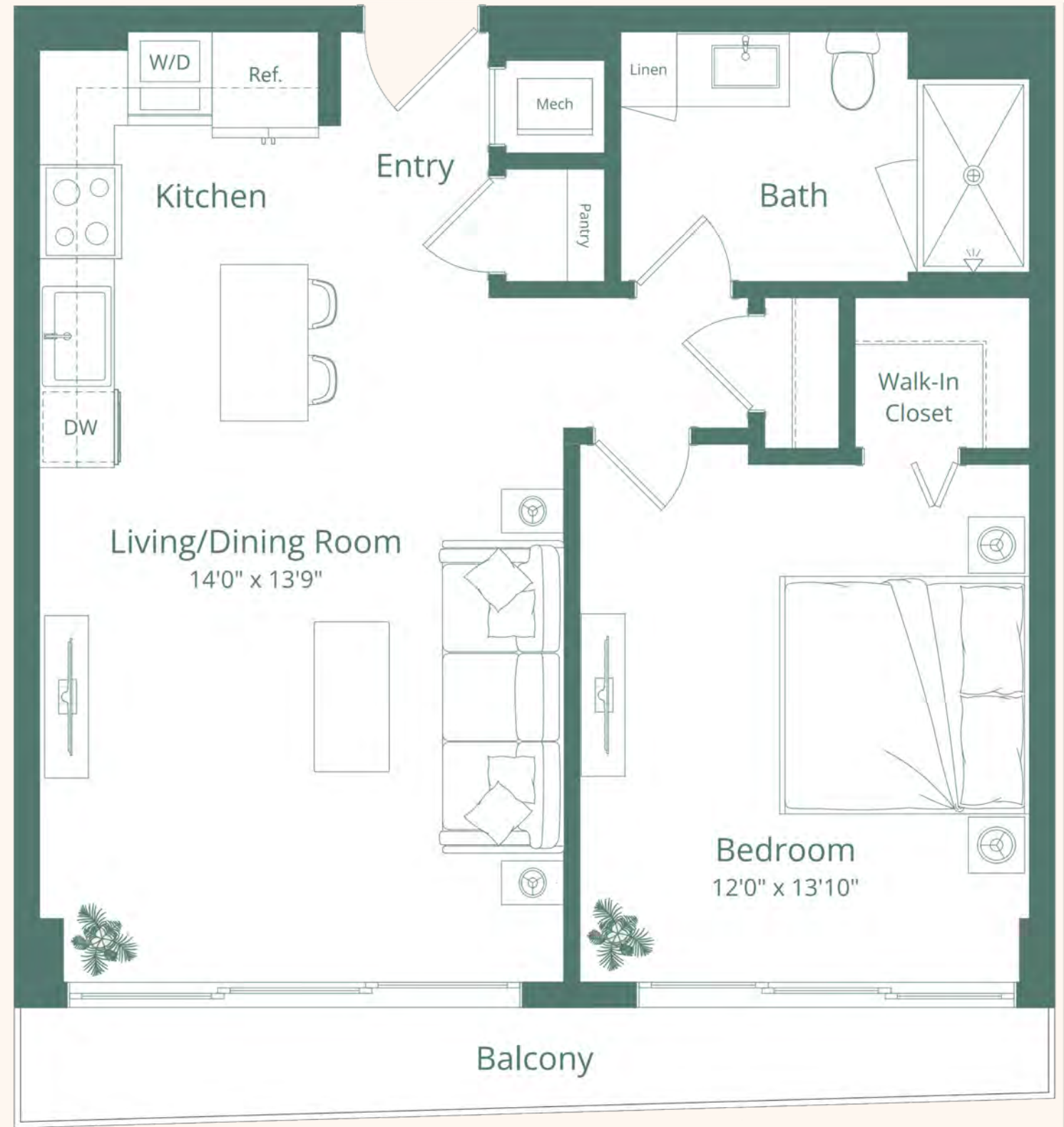
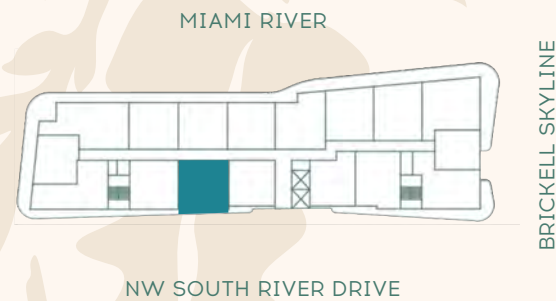
1 BEDROOM **1** BATH

UNIT 21
FLOORS 05 - 11

INTERIOR
724 SQ FT | 67 SQ M

EXTERIOR
76 SQ FT | 7 SQ M

TOTAL
800 SQ FT | 74 SQ M



Vista Harbor Residences (the "Condominium") is developed by 555 Alta Development LLC ("Developer") and you should rely only on the Developer's written representations. The illustrations and images are conceptual and may vary from concept to actual construction. The images are examples and do not reflect the design or décor of the completed Condominium. The floor plan, unit layout, locations of windows, doors, closets, plumbing fixtures, mechanical equipment, appliances, structural elements, architectural design elements, views, and the uses, configurations, and entries to rooms may change based on final approved plans, permitting, and completed construction. The furniture plan and the uses of space illustrated are suggested uses only and not intended to guaranty or represent any specific use of space. Furnishings, design features, and décor illustrated are not included with purchase of a Unit. Certain amenities and features may require additional expense by Unit owner. There are water views, but the Condominium is not waterfront and views will vary depending on the Unit purchased. No view, water or otherwise, is guaranteed. Consult only the Developer's Prospectus for the Condominium to learn terms, conditions, specifications, estimated costs, Unit views, and to learn what is included with a Unit purchase and how to calculate the Unit size. The balconies depicted are conceptual and the size will vary based on final permitting and completed construction. Pursuant to a license agreement, Developer has the right to use the trade names, marks, images, and logos of Alta Development LLC for so long as the license agreement is not terminated or otherwise lapses. Developer is not incorporated in, located in, nor a resident of New York and this is not intended to be an offer to sell, or solicitation of an offer to buy, condominium units in New York or to residents of New York, or residents of any other jurisdiction were prohibited by law. Reproduction for any use is not authorized. 2026 555 Alta Development, LLC. Artist's renderings of development; excludes images of surrounding and neighboring buildings.

E22

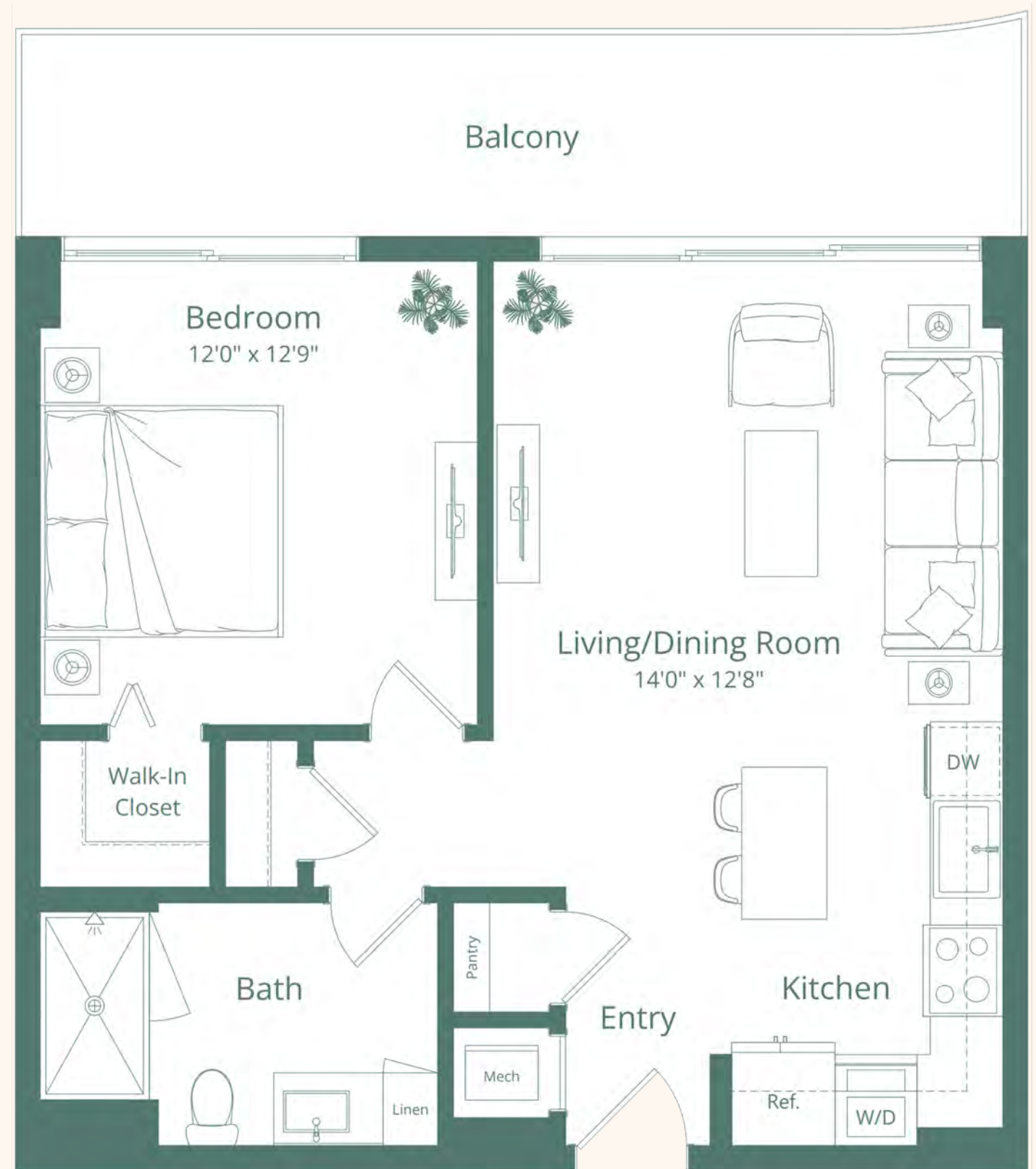
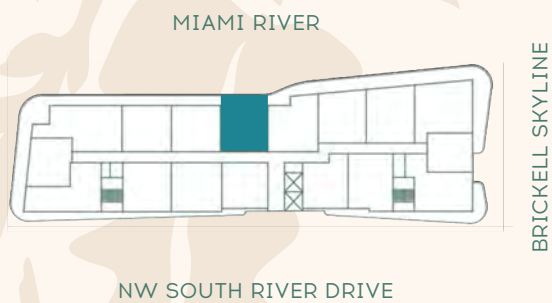
1 BEDROOM 1 BATH

UNIT 22
FLOORS 05 - 11

INTERIOR
692 SQ FT | 64 SQ M

EXTERIOR
155 SQ FT | 14 SQ M

TOTAL
847 SQ FT | 78 SQ M



Vista Harbor Residences (the "Condominium") is developed by 555 Alta Development LLC ("Developer") and you should rely only on the Developer's written representations. The illustrations and images are conceptual and may vary from concept to actual construction. The images are examples and do not reflect the design or décor of the completed Condominium. The floor plan, unit layout, locations of windows, doors, closets, plumbing fixtures, mechanical equipment, appliances, structural elements, architectural design elements, views, and the uses, configurations, and entries to rooms may change based on final approved plans, permitting, and completed construction. The furniture plan and the uses of space illustrated are suggested uses only and not intended to guaranty or represent any specific use of space. Furnishings, design features, and décor illustrated are not included with purchase of a Unit. Certain amenities and features may require additional expense by Unit owner. There are water views, but the Condominium is not waterfront and views will vary depending on the Unit purchased. No view, water or otherwise, is guaranteed. Consult only the Developer's Prospectus for the Condominium to learn terms, conditions, specifications, estimated costs, Unit views, and to learn what is included with a Unit purchase and how to calculate the Unit size. The balconies depicted are conceptual and the size will vary based on final permitting and completed construction. Pursuant to a license agreement, Developer has the right to use the trade names, marks, images, and logos of Alta Development LLC for so long as the license agreement is not terminated or otherwise lapses. Developer is not incorporated in, located in, nor a resident of New York and this is not intended to be an offer to sell, or solicitation of an offer to buy, condominium units in New York or to residents of New York, or residents of any other jurisdiction were prohibited by law. Reproduction for any use is not authorized. 2026 555 Alta Development, LLC. Artist's renderings of development; excludes images of surrounding and neighboring buildings.

E23

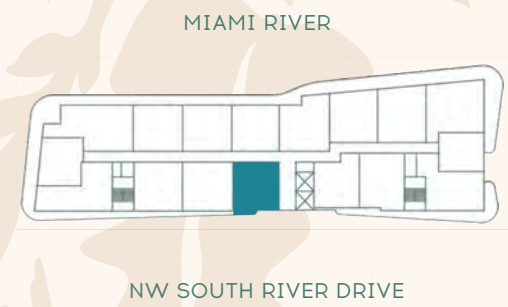
1 BEDROOM 1 BATH

UNIT 23
FLOORS 05 - 11

INTERIOR
685 SQ FT | 63 SQ M

EXTERIOR
79 SQ FT | 7 SQ M

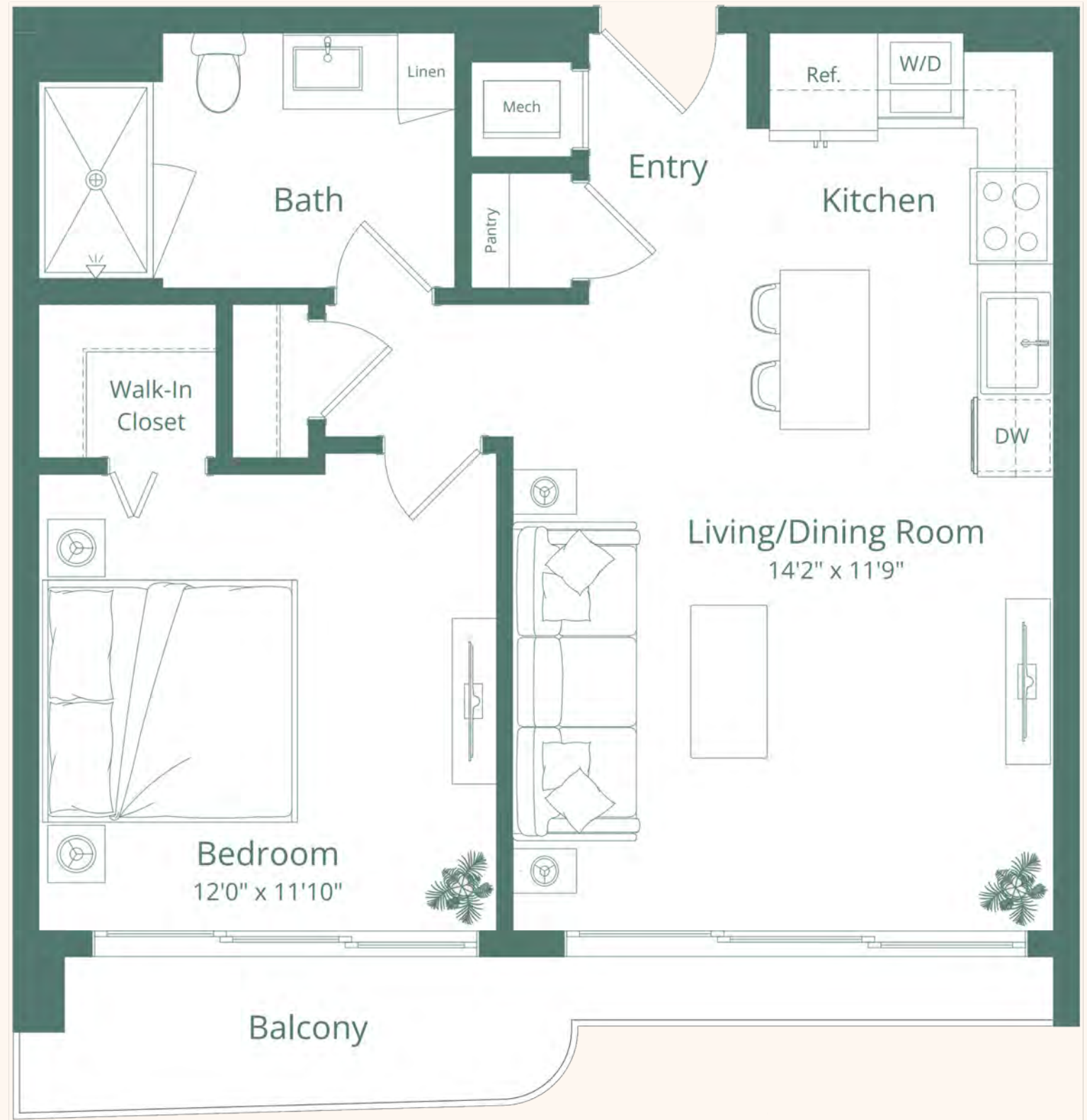
TOTAL
764 SQ FT | 70 SQ M



MIAMI RIVER

BRICKELL SKYLINE

NW SOUTH RIVER DRIVE



E25

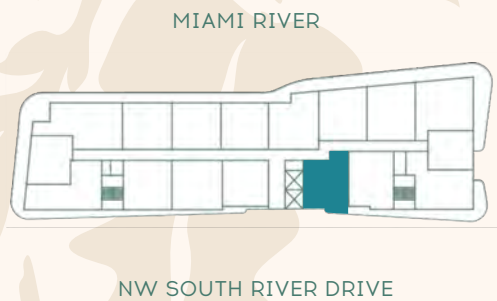
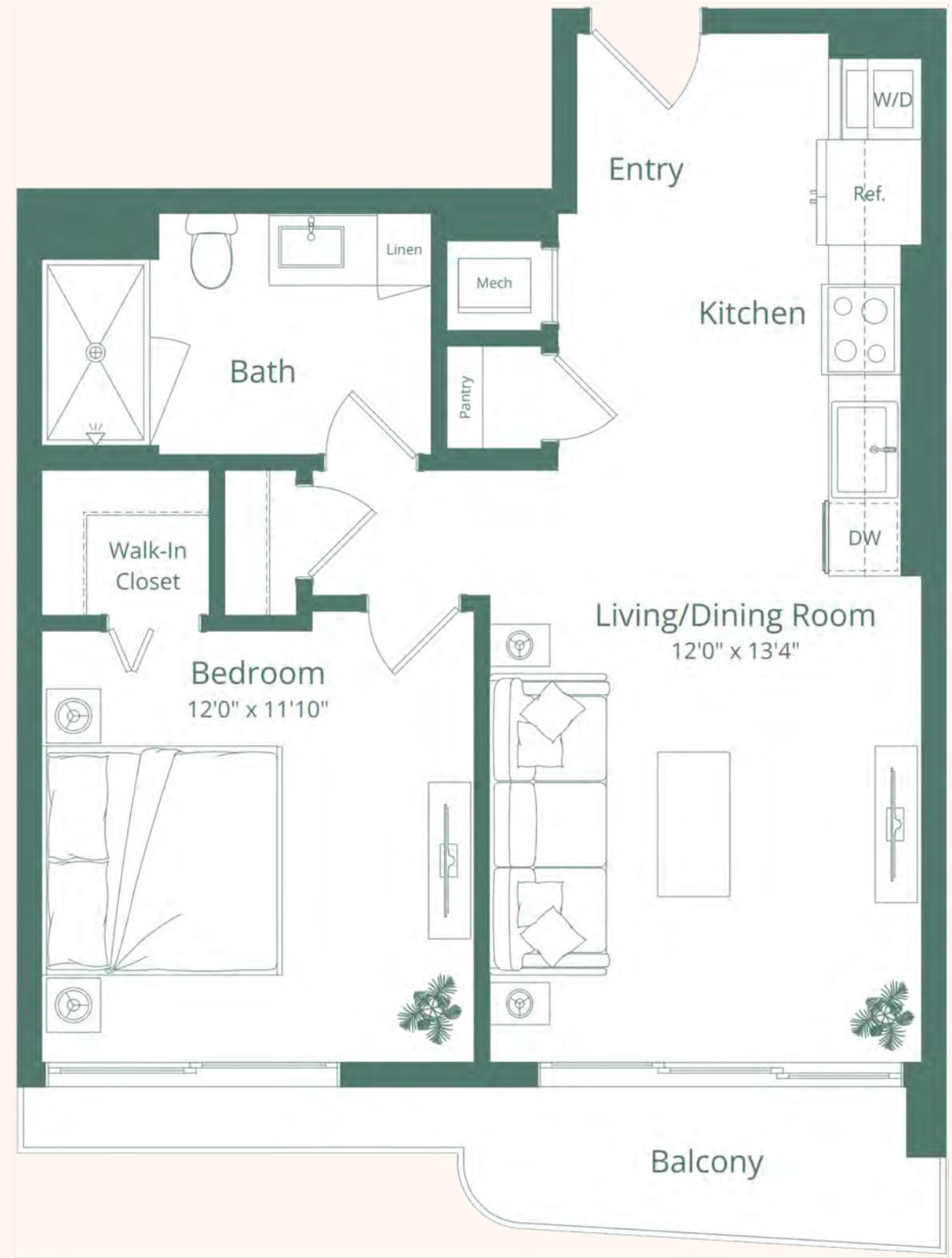
1 BEDROOM 1 BATH

UNIT 25
FLOORS 05 - 11

INTERIOR
683 SQ FT | 63 SQ M

EXTERIOR
78 SQ FT | 7 SQ M

TOTAL
761 SQ FT | 70 SQ M



Vista Harbor Residences (the "Condominium") is developed by 555 Alta Development LLC ("Developer") and you should rely only on the Developer's written representations. The illustrations and images are conceptual and may vary from concept to actual construction. The images are examples and do not reflect the design or décor of the completed Condominium. The floor plan, unit layout, locations of windows, doors, closets, plumbing fixtures, mechanical equipment, appliances, structural elements, architectural design elements, views, and the uses, configurations, and entries to rooms may change based on final approved plans, permitting, and completed construction. The furniture plan and the uses of space illustrated are suggested uses only and not intended to guaranty or represent any specific use of space. Furnishings, design features, and décor illustrated are not included with purchase of a Unit. Certain amenities and features may require additional expense by Unit owner. There are water views, but the Condominium is not waterfront and views will vary depending on the Unit purchased. No view, water or otherwise, is guaranteed. Consult only the Developer's Prospectus for the Condominium to learn terms, conditions, specifications, estimated costs, Unit views, and to learn what is included with a Unit purchase and how to calculate the Unit size. The balconies depicted are conceptual and the size will vary based on final permitting and completed construction. Pursuant to a license agreement, Developer has the right to use the trade names, marks, images, and logos of Alta Development LLC for so long as the license agreement is not terminated or otherwise lapses. Developer is not incorporated in, located in, nor a resident of New York and this is not intended to be an offer to sell, or solicitation of an offer to buy, condominium units in New York or to residents of New York, or residents of any other jurisdiction were prohibited by law. Reproduction for any use is not authorized. 2026 555 Alta Development, LLC. Artist's renderings of development; excludes images of surrounding and neighboring buildings.

E27

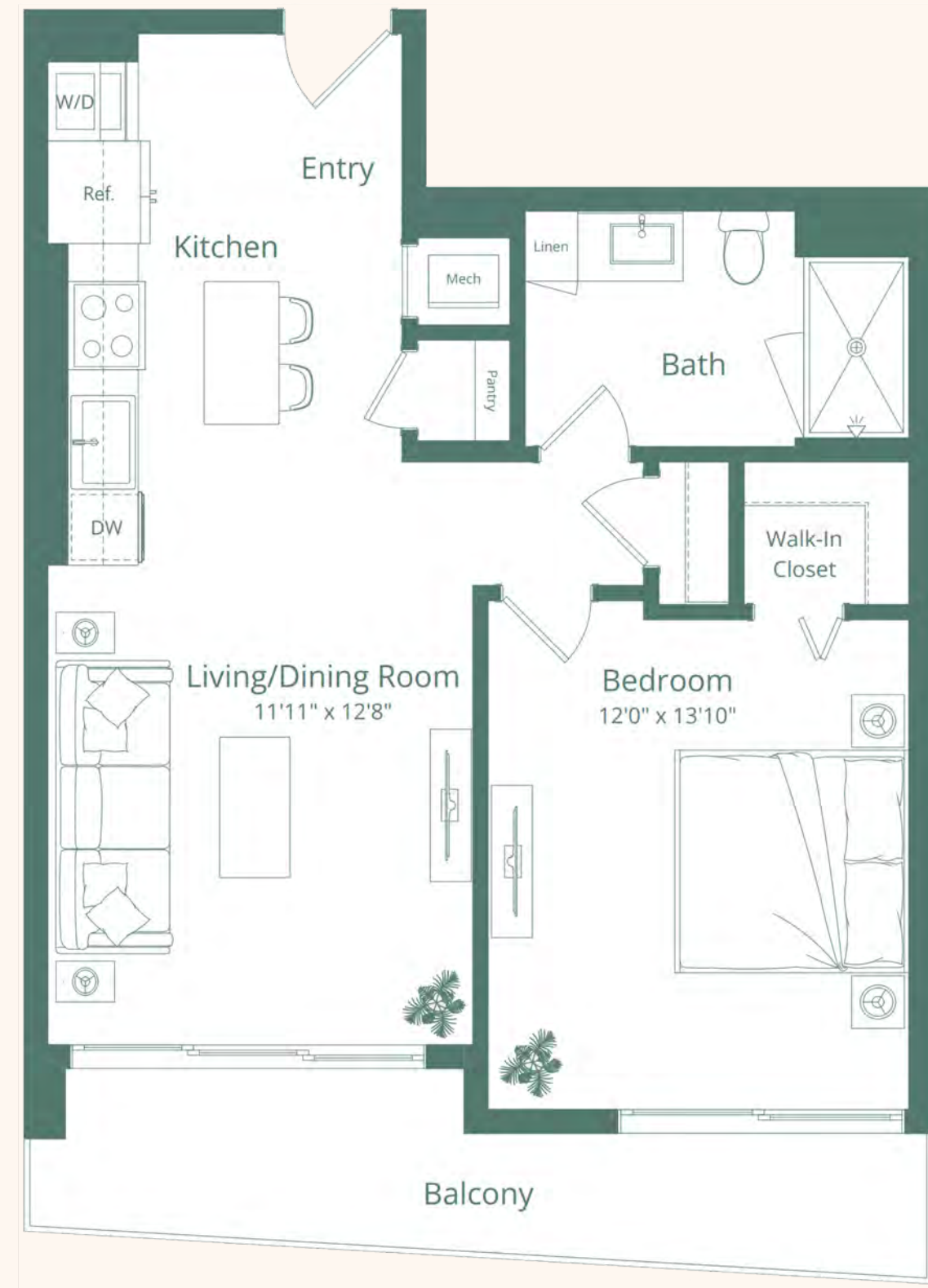
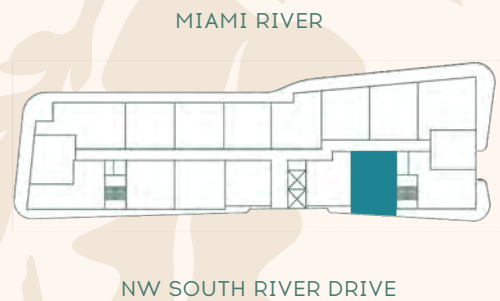
1 BEDROOM **1** BATH

UNIT 27
FLOORS 05 - 11

INTERIOR
707 SQ FT | 65 SQ M

EXTERIOR
163 SQ FT | 15 SQ M

TOTAL
870 SQ FT | 80 SQ M



Vista Harbor Residences (the "Condominium") is developed by 555 Alta Development LLC ("Developer") and you should rely only on the Developer's written representations. The illustrations and images are conceptual and may vary from concept to actual construction. The images are examples and do not reflect the design or décor of the completed Condominium. The floor plan, unit layout, locations of windows, doors, closets, plumbing fixtures, mechanical equipment, appliances, structural elements, architectural design elements, views, and the uses, configurations, and entries to rooms may change based on final approved plans, permitting, and completed construction. The furniture plan and the uses of space illustrated are suggested uses only and not intended to guaranty or represent any specific use of space. Furnishings, design features, and décor illustrated are not included with purchase of a Unit. Certain amenities and features may require additional expense by Unit owner. There are water views, but the Condominium is not waterfront and views will vary depending on the Unit purchased. No view, water or otherwise, is guaranteed. Consult only the Developer's Prospectus for the Condominium to learn terms, conditions, specifications, estimated costs, Unit views, and to learn what is included with a Unit purchase and how to calculate the Unit size. The balconies depicted are conceptual and the size will vary based on final permitting and completed construction. Pursuant to a license agreement, Developer has the right to use the trade names, marks, images, and logos of Alta Development LLC for so long as the license agreement is not terminated or otherwise lapses. Developer is not incorporated in, located in, nor a resident of New York and this is not intended to be an offer to sell, or solicitation of an offer to buy, condominium units in New York or to residents of New York, or residents of any other jurisdiction were prohibited by law. Reproduction for any use is not authorized. 2026 555 Alta Development, LLC. Artist's renderings of development; excludes images of surrounding and neighboring buildings.

E31

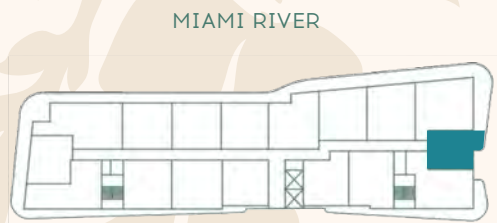
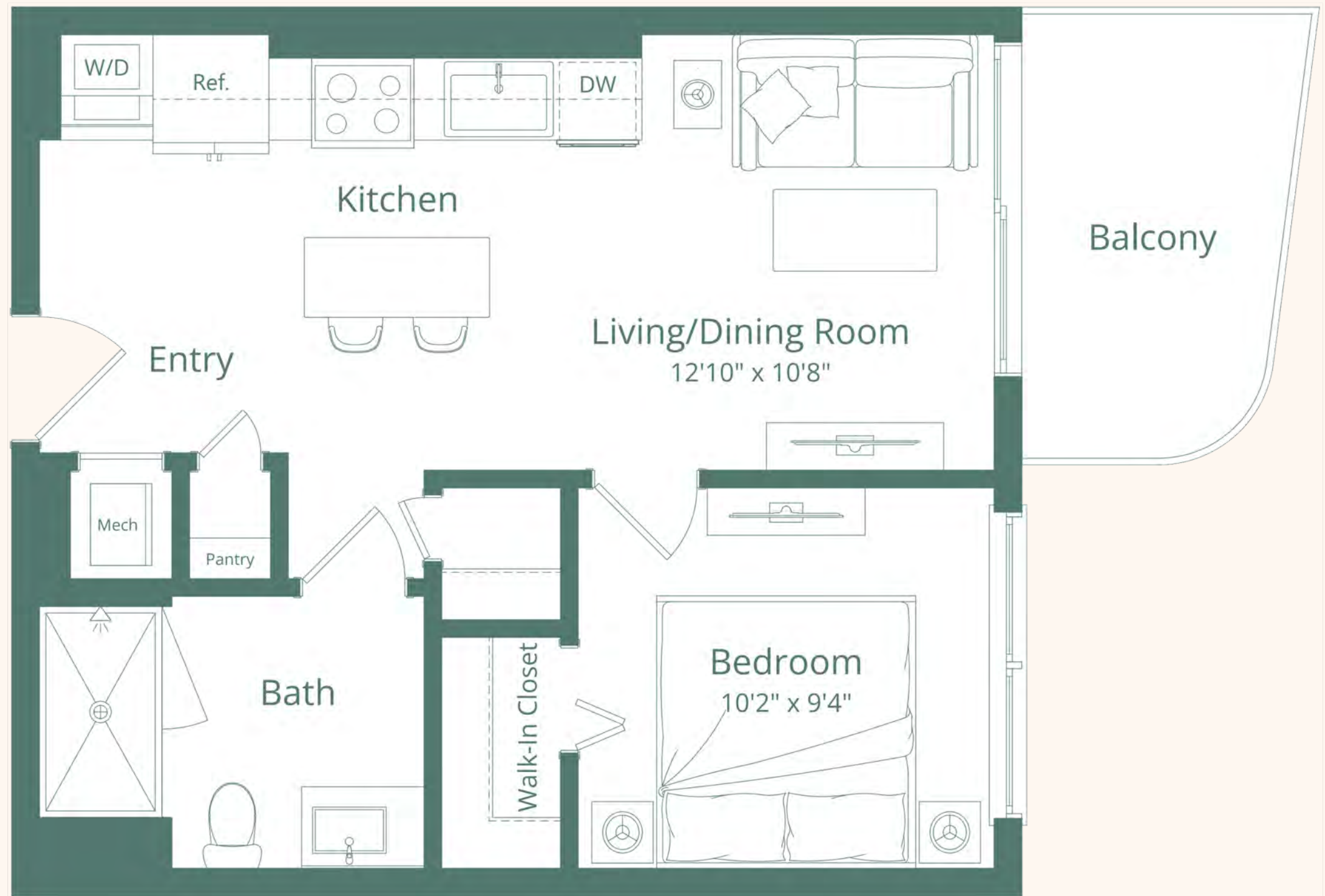
1 BEDROOM 1 BATH

UNIT 31
FLOORS 05 - 11

INTERIOR
515 SQ FT | 48 SQ M

EXTERIOR
70 SQ FT | 6 SQ M

TOTAL
585 SQ FT | 54 SQ M



BRICKELL SKYLINE

NW SOUTH RIVER DRIVE



Vista Harbor Residences (the "Condominium") is developed by 555 Alta Development LLC ("Developer") and you should rely only on the Developer's written representations. The illustrations and images are conceptual and may vary from concept to actual construction. The images are examples and do not reflect the design or décor of the completed Condominium. The floor plan, unit layout, locations of windows, doors, closets, plumbing fixtures, mechanical equipment, appliances, structural elements, architectural design elements, views, and the uses, configurations, and entries to rooms may change based on final approved plans, permitting, and completed construction. The furniture plan and the uses of space illustrated are suggested uses only and not intended to guaranty or represent any specific use of space. Furnishings, design features, and décor illustrated are not included with purchase of a Unit. Certain amenities and features may require additional expense by Unit owner. There are water views, but the Condominium is not waterfront and views will vary depending on the Unit purchased. No view, water or otherwise, is guaranteed. Consult only the Developer's Prospectus for the Condominium to learn terms, conditions, specifications, estimated costs, Unit views, and to learn what is included with a Unit purchase and how to calculate the Unit size. The balconies depicted are conceptual and the size will vary based on final permitting and completed construction. Pursuant to a license agreement, Developer has the right to use the trade names, marks, images, and logos of Alta Development LLC for so long as the license agreement is not terminated or otherwise lapses. Developer is not incorporated in, located in, nor a resident of New York and this is not intended to be an offer to sell, or solicitation of an offer to buy, condominium units in New York or to residents of New York, or residents of any other jurisdiction were prohibited by law. Reproduction for any use is not authorized. 2026 555 Alta Development, LLC. Artist's renderings of development; excludes images of surrounding and neighboring buildings.

W03

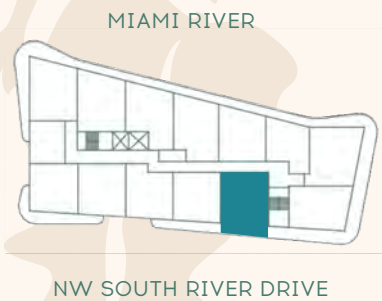
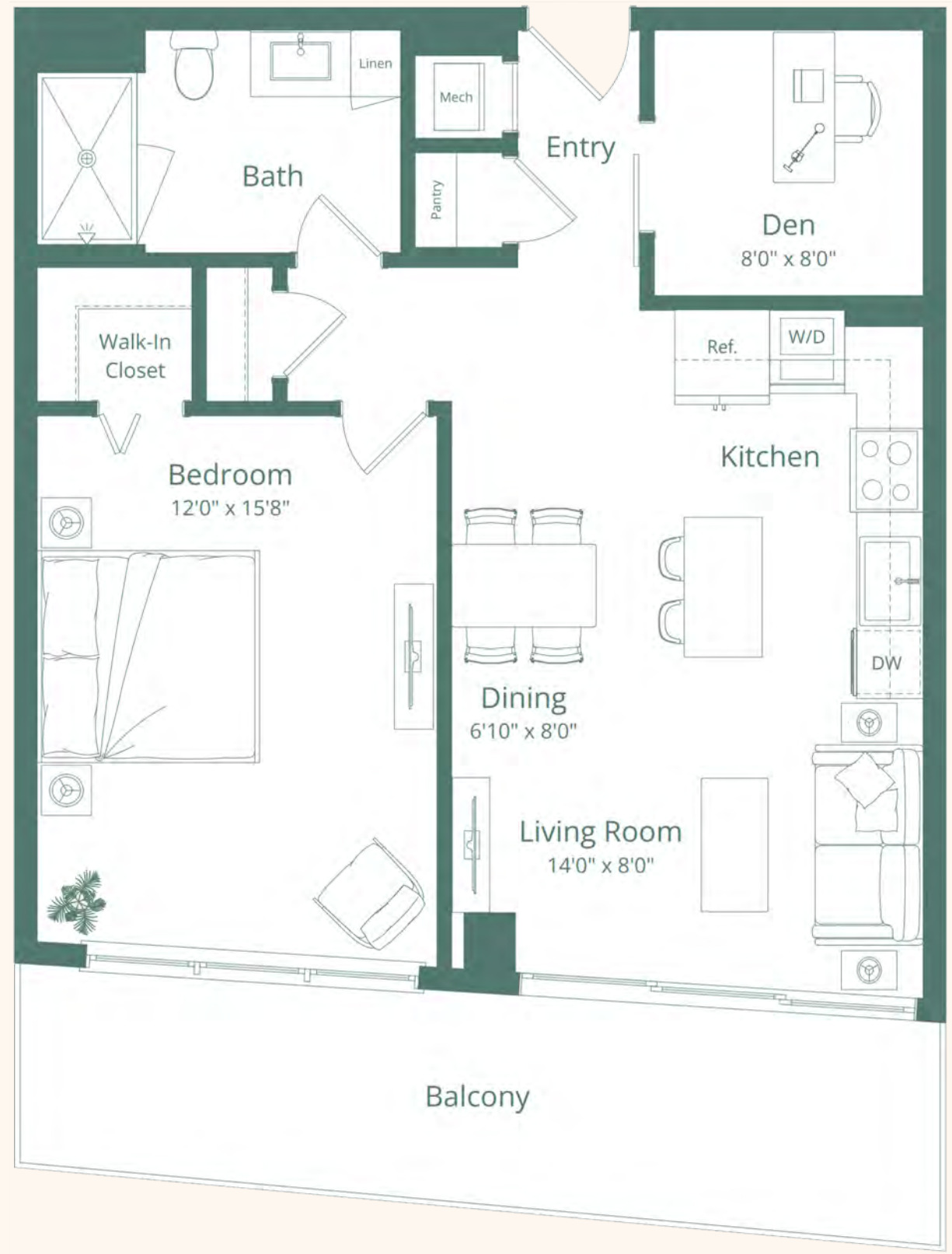
1 BEDROOM **1** BATH

UNIT 03
FLOORS 06 - 11

INTERIOR
804 SQ FT | 74 SQ M

EXTERIOR
256 SQ FT | 24 SQ M

TOTAL
1,060 SQ FT | 98 SQ M



Vista Harbor Residences (the "Condominium") is developed by 555 Alta Development LLC ("Developer") and you should rely only on the Developer's written representations. The illustrations and images are conceptual and may vary from concept to actual construction. The images are examples and do not reflect the design or décor of the completed Condominium. The floor plan, unit layout, locations of windows, doors, closets, plumbing fixtures, mechanical equipment, appliances, structural elements, architectural design elements, views, and the uses, configurations, and entries to rooms may change based on final approved plans, permitting, and completed construction. The furniture plan and the uses of space illustrated are suggested uses only and not intended to guaranty or represent any specific use of space. Furnishings, design features, and décor illustrated are not included with purchase of a Unit. Certain amenities and features may require additional expense by Unit owner. There are water views, but the Condominium is not waterfront and views will vary depending on the Unit purchased. No view, water or otherwise, is guaranteed. Consult only the Developer's Prospectus for the Condominium to learn terms, conditions, specifications, estimated costs, Unit views, and to learn what is included with a Unit purchase and how to calculate the Unit size. The balconies depicted are conceptual and the size will vary based on final permitting and completed construction. Pursuant to a license agreement, Developer has the right to use the trade names, marks, images, and logos of Alta Development LLC for so long as the license agreement is not terminated or otherwise lapses. Developer is not incorporated in, located in, nor a resident of New York and this is not intended to be an offer to sell, or solicitation of an offer to buy, condominium units in New York or to residents of New York, or residents of any other jurisdiction were prohibited by law. Reproduction for any use is not authorized. 2026 555 Alta Development, LLC. Artist's renderings of development; excludes images of surrounding and neighboring buildings.



WO4

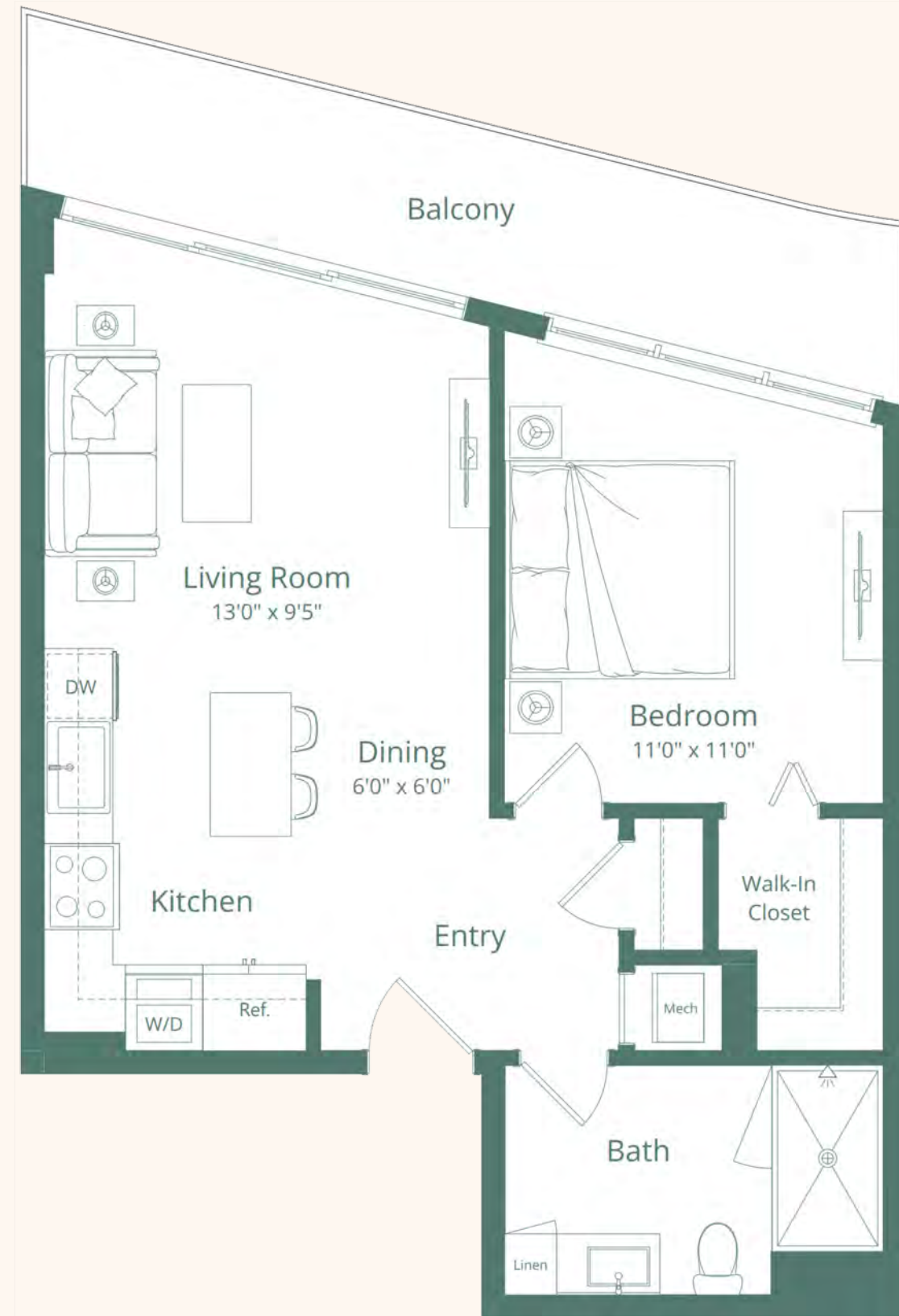
1 BEDROOM 1 BATH

UNIT 04
FLOORS 06 - 11

INTERIOR
649 SQ FT | 60 SQ M

EXTERIOR
133 SQ FT | 12 SQ M

TOTAL
782 SQ FT | 72 SQ M



BRICKELL SKYLINE

NW SOUTH RIVER DRIVE



Vista Harbor Residences (the "Condominium") is developed by 555 Alta Development LLC ("Developer") and you should rely only on the Developer's written representations. The illustrations and images are conceptual and may vary from concept to actual construction. The images are examples and do not reflect the design or décor of the completed Condominium. The floor plan, unit layout, locations of windows, doors, closets, plumbing fixtures, mechanical equipment, appliances, structural elements, architectural design elements, views, and the uses, configurations, and entries to rooms may change based on final approved plans, permitting, and completed construction. The furniture plan and the uses of space illustrated are suggested uses only and not intended to guaranty or represent any specific use of space. Furnishings, design features, and décor illustrated are not included with purchase of a Unit. Certain amenities and features may require additional expense by Unit owner. There are water views, but the Condominium is not waterfront and views will vary depending on the Unit purchased. No view, water or otherwise, is guaranteed. Consult only the Developer's Prospectus for the Condominium to learn terms, conditions, specifications, estimated costs, Unit views, and to learn what is included with a Unit purchase and how to calculate the Unit size. The balconies depicted are conceptual and the size will vary based on final permitting and completed construction. Pursuant to a license agreement, Developer has the right to use the trade names, marks, images, and logos of Alta Development LLC for so long as the license agreement is not terminated or otherwise lapses. Developer is not incorporated in, located in, nor a resident of New York and this is not intended to be an offer to sell, or solicitation of an offer to buy, condominium units in New York or to residents of New York, or residents of any other jurisdiction were prohibited by law. Reproduction for any use is not authorized. 2026 555 Alta Development, LLC. Artist's renderings of development; excludes images of surrounding and neighboring buildings.



W05

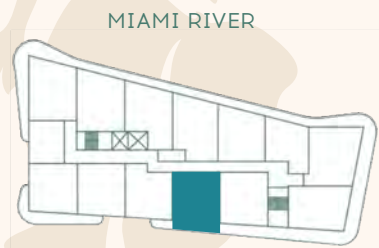
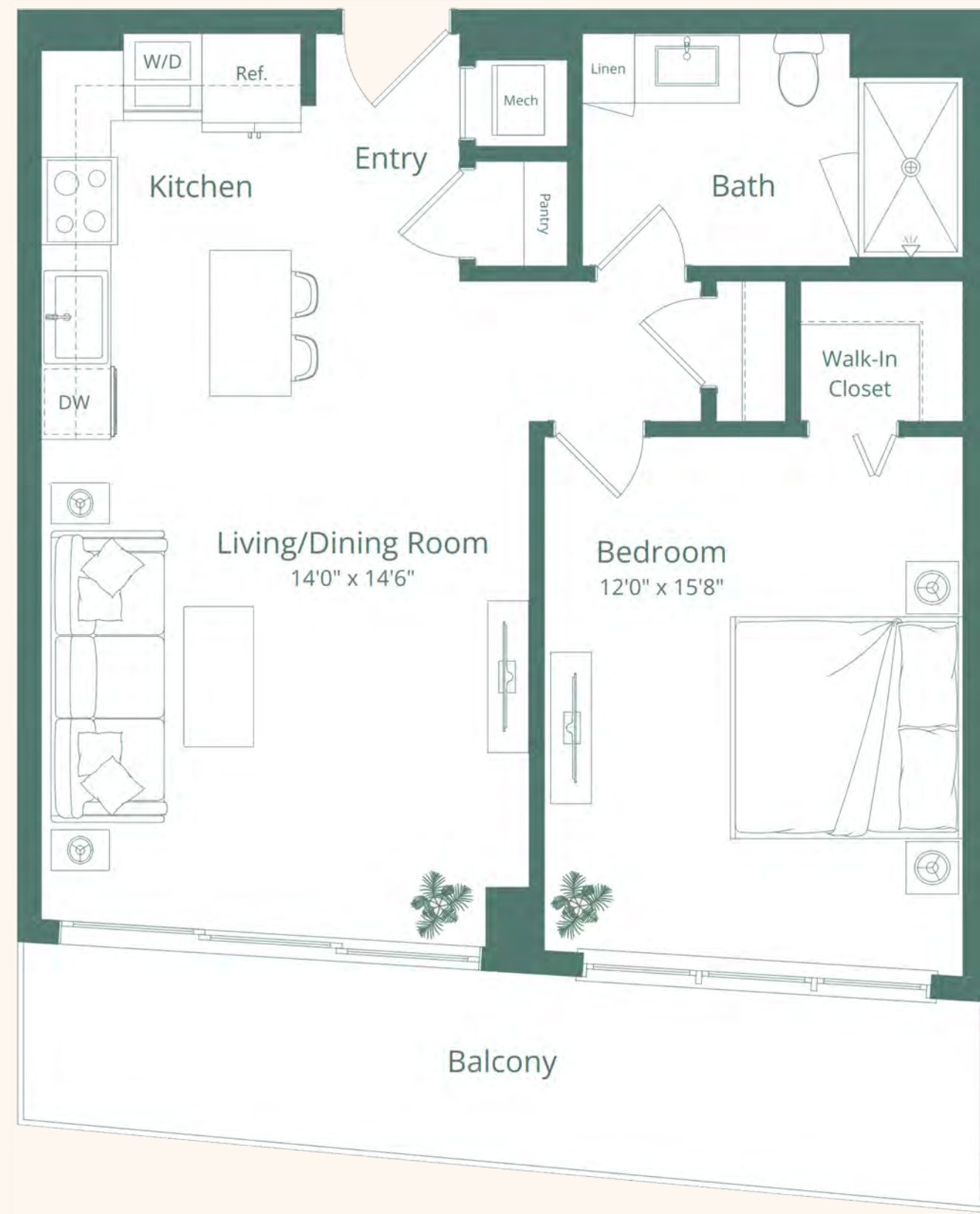
1 BEDROOM **1** BATH

UNIT 05
FLOORS 06 - 11

INTERIOR
749 SQ FT | 69 SQ M

EXTERIOR
154 SQ FT | 14 SQ M

TOTAL
903 SQ FT | 83 SQ M



BRICKELL SKYLINE

NW SOUTH RIVER DRIVE



Vista Harbor Residences (the "Condominium") is developed by 555 Alta Development LLC ("Developer") and you should rely only on the Developer's written representations. The illustrations and images are conceptual and may vary from concept to actual construction. The images are examples and do not reflect the design or décor of the completed Condominium. The floor plan, unit layout, locations of windows, doors, closets, plumbing fixtures, mechanical equipment, appliances, structural elements, architectural design elements, views, and the uses, configurations, and entries to rooms may change based on final approved plans, permitting, and completed construction. The furniture plan and the uses of space illustrated are suggested uses only and not intended to guaranty or represent any specific use of space. Furnishings, design features, and décor illustrated are not included with purchase of a Unit. Certain amenities and features may require additional expense by Unit owner. There are water views, but the Condominium is not waterfront and views will vary depending on the Unit purchased. No view, water or otherwise, is guaranteed. Consult only the Developer's Prospectus for the Condominium to learn terms, conditions, specifications, estimated costs, Unit views, and to learn what is included with a Unit purchase and how to calculate the Unit size. The balconies depicted are conceptual and the size will vary based on final permitting and completed construction. Pursuant to a license agreement, Developer has the right to use the trade names, marks, images, and logos of Alta Development LLC for so long as the license agreement is not terminated or otherwise lapses. Developer is not incorporated in, located in, nor a resident of New York and this is not intended to be an offer to sell, or solicitation of an offer to buy, condominium units in New York or to residents of New York, or residents of any other jurisdiction were prohibited by law. Reproduction for any use is not authorized. 2026 555 Alta Development, LLC. Artist's renderings of development; excludes images of surrounding and neighboring buildings.



W05-A

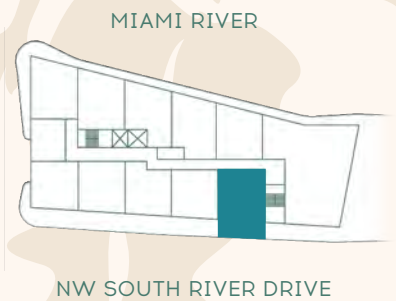
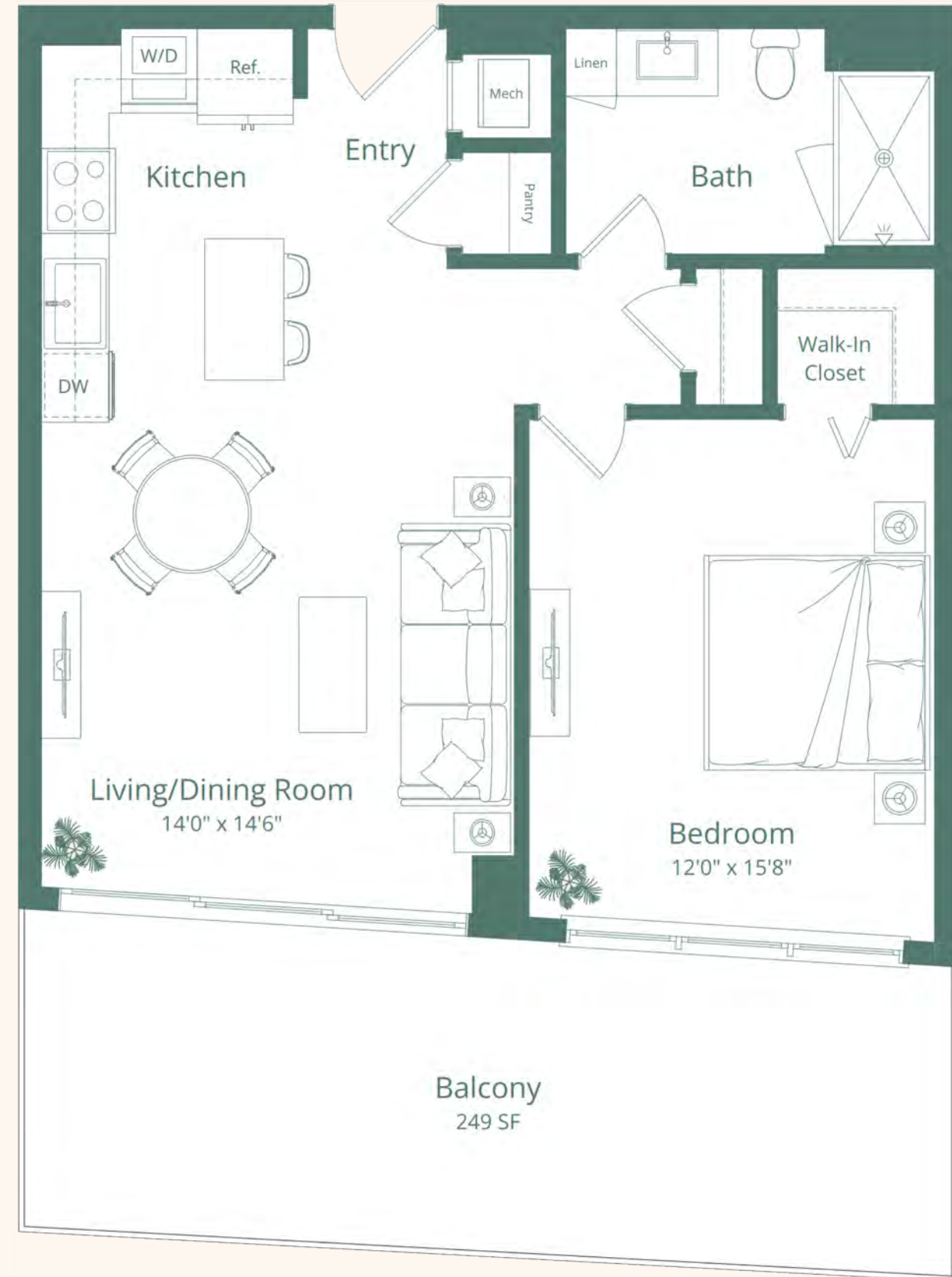
1 BEDROOM 1 BATH

UNIT 05
FLOOR 05

INTERIOR
749 SQ FT | 70 SQ M

EXTERIOR
249 SQ FT | 23 SQ M

TOTAL
998 SQ FT | 93 SQ M



W07

1 BEDROOM 1 BATH

UNIT 07
FLOORS 06 - 11

INTERIOR
765 SQ FT | 71 SQ M

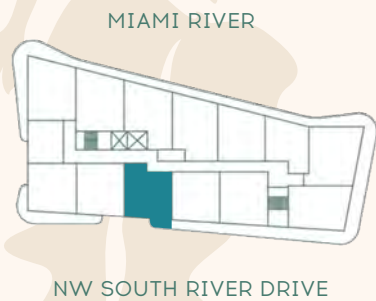
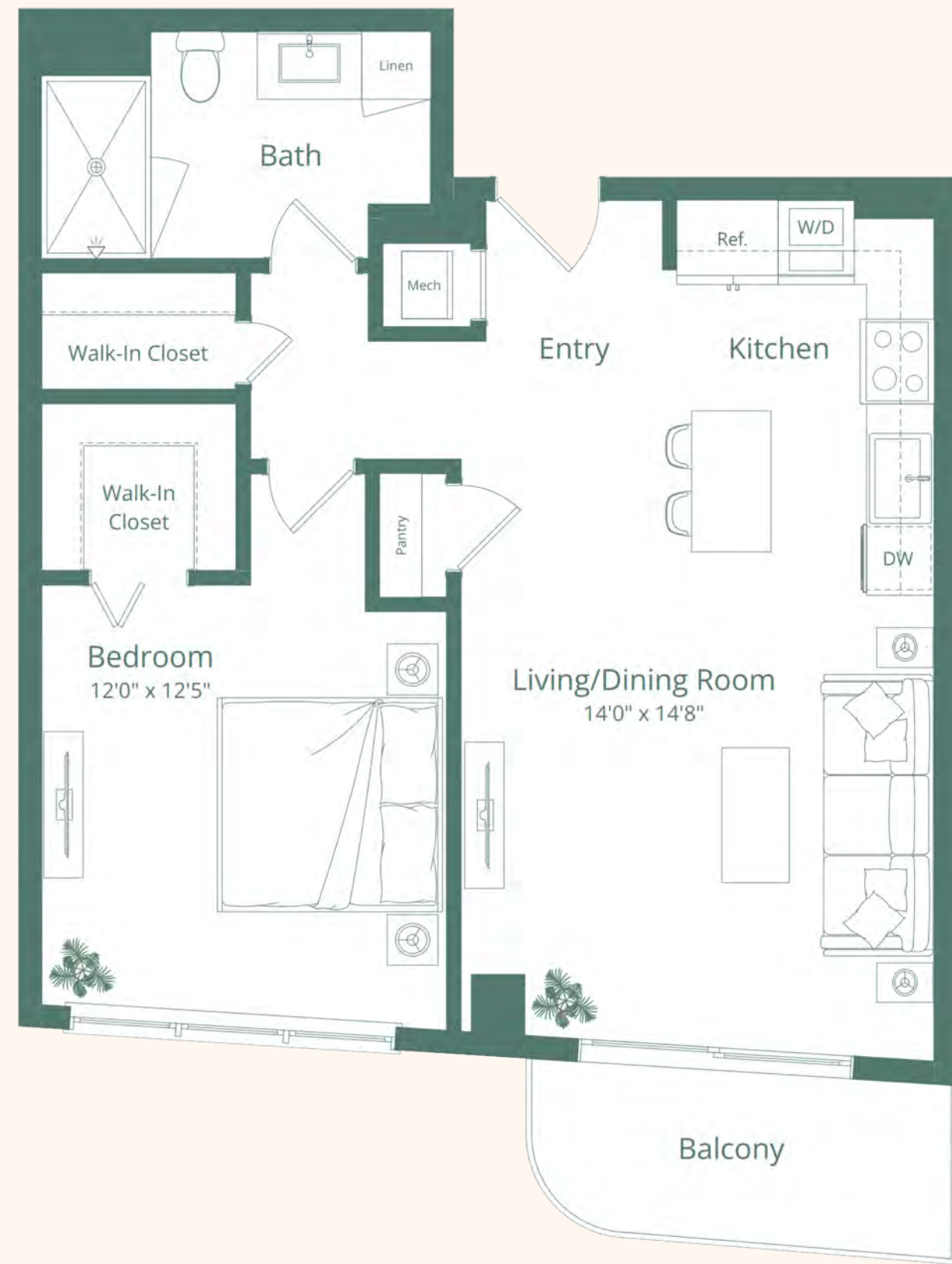
EXTERIOR
63 SQ FT | 6 SQ M

TOTAL
828 SQ FT | 77 SQ M



VISTA HARBOR

RESIDENCES & YACHT CLUB



Vista Harbor Residences (the "Condominium") is developed by 555 Alta Development LLC ("Developer") and you should rely only on the Developer's written representations. The illustrations and images are conceptual and may vary from concept to actual construction. The images are examples and do not reflect the design or décor of the completed Condominium. The floor plan, unit layout, locations of windows, doors, closets, plumbing fixtures, mechanical equipment, appliances, structural elements, architectural design elements, views, and the uses, configurations, and entries to rooms may change based on final approved plans, permitting, and completed construction. The furniture plan and the uses of space illustrated are suggested uses only and not intended to guaranty or represent any specific use of space. Furnishings, design features, and décor illustrated are not included with purchase of a Unit. Certain amenities and features may require additional expense by Unit owner. There are water views, but the Condominium is not waterfront and views will vary depending on the Unit purchased. No view, water or otherwise, is guaranteed. Consult only the Developer's Prospectus for the Condominium to learn terms, conditions, specifications, estimated costs, Unit views, and to learn what is included with a Unit purchase and how to calculate the Unit size. The balconies depicted are conceptual and the size will vary based on final permitting and completed construction. Pursuant to a license agreement, Developer has the right to use the trade names, marks, images, and logos of Alta Development LLC for so long as the license agreement is not terminated or otherwise lapses. Developer is not incorporated in, located in, nor a resident of New York and this is not intended to be an offer to sell, or solicitation of an offer to buy, condominium units in New York or to residents of New York, or residents of any other jurisdiction were prohibited by law. Reproduction for any use is not authorized. 2026 555 Alta Development, LLC. Artist's renderings of development; excludes images of surrounding and neighboring buildings.



W07-A

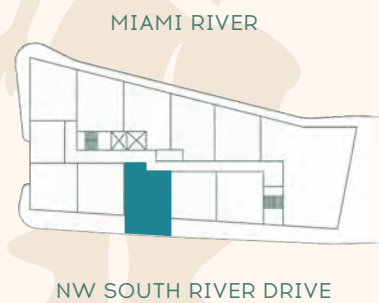
1 BEDROOM 1 BATH

UNIT 07
FLOOR 05

INTERIOR
765 SQ FT | 71 SQ M

EXTERIOR
261 SQ FT | 24 SQ M

TOTAL
1026 SQ FT | 95 SQ M



W11

1 BEDROOM 1 BATH

UNIT 11
FLOORS 06 - 11

INTERIOR
752 SQ FT | 70 SQ M

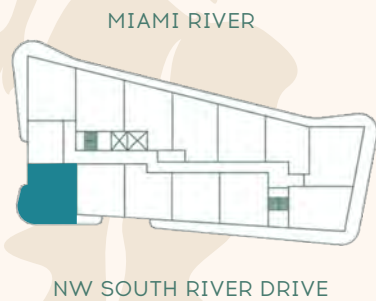
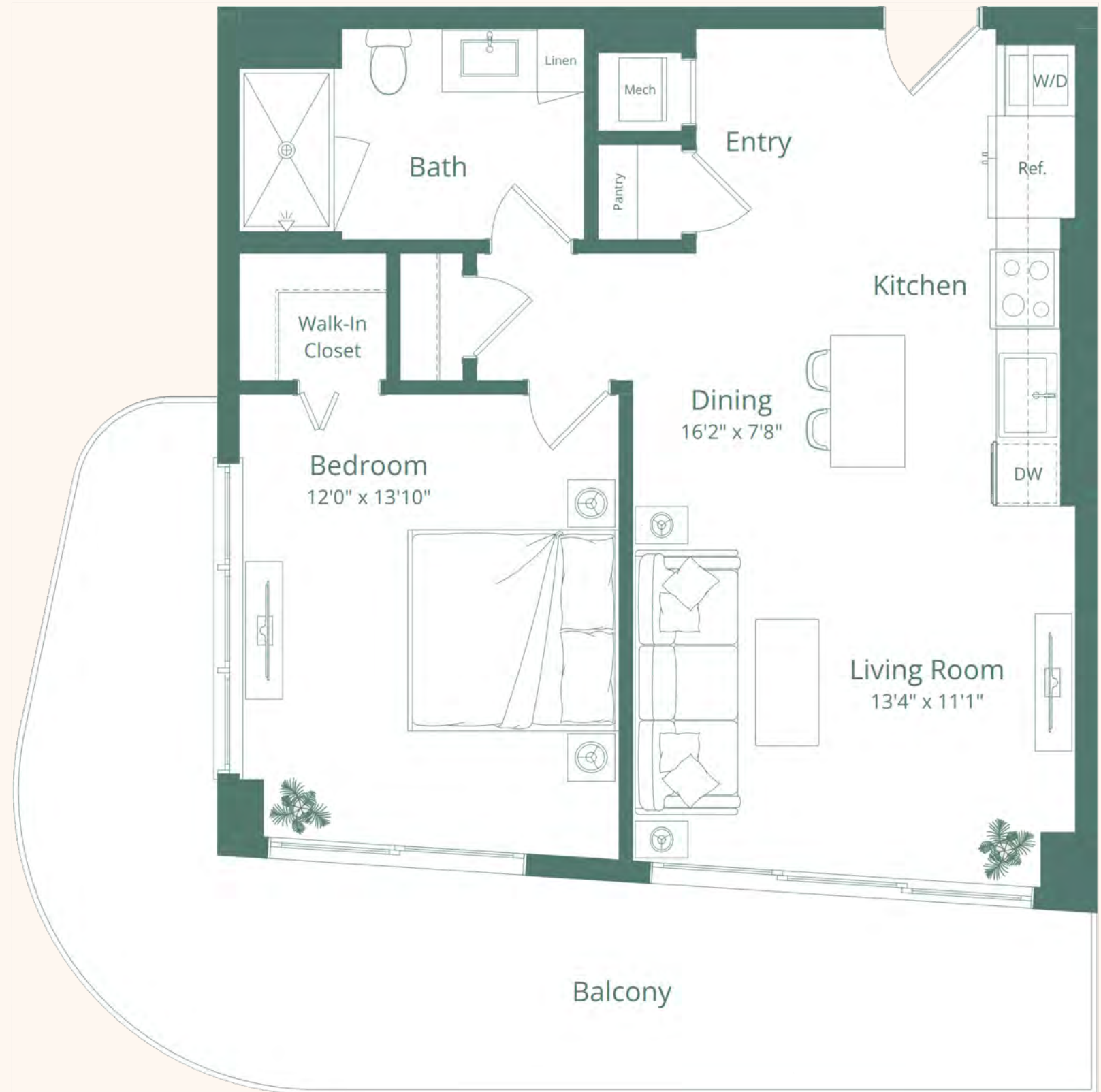
EXTERIOR
289 SQ FT | 27 SQ M

TOTAL
1,041 SQ FT | 97 SQ M



VISTA HARBOR

RESIDENCES & YACHT CLUB



MIAMI RIVER

BRICKELL SKYLINE

NW SOUTH RIVER DRIVE



Vista Harbor Residences (the "Condominium") is developed by 555 Alta Development LLC ("Developer") and you should rely only on the Developer's written representations. The illustrations and images are conceptual and may vary from concept to actual construction. The images are examples and do not reflect the design or décor of the completed Condominium. The floor plan, unit layout, locations of windows, doors, closets, plumbing fixtures, mechanical equipment, appliances, structural elements, architectural design elements, views, and the uses, configurations, and entries to rooms may change based on final approved plans, permitting, and completed construction. The furniture plan and the uses of space illustrated are suggested uses only and not intended to guaranty or represent any specific use of space. Furnishings, design features, and décor illustrated are not included with purchase of a Unit. Certain amenities and features may require additional expense by Unit owner. There are water views, but the Condominium is not waterfront and views will vary depending on the Unit purchased. No view, water or otherwise, is guaranteed. Consult only the Developer's Prospectus for the Condominium to learn terms, conditions, specifications, estimated costs, Unit views, and to learn what is included with a Unit purchase and how to calculate the Unit size. The balconies depicted are conceptual and the size will vary based on final permitting and completed construction. Pursuant to a license agreement, Developer has the right to use the trade names, marks, images, and logos of Alta Development LLC for so long as the license agreement is not terminated or otherwise lapses. Developer is not incorporated in, located in, nor a resident of New York and this is not intended to be an offer to sell, or solicitation of an offer to buy, condominium units in New York or to residents of New York, or residents of any other jurisdiction were prohibited by law. Reproduction for any use is not authorized. 2026 555 Alta Development, LLC. Artist's renderings of development; excludes images of surrounding and neighboring buildings.

W11-A

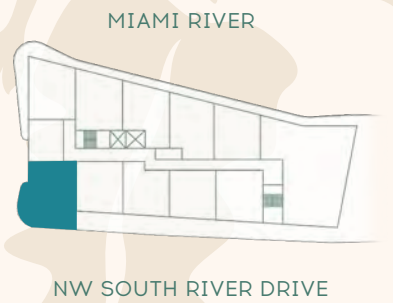
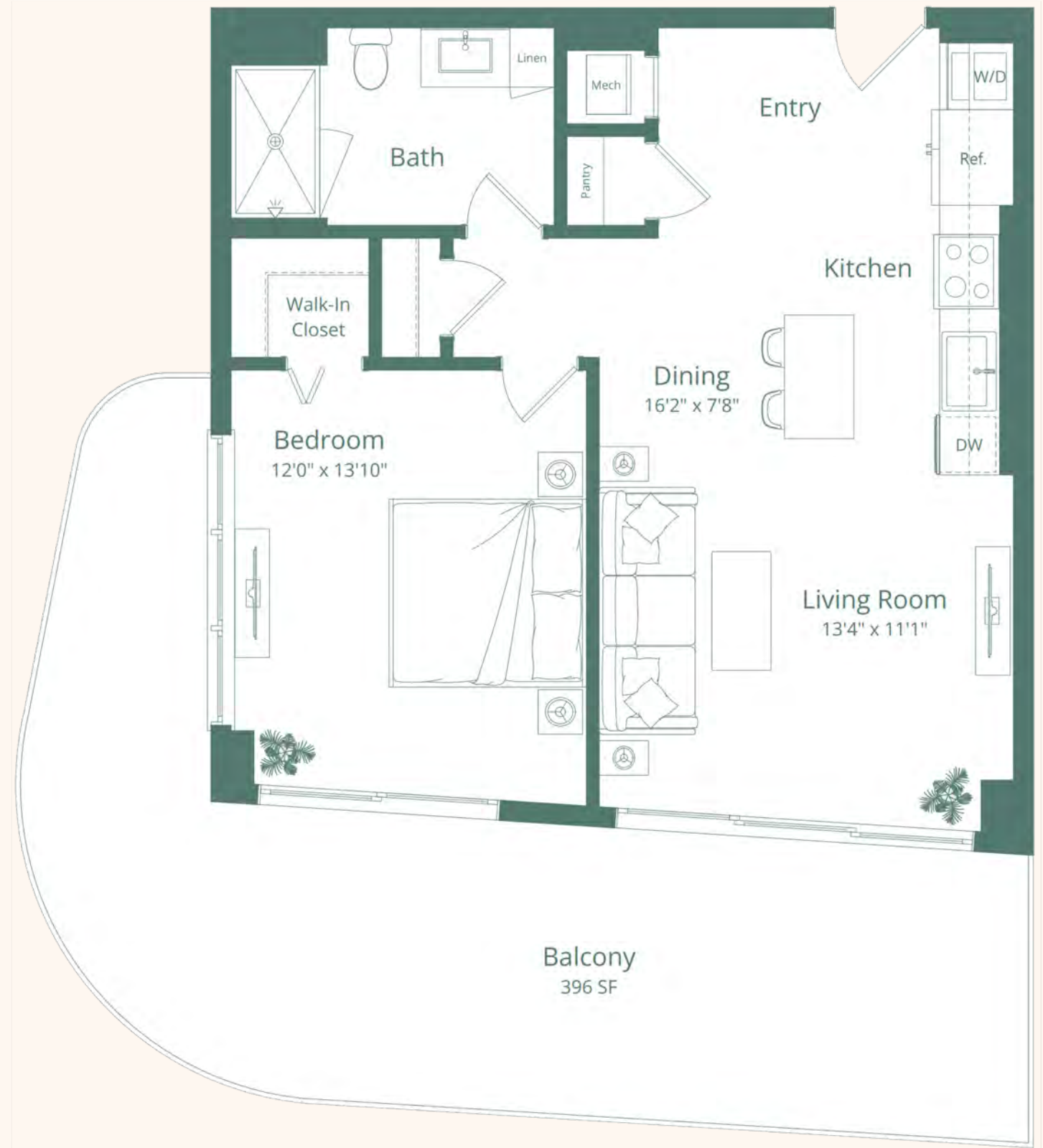
1 BEDROOM **1** BATH

UNIT 11
FLOOR 05

INTERIOR
752 SQ FT | 70 SQ M

EXTERIOR
396 SQ FT | 37 SQ M

TOTAL
1,148 SQ FT | 107 SQ M



Vista Harbor Residences (the "Condominium") is developed by 555 Alta Development LLC ("Developer") and you should rely only on the Developer's written representations. The illustrations and images are conceptual and may vary from concept to actual construction. The images are examples and do not reflect the design or décor of the completed Condominium. The floor plan, unit layout, locations of windows, doors, closets, plumbing fixtures, mechanical equipment, appliances, structural elements, architectural design elements, views, and the uses, configurations, and entries to rooms may change based on final approved plans, permitting, and completed construction. The furniture plan and the uses of space illustrated are suggested uses only and not intended to guaranty or represent any specific use of space. Furnishings, design features, and décor illustrated are not included with purchase of a Unit. Certain amenities and features may require additional expense by Unit owner. There are water views, but the Condominium is not waterfront and views will vary depending on the Unit purchased. No view, water or otherwise, is guaranteed. Consult only the Developer's Prospectus for the Condominium to learn terms, conditions, specifications, estimated costs, Unit views, and to learn what is included with a Unit purchase and how to calculate the Unit size. The balconies depicted are conceptual and the size will vary based on final permitting and completed construction. Pursuant to a license agreement, Developer has the right to use the trade names, marks, images, and logos of Alta Development LLC for so long as the license agreement is not terminated or otherwise lapses. Developer is not incorporated in, located in, nor a resident of New York and this is not intended to be an offer to sell, or solicitation of an offer to buy, condominium units in New York or to residents of New York, or residents of any other jurisdiction were prohibited by law. Reproduction for any use is not authorized. 2026 555 Alta Development, LLC. Artist's renderings of development; excludes images of surrounding and neighboring buildings.

