

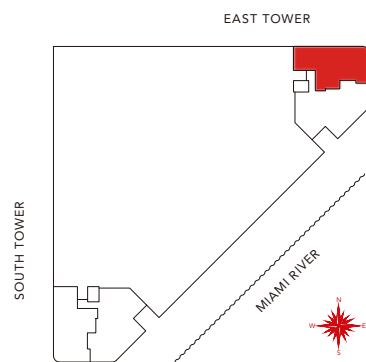
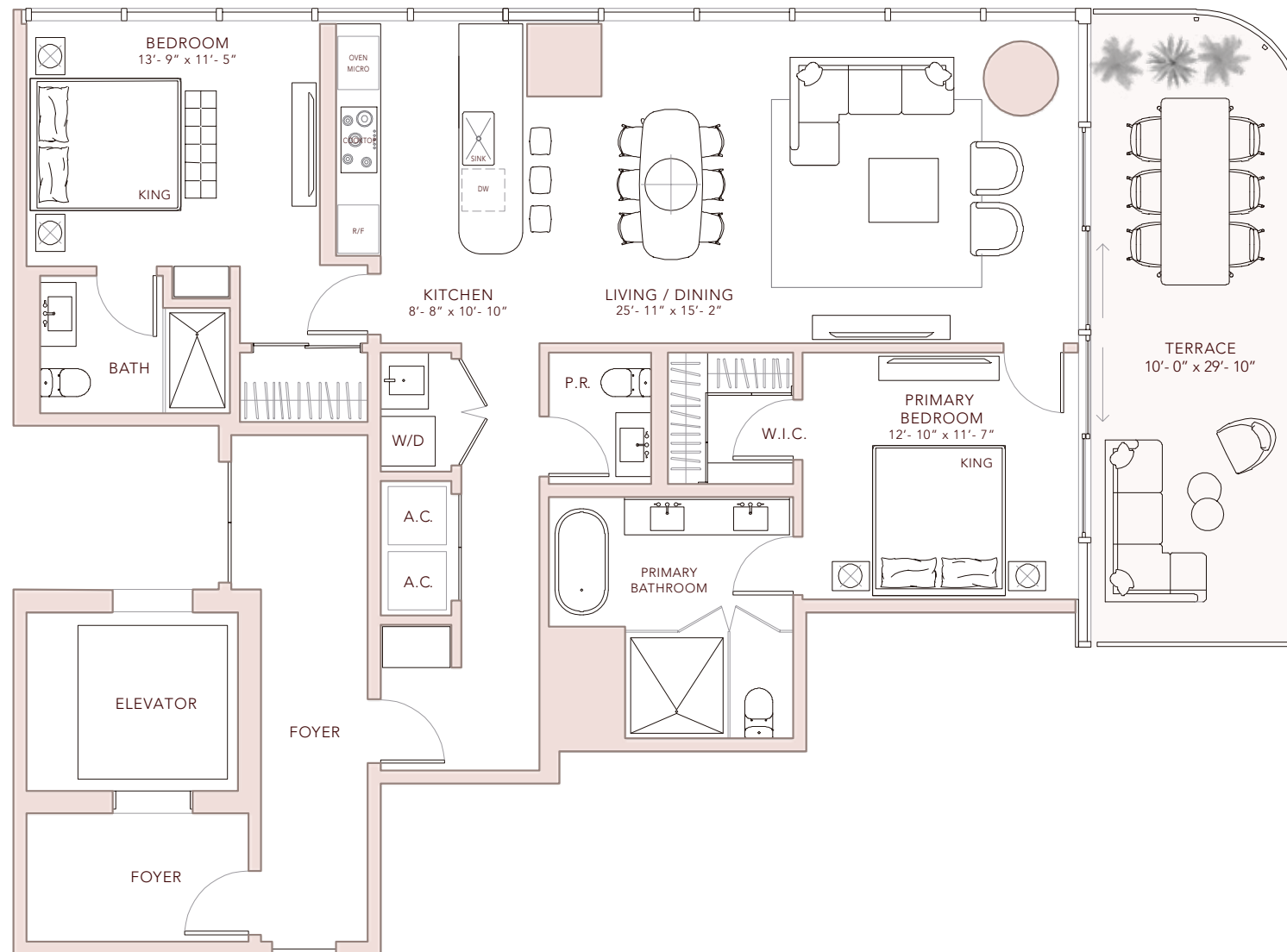
RIVER LOFTS
EAST
River Loft 1

LEVELS 6 - 7 & 9

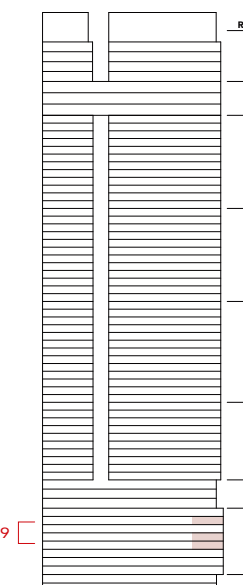
2 BEDROOMS
2 BATHROOMS
POWDER ROOM

INDOOR: 1,429 ft² 133 m²
OUTDOOR: 292 ft² 27 m²
TOTAL LIVING: 1,721 ft² 160 m²

**FAENA
RESIDENCES**
MIAMI



SOUTH TOWER EAST TOWER



ORAL REPRESENTATIONS CANNOT BE RELIED UPON AS CORRECTLY STATING THE REPRESENTATIONS OF THE DEVELOPER. FOR CORRECT REPRESENTATIONS, MAKE REFERENCE TO THIS BROCHURE AND TO THE DOCUMENTS REQUIRED BY SECTION 718.503, FLORIDA STATUTES, TO BE FURNISHED BY A DEVELOPER TO A BUYER OR LESSEE. This Condominium is being developed by FRM Associates LLC, a Florida limited liability company (the "Developer"). Neither Fortune International Group, KAR Properties nor Faena are the Developer. This is not intended to be an offer to sell, or solicitation to buy, condominium units to residents of any jurisdiction where prohibited by law, and your eligibility for purchase will depend upon your state of residency. This offering is made only by the prospectus for the condominium and no statement should be relied upon if not made in the prospectus. These materials should not be relied upon as representations, express or implied, of the final detail of the residences or the Condominium. All stated dimensions and ceiling heights are approximate and all floor plans and development plans are subject to change. Stated interior square footage is measured to the exterior face of exterior walls and to the centerline of interior demising walls or to the exterior face of walls adjoining corridors or other common elements or shared facilities without excluding areas that may be occupied by columns or other structural components. This method of measurement varies from, and is larger than, the dimensions that would be determined by using the description and the definition of the Unit set forth in the Declaration (which generally only includes the interior airspace between the perimeter walls and excludes structural components). For reference, the area of the unit, determined in accordance with the unit boundaries set forth in the Declaration is set forth in Exhibit "3" to the Declaration.

DEVELOPED BY

**FORTUNE
INTERNATIONAL
GROUP**



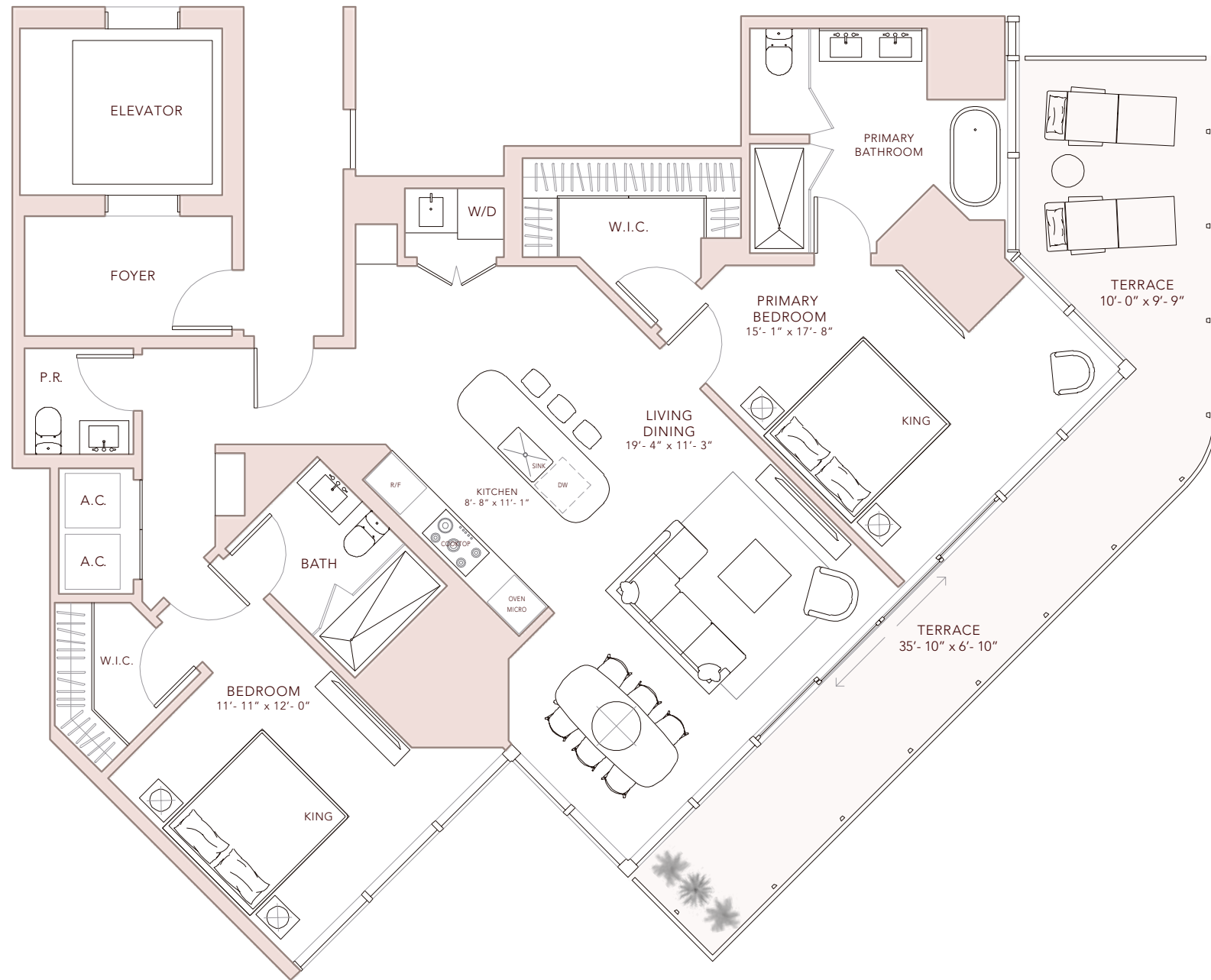
LEVELS 6 - 7 & 9

RIVER LOFTS
EAST
River Loft 2

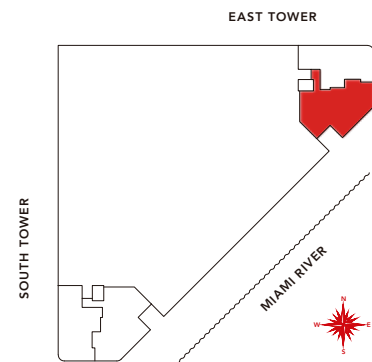
LEVELS 6 - 7 & 9

2 BEDROOMS
2 BATHROOMS
POWDER ROOM

INDOOR: 1,540 ft² 143 m²
OUTDOOR: 363 ft² 34 m²
TOTAL LIVING: 1,903 ft² 177 m²

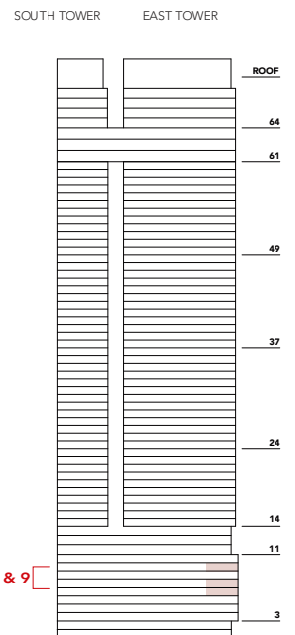


**FAENA
RESIDENCES**
MIAMI



ORAL REPRESENTATIONS CANNOT BE RELIED UPON AS CORRECTLY STATING THE REPRESENTATIONS OF THE DEVELOPER. FOR CORRECT REPRESENTATIONS, MAKE REFERENCE TO THIS BROCHURE AND TO THE DOCUMENTS REQUIRED BY SECTION 718.503, FLORIDA STATUTES, TO BE FURNISHED BY A DEVELOPER TO A BUYER OR LESSEE. This Condominium is being developed by FRM Associates LLC, a Florida limited liability company (the "Developer"). Neither Fortune International Group, KAR Properties nor Faena are the Developer. This is not intended to be an offer to sell, or solicitation to buy, condominium units to residents of any jurisdiction where prohibited by law, and your eligibility for purchase will depend upon your state of residency. This offering is made only by the prospectus for the condominium and no statement should be relied upon if not made in the prospectus. These materials should not be relied upon as representations, express or implied, of the final detail of the residences or the Condominium. All stated dimensions and ceiling heights are approximate and all floor plans and development plans are subject to change. Stated interior square footage is measured to the exterior face of exterior walls and to the centerline of interior demising walls or to the exterior face of walls adjoining corridors or other common elements or shared facilities without excluding areas that may be occupied by columns or other structural components. This method of measurement varies from, and is larger than, the dimensions that would be determined by using the description and the definition of the Unit set forth in the Declaration (which generally only includes the interior airspace between the perimeter walls and excludes structural components). For reference, the area of the unit, determined in accordance with the unit boundaries set forth in the Declaration is set forth in Exhibit "3" to the Declaration.

DEVELOPED BY
FORTUNE INTERNATIONAL GROUP
KAR PROPERTIES



LEVELS 6 - 7 & 9

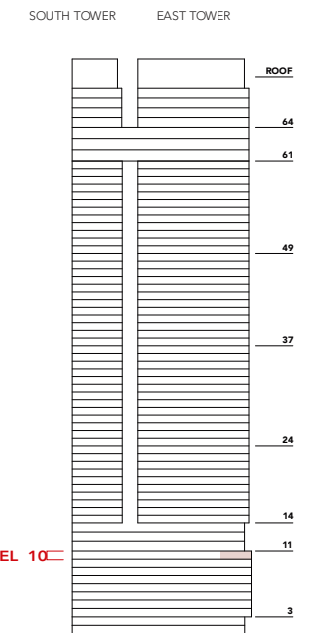
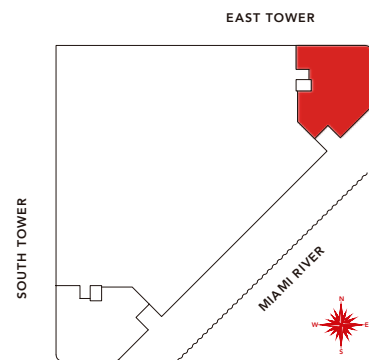
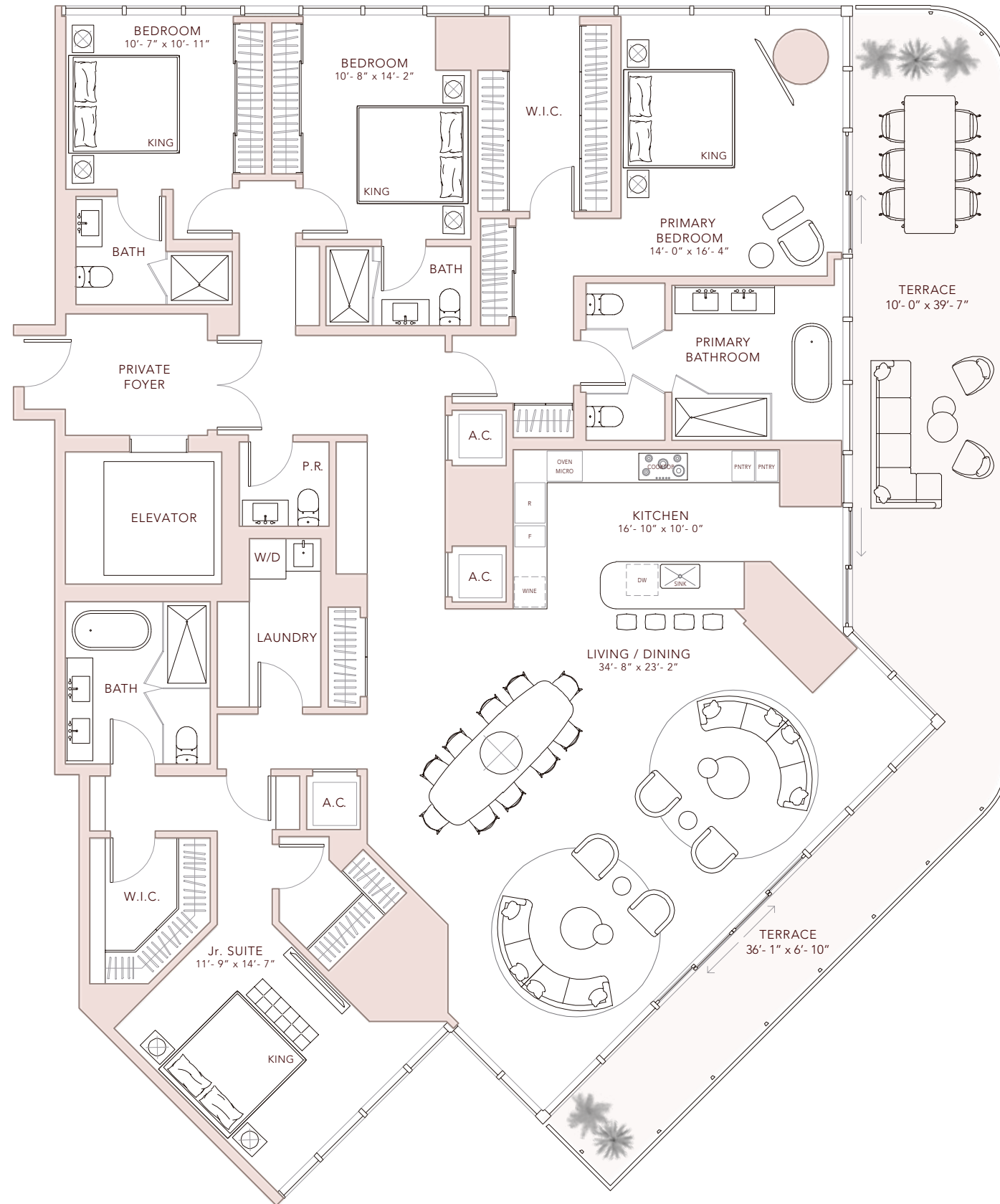
RIVER LOFTS
EAST
River Loft 3B

LEVEL 10

4 BEDROOMS
4 BATHROOMS
POWDER ROOM

INDOOR: 3,304 ft² 307 m²
OUTDOOR: 655 ft² 61 m²
TOTAL LIVING: 3,959 ft² 368 m²

**FAENA
RESIDENCES**
MIAMI



ORAL REPRESENTATIONS CANNOT BE RELIED UPON AS CORRECTLY STATING THE REPRESENTATIONS OF THE DEVELOPER. FOR CORRECT REPRESENTATIONS, MAKE REFERENCE TO THIS BROCHURE AND TO THE DOCUMENTS REQUIRED BY SECTION 718.503, FLORIDA STATUTES, TO BE FURNISHED BY A DEVELOPER TO A BUYER OR LESSEE. This Condominium is being developed by FRM Associates LLC, a Florida limited liability company (the "Developer"). Neither Fortune International Group, KAR Properties nor Faena are the Developer. This is not intended to be an offer to sell, or solicitation to buy, condominium units to residents of any jurisdiction where prohibited by law, and your eligibility for purchase will depend upon your state of residency. This offering is made only by the prospectus for the condominium and no statement should be relied upon if not made in the prospectus. These materials should not be relied upon as representations, express or implied, of the final detail of the residences or the Condominium. All stated dimensions and ceiling heights are approximate and all floor plans and development plans are subject to change. Stated interior square footage is measured to the exterior face of exterior walls and to the centerline of interior demising walls or to the exterior face of walls adjoining corridors or other common elements or shared facilities without excluding areas that may be occupied by columns or other structural components. This method of measurement varies from, and is larger than, the dimensions that would be determined by using the description and the definition of the Unit set forth in the Declaration (which generally only includes the interior airspace between the perimeter walls and excludes structural components). For reference, the area of the unit, determined in accordance with the unit boundaries set forth in the Declaration is set forth in Exhibit "3" to the Declaration.

DEVELOPED BY
FORTUNE INTERNATIONAL GROUP
KAR PROPERTIES

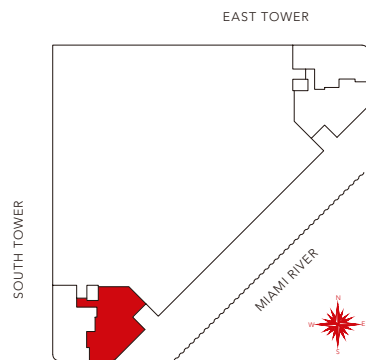
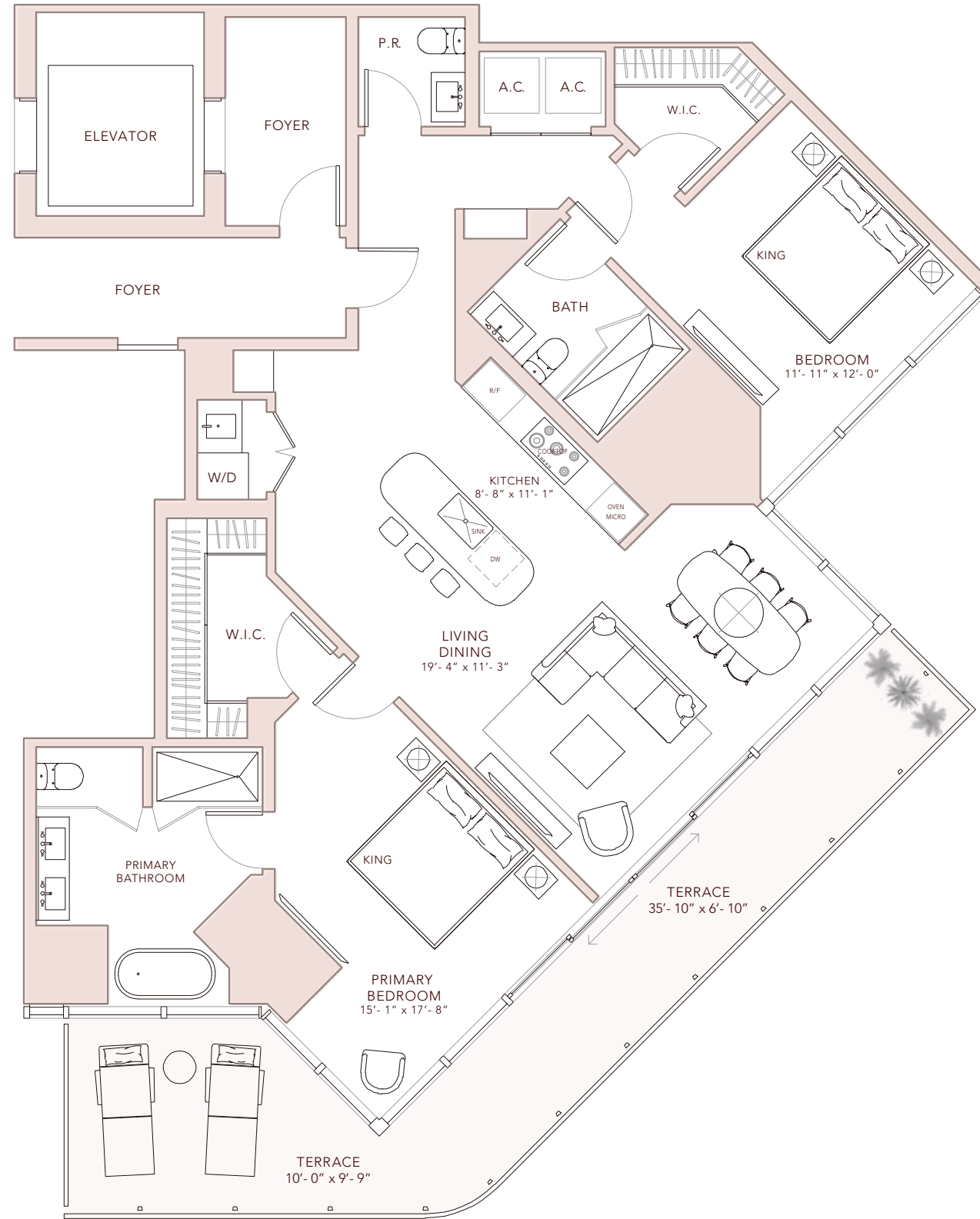
RIVER LOFTS
SOUTH
River Loft 2

LEVEL 3

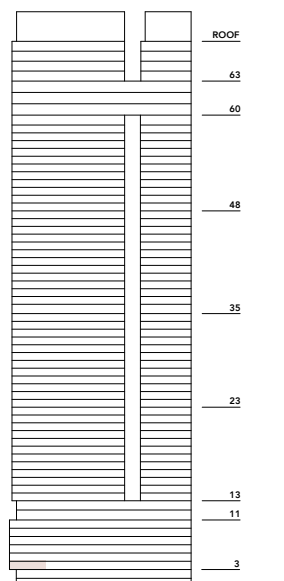
2 BEDROOMS
2 BATHROOMS
POWDER ROOM

INDOOR: 1,540 ft² 143 m²
OUTDOOR: 363 ft² 34 m²
TOTAL LIVING: 1,903 ft² 177 m²

**FAENA
RESIDENCES**
MIAMI



SOUTH TOWER EAST TOWER



ORAL REPRESENTATIONS CANNOT BE RELIED UPON AS CORRECTLY STATING THE REPRESENTATIONS OF THE DEVELOPER. FOR CORRECT REPRESENTATIONS, MAKE REFERENCE TO THIS BROCHURE AND TO THE DOCUMENTS REQUIRED BY SECTION 718.503, FLORIDA STATUTES, TO BE FURNISHED BY A DEVELOPER TO A BUYER OR LESSEE. This Condominium is being developed by FRM Associates LLC, a Florida limited liability company (the "Developer"). Neither Fortune International Group, KAR Properties nor Faena are the Developer. This is not intended to be an offer to sell, or solicitation to buy, condominium units to residents of any jurisdiction where prohibited by law, and your eligibility for purchase will depend upon your state of residency. This offering is made only by the prospectus for the condominium and no statement should be relied upon if not made in the prospectus. These materials should not be relied upon as representations, express or implied, of the final detail of the residences or the Condominium. All stated dimensions and ceiling heights are approximate and all floor plans and development plans are subject to change. Stated interior square footage is measured to the exterior face of exterior walls and to the centerline of interior demising walls or to the exterior face of walls adjoining corridors or other common elements or shared facilities without excluding areas that may be occupied by columns or other structural components. This method of measurement varies from, and is larger than, the dimensions that would be determined by using the description and the definition of the Unit set forth in the Declaration (which generally only includes the interior airspace between the perimeter walls and excludes structural components). For reference, the area of the unit, determined in accordance with the unit boundaries set forth in the Declaration is set forth in Exhibit "3" to the Declaration.

DEVELOPED BY

**FORTUNE
INTERNATIONAL
GROUP**

**KAR
PROPERTIES**

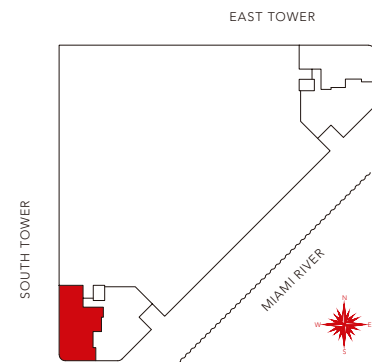
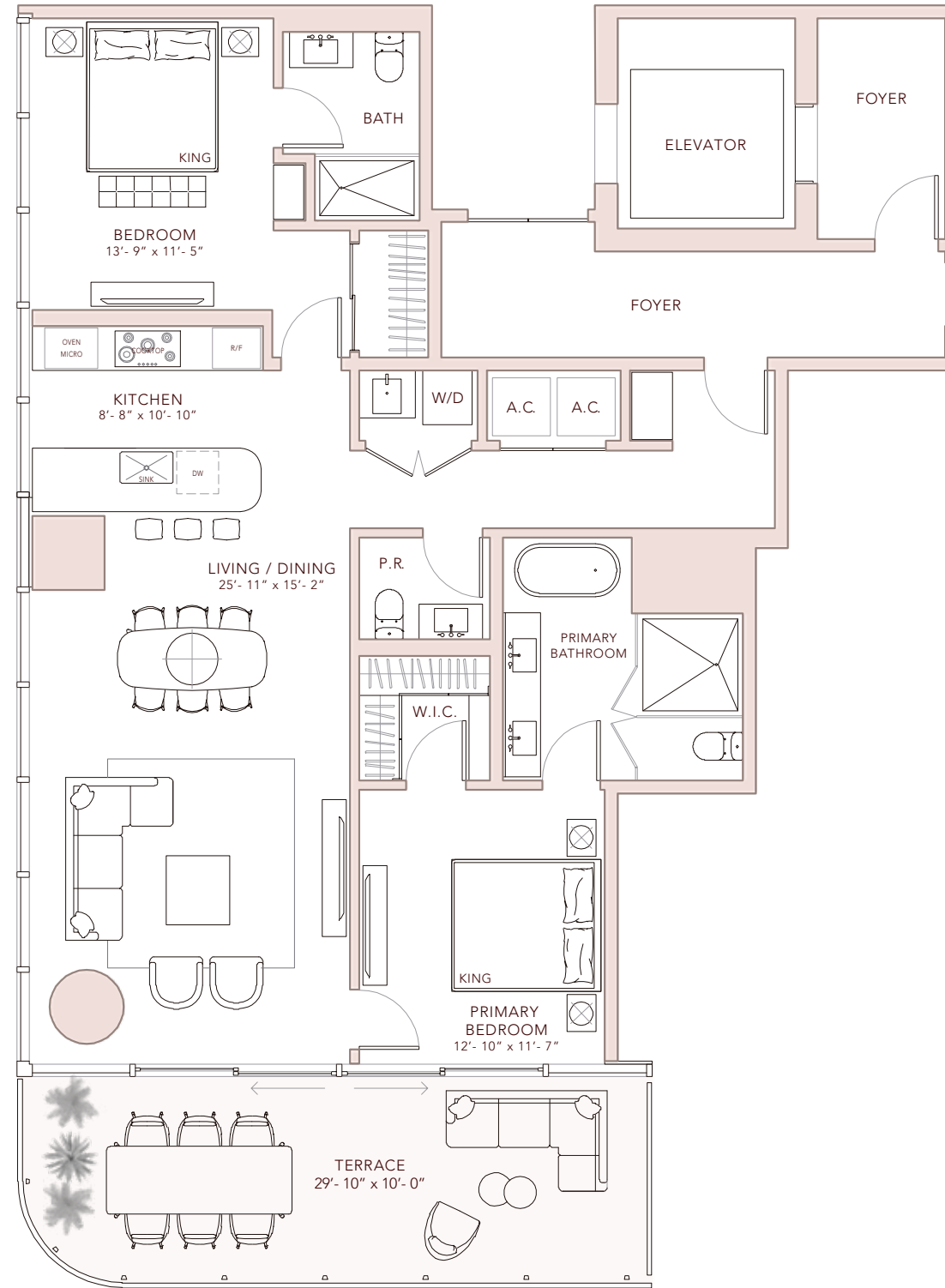
LEVEL 3 C

RIVER LOFTS
SOUTH
River Loft 1

LEVEL 3

2 BEDROOMS
2 BATHROOMS
POWDER ROOM

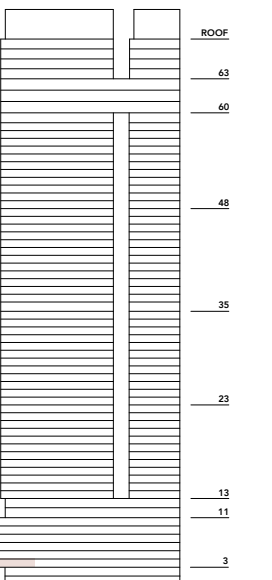
INDOOR: 1,429 ft² 133 m²
OUTDOOR: 292 ft² 27 m²
TOTAL LIVING: 1,721 ft² 160 m²



**FAENA
RESIDENCES**
MIAMI

MIAMI

SOUTH TOWER EAST TOWER



ORAL REPRESENTATIONS CANNOT BE RELIED UPON AS CORRECTLY STATING THE REPRESENTATIONS OF THE DEVELOPER. FOR CORRECT REPRESENTATIONS, MAKE REFERENCE TO THIS BROCHURE AND TO THE DOCUMENTS REQUIRED BY SECTION 718.503, FLORIDA STATUTES, TO BE FURNISHED BY A DEVELOPER TO A BUYER OR LESSEE. This Condominium is being developed by FRM Associates LLC, a Florida limited liability company (the "Developer"). Neither Fortune International Group, KAR Properties nor Faena are the Developer. This is not intended to be an offer to sell, or solicitation to buy, condominium units to residents of any jurisdiction where prohibited by law, and your eligibility for purchase will depend upon your state of residency. This offering is made only by the prospectus for the condominium and no statement should be relied upon if not made in the prospectus. These materials should not be relied upon as representations, express or implied, of the final detail of the residences or the Condominium. All stated dimensions and ceiling heights are approximate and all floor plans and development plans are subject to change. Stated interior square footage is measured to the exterior face of exterior walls and to the centerline of interior demising walls or to the exterior face of walls adjoining corridors or other common elements or shared facilities without excluding areas that may be occupied by columns or other structural components. This method of measurement varies from, and is larger than, the dimensions that would be determined by using the description and the definition of the Unit set forth in the Declaration (which generally only includes the interior airspace between the perimeter walls and excludes structural components). For reference, the area of the unit, determined in accordance with the unit boundaries set forth in the Declaration is set forth in Exhibit "3" to the Declaration.

DEVELOPED BY

**FORTUNE
INTERNATIONAL
GROUP**

**KAR
PROPERTIES**

LEVEL 3

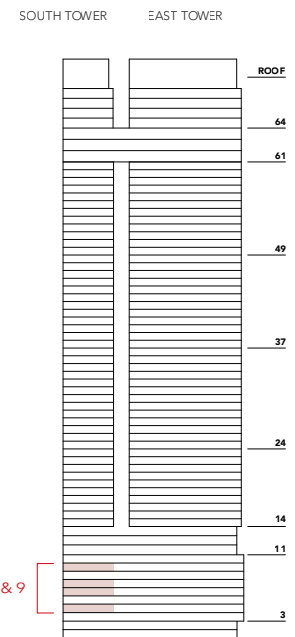
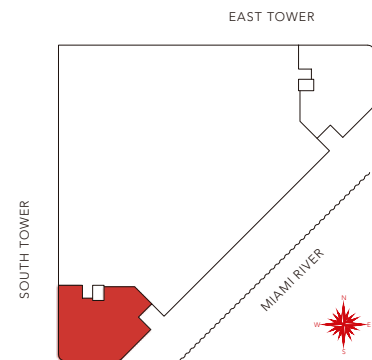
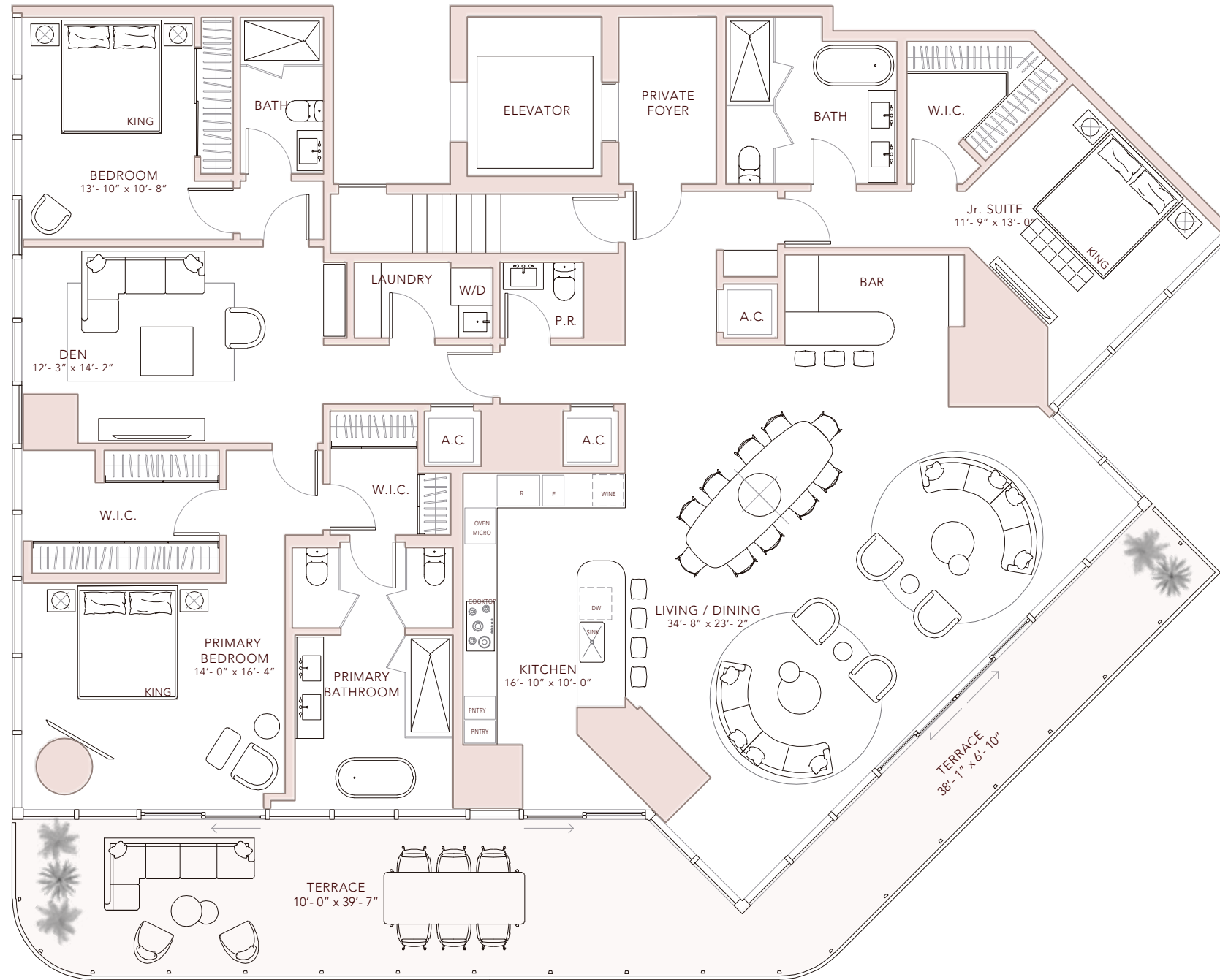
RIVER LOFTS
SOUTH
River Loft 3A

LEVELS 4, 6-7 & 9

3 BEDROOMS + DEN
3 BATHROOMS
POWDER ROOM

INDOOR: 3,200 ft² 297 m²
OUTDOOR: 655 ft² 61 m²
TOTAL LIVING: 3,855 ft² 358 m²

**FAENA
RESIDENCES**
MIAMI



ORAL REPRESENTATIONS CANNOT BE RELIED UPON AS CORRECTLY STATING THE REPRESENTATIONS OF THE DEVELOPER. FOR CORRECT REPRESENTATIONS, MAKE REFERENCE TO THIS BROCHURE AND TO THE DOCUMENTS REQUIRED BY SECTION 718.503, FLORIDA STATUTES, TO BE FURNISHED BY A DEVELOPER TO A BUYER OR LESSEE. This Condominium is being developed by FRM Associates LLC, a Florida limited liability company (the "Developer"). Neither Fortune International Group, KAR Properties nor Faena are the Developer. This is not intended to be an offer to sell, or solicitation to buy, condominium units to residents of any jurisdiction where prohibited by law, and your eligibility for purchase will depend upon your state of residency. This offering is made only by the prospectus for the condominium and no statement should be relied upon if not made in the prospectus. These materials should not be relied upon as representations, express or implied, of the final detail of the residences or the Condominium. All stated dimensions and ceiling heights are approximate and all floor plans and development plans are subject to change. Stated interior square footage is measured to the exterior face of exterior walls and to the centerline of interior demising walls or to the exterior face of walls adjoining corridors or other common elements or shared facilities without excluding areas that may be occupied by columns or other structural components. This method of measurement varies from, and is larger than, the dimensions that would be determined by using the description and the definition of the Unit set forth in the Declaration (which generally only includes the interior airspace between the perimeter walls and excludes structural components). For reference, the area of the unit, determined in accordance with the unit boundaries set forth in the Declaration is set forth in Exhibit "3" to the Declaration.

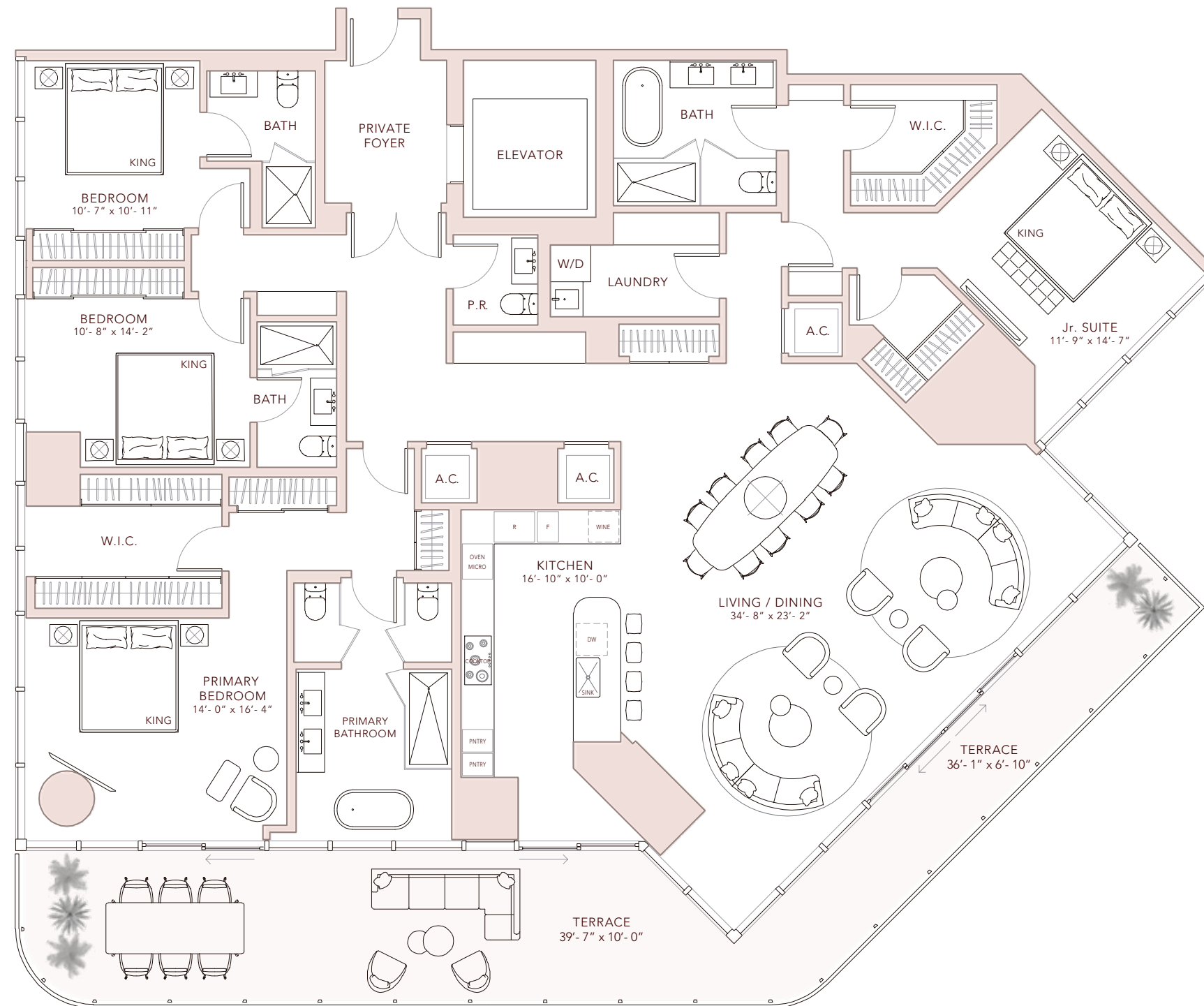
DEVELOPED BY
FORTUNE INTERNATIONAL GROUP
KAR PROPERTIES LEVELS 4-6-7 & 9

RIVER LOFTS
SOUTH
River Loft 3B

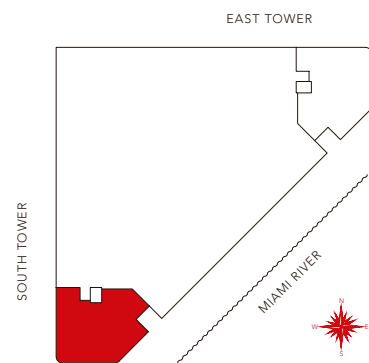
LEVEL 10

4 BEDROOMS
4 BATHROOMS
POWDER ROOM

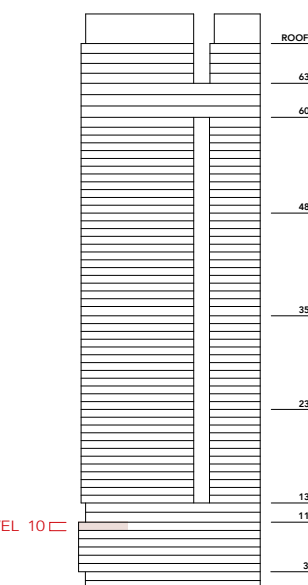
INDOOR: 3,304 ft² 307 m²
OUTDOOR: 655 ft² 61 m²
TOTAL LIVING: 3,959 ft² 368 m²



**FAENA
RESIDENCES**
MIAMI



SOUTH TOWER EAST TOWER



ORAL REPRESENTATIONS CANNOT BE RELIED UPON AS CORRECTLY STATING THE REPRESENTATIONS OF THE DEVELOPER. FOR CORRECT REPRESENTATIONS, MAKE REFERENCE TO THIS BROCHURE AND TO THE DOCUMENTS REQUIRED BY SECTION 718.503, FLORIDA STATUTES, TO BE FURNISHED BY A DEVELOPER TO A BUYER OR LESSEE. This Condominium is being developed by FRM Associates LLC, a Florida limited liability company (the "Developer"). Neither Fortune International Group, KAR Properties nor Faena are the Developer. This is not intended to be an offer to sell, or solicitation to buy, condominium units to residents of any jurisdiction where prohibited by law, and your eligibility for purchase will depend upon your state of residency. This offering is made only by the prospectus for the condominium and no statement should be relied upon if not made in the prospectus. These materials should not be relied upon as representations, express or implied, of the final detail of the residences or the Condominium. All stated dimensions and ceiling heights are approximate and all floor plans and development plans are subject to change. Stated interior square footage is measured to the exterior face of exterior walls and to the centerline of interior demising walls or to the exterior face of walls adjoining corridors or other common elements or shared facilities without excluding areas that may be occupied by columns or other structural components. This method of measurement varies from, and is larger than, the dimensions that would be determined by using the description and the definition of the Unit set forth in the Declaration (which generally only includes the interior airspace between the perimeter walls and excludes structural components). For reference, the area of the unit, determined in accordance with the unit boundaries set forth in the Declaration is set forth in Exhibit "3" to the Declaration.

DEVELOPED BY
**FORTUNE
INTERNATIONAL
GROUP**



LEVEL 10