

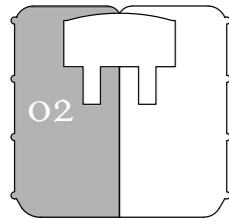


ST REGIS
SUNNY ISLES BEACH ♦ MIAMI
THE RESIDENCES

Residence 02

North Tower / Level 8

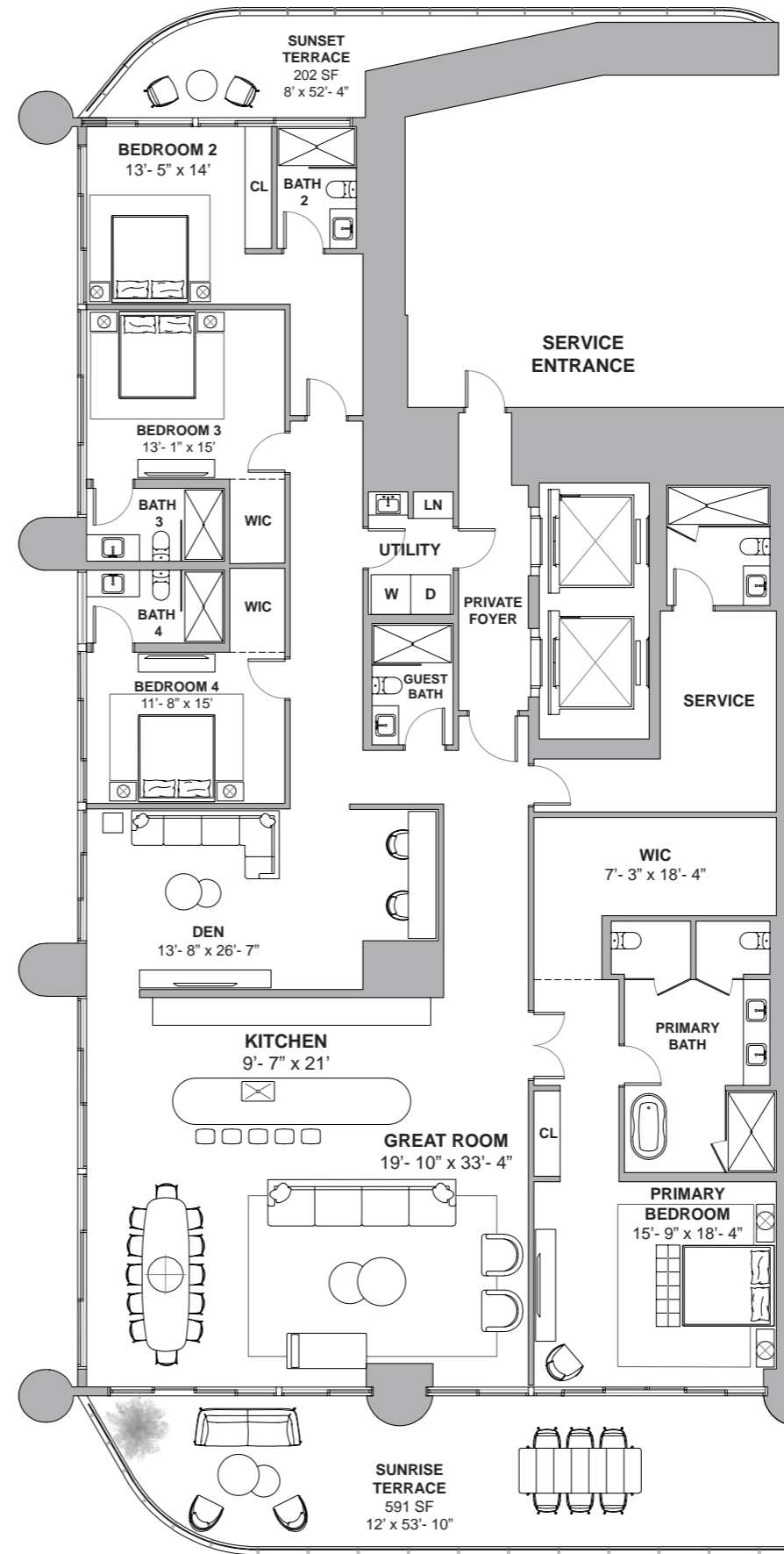
4 BEDROOMS + DEN
6 BATHROOMS
4,434 SF / 412 SM INTERIOR
793 SF / 74 SM EXTERIOR
5,227 SF / 486 SM TOTAL



Atlantic Ocean

18801 Collins Ave, Sunny Isles Beach, FL 33160

Collins Ave / AIA



Atlantic Ocean

DEVELOPMENT AND SALES

FORTUNE
INTERNATIONAL
GROUP

CHATEAU
GROUP

The St. Regis Residences, Sunny Isles Beach are not owned, developed or sold by Marriott International, Inc. or its affiliates ("MI"). La Playa Beach Associates, LLC uses the St. Regis marks under a license from MI, which has not confirmed the accuracy of any of the statements or representations made herein. This project is being developed by La Playa Beach Associates, LLC, which has the right to use the trademark names and logos of Fortune International Group and Chateau Group. ORAL REPRESENTATIONS CANNOT BE RELIED UPON AS CORRECTLY STATING THE REPRESENTATIONS OF THE DEVELOPER. FOR CORRECT REPRESENTATIONS, MAKE REFERENCE TO THIS BROCHURE AND TO THE DOCUMENTS REQUIRED BY SECTION 718.503, FLORIDA STATUTES, TO BE FURNISHED BY A DEVELOPER TO A BUYER OR LESSEE. This is not intended to be an offer to sell, or solicitation to buy, condominium units to residents of any jurisdiction where prohibited by law, and your eligibility for purchase will depend upon your state of residency. Stated dimensions are measured to the exterior boundaries of the exterior walls and the centerline of interior demising walls and in fact vary from the dimensions that would be determined by using the description and definition of the "Unit" set forth in the Declaration (which generally only includes the interior airspace between the perimeter walls and excludes interior structural components). For your reference, the area of the Unit, determined in accordance with those defined unit boundaries, is set forth on Exhibit "3" to the Declaration. Note that measurements of rooms set forth on this floor plan are generally taken at the greatest points of each given room (as if the room were a perfect rectangle), without regard for any cutouts. Accordingly, the area of the actual room will typically be smaller than the product obtained by multiplying the stated length times width. All dimensions are approximate and may vary with actual construction, and all floor plans and development plans are subject to change. Furniture is not included with the sale of the Units.



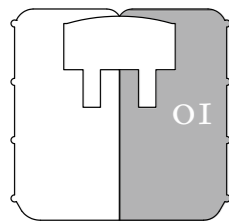
ST REGIS
SUNNY ISLES BEACH ♦ MIAMI
THE RESIDENCES

Collins Ave / AIA

Residence 01

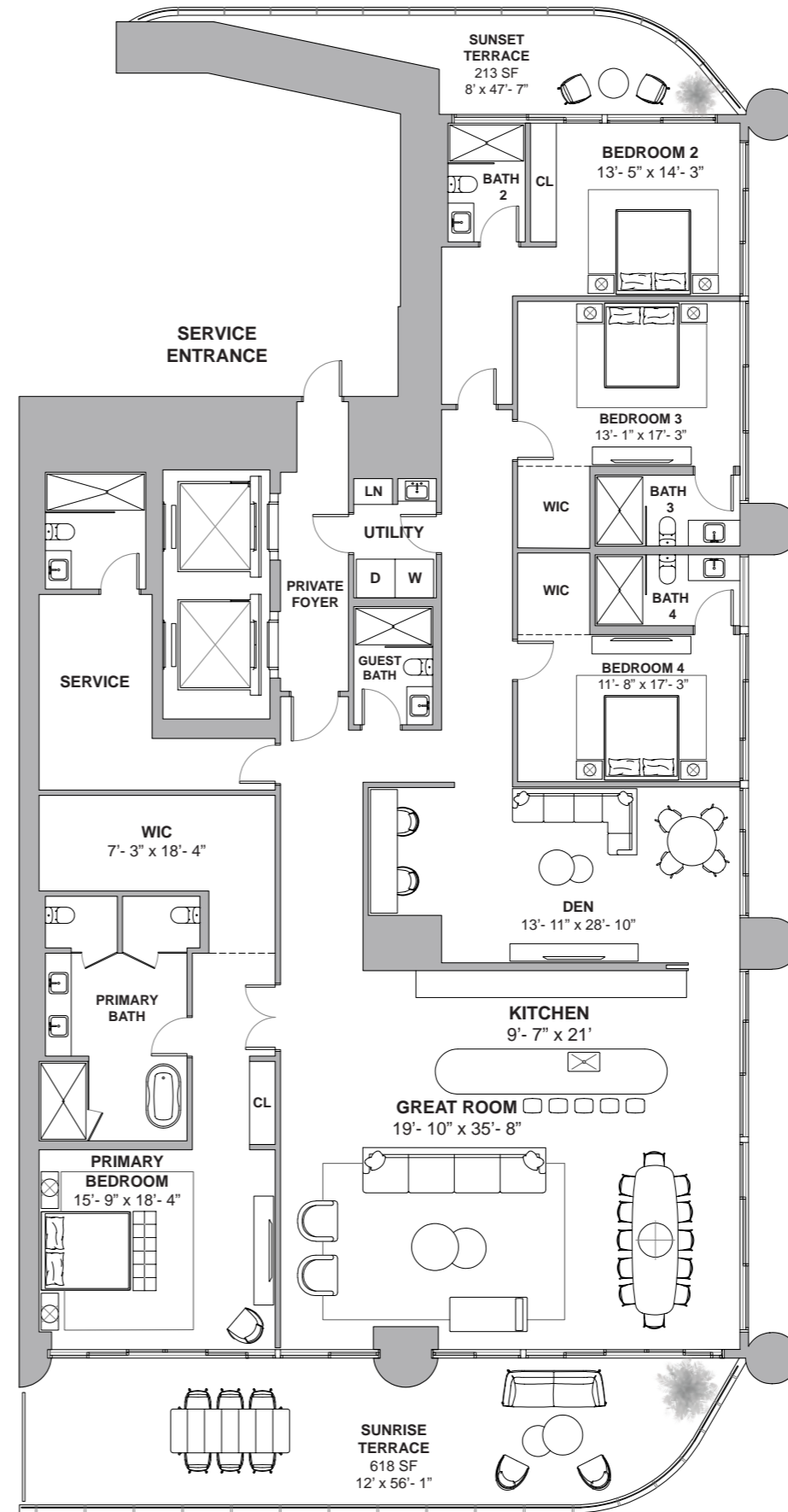
North Tower / Level 9

4 BEDROOMS + DEN
6 BATHROOMS
4,647 SF / 432 SM INTERIOR
831 SF / 77 SM EXTERIOR
5,478 SF / 509 SM TOTAL



Atlantic Ocean

18801 Collins Ave, Sunny Isles Beach, FL 33160



Atlantic Ocean

DEVELOPMENT AND SALES
FORTUNE INTERNATIONAL GROUP | **CHÂTEAU GROUP**

The St. Regis Residences, Sunny Isles Beach are not owned, developed or sold by Marriott International, Inc. or its affiliates ("MI"). La Playa Beach Associates, LLC uses the St. Regis marks under a license from MI, which has not confirmed the accuracy of any of the statements or representations made herein. This project is being developed by La Playa Beach Associates, LLC, which has the right to use the trademark names and logos of Fortune International Group and Chateau Group. ORAL REPRESENTATIONS CANNOT BE RELIED UPON AS CORRECTLY STATING THE REPRESENTATIONS OF THE DEVELOPER. FOR CORRECT REPRESENTATIONS, MAKE REFERENCE TO THIS BROCHURE AND TO THE DOCUMENTS REQUIRED BY SECTION 718.503, FLORIDA STATUTES, TO BE FURNISHED BY A DEVELOPER TO A BUYER OR LESSEE. This is not intended to be an offer to sell, or solicitation to buy, condominium units to residents of any jurisdiction where prohibited by law, and your eligibility for purchase will depend upon your state of residency. Stated dimensions are measured to the exterior boundaries of the exterior walls and the centerline of interior demising walls and in fact vary from the dimensions that would be determined by using the description and definition of the "Unit" set forth in the Declaration (which generally only includes the interior airspace between the perimeter walls and excludes interior structural components). For your reference, the area of the Unit, determined in accordance with those defined unit boundaries, is set forth on Exhibit "3" to the Declaration. Note that measurements of rooms set forth on this floor plan are generally taken at the greatest points of each given room (as if the room were a perfect rectangle), without regard for any cutouts. Accordingly, the area of the actual room will typically be smaller than the product obtained by multiplying the stated length times width. All dimensions are approximate and may vary with actual construction, and all floor plans and development plans are subject to change. Furniture is not included with the sale of the Units.



ST REGIS
SUNNY ISLES BEACH ♦ MIAMI
THE RESIDENCES

Collins Ave / AIA

Residence 02

North Tower / Level 9

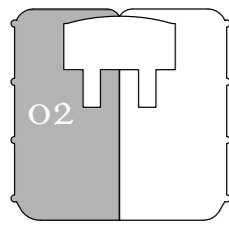
4 BEDROOMS + DEN

6 BATHROOMS

4,653 SF / 432 SM INTERIOR

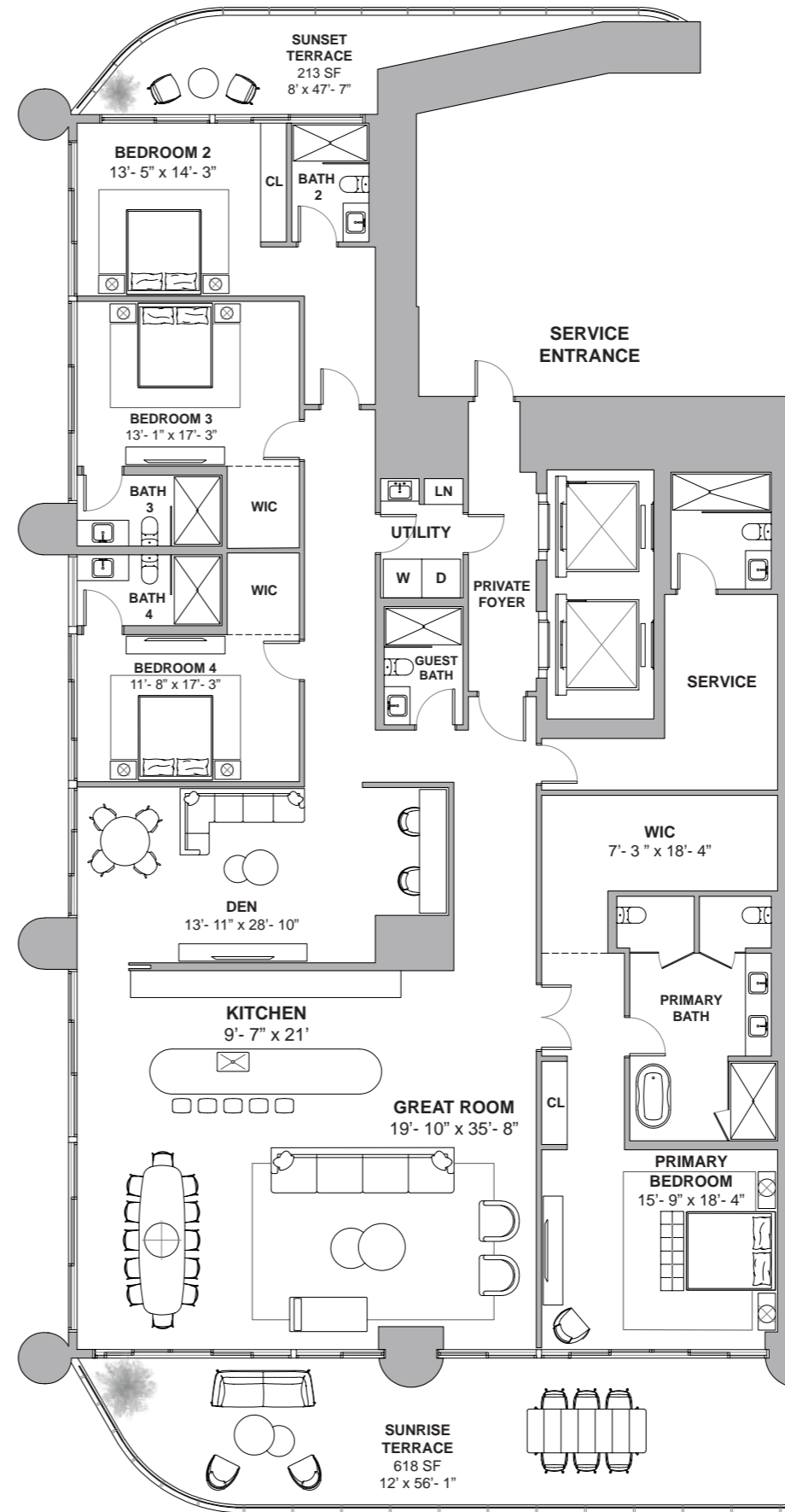
831 SF / 77 SM EXTERIOR

5,484 SF / 509 SM TOTAL



Atlantic Ocean

18801 Collins Ave, Sunny Isles Beach, FL 33160



Atlantic Ocean

DEVELOPMENT AND SALES

FORTUNE
INTERNATIONAL
GROUP

CHATEAU
GROUP

The St. Regis Residences, Sunny Isles Beach are not owned, developed or sold by Marriott International, Inc. or its affiliates ("MI"). La Playa Beach Associates, LLC uses the St. Regis marks under a license from MI, which has not confirmed the accuracy of any of the statements or representations made herein. This project is being developed by La Playa Beach Associates, LLC, which has the right to use the trademark names and logos of Fortune International Group and Chateau Group. ORAL REPRESENTATIONS CANNOT BE RELIED UPON AS CORRECTLY STATING THE REPRESENTATIONS OF THE DEVELOPER. FOR CORRECT REPRESENTATIONS, MAKE REFERENCE TO THIS BROCHURE AND TO THE DOCUMENTS REQUIRED BY SECTION 718.503, FLORIDA STATUTES, TO BE FURNISHED BY A DEVELOPER TO A BUYER OR LESSEE. This is not intended to be an offer to sell, or solicitation to buy, condominium units to residents of any jurisdiction where prohibited by law, and your eligibility for purchase will depend upon your state of residency. Stated dimensions are measured to the exterior boundaries of the exterior walls and the centerline of interior demising walls and in fact vary from the dimensions that would be determined by using the description and definition of the "Unit" set forth in the Declaration (which generally only includes the interior airspace between the perimeter walls and excludes interior structural components). For your reference, the area of the Unit, determined in accordance with those defined unit boundaries, is set forth on Exhibit "3" to the Declaration. Note that measurements of rooms set forth on this floor plan are generally taken at the greatest points of each given room (as if the room were a perfect rectangle), without regard for any cutouts. Accordingly, the area of the actual room will typically be smaller than the product obtained by multiplying the stated length times width. All dimensions are approximate and may vary with actual construction, and all floor plans and development plans are subject to change. Furniture is not included with the sale of the Units.

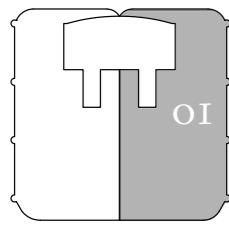


ST REGIS
SUNNY ISLES BEACH ♦ MIAMI
THE RESIDENCES

Residence 01

North Tower / Level 10

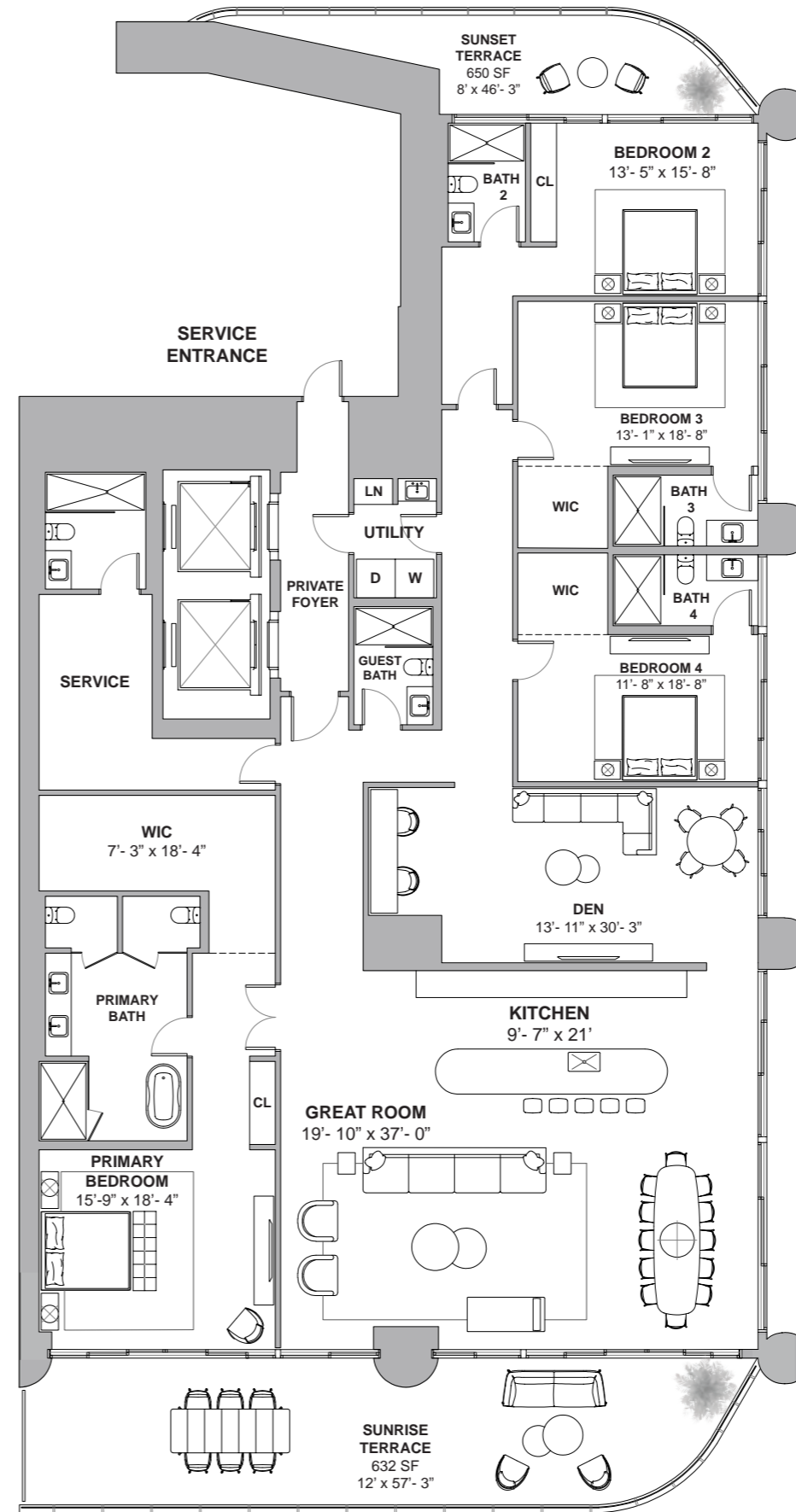
4 BEDROOMS + DEN
6 BATHROOMS
4,908 SF / 456 SM INTERIOR
882 SF / 82 SM EXTERIOR
5,790 SF / 538 SM TOTAL



Atlantic Ocean

18801 Collins Ave, Sunny Isles Beach, FL 33160

Collins Ave / AIA



Atlantic Ocean

DEVELOPMENT AND SALES
FORTUNE INTERNATIONAL GROUP | **CHÂTEAU GROUP**

The St. Regis Residences, Sunny Isles Beach are not owned, developed or sold by Marriott International, Inc. or its affiliates ("MI"). La Playa Beach Associates, LLC uses the St. Regis marks under a license from MI, which has not confirmed the accuracy of any of the statements or representations made herein. This project is being developed by La Playa Beach Associates, LLC, which has the right to use the trademark names and logos of Fortune International Group and Chateau Group. ORAL REPRESENTATIONS CANNOT BE RELIED UPON AS CORRECTLY STATING THE REPRESENTATIONS OF THE DEVELOPER. FOR CORRECT REPRESENTATIONS, MAKE REFERENCE TO THIS BROCHURE AND TO THE DOCUMENTS REQUIRED BY SECTION 718.503, FLORIDA STATUTES, TO BE FURNISHED BY A DEVELOPER TO A BUYER OR LESSEE. This is not intended to be an offer to sell, or solicitation to buy, condominium units to residents of any jurisdiction where prohibited by law, and your eligibility for purchase will depend upon your state of residency. Stated dimensions are measured to the exterior boundaries of the exterior walls and the centerline of interior demising walls and in fact vary from the dimensions that would be determined by using the description and definition of the "Unit" set forth in the Declaration (which generally only includes the interior airspace between the perimeter walls and excludes interior structural components). For your reference, the area of the Unit, determined in accordance with those defined unit boundaries, is set forth on Exhibit "3" to the Declaration. Note that measurements of rooms set forth on this floor plan are generally taken at the greatest points of each given room (as if the room were a perfect rectangle), without regard for any cutouts. Accordingly, the area of the actual room will typically be smaller than the product obtained by multiplying the stated length times width. All dimensions are approximate and may vary with actual construction, and all floor plans and development plans are subject to change. Furniture is not included with the sale of the Units.



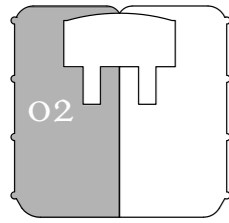
ST REGIS
SUNNY ISLES BEACH ♦ MIAMI
THE RESIDENCES

Collins Ave / AIA

Residence 02

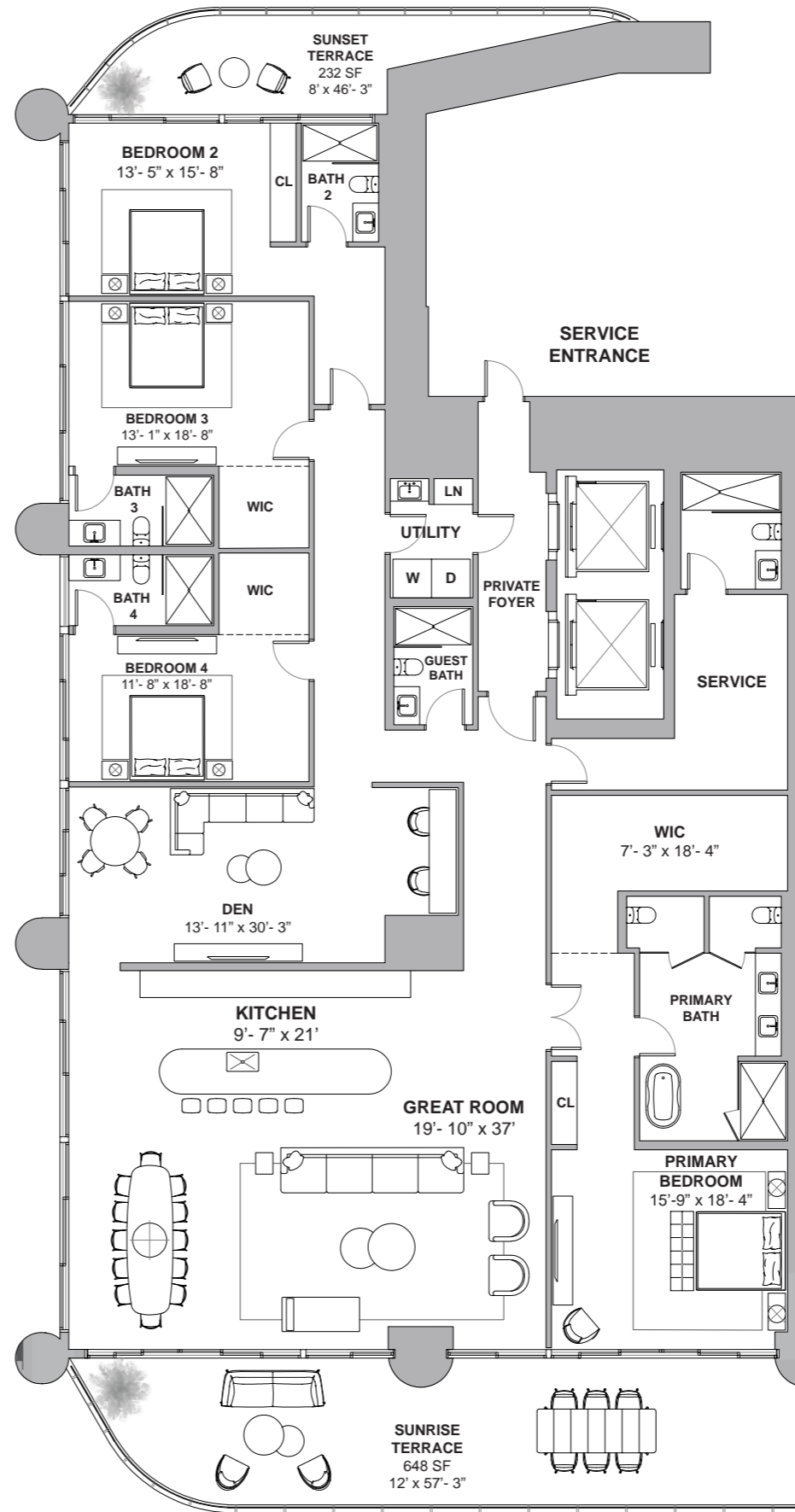
North Tower / Level 10

4 BEDROOMS + DEN
6 BATHROOMS
4,892 SF / 454 SM INTERIOR
880 SF / 82 SM EXTERIOR
5,772 SF / 536 SM TOTAL



Atlantic Ocean

18801 Collins Ave, Sunny Isles Beach, FL 33160



Atlantic Ocean

DEVELOPMENT AND SALES

FORTUNE
INTERNATIONAL
GROUP

CHATEAU
GROUP

The St. Regis Residences, Sunny Isles Beach are not owned, developed or sold by Marriott International, Inc. or its affiliates ("MI"). La Playa Beach Associates, LLC uses the St. Regis marks under a license from MI, which has not confirmed the accuracy of any of the statements or representations made herein. This project is being developed by La Playa Beach Associates, LLC, which has the right to use the trademark names and logos of Fortune International Group and Chateau Group. ORAL REPRESENTATIONS CANNOT BE RELIED UPON AS CORRECTLY STATING THE REPRESENTATIONS OF THE DEVELOPER. FOR CORRECT REPRESENTATIONS, MAKE REFERENCE TO THIS BROCHURE AND TO THE DOCUMENTS REQUIRED BY SECTION 718.503, FLORIDA STATUTES, TO BE FURNISHED BY A DEVELOPER TO A BUYER OR LESSEE. This is not intended to be an offer to sell, or solicitation to buy, condominium units to residents of any jurisdiction where prohibited by law, and your eligibility for purchase will depend upon your state of residency. Stated dimensions are measured to the exterior boundaries of the exterior walls and the centerline of interior demising walls and in fact vary from the dimensions that would be determined by using the description and definition of the "Unit" set forth in the Declaration (which generally only includes the interior airspace between the perimeter walls and excludes interior structural components). For your reference, the area of the Unit, determined in accordance with those defined unit boundaries, is set forth on Exhibit "3" to the Declaration. Note that measurements of rooms set forth on this floor plan are generally taken at the greatest points of each given room (as if the room were a perfect rectangle), without regard for any cutouts. Accordingly, the area of the actual room will typically be smaller than the product obtained by multiplying the stated length times width. All dimensions are approximate and may vary with actual construction, and all floor plans and development plans are subject to change. Furniture is not included with the sale of the Units.

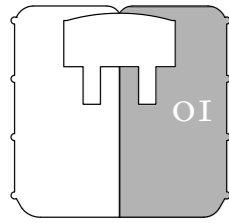


ST REGIS
SUNNY ISLES BEACH ♦ MIAMI
THE RESIDENCES

Residence 01

North Tower / Level 11

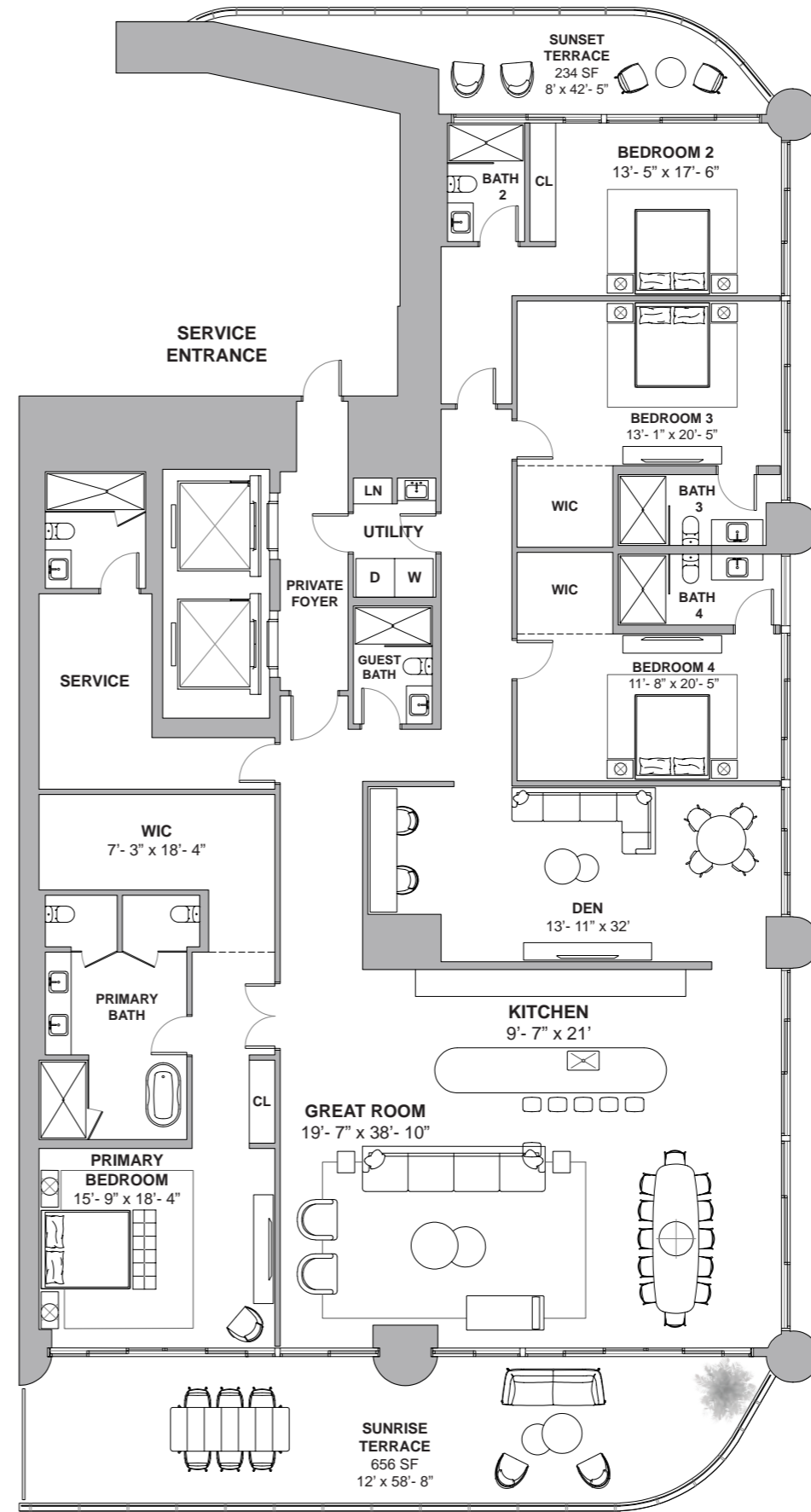
4 BEDROOMS + DEN
6 BATHROOMS
4,956 SF / 460 SM INTERIOR
890 SF / 83 SM EXTERIOR
5,846 SF / 543 SM TOTAL



Atlantic Ocean

18801 Collins Ave, Sunny Isles Beach, FL 33160

Collins Ave / AIA



Atlantic Ocean

DEVELOPMENT AND SALES

FORTUNE
INTERNATIONAL
GROUP

CHÂTEAU
GROUP

The St. Regis Residences, Sunny Isles Beach are not owned, developed or sold by Marriott International, Inc. or its affiliates ("MI"). La Playa Beach Associates, LLC uses the St. Regis marks under a license from MI, which has not confirmed the accuracy of any of the statements or representations made herein. This project is being developed by La Playa Beach Associates, LLC, which has the right to use the trademark names and logos of Fortune International Group and Chateau Group. ORAL REPRESENTATIONS CANNOT BE RELIED UPON AS CORRECTLY STATING THE REPRESENTATIONS OF THE DEVELOPER. FOR CORRECT REPRESENTATIONS, MAKE REFERENCE TO THIS BROCHURE AND TO THE DOCUMENTS REQUIRED BY SECTION 718.503, FLORIDA STATUTES, TO BE FURNISHED BY A DEVELOPER TO A BUYER OR LESSEE. This is not intended to be an offer to sell, or solicitation to buy, condominium units to residents of any jurisdiction where prohibited by law, and your eligibility for purchase will depend upon your state of residency. Stated dimensions are measured to the exterior boundaries of the exterior walls and the centerline of interior demising walls and in fact vary from the dimensions that would be determined by using the description and definition of the "Unit" set forth in the Declaration (which generally only includes the interior airspace between the perimeter walls and excludes interior structural components). For your reference, the area of the Unit, determined in accordance with those defined unit boundaries, is set forth on Exhibit "3" to the Declaration. Note that measurements of rooms set forth on this floor plan are generally taken at the greatest points of each given room (as if the room were a perfect rectangle), without regard for any cutouts. Accordingly, the area of the actual room will typically be smaller than the product obtained by multiplying the stated length times width. All dimensions are approximate and may vary with actual construction, and all floor plans and development plans are subject to change. Furniture is not included with the sale of the Units.



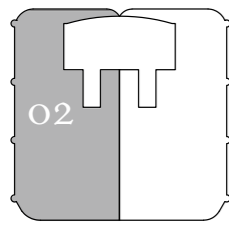
ST REGIS
SUNNY ISLES BEACH ♦ MIAMI
THE RESIDENCES

Collins Ave / AIA

Residence 02

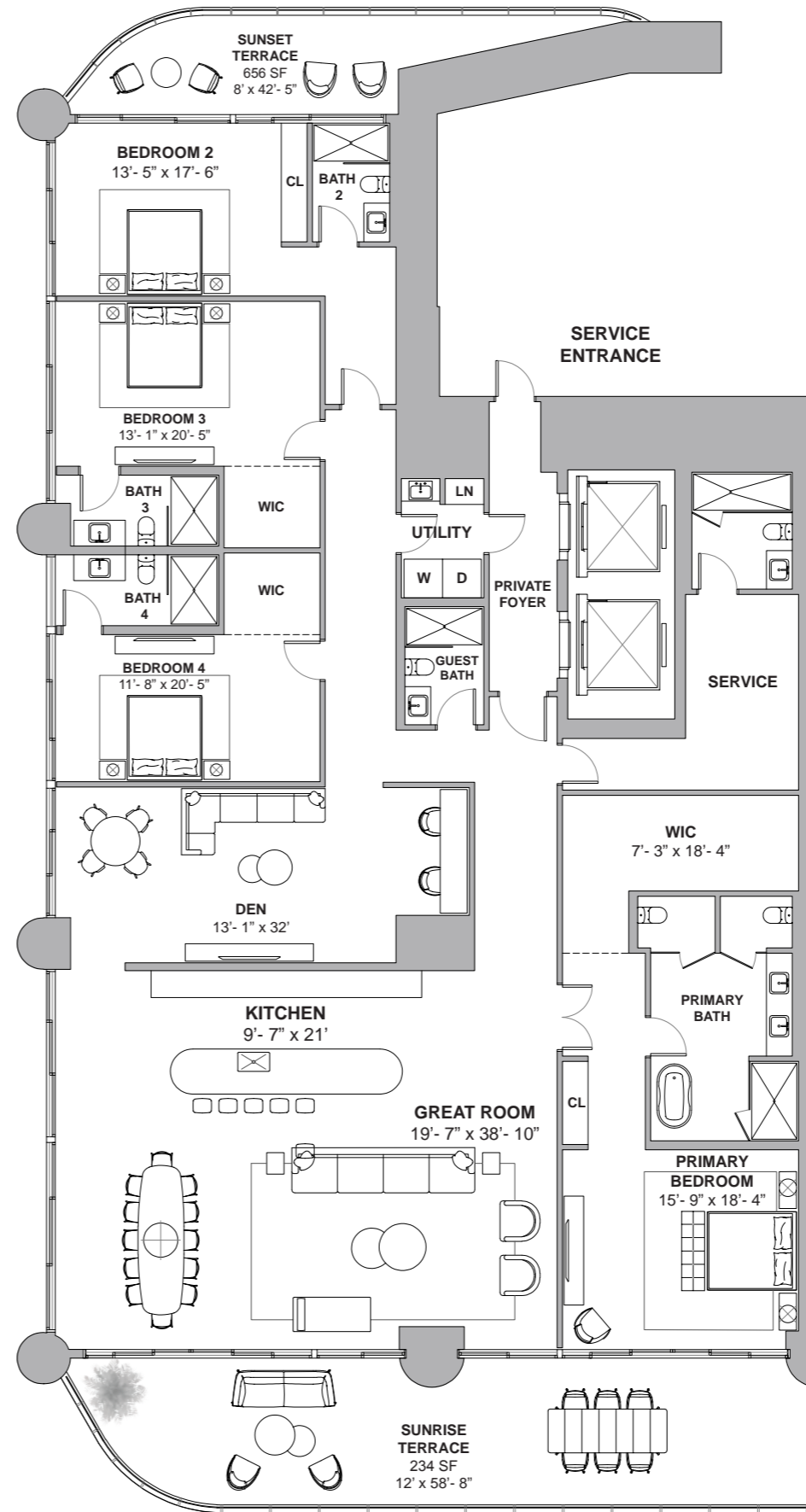
North Tower / Level 11

4 BEDROOMS + DEN
6 BATHROOMS
4,962 SF / 460 SM INTERIOR
890 SF / 83 SM EXTERIOR
5,852 SF / 544 SM TOTAL



Atlantic Ocean

18801 Collins Ave, Sunny Isles Beach, FL 33160



Atlantic Ocean

DEVELOPMENT AND SALES

FORTUNE
INTERNATIONAL
GROUP

CHATEAU
GROUP

The St. Regis Residences, Sunny Isles Beach are not owned, developed or sold by Marriott International, Inc. or its affiliates ("MI"). La Playa Beach Associates, LLC uses the St. Regis marks under a license from MI, which has not confirmed the accuracy of any of the statements or representations made herein. This project is being developed by La Playa Beach Associates, LLC, which has the right to use the trademark names and logos of Fortune International Group and Chateau Group. ORAL REPRESENTATIONS CANNOT BE RELIED UPON AS CORRECTLY STATING THE REPRESENTATIONS OF THE DEVELOPER. FOR CORRECT REPRESENTATIONS, MAKE REFERENCE TO THIS BROCHURE AND TO THE DOCUMENTS REQUIRED BY SECTION 718.503, FLORIDA STATUTES, TO BE FURNISHED BY A DEVELOPER TO A BUYER OR LESSEE. This is not intended to be an offer to sell, or solicitation to buy, condominium units to residents of any jurisdiction where prohibited by law, and your eligibility for purchase will depend upon your state of residency. Stated dimensions are measured to the exterior boundaries of the exterior walls and the centerline of interior demising walls and in fact vary from the dimensions that would be determined by using the description and definition of the "Unit" set forth in the Declaration (which generally only includes the interior airspace between the perimeter walls and excludes interior structural components). For your reference, the area of the Unit, determined in accordance with those defined unit boundaries, is set forth on Exhibit "3" to the Declaration. Note that measurements of rooms set forth on this floor plan are generally taken at the greatest points of each given room (as if the room were a perfect rectangle), without regard for any cutouts. Accordingly, the area of the actual room will typically be smaller than the product obtained by multiplying the stated length times width. All dimensions are approximate and may vary with actual construction, and all floor plans and development plans are subject to change. Furniture is not included with the sale of the Units.



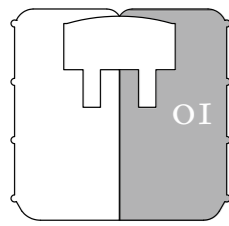
ST REGIS
SUNNY ISLES BEACH ♦ MIAMI
THE RESIDENCES

Collins Ave / AIA

Residence 01

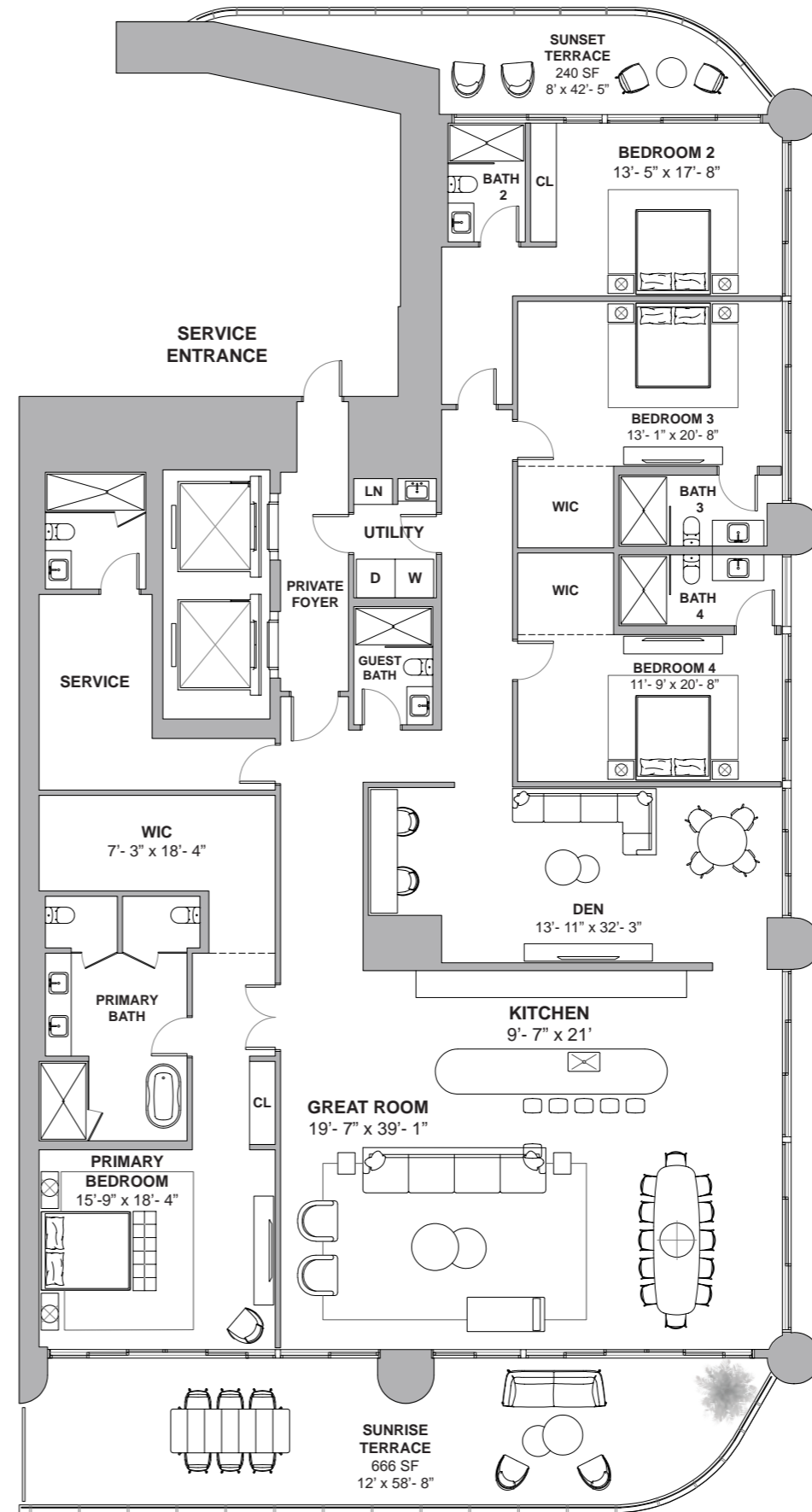
North Tower / Level 12

4 BEDROOMS + DEN
6 BATHROOMS
5,040 SF / 468 SM INTERIOR
906 SF / 84 SM EXTERIOR
5,946 SF / 552 SM TOTAL



Atlantic Ocean

18801 Collins Ave, Sunny Isles Beach, FL 33160



Atlantic Ocean

DEVELOPMENT AND SALES
FORTUNE INTERNATIONAL GROUP | **CHÂTEAU GROUP**

The St. Regis Residences, Sunny Isles Beach are not owned, developed or sold by Marriott International, Inc. or its affiliates ("MI"). La Playa Beach Associates, LLC uses the St. Regis marks under a license from MI, which has not confirmed the accuracy of any of the statements or representations made herein. This project is being developed by La Playa Beach Associates, LLC, which has the right to use the trademark names and logos of Fortune International Group and Chateau Group. ORAL REPRESENTATIONS CANNOT BE RELIED UPON AS CORRECTLY STATING THE REPRESENTATIONS OF THE DEVELOPER. FOR CORRECT REPRESENTATIONS, MAKE REFERENCE TO THIS BROCHURE AND TO THE DOCUMENTS REQUIRED BY SECTION 718.503, FLORIDA STATUTES, TO BE FURNISHED BY A DEVELOPER TO A BUYER OR LESSEE. This is not intended to be an offer to sell, or solicitation to buy, condominium units to residents of any jurisdiction where prohibited by law, and your eligibility for purchase will depend upon your state of residency. Stated dimensions are measured to the exterior boundaries of the exterior walls and the centerline of interior demising walls and in fact vary from the dimensions that would be determined by using the description and definition of the "Unit" set forth in the Declaration (which generally only includes the interior airspace between the perimeter walls and excludes interior structural components). For your reference, the area of the Unit, determined in accordance with those defined unit boundaries, is set forth on Exhibit "3" to the Declaration. Note that measurements of rooms set forth on this floor plan are generally taken at the greatest points of each given room (as if the room were a perfect rectangle), without regard for any cutouts. Accordingly, the area of the actual room will typically be smaller than the product obtained by multiplying the stated length times width. All dimensions are approximate and may vary with actual construction, and all floor plans and development plans are subject to change. Furniture is not included with the sale of the Units.

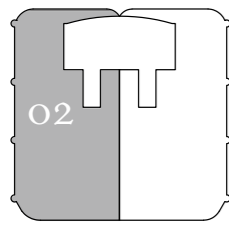


ST REGIS
SUNNY ISLES BEACH ♦ MIAMI
THE RESIDENCES

Residence 02

North Tower / Level 12

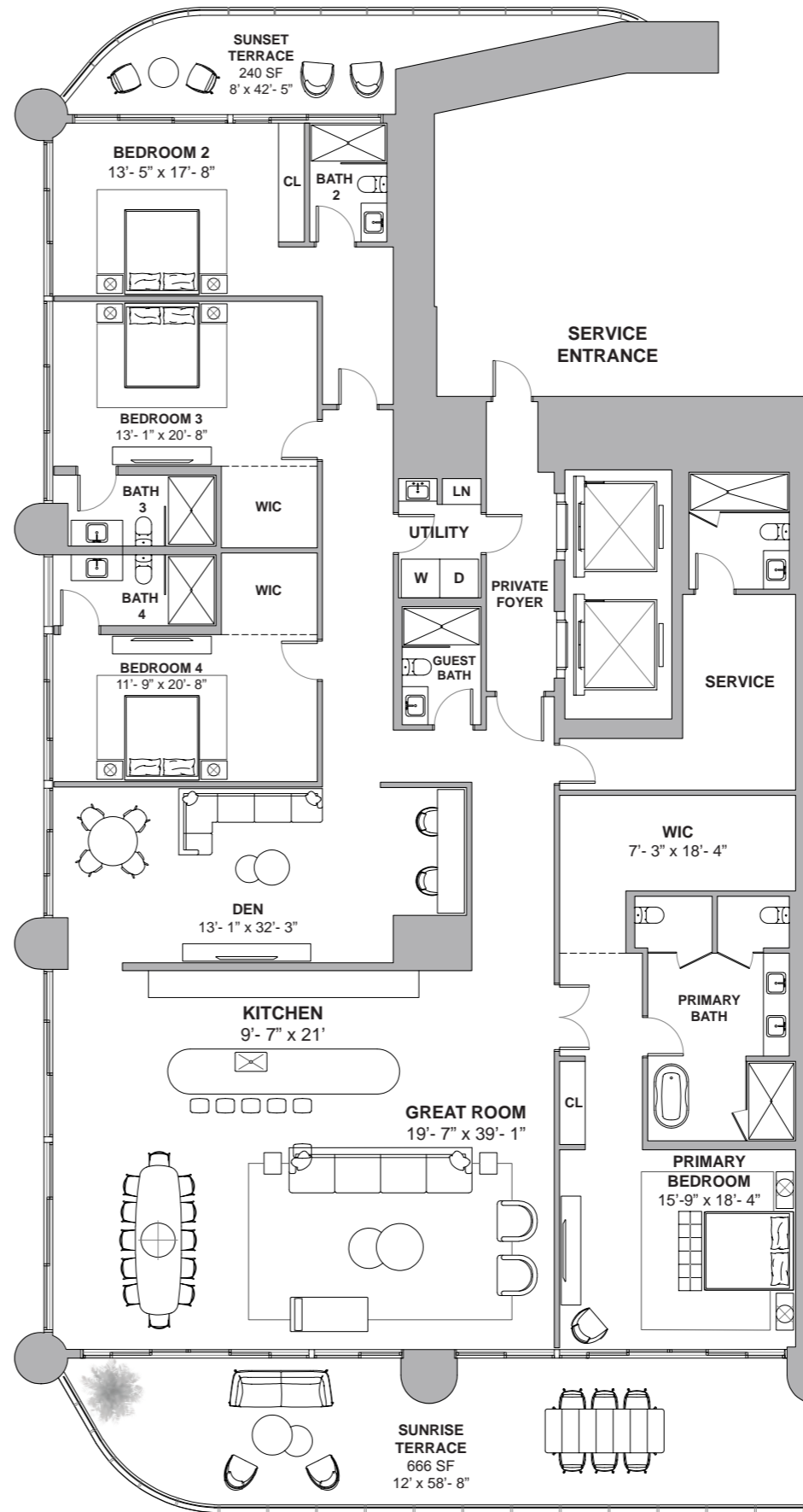
4 BEDROOMS + DEN
6 BATHROOMS
5,040 SF / 468 SM INTERIOR
906 SF / 84 SM EXTERIOR
5,946 SF / 552 SM TOTAL



Atlantic Ocean

18801 Collins Ave, Sunny Isles Beach, FL 33160

Collins Ave / AIA



Atlantic Ocean

DEVELOPMENT AND SALES

FORTUNE
INTERNATIONAL
GROUP



The St. Regis Residences, Sunny Isles Beach are not owned, developed or sold by Marriott International, Inc. or its affiliates ("MI"). La Playa Beach Associates, LLC uses the St. Regis marks under a license from MI, which has not confirmed the accuracy of any of the statements or representations made herein. This project is being developed by La Playa Beach Associates, LLC, which has the right to use the trademark names and logos of Fortune International Group and Chateau Group. ORAL REPRESENTATIONS CANNOT BE RELIED UPON AS CORRECTLY STATING THE REPRESENTATIONS OF THE DEVELOPER. FOR CORRECT REPRESENTATIONS, MAKE REFERENCE TO THIS BROCHURE AND TO THE DOCUMENTS REQUIRED BY SECTION 718.503, FLORIDA STATUTES, TO BE FURNISHED BY A DEVELOPER TO A BUYER OR LESSEE. This is not intended to be an offer to sell, or solicitation to buy, condominium units to residents of any jurisdiction where prohibited by law, and your eligibility for purchase will depend upon your state of residency. Stated dimensions are measured to the exterior boundaries of the exterior walls and the centerline of interior demising walls and in fact vary from the dimensions that would be determined by using the description and definition of the "Unit" set forth in the Declaration (which generally only includes the interior airspace between the perimeter walls and excludes interior structural components). For your reference, the area of the Unit, determined in accordance with those defined unit boundaries, is set forth on Exhibit "3" to the Declaration. Note that measurements of rooms set forth on this floor plan are generally taken at the greatest points of each given room (as if the room were a perfect rectangle), without regard for any cutouts. Accordingly, the area of the actual room will typically be smaller than the product obtained by multiplying the stated length times width. All dimensions are approximate and may vary with actual construction, and all floor plans and development plans are subject to change. Furniture is not included with the sale of the Units.

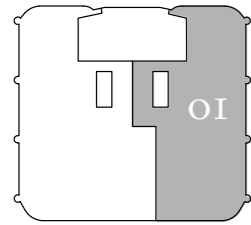


ST REGIS
SUNNY ISLES BEACH ♦ MIAMI
THE RESIDENCES

Residence 01

North Tower / Level 14

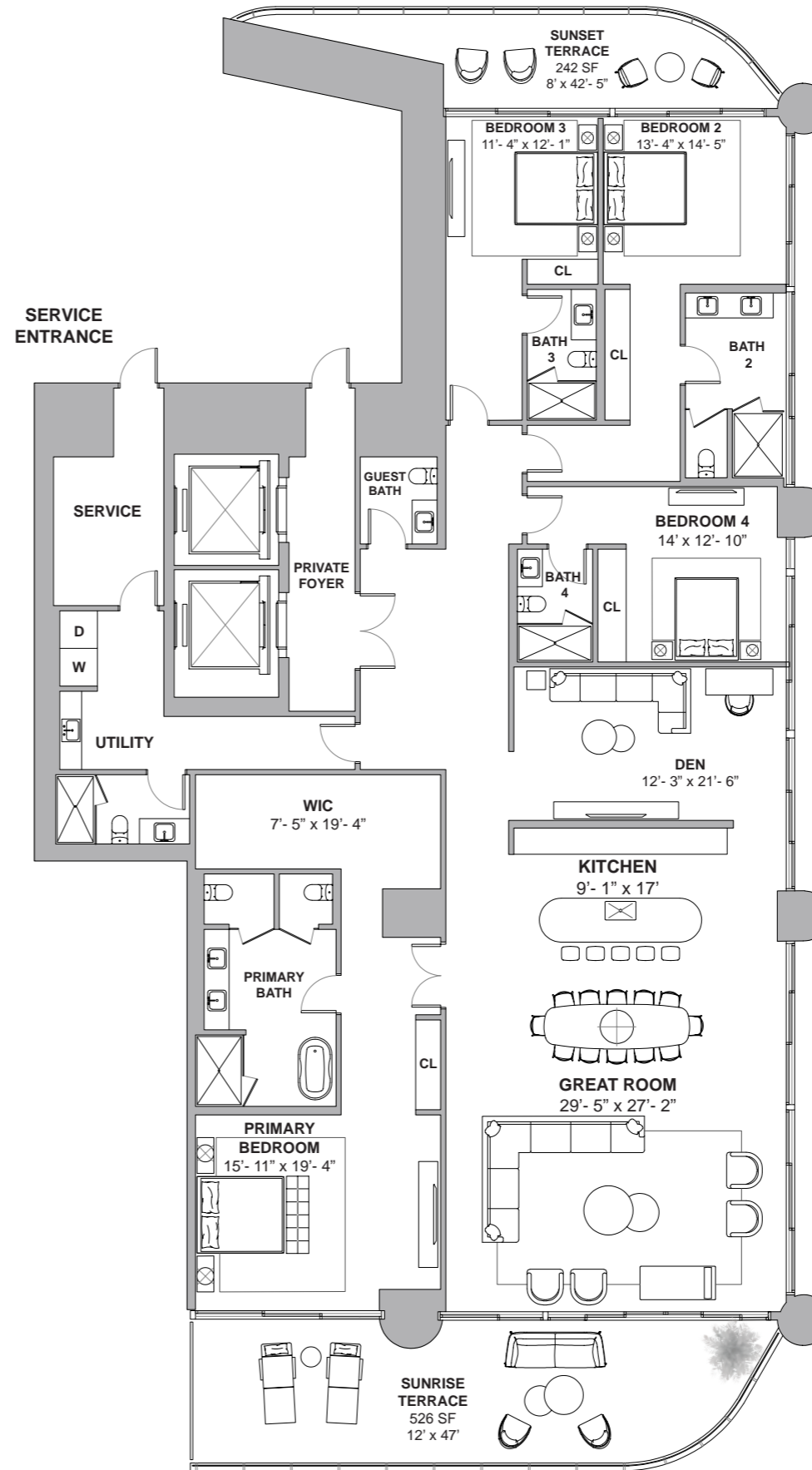
4 BEDROOMS + DEN
5.5 BATHROOMS
4,610 SF / 428 SM INTERIOR
768 SF / 71 SM EXTERIOR
5,378 SF / 500 SM TOTAL



Atlantic Ocean

18801 Collins Ave, Sunny Isles Beach, FL 33160

Collins Ave / AIA



Atlantic Ocean

DEVELOPMENT AND SALES

FORTUNE
INTERNATIONAL
GROUP

CHÂTEAU
GROUP

The St. Regis Residences, Sunny Isles Beach are not owned, developed or sold by Marriott International, Inc. or its affiliates ("MI"). La Playa Beach Associates, LLC uses the St. Regis marks under a license from MI, which has not confirmed the accuracy of any of the statements or representations made herein. This project is being developed by La Playa Beach Associates, LLC, which has the right to use the trademark names and logos of Fortune International Group and Chateau Group. ORAL REPRESENTATIONS CANNOT BE RELIED UPON AS CORRECTLY STATING THE REPRESENTATIONS OF THE DEVELOPER. FOR CORRECT REPRESENTATIONS, MAKE REFERENCE TO THIS BROCHURE AND TO THE DOCUMENTS REQUIRED BY SECTION 718.503, FLORIDA STATUTES, TO BE FURNISHED BY A DEVELOPER TO A BUYER OR LESSEE. This is not intended to be an offer to sell, or solicitation to buy, condominium units to residents of any jurisdiction where prohibited by law, and your eligibility for purchase will depend upon your state of residency. Stated dimensions are measured to the exterior boundaries of the exterior walls and the centerline of interior demising walls and in fact vary from the dimensions that would be determined by using the description and definition of the "Unit" set forth in the Declaration (which generally only includes the interior airspace between the perimeter walls and excludes interior structural components). For your reference, the area of the Unit, determined in accordance with those defined unit boundaries, is set forth on Exhibit "3" to the Declaration. Note that measurements of rooms set forth on this floor plan are generally taken at the greatest points of each given room (as if the room were a perfect rectangle), without regard for any cutouts. Accordingly, the area of the actual room will typically be smaller than the product obtained by multiplying the stated length times width. All dimensions are approximate and may vary with actual construction, and all floor plans and development plans are subject to change. Furniture is not included with the sale of the Units.



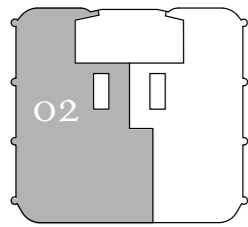
ST REGIS
SUNNY ISLES BEACH ♦ MIAMI
THE RESIDENCES

Collins Ave / AIA

Residence 02

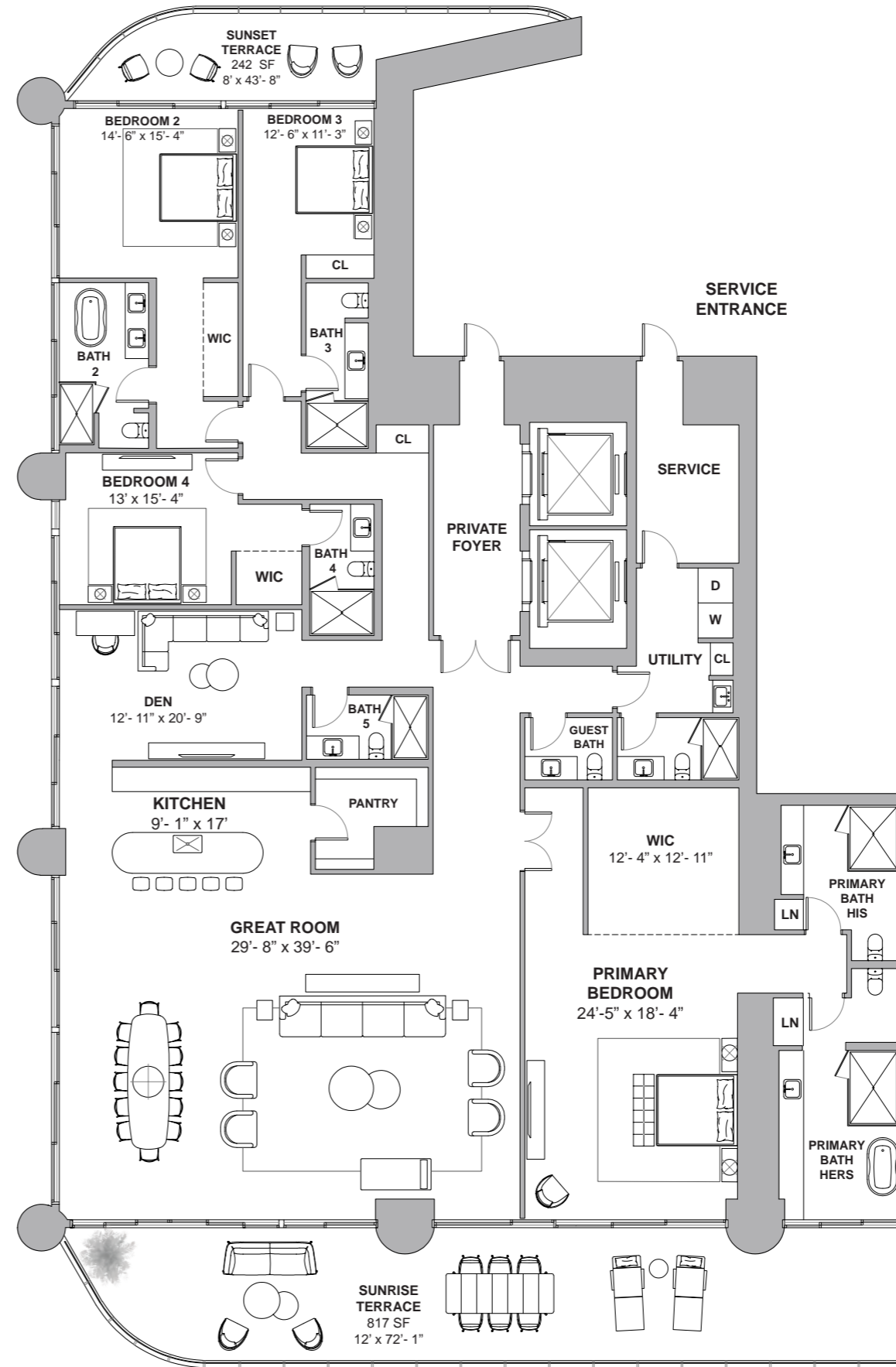
North Tower / Level 14

4 BEDROOMS + DEN
7.5 BATHROOMS
5,550 SF / 516 SM INTERIOR
1,059 SF / 98 SM EXTERIOR
6,609 SF / 614 SM TOTAL



Atlantic Ocean

18801 Collins Ave, Sunny Isles Beach, FL 33160



Atlantic Ocean

DEVELOPMENT AND SALES

FORTUNE
INTERNATIONAL
GROUP

CHATEAU
GROUP

The St. Regis Residences, Sunny Isles Beach are not owned, developed or sold by Marriott International, Inc. or its affiliates ("MI"). La Playa Beach Associates, LLC uses the St. Regis marks under a license from MI, which has not confirmed the accuracy of any of the statements or representations made herein. This project is being developed by La Playa Beach Associates, LLC, which has the right to use the trademark names and logos of Fortune International Group and Chateau Group. ORAL REPRESENTATIONS CANNOT BE RELIED UPON AS CORRECTLY STATING THE REPRESENTATIONS OF THE DEVELOPER. FOR CORRECT REPRESENTATIONS, MAKE REFERENCE TO THIS BROCHURE AND TO THE DOCUMENTS REQUIRED BY SECTION 718.503, FLORIDA STATUTES, TO BE FURNISHED BY A DEVELOPER TO A BUYER OR LESSEE. This is not intended to be an offer to sell, or solicitation to buy, condominium units to residents of any jurisdiction where prohibited by law, and your eligibility for purchase will depend upon your state of residency. Stated dimensions are measured to the exterior boundaries of the exterior walls and the centerline of interior demising walls and in fact vary from the dimensions that would be determined by using the description and definition of the "Unit" set forth in the Declaration (which generally only includes the interior airspace between the perimeter walls and excludes interior structural components). For your reference, the area of the Unit, determined in accordance with those defined unit boundaries, is set forth on Exhibit "3" to the Declaration. Note that measurements of rooms set forth on this floor plan are generally taken at the greatest points of each given room (as if the room were a perfect rectangle), without regard for any cutouts. Accordingly, the area of the actual room will typically be smaller than the product obtained by multiplying the stated length times width. All dimensions are approximate and may vary with actual construction, and all floor plans and development plans are subject to change. Furniture is not included with the sale of the Units.



ST REGIS
SUNNY ISLES BEACH ♦ MIAMI
THE RESIDENCES

Collins Ave / AIA

Residence 02

North Tower / Level 15

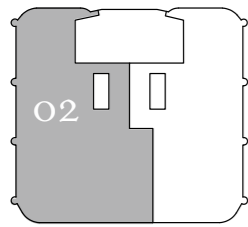
4 BEDROOMS + DEN

7.5 BATHROOMS

5,592 SF / 520 SM INTERIOR

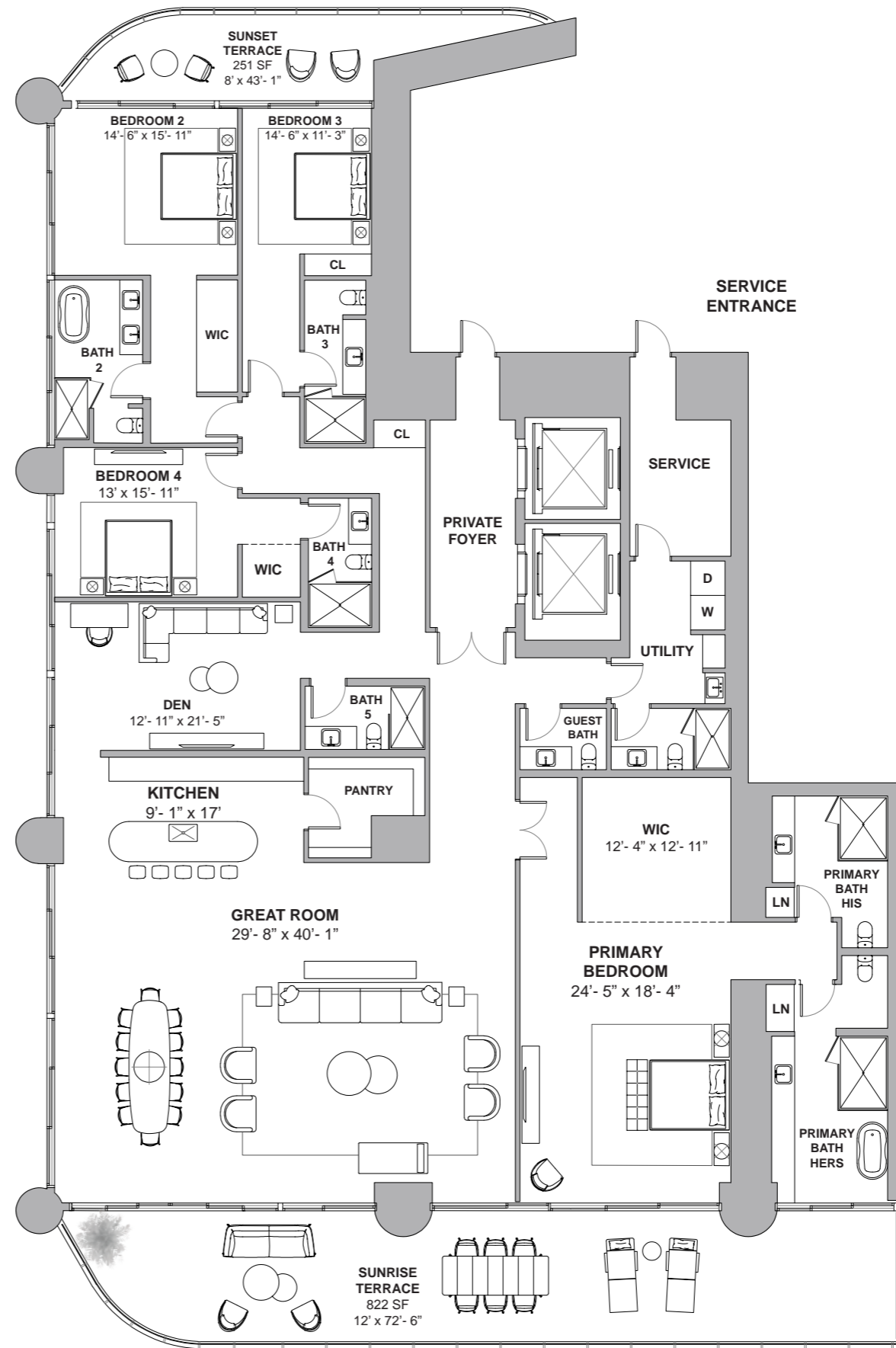
1,073 SF / 100 SM EXTERIOR

6,665 SF / 619 SM TOTAL



Atlantic Ocean

18801 Collins Ave, Sunny Isles Beach, FL 33160



Atlantic Ocean

DEVELOPMENT AND SALES

FORTUNE
INTERNATIONAL
GROUP

CHATEAU
GROUP

The St. Regis Residences, Sunny Isles Beach are not owned, developed or sold by Marriott International, Inc. or its affiliates ("MI"). La Playa Beach Associates, LLC uses the St. Regis marks under a license from MI, which has not confirmed the accuracy of any of the statements or representations made herein. This project is being developed by La Playa Beach Associates, LLC, which has the right to use the trademark names and logos of Fortune International Group and Chateau Group. ORAL REPRESENTATIONS CANNOT BE RELIED UPON AS CORRECTLY STATING THE REPRESENTATIONS OF THE DEVELOPER. FOR CORRECT REPRESENTATIONS, MAKE REFERENCE TO THIS BROCHURE AND TO THE DOCUMENTS REQUIRED BY SECTION 718.503, FLORIDA STATUTES, TO BE FURNISHED BY A DEVELOPER TO A BUYER OR LESSEE. This is not intended to be an offer to sell, or solicitation to buy, condominium units to residents of any jurisdiction where prohibited by law, and your eligibility for purchase will depend upon your state of residency. Stated dimensions are measured to the exterior boundaries of the exterior walls and the centerline of interior demising walls and in fact vary from the dimensions that would be determined by using the description and definition of the "Unit" set forth in the Declaration (which generally only includes the interior airspace between the perimeter walls and excludes interior structural components). For your reference, the area of the Unit, determined in accordance with those defined unit boundaries, is set forth on Exhibit "3" to the Declaration. Note that measurements of rooms set forth on this floor plan are generally taken at the greatest points of each given room (as if the room were a perfect rectangle), without regard for any cutouts. Accordingly, the area of the actual room will typically be smaller than the product obtained by multiplying the stated length times width. All dimensions are approximate and may vary with actual construction, and all floor plans and development plans are subject to change. Furniture is not included with the sale of the Units.



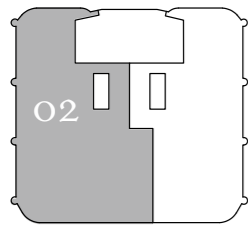
ST REGIS
SUNNY ISLES BEACH ♦ MIAMI
THE RESIDENCES

Collins Ave / AIA

Residence 02

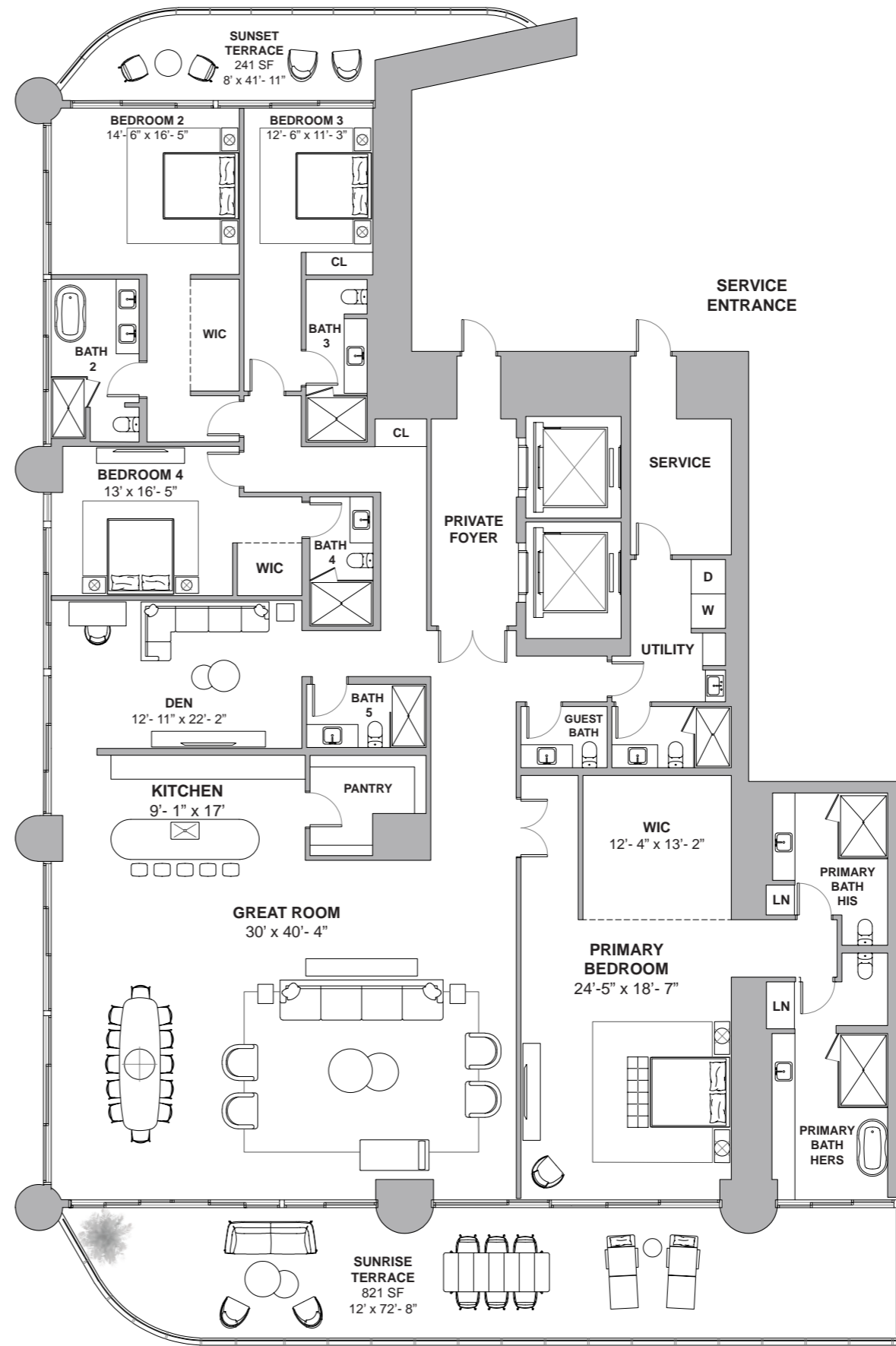
North Tower / Level 16

4 BEDROOMS + DEN
7.5 BATHROOMS
5,583 SF / 519 SM INTERIOR
1,062 SF / 99 SM EXTERIOR
6,645 SF / 617 SM TOTAL



Atlantic Ocean

18801 Collins Ave, Sunny Isles Beach, FL 33160



Atlantic Ocean

DEVELOPMENT AND SALES

FORTUNE
INTERNATIONAL
GROUP

CHATEAU
GROUP

The St. Regis Residences, Sunny Isles Beach are not owned, developed or sold by Marriott International, Inc. or its affiliates ("MI"). La Playa Beach Associates, LLC uses the St. Regis marks under a license from MI, which has not confirmed the accuracy of any of the statements or representations made herein. This project is being developed by La Playa Beach Associates, LLC, which has the right to use the trademark names and logos of Fortune International Group and Chateau Group. ORAL REPRESENTATIONS CANNOT BE RELIED UPON AS CORRECTLY STATING THE REPRESENTATIONS OF THE DEVELOPER. FOR CORRECT REPRESENTATIONS, MAKE REFERENCE TO THIS BROCHURE AND TO THE DOCUMENTS REQUIRED BY SECTION 718.503, FLORIDA STATUTES, TO BE FURNISHED BY A DEVELOPER TO A BUYER OR LESSEE. This is not intended to be an offer to sell, or solicitation to buy, condominium units to residents of any jurisdiction where prohibited by law, and your eligibility for purchase will depend upon your state of residency. Stated dimensions are measured to the exterior boundaries of the exterior walls and the centerline of interior demising walls and in fact vary from the dimensions that would be determined by using the description and definition of the "Unit" set forth in the Declaration (which generally only includes the interior airspace between the perimeter walls and excludes interior structural components). For your reference, the area of the Unit, determined in accordance with those defined unit boundaries, is set forth on Exhibit "3" to the Declaration. Note that measurements of rooms set forth on this floor plan are generally taken at the greatest points of each given room (as if the room were a perfect rectangle), without regard for any cutouts. Accordingly, the area of the actual room will typically be smaller than the product obtained by multiplying the stated length times width. All dimensions are approximate and may vary with actual construction, and all floor plans and development plans are subject to change. Furniture is not included with the sale of the Units.

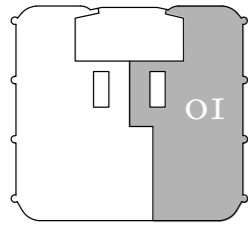


ST REGIS
SUNNY ISLES BEACH ♦ MIAMI
THE RESIDENCES

Residence 01

North Tower / Level 17

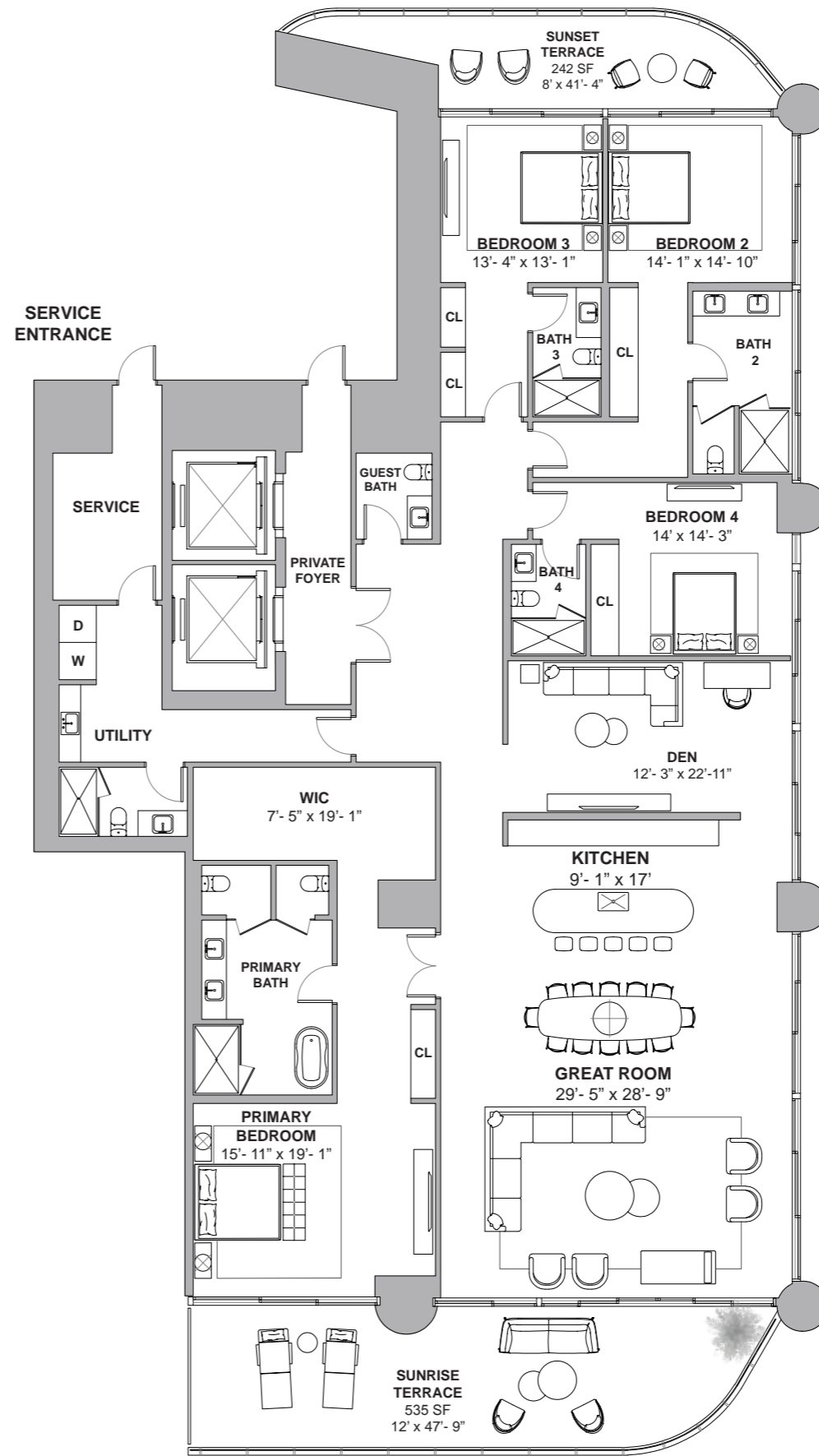
4 BEDROOMS + DEN
5.5 BATHROOMS
4,683 SF / 435 SM INTERIOR
777 SF / 72 SM EXTERIOR
5,460 SF / 507 SM TOTAL



Atlantic Ocean

18801 Collins Ave, Sunny Isles Beach, FL 33160

Collins Ave / AIA



Atlantic Ocean

DEVELOPMENT AND SALES

FORTUNE
INTERNATIONAL
GROUP

CHATEAU
GROUP

The St. Regis Residences, Sunny Isles Beach are not owned, developed or sold by Marriott International, Inc. or its affiliates ("MI"). La Playa Beach Associates, LLC uses the St. Regis marks under a license from MI, which has not confirmed the accuracy of any of the statements or representations made herein. This project is being developed by La Playa Beach Associates, LLC, which has the right to use the trademark names and logos of Fortune International Group and Chateau Group. ORAL REPRESENTATIONS CANNOT BE RELIED UPON AS CORRECTLY STATING THE REPRESENTATIONS OF THE DEVELOPER. FOR CORRECT REPRESENTATIONS, MAKE REFERENCE TO THIS BROCHURE AND TO THE DOCUMENTS REQUIRED BY SECTION 718.503, FLORIDA STATUTES, TO BE FURNISHED BY A DEVELOPER TO A BUYER OR LESSEE. This is not intended to be an offer to sell, or solicitation to buy, condominium units to residents of any jurisdiction where prohibited by law, and your eligibility for purchase will depend upon your state of residency. Stated dimensions are measured to the exterior boundaries of the exterior walls and the centerline of interior demising walls and in fact vary from the dimensions that would be determined by using the description and definition of the "Unit" set forth in the Declaration (which generally only includes the interior airspace between the perimeter walls and excludes interior structural components). For your reference, the area of the Unit, determined in accordance with those defined unit boundaries, is set forth on Exhibit "3" to the Declaration. Note that measurements of rooms set forth on this floor plan are generally taken at the greatest points of each given room (as if the room were a perfect rectangle), without regard for any cutouts. Accordingly, the area of the actual room will typically be smaller than the product obtained by multiplying the stated length times width. All dimensions are approximate and may vary with actual construction, and all floor plans and development plans are subject to change. Furniture is not included with the sale of the Units.



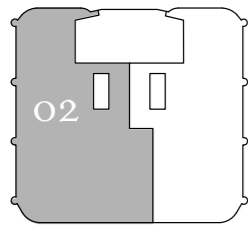
ST REGIS
SUNNY ISLES BEACH ♦ MIAMI
THE RESIDENCES

Collins Ave / AIA

Residence 02

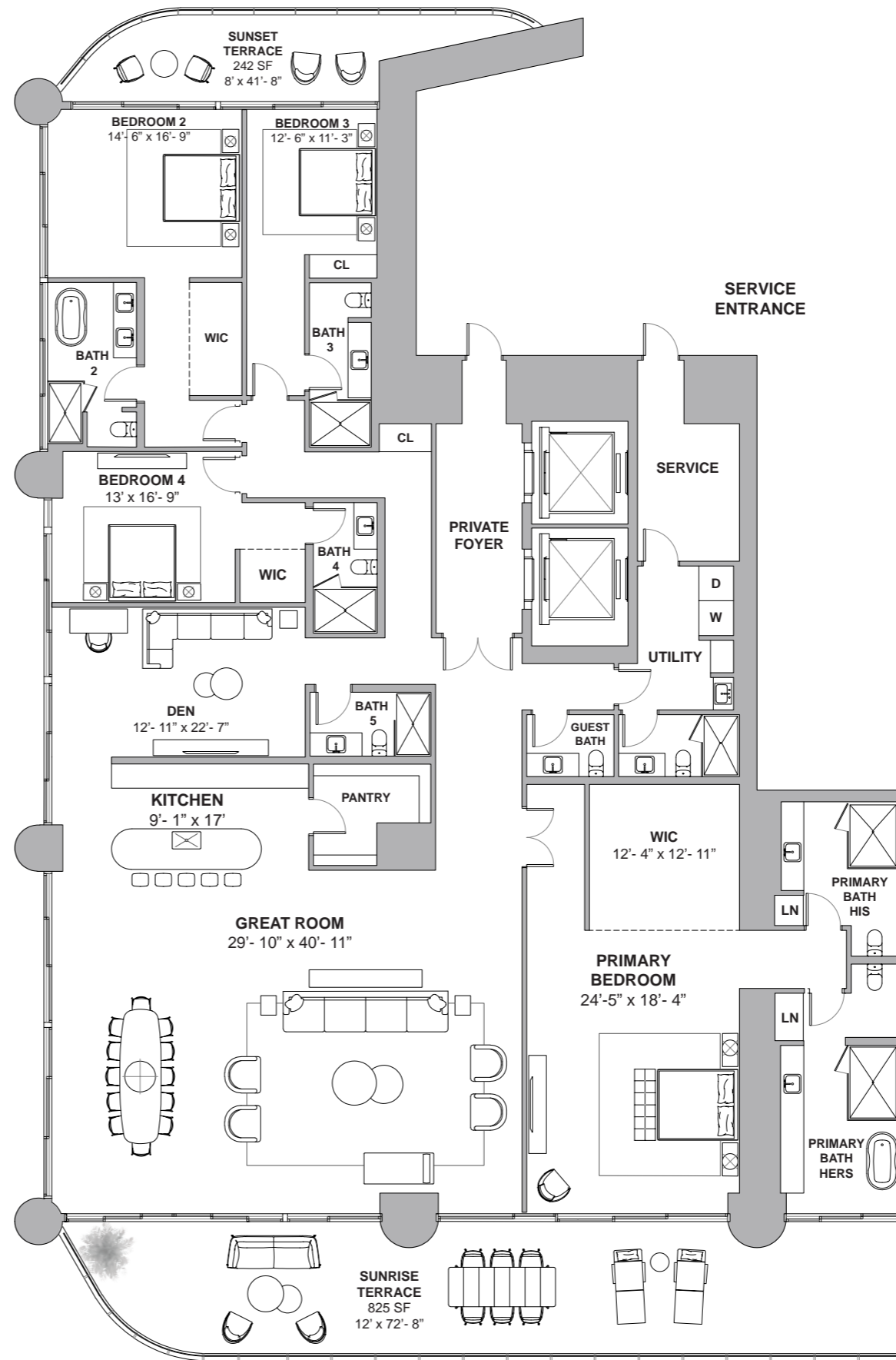
North Tower / Level 17

4 BEDROOMS + DEN
7.5 BATHROOMS
5,617 SF / 522 SM INTERIOR
1,067 SF / 99 SM EXTERIOR
6,684 SF / 621 SM TOTAL



Atlantic Ocean

18801 Collins Ave, Sunny Isles Beach, FL 33160



Atlantic Ocean

DEVELOPMENT AND SALES

FORTUNE
INTERNATIONAL
GROUP

CHATEAU
GROUP

The St. Regis Residences, Sunny Isles Beach are not owned, developed or sold by Marriott International, Inc. or its affiliates ("MI"). La Playa Beach Associates, LLC uses the St. Regis marks under a license from MI, which has not confirmed the accuracy of any of the statements or representations made herein. This project is being developed by La Playa Beach Associates, LLC, which has the right to use the trademark names and logos of Fortune International Group and Chateau Group. ORAL REPRESENTATIONS CANNOT BE RELIED UPON AS CORRECTLY STATING THE REPRESENTATIONS OF THE DEVELOPER. FOR CORRECT REPRESENTATIONS, MAKE REFERENCE TO THIS BROCHURE AND TO THE DOCUMENTS REQUIRED BY SECTION 718.503, FLORIDA STATUTES, TO BE FURNISHED BY A DEVELOPER TO A BUYER OR LESSEE. This is not intended to be an offer to sell, or solicitation to buy, condominium units to residents of any jurisdiction where prohibited by law, and your eligibility for purchase will depend upon your state of residency. Stated dimensions are measured to the exterior boundaries of the exterior walls and the centerline of interior demising walls and in fact vary from the dimensions that would be determined by using the description and definition of the "Unit" set forth in the Declaration (which generally only includes the interior airspace between the perimeter walls and excludes interior structural components). For your reference, the area of the Unit, determined in accordance with those defined unit boundaries, is set forth on Exhibit "3" to the Declaration. Note that measurements of rooms set forth on this floor plan are generally taken at the greatest points of each given room (as if the room were a perfect rectangle), without regard for any cutouts. Accordingly, the area of the actual room will typically be smaller than the product obtained by multiplying the stated length times width. All dimensions are approximate and may vary with actual construction, and all floor plans and development plans are subject to change. Furniture is not included with the sale of the Units.



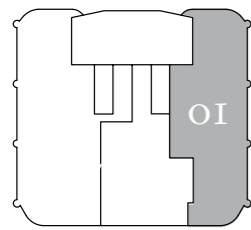
ST REGIS
SUNNY ISLES BEACH ♦ MIAMI
THE RESIDENCES

Collins Ave / AIA

Residence 01

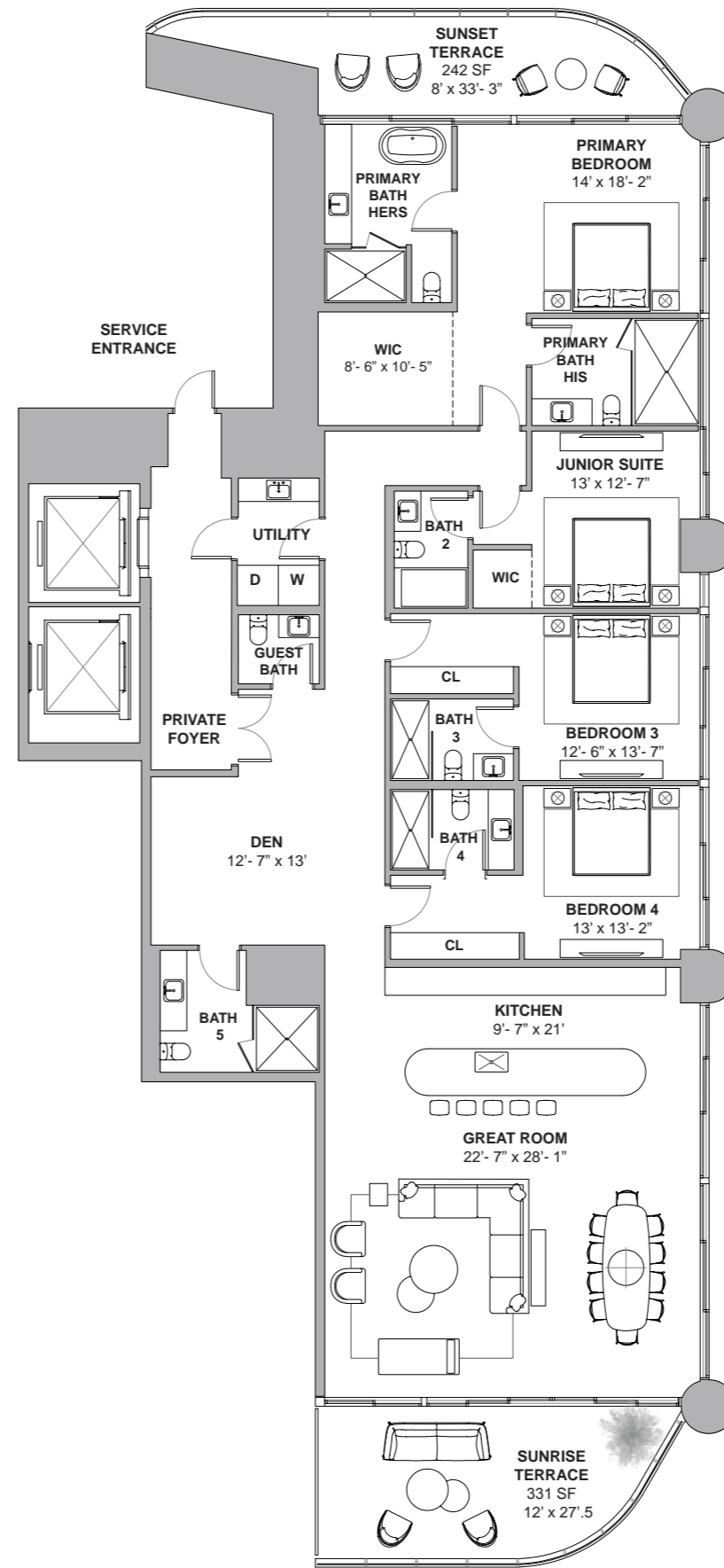
North Tower / Levels 18 to 23

4 BEDROOMS + DEN
6.5 BATHROOMS
3,569 SF / 332 SM INTERIOR
573 SF / 53 SM EXTERIOR
4,142 SF / 385 SM TOTAL



Atlantic Ocean

18801 Collins Ave, Sunny Isles Beach, FL 33160



Atlantic Ocean

DEVELOPMENT AND SALES

FORTUNE
INTERNATIONAL
GROUP

CHATEAU
GROUP

The St. Regis Residences, Sunny Isles Beach are not owned, developed or sold by Marriott International, Inc. or its affiliates ("MI"). La Playa Beach Associates, LLC uses the St. Regis marks under a license from MI, which has not confirmed the accuracy of any of the statements or representations made herein. This project is being developed by La Playa Beach Associates, LLC, which has the right to use the trademark names and logos of Fortune International Group and Chateau Group. ORAL REPRESENTATIONS CANNOT BE RELIED UPON AS CORRECTLY STATING THE REPRESENTATIONS OF THE DEVELOPER. FOR CORRECT REPRESENTATIONS, MAKE REFERENCE TO THIS BROCHURE AND TO THE DOCUMENTS REQUIRED BY SECTION 718.503, FLORIDA STATUTES, TO BE FURNISHED BY A DEVELOPER TO A BUYER OR LESSEE. This is not intended to be an offer to sell, or solicitation to buy, condominium units to residents of any jurisdiction where prohibited by law, and your eligibility for purchase will depend upon your state of residency. Stated dimensions are measured to the exterior boundaries of the exterior walls and the centerline of interior demising walls and in fact vary from the dimensions that would be determined by using the description and definition of the "Unit" set forth in the Declaration (which generally only includes the interior airspace between the perimeter walls and excludes interior structural components). For your reference, the area of the Unit, determined in accordance with those defined unit boundaries, is set forth on Exhibit "3" to the Declaration. Note that measurements of rooms set forth on this floor plan are generally taken at the greatest points of each given room (as if the room were a perfect rectangle), without regard for any cutouts. Accordingly, the area of the actual room will typically be smaller than the product obtained by multiplying the stated length times width. All dimensions are approximate and may vary with actual construction, and all floor plans and development plans are subject to change. Furniture is not included with the sale of the Units.

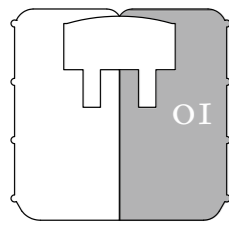


ST REGIS
SUNNY ISLES BEACH ♦ MIAMI
THE RESIDENCES

Residence 01

North Tower / Level 8

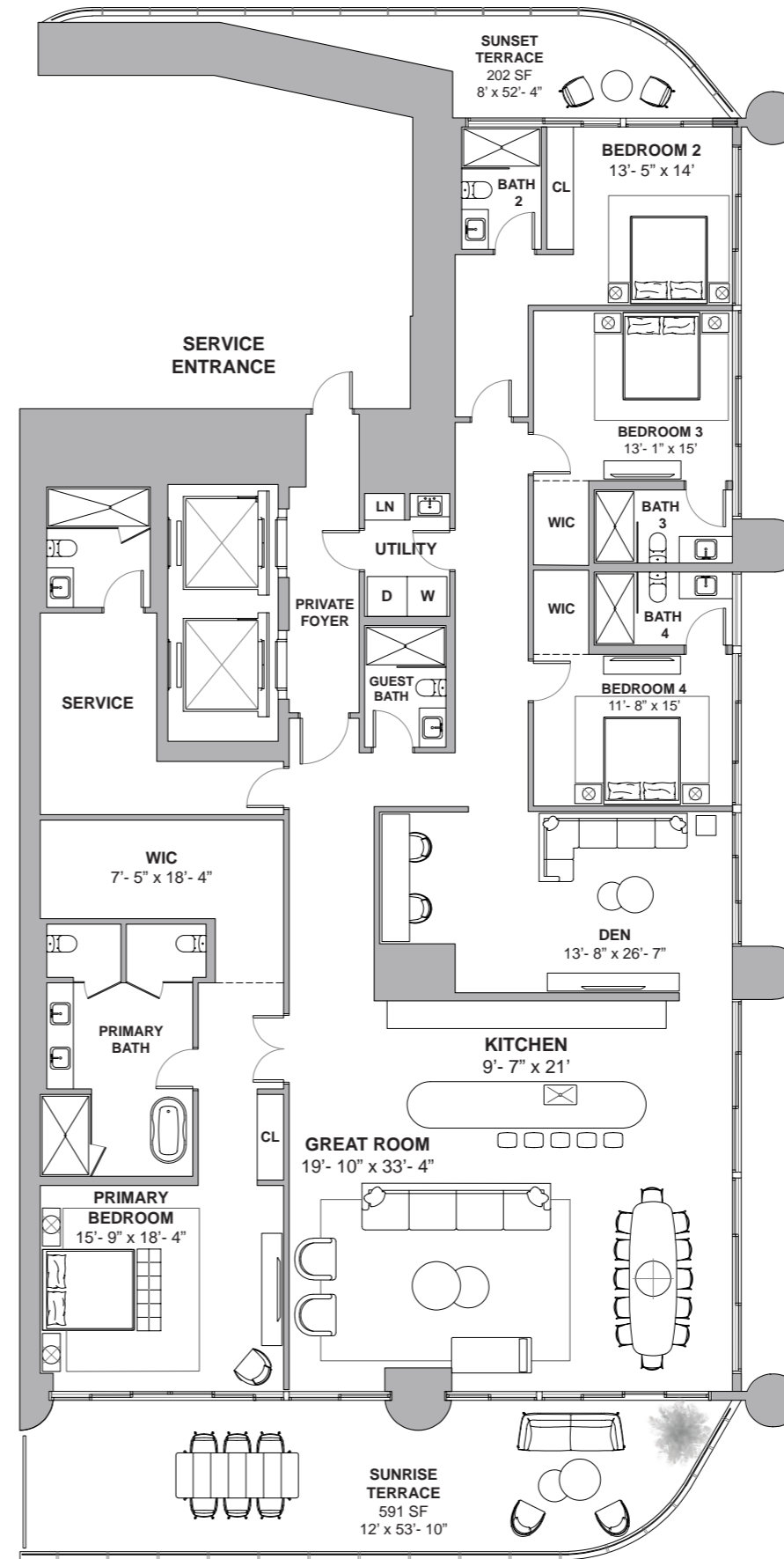
4 BEDROOMS + DEN
6 BATHROOMS
4,428 SF / 411 SM INTERIOR
793 SF / 74 SM EXTERIOR
5,221 SF / 485 SM TOTAL



Atlantic Ocean

18801 Collins Ave, Sunny Isles Beach, FL 33160

Collins Ave / AIA



Atlantic Ocean

DEVELOPMENT AND SALES

FORTUNE
INTERNATIONAL
GROUP

CHATEAU
GROUP

The St. Regis Residences, Sunny Isles Beach are not owned, developed or sold by Marriott International, Inc. or its affiliates ("MI"). La Playa Beach Associates, LLC uses the St. Regis marks under a license from MI, which has not confirmed the accuracy of any of the statements or representations made herein. This project is being developed by La Playa Beach Associates, LLC, which has the right to use the trademark names and logos of Fortune International Group and Chateau Group. ORAL REPRESENTATIONS CANNOT BE RELIED UPON AS CORRECTLY STATING THE REPRESENTATIONS OF THE DEVELOPER. FOR CORRECT REPRESENTATIONS, MAKE REFERENCE TO THIS BROCHURE AND TO THE DOCUMENTS REQUIRED BY SECTION 718.503, FLORIDA STATUTES, TO BE FURNISHED BY A DEVELOPER TO A BUYER OR LESSEE. This is not intended to be an offer to sell, or solicitation to buy, condominium units to residents of any jurisdiction where prohibited by law, and your eligibility for purchase will depend upon your state of residency. Stated dimensions are measured to the exterior boundaries of the exterior walls and the centerline of interior demising walls and in fact vary from the dimensions that would be determined by using the description and definition of the "Unit" set forth in the Declaration (which generally only includes the interior airspace between the perimeter walls and excludes interior structural components). For your reference, the area of the Unit, determined in accordance with those defined unit boundaries, is set forth on Exhibit "3" to the Declaration. Note that measurements of rooms set forth on this floor plan are generally taken at the greatest points of each given room (as if the room were a perfect rectangle), without regard for any cutouts. Accordingly, the area of the actual room will typically be smaller than the product obtained by multiplying the stated length times width. All dimensions are approximate and may vary with actual construction, and all floor plans and development plans are subject to change. Furniture is not included with the sale of the Units.