



**ST REGIS**  
SUNNY ISLES BEACH ♦ MIAMI  
THE RESIDENCES

Collins Ave / AIA

## Residence 01

North Tower / Levels 49 to 51

4 BEDROOMS + DEN

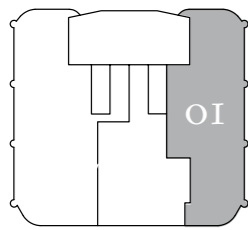
6.5 BATHROOMS

3,570 SF / 332 SM INTERIOR

563 SF / 52 SM EXTERIOR

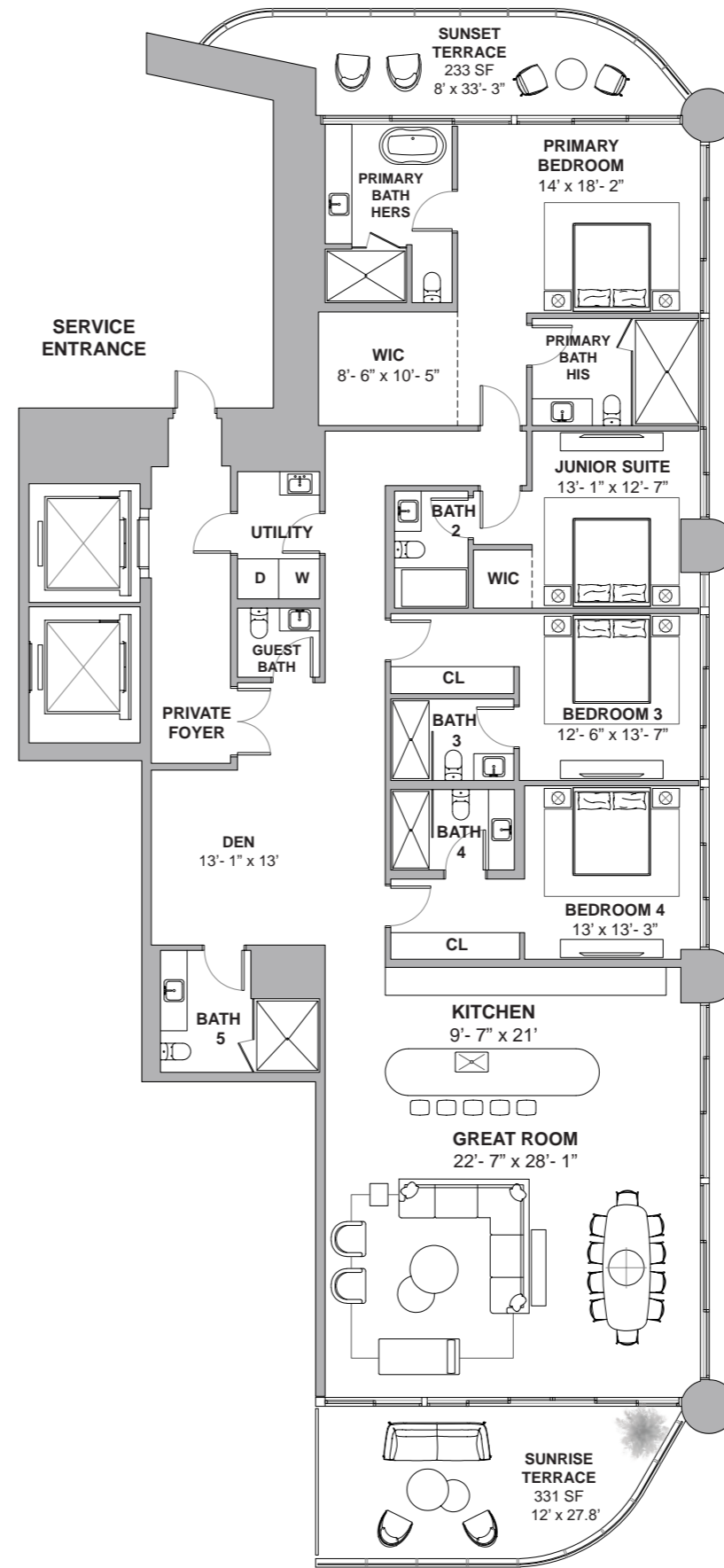
4,133 SF / 384 SM TOTAL

\*Terraces on these levels range from 549 to 551 SF



Atlantic Ocean

18801 Collins Ave, Sunny Isles Beach, FL 33160



Atlantic Ocean

DEVELOPMENT AND SALES

**FORTUNE**  
INTERNATIONAL  
GROUP

**CHATEAU**  
GROUP

The St. Regis Residences, Sunny Isles Beach are not owned, developed or sold by Marriott International, Inc. or its affiliates ("MI"). La Playa Beach Associates, LLC uses the St. Regis marks under a license from MI, which has not confirmed the accuracy of any of the statements or representations made herein. This project is being developed by La Playa Beach Associates, LLC, which has the right to use the trademark names and logos of Fortune International Group and Chateau Group. ORAL REPRESENTATIONS CANNOT BE RELIED UPON AS CORRECTLY STATING THE REPRESENTATIONS OF THE DEVELOPER. FOR CORRECT REPRESENTATIONS, MAKE REFERENCE TO THIS BROCHURE AND TO THE DOCUMENTS REQUIRED BY SECTION 718.503, FLORIDA STATUTES, TO BE FURNISHED BY A DEVELOPER TO A BUYER OR LESSEE. This is not intended to be an offer to sell, or solicitation to buy, condominium units to residents of any jurisdiction where prohibited by law, and your eligibility for purchase will depend upon your state of residency. Stated dimensions are measured to the exterior boundaries of the exterior walls and the centerline of interior demising walls and in fact vary from the dimensions that would be determined by using the description and definition of the "Unit" set forth in the Declaration (which generally only includes the interior airspace between the perimeter walls and excludes interior structural components). For your reference, the area of the Unit, determined in accordance with those defined unit boundaries, is set forth on Exhibit "3" to the Declaration. Note that measurements of rooms set forth on this floor plan are generally taken at the greatest points of each given room (as if the room were a perfect rectangle), without regard for any cutouts. Accordingly, the area of the actual room will typically be smaller than the product obtained by multiplying the stated length times width. All dimensions are approximate and may vary with actual construction, and all floor plans and development plans are subject to change. Furniture is not included with the sale of the Units.



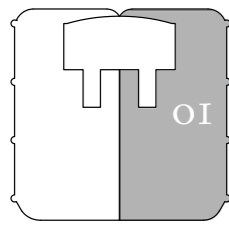
**ST REGIS**  
SUNNY ISLES BEACH ♦ MIAMI  
THE RESIDENCES

Collins Ave / AIA

# Residence 01

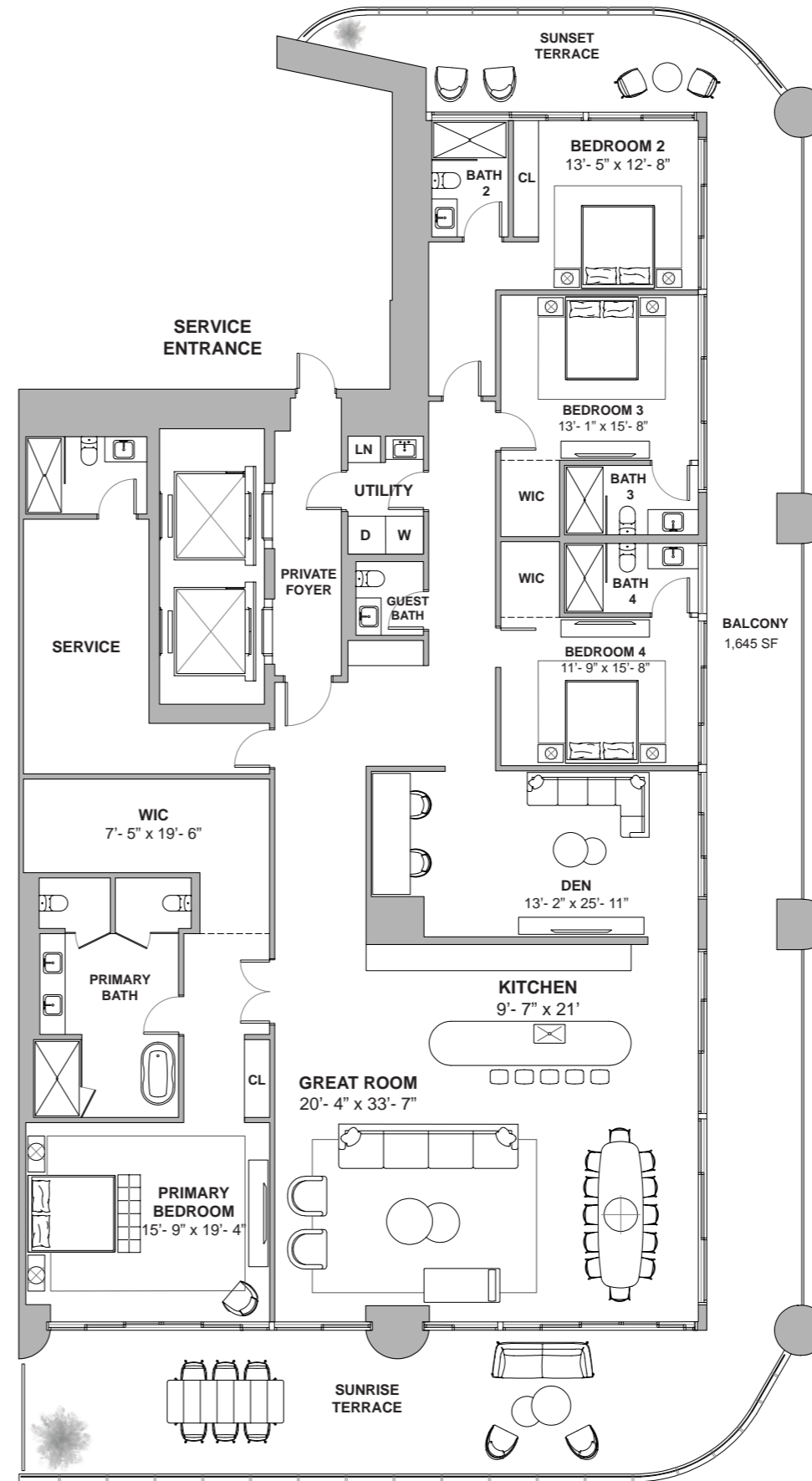
North Tower / Level 52

4 BEDROOMS + DEN  
5.5 BATHROOMS  
4,428 SF / 411 SM INTERIOR  
1,645 SF / 153 SM EXTERIOR  
6,072 SF / 564 SM TOTAL



Atlantic Ocean

18801 Collins Ave, Sunny Isles Beach, FL 33160



Atlantic Ocean

DEVELOPMENT AND SALES  
**FORTUNE INTERNATIONAL GROUP** **CHATEAU GROUP**

The St. Regis Residences, Sunny Isles Beach are not owned, developed or sold by Marriott International, Inc. or its affiliates ("MI"). La Playa Beach Associates, LLC uses the St. Regis marks under a license from MI, which has not confirmed the accuracy of any of the statements or representations made herein. This project is being developed by La Playa Beach Associates, LLC, which has the right to use the trademark names and logos of Fortune International Group and Chateau Group. ORAL REPRESENTATIONS CANNOT BE RELIED UPON AS CORRECTLY STATING THE REPRESENTATIONS OF THE DEVELOPER. FOR CORRECT REPRESENTATIONS, MAKE REFERENCE TO THIS BROCHURE AND TO THE DOCUMENTS REQUIRED BY SECTION 718.503, FLORIDA STATUTES, TO BE FURNISHED BY A DEVELOPER TO A BUYER OR LESSEE. This is not intended to be an offer to sell, or solicitation to buy, condominium units to residents of any jurisdiction where prohibited by law, and your eligibility for purchase will depend upon your state of residency. Stated dimensions are measured to the exterior boundaries of the exterior walls and the centerline of interior demising walls and in fact vary from the dimensions that would be determined by using the description and definition of the "Unit" set forth in the Declaration (which generally only includes the interior airspace between the perimeter walls and excludes interior structural components). For your reference, the area of the Unit, determined in accordance with those defined unit boundaries, is set forth on Exhibit "3" to the Declaration. Note that measurements of rooms set forth on this floor plan are generally taken at the greatest points of each given room (as if the room were a perfect rectangle), without regard for any cutouts. Accordingly, the area of the actual room will typically be smaller than the product obtained by multiplying the stated length times width. All dimensions are approximate and may vary with actual construction, and all floor plans and development plans are subject to change. Furniture is not included with the sale of the Units.

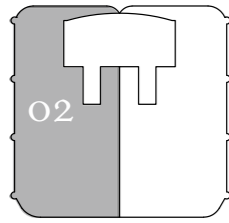


**ST REGIS**  
SUNNY ISLES BEACH ♦ MIAMI  
THE RESIDENCES

## Residence 02

North Tower / Level 52

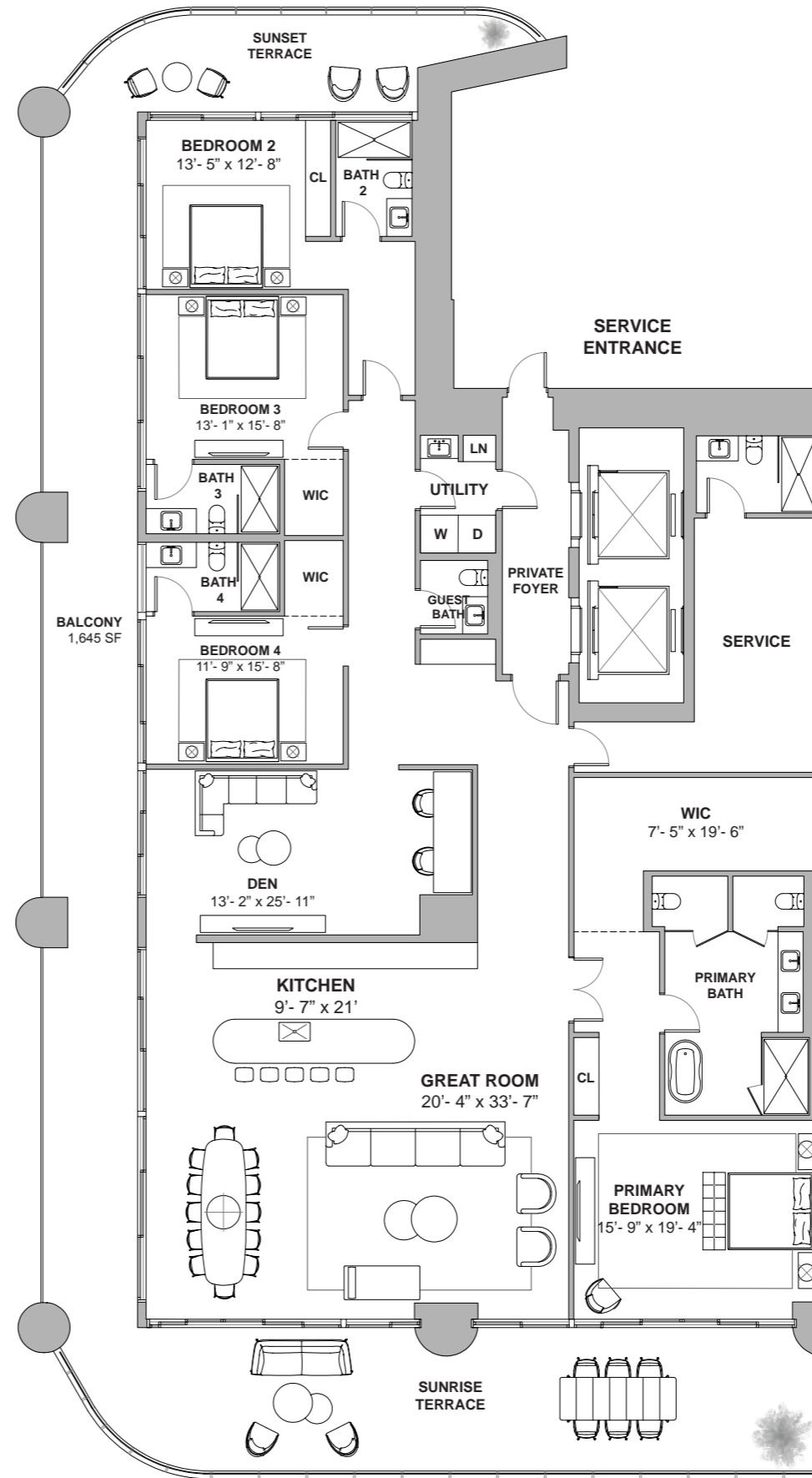
4 BEDROOMS + DEN  
5.5 BATHROOMS  
4,428 SF / 411 SM INTERIOR  
1,645 SF / 153 SM EXTERIOR  
6,073 SF / 564 SM TOTAL



Atlantic Ocean

18801 Collins Ave, Sunny Isles Beach, FL 33160

Collins Ave / AIA



Atlantic Ocean

DEVELOPMENT AND SALES

**FORTUNE**  
INTERNATIONAL  
GROUP

**CHATEAU**  
GROUP

The St. Regis Residences, Sunny Isles Beach are not owned, developed or sold by Marriott International, Inc. or its affiliates ("MI"). La Playa Beach Associates, LLC uses the St. Regis marks under a license from MI, which has not confirmed the accuracy of any of the statements or representations made herein. This project is being developed by La Playa Beach Associates, LLC, which has the right to use the trademark names and logos of Fortune International Group and Chateau Group. ORAL REPRESENTATIONS CANNOT BE RELIED UPON AS CORRECTLY STATING THE REPRESENTATIONS OF THE DEVELOPER. FOR CORRECT REPRESENTATIONS, MAKE REFERENCE TO THIS BROCHURE AND TO THE DOCUMENTS REQUIRED BY SECTION 718.503, FLORIDA STATUTES, TO BE FURNISHED BY A DEVELOPER TO A BUYER OR LESSEE. This is not intended to be an offer to sell, or solicitation to buy, condominium units to residents of any jurisdiction where prohibited by law, and your eligibility for purchase will depend upon your state of residency. Stated dimensions are measured to the exterior boundaries of the exterior walls and the centerline of interior demising walls and in fact vary from the dimensions that would be determined by using the description and definition of the "Unit" set forth in the Declaration (which generally only includes the interior airspace between the perimeter walls and excludes interior structural components). For your reference, the area of the Unit, determined in accordance with those defined unit boundaries, is set forth on Exhibit "3" to the Declaration. Note that measurements of rooms set forth on this floor plan are generally taken at the greatest points of each given room (as if the room were a perfect rectangle), without regard for any cutouts. Accordingly, the area of the actual room will typically be smaller than the product obtained by multiplying the stated length times width. All dimensions are approximate and may vary with actual construction, and all floor plans and development plans are subject to change. Furniture is not included with the sale of the Units.

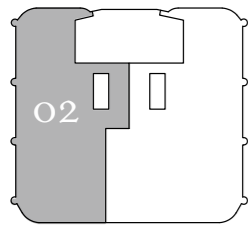


**ST REGIS**  
SUNNY ISLES BEACH ♦ MIAMI  
THE RESIDENCES

## Residence 02

North Tower / Level 53

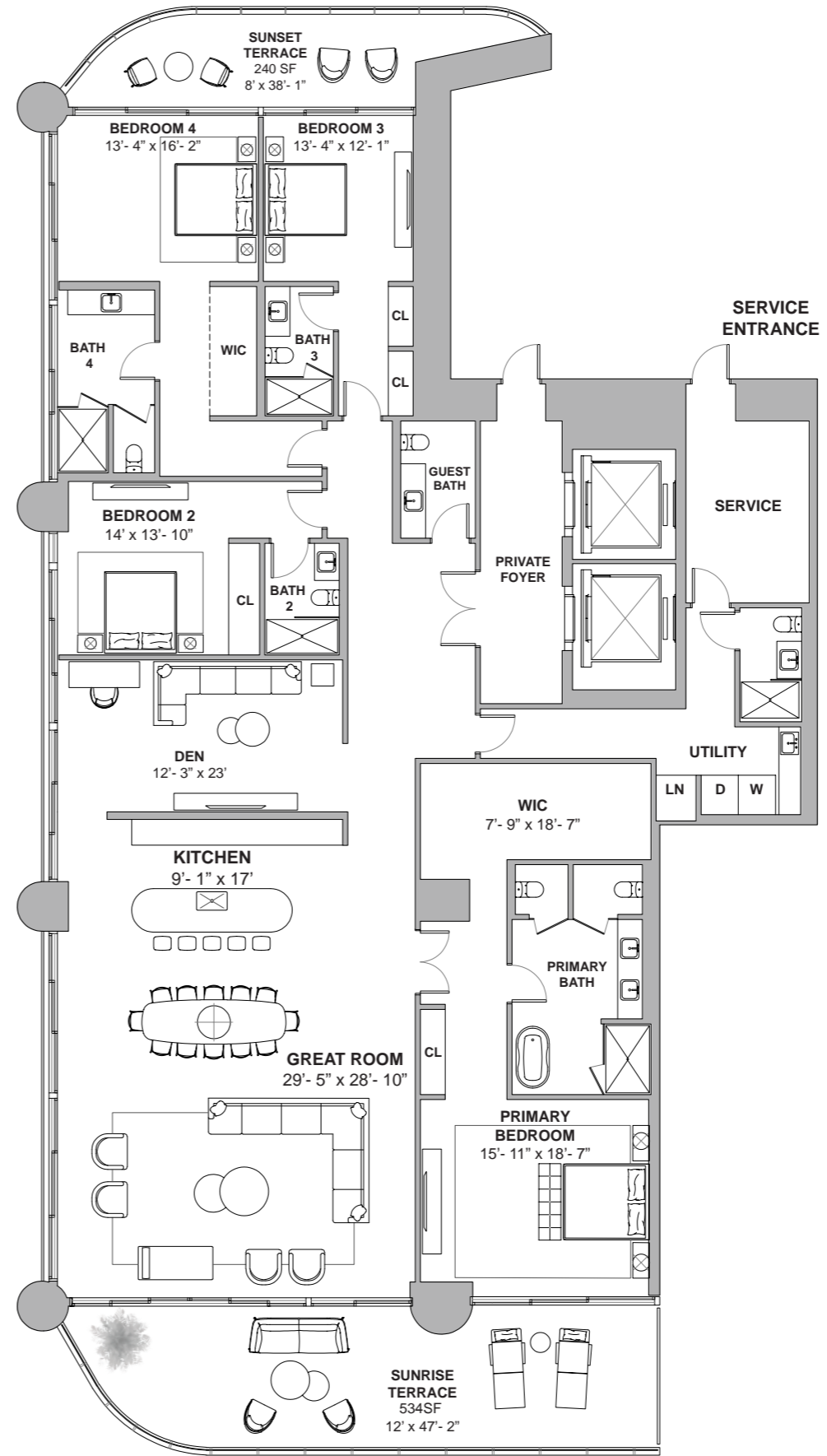
4 BEDROOMS + DEN  
5.5 BATHROOMS  
4,526 SF / 420 SM INTERIOR  
774 SF / 72 SM EXTERIOR  
5,300 SF / 492 SM TOTAL



Atlantic Ocean

18801 Collins Ave, Sunny Isles Beach, FL 33160

Collins Ave / AIA



Atlantic Ocean

DEVELOPMENT AND SALES

**FORTUNE**  
INTERNATIONAL  
GROUP

**CHATEAU**  
GROUP

The St. Regis Residences, Sunny Isles Beach are not owned, developed or sold by Marriott International, Inc. or its affiliates ("MI"). La Playa Beach Associates, LLC uses the St. Regis marks under a license from MI, which has not confirmed the accuracy of any of the statements or representations made herein. This project is being developed by La Playa Beach Associates, LLC, which has the right to use the trademark names and logos of Fortune International Group and Chateau Group. ORAL REPRESENTATIONS CANNOT BE RELIED UPON AS CORRECTLY STATING THE REPRESENTATIONS OF THE DEVELOPER. FOR CORRECT REPRESENTATIONS, MAKE REFERENCE TO THIS BROCHURE AND TO THE DOCUMENTS REQUIRED BY SECTION 718.503, FLORIDA STATUTES, TO BE FURNISHED BY A DEVELOPER TO A BUYER OR LESSEE. This is not intended to be an offer to sell, or solicitation to buy, condominium units to residents of any jurisdiction where prohibited by law, and your eligibility for purchase will depend upon your state of residency. Stated dimensions are measured to the exterior boundaries of the exterior walls and the centerline of interior demising walls and in fact vary from the dimensions that would be determined by using the description and definition of the "Unit" set forth in the Declaration (which generally only includes the interior airspace between the perimeter walls and excludes interior structural components). For your reference, the area of the Unit, determined in accordance with those defined unit boundaries, is set forth on Exhibit "3" to the Declaration. Note that measurements of rooms set forth on this floor plan are generally taken at the greatest points of each given room (as if the room were a perfect rectangle), without regard for any cutouts. Accordingly, the area of the actual room will typically be smaller than the product obtained by multiplying the stated length times width. All dimensions are approximate and may vary with actual construction, and all floor plans and development plans are subject to change. Furniture is not included with the sale of the Units.



**ST REGIS**  
SUNNY ISLES BEACH ♦ MIAMI  
THE RESIDENCES

Collins Ave / AIA

# Residence 01

North Tower / Level 54

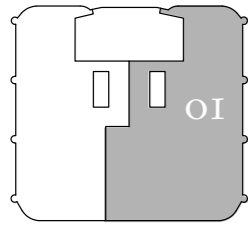
4 BEDROOMS + DEN

7.5 BATHROOMS

5,481 SF / 509 SM INTERIOR

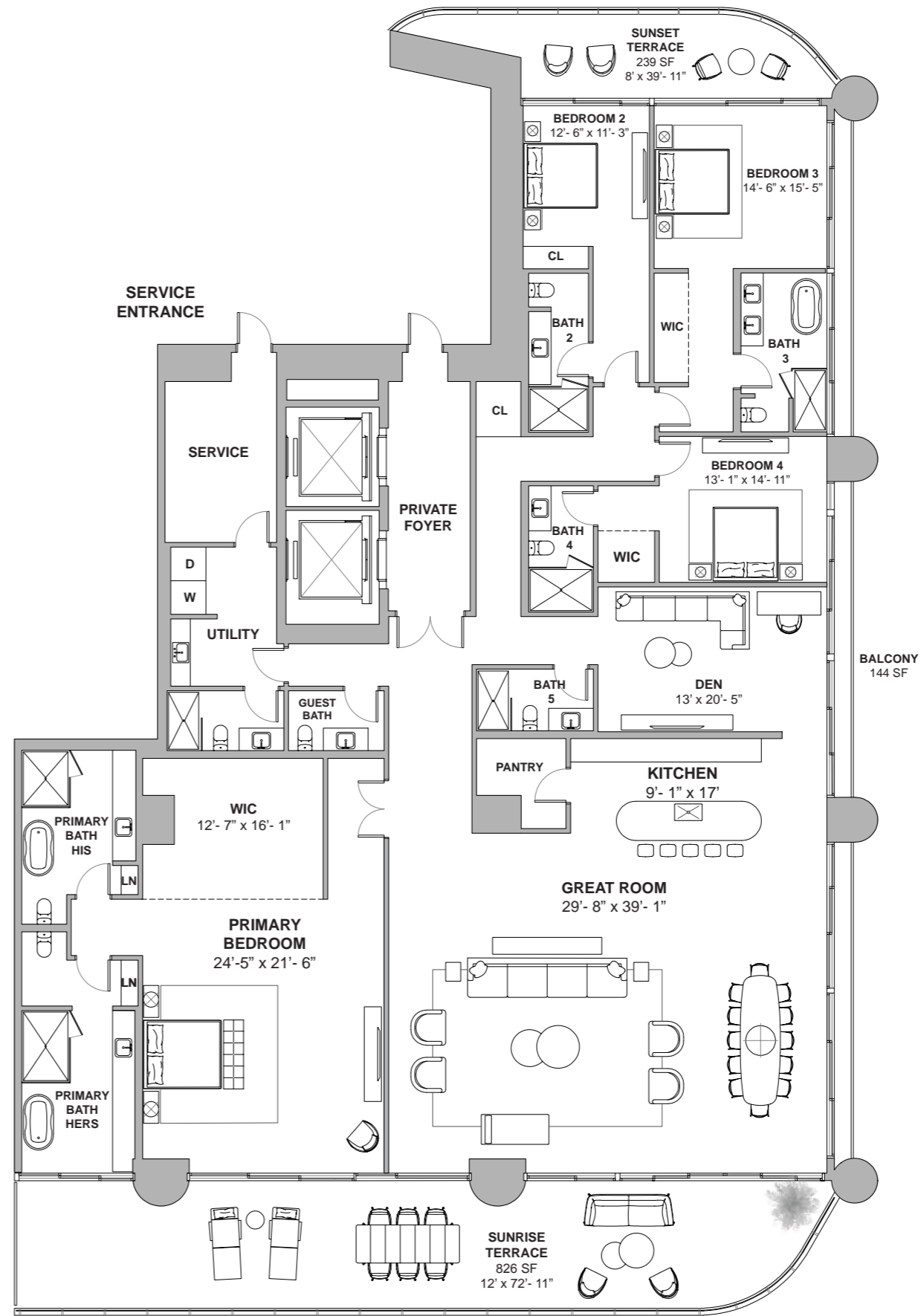
1,065 SF / 99 SM EXTERIOR

6,546 SF / 608 SM TOTAL



Atlantic Ocean

18801 Collins Ave, Sunny Isles Beach, FL 33160



Atlantic Ocean

DEVELOPMENT AND SALES  
**FORTUNE INTERNATIONAL GROUP** | **CHÂTEAU GROUP**

The St. Regis Residences, Sunny Isles Beach are not owned, developed or sold by Marriott International, Inc. or its affiliates ("MI"). La Playa Beach Associates, LLC uses the St. Regis marks under a license from MI, which has not confirmed the accuracy of any of the statements or representations made herein. This project is being developed by La Playa Beach Associates, LLC, which has the right to use the trademark names and logos of Fortune International Group and Chateau Group. ORAL REPRESENTATIONS CANNOT BE RELIED UPON AS CORRECTLY STATING THE REPRESENTATIONS OF THE DEVELOPER. FOR CORRECT REPRESENTATIONS, MAKE REFERENCE TO THIS BROCHURE AND TO THE DOCUMENTS REQUIRED BY SECTION 718.503, FLORIDA STATUTES, TO BE FURNISHED BY A DEVELOPER TO A BUYER OR LESSEE. This is not intended to be an offer to sell, or solicitation to buy, condominium units to residents of any jurisdiction where prohibited by law, and your eligibility for purchase will depend upon your state of residency. Stated dimensions are measured to the exterior boundaries of the exterior walls and the centerline of interior demising walls and in fact vary from the dimensions that would be determined by using the description and definition of the "Unit" set forth in the Declaration (which generally only includes the interior airspace between the perimeter walls and excludes interior structural components). For your reference, the area of the Unit, determined in accordance with those defined unit boundaries, is set forth on Exhibit "3" to the Declaration. Note that measurements of rooms set forth on this floor plan are generally taken at the greatest points of each given room (as if the room were a perfect rectangle), without regard for any cutouts. Accordingly, the area of the actual room will typically be smaller than the product obtained by multiplying the stated length times width. All dimensions are approximate and may vary with actual construction, and all floor plans and development plans are subject to change. Furniture is not included with the sale of the Units.



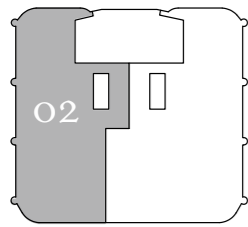
**ST REGIS**  
SUNNY ISLES BEACH ♦ MIAMI  
THE RESIDENCES

Collins Ave / AIA

## Residence 02

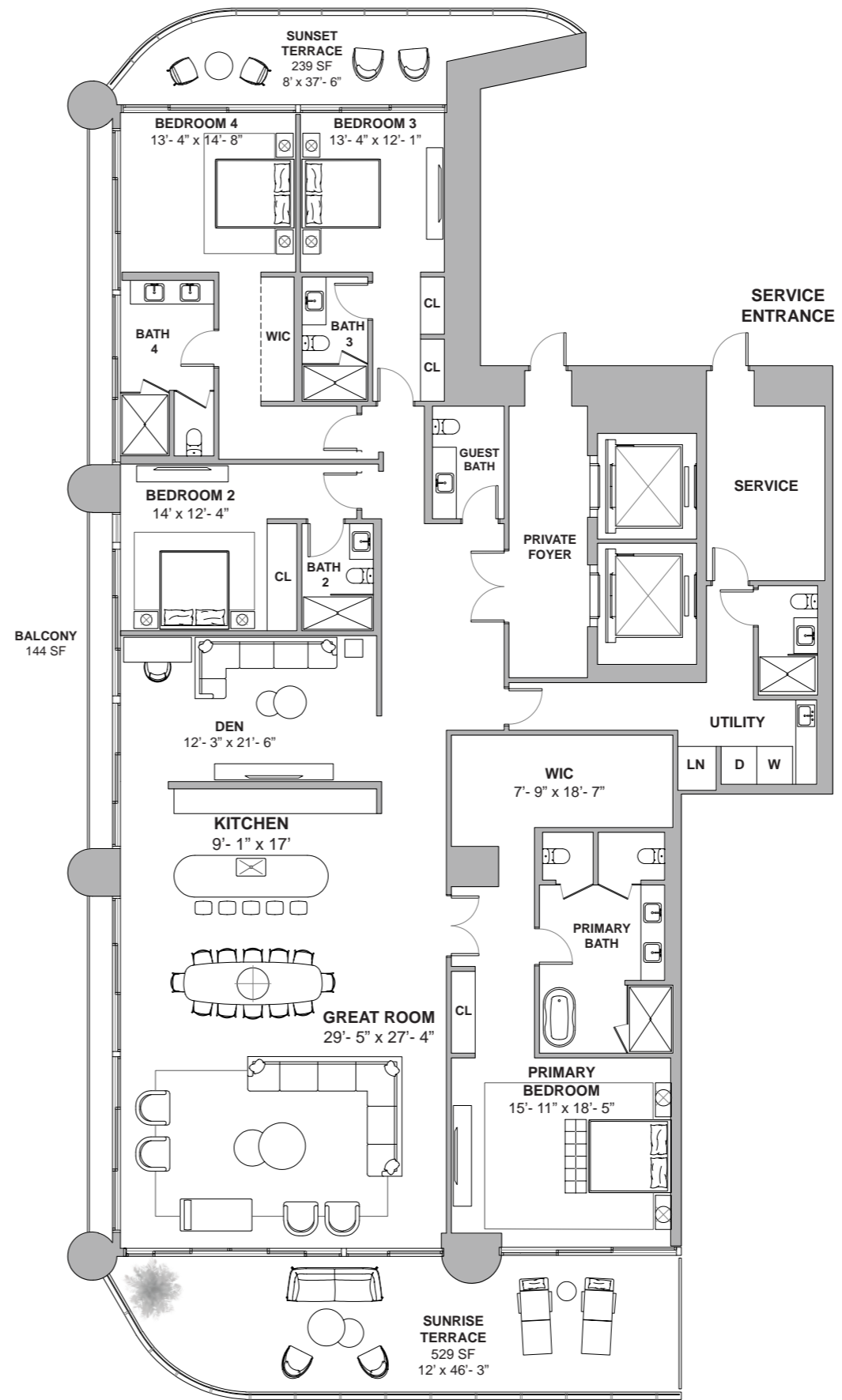
North Tower / Level 54

4 BEDROOMS + DEN  
5.5 BATHROOMS  
4,481 SF / 416 SM INTERIOR  
786 SF / 71 SM EXTERIOR  
5,249 SF / 488 SM TOTAL



Atlantic Ocean

18801 Collins Ave, Sunny Isles Beach, FL 33160



Atlantic Ocean

DEVELOPMENT AND SALES

**FORTUNE**  
INTERNATIONAL  
GROUP

**CHATEAU**  
GROUP

The St. Regis Residences, Sunny Isles Beach are not owned, developed or sold by Marriott International, Inc. or its affiliates ("MI"). La Playa Beach Associates, LLC uses the St. Regis marks under a license from MI, which has not confirmed the accuracy of any of the statements or representations made herein. This project is being developed by La Playa Beach Associates, LLC, which has the right to use the trademark names and logos of Fortune International Group and Chateau Group. ORAL REPRESENTATIONS CANNOT BE RELIED UPON AS CORRECTLY STATING THE REPRESENTATIONS OF THE DEVELOPER. FOR CORRECT REPRESENTATIONS, MAKE REFERENCE TO THIS BROCHURE AND TO THE DOCUMENTS REQUIRED BY SECTION 718.503, FLORIDA STATUTES, TO BE FURNISHED BY A DEVELOPER TO A BUYER OR LESSEE. This is not intended to be an offer to sell, or solicitation to buy, condominium units to residents of any jurisdiction where prohibited by law, and your eligibility for purchase will depend upon your state of residency. Stated dimensions are measured to the exterior boundaries of the exterior walls and the centerline of interior demising walls and in fact vary from the dimensions that would be determined by using the description and definition of the "Unit" set forth in the Declaration (which generally only includes the interior airspace between the perimeter walls and excludes interior structural components). For your reference, the area of the Unit, determined in accordance with those defined unit boundaries, is set forth on Exhibit "3" to the Declaration. Note that measurements of rooms set forth on this floor plan are generally taken at the greatest points of each given room (as if the room were a perfect rectangle), without regard for any cutouts. Accordingly, the area of the actual room will typically be smaller than the product obtained by multiplying the stated length times width. All dimensions are approximate and may vary with actual construction, and all floor plans and development plans are subject to change. Furniture is not included with the sale of the Units.





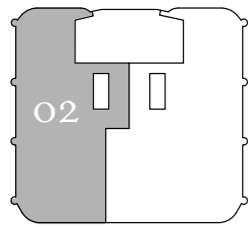
**ST REGIS**  
SUNNY ISLES BEACH ♦ MIAMI  
THE RESIDENCES

Collins Ave / AIA

## Residence 02

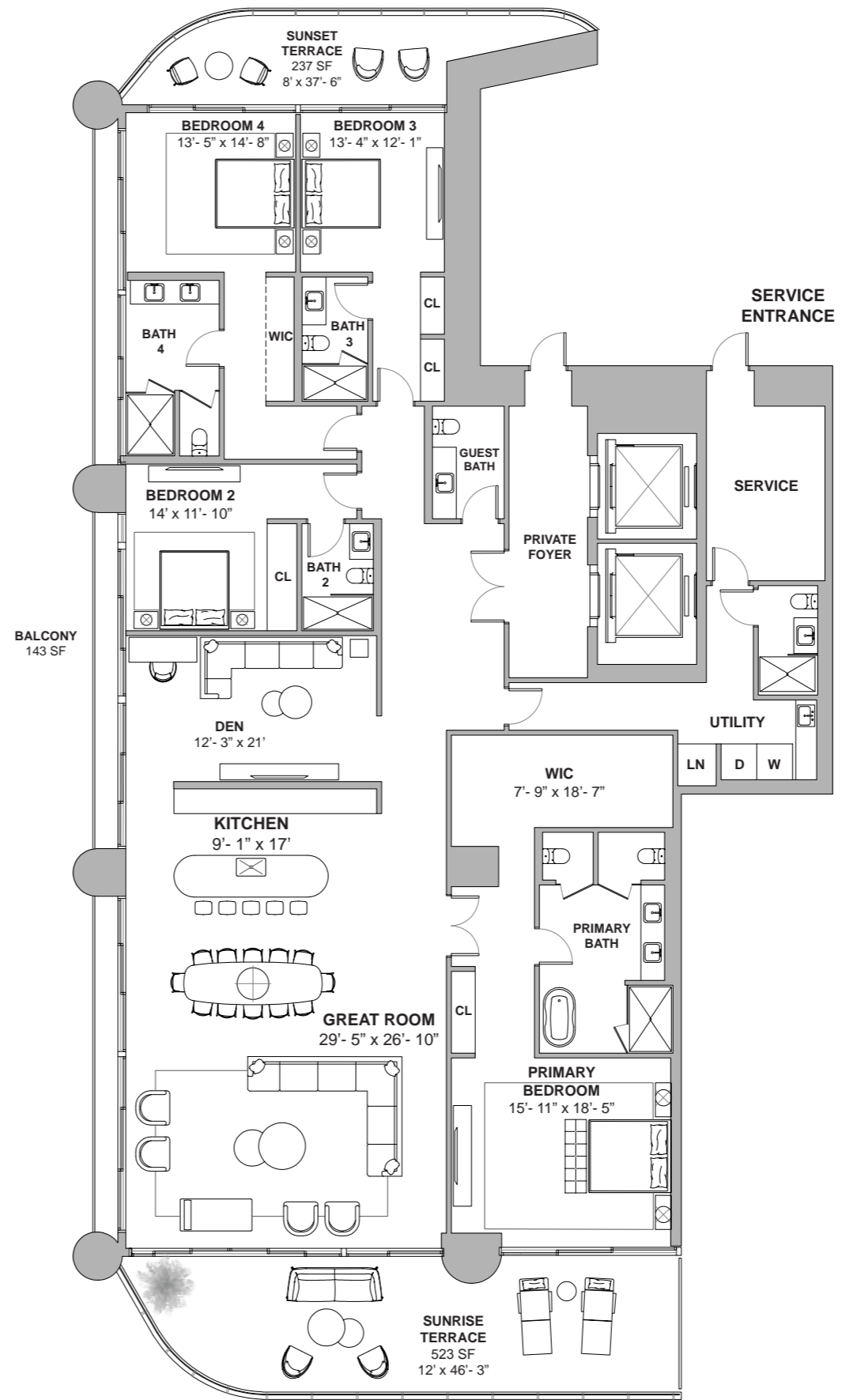
North Tower / Level 55

4 BEDROOMS + DEN  
5.5 BATHROOMS  
4,437 SF / 412 SM INTERIOR  
760 SF / 71 SM EXTERIOR  
5,197 SF / 483 SM TOTAL



Atlantic Ocean

18801 Collins Ave, Sunny Isles Beach, FL 33160



Atlantic Ocean

DEVELOPMENT AND SALES

**FORTUNE**  
INTERNATIONAL  
GROUP

**CHATEAU**  
GROUP

The St. Regis Residences, Sunny Isles Beach are not owned, developed or sold by Marriott International, Inc. or its affiliates ("MI"). La Playa Beach Associates, LLC uses the St. Regis marks under a license from MI, which has not confirmed the accuracy of any of the statements or representations made herein. This project is being developed by La Playa Beach Associates, LLC, which has the right to use the trademark names and logos of Fortune International Group and Chateau Group. ORAL REPRESENTATIONS CANNOT BE RELIED UPON AS CORRECTLY STATING THE REPRESENTATIONS OF THE DEVELOPER. FOR CORRECT REPRESENTATIONS, MAKE REFERENCE TO THIS BROCHURE AND TO THE DOCUMENTS REQUIRED BY SECTION 718.503, FLORIDA STATUTES, TO BE FURNISHED BY A DEVELOPER TO A BUYER OR LESSEE. This is not intended to be an offer to sell, or solicitation to buy, condominium units to residents of any jurisdiction where prohibited by law, and your eligibility for purchase will depend upon your state of residency. Stated dimensions are measured to the exterior boundaries of the exterior walls and the centerline of interior demising walls and in fact vary from the dimensions that would be determined by using the description and definition of the "Unit" set forth in the Declaration (which generally only includes the interior airspace between the perimeter walls and excludes interior structural components). For your reference, the area of the Unit, determined in accordance with those defined unit boundaries, is set forth on Exhibit "3" to the Declaration. Note that measurements of rooms set forth on this floor plan are generally taken at the greatest points of each given room (as if the room were a perfect rectangle), without regard for any cutouts. Accordingly, the area of the actual room will typically be smaller than the product obtained by multiplying the stated length times width. All dimensions are approximate and may vary with actual construction, and all floor plans and development plans are subject to change. Furniture is not included with the sale of the Units.



**ST REGIS**  
SUNNY ISLES BEACH ♦ MIAMI  
THE RESIDENCES

Collins Ave / AIA

# Residence 01

North Tower / Level 56

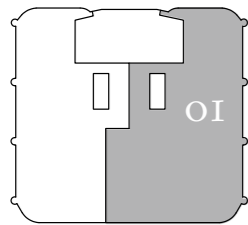
4 BEDROOMS + DEN

7.5 BATHROOMS

5,383 SF / 500 SM INTERIOR

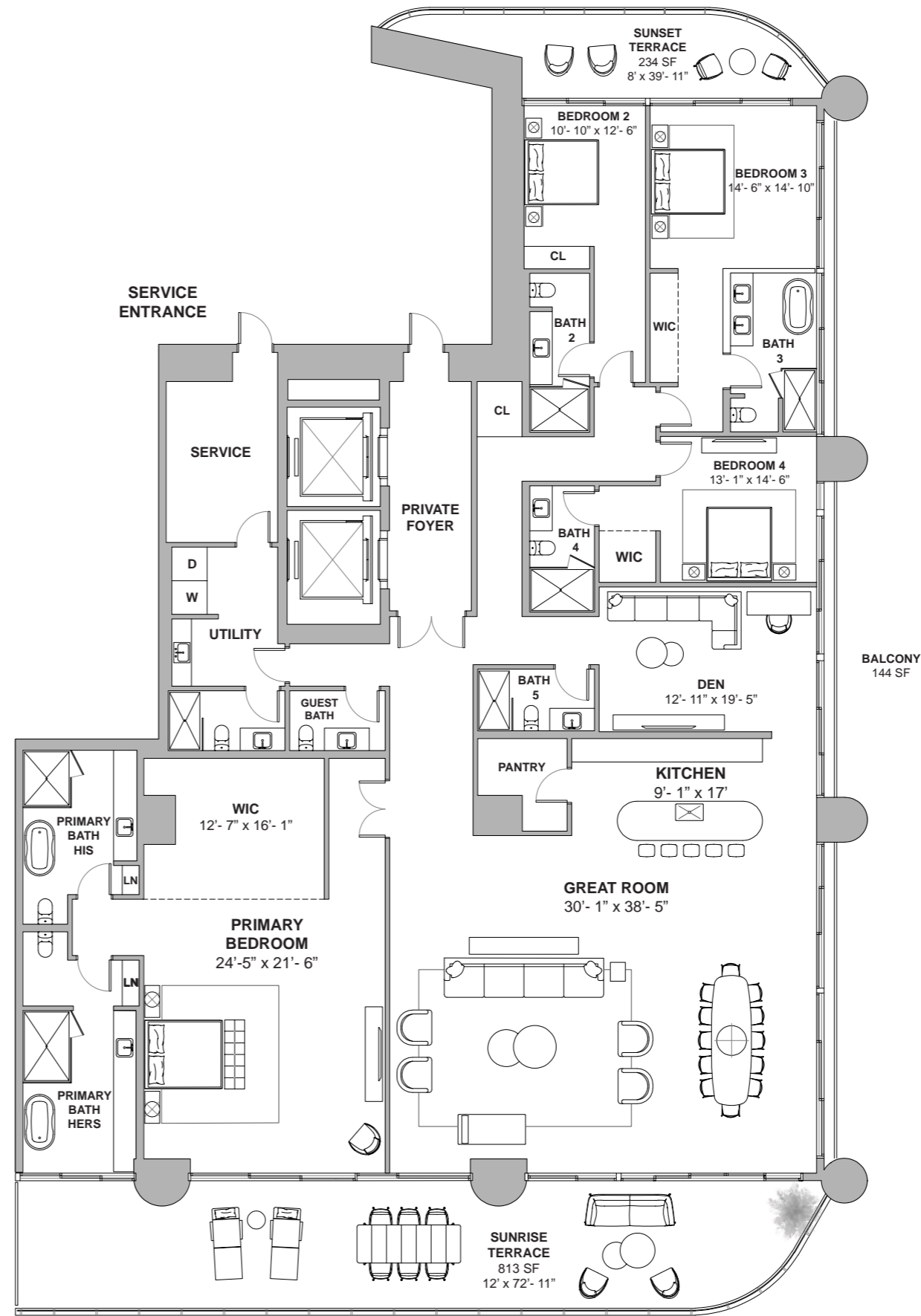
1,047 SF / 97 SM EXTERIOR

6,430 SF / 597 SM TOTAL



Atlantic Ocean

18801 Collins Ave, Sunny Isles Beach, FL 33160



Atlantic Ocean

DEVELOPMENT AND SALES  
**FORTUNE INTERNATIONAL GROUP** | **CHÂTEAU GROUP**

The St. Regis Residences, Sunny Isles Beach are not owned, developed or sold by Marriott International, Inc. or its affiliates ("MI"). La Playa Beach Associates, LLC uses the St. Regis marks under a license from MI, which has not confirmed the accuracy of any of the statements or representations made herein. This project is being developed by La Playa Beach Associates, LLC, which has the right to use the trademark names and logos of Fortune International Group and Chateau Group. ORAL REPRESENTATIONS CANNOT BE RELIED UPON AS CORRECTLY STATING THE REPRESENTATIONS OF THE DEVELOPER. FOR CORRECT REPRESENTATIONS, MAKE REFERENCE TO THIS BROCHURE AND TO THE DOCUMENTS REQUIRED BY SECTION 718.503, FLORIDA STATUTES, TO BE FURNISHED BY A DEVELOPER TO A BUYER OR LESSEE. This is not intended to be an offer to sell, or solicitation to buy, condominium units to residents of any jurisdiction where prohibited by law, and your eligibility for purchase will depend upon your state of residency. Stated dimensions are measured to the exterior boundaries of the exterior walls and the centerline of interior demising walls and in fact vary from the dimensions that would be determined by using the description and definition of the "Unit" set forth in the Declaration (which generally only includes the interior airspace between the perimeter walls and excludes interior structural components). For your reference, the area of the Unit, determined in accordance with those defined unit boundaries, is set forth on Exhibit "3" to the Declaration. Note that measurements of rooms set forth on this floor plan are generally taken at the greatest points of each given room (as if the room were a perfect rectangle), without regard for any cutouts. Accordingly, the area of the actual room will typically be smaller than the product obtained by multiplying the stated length times width. All dimensions are approximate and may vary with actual construction, and all floor plans and development plans are subject to change. Furniture is not included with the sale of the Units.



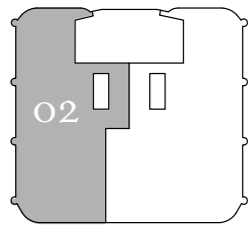
**ST REGIS**  
SUNNY ISLES BEACH ♦ MIAMI  
THE RESIDENCES

Collins Ave / AIA

## Residence 02

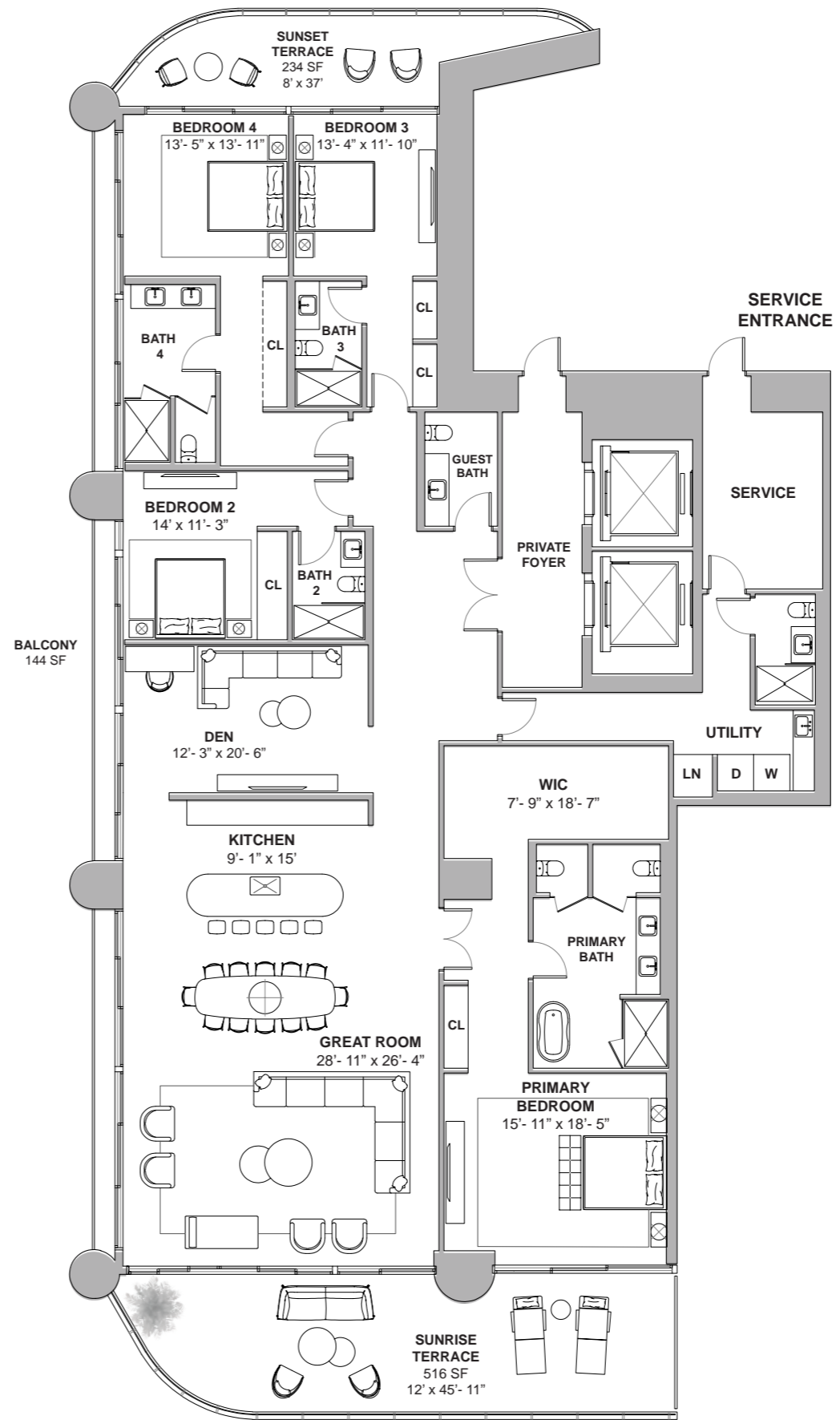
North Tower / Level 56

4 BEDROOMS + DEN  
5.5 BATHROOMS  
4,384 SF / 407 SM INTERIOR  
750 SF / 70 SM EXTERIOR  
5,134 SF / 477 SM TOTAL



Atlantic Ocean

18801 Collins Ave, Sunny Isles Beach, FL 33160



Atlantic Ocean

DEVELOPMENT AND SALES

**FORTUNE**  
INTERNATIONAL  
GROUP

**CHATEAU**  
GROUP

The St. Regis Residences, Sunny Isles Beach are not owned, developed or sold by Marriott International, Inc. or its affiliates ("MI"). La Playa Beach Associates, LLC uses the St. Regis marks under a license from MI, which has not confirmed the accuracy of any of the statements or representations made herein. This project is being developed by La Playa Beach Associates, LLC, which has the right to use the trademark names and logos of Fortune International Group and Chateau Group. ORAL REPRESENTATIONS CANNOT BE RELIED UPON AS CORRECTLY STATING THE REPRESENTATIONS OF THE DEVELOPER. FOR CORRECT REPRESENTATIONS, MAKE REFERENCE TO THIS BROCHURE AND TO THE DOCUMENTS REQUIRED BY SECTION 718.503, FLORIDA STATUTES, TO BE FURNISHED BY A DEVELOPER TO A BUYER OR LESSEE. This is not intended to be an offer to sell, or solicitation to buy, condominium units to residents of any jurisdiction where prohibited by law, and your eligibility for purchase will depend upon your state of residency. Stated dimensions are measured to the exterior boundaries of the exterior walls and the centerline of interior demising walls and in fact vary from the dimensions that would be determined by using the description and definition of the "Unit" set forth in the Declaration (which generally only includes the interior airspace between the perimeter walls and excludes interior structural components). For your reference, the area of the Unit, determined in accordance with those defined unit boundaries, is set forth on Exhibit "3" to the Declaration. Note that measurements of rooms set forth on this floor plan are generally taken at the greatest points of each given room (as if the room were a perfect rectangle), without regard for any cutouts. Accordingly, the area of the actual room will typically be smaller than the product obtained by multiplying the stated length times width. All dimensions are approximate and may vary with actual construction, and all floor plans and development plans are subject to change. Furniture is not included with the sale of the Units.



**ST REGIS**  
SUNNY ISLES BEACH ♦ MIAMI  
THE RESIDENCES

Collins Ave / AIA

# Residence 01

North Tower / Level 57

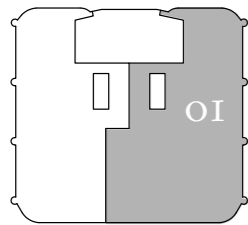
4 BEDROOMS + DEN

7.5 BATHROOMS

5,253 SF / 488 SM INTERIOR

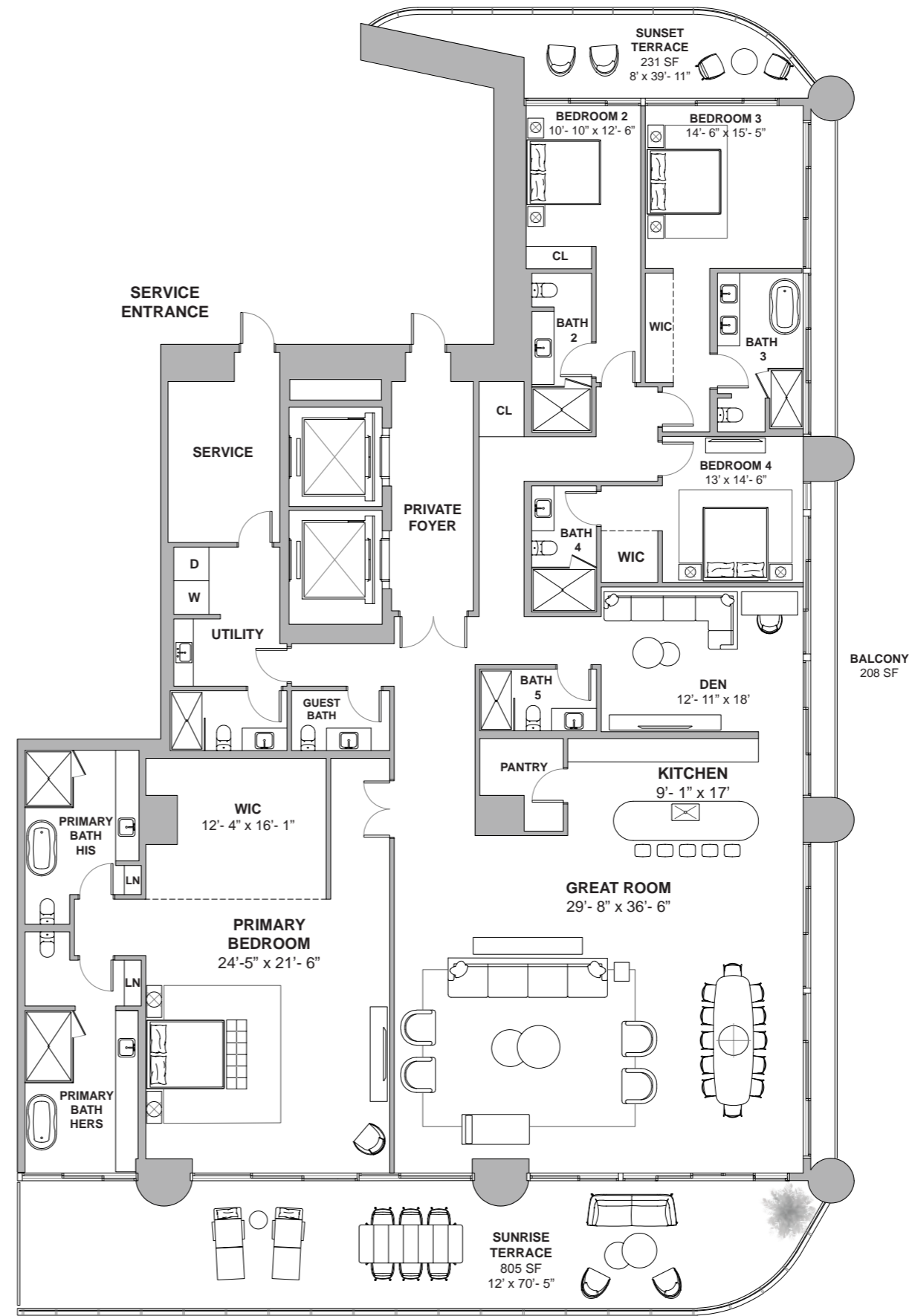
1,036 SF / 96 SM EXTERIOR

6,289 SF / 584 SM TOTAL



Atlantic Ocean

18801 Collins Ave, Sunny Isles Beach, FL 33160



DEVELOPMENT AND SALES

**FORTUNE**  
INTERNATIONAL  
GROUP

**CHATEAU**  
GROUP

Atlantic Ocean

The St. Regis Residences, Sunny Isles Beach are not owned, developed or sold by Marriott International, Inc. or its affiliates ("MI"). La Playa Beach Associates, LLC uses the St. Regis marks under a license from MI, which has not confirmed the accuracy of any of the statements or representations made herein. This project is being developed by La Playa Beach Associates, LLC, which has the right to use the trademark names and logos of Fortune International Group and Chateau Group. ORAL REPRESENTATIONS CANNOT BE RELIED UPON AS CORRECTLY STATING THE REPRESENTATIONS OF THE DEVELOPER. FOR CORRECT REPRESENTATIONS, MAKE REFERENCE TO THIS BROCHURE AND TO THE DOCUMENTS REQUIRED BY SECTION 718.503, FLORIDA STATUTES, TO BE FURNISHED BY A DEVELOPER TO A BUYER OR LESSEE. This is not intended to be an offer to sell, or solicitation to buy, condominium units to residents of any jurisdiction where prohibited by law, and your eligibility for purchase will depend upon your state of residency. Stated dimensions are measured to the exterior boundaries of the exterior walls and the centerline of interior demising walls and in fact vary from the dimensions that would be determined by using the description and definition of the "Unit" set forth in the Declaration (which generally only includes the interior airspace between the perimeter walls and excludes interior structural components). For your reference, the area of the Unit, determined in accordance with those defined unit boundaries, is set forth on Exhibit "3" to the Declaration. Note that measurements of rooms set forth on this floor plan are generally taken at the greatest points of each given room (as if the room were a perfect rectangle), without regard for any cutouts. Accordingly, the area of the actual room will typically be smaller than the product obtained by multiplying the stated length times width. All dimensions are approximate and may vary with actual construction, and all floor plans and development plans are subject to change. Furniture is not included with the sale of the Units.



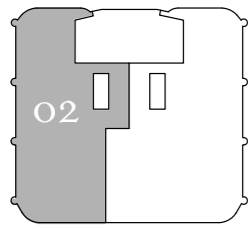
**ST REGIS**  
SUNNY ISLES BEACH ♦ MIAMI  
THE RESIDENCES

Collins Ave / AIA

# Residence 02

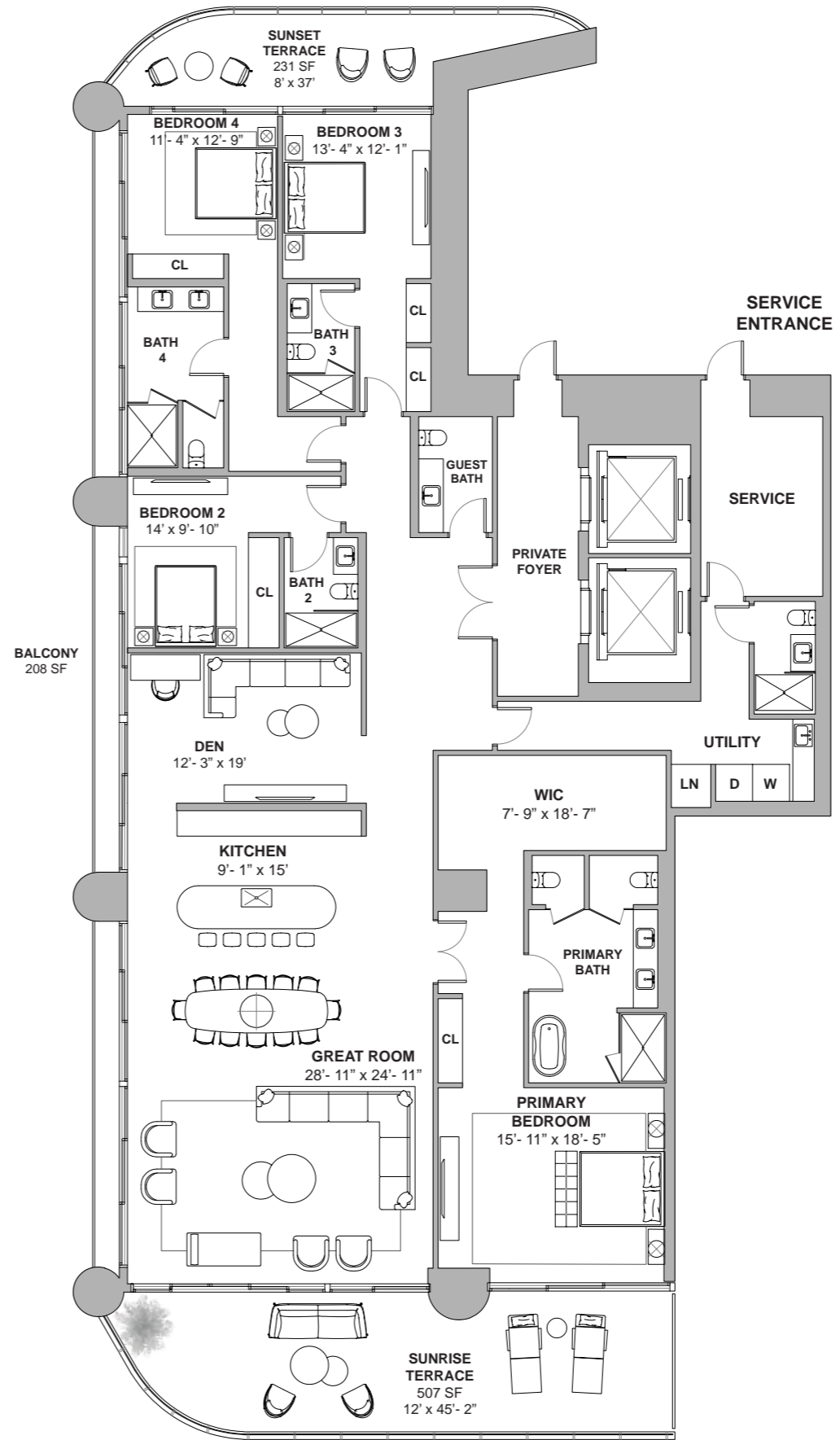
North Tower / Level 57

- 4 BEDROOMS + DEN
- 5.5 BATHROOMS
- 4,244 SF / 394 SM INTERIOR
- 738 SF / 69 SM EXTERIOR
- 4,982 SF / 463 SM TOTAL



Atlantic Ocean

18801 Collins Ave, Sunny Isles Beach, FL 33160



Atlantic Ocean

DEVELOPMENT AND SALES



The St. Regis Residences, Sunny Isles Beach are not owned, developed or sold by Marriott International, Inc. or its affiliates ("MI"). La Playa Beach Associates, LLC uses the St. Regis marks under a license from MI, which has not confirmed the accuracy of any of the statements or representations made herein. This project is being developed by La Playa Beach Associates, LLC, which has the right to use the trademark names and logos of Fortune International Group and Chateau Group. ORAL REPRESENTATIONS CANNOT BE RELIED UPON AS CORRECTLY STATING THE REPRESENTATIONS OF THE DEVELOPER. FOR CORRECT REPRESENTATIONS, MAKE REFERENCE TO THIS BROCHURE AND TO THE DOCUMENTS REQUIRED BY SECTION 718.503, FLORIDA STATUTES, TO BE FURNISHED BY A DEVELOPER TO A BUYER OR LESSEE. This is not intended to be an offer to sell, or solicitation to buy, condominium units to residents of any jurisdiction where prohibited by law, and your eligibility for purchase will depend upon your state of residency. Stated dimensions are measured to the exterior boundaries of the exterior walls and the centerline of interior demising walls and in fact vary from the dimensions that would be determined by using the description and definition of the "Unit" set forth in the Declaration (which generally only includes the interior airspace between the perimeter walls and excludes interior structural components). For your reference, the area of the Unit, determined in accordance with those defined unit boundaries, is set forth on Exhibit "3" to the Declaration. Note that measurements of rooms set forth on this floor plan are generally taken at the greatest points of each given room (as if the room were a perfect rectangle), without regard for any cutouts. Accordingly, the area of the actual room will typically be smaller than the product obtained by multiplying the stated length times width. All dimensions are approximate and may vary with actual construction, and all floor plans and development plans are subject to change. Furniture is not included with the sale of the Units.