

01-A RESIDENCE

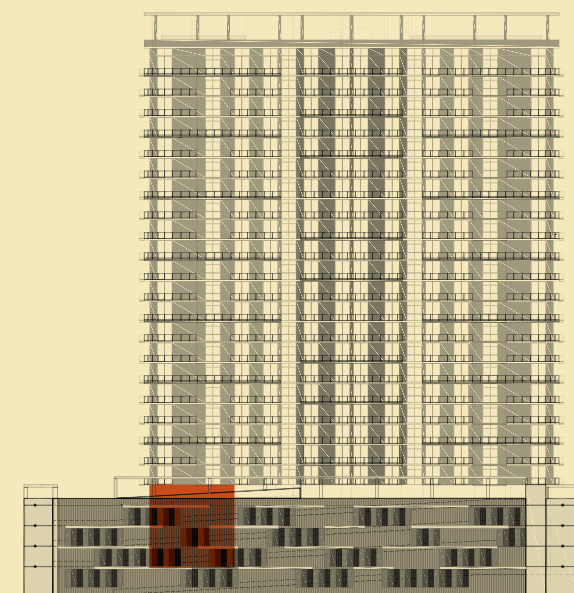
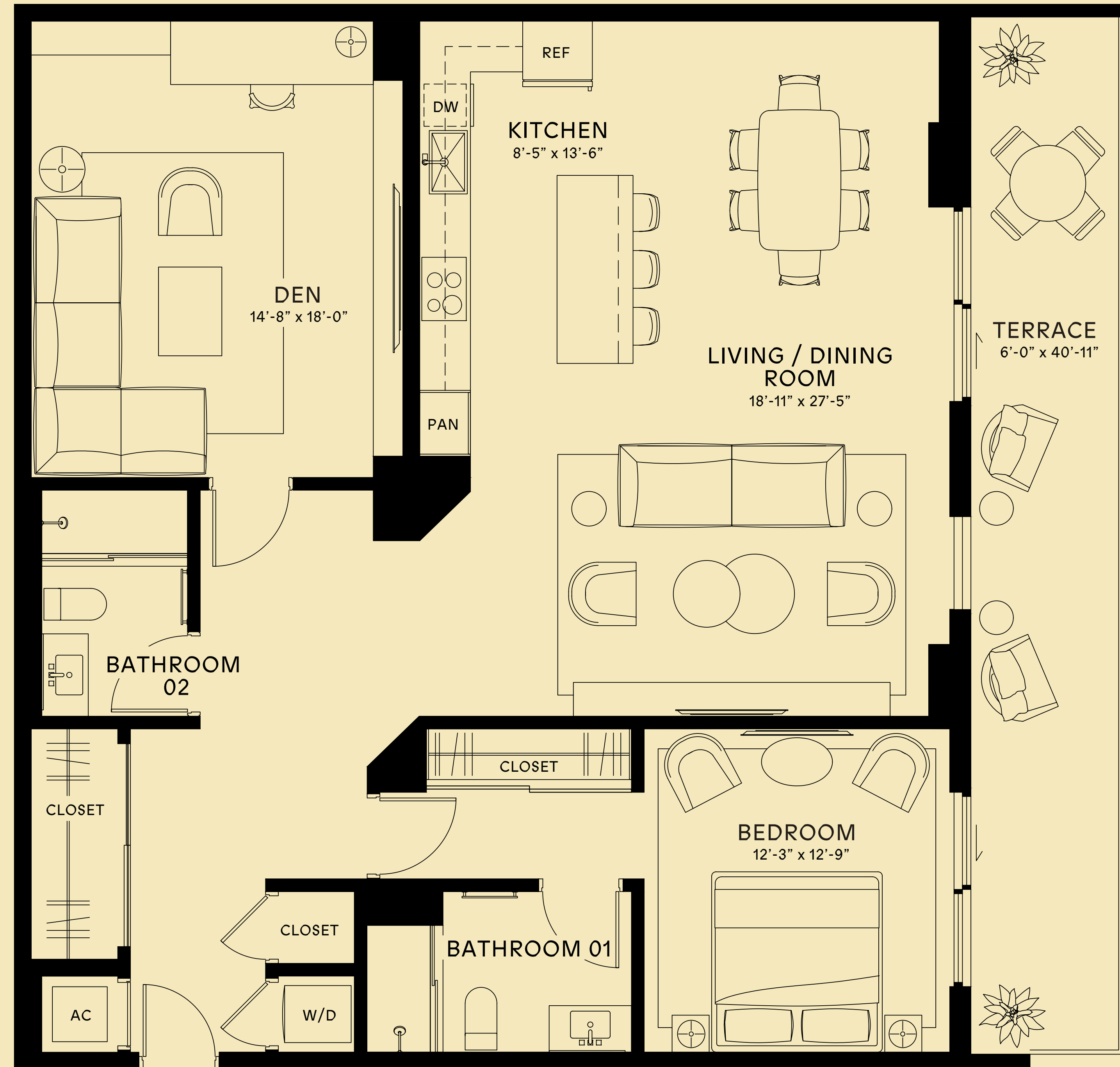
ONE BEDROOM + DEN
TWO BATHROOMS

FLOORS: 2-5

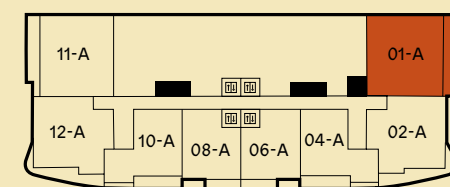
INTERIOR: 1,197 SQ FT 111 M²
EXTERIOR: 247 SQ FT 23 M²

TOTAL: 1,444 SQ FT 134 M²

MONDRIAN
HALLANDALE BEACH RESIDENCES



WEST FAÇADE



Stated dimensions are measured to the exterior boundaries of the exterior walls and the centerline of interior demising walls and in fact vary from the dimensions that would be determined by using the description and definition of the "Unit" set forth in the Declaration (which generally only includes the interior airspace between the perimeter walls and excludes interior structural components). For your reference, the area of the Unit, determined in accordance with those definitions and boundaries, is set forth on Exhibit "3" to the Declaration. Note that measurements of rooms set forth on this floor plan are generally taken at the greatest points of each given room (as if the room were a perfect rectangle), without regard for any cutouts. Accordingly, the area of the actual room will typically be smaller than the product obtained by multiplying the stated length times width. All dimensions are approximate and may vary with actual construction, and all floor plans and development plans are subject to change. The size and configuration of balconies and terraces varies slightly throughout the building. The balcony depicted above is a "typical" configuration, but actual balconies may be smaller or larger. For the actual size and configuration of the balcony for your Unit, see Exhibit "2" to the Declaration of Condominium.

04-A RESIDENCE

ONE BEDROOM + DEN
TWO BATHROOMS

FLOOR: 2

INTERIOR: 1,081 SQ FT 100 M²
EXTERIOR: 184 SQ FT 17 M²

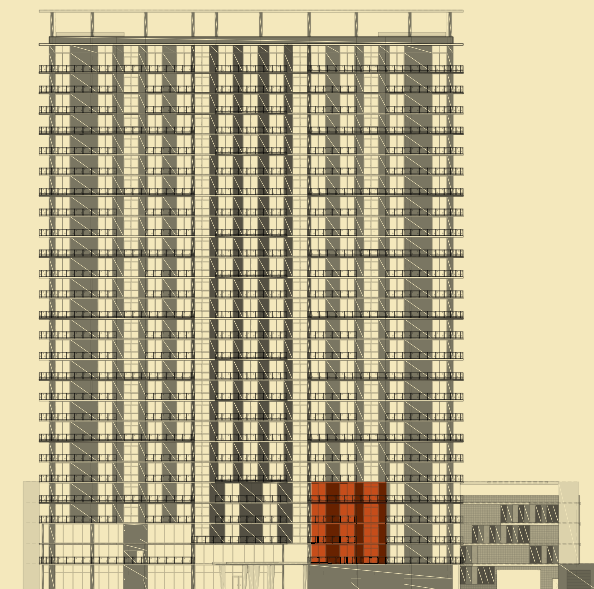
TOTAL: 1,265 SQ FT 117 M²

FLOORS: 3, 4, 5

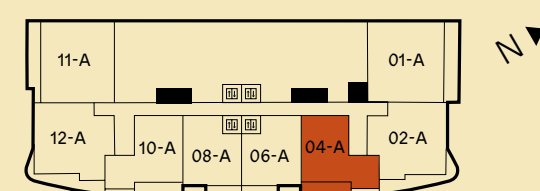
INTERIOR: 1,081 SQ FT 100 M²
EXTERIOR: 147 SQ FT 14 M²

TOTAL: 1,228 SQ FT 114 M²

MONDRIAN HALLANDALE BEACH RESIDENCES



EAST FAÇADE



Stated dimensions are measured to the exterior boundaries of the exterior walls and the centerline of interior demising walls and in fact vary from the dimensions that would be determined by using the description and definition of the "Unit" set forth in the Declaration (which generally only includes the interior airspace between the perimeter walls and excludes interior structural components). For your reference, the area of the Unit, determined in accordance with those defined unit boundaries, is set forth on Exhibit "3" to the Declaration. Note that measurements of rooms set forth on this floor plan are generally taken at the greatest points of each given room (as if the room were a perfect rectangle), without regard for any cutouts. Accordingly, the area of the actual room will typically be smaller than the product obtained by multiplying the stated length times width. All dimensions are approximate and may vary with actual construction, and all floor plans and development plans are subject to change. The size and configuration of balconies and terraces varies slightly throughout the building. The balcony depicted above is a "typical" configuration, but actual balconies may be smaller or larger. For the actual size and configuration of the balcony for your Unit, see Exhibit "2" to the Declaration of Condominium.

05 RESIDENCE

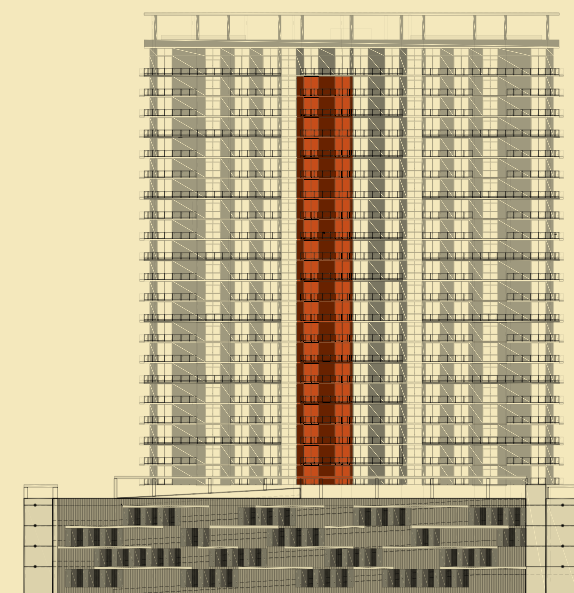
ONE BEDROOM + DEN
ONE BATHROOM

FLOORS: 6-26

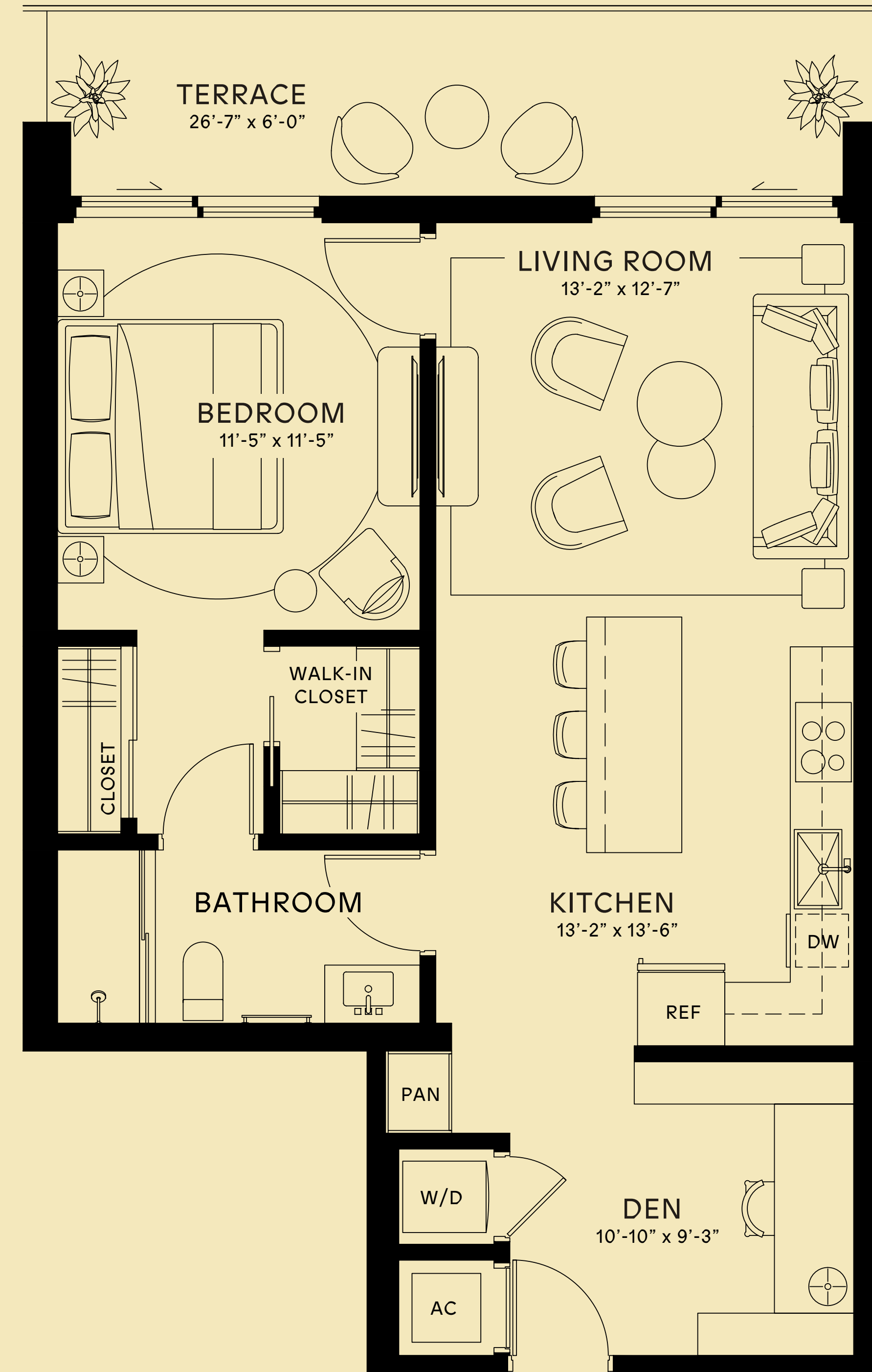
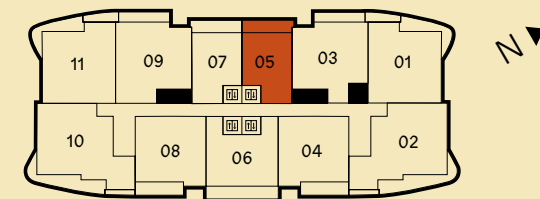
INTERIOR: 859 SQ FT 80 M²
EXTERIOR: 154 SQ FT 14 M²

TOTAL: 1,031 SQ FT 94 M²

MONDRIAN HALLANDALE BEACH RESIDENCES



WEST FAÇADE



Stated dimensions are measured to the exterior boundaries of the exterior walls and the centerline of interior demising walls and in fact vary from the dimensions that would be determined by using the description and definition of the "Unit" set forth in the Declaration (which generally only includes the interior airspace between the perimeter walls and excludes interior structural components). For your reference, the area of the Unit, determined in accordance with those defined unit boundaries, is set forth on Exhibit "3" to the Declaration. Note that measurements of rooms set forth on this floor plan are generally taken at the greatest points of each given room (as if the room were a perfect rectangle), without regard for any cutouts. Accordingly, the area of the actual room will typically be smaller than the product obtained by multiplying the stated length times width. All dimensions are approximate and may vary with actual construction, and all floor plans and development plans are subject to change. The size and configuration of balconies and terraces varies slightly throughout the building. The balcony depicted above is a "typical" configuration, but actual balconies may be smaller or larger. For the actual size and configuration of the balcony for your Unit, see Exhibit "2" to the Declaration of Condominium.

10-A RESIDENCE

ONE BEDROOM + DEN
TWO BATHROOMS

FLOOR: 4

INTERIOR: 1,081 SQ FT 100 M²
EXTERIOR: 147 SQ FT 14 M²

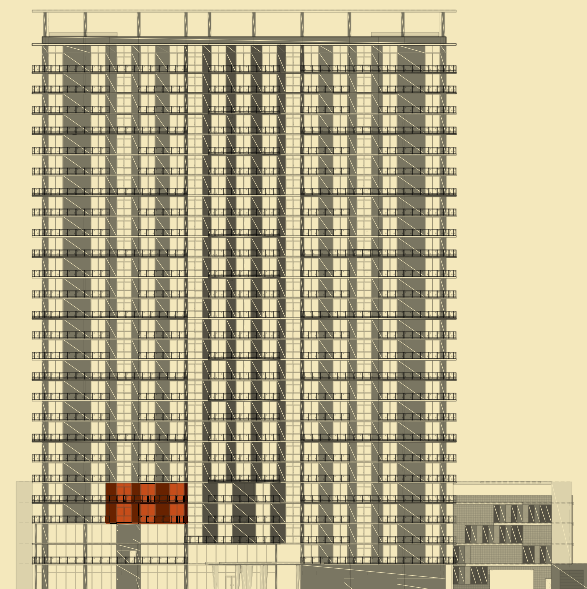
TOTAL: 1,228 SQ FT 114 M²

FLOOR: 5

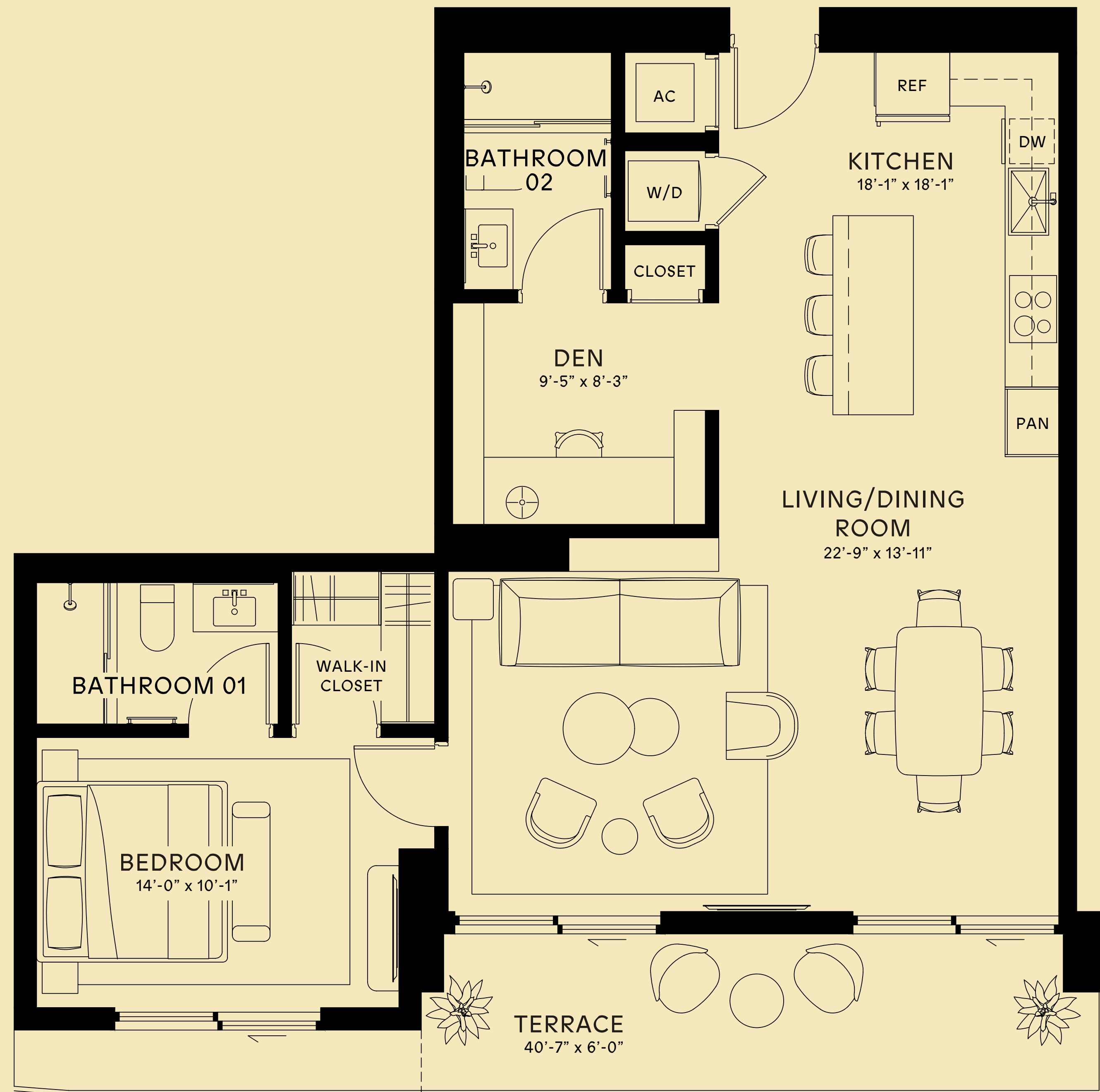
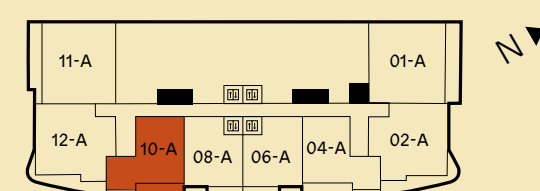
INTERIOR: 1,081 SQ FT 100 M²
EXTERIOR: 184 SQ FT 17 M²

TOTAL: 1,265 SQ FT 117 M²

MONDRIAN HALLANDALE BEACH RESIDENCES



EAST FAÇADE



Stated dimensions are measured to the exterior boundaries of the exterior walls and the centerline of interior demising walls and in fact vary from the dimensions that would be determined by using the description and definition of the "Unit" set forth in the Declaration (which generally only includes the interior airspace between the perimeter walls and excludes interior structural components). For your reference, the area of the Unit, determined in accordance with those defined unit boundaries, is set forth on Exhibit "3" to the Declaration. Note that measurements of rooms set forth on this floor plan are generally taken at the greatest points of each given room (as if the room were a perfect rectangle), without regard for any cutouts. Accordingly, the area of the actual room will typically be smaller than the product obtained by multiplying the stated length times width. All dimensions are approximate and may vary with actual construction, and all floor plans and development plans are subject to change. The size and configuration of balconies and terraces varies slightly throughout the building. The balcony depicted above is a "typical" configuration, but actual balconies may be smaller or larger. For the actual size and configuration of the balcony for your Unit, see Exhibit "2" to the Declaration of Condominium.

11-A RESIDENCE

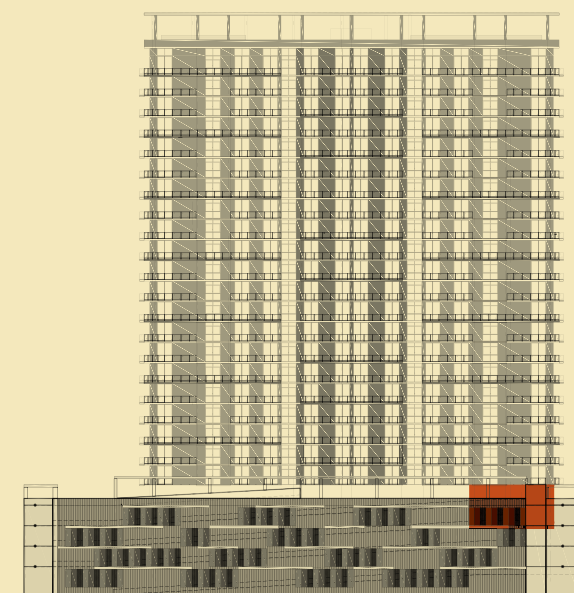
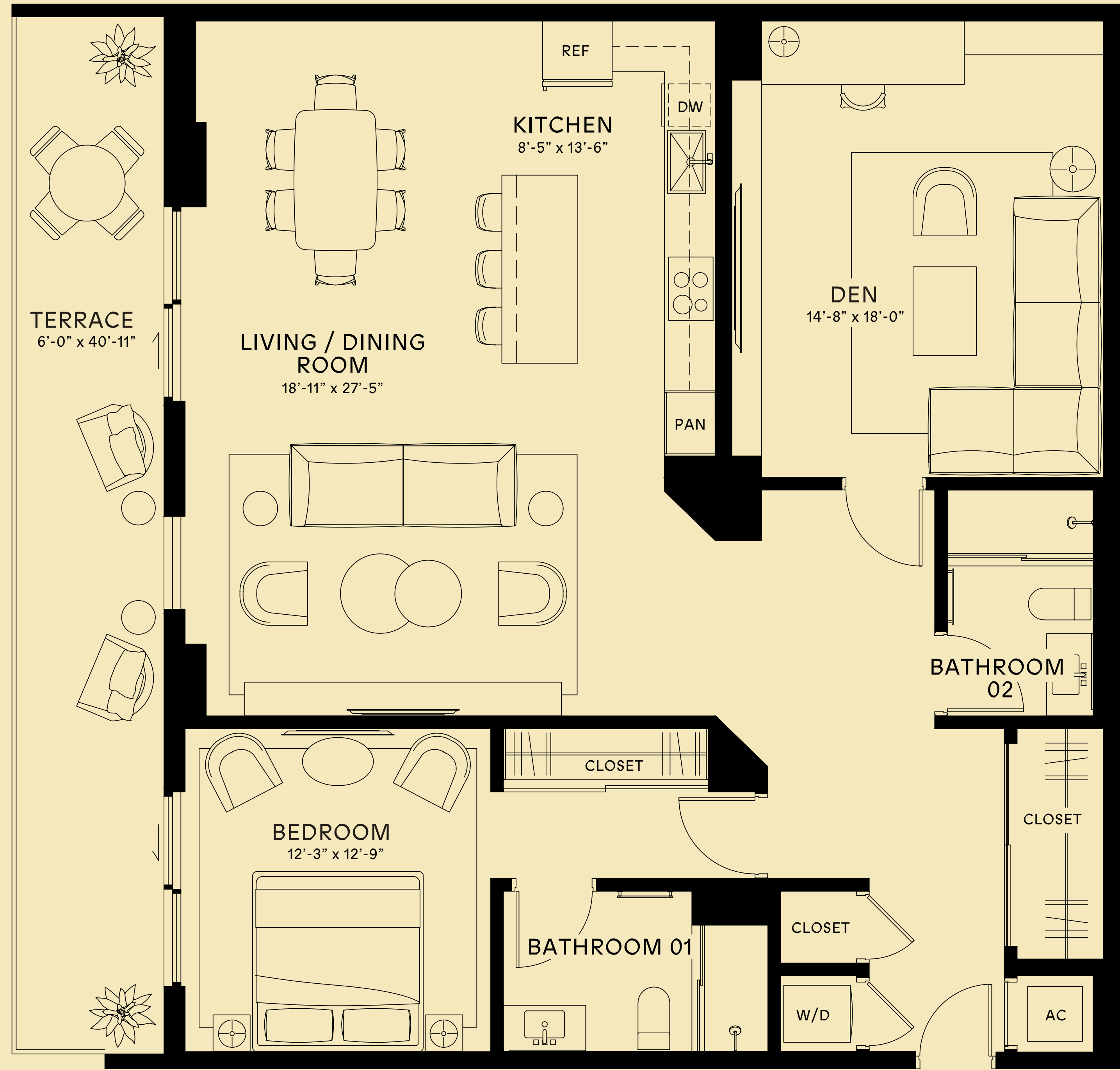
ONE BEDROOM + DEN
TWO BATHROOMS

FLOORS: 4, 5

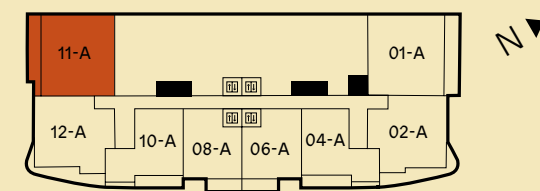
INTERIOR: 1,197 SQ FT 111 M²
EXTERIOR: 247 SQ FT 23 M²

TOTAL: 1,444 SQ FT 134 M²

MONDRIAN HALLANDALE BEACH RESIDENCES



WEST FAÇADE



Stated dimensions are measured to the exterior boundaries of the exterior walls and the centerline of interior demising walls and in fact vary from the dimensions that would be determined by using the description and definition of the "Unit" set forth in the Declaration (which generally only includes the interior airspace between the perimeter walls and excludes interior structural components). For your reference, the area of the Unit, determined in accordance with those defined unit boundaries, is set forth on Exhibit "3" to the Declaration. Note that measurements of rooms set forth on this floor plan are generally taken at the greatest points of each given room (as if the room were a perfect rectangle), without regard for any cutouts. Accordingly, the area of the actual room will typically be smaller than the product obtained by multiplying the stated length times width. All dimensions are approximate and may vary with actual construction, and all floor plans and development plans are subject to change. The size and configuration of balconies and terraces varies slightly throughout the building. The balcony depicted above is a "typical" configuration, but actual balconies may be smaller or larger. For the actual size and configuration of the balcony for your Unit, see Exhibit "2" to the Declaration of Condominium.