



Residence A

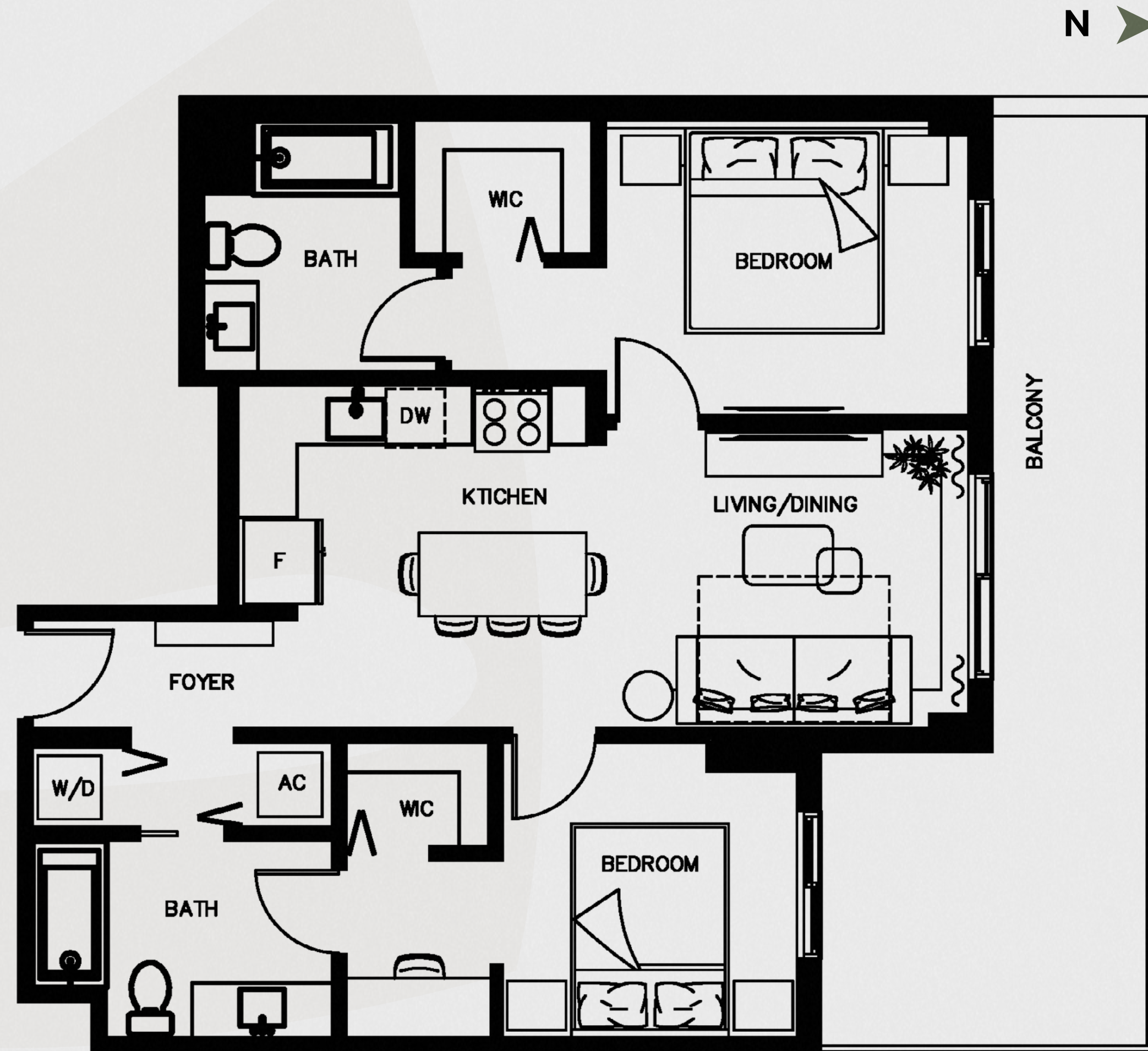
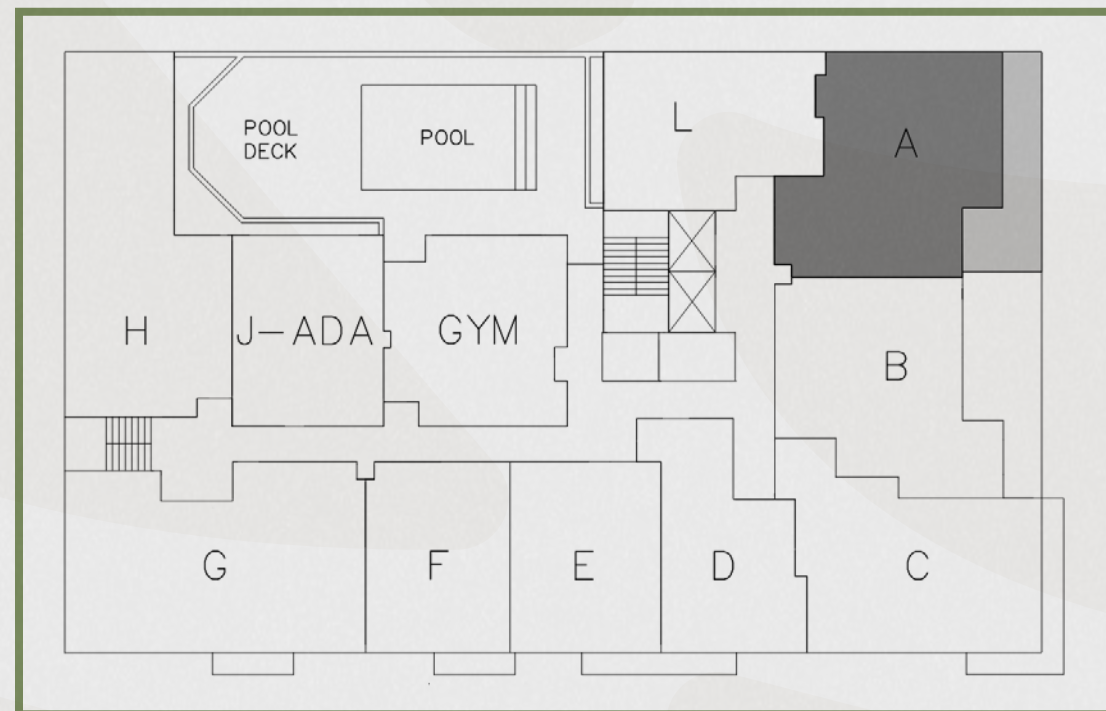
2 BEDROOMS / 2 BATHROOMS

UNIT 401

INTERIOR: 900 SF / 84 m²

BALCONY: 238 SF

TOTAL: 1138 SF / 106 m²



BOTANIC
RESIDENCES

The dimensions stated for this unit floor plan are approximate because there are various recognized methods for calculating the square footage of a unit. The square footage stated here is calculated from the exterior boundaries of the exterior walls to the centerline of interior demising walls without deductions for cutouts, curves, or architectural features. This method typically results in quoted dimensions greater than the dimensions that would be determined by using other accepted methods. The definition of "Unit" and the calculation method to be relied upon is set forth by the Developer, in Developer's Prospectus and the method set forth in the Developer's Prospectus may result in a square footage calculation less than the method used here. Consult the Developer's Prospectus for information on what is offered with the Unit and the calculation of the Unit square footage and dimensions.



Residence A1

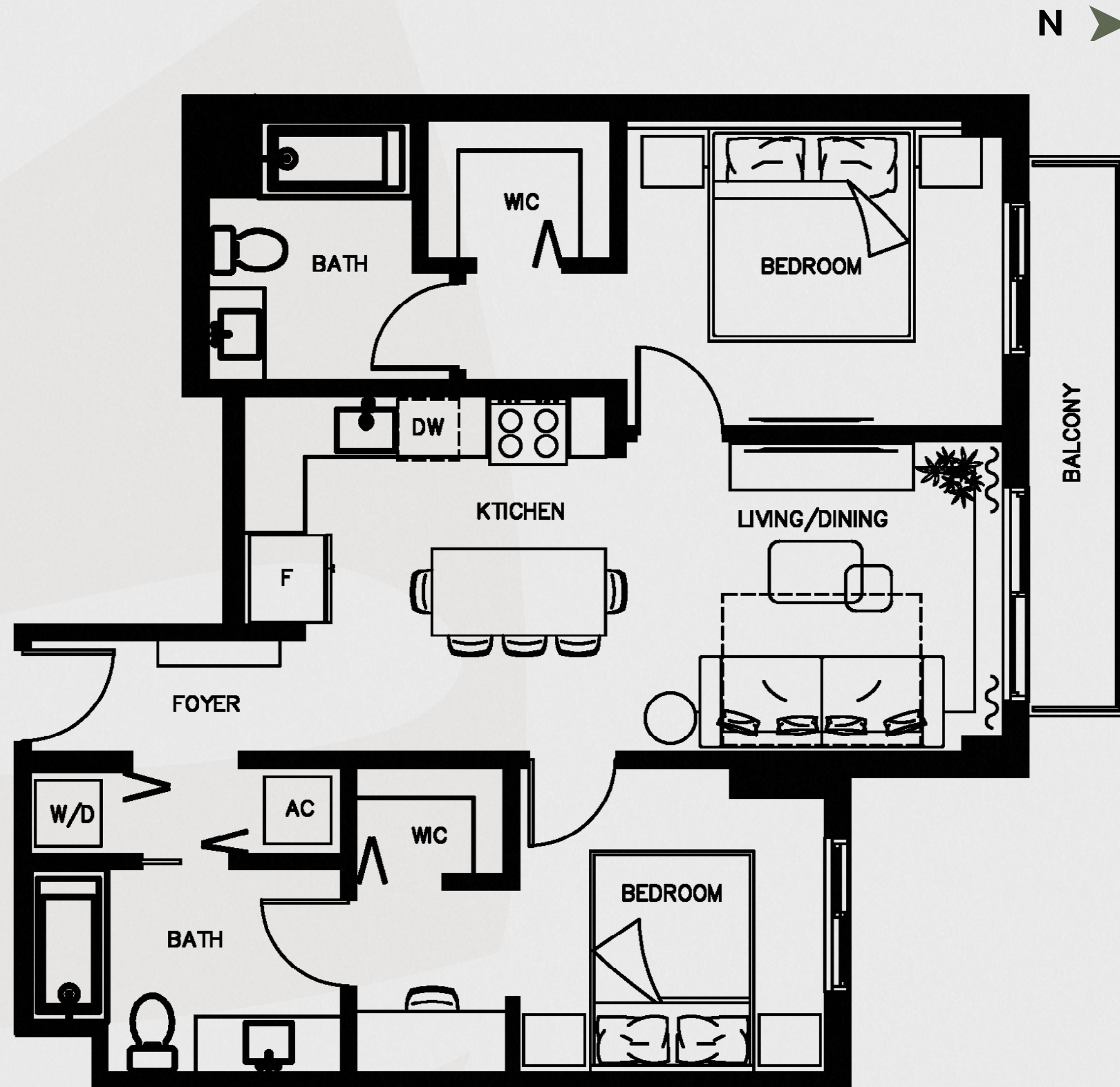
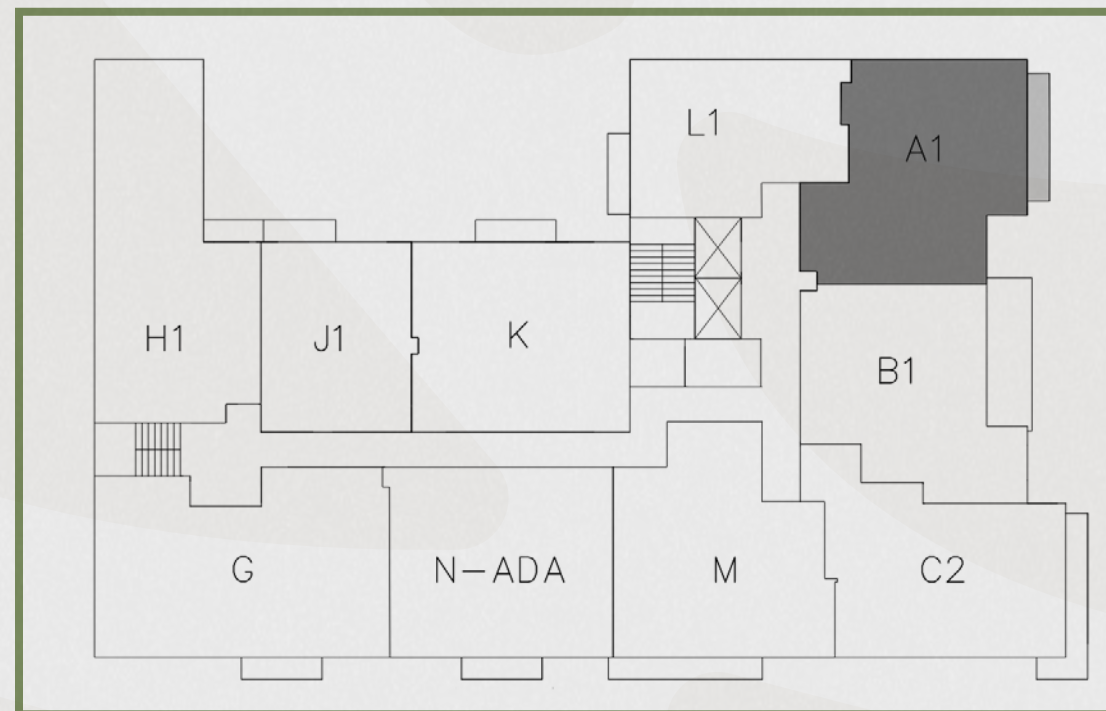
2 BEDROOMS / 2 BATHROOMS

UNIT 501/601/701/801

INTERIOR: 900 SF / 84 m²

BALCONY: 58 SF

TOTAL: 958 SF / 89 m²



BOTANIC

RESIDENCES

The dimensions stated for this unit floor plan are approximate because there are various recognized methods for calculating the square footage of a unit. The square footage stated here is calculated from the exterior boundaries of the exterior walls to the centerline of interior demising walls without deductions for cutouts, curves, or architectural features. This method typically results in quoted dimensions greater than the dimensions that would be determined by using other accepted methods. The definition of "Unit" and the calculation method to be relied upon is set forth by the Developer, in Developer's Prospectus and the method set forth in the Developer's Prospectus may result in a square footage calculation less than the method used here. Consult the Developer's Prospectus for information on what is offered with the Unit and the calculation of the Unit square footage and dimensions.



Residence B

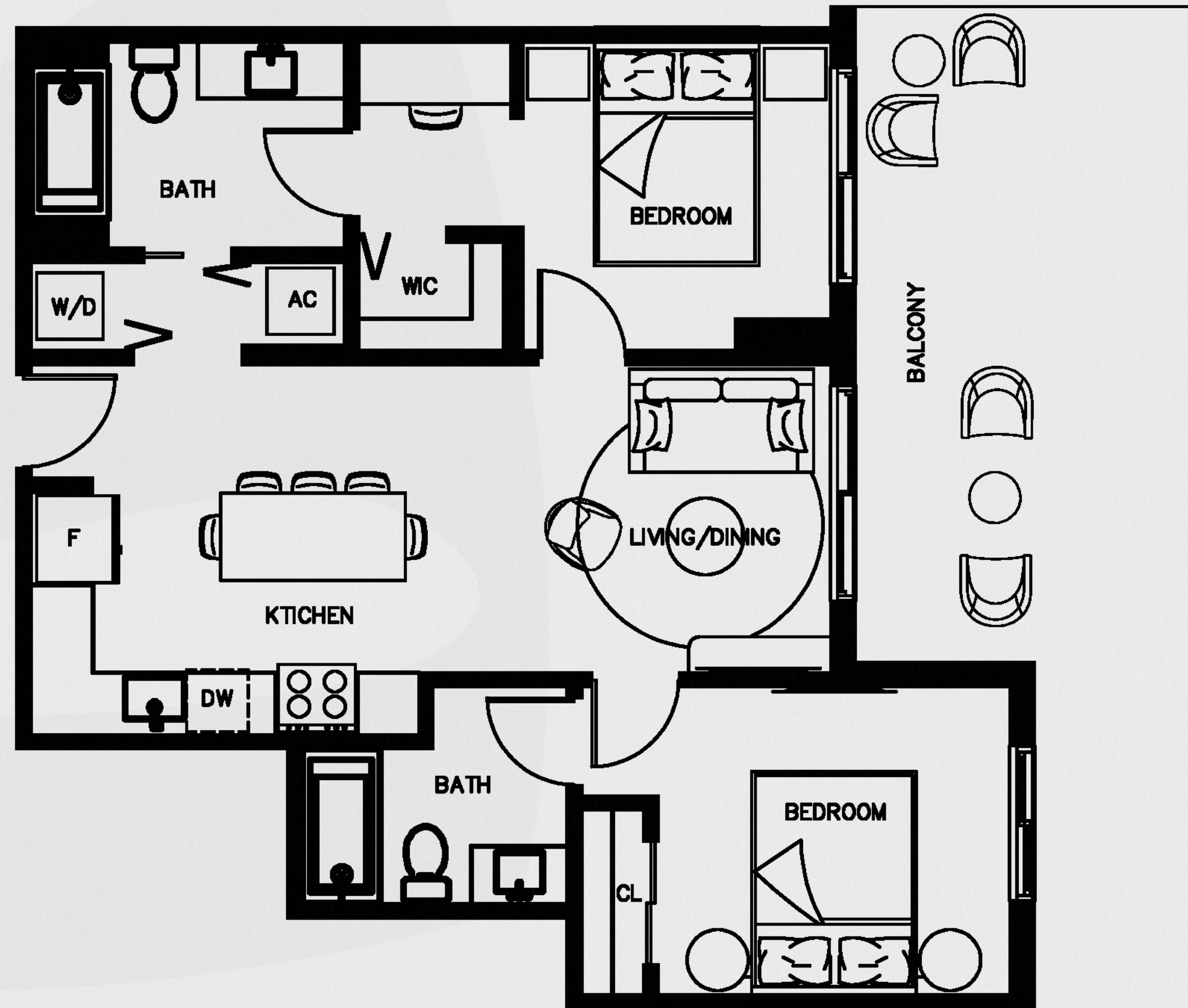
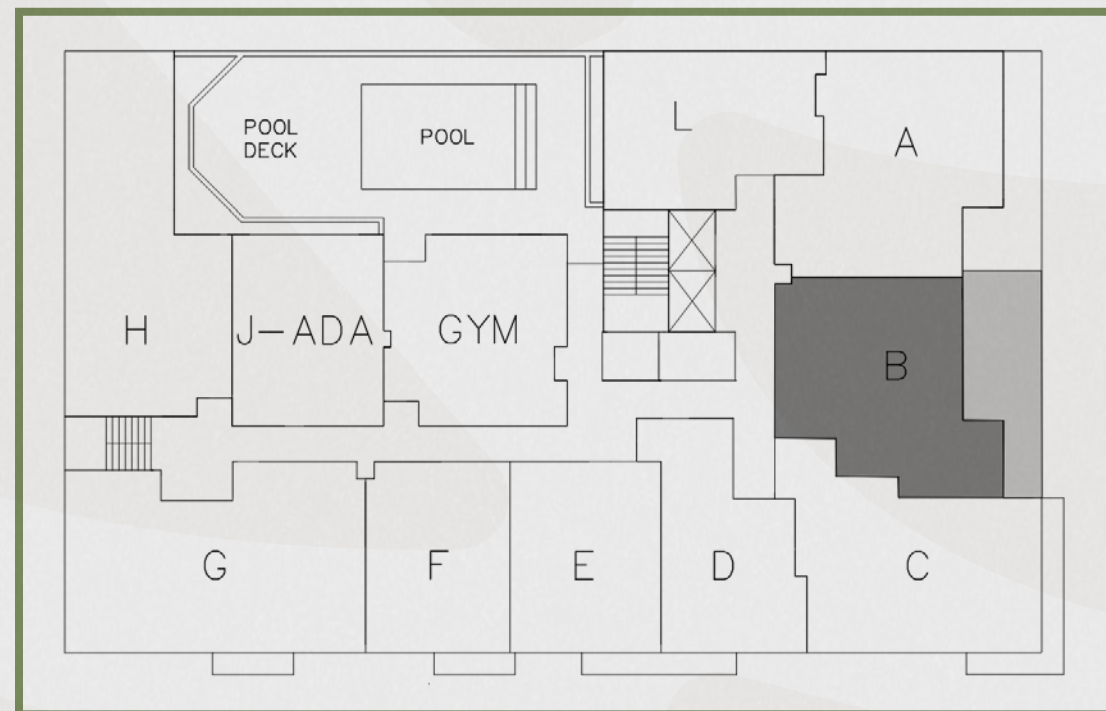
2 BEDROOMS / 2 BATHROOMS

UNIT 402

INTERIOR: 814 SF / 76 m²

BALCONY: 304 SF

TOTAL: 1,118 SF / 104 m²



BOTANIC

R E S I D E N C E S

The dimensions stated for this unit floor plan are approximate because there are various recognized methods for calculating the square footage of a unit. The square footage stated here is calculated from the exterior boundaries of the exterior walls to the centerline of interior demising walls without deductions for cutouts, curves, or architectural features. This method typically results in quoted dimensions greater than the dimensions that would be determined by using other accepted methods. The definition of "Unit" and the calculation method to be relied upon is set forth by the Developer, in Developer's Prospectus and the method set forth in the Developer's Prospectus may result in a square footage calculation less than the method used here. Consult the Developer's Prospectus for information on what is offered with the Unit and the calculation of the Unit square footage and dimensions.



Residence B1-ADA

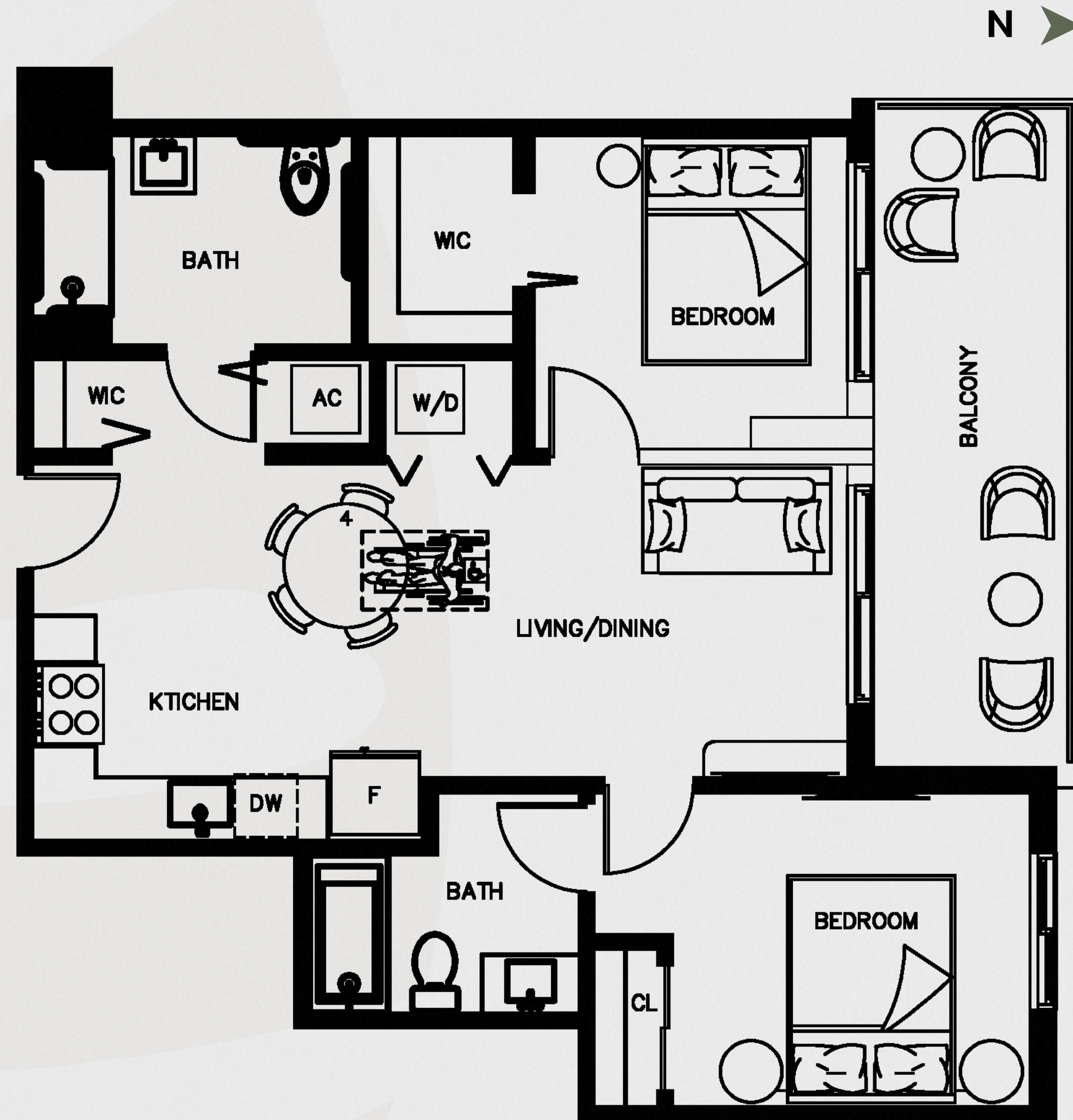
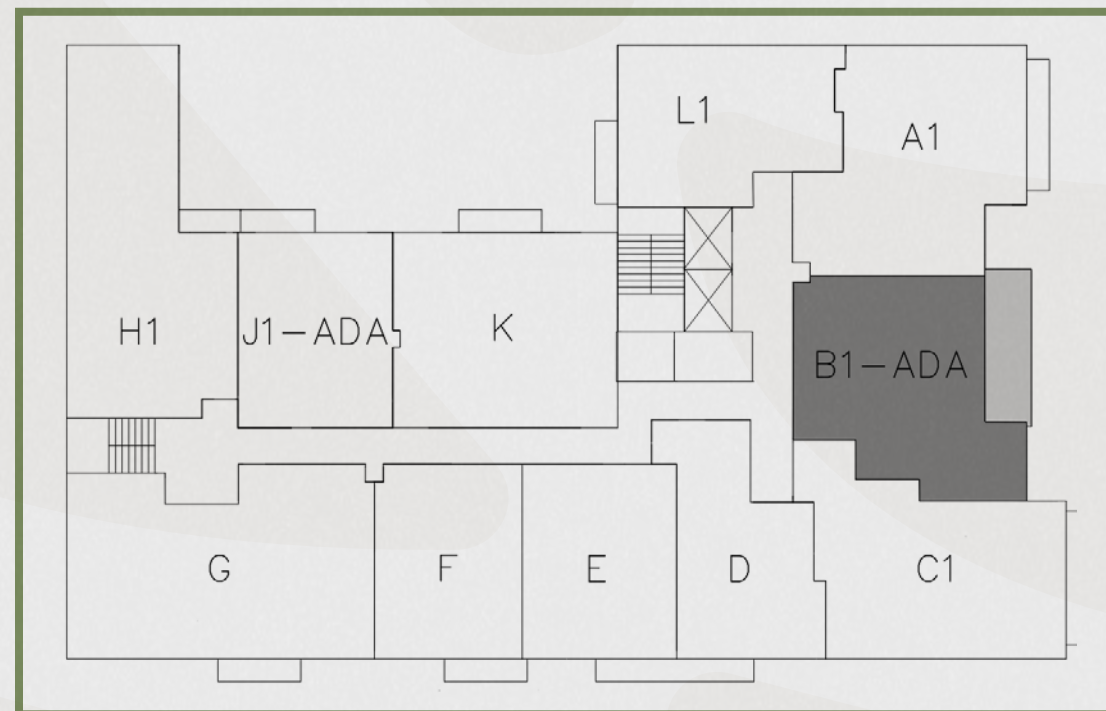
2 BEDROOMS / 2 BATHROOMS

UNIT 502

INTERIOR: 814 SF / 76 m²

BALCONY: 139 SF

TOTAL: 953 SF / 89 m²



BOTANIC

RESIDENCES

The dimensions stated for this unit floor plan are approximate because there are various recognized methods for calculating the square footage of a unit. The square footage stated here is calculated from the exterior boundaries of the exterior walls to the centerline of interior demising walls without deductions for cutouts, curves, or architectural features. This method typically results in quoted dimensions greater than the dimensions that would be determined by using other accepted methods. The definition of "Unit" and the calculation method to be relied upon is set forth by the Developer, in Developer's Prospectus and the method set forth in the Developer's Prospectus may result in a square footage calculation less than the method used here. Consult the Developer's Prospectus for information on what is offered with the Unit and the calculation of the Unit square footage and dimensions.



Residence B1

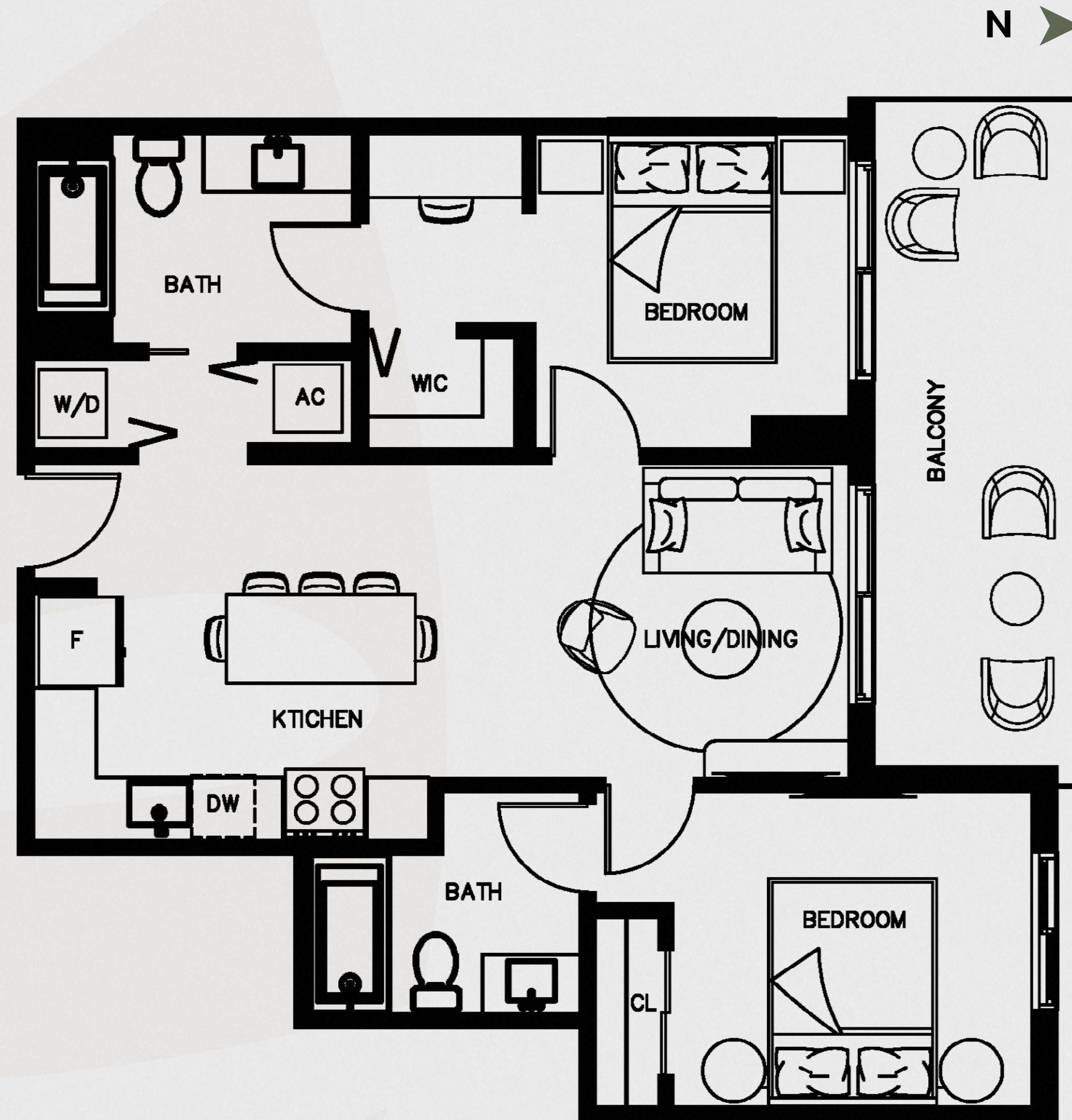
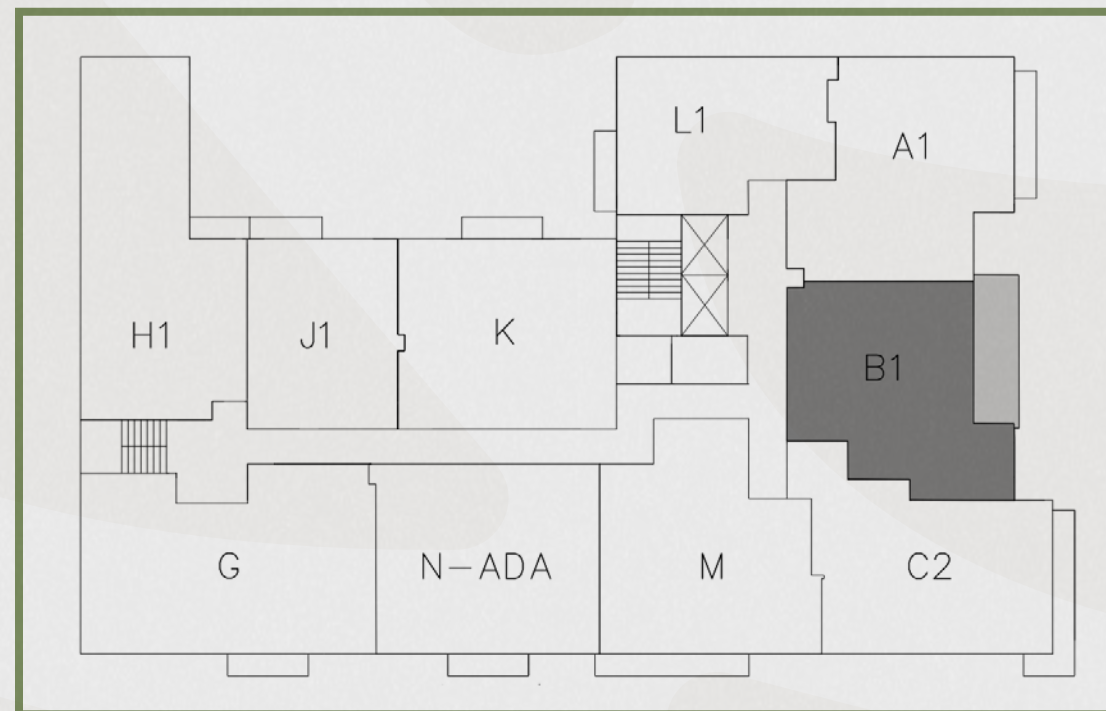
2 BEDROOMS / 2 BATHROOMS

UNIT 602/702/802

INTERIOR: 814 SF / 76 m²

BALCONY: 139 SF

TOTAL: 953 SQ.FT / 89 M²



BOTANIC
RESIDENCES

The dimensions stated for this unit floor plan are approximate because there are various recognized methods for calculating the square footage of a unit. The square footage stated here is calculated from the exterior boundaries of the exterior walls to the centerline of interior demising walls without deductions for cutouts, curves, or architectural features. This method typically results in quoted dimensions greater than the dimensions that would be determined by using other accepted methods. The definition of "Unit" and the calculation method to be relied upon is set forth by the Developer, in Developer's Prospectus and the method set forth in the Developer's Prospectus may result in a square footage calculation less than the method used here. Consult the Developer's Prospectus for information on what is offered with the Unit and the calculation of the Unit square footage and dimensions.



Residence C

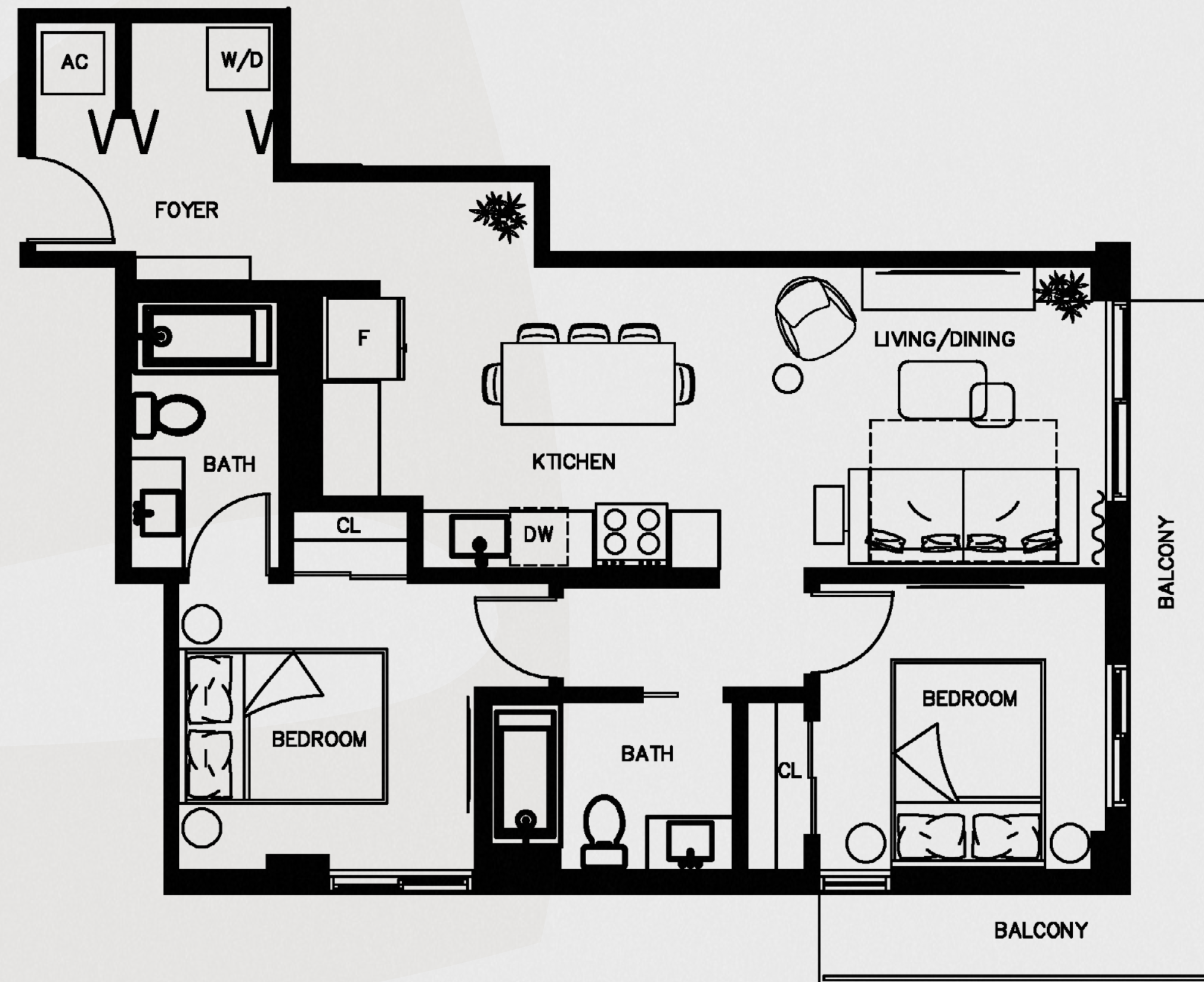
2 BEDROOMS / 2 BATHROOMS

UNIT 403

INTERIOR: 862 SF / 80 m²

BALCONY: 110 SF

TOTAL: 972 SF / 104 m²



BOTANIC

R E S I D E N C E S

The dimensions stated for this unit floor plan are approximate because there are various recognized methods for calculating the square footage of a unit. The square footage stated here is calculated from the exterior boundaries of the exterior walls to the centerline of interior demising walls without deductions for cutouts, curves, or architectural features. This method typically results in quoted dimensions greater than the dimensions that would be determined by using other accepted methods. The definition of "Unit" and the calculation method to be relied upon is set forth by the Developer, in Developer's Prospectus and the method set forth in the Developer's Prospectus may result in a square footage calculation less than the method used here. Consult the Developer's Prospectus for information on what is offered with the Unit and the calculation of the Unit square footage and dimensions.



Residence C1

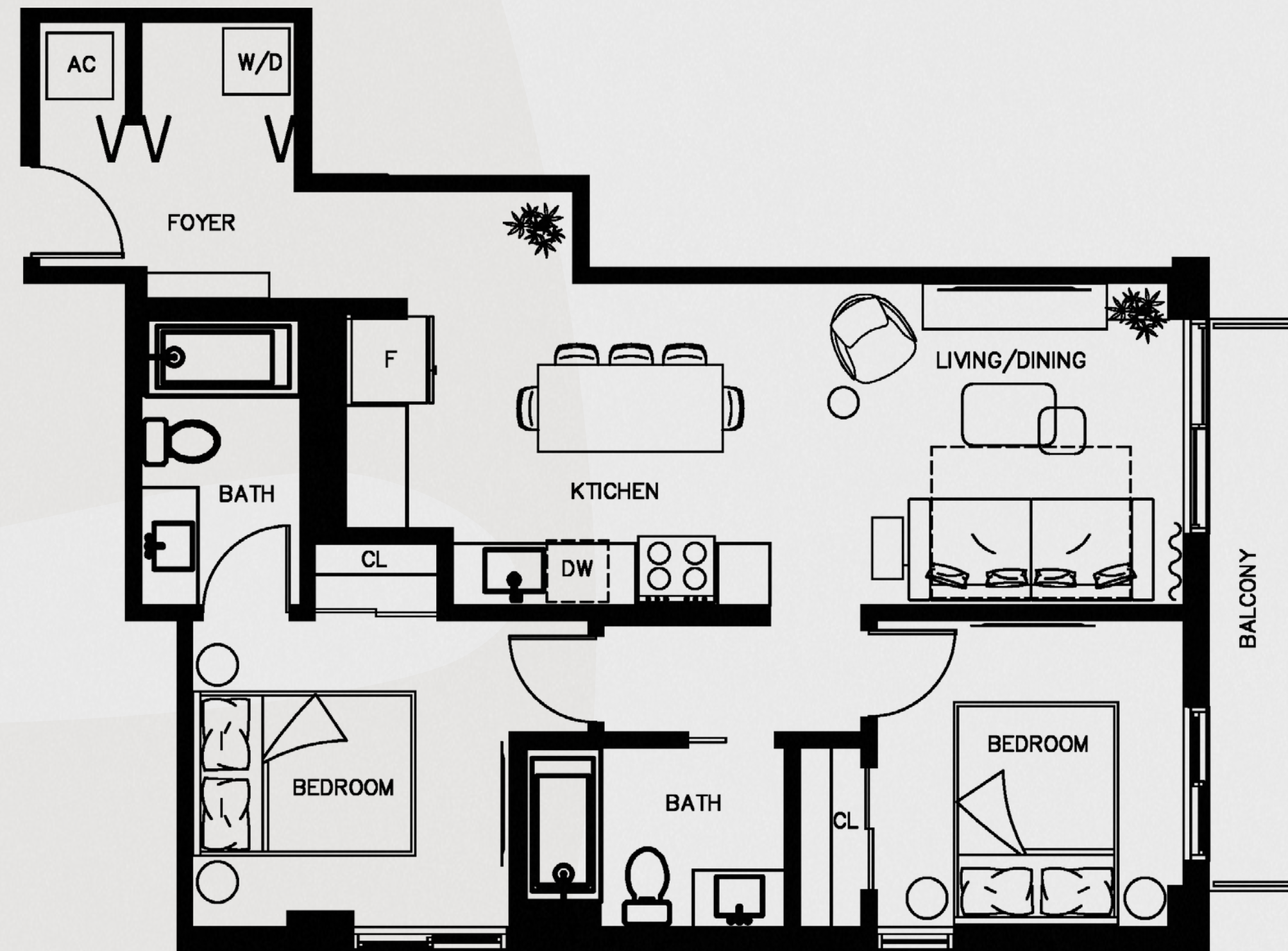
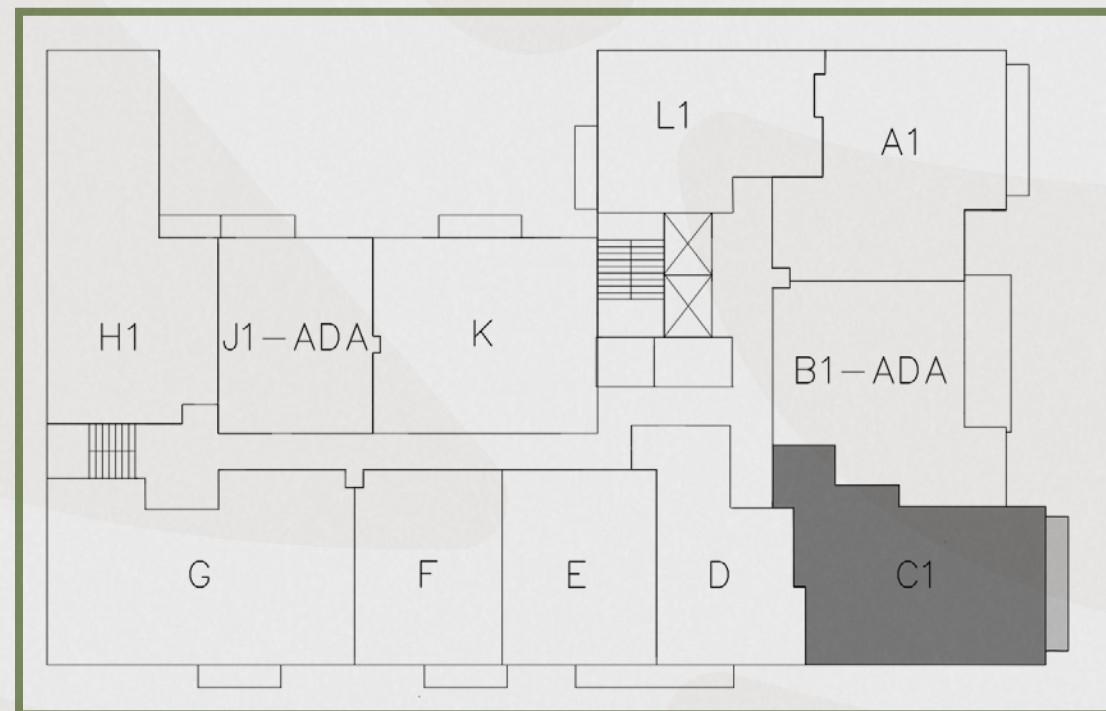
2 BEDROOMS / 2 BATHROOMS

UNIT 503/703

INTERIOR: 862 SF / 80 m²

BALCONY: 59 SF

TOTAL: 921 SF / 86 m²



BOTANIC

R E S I D E N C E S

The dimensions stated for this unit floor plan are approximate because there are various recognized methods for calculating the square footage of a unit. The square footage stated here is calculated from the exterior boundaries of the exterior walls to the centerline of interior demising walls without deductions for cutouts, curves, or architectural features. This method typically results in quoted dimensions greater than the dimensions that would be determined by using other accepted methods. The definition of "Unit" and the calculation method to be relied upon is set forth by the Developer, in Developer's Prospectus and the method set forth in the Developer's Prospectus may result in a square footage calculation less than the method used here. Consult the Developer's Prospectus for information on what is offered with the Unit and the calculation of the Unit square footage and dimensions.



Residence C2

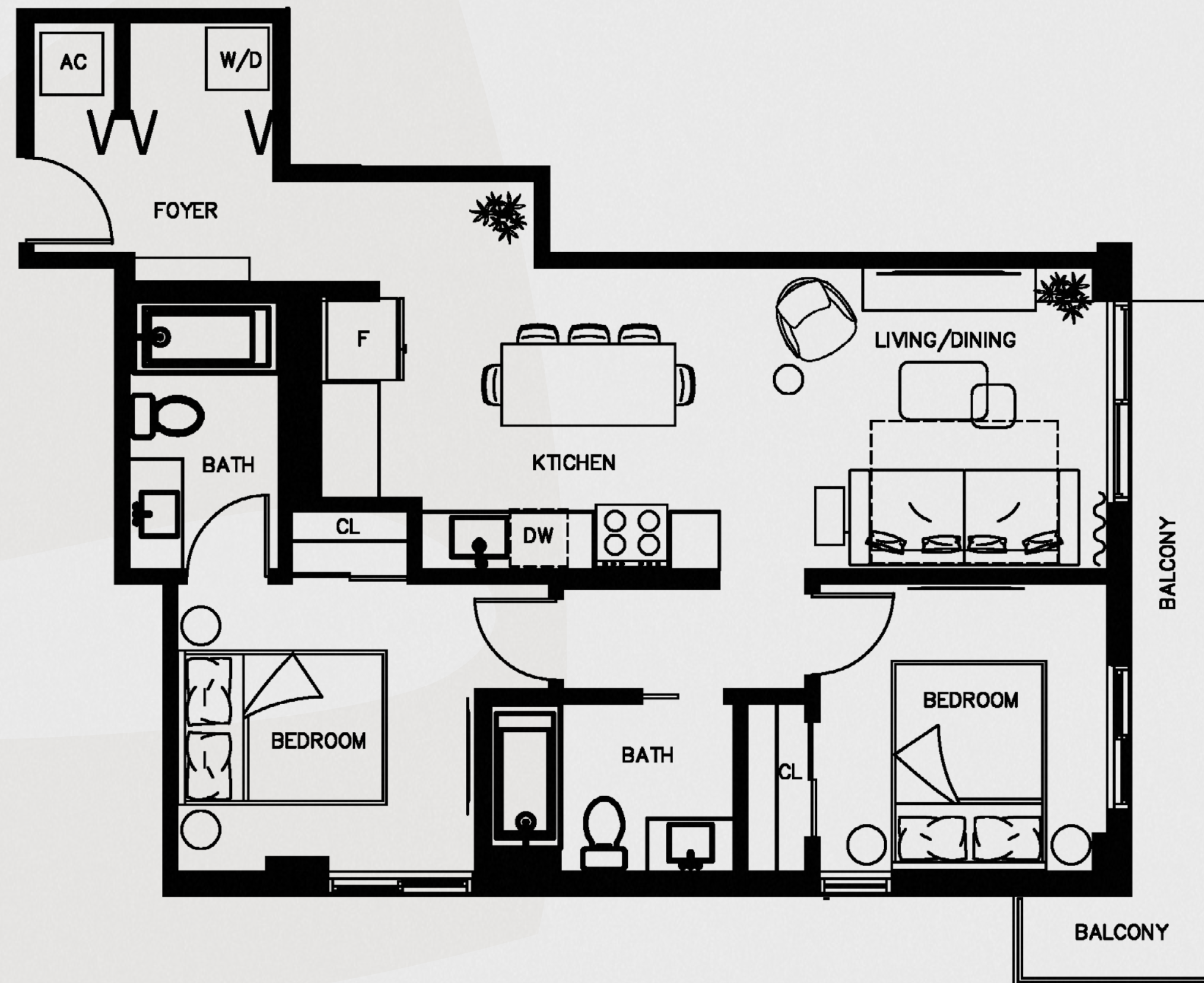
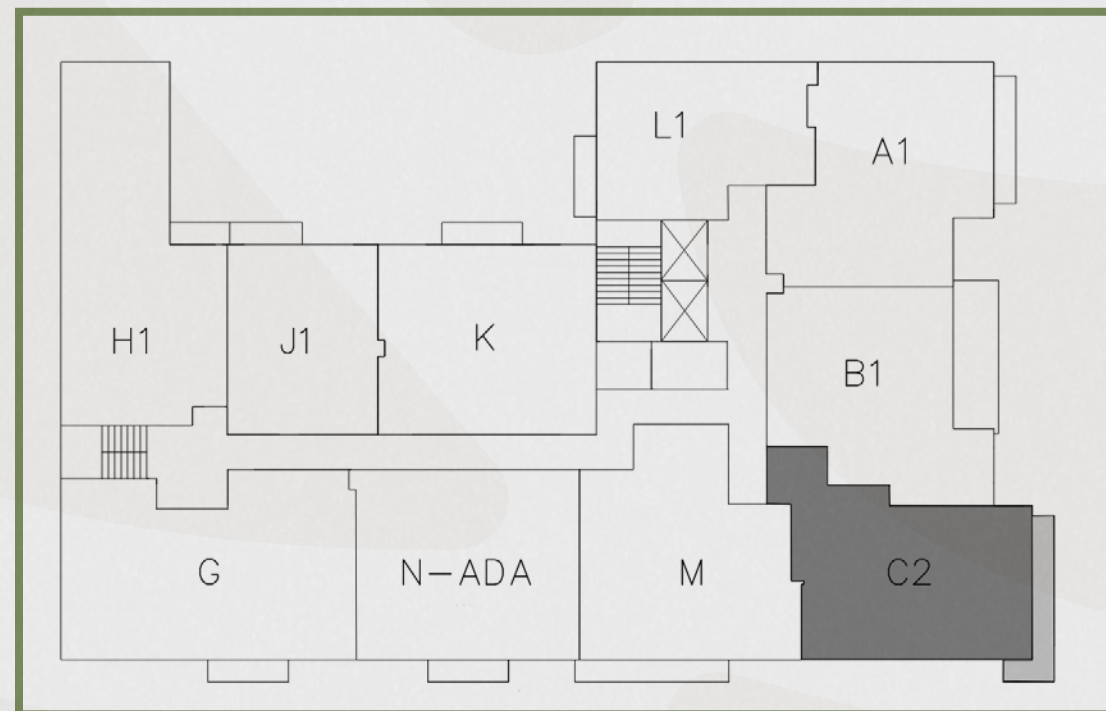
2 BEDROOMS / 2 BATHROOMS

UNIT 603/803

INTERIOR: 862 SF / 80 m²

BALCONY: 88 SF

TOTAL: 950 SF / 89 m²



BOTANIC

R E S I D E N C E S

The dimensions stated for this unit floor plan are approximate because there are various recognized methods for calculating the square footage of a unit. The square footage stated here is calculated from the exterior boundaries of the exterior walls to the centerline of interior demising walls without deductions for cutouts, curves, or architectural features. This method typically results in quoted dimensions greater than the dimensions that would be determined by using other accepted methods. The definition of "Unit" and the calculation method to be relied upon is set forth by the Developer, in Developer's Prospectus and the method set forth in the Developer's Prospectus may result in a square footage calculation less than the method used here. Consult the Developer's Prospectus for information on what is offered with the Unit and the calculation of the Unit square footage and dimensions.



Residence M

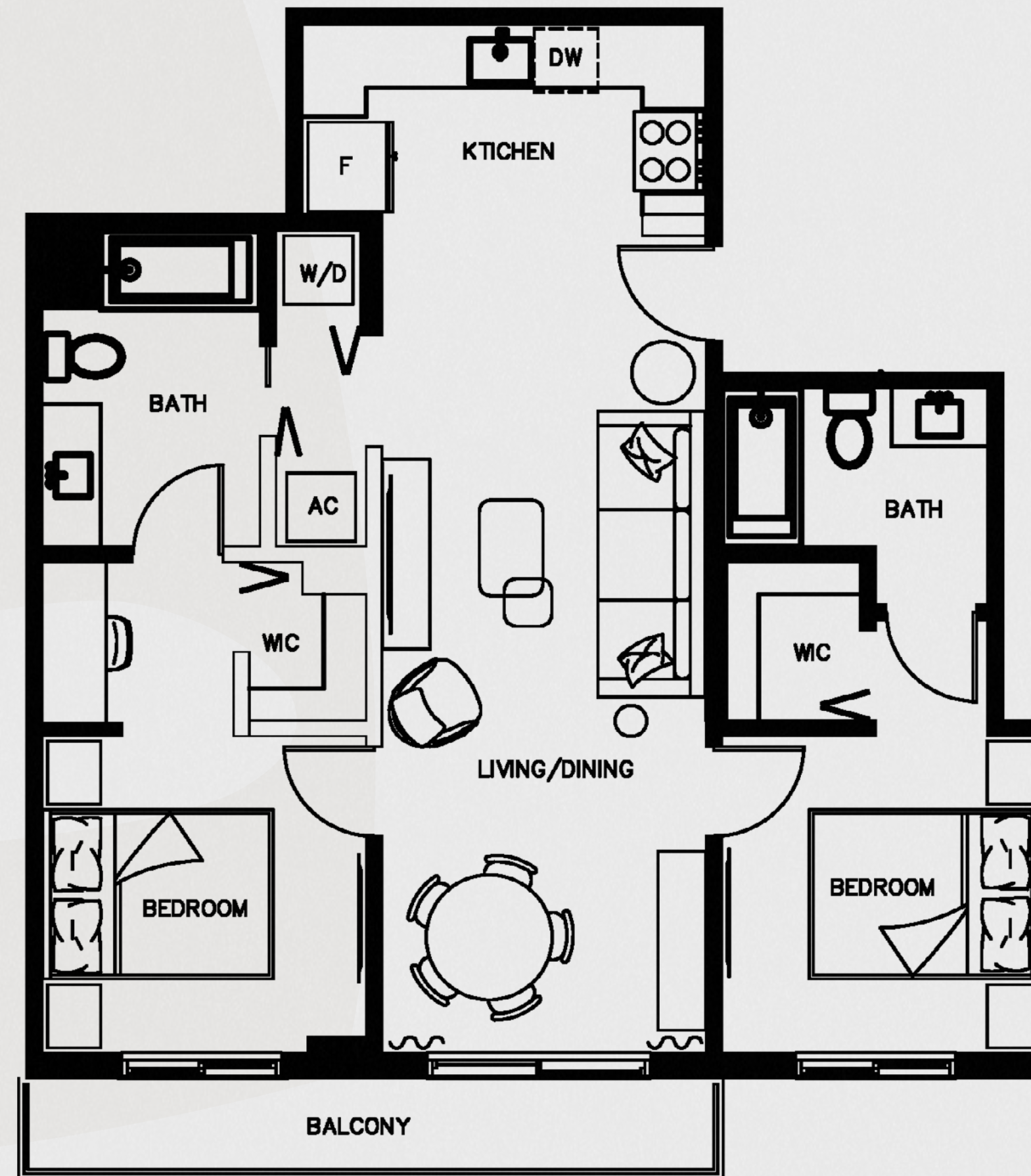
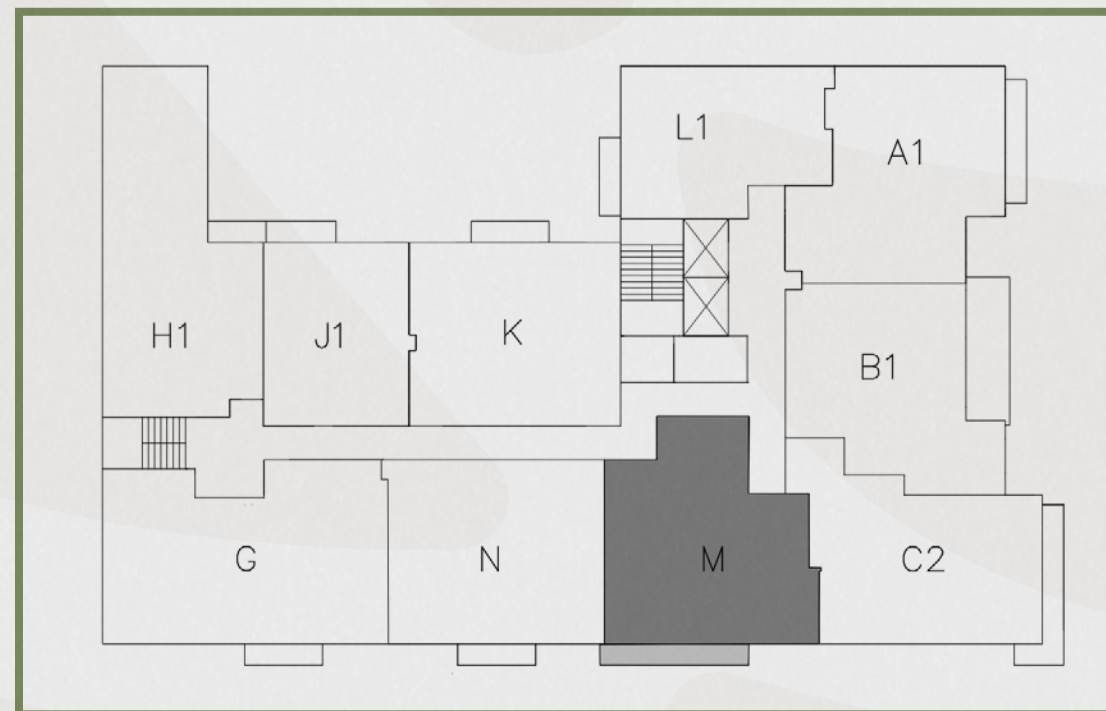
2 BEDROOMS / 2 BATHROOMS

UNIT 604/704/804

INTERIOR: 883 SF / 82 m²

BALCONY: 70 SF

TOTAL: 953 SF / 89 m²



BOTANIC

R E S I D E N C E S

The dimensions stated for this unit floor plan are approximate because there are various recognized methods for calculating the square footage of a unit. The square footage stated here is calculated from the exterior boundaries of the exterior walls to the centerline of interior demising walls without deductions for cutouts, curves, or architectural features. This method typically results in quoted dimensions greater than the dimensions that would be determined by using other accepted methods. The definition of "Unit" and the calculation method to be relied upon is set forth by the Developer, in Developer's Prospectus and the method set forth in the Developer's Prospectus may result in a square footage calculation less than the method used here. Consult the Developer's Prospectus for information on what is offered with the Unit and the calculation of the Unit square footage and dimensions.



Residence N-ADA

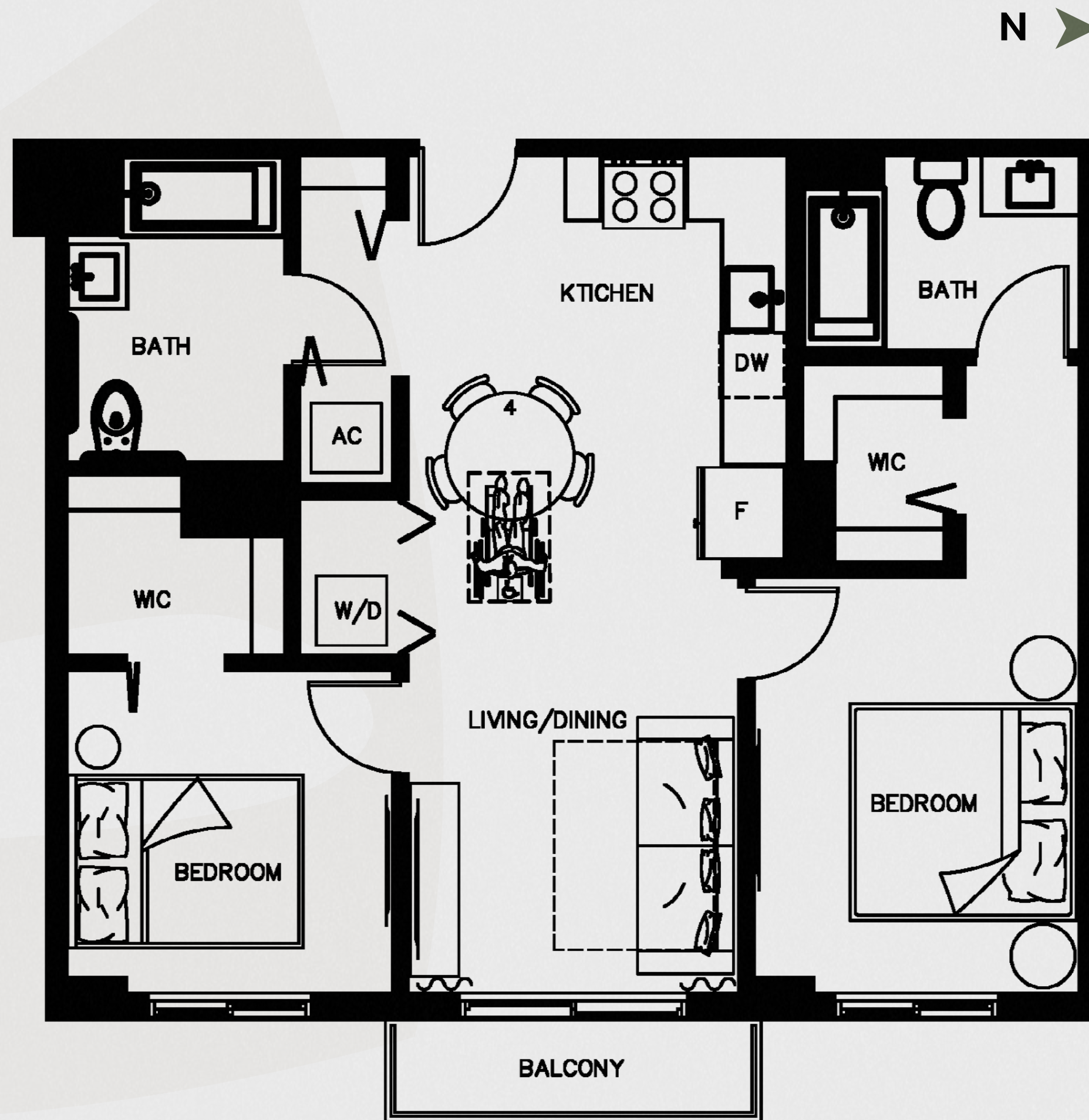
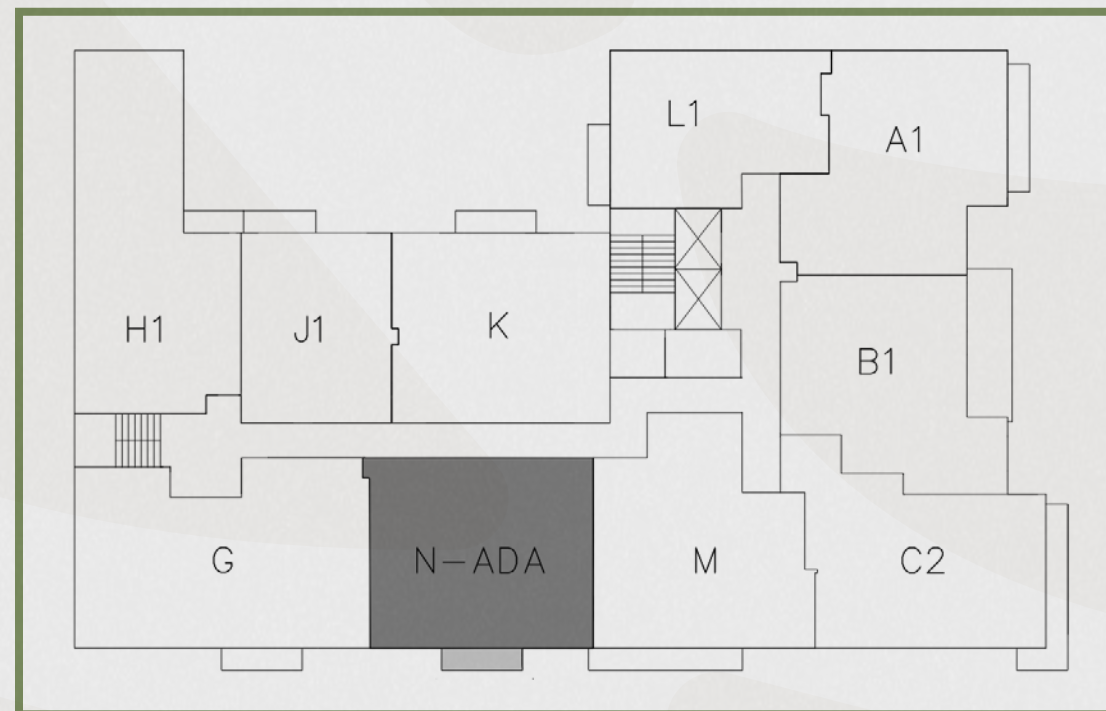
2 BEDROOMS / 2 BATHROOMS

UNIT 605

INTERIOR: 858 SF / 80 m²

BALCONY: 37 SF

TOTAL: 895 SF / 83.1 m²



BOTANIC
RESIDENCES

The dimensions stated for this unit floor plan are approximate because there are various recognized methods for calculating the square footage of a unit. The square footage stated here is calculated from the exterior boundaries of the exterior walls to the centerline of interior demising walls without deductions for cutouts, curves, or architectural features. This method typically results in quoted dimensions greater than the dimensions that would be determined by using other accepted methods. The definition of "Unit" and the calculation method to be relied upon is set forth by the Developer, in Developer's Prospectus and the method set forth in the Developer's Prospectus may result in a square footage calculation less than the method used here. Consult the Developer's Prospectus for information on what is offered with the Unit and the calculation of the Unit square footage and dimensions.



Residence N

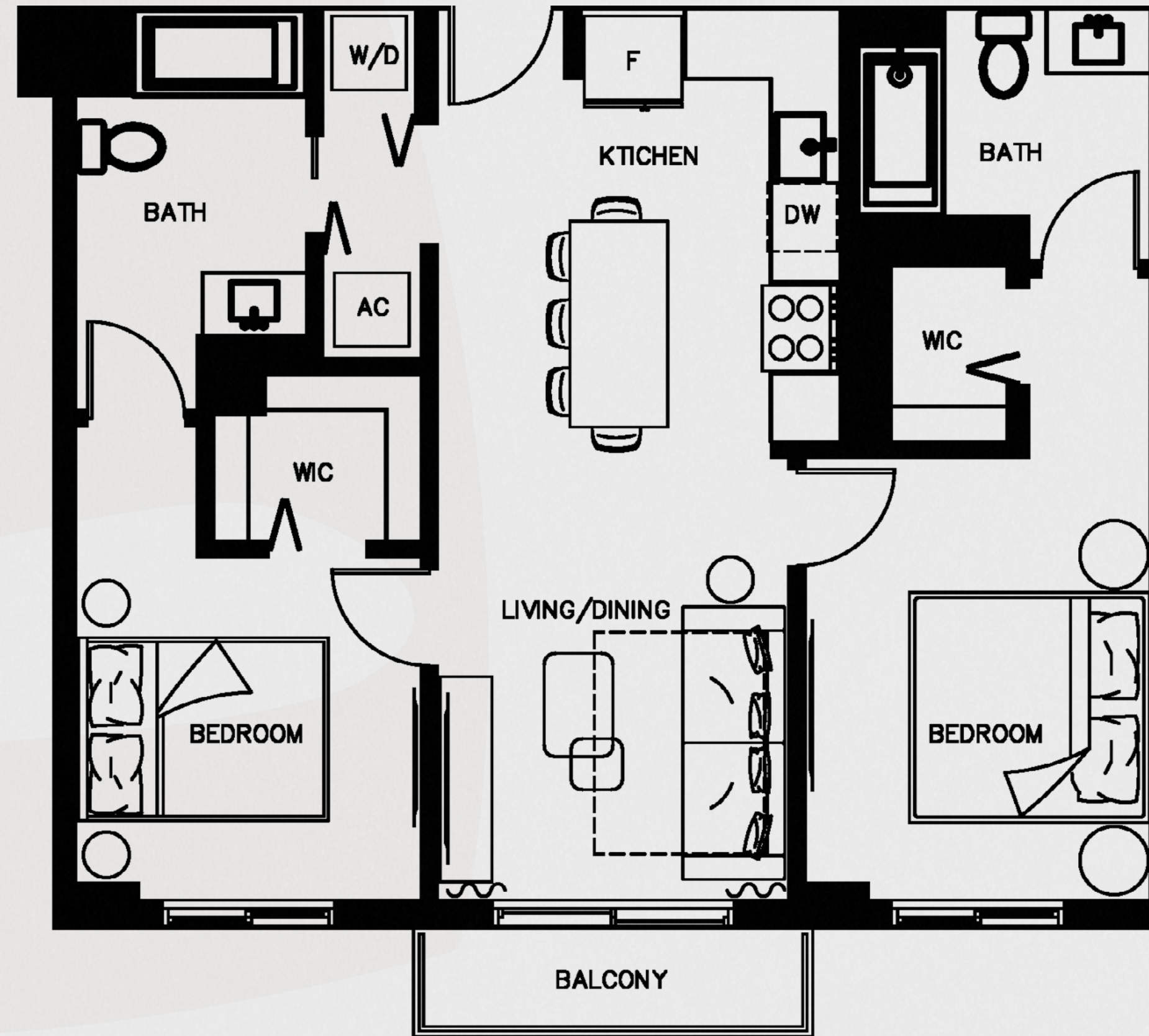
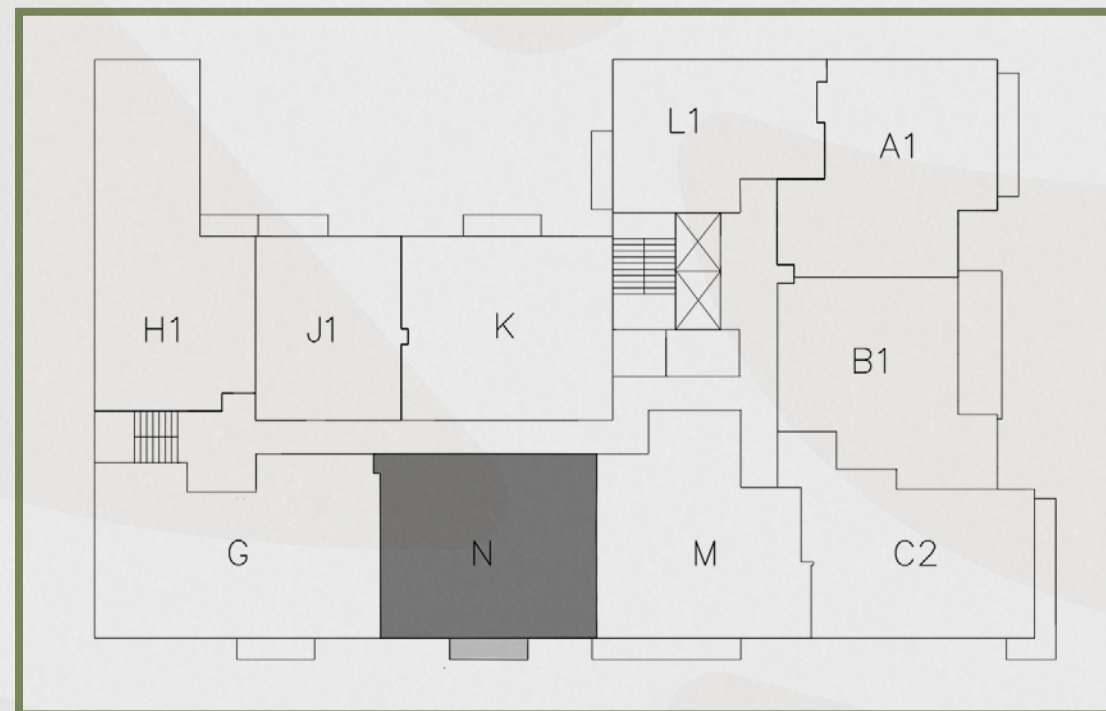
2 BEDROOMS / 2 BATHROOMS

UNIT 705/805

INTERIOR: 858 SF / 54 m²

BALCONY: 37 SF

TOTAL: 895 SF / 83 m²



BOTANIC
RESIDENCES

The dimensions stated for this unit floor plan are approximate because there are various recognized methods for calculating the square footage of a unit. The square footage stated here is calculated from the exterior boundaries of the exterior walls to the centerline of interior demising walls without deductions for cutouts, curves, or architectural features. This method typically results in quoted dimensions greater than the dimensions that would be determined by using other accepted methods. The definition of "Unit" and the calculation method to be relied upon is set forth by the Developer, in Developer's Prospectus and the method set forth in the Developer's Prospectus may result in a square footage calculation less than the method used here. Consult the Developer's Prospectus for information on what is offered with the Unit and the calculation of the Unit square footage and dimensions.