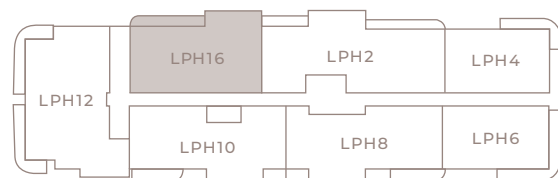


**MODEL LPH16 - TYPE PH**  
 (2BED/2.5BTH)  
 LEVELS 25 - 26

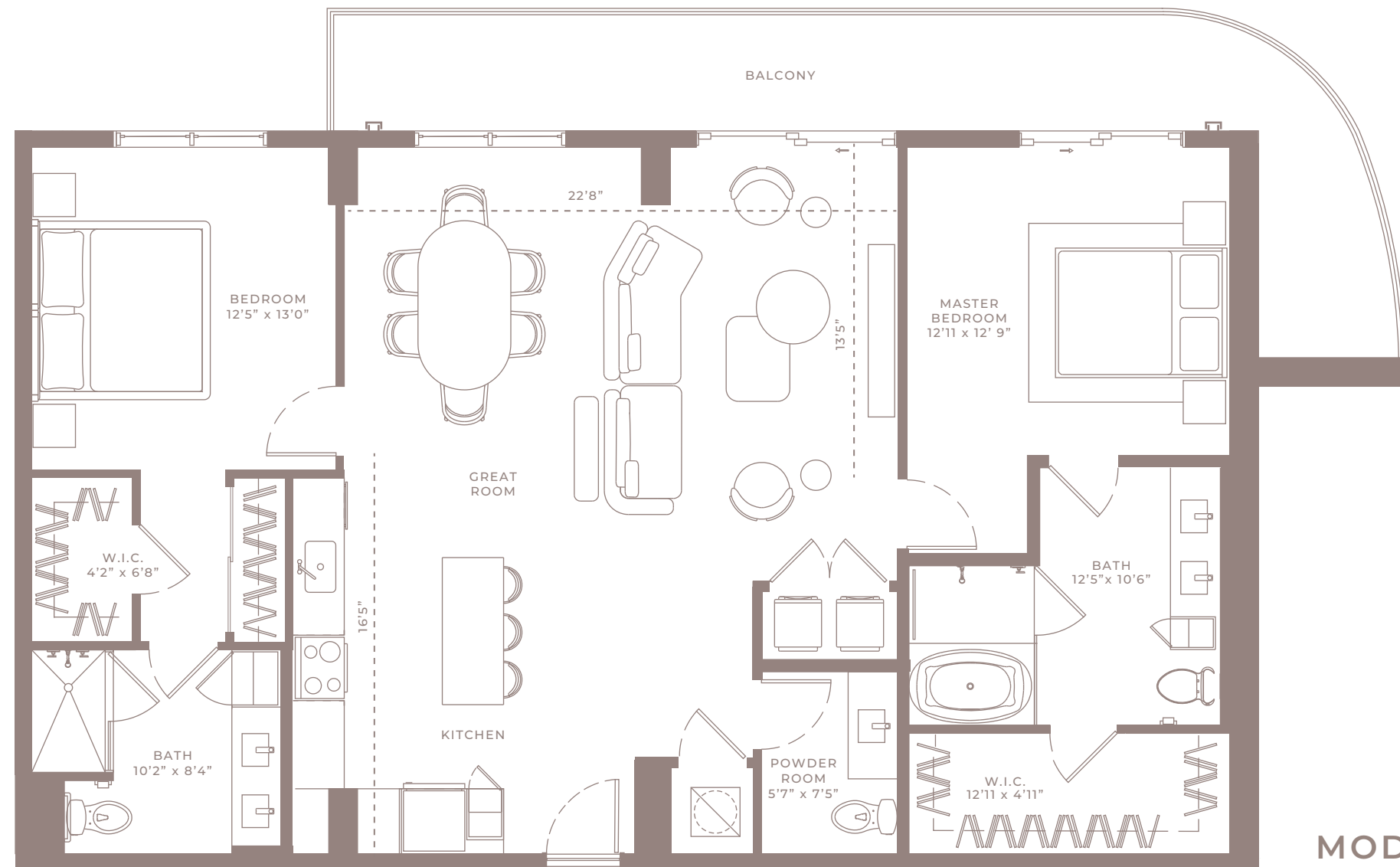


Internal Area	2,156 SQ.FT (200 m <sup>2</sup> )
External Area	173 SQ.FT (16m <sup>2</sup> )
<b>Total Area</b>	<b>2329 SQ.FT (216m<sup>2</sup>)</b>

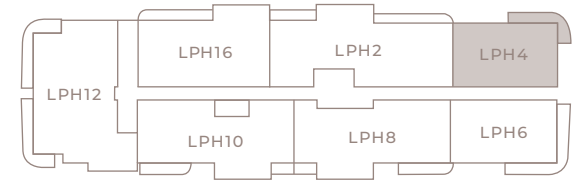


Any renderings and depictions are conceptual only and are for the convenience of reference. They should not be relied upon as representations, express or implied, of the final detail of the Units nor the views from any of the Units. ORAL REPRESENTATIONS CANNOT BE RELIED UPON AS CORRECTLY STATING REPRESENTATIONS OF THE DEVELOPER. FOR CORRECT REPRESENTATIONS, MAKE REFERENCE TO THIS BROCHURE AND TO THE DOCUMENTS REQUIRED BY 718.503, FLORIDA STATUTES, TO BE FURNISHED BY A DEVELOPER TO A BUYER OR LESSEE.





**MODEL LPH4 - TYPE PH**  
 (2BED/2.5BTH)  
 LEVELS 25 - 26

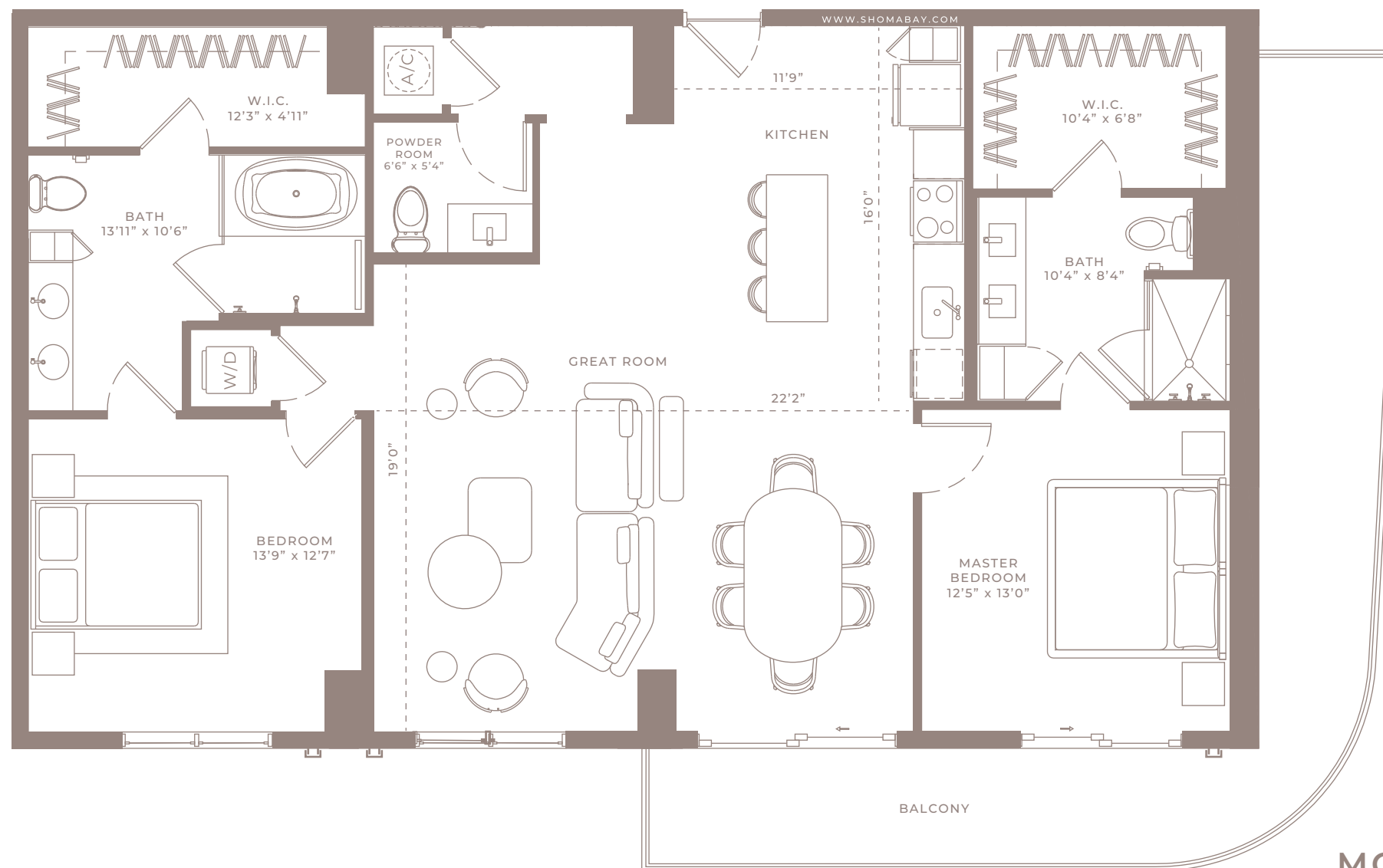


Internal Area	1,493 SQ.FT (139m <sup>2</sup> )
External Area	248 SQ.FT (23m <sup>2</sup> )
<b>Total Area</b>	<b>1,741 SQ.FT (162m<sup>2</sup>)</b>

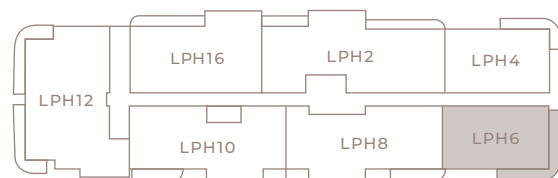


Any renderings and depictions are conceptual only and are for the convenience of reference. They should not be relied upon as representations, express or implied, of the final detail of the Units nor the views from any of the Units. ORAL REPRESENTATIONS CANNOT BE RELIED UPON AS CORRECTLY STATING REPRESENTATIONS OF THE DEVELOPER. FOR CORRECT REPRESENTATIONS, MAKE REFERENCE TO THIS BROCHURE AND TO THE DOCUMENTS REQUIRED BY 718.503, FLORIDA STATUTES, TO BE FURNISHED BY A DEVELOPER TO A BUYER OR LESSEE.





**MODEL LPH6 - TYPE PH**  
 (2BED/2.5BTH)  
 LEVELS 25 - 26



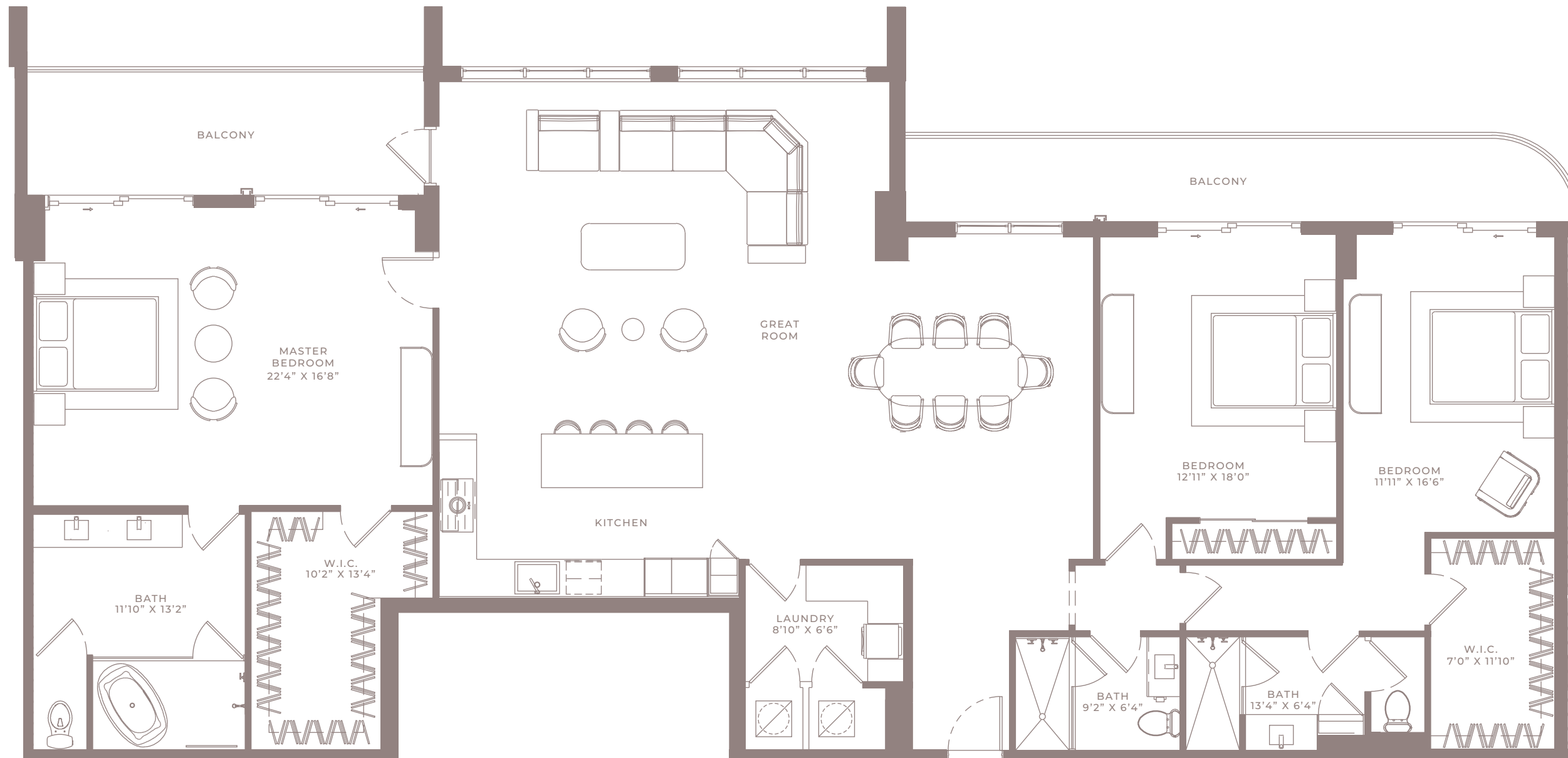
Internal Area	1,518 SQ.FT (141 m <sup>2</sup> )
External Area	348 SQ.FT (32 m <sup>2</sup> )
<b>Total Area</b>	<b>1866 SQ.FT (173 m<sup>2</sup>)</b>



Any renderings and depictions are conceptual only and are for the convenience of reference. They should not be relied upon as representations, express or implied, of the final detail of the Units nor the views from any of the Units. ORAL REPRESENTATIONS CANNOT BE RELIED UPON AS CORRECTLY STATING REPRESENTATIONS OF THE DEVELOPER. FOR CORRECT REPRESENTATIONS, MAKE REFERENCE TO THIS BROCHURE AND TO THE DOCUMENTS REQUIRED BY 718.503, FLORIDA STATUTES, TO BE FURNISHED BY A DEVELOPER TO A BUYER OR LESSEE.



**SHOMA**



**MODEL LPH2 - TYPE PH**  
 (3BED/3BTH)  
 LEVELS 25 - 26

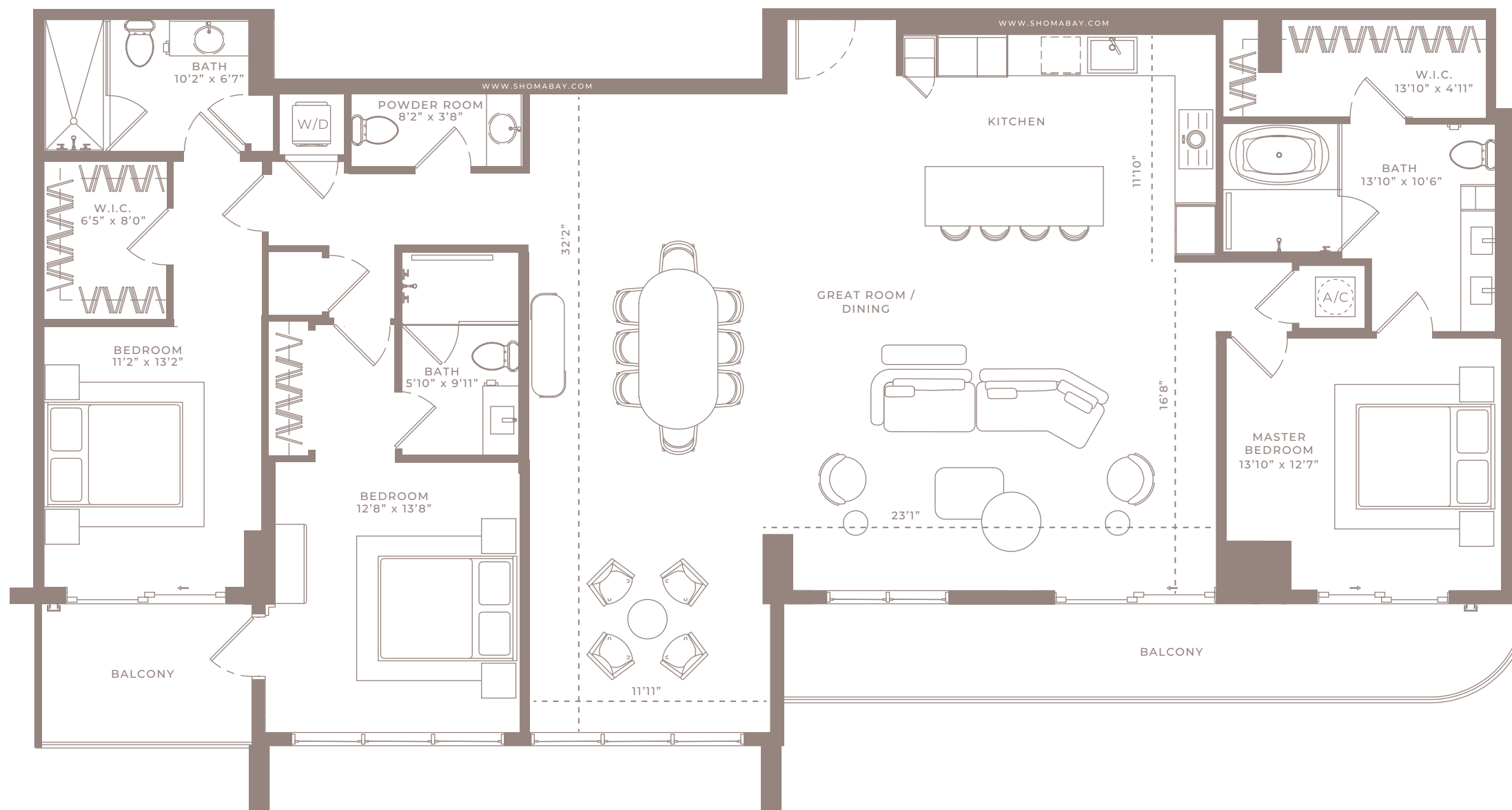


Internal Area	2,659 SQ.FT (247m <sup>2</sup> )
External Area	342 SQ.FT (32m <sup>2</sup> )
<b>Total Area</b>	<b>3001 SQ.FT (279m<sup>2</sup>)</b>



Any renderings and depictions are conceptual only and are for the convenience of reference. They should not be relied upon as representations, express or implied, of the final detail of the Units nor the views from any of the Units. ORAL REPRESENTATIONS CANNOT BE RELIED UPON AS CORRECTLY STATING REPRESENTATIONS OF THE DEVELOPER. FOR CORRECT REPRESENTATIONS, MAKE REFERENCE TO THIS BROCHURE AND TO THE DOCUMENTS REQUIRED BY 718.503, FLORIDA STATUTES, TO BE FURNISHED BY A DEVELOPER TO A BUYER OR LESSEE.





**MODEL LPH8 - TYPE PH**  
 (3BED/3.5BTH)  
 LEVELS 25 - 26

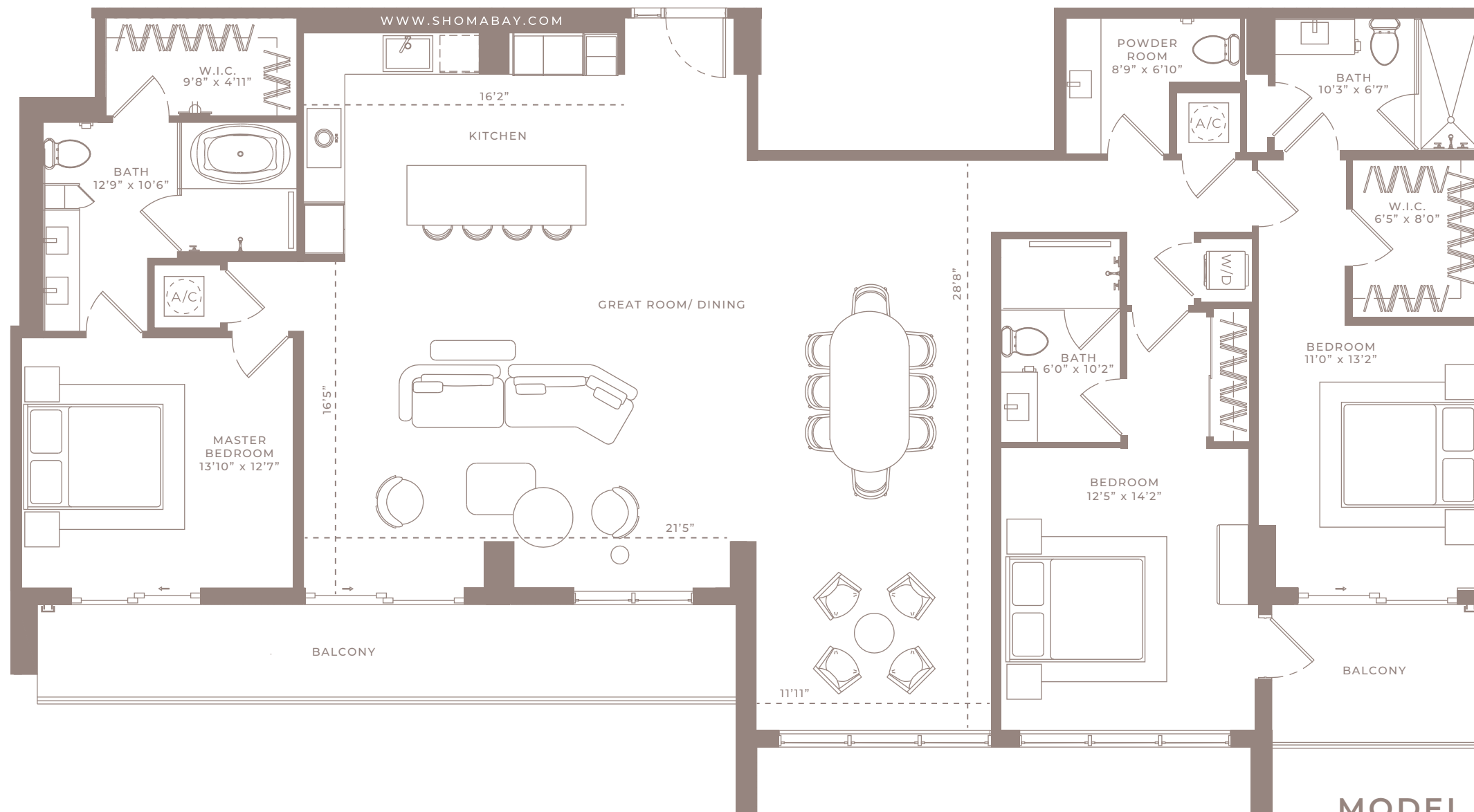


Internal Area	2,299 SQ.FT (214 m <sup>2</sup> )
External Area	260 SQ.FT (24 m <sup>2</sup> )
Total Area	2559 SQ.FT (238 m <sup>2</sup> )



Any renderings and depictions are conceptual only and are for the convenience of reference. They should not be relied upon as representations, express or implied, of the final detail of the Units nor the views from any of the Units. ORAL REPRESENTATIONS CANNOT BE RELIED UPON AS CORRECTLY STATING REPRESENTATIONS OF THE DEVELOPER. FOR CORRECT REPRESENTATIONS, MAKE REFERENCE TO THIS BROCHURE AND TO THE DOCUMENTS REQUIRED BY 718.503, FLORIDA STATUTES, TO BE FURNISHED BY A DEVELOPER TO A BUYER OR LESSEE.





**MODEL LPH10 - TYPE PH**  
 (3BED/3.5BTH)  
 LEVELS 25 - 26



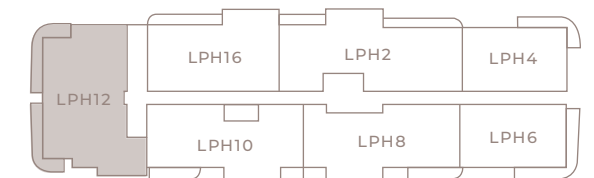
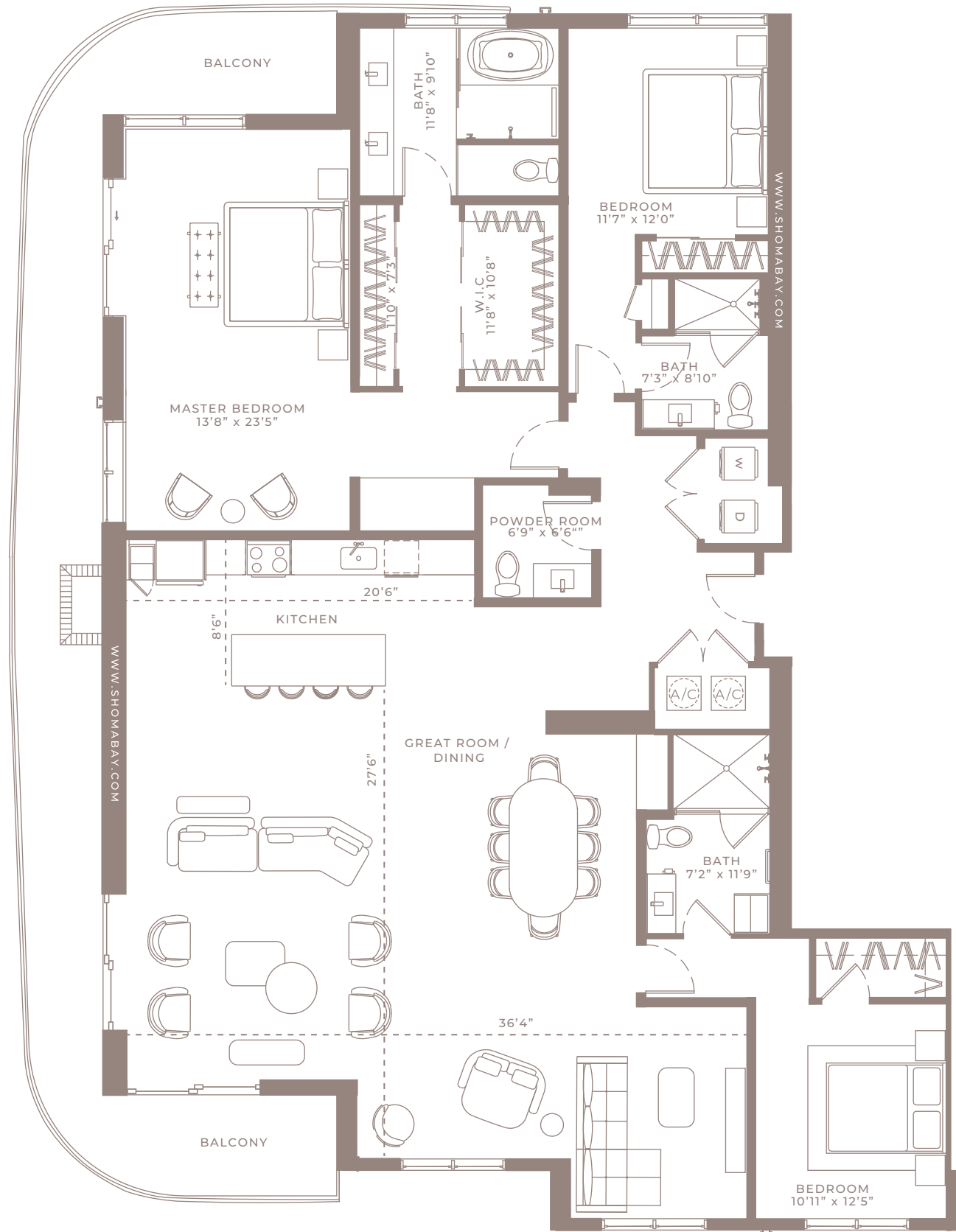
Internal Area	2,269 SQ.FT (211 m <sup>2</sup> )
External Area	253 SQ.FT (24 m <sup>2</sup> )
<b>Total Area</b>	<b>2522 SQ.FT (234 m<sup>2</sup>)</b>



Any renderings and depictions are conceptual only and are for the convenience of reference. They should not be relied upon as representations, express or implied, of the final detail of the Units nor the views from any of the Units. ORAL REPRESENTATIONS CANNOT BE RELIED UPON AS CORRECTLY STATING REPRESENTATIONS OF THE DEVELOPER. FOR CORRECT REPRESENTATIONS, MAKE REFERENCE TO THIS BROCHURE AND TO THE DOCUMENTS REQUIRED BY 718.503, FLORIDA STATUTES, TO BE FURNISHED BY A DEVELOPER TO A BUYER OR LESSEE.



**SHOMA**



**MODEL LPH12 - TYPE PH**  
 (3BED/3.5BTH)  
 LEVELS 25 - 26

Internal Area	2,751 SQ.FT (256 m <sup>2</sup> )
External Area	478 SQ.FT (44 m <sup>2</sup> )
<b>Total Area</b>	<b>3229 SQ.FT (300 m<sup>2</sup>)</b>



Any renderings and depictions are conceptual only and are for the convenience of reference. They should not be relied upon as representations, express or implied, of the final detail of the Units nor the views from any of the Units. ORAL REPRESENTATIONS CANNOT BE RELIED UPON AS CORRECTLY STATING REPRESENTATIONS OF THE DEVELOPER. FOR CORRECT REPRESENTATIONS, MAKE REFERENCE TO THIS BROCHURE AND TO THE DOCUMENTS REQUIRED BY 718.503, FLORIDA STATUTES, TO BE FURNISHED BY A DEVELOPER TO A BUYER OR LESSEE.



**SHOMA**