

# 888 BRICKELL MIAMI

## DOLCE & GABBANA



### RESIDENCE A

FLOORS 25 - 41

#### ROOMS

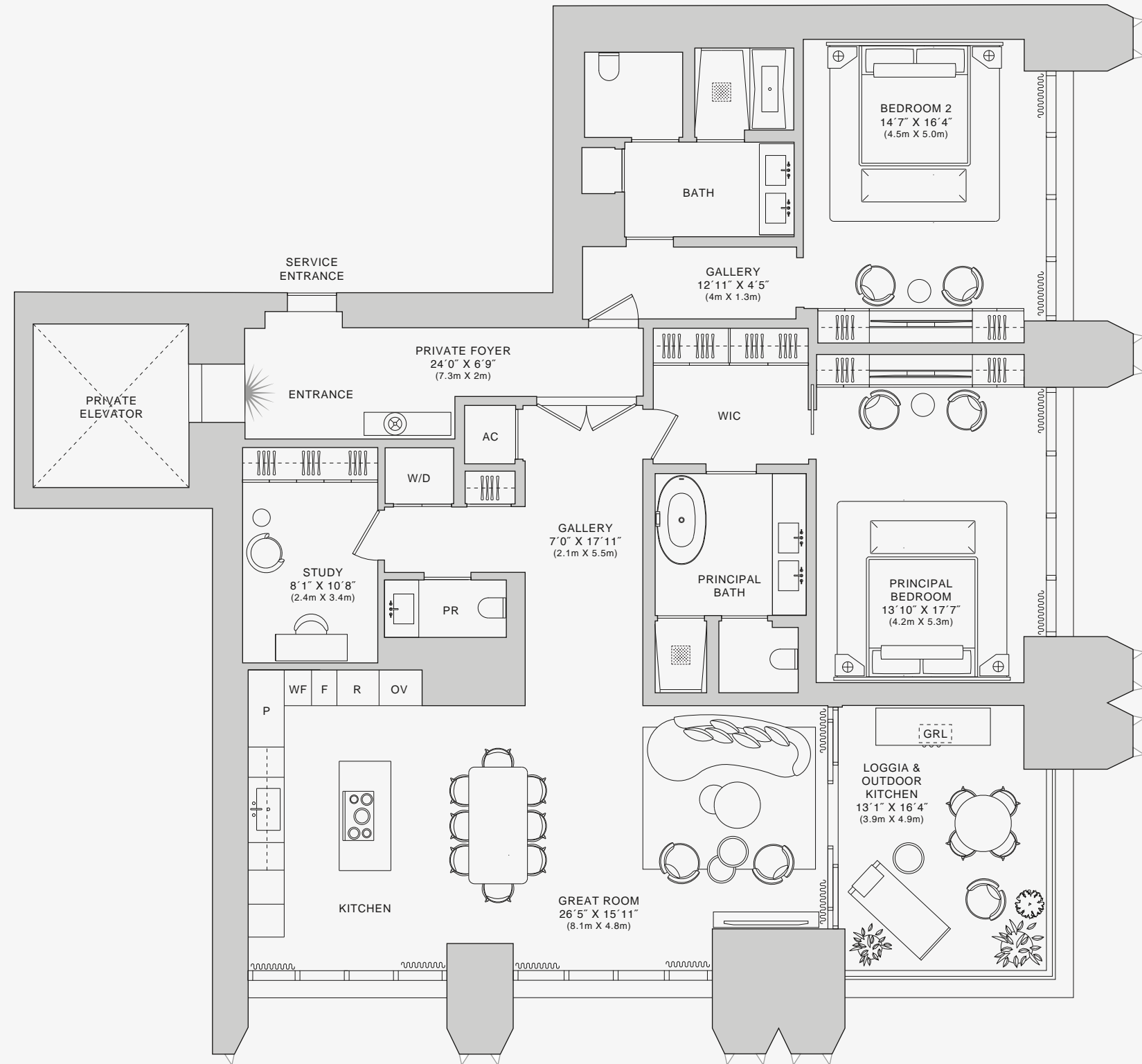
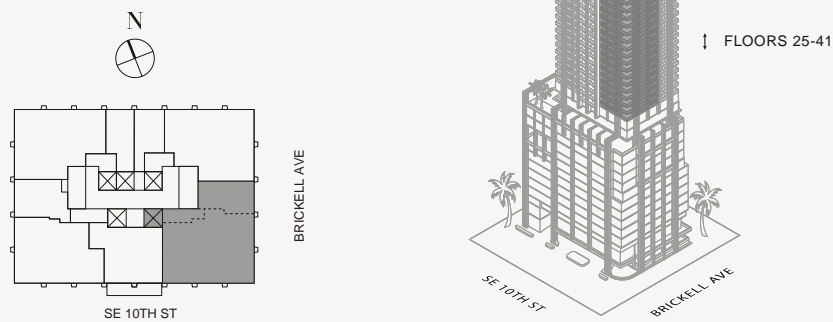
- 2 Bedrooms
- 2 Bathrooms
- Powder Room
- Study

#### SQUARE FOOTAGES (SQUARE METERS)

- Indoor: 2,559 SQF (237 SM)
- Outdoor: 235 SQF (21 SM)
- Total: 2,794 SQF (259 SM)

#### FEATURES

- 888 Suite & 888 Room
- Ceiling Height up to 10'
- Loggia & Outdoor Kitchen
- South - East Views



Biscayne Bay

Residences 25A, 40A and 41A are ADA compliant residences. Stated dimensions are measured to the exterior boundaries of the exterior walls and the centerline of interior demising walls and in fact vary from the dimensions that would be determined by using the description and definition of the "Unit" set forth in the Declaration (which generally only includes the interior airspace between the perimeter walls and excludes interior structural components). For your reference, the area of the Unit, determined in accordance with those defined unit boundaries, is set forth on Exhibit "3" to the Declaration of Condominium. Note that measurements of rooms set forth on this floor plan are generally taken at the greatest points of each given room (as if the room were a perfect rectangle), without regard for any cutouts. Accordingly, the area of the actual room will typically be smaller than the product obtained by multiplying the stated length times width. All dimensions are approximate and may vary with actual construction, and all floor plans and development plans are subject to change. The Condominium is not owned, developed or sold by Dolce & Gabbana S.r.l or any of its affiliates (the "Brand"). Developer uses Dolce & Gabbana marks pursuant to a license agreement with the Brand, terminable according to its terms. The Brand assumes no responsibility or liability in connection with the project, and makes no representation or warranty in respect thereof.



# 888 BRICKELL MIAMI

## DOLCE & GABBANA



### RESIDENCE A

FLOORS 25 - 41

#### ROOMS

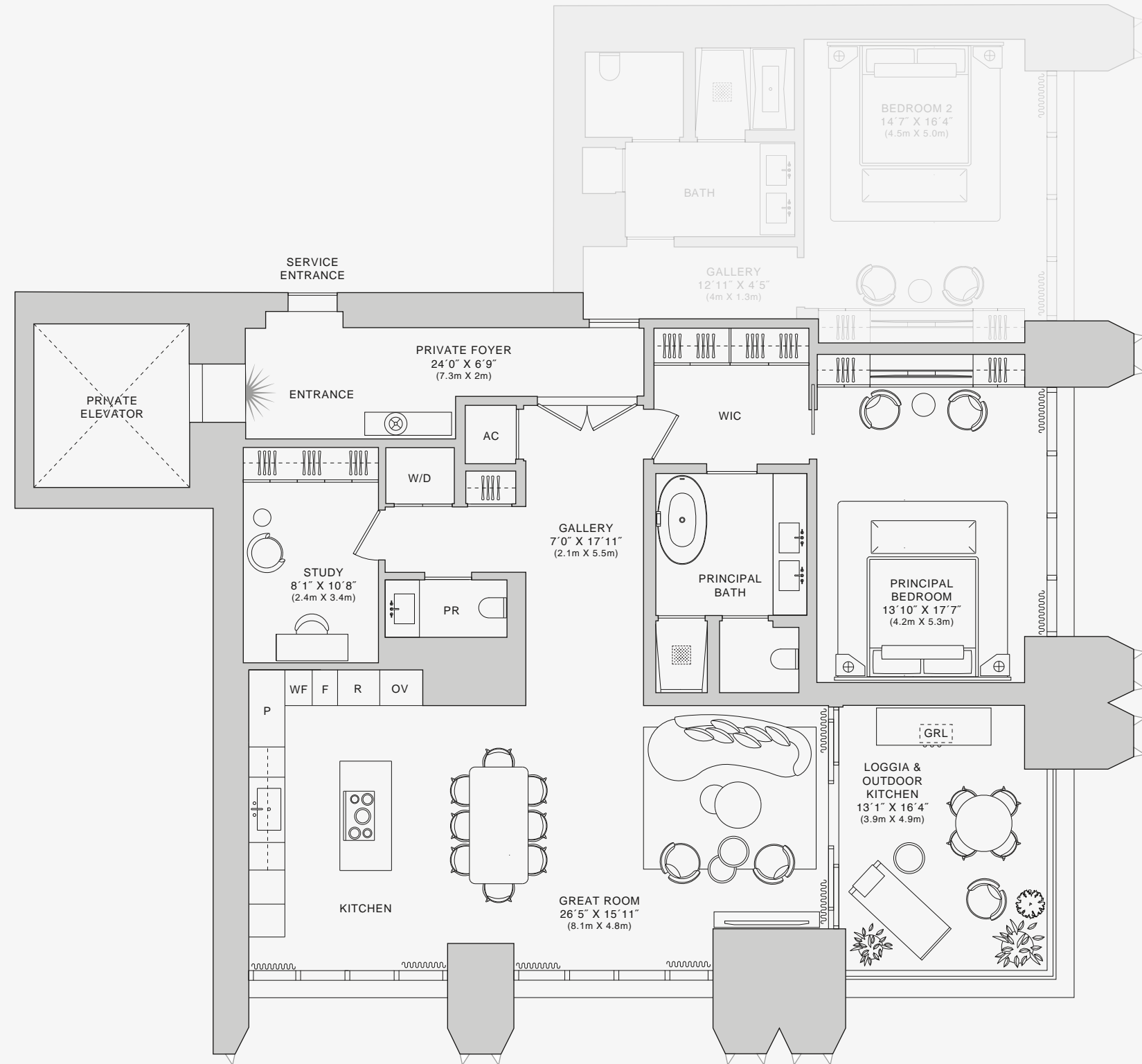
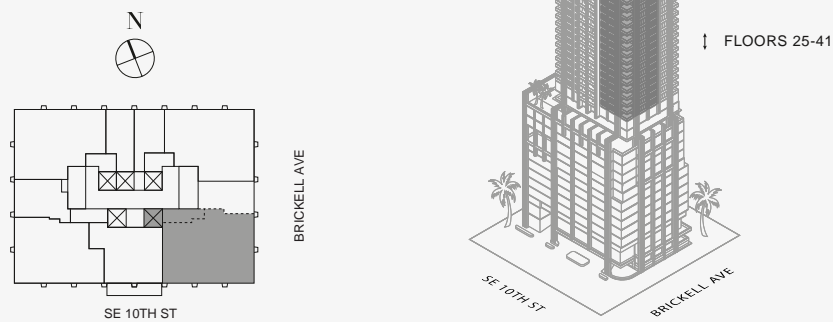
- 2 Bedrooms
- 2 Bathrooms
- Powder Room
- Study

#### SQUARE FOOTAGES (SQUARE METERS)

- Indoor: 2,559 SQF (237 SM)
- Outdoor: 235 SQF (21 SM)
- Total: 2,794 SQF (259 SM)

#### FEATURES

- 888 Suite & 888 Room
- Ceiling Height up to 10'
- Loggia & Outdoor Kitchen
- South - East Views



Biscayne Bay

Residences 25A, 40A and 41A are ADA compliant residences. Stated dimensions are measured to the exterior boundaries of the exterior walls and the centerline of interior demising walls and in fact vary from the dimensions that would be determined by using the description and definition of the "Unit" set forth in the Declaration (which generally only includes the interior airspace between the perimeter walls and excludes interior structural components). For your reference, the area of the Unit, determined in accordance with those defined unit boundaries, is set forth on Exhibit "3" to the Declaration of Condominium. Note that measurements of rooms set forth on this floor plan are generally taken at the greatest points of each given room (as if the room were a perfect rectangle), without regard for any cutouts. Accordingly, the area of the actual room will typically be smaller than the product obtained by multiplying the stated length times width. All dimensions are approximate and may vary with actual construction, and all floor plans and development plans are subject to change. The Condominium is not owned, developed or sold by Dolce & Gabbana S.r.l or any of its affiliates (the "Brand"). Developer uses Dolce & Gabbana marks pursuant to a license agreement with the Brand, terminable according to its terms. The Brand assumes no responsibility or liability in connection with the project, and makes no representation or warranty in respect thereof.

# 888 BRICKELL MIAMI

## DOLCE & GABBANA



### RESIDENCE A

FLOORS 25 - 41

#### ROOMS

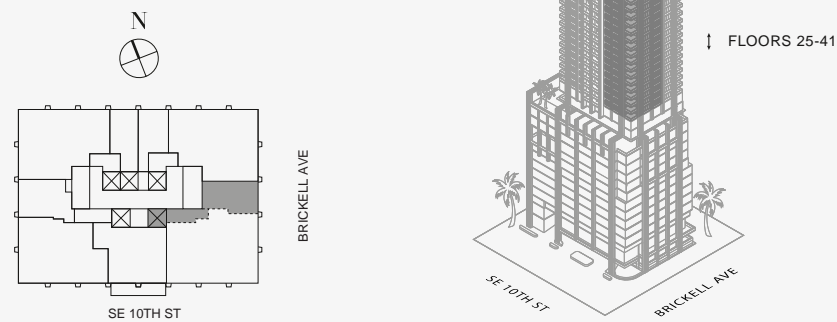
- 2 Bedrooms
- 2 Bathrooms
- Powder Room
- Study

#### SQUARE FOOTAGES (SQUARE METERS)

- Indoor: 2,559 SQF (237 SM)
- Outdoor: 235 SQF (21 SM)
- Total: 2,794 SQF (259 SM)

#### FEATURES

- 888 Suite & 888 Room
- Ceiling Height up to 10'
- Loggia & Outdoor Kitchen
- South - East Views



Biscayne Bay

Residences 25A, 40A and 41A are ADA compliant residences. Stated dimensions are measured to the exterior boundaries of the exterior walls and the centerline of interior demising walls and in fact vary from the dimensions that would be determined by using the description and definition of the "Unit" set forth in the Declaration (which generally only includes the interior airspace between the perimeter walls and excludes interior structural components). For your reference, the area of the Unit, determined in accordance with those defined unit boundaries, is set forth on Exhibit "3" to the Declaration of Condominium. Note that measurements of rooms set forth on this floor plan are generally taken at the greatest points of each given room (as if the room were a perfect rectangle), without regard for any cutouts. Accordingly, the area of the actual room will typically be smaller than the product obtained by multiplying the stated length times width. All dimensions are approximate and may vary with actual construction, and all floor plans and development plans are subject to change. The Condominium is not owned, developed or sold by Dolce & Gabbana S.r.l or any of its affiliates (the "Brand"). Developer uses Dolce & Gabbana marks pursuant to a license agreement with the Brand, terminable according to its terms. The Brand assumes no responsibility or liability in connection with the project, and makes no representation or warranty in respect thereof.

# 888 BRICKELL MIAMI

## DOLCE & GABBANA



### RESIDENCE A

FLOORS 44 - 54

#### ROOMS

- 2 Bedrooms
- 2 Bathrooms
- Powder Room
- Study

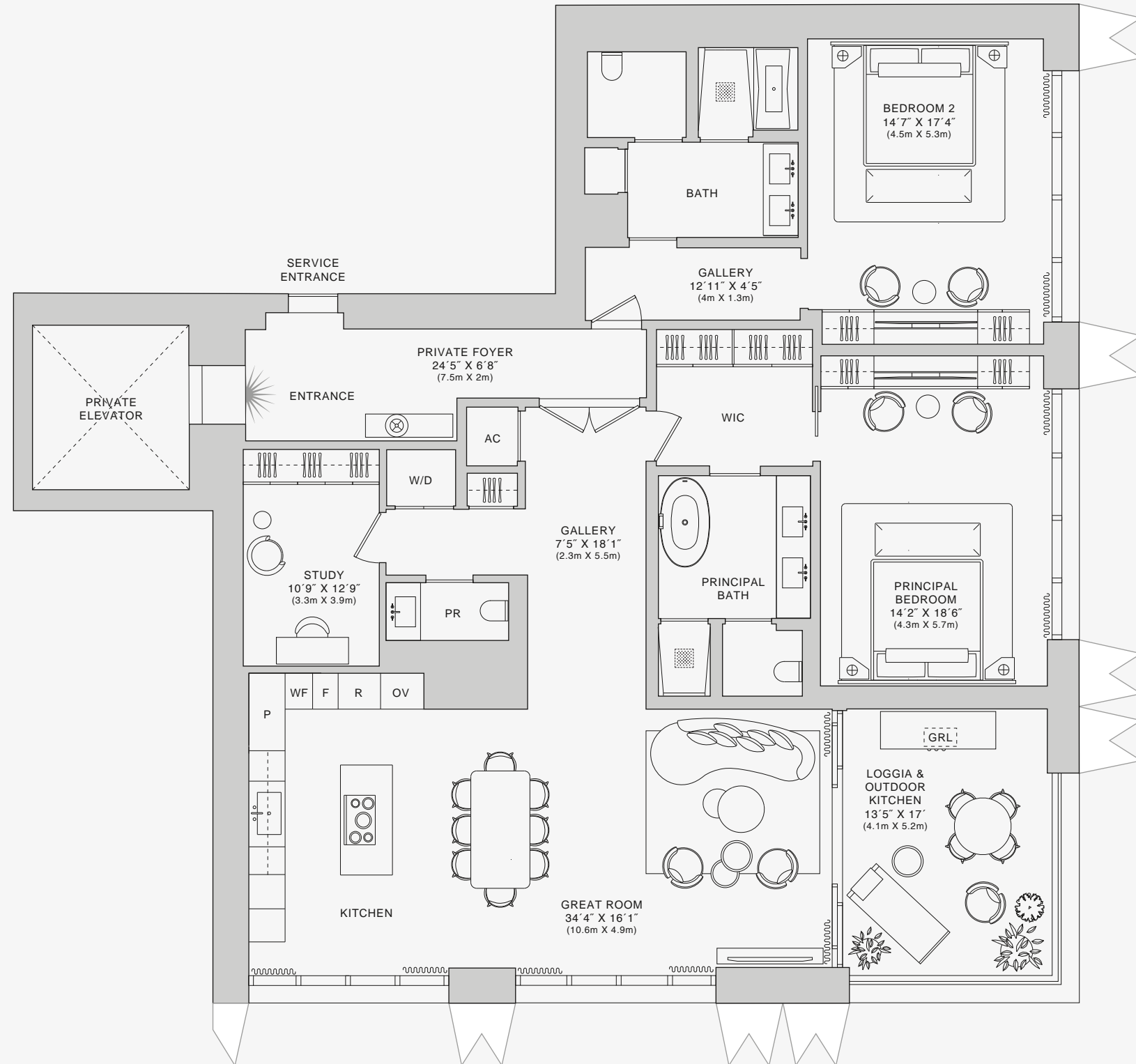
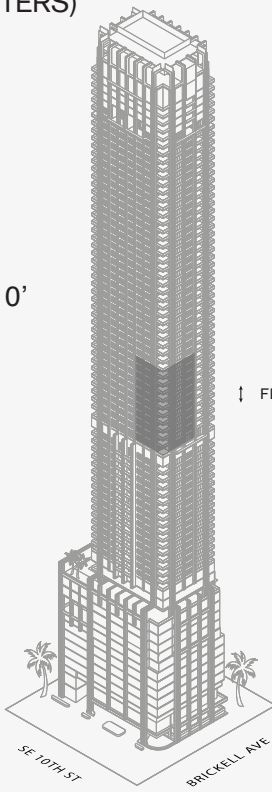
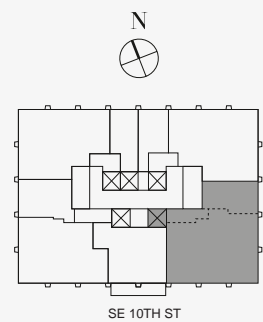
#### SQUARE FOOTAGES (SQUARE METERS)

- Indoor: 2,529 SQF (234 SM)
- Outdoor 237 SQF (22 SM)
- Total: 2,766 SQF (256 SM)

#### FEATURES

- 888 Suite & 888 Room
- Ceiling Height up to 11' - \*L47 up to 10'
- Loggia & Outdoor Kitchen
- South - East Views

FLOORS 44-54



Biscayne Bay

Stated dimensions are measured to the exterior boundaries of the exterior walls and the centerline of interior demising walls and in fact vary from the dimensions that would be determined by using the description and definition of the "Unit" set forth in the Declaration (which generally only includes the interior airspace between the perimeter walls and excludes interior structural components). For your reference, the area of the Unit, determined in accordance with those defined unit boundaries, is set forth on Exhibit "3" to the Declaration of Condominium. Note that measurements of rooms set forth on this floor plan are generally taken at the greatest points of each given room (as if the room were a perfect rectangle), without regard for any cutouts. Accordingly, the area of the actual room will typically be smaller than the product obtained by multiplying the stated length times width. All dimensions are approximate and may vary with actual construction, and all floor plans and development plans are subject to change. The Condominium is not owned, developed or sold by Dolce & Gabbana S.r.l or any of its affiliates (the "Brand"). Developer uses Dolce & Gabbana marks pursuant to a license agreement with the Brand, terminable according to its terms. The Brand assumes no responsibility or liability in connection with the project, and makes no representation or warranty in respect thereof.

# 888 BRICKELL MIAMI

## DOLCE & GABBANA



### RESIDENCE A

FLOORS 44 - 54

#### ROOMS

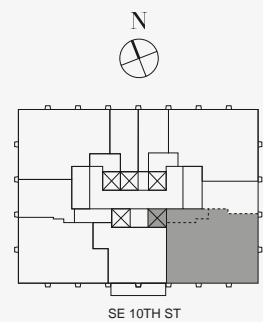
- 2 Bedrooms
- 2 Bathrooms
- Powder Room
- Study

#### SQUARE FOOTAGES (SQUARE METERS)

- Indoor: 2,529 SQF (234 SM)
- Outdoor 237 SQF (22 SM)
- Total: 2,766 SQF (256 SM)

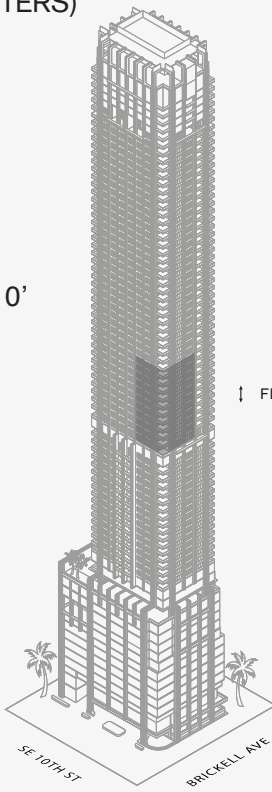
#### FEATURES

- 888 Suite & 888 Room
- Ceiling Height up to 11'- \*L47 up to 10'
- Loggia & Outdoor Kitchen
- South - East Views

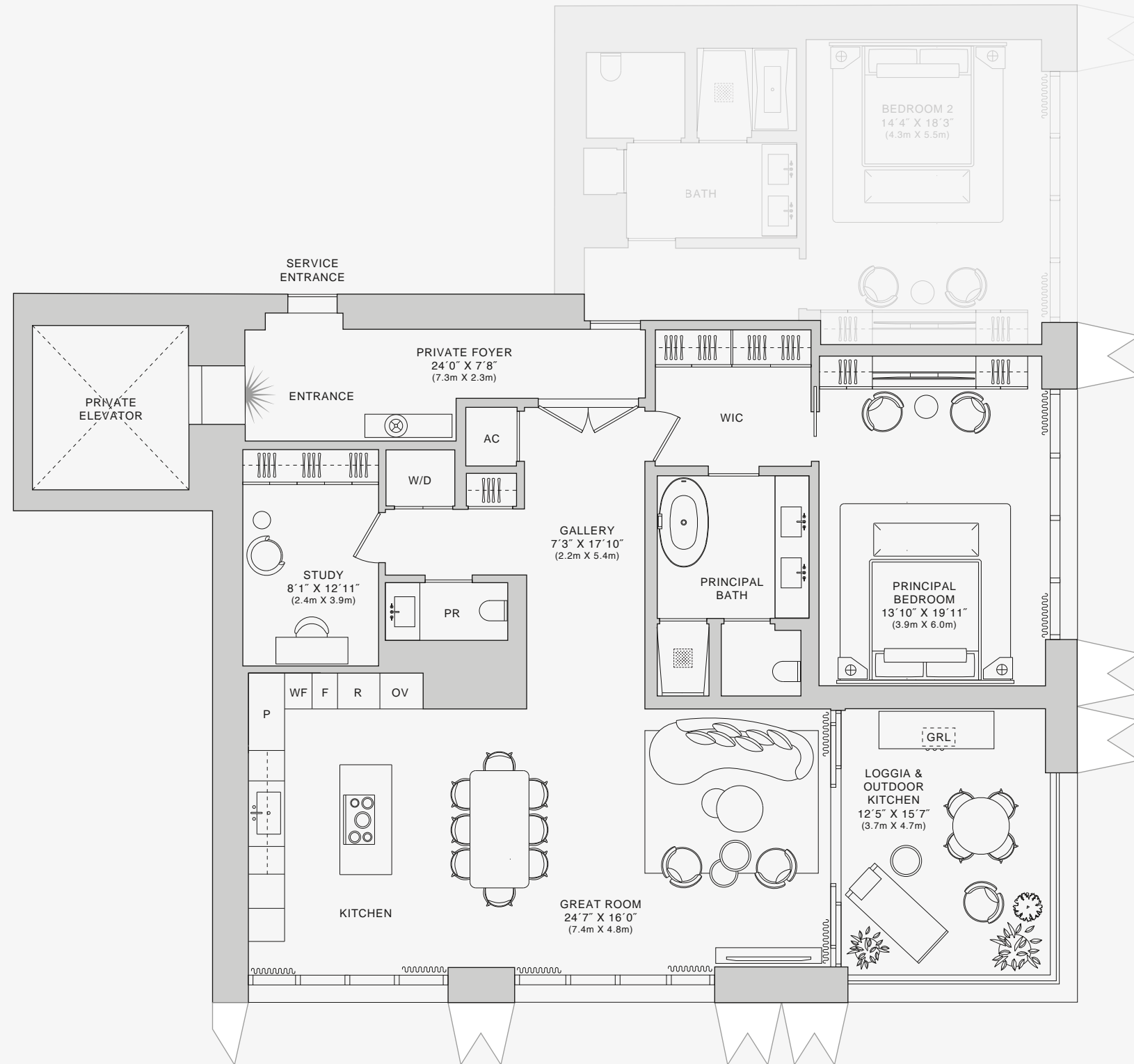


BRICKELL AVE

SE 10TH ST



FLOORS 44-54

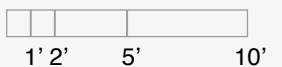


Biscayne Bay

Stated dimensions are measured to the exterior boundaries of the exterior walls and the centerline of interior demising walls and in fact vary from the dimensions that would be determined by using the description and definition of the "Unit" set forth in the Declaration (which generally only includes the interior airspace between the perimeter walls and excludes interior structural components). For your reference, the area of the Unit, determined in accordance with those defined unit boundaries, is set forth on Exhibit "3" to the Declaration of Condominium. Note that measurements of rooms set forth on this floor plan are generally taken at the greatest points of each given room (as if the room were a perfect rectangle), without regard for any cutouts. Accordingly, the area of the actual room will typically be smaller than the product obtained by multiplying the stated length times width. All dimensions are approximate and may vary with actual construction, and all floor plans and development plans are subject to change. The Condominium is not owned, developed or sold by Dolce & Gabbana S.r.l or any of its affiliates (the "Brand"). Developer uses Dolce & Gabbana marks pursuant to a license agreement with the Brand, terminable according to its terms. The Brand assumes no responsibility or liability in connection with the project, and makes no representation or warranty in respect thereof.



JDS DEVELOPMENT GROUP



# 888 BRICKELL MIAMI

## DOLCE & GABBANA



### RESIDENCE A

FLOORS 44 - 54

#### ROOMS

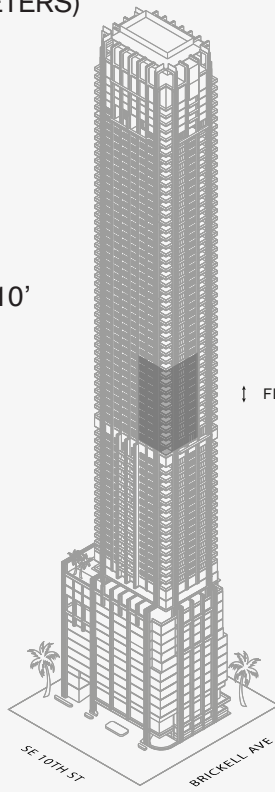
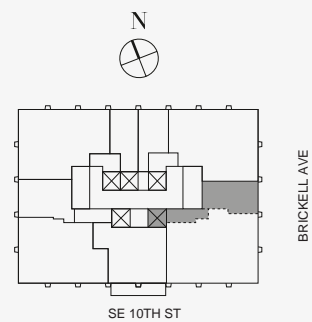
- 2 Bedrooms
- 2 Bathrooms
- Powder Room
- Study

#### SQUARE FOOTAGES (SQUARE METERS)

- Indoor: 2,529 SQF (234 SM)
- Outdoor 237 SQF (22 SM)
- Total: 2,766 SQF (256 SM)

#### FEATURES

- 888 Suite & 888 Room
- Ceiling Height up to 11'- \*L47 up to 10'
- Loggia & Outdoor Kitchen
- South - East Views



FLOORS 44-54



Biscayne Bay

Stated dimensions are measured to the exterior boundaries of the exterior walls and the centerline of interior demising walls and in fact vary from the dimensions that would be determined by using the description and definition of the "Unit" set forth in the Declaration (which generally only includes the interior airspace between the perimeter walls and excludes interior structural components). For your reference, the area of the Unit, determined in accordance with those defined unit boundaries, is set forth on Exhibit "3" to the Declaration of Condominium. Note that measurements of rooms set forth on this floor plan are generally taken at the greatest points of each given room (as if the room were a perfect rectangle), without regard for any cutouts. Accordingly, the area of the actual room will typically be smaller than the product obtained by multiplying the stated length times width. All dimensions are approximate and may vary with actual construction, and all floor plans and development plans are subject to change. The Condominium is not owned, developed or sold by Dolce & Gabbana S.r.l or any of its affiliates (the "Brand"). Developer uses Dolce & Gabbana marks pursuant to a license agreement with the Brand, terminable according to its terms. The Brand assumes no responsibility or liability in connection with the project, and makes no representation or warranty in respect thereof.



JDS DEVELOPMENT GROUP

