

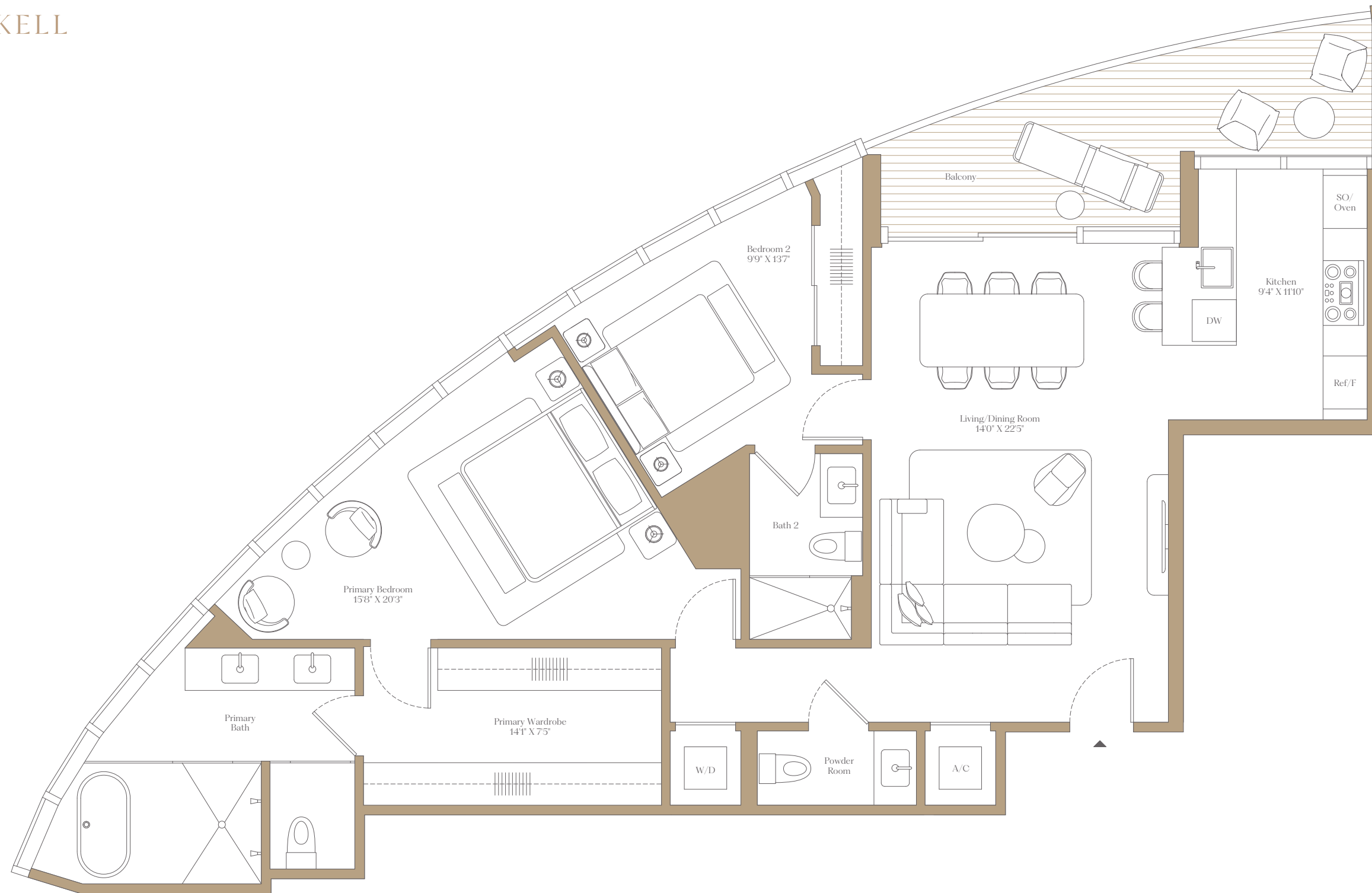


BRICKELL

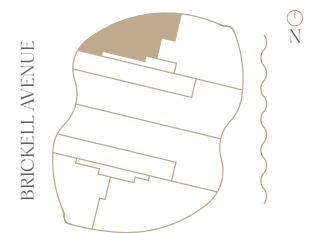
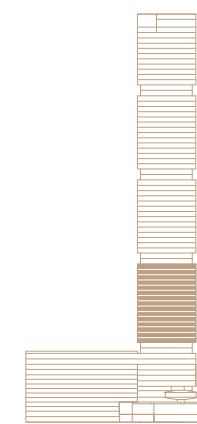
COLLECTION RESIDENCE LEVELS  
2 E 12-27

2 Bedrooms  
2 Bathrooms  
Powder Room

Interior: 1,364 SF 127 SM  
Exterior: 151 SF 14 SM  
Total: 1,515 SF 141 SM



BISCAYNE BAY



BY NOBU • FOSTER + PARTNERS

ORAL REPRESENTATIONS CANNOT BE RELIED UPON AS CORRECTLY STATING THE REPRESENTATIONS OF THE DEVELOPER. FOR CORRECT REPRESENTATIONS, MAKE REFERENCE TO THIS BROCHURE AND TO THE DOCUMENTS REQUIRED BY SECTION 718.503, FLORIDA STATUTES, TO BE FURNISHED BY A DEVELOPER TO A BUYER OR LESSEE.

619 Brickell Condominium a/k/a 619 Brickell BY NOBU • FOSTER + PARTNERS

SEE LEGAL DISCLAIMERS ON FINAL PAGE

There are various recognized methods for calculating the square footage of a Unit. The square footage and dimensions stated hereon are measured to the exterior boundaries of the exterior walls and the centerline of interior demising walls and in fact vary from the dimensions that would be determined by using the description and definition of the "Unit" set forth in the Declaration (which generally only includes the interior airspace between the perimeter walls and excludes interior structural components). For your reference, the area of the Unit, determined in accordance with those defined unit boundaries, is set forth in the Declaration. Note that measurements of rooms set forth on this floor plan are generally taken at the greatest points of each given room (as if the room were a perfect rectangle), without regard for any cutouts. Accordingly, the area of the actual room will typically be smaller than the product obtained by multiplying the stated length times width. The dimensions and square footage stated for this Unit floor plan are approximate and may vary with actual construction, and all floor plans and development plans are subject to change. All depictions of furnishings, appliances, built-ins, counters, soffits, floor coverings, lighting and other matters of detail, including, without limitation, items of finish and decoration, are conceptual only and are not necessarily included in each Unit. Balconies depicted may vary by floor and are not included in the Unit boundaries. Consult the Developer's prospectus for information on what is offered with the Unit.



BRICKELL

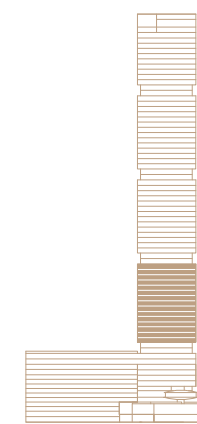
COLLECTION RESIDENCE LEVELS  
2 F 12-27

2 Bedrooms  
2 Bathrooms  
Powder Room

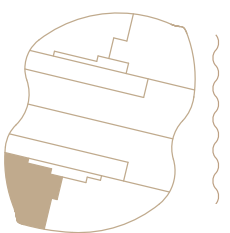
Interior: 1,367 SF 127 SM  
Exterior: 151 SF 14 SM  
Total: 1,518 SF 141 SM



BISCAYNE BAY



BRICKELL AVENUE



02

BY NOBU • FOSTER + PARTNERS

ORAL REPRESENTATIONS CANNOT BE RELIED UPON AS CORRECTLY STATING THE REPRESENTATIONS OF THE DEVELOPER. FOR CORRECT REPRESENTATIONS, MAKE REFERENCE TO THIS BROCHURE AND TO THE DOCUMENTS REQUIRED BY SECTION 718.503, FLORIDA STATUTES, TO BE FURNISHED BY A DEVELOPER TO A BUYER OR LESSEE.

619 Brickell Condominium a/k/a 619 Brickell BY NOBU • FOSTER + PARTNERS

SEE LEGAL DISCLAIMERS ON FINAL PAGE

There are various recognized methods for calculating the square footage of a Unit. The square footage and dimensions stated hereon are measured to the exterior boundaries of the exterior walls and the centerline of interior demising walls and in fact vary from the dimensions that would be determined by using the description and definition of the "Unit" set forth in the Declaration (which generally only includes the interior airspace between the perimeter walls and excludes interior structural components). For your reference, the area of the Unit, determined in accordance with those defined unit boundaries, is set forth in the Declaration. Note that measurements of rooms set forth on this floor plan are generally taken at the greatest points of each given room (as if the room were a perfect rectangle), without regard for any cutouts. Accordingly, the area of the actual room will typically be smaller than the product obtained by multiplying the stated length times width. The dimensions and square footage stated for this Unit floor plan are approximate and may vary with actual construction, and all floor plans and development plans are subject to change. All depictions of furnishings, appliances, built-ins, counters, soffits, floor coverings, lighting and other matters of detail, including, without limitation, items of finish and decoration, are conceptual only and are not necessarily included in each Unit. Balconies depicted may vary by floor and are not included in the Unit boundaries. Consult the Developer's prospectus for information on what is offered with the Unit.

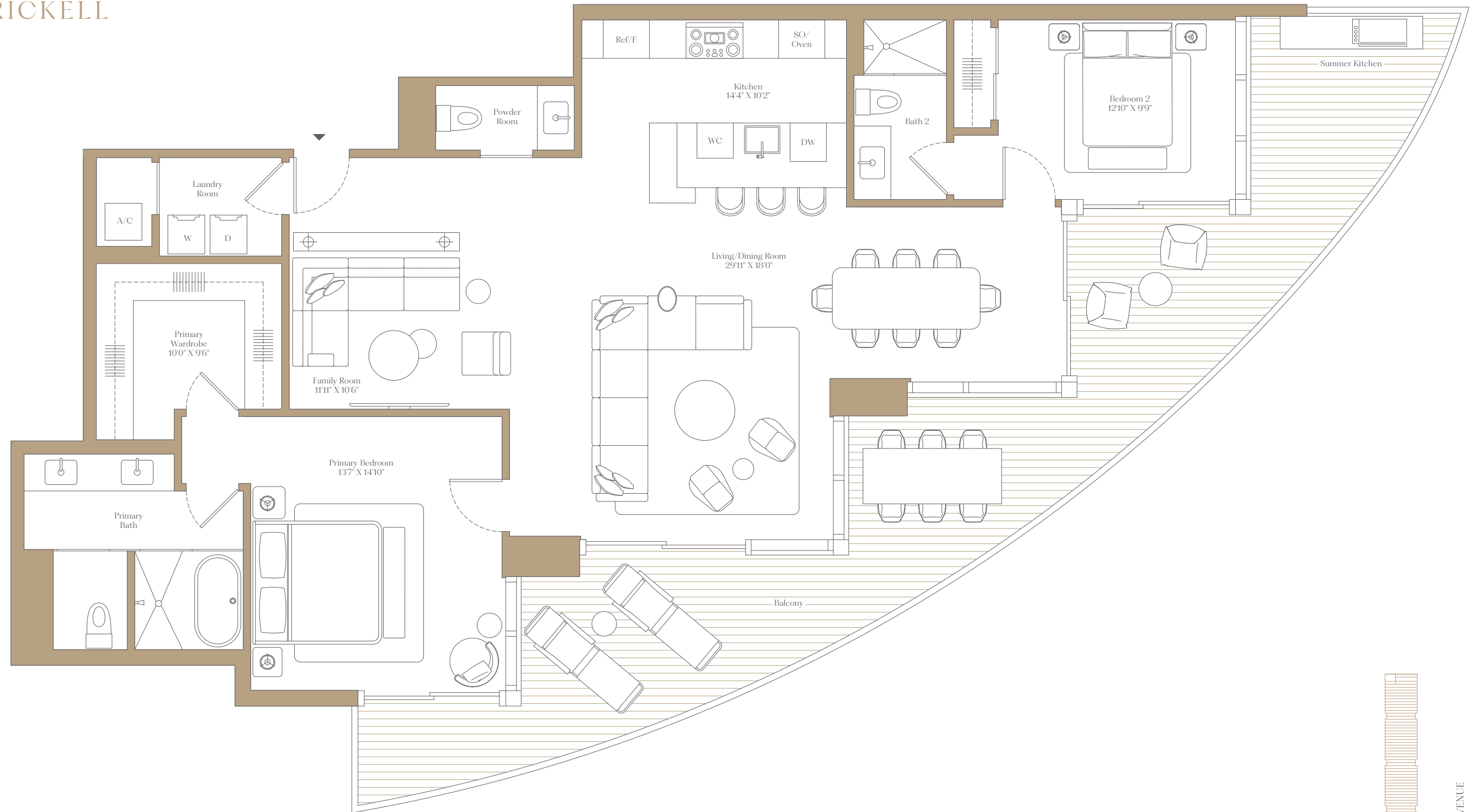


BRICKELL

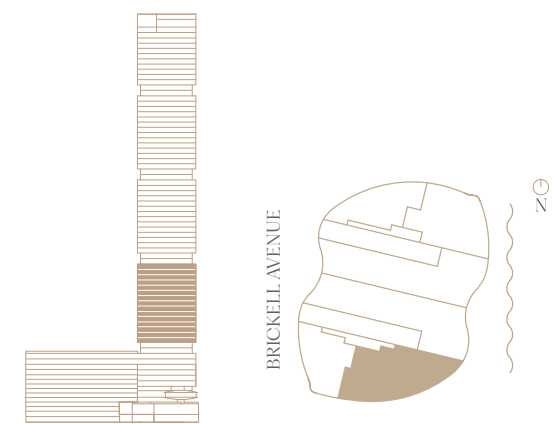
COLLECTION RESIDENCE LEVELS  
2 A 12-27

2 Bedrooms  
2 Bathrooms  
Powder Room  
Den

Interior: 1,686 SF 157 SM  
Exterior: 549 SF 51 SM  
Total: 2,235 SF 208 SM



BISCAYNE BAY



BY NOBU • FOSTER + PARTNERS

ORAL REPRESENTATIONS CANNOT BE RELIED UPON AS CORRECTLY STATING THE REPRESENTATIONS OF THE DEVELOPER. FOR CORRECT REPRESENTATIONS, MAKE REFERENCE TO THIS BROCHURE AND TO THE DOCUMENTS REQUIRED BY SECTION 718.503, FLORIDA STATUTES, TO BE FURNISHED BY A DEVELOPER TO A BUYER OR LESSEE.

619 Brickell Condominium a/k/a 619 Brickell BY NOBU • FOSTER + PARTNERS

SEE LEGAL DISCLAIMERS ON FINAL PAGE

There are various recognized methods for calculating the square footage of a Unit. The square footage and dimensions stated hereon are measured to the exterior boundaries of the exterior walls and the centerline of interior demising walls and in fact vary from the dimensions that would be determined by using the description and definition of the "Unit" set forth in the Declaration (which generally only includes the interior airspace between the perimeter walls and excludes interior structural components). For your reference, the area of the Unit, determined in accordance with those defined unit boundaries, is set forth in the Declaration. Note that measurements of rooms set forth on this floor plan are generally taken at the greatest points of each given room (as if the room were a perfect rectangle), without regard for any cutouts. Accordingly, the area of the actual room will typically be smaller than the product obtained by multiplying the stated length times width. The dimensions and square footage stated for this Unit floor plan are approximate and may vary with actual construction, and all floor plans and development plans are subject to change. All depictions of furnishings, appliances, built-ins, counters, soffits, floor coverings, lighting and other matters of detail, including, without limitation, items of finish and decoration, are conceptual only and are not necessarily included in each Unit. Balconies depicted may vary by floor and are not included in the Unit boundaries. Consult the Developer's prospectus for information on what is offered with the Unit.

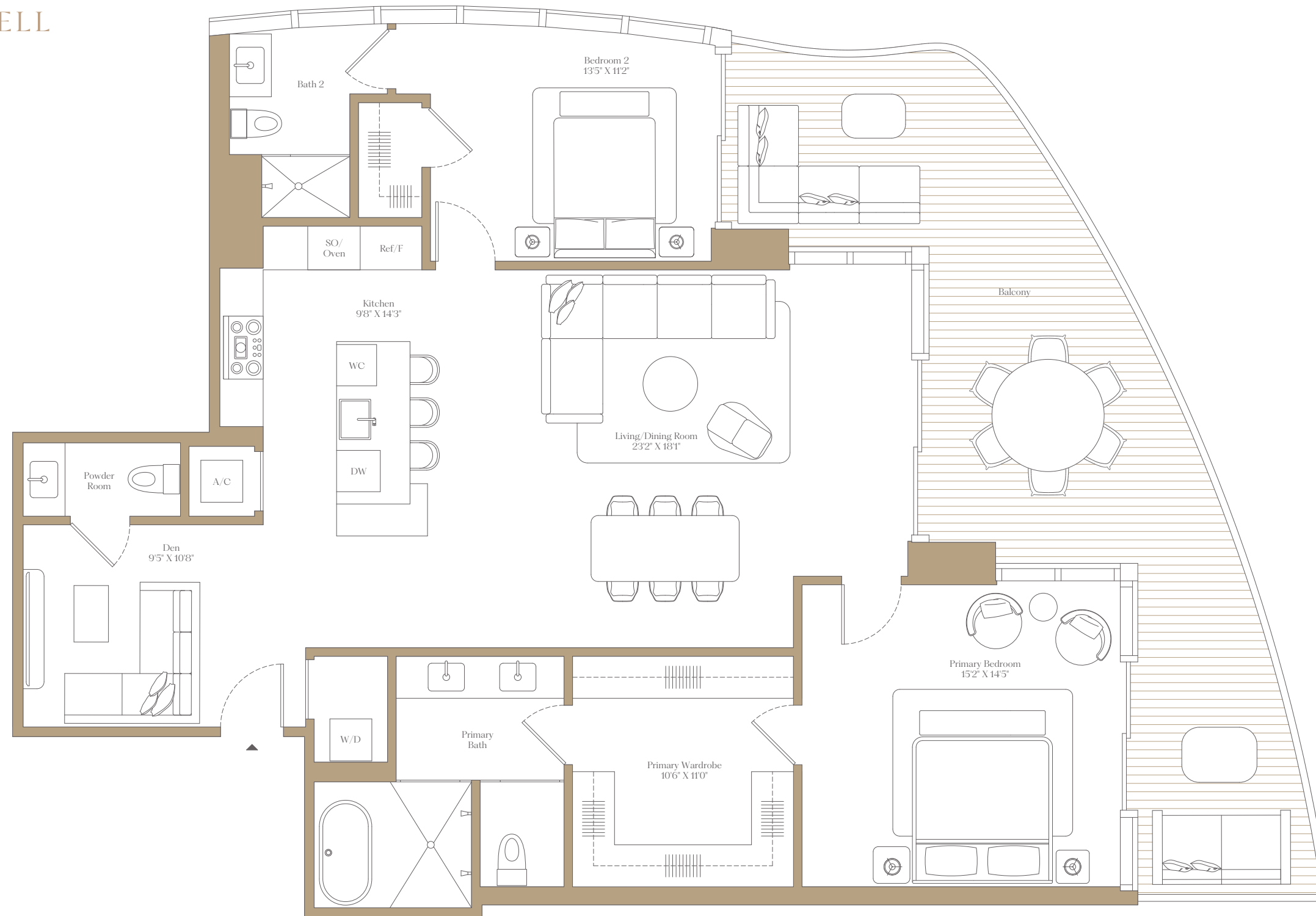


BRICKELL

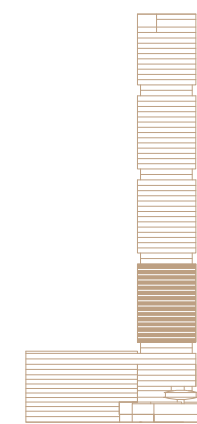
COLLECTION RESIDENCE LEVELS  
2 D 12-27

2 Bedrooms  
2 Bathrooms  
Powder Room  
Den

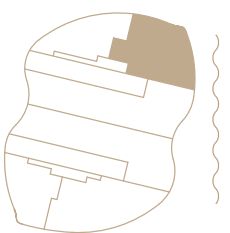
Interior: 1,656 SF 154 SM  
Exterior: 448 SF 42 SM  
Total: 2,104 SF 195 SM



BISCAYNE BAY



BRICKELL AVENUE



02

BY NOBU • FOSTER + PARTNERS

ORAL REPRESENTATIONS CANNOT BE RELIED UPON AS CORRECTLY STATING THE REPRESENTATIONS OF THE DEVELOPER. FOR CORRECT REPRESENTATIONS, MAKE REFERENCE TO THIS BROCHURE AND TO THE DOCUMENTS REQUIRED BY SECTION 718.503, FLORIDA STATUTES, TO BE FURNISHED BY A DEVELOPER TO A BUYER OR LESSEE.

619 Brickell Condominium a/k/a 619 Brickell BY NOBU • FOSTER + PARTNERS

SEE LEGAL DISCLAIMER ON FINAL PAGE

There are various recognized methods for calculating the square footage of a Unit. The square footage and dimensions stated hereon are measured to the exterior boundaries of the exterior walls and the centerline of interior demising walls and in fact vary from the dimensions that would be determined by using the description and definition of the "Unit" set forth in the Declaration (which generally only includes the interior airspace between the perimeter walls and excludes interior structural components). For your reference, the area of the Unit, determined in accordance with those defined unit boundaries, is set forth in the Declaration. Note that measurements of rooms set forth on this floor plan are generally taken at the greatest points of each given room (as if the room were a perfect rectangle), without regard for any cutouts. Accordingly, the area of the actual room will typically be smaller than the product obtained by multiplying the stated length times width. The dimensions and square footage stated for this Unit floor plan are approximate and may vary with actual construction, and all floor plans and development plans are subject to change. All depictions of furnishings, appliances, built-ins, counters, soffits, floor coverings, lighting and other matters of detail, including, without limitation, items of finish and decoration, are conceptual only and are not necessarily included in each Unit. Balconies depicted may vary by floor and are not included in the Unit boundaries. Consult the Developer's prospectus for information on what is offered with the Unit.



BRICKELL

COLLECTION

2

RESIDENCE

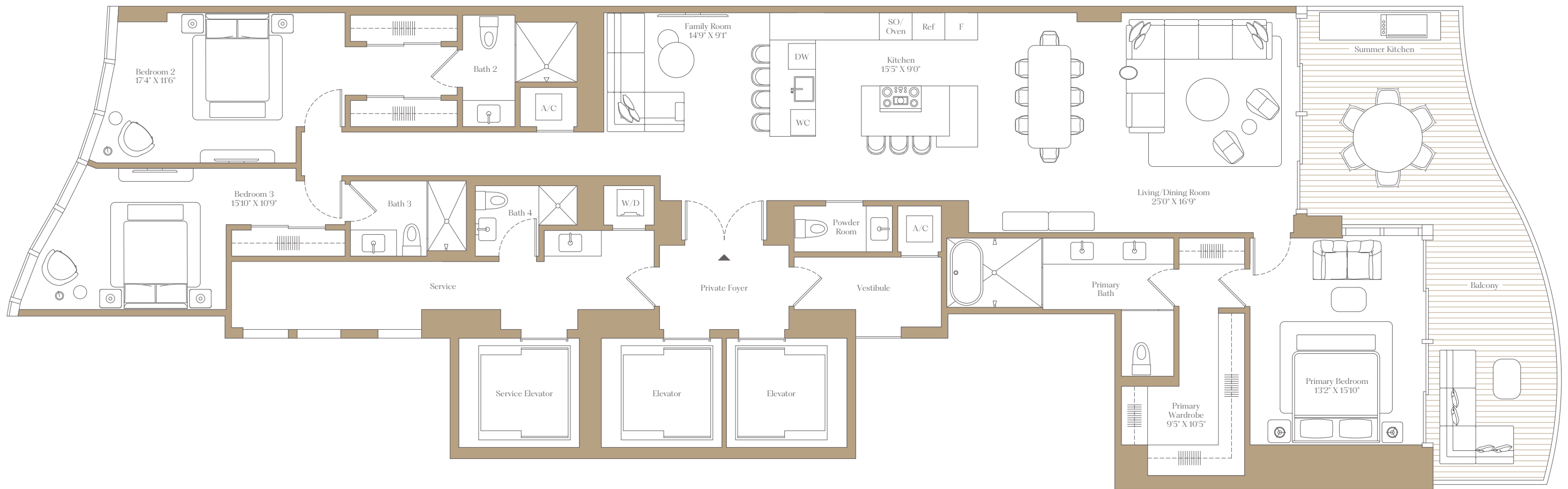
B

LEVELS

12-27

3 Bedrooms  
4 Bathrooms  
Powder Room  
Den

Interior: 2,754 SF 256 SM  
Exterior: 409 SF 38 SM  
Total: 3,163 SF 294 SM

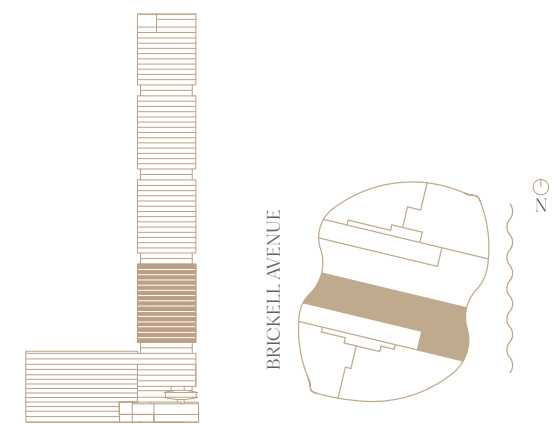


BISCAYNE BAY

BY NOBU • FOSTER + PARTNERS

ORAL REPRESENTATIONS CANNOT BE RELIED UPON AS CORRECTLY STATING THE REPRESENTATIONS OF THE DEVELOPER. FOR CORRECT REPRESENTATIONS, MAKE REFERENCE TO THIS BROCHURE AND TO THE DOCUMENTS REQUIRED BY SECTION 718.503, FLORIDA STATUTES, TO BE FURNISHED BY A DEVELOPER TO A BUYER OR LESSEE.

619 Brickell Condominium a/k/a 619 Brickell BY NOBU • FOSTER + PARTNERS



BRICKELL AVENUE

SEE LEGAL DISCLAIMERS ON FINAL PAGE

There are various recognized methods for calculating the square footage of a Unit. The square footage and dimensions stated hereon are measured to the exterior boundaries of the exterior walls and the centerline of interior demising walls and in fact vary from the dimensions that would be determined by using the description and definition of the "Unit" set forth in the Declaration (which generally only includes the interior airspace between the perimeter walls and excludes interior structural components). For your reference, the area of the Unit, determined in accordance with those defined unit boundaries, is set forth in the Declaration. Note that measurements of rooms set forth on this floor plan are generally taken at the greatest points of each given room (as if the room were a perfect rectangle), without regard for any cutouts. Accordingly, the area of the actual room will typically be smaller than the product obtained by multiplying the stated length times width. The dimensions and square footage stated for this Unit floor plan are approximate and may vary with actual construction, and all floor plans and development plans are subject to change. All depictions of furnishings, appliances, built-ins, counters, soffits, floor coverings, lighting and other matters of detail, including, without limitation, items of finish and decoration, are conceptual only and are not necessarily included in each Unit. Balconies depicted may vary by floor and are not included in the Unit boundaries. Consult the Developer's prospectus for information on what is offered with the Unit.

# 619

## BRICKELL

COLLECTION

2

RESIDENCE

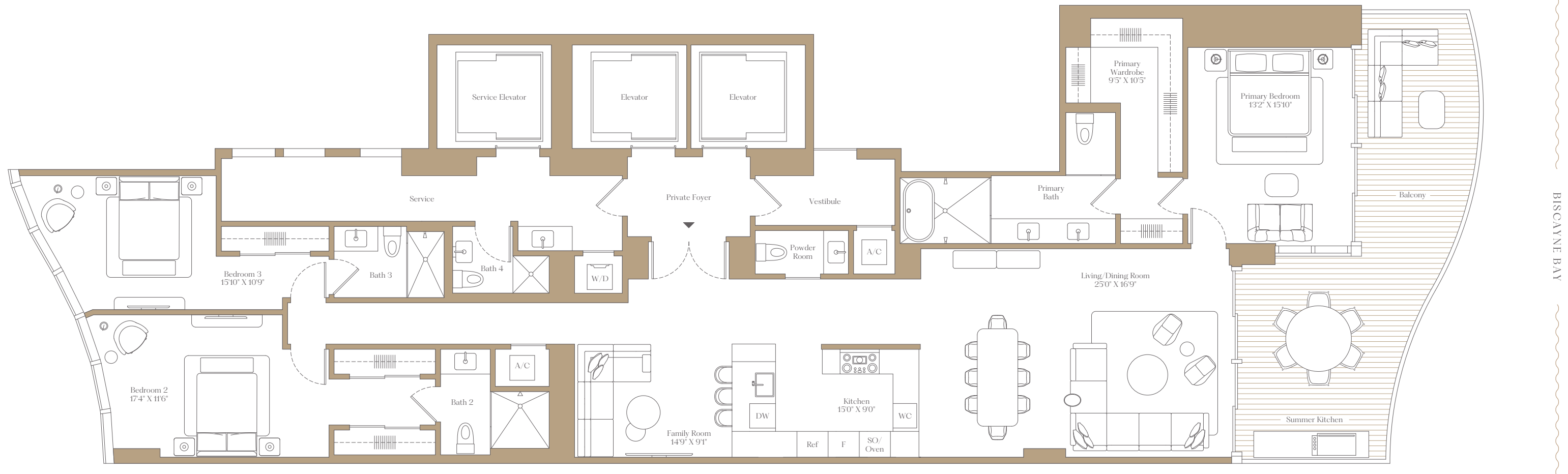
C

LEVELS

12-27

3 Bedrooms  
4 Bathrooms  
Powder Room  
Den

Interior: 2,747 SF 255 SM  
Exterior: 411 SF 38 SM  
Total: 3,158 SF 293 SM

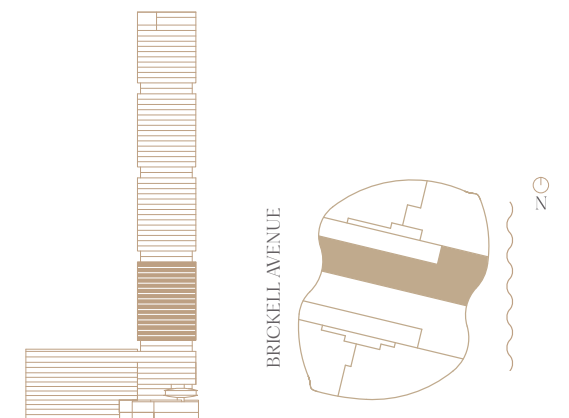


BISCAYNE BAY

BY NOBU • FOSTER + PARTNERS

**ORAL REPRESENTATIONS CANNOT BE RELIED UPON AS CORRECTLY STATING THE REPRESENTATIONS OF THE DEVELOPER. FOR CORRECT REPRESENTATIONS, MAKE REFERENCE TO THIS BROCHURE AND TO THE DOCUMENTS REQUIRED BY SECTION 718.503, FLORIDA STATUTES, TO BE FURNISHED BY A DEVELOPER TO A BUYER OR LESSEE.**

619 Brickell Condominium a/k/a 619 Brickell BY NOBU • FOSTER + PARTNERS



SEE LEGAL DISCLAIMERS ON FINAL PAGE

There are various recognized methods for calculating the square footage of a Unit. The square footage and dimensions stated hereon are measured to the exterior boundaries of the exterior walls and the centerline of interior demising walls and in fact vary from the dimensions that would be determined by using the description and definition of the "Unit" set forth in the Declaration (which generally only includes the interior airspace between the perimeter walls and excludes interior structural components). For your reference, the area of the Unit, determined in accordance with those defined unit boundaries, is set forth in the Declaration. Note that measurements of rooms set forth on this floor plan are generally taken at the greatest points of each given room (as if the room were a perfect rectangle), without regard for any cutouts. Accordingly, the area of the actual room will typically be smaller than the product obtained by multiplying the stated length times width. The dimensions and square footage stated for this Unit floor plan are approximate and may vary with actual construction, and all floor plans and development plans are subject to change. All depictions of furnishings, appliances, built-ins, counters, soffits, floor coverings, lighting and other matters of detail, including, without limitation, items of finish and decoration, are conceptual only and are not necessarily included in each Unit. Balconies depicted may vary by floor and are not included in the Unit boundaries. Consult the Developer's prospectus for information on what is offered with the Unit.