



**THE RITZ-CARLTON
RESIDENCES**

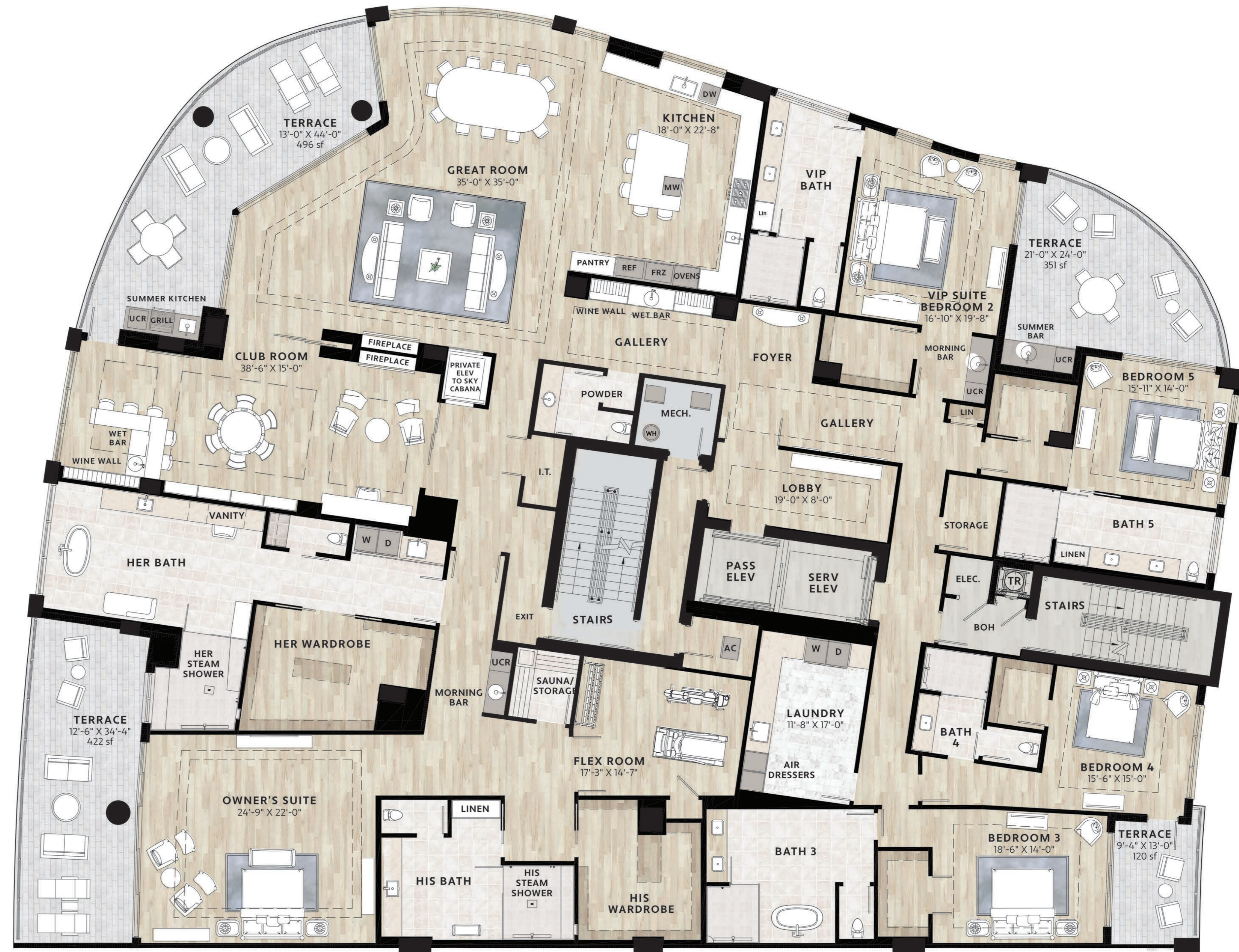
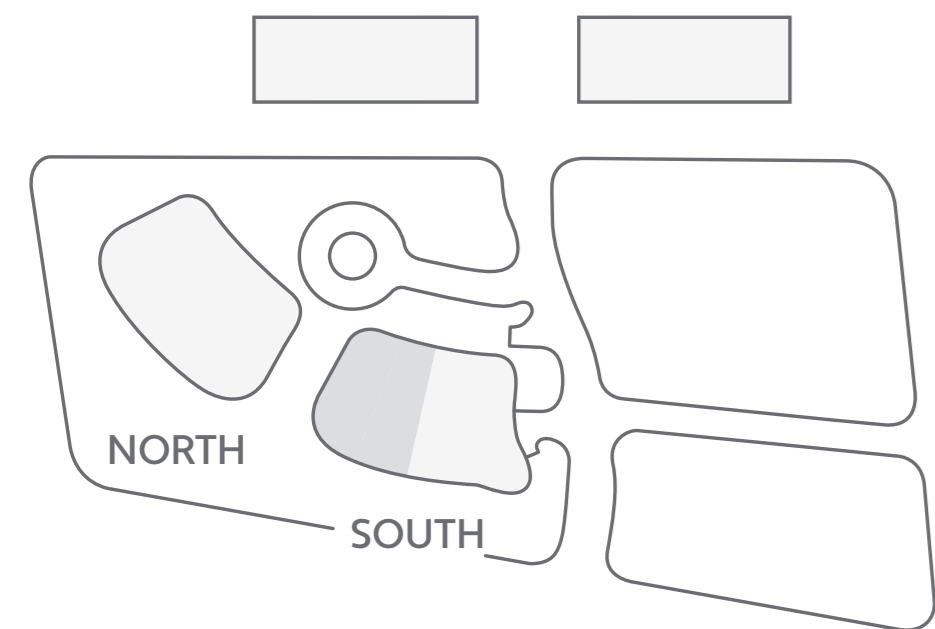
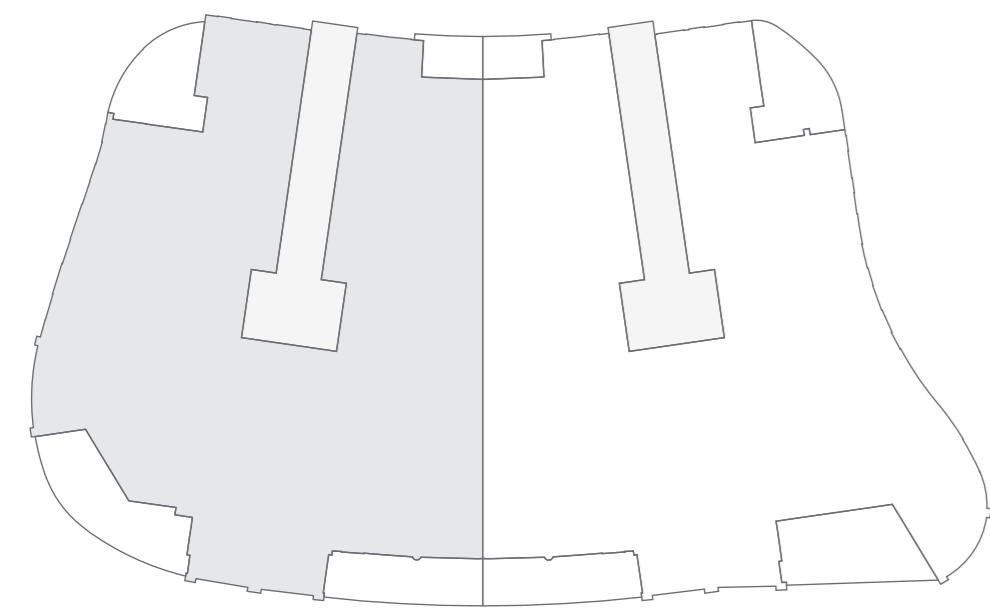
NAPLES

TOWER RESIDENCES GRAND PENTHOUSE SOUTH 02

5 Bedrooms • 6.5 Baths • 12-foot Ceilings

Owner's Suite with His and Her Bath & Wardrobe, Flex Room,
Sauna & Morning Bar • VIP Suite with En Suite Bath • Great Room
Club Room • Private Passenger & Service Elevators • Private Lobby
Foyer & Gallery • Expansive Terraces • Private Rooftop

First Floor Living	8,783 sq.ft.
Sky Cabana	1,089 sq.ft.
Total Living Area	9,872 sq.ft.
First Floor Terraces	1,389 sq.ft.
Rooftop Terraces	1,849 sq.ft.
Rooftop Pool & Spa	300 sq.ft.
Total Residence	13,410 sq.ft.



ORAL REPRESENTATIONS CANNOT BE RELIED UPON AS CORRECTLY STATING THE REPRESENTATIONS OF THE DEVELOPER. FOR CORRECT REPRESENTATIONS REFERENCE SHOULD BE MADE TO THE DOCUMENTS REQUIRED BY SECTION 718.503, FLORIDA STATUTES, TO BE FURNISHED BY A DEVELOPER TO A BUYER OR LESSEE. STATED LIVING AREA IS MEASURED TO THE EXTERIOR FACE OF EXTERIOR WALLS, WITHOUT EXCLUDING AREAS THAT MAY BE OCCUPIED BY COLUMNS OR OTHER STRUCTURAL COMPONENTS. THIS METHOD OF MEASUREMENT VARIES FROM, AND IS LARGER THAN, THE DIMENSIONS THAT WOULD BE DETERMINED BY USING THE DESCRIPTION AND THE DEFINITION OF THE UNIT SET FORTH IN THE DECLARATION (WHICH GENERALLY ONLY INCLUDES THE INTERIOR AIRSPACE BETWEEN THE PERIMETER WALLS AND EXCLUDES STRUCTURAL COMPONENTS). ALL DIMENSIONS ARE APPROXIMATE AND MAY VARY WITH ACTUAL CONSTRUCTION. MEASUREMENTS OF ROOMS/TERRACES SET FORTH ON THIS FLOOR PLAN ARE TAKEN AT THE GREATEST POINTS OF EACH ROOM/TERRACE (AS IF THE ROOM WERE A PERFECT RECTANGLE), WITHOUT REGARD FOR ANY CUTOUPS OR IRREGULARITIES. ACCORDINGLY, THE AREA OF THE ACTUAL ROOM WILL TYPICALLY BE SMALLER THAN THE PRODUCT OBTAINED BY MULTIPLYING THE STATED LENGTH TIMES WIDTH. ALL FLOOR PLANS AND DEVELOPMENT PLANS ARE SUBJECT TO CHANGE. THE DEVELOPER EXPRESSLY RESERVES THE RIGHT TO MAKE MODIFICATIONS, REVISIONS, AND CHANGES WITHOUT NOTICE. ALL DEPICTIONS OF FURNISHINGS, APPLIANCES, BUILT-INS, COUNTERS, SOFFITS, FLOOR COVERINGS, LIGHTING, LANDSCAPING AND OTHER MATTERS OF DETAIL, INCLUDING, WITHOUT LIMITATION, ITEMS OF FINISH AND DECORATION, ARE CONCEPTUAL ONLY AND ARE NOT NECESSARILY INCLUDED IN EACH UNIT. CONSULT YOUR PROSPECTUS AND PURCHASE AGREEMENT. THE RITZ-CARLTON RESIDENCES, NAPLES ARE NOT OWNED, DEVELOPED OR SOLD BY THE RITZ-CARLTON HOTEL COMPANY, L.L.C. OR ITS AFFILIATES ("RITZ-CARLTON"). STOCK RESIDENCES USES THE RITZ-CARLTON MARKS UNDER LICENSE FROM THE RITZ-CARLTON HOTEL COMPANY, L.L.C. WHICH HAS NOT CONFIRMED THE ACCURACY OF ANY OF THE STATEMENTS OR REPRESENTATIONS MADE HEREIN.



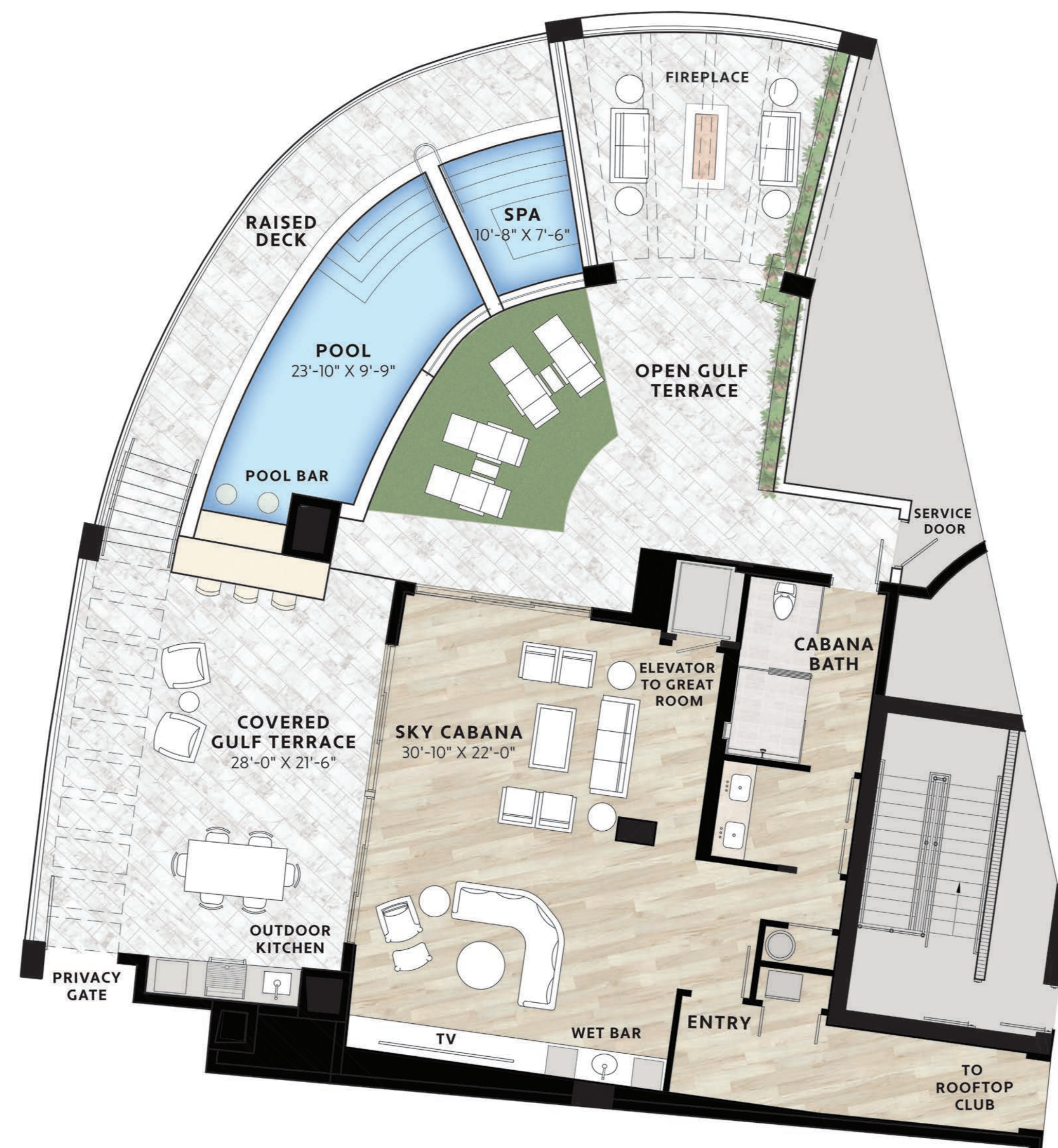
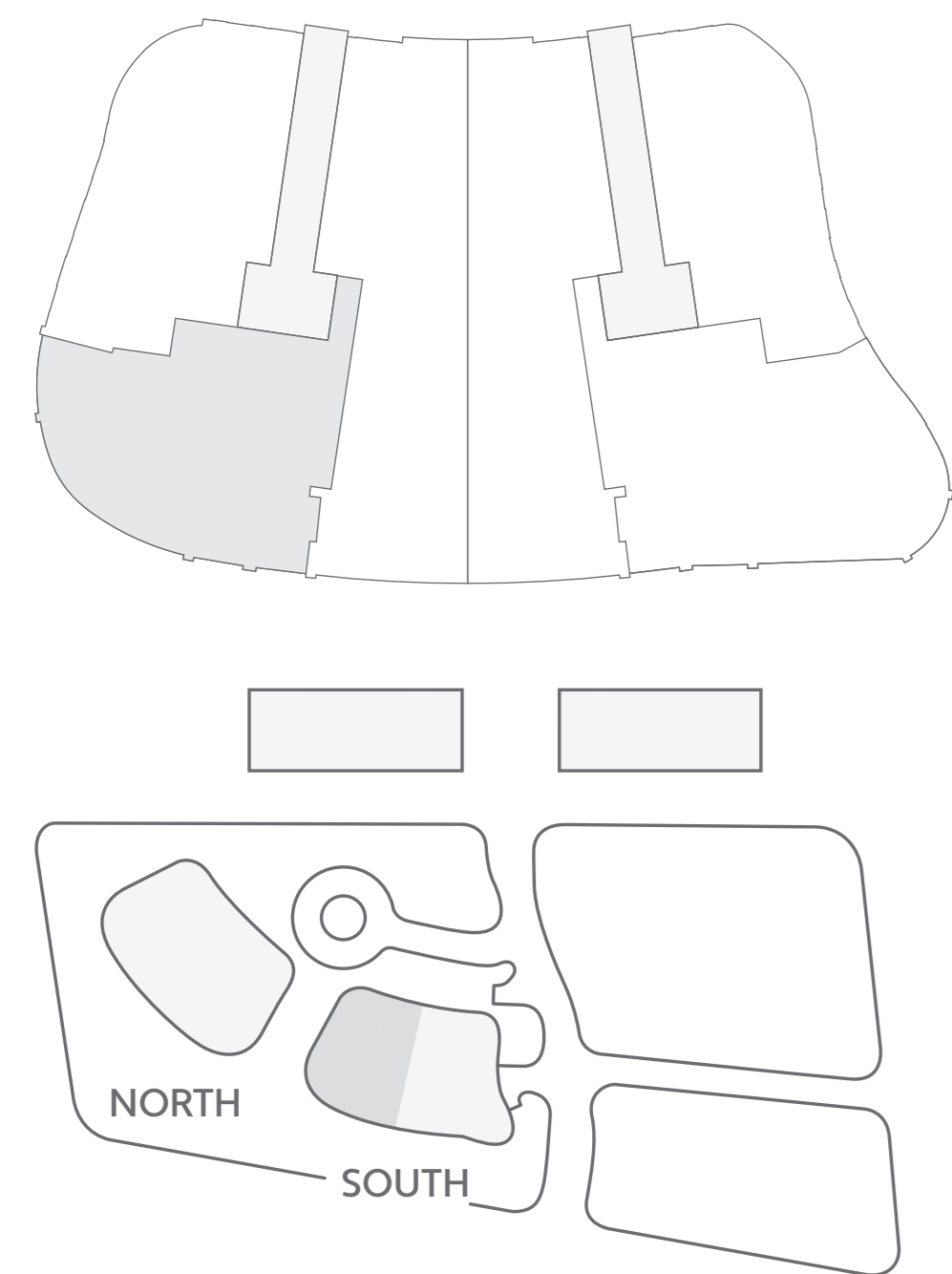
**THE RITZ-CARLTON
RESIDENCES**

NAPLES

TOWER RESIDENCES GRAND PENTHOUSE ROOFTOP SOUTH 02

Sky Cabana • Full Bath • Wet Bar • Private Elevator
Covered Terrace with Outdoor Kitchen
Open Terrace with Fireplace
Pool with Pool Bar • Spa
Entry to Rooftop Club

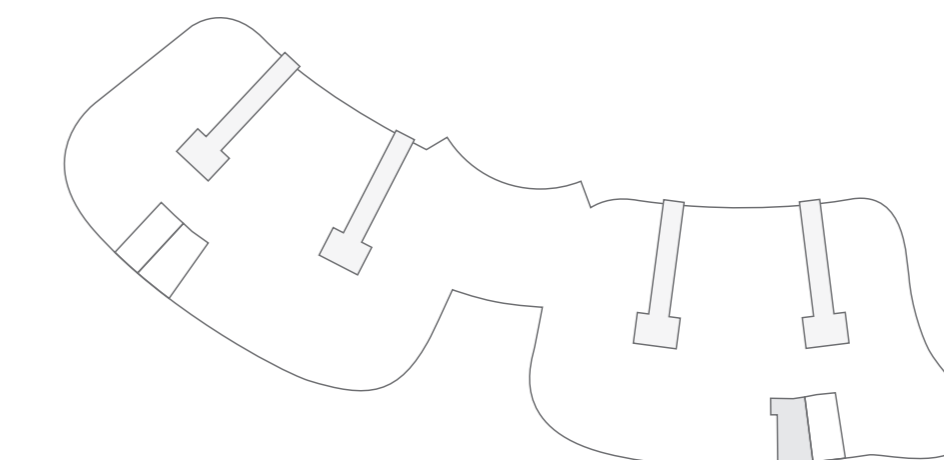
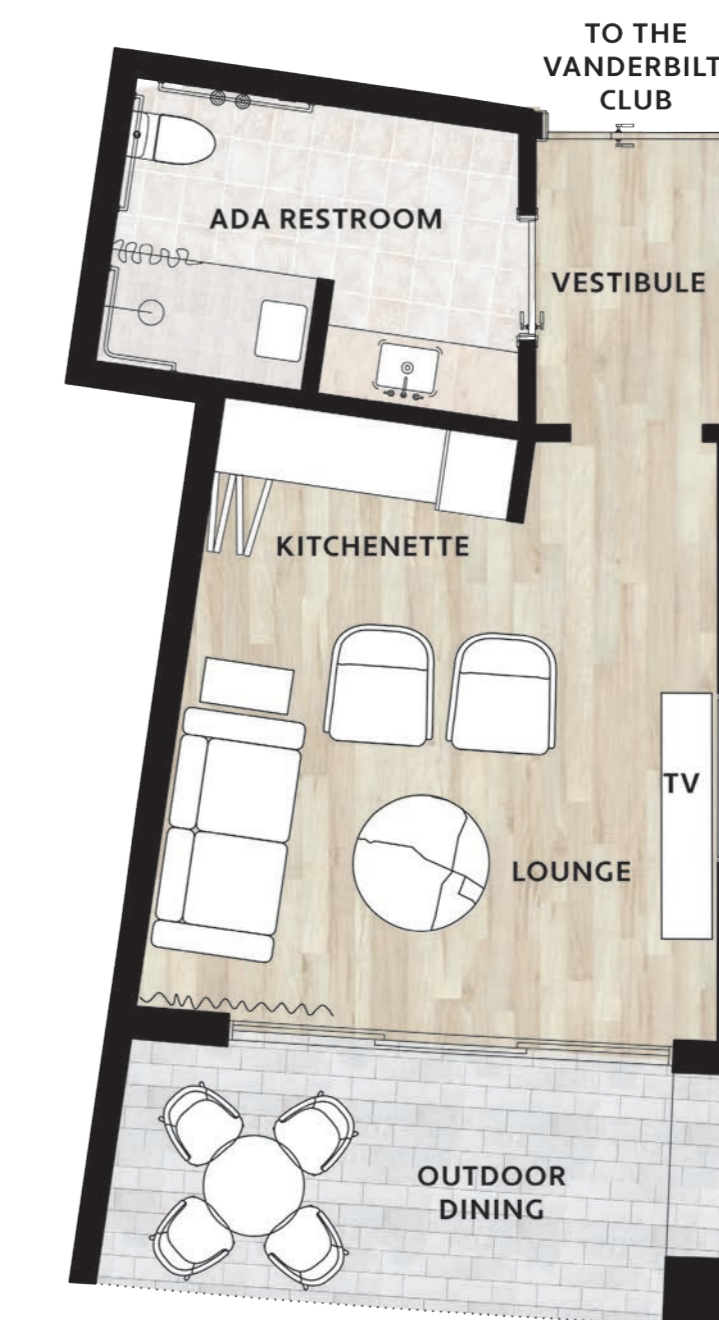
First Floor Living	8,783 sq.ft.
Sky Cabana	1,089 sq.ft.
Total Living Area	9,872 sq.ft.
First Floor Terraces	1,389 sq.ft.
Rooftop Terraces	1,849 sq.ft.
Rooftop Pool & Spa	300 sq.ft.
Total Residence	13,410 sq.ft.



PRIVATE CABANA 02 ON THIRD LEVEL AMENITY DECK

Lounge • Full Bath • Kitchenette
Outdoor Dining • Entry to The Vanderbilt Club

Living Area	353 sq.ft.
Outdoor Dining	98 sq.ft.
Total Cabana	451 sq.ft.



ORAL REPRESENTATIONS CANNOT BE RELIED UPON AS CORRECTLY STATING THE REPRESENTATIONS OF THE DEVELOPER. FOR CORRECT REPRESENTATIONS REFERENCE SHOULD BE MADE TO THE DOCUMENTS REQUIRED BY SECTION 718.503, FLORIDA STATUTES, TO BE FURNISHED BY A DEVELOPER TO A BUYER OR LESSEE. STATED LIVING AREA IS MEASURED TO THE EXTERIOR FACE OF EXTERIOR WALLS, WITHOUT EXCLUDING AREAS THAT MAY BE OCCUPIED BY COLUMNS OR OTHER STRUCTURAL COMPONENTS. THIS METHOD OF MEASUREMENT VARIES FROM, AND IS LARGER THAN, THE DIMENSIONS THAT WOULD BE DETERMINED BY USING THE DESCRIPTION AND THE DEFINITION OF THE UNIT SET FORTH IN THE DECLARATION (WHICH GENERALLY ONLY INCLUDES THE INTERIOR AIRSPACE BETWEEN THE PERIMETER WALLS AND EXCLUDES STRUCTURAL COMPONENTS). ALL DIMENSIONS ARE APPROXIMATE AND MAY VARY WITH ACTUAL CONSTRUCTION. MEASUREMENTS OF ROOMS/TERRACES SET FORTH ON THIS FLOOR PLAN ARE TAKEN AT THE GREATEST POINTS OF EACH ROOM/TERRACE (AS IF THE ROOM WERE A PERFECT RECTANGLE), WITHOUT REGARD FOR ANY CUTOUTS OR IRREGULARITIES. ACCORDINGLY, THE AREA OF THE ACTUAL ROOM WILL TYPICALLY BE SMALLER THAN THE PRODUCT OBTAINED BY MULTIPLYING THE STATED LENGTH TIMES WIDTH. ALL FLOOR PLANS AND DEVELOPMENT PLANS ARE SUBJECT TO CHANGE. THE DEVELOPER EXPRESSLY RESERVES THE RIGHT TO MAKE MODIFICATIONS, REVISIONS, AND CHANGES WITHOUT NOTICE. ALL DEPICTIONS OF FURNISHINGS, APPLIANCES, BUILT-INS, COUNTERS, SOFFITS, FLOOR COVERINGS, LIGHTING, LANDSCAPING AND OTHER MATTERS OF DETAIL, INCLUDING, WITHOUT LIMITATION, ITEMS OF FINISH AND DECORATION, ARE CONCEPTUAL ONLY AND ARE NOT NECESSARILY INCLUDED IN EACH UNIT. CONSULT YOUR PROSPECTUS AND PURCHASE AGREEMENT. THE RITZ-CARLTON RESIDENCES, NAPLES ARE NOT OWNED, DEVELOPED OR SOLD BY THE RITZ-CARLTON HOTEL COMPANY, L.L.C. OR ITS AFFILIATES ("RITZ-CARLTON"). STOCK RESIDENCES USES THE RITZ-CARLTON MARKS UNDER LICENSE FROM THE RITZ-CARLTON HOTEL COMPANY, L.L.C. WHICH HAS NOT CONFIRMED THE ACCURACY OF ANY OF THE STATEMENTS OR REPRESENTATIONS MADE HEREIN.



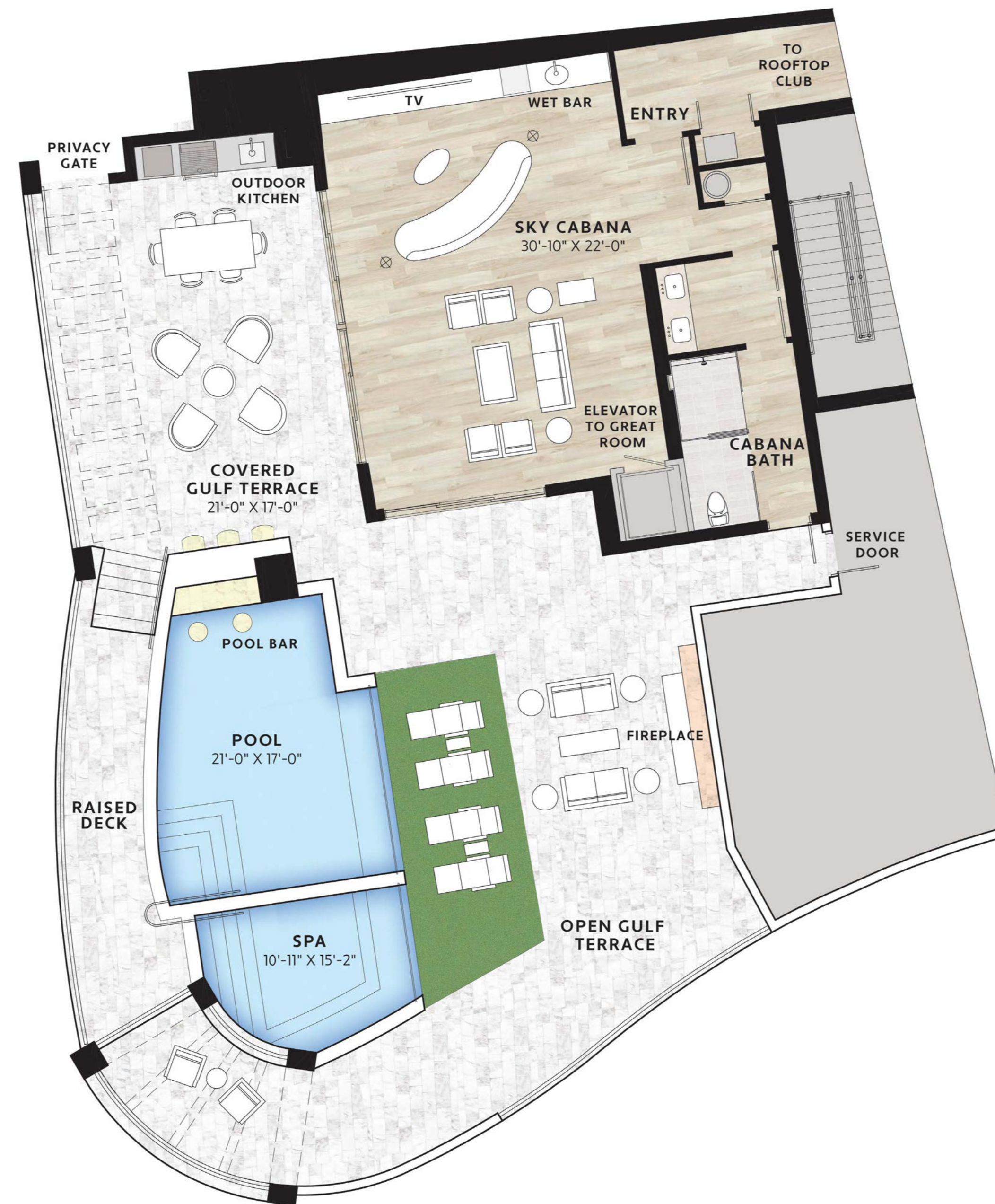
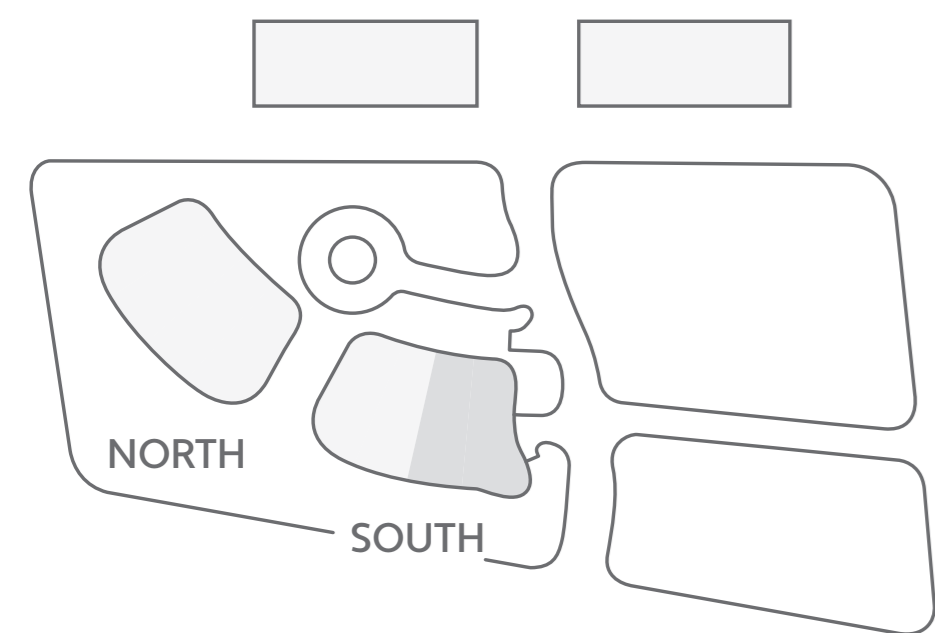
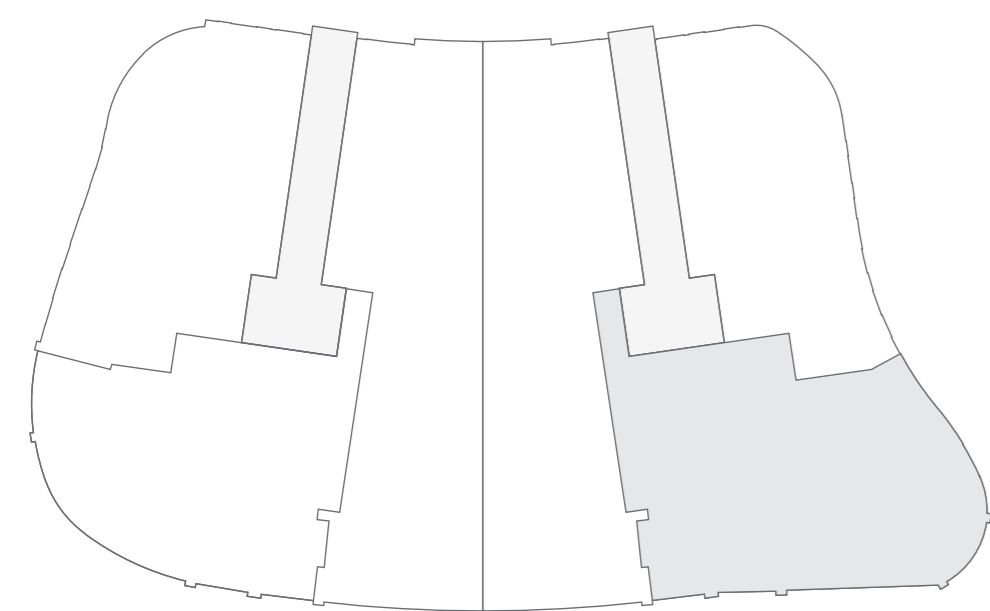
THE RITZ-CARLTON RESIDENCES

NAPLES

TOWER RESIDENCES GRAND PENTHOUSE ROOFTOP SOUTH 01

Sky Cabana • Full Bath • Wet Bar • Private Elevator
Covered Terrace with Outdoor Kitchen
Open Terrace with Fireplace
Pool with Pool Bar • Spa
Entry to Rooftop Club

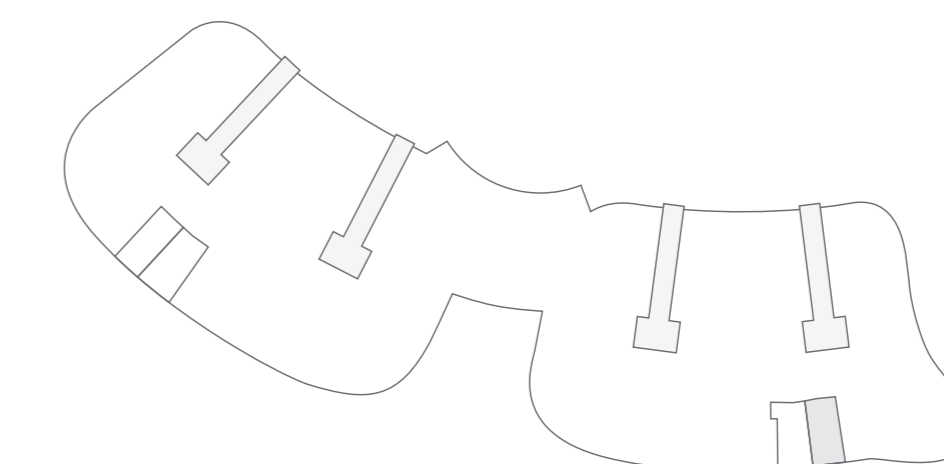
First Floor Living	9,008 sq.ft.
Sky Cabana	1,112 sq.ft.
Total Living Area	10,120 sq.ft.
First Floor Terraces	1,405 sq.ft.
Rooftop Terraces	2,299 sq.ft.
Rooftop Pool & Spa	474 sq.ft.
Total Residence	14,298 sq.ft.



PRIVATE CABANA 01 ON THIRD LEVEL AMENITY DECK

Lounge • Full Bath • Kitchenette
Outdoor Dining • Entry to The Vanderbilt Club

Living Area	330 sq.ft.
Outdoor Dining	90 sq.ft.
Total Cabana	420 sq.ft.



ORAL REPRESENTATIONS CANNOT BE RELIED UPON AS CORRECTLY STATING THE REPRESENTATIONS OF THE DEVELOPER. FOR CORRECT REPRESENTATIONS REFERENCE SHOULD BE MADE TO THE DOCUMENTS REQUIRED BY SECTION 718.503, FLORIDA STATUTES, TO BE FURNISHED BY A DEVELOPER TO A BUYER OR LESSEE. STATED LIVING AREA IS MEASURED TO THE EXTERIOR FACE OF EXTERIOR WALLS, WITHOUT EXCLUDING AREAS THAT MAY BE OCCUPIED BY COLUMNS OR OTHER STRUCTURAL COMPONENTS. THIS METHOD OF MEASUREMENT VARIES FROM, AND IS LARGER THAN, THE DIMENSIONS THAT WOULD BE DETERMINED BY USING THE DESCRIPTION AND THE DEFINITION OF THE UNIT SET FORTH IN THE DECLARATION (WHICH GENERALLY ONLY INCLUDES THE INTERIOR AIRSPACE BETWEEN THE PERIMETER WALLS AND EXCLUDES STRUCTURAL COMPONENTS). ALL DIMENSIONS ARE APPROXIMATE AND MAY VARY WITH ACTUAL CONSTRUCTION. MEASUREMENTS OF ROOMS/TERRACES SET FORTH ON THIS FLOOR PLAN ARE TAKEN AT THE GREATEST POINTS OF EACH ROOM/TERRACE (AS IF THE ROOM WERE A PERFECT RECTANGLE), WITHOUT REGARD FOR ANY CUTOUTS OR IRREGULARITIES. ACCORDINGLY, THE AREA OF THE ACTUAL ROOM WILL TYPICALLY BE SMALLER THAN THE PRODUCT OBTAINED BY MULTIPLYING THE STATED LENGTH TIMES WIDTH. ALL FLOOR PLANS AND DEVELOPMENT PLANS ARE SUBJECT TO CHANGE. THE DEVELOPER EXPRESSLY RESERVES THE RIGHT TO MAKE MODIFICATIONS, REVISIONS, AND CHANGES WITHOUT NOTICE. ALL DEPICTIONS OF FURNISHINGS, APPLIANCES, BUILT-INS, COUNTERS, SOFFITS, FLOOR COVERINGS, LIGHTING, LANDSCAPING AND OTHER MATTERS OF DETAIL, INCLUDING, WITHOUT LIMITATION, ITEMS OF FINISH AND DECORATION, ARE CONCEPTUAL ONLY AND ARE NOT NECESSARILY INCLUDED IN EACH UNIT. CONSULT YOUR PROSPECTUS AND PURCHASE AGREEMENT. THE RITZ-CARLTON RESIDENCES, NAPLES ARE NOT OWNED, DEVELOPED OR SOLD BY THE RITZ-CARLTON HOTEL COMPANY, L.L.C. OR ITS AFFILIATES ("RITZ-CARLTON"). STOCK RESIDENCES USES THE RITZ-CARLTON MARKS UNDER LICENSE FROM THE RITZ-CARLTON HOTEL COMPANY, L.L.C. WHICH HAS NOT CONFIRMED THE ACCURACY OF ANY OF THE STATEMENTS OR REPRESENTATIONS MADE HEREIN.

