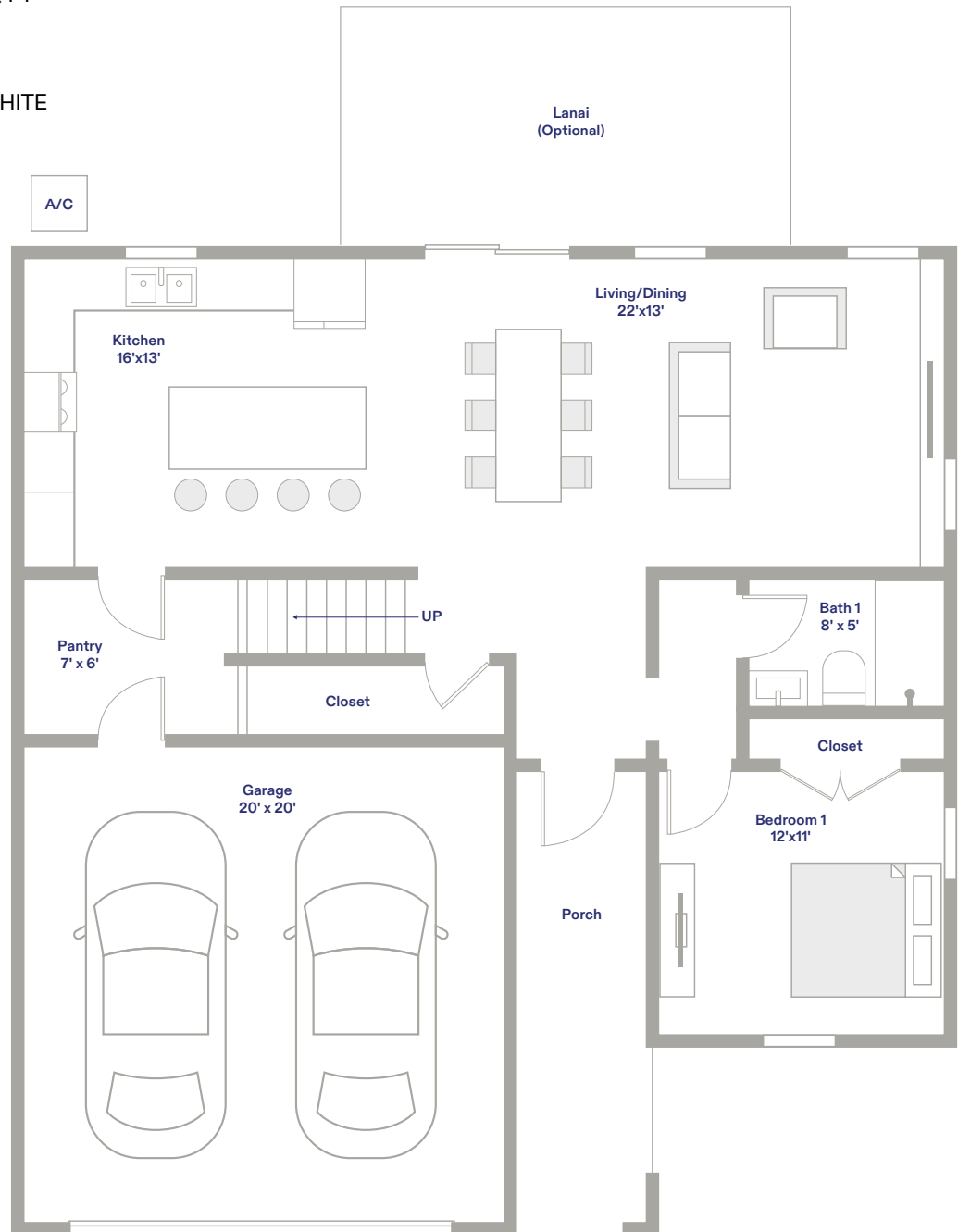


CORE S4 2178 FLOOR PLAN

SINGLE FAMILY HOME

FIRST FLOOR

STORY: 2
TOTAL AREA: 2,824 SQ FT
TOTAL A/C AREA: 2,178 SQ FT
BEDROOMS: 4
BATHS: 3
GARAGE: 2
SCHEME: TAUPE, GREY, WHITE



Features, amenities, floorplans elevations, square footage and design may vary per plan and community and are subject to changes or substitution without notice. The developer reserves the right to substitute equipment, materials, appliances and brand names with items equal or higher in their sole opinion value, color and size variations may occur. Home prices, included features, available locations are subject to change without notice. Please refer to the actual home purchase agreement for additional information, disclosure and disclaimers relating to the home and its features. Void where prohibited by law. Proposed amenities for the community are subject to changes, substitutions, and/or deletions without notice. The developer makes no representation or guarantee that the community or any amenities will be built out as currently planned.



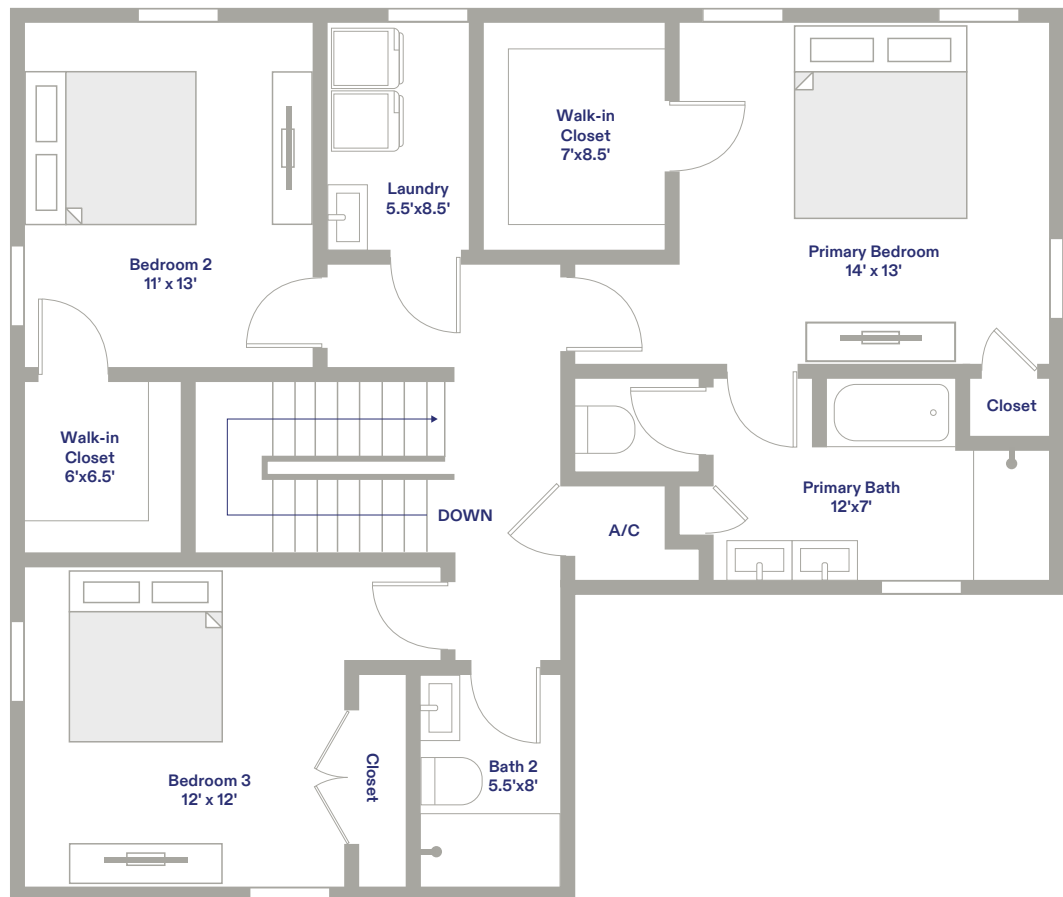
CORE S4 2178

FLOOR PLAN

SINGLE FAMILY HOME

SECOND FLOOR

STORY: 2
TOTAL AREA: 2,824 SQ FT
TOTAL A/C AREA: 2,178 SQ FT
BEDROOMS: 4
BATHS: 3
GARAGE: 2
SCHEME: TAUPE, GREY, WHITE



Features, amenities, floorplans elevations, square footage and design may vary per plan and community and are subject to changes or substitution without notice. The developer reserves the right to substitute equipment, materials, appliances and brand names with items equal or higher in their sole opinion value, color and size variations may occur. Home prices, included features, available locations are subject to change without notice. Please refer to the actual home purchase agreement for additional information, disclosure and disclaimers relating to the home and its features. Void where prohibited by law. Proposed amenities for the community are subject to changes, substitutions, and/or deletions without notice. The developer makes no representation or guarantee that the community or any amenities will be built out as currently planned.

