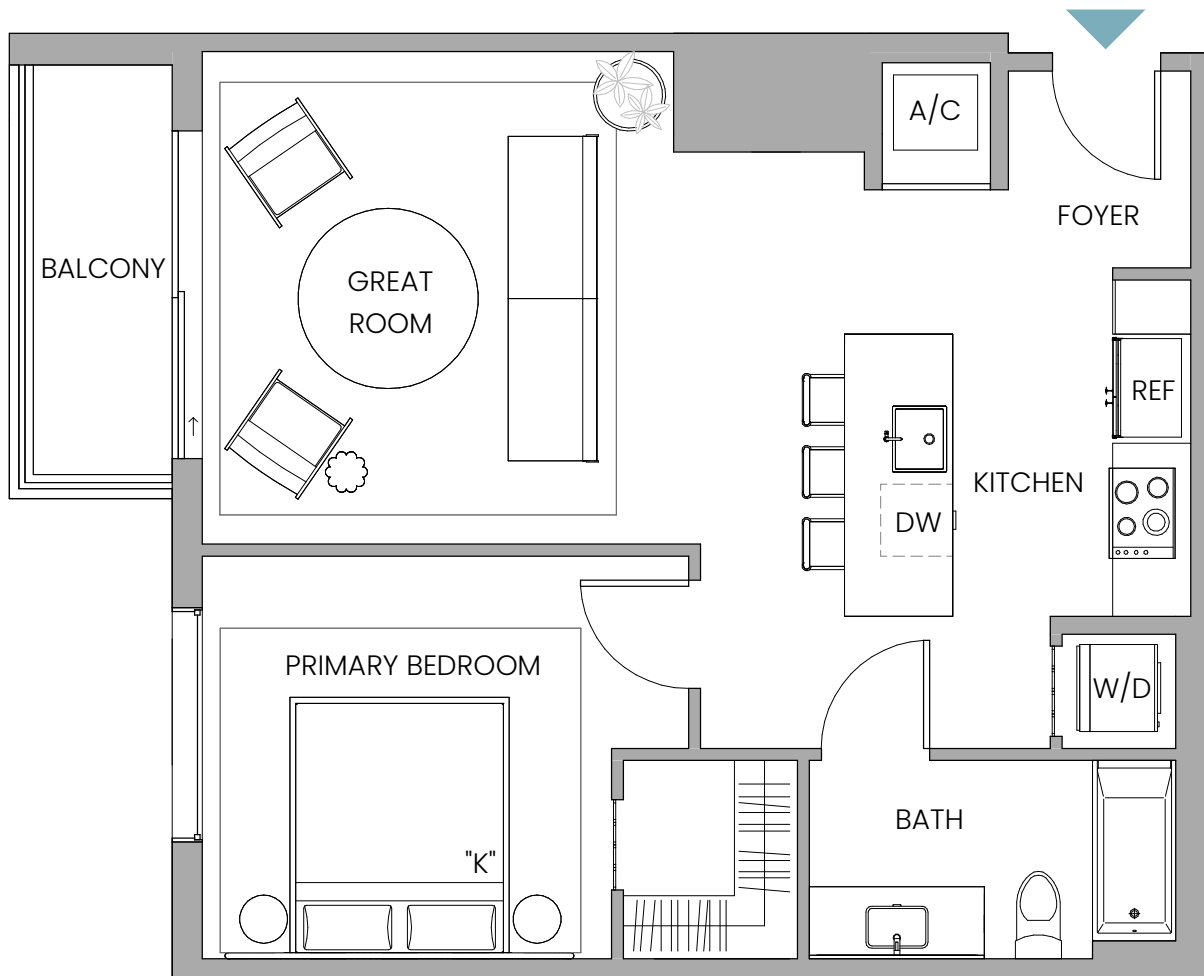


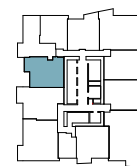
# UNIT WA1

## Line 06

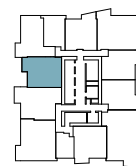
1 Bedroom | 1 Bathroom  
INTERIOR 734 SQ FT / 68 SQ M  
EXTERIOR 54 SQ FT / 5 SQ M  
TOTAL 788 SQ FT / 73 SQ M



FLOORS 11-15



FLOORS 16-41



Stated dimensions are measured to the exterior boundaries of the exterior walls and the centerline of interior demising walls and in fact vary from the dimensions that would be determined by using the description and definition of the "Unit" set forth in the Declaration (which generally only includes the interior airspace between the perimeter walls and includes interior structural components). For your reference, the area of the Unit, determined in accordance with those defined unit boundaries, is 734 sq ft / 68 sq m. Note that measurements of rooms set forth on this floor plan are generally taken at the greatest points of each given room (as if the room were a perfect rectangle), without regard for any cutouts. Accordingly, the area of the actual room will typically be smaller than the product obtained by multiplying the stated length times width. All dimensions are approximate and may vary with actual construction, and all floor plans and development plans are subject to change.

# UNIT WA2

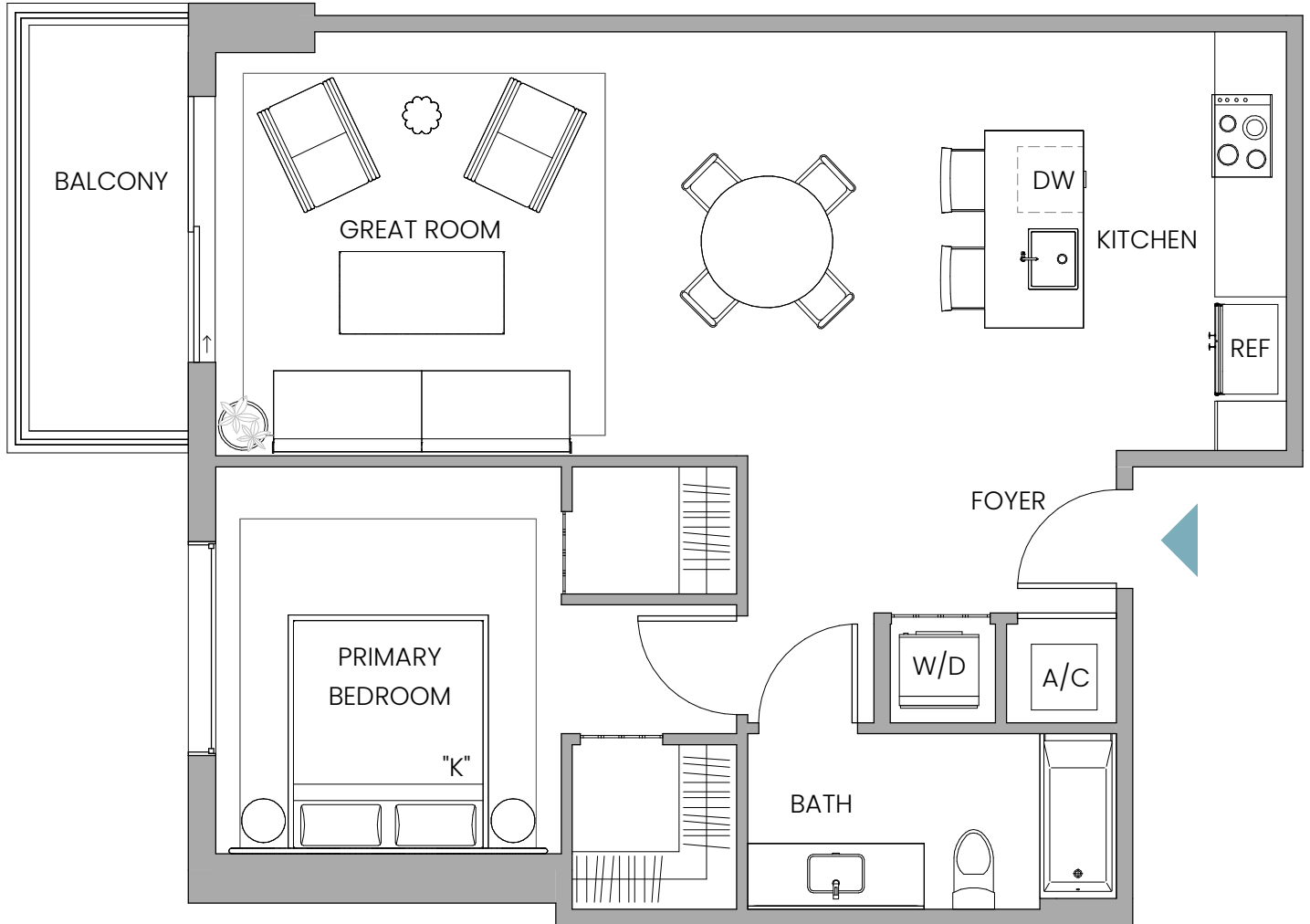
## Line 07

1 Bedroom | 1 Bathroom

INTERIOR 844 SQ FT / 78 SQ M

EXTERIOR 75 SQ FT / 7 SQ M

TOTAL 919 SQ FT / 85 SQ M



FLOORS 11-15

FLOORS 16-41



Stated dimensions are measured to the exterior boundaries of the exterior walls and the centerline of interior demising walls and in fact vary from the dimensions that would be determined by using the description and definition of the "Unit" set forth in the Declaration (which generally only includes the interior airspace between the perimeter walls and includes interior structural components). For your reference, the area of the Unit, determined in accordance with those defined unit boundaries, is 844 sq ft / 78 sq m. Note that measurements of rooms set forth on this floor plan are generally taken at the greatest points of each given room (as if the room were a perfect rectangle), without regard for any cutouts. Accordingly, the area of the actual room will typically be smaller than the product obtained by multiplying the stated length times width. All dimensions are approximate and may vary with actual construction, and all floor plans and development plans are subject to change.

# UNIT WA3

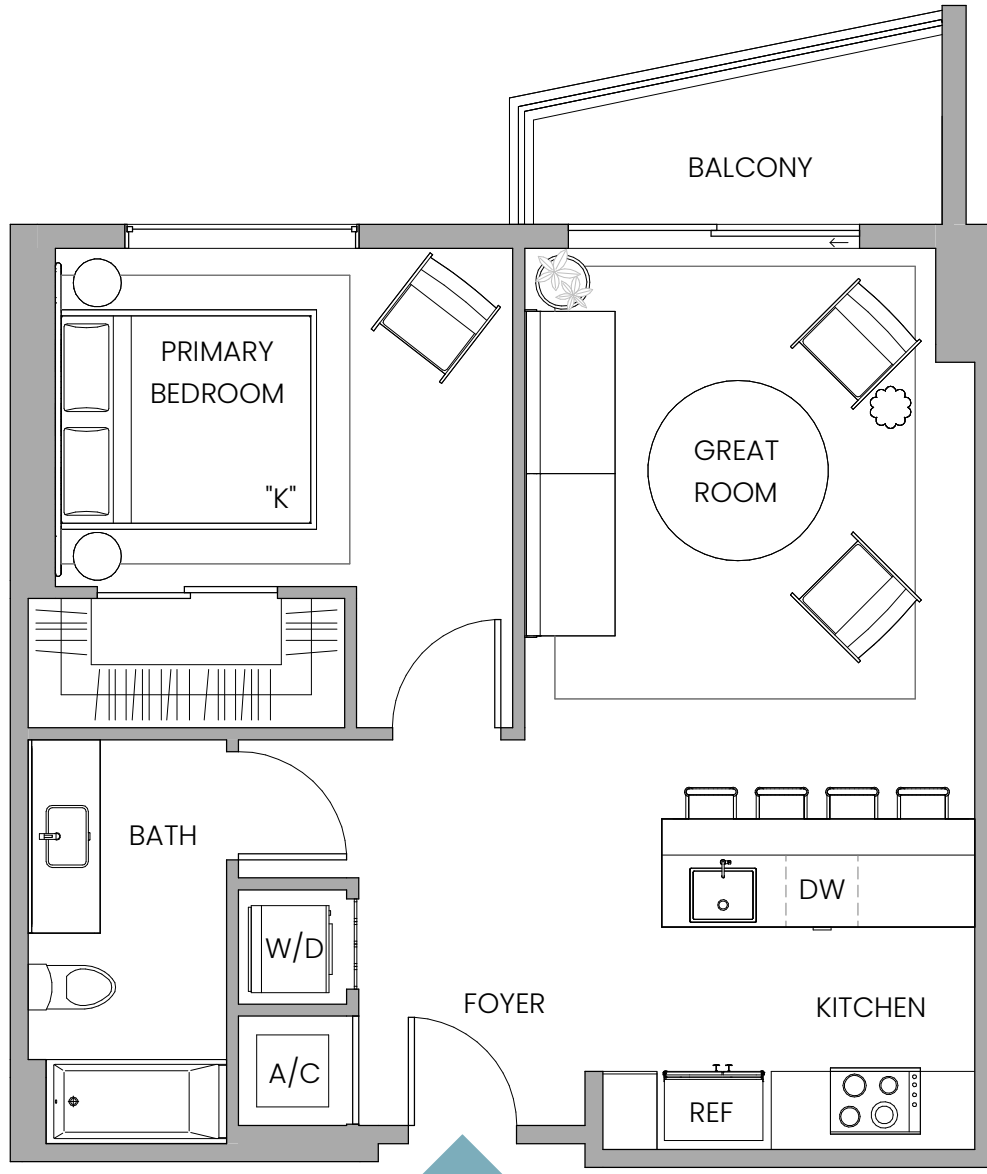
## Line 03

1 Bedroom | 1 Bathroom

INTERIOR 686 SQ FT / 64 SQ M

EXTERIOR 59 SQ FT / 5 SQ M

TOTAL 745 SQ FT / 69 SQ M



FLOORS 11-15

FLOORS 16-41



Stated dimensions are measured to the exterior boundaries of the exterior walls and the centerline of interior demising walls and in fact vary from the dimensions that would be determined by using the description and definition of the "Unit" set forth in the Declaration (which generally only includes the interior airspace between the perimeter walls and includes interior structural components). For your reference, the area of the Unit, determined in accordance with those defined unit boundaries, is 686 sq ft / 64 sq m. Note that measurements of rooms set forth on this floor plan are generally taken at the greatest points of each given room (as if the room were a perfect rectangle), without regard for any cutouts. Accordingly, the area of the actual room will typically be smaller than the product obtained by multiplying the stated length times width. All dimensions are approximate and may vary with actual construction, and all floor plans and development plans are subject to change.

# UNIT WA6

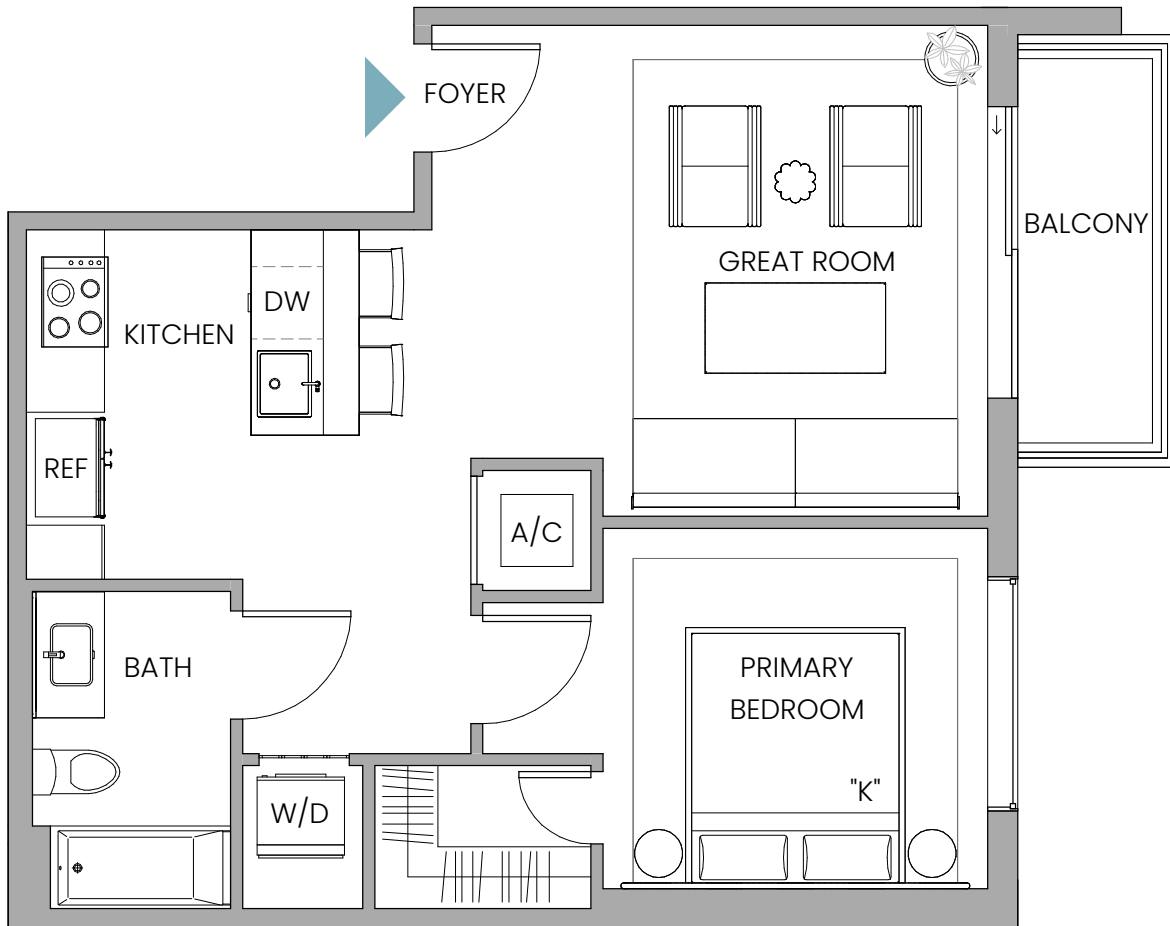
## Line 01

1 Bedroom | 1 Bathroom

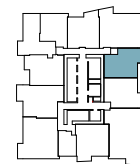
INTERIOR 641 SQ FT / 60 SQ M

EXTERIOR 53 SQ FT / 5 SQ M

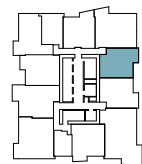
TOTAL 694 SQ FT / 65 SQ M



FLOORS 11-15



FLOORS 16-41



Stated dimensions are measured to the exterior boundaries of the exterior walls and the centerline of interior demising walls and in fact vary from the dimensions that would be determined by using the description and definition of the "Unit" set forth in the Declaration (which generally only includes the interior airspace between the perimeter walls and includes interior structural components). For your reference, the area of the Unit, determined in accordance with those defined unit boundaries, is 641 sq ft / 60 sq m. Note that measurements of rooms set forth on this floor plan are generally taken at the greatest points of each given room (as if the room were a perfect rectangle), without regard for any cutouts. Accordingly, the area of the actual room will typically be smaller than the product obtained by multiplying the stated length times width. All dimensions are approximate and may vary with actual construction, and all floor plans and development plans are subject to change.

# UNIT WA7

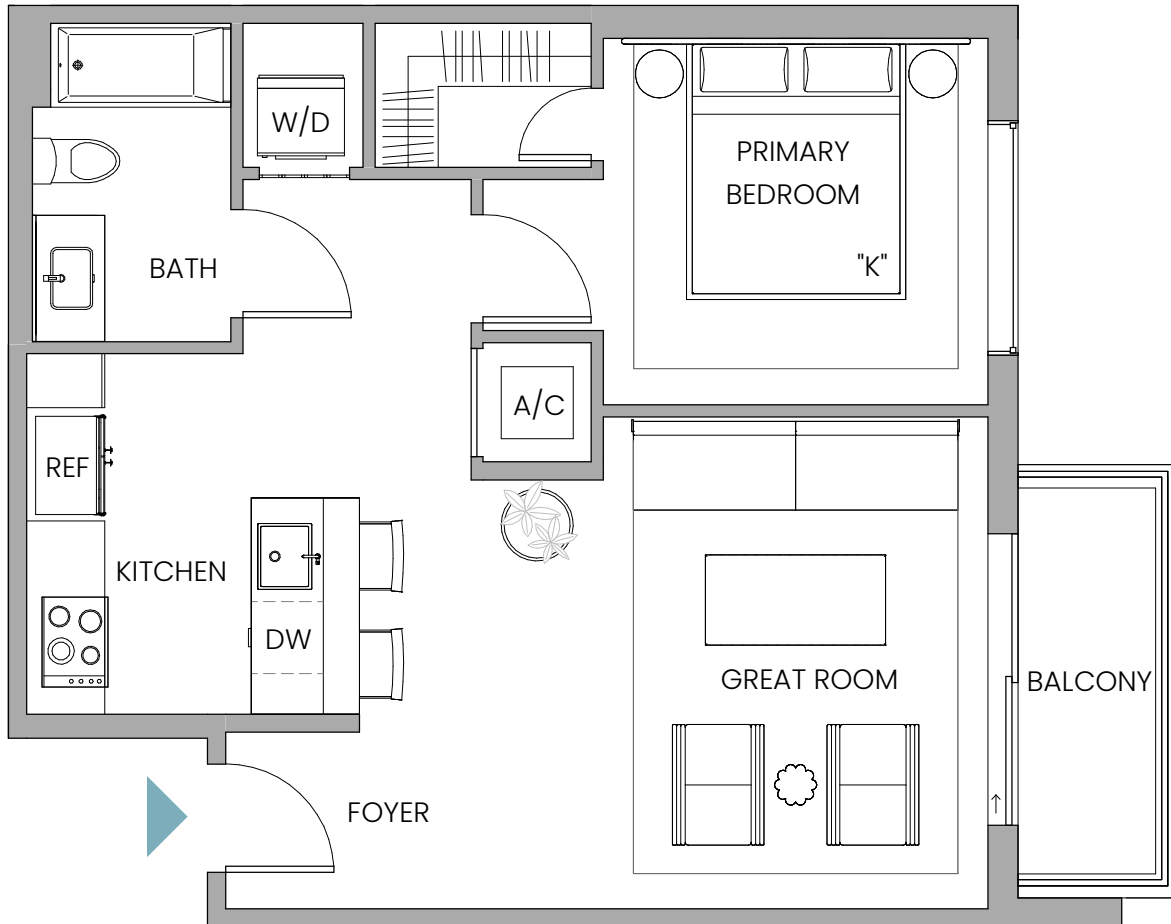
## Line 12

1 Bedroom | 1 Bathroom

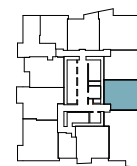
INTERIOR 659 SQ FT / 61 SQ M

EXTERIOR 54 SQ FT / 5 SQ M

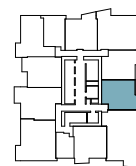
TOTAL 713 SQ FT / 66 SQ M



FLOORS 11-15



FLOORS 16-41



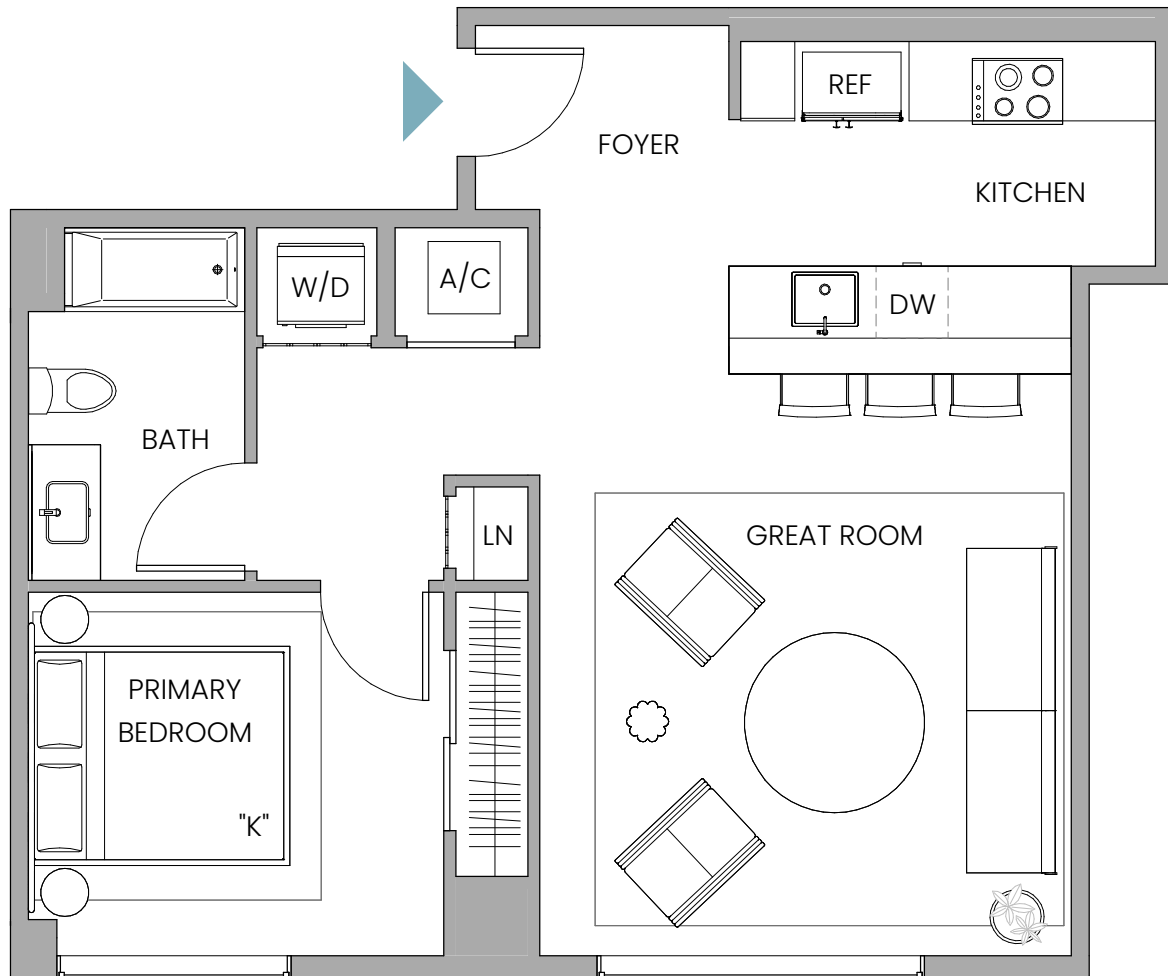
Stated dimensions are measured to the exterior boundaries of the exterior walls and the centerline of interior demising walls and in fact vary from the dimensions that would be determined by using the description and definition of the "Unit" set forth in the Declaration (which generally only includes the interior airspace between the perimeter walls and includes interior structural components). For your reference, the area of the Unit, determined in accordance with those defined unit boundaries, is 659 sq ft / 61 sq m. Note that measurements of rooms set forth on this floor plan are generally taken at the greatest points of each given room (as if the room were a perfect rectangle), without regard for any cutouts. Accordingly, the area of the actual room will typically be smaller than the product obtained by multiplying the stated length times width. All dimensions are approximate and may vary with actual construction, and all floor plans and development plans are subject to change.

# UNIT WA8

## Line 11

1 Bedroom | 1 Bathroom

INTERIOR 740 SQ FT / 69 SQ FT



FLOORS 03-05



Stated dimensions are measured to the exterior boundaries of the exterior walls and the centerline of interior demising walls and in fact vary from the dimensions that would be determined by using the description and definition of the "Unit" set forth in the Declaration (which generally only includes the interior airspace between the perimeter walls and includes interior structural components). For your reference, the area of the Unit, determined in accordance with those defined unit boundaries, is 740 sq ft / 69 sq m. Note that measurements of rooms set forth on this floor plan are generally taken at the greatest points of each given room (as if the room were a perfect rectangle), without regard for any cutouts. Accordingly, the area of the actual room will typically be smaller than the product obtained by multiplying the stated length times width. All dimensions are approximate and may vary with actual construction, and all floor plans and development plans are subject to change.

# UNIT WA9

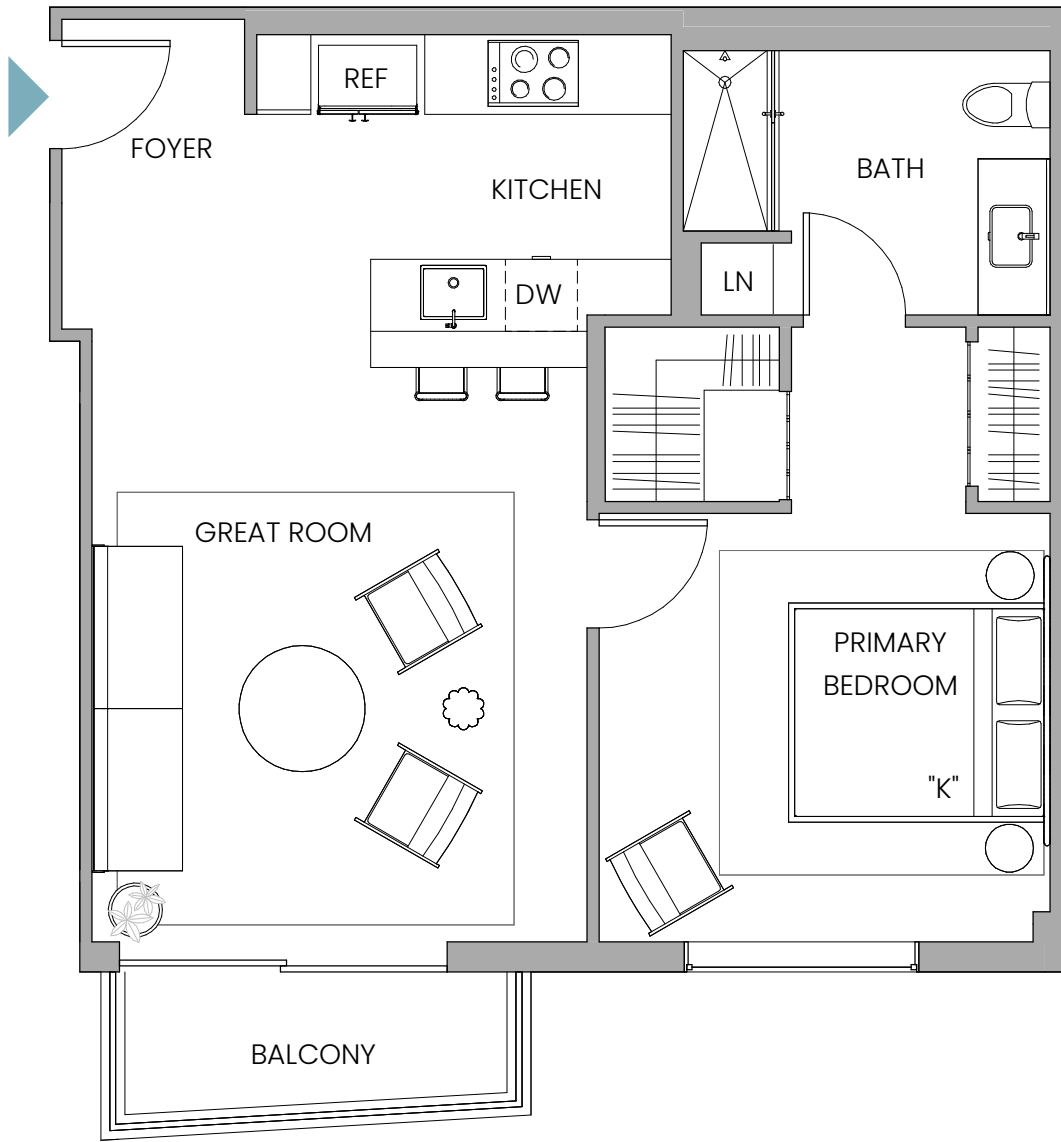
## Line 10

1 Bedroom | 1 Bathroom

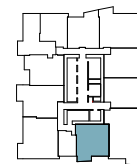
INTERIOR 716 SQ FT / 67 SQ M

EXTERIOR 52 SQ FT / 5 SQ M

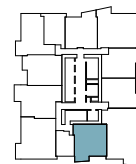
TOTAL 800 SQ FT / 75 SQ M



FLOORS 11-15



FLOORS 16-41



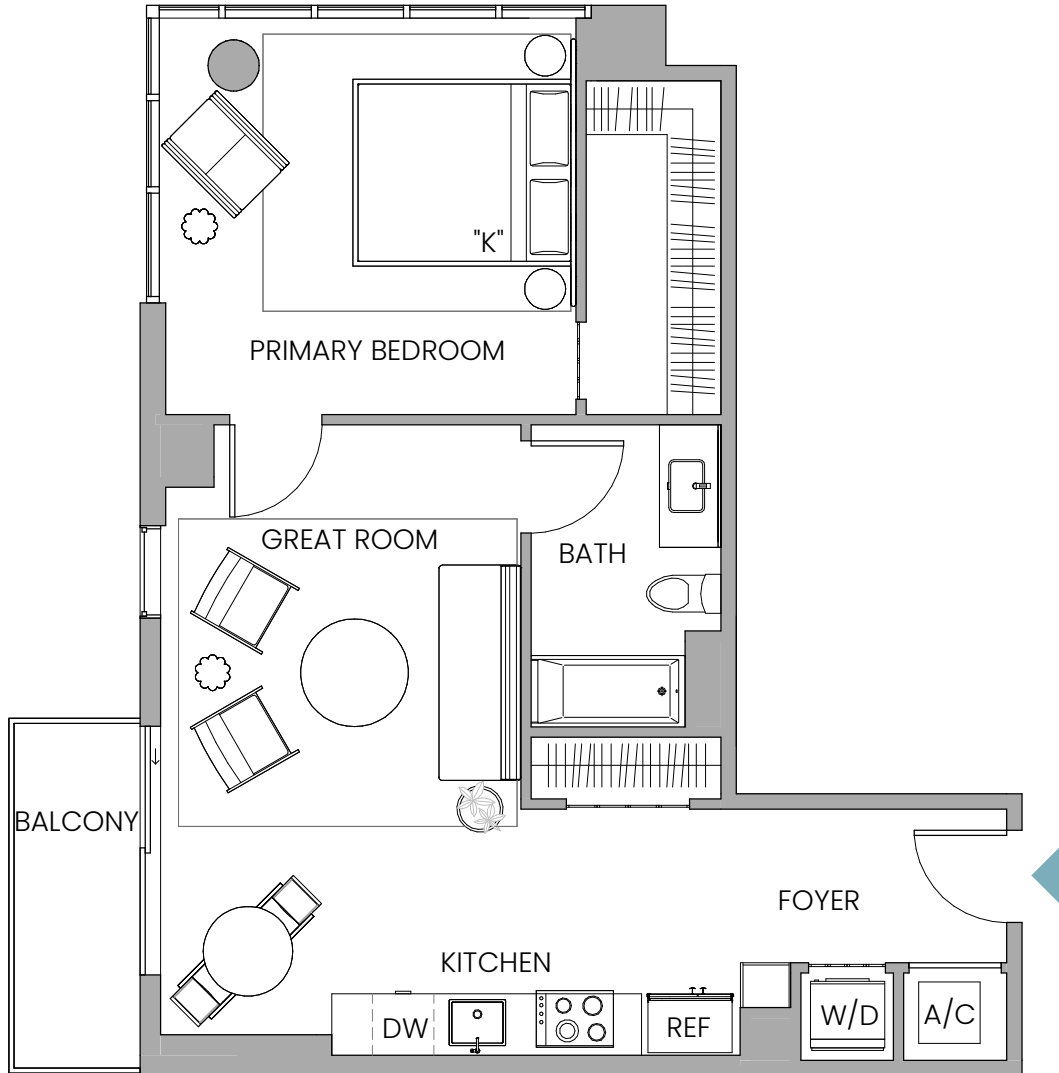
Stated dimensions are measured to the exterior boundaries of the exterior walls and the centerline of interior demising walls and in fact vary from the dimensions that would be determined by using the description and definition of the "Unit" set forth in the Declaration (which generally only includes the interior airspace between the perimeter walls and includes interior structural components). For your reference, the area of the Unit, determined in accordance with those defined unit boundaries, is 749 sq ft / 70 sq m. Note that measurements of rooms set forth on this floor plan are generally taken at the greatest points of each given room (as if the room were a perfect rectangle), without regard for any cutouts. Accordingly, the area of the actual room will typically be smaller than the product obtained by multiplying the stated length times width. All dimensions are approximate and may vary with actual construction, and all floor plans and development plans are subject to change.

# UNIT WA10

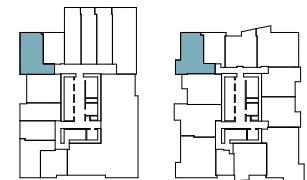


Line 06, Floors 02  
Line 05, Floors 16-41

1 Bedroom | 1 Bathroom  
INTERIOR 722 SQ FT / 67 SQ M  
EXTERIOR 54 SQ FT / 5 SQ M  
TOTAL 776 SQ FT / 72 SQ M



FLOORS 02      FLOORS 16-41



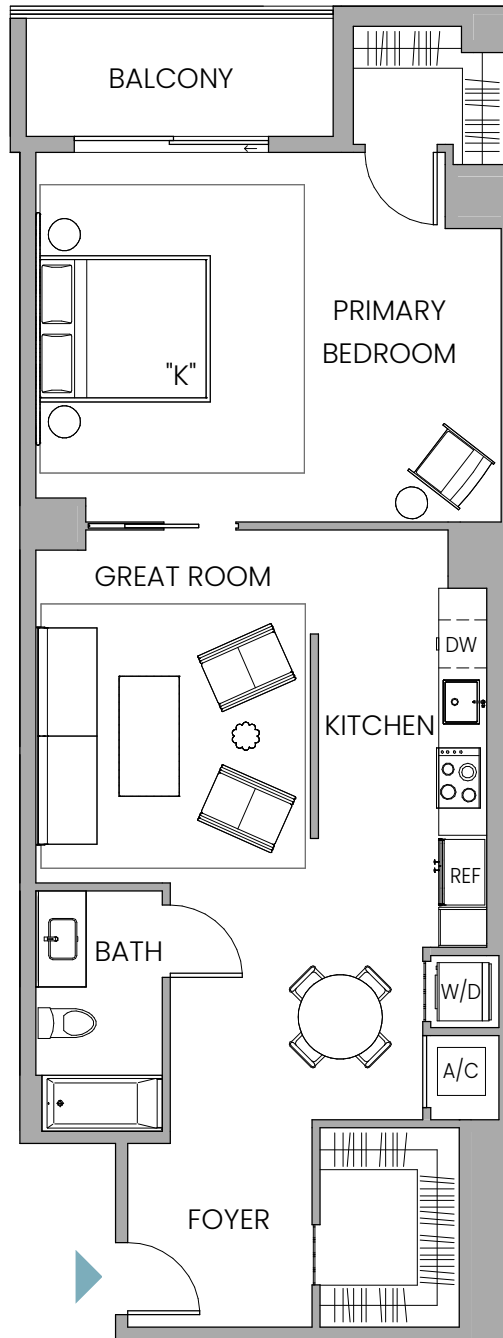
**Note**  
No Balcony on Floor 02

Stated dimensions are measured to the exterior boundaries of the exterior walls and the centerline of interior demising walls and in fact vary from the dimensions that would be determined by using the description and definition of the "Unit" set forth in the Declaration (which generally only includes the interior airspace between the perimeter walls and includes interior structural components). For your reference, the area of the Unit, determined in accordance with those defined unit boundaries, is 722 sq ft / 67 sq m. Note that measurements of rooms set forth on this floor plan are generally taken at the greatest points of each given room (as if the room were a perfect rectangle), without regard for any cutouts. Accordingly, the area of the actual room will typically be smaller than the product obtained by multiplying the stated length times width. All dimensions are approximate and may vary with actual construction, and all floor plans and development plans are subject to change.

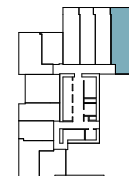
# UNIT WA14

## Line 01

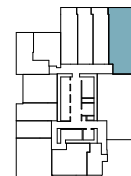
1 Bedroom | 1 Bathroom  
INTERIOR 1005 SQ FT / 93 SQ M  
EXTERIOR 71 SQ FT / 7 SQ M  
TOTAL 1076 SQ FT / 100 SQ M



FLOORS 02



FLOORS 03-05



Stated dimensions are measured to the exterior boundaries of the exterior walls and the centerline of interior demising walls and in fact vary from the dimensions that would be determined by using the description and definition of the "Unit" set forth in the Declaration (which generally only includes the interior airspace between the perimeter walls and includes interior structural components). For your reference, the area of the Unit, determined in accordance with those defined unit boundaries, is 1005 sq ft / 93 sq m. Note that measurements of rooms set forth on this floor plan are generally taken at the greatest points of each given room (as if the room were a perfect rectangle), without regard for any cutouts. Accordingly, the area of the actual room will typically be smaller than the product obtained by multiplying the stated length times width. All dimensions are approximate and may vary with actual construction, and all floor plans and development plans are subject to change.

# UNIT WA22

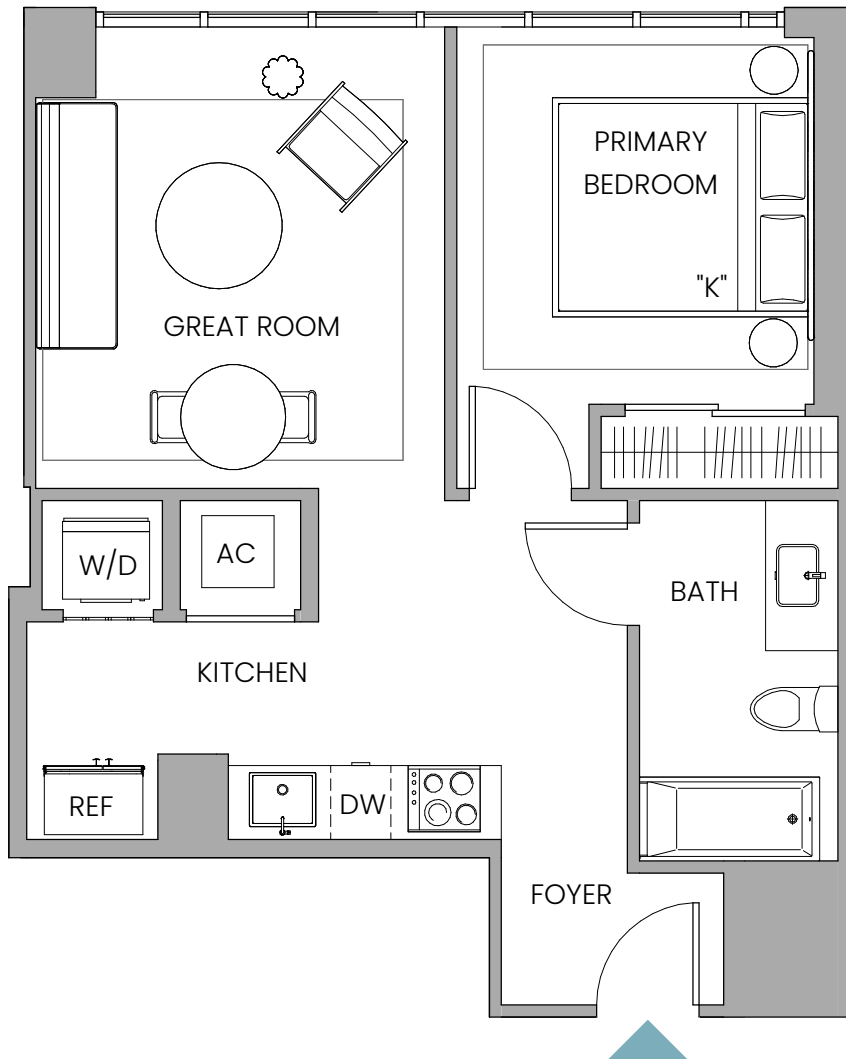
Line 05, Floors 03-05

Line 05, Floors 06-09

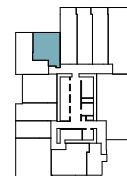
Line 04, Floors 11-15

1 Bedroom | 1 Bathroom

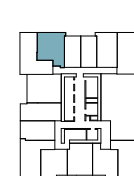
INTERIOR 567 SF / 53 SM



FLOORS 03-05



FLOORS 06-09



FLOORS 11-15



Stated dimensions are measured to the exterior boundaries of the exterior walls and the centerline of interior demising walls and in fact vary from the dimensions that would be determined by using the description and definition of the "Unit" set forth in the Declaration (which generally only includes the interior airspace between the perimeter walls and includes interior structural components). For your reference, the area of the Unit, determined in accordance with those defined unit boundaries, is 567 sq ft / 53 sq m. Note that measurements of rooms set forth on this floor plan are generally taken at the greatest points of each given room (as if the room were a perfect rectangle), without regard for any cutouts. Accordingly, the area of the actual room will typically be smaller than the product obtained by multiplying the stated length times width. All dimensions are approximate and may vary with actual construction, and all floor plans and development plans are subject to change.

# UNIT WA23

Line 06, Floors 03-05

Line 06, Floors 06-09

Line 05, Floors 11-15

1 Bedroom | 1 Bathroom

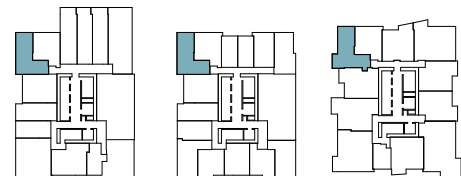
INTERIOR 647 SF / 60 SM



FLOORS 03-05

FLOORS 06-09

FLOORS 11-15



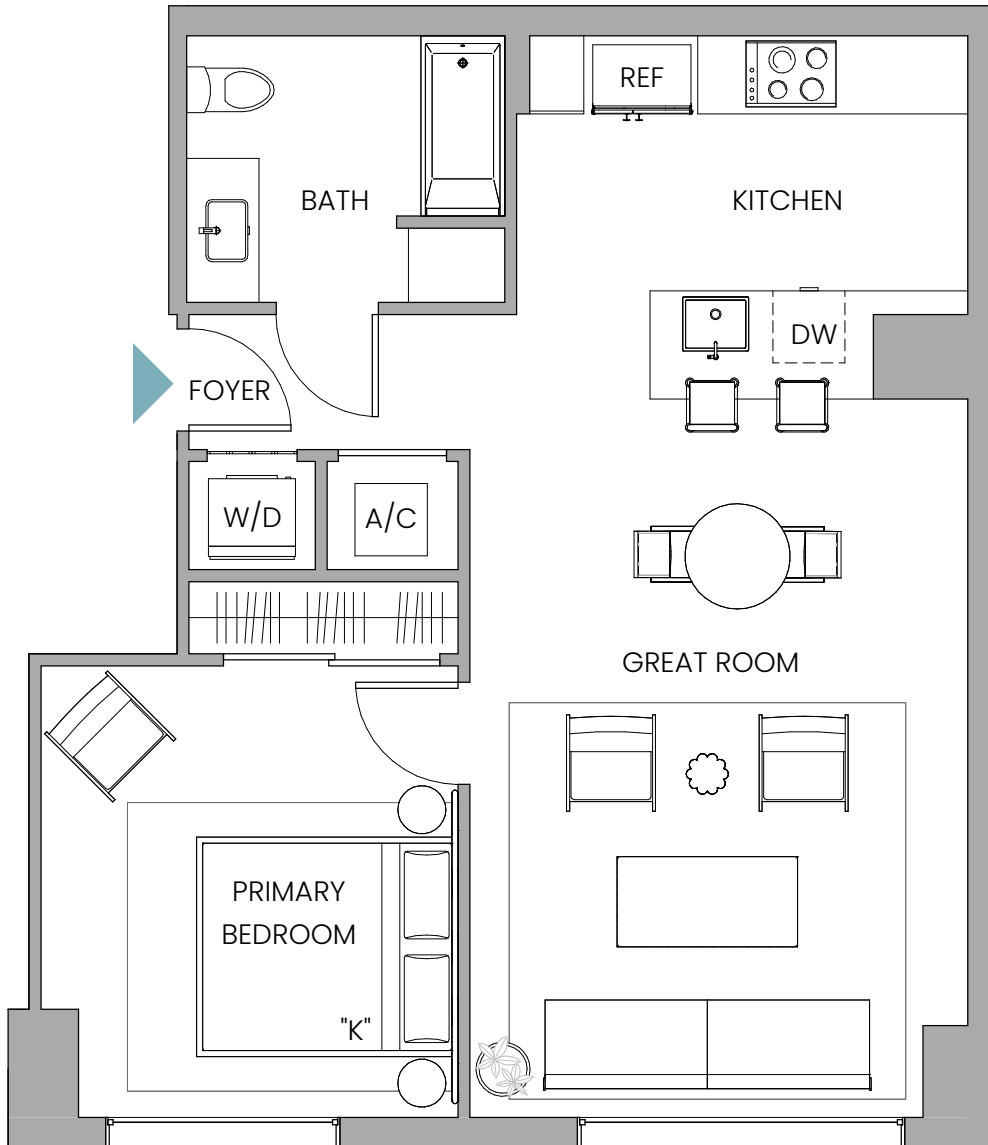
**Note**  
No Balcony on Floor 03-09

Stated dimensions are measured to the exterior boundaries of the exterior walls and the centerline of interior demising walls and in fact vary from the dimensions that would be determined by using the description and definition of the "Unit" set forth in the Declaration (which generally only includes the interior airspace between the perimeter walls and includes interior structural components). For your reference, the area of the Unit, determined in accordance with those defined unit boundaries, is 647 sq ft / 60 sq m. Note that measurements of rooms set forth on this floor plan are generally taken at the greatest points of each given room (as if the room were a perfect rectangle), without regard for any cutouts. Accordingly, the area of the actual room will typically be smaller than the product obtained by multiplying the stated length times width. All dimensions are approximate and may vary with actual construction, and all floor plans and development plans are subject to change.

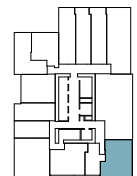
# UNIT WA24

## Line 13

1 Bedroom | 1 Bathroom  
INTERIOR 773 SQ FT / 72 SQ M



FLOORS 03-05



Stated dimensions are measured to the exterior boundaries of the exterior walls and the centerline of interior demising walls and in fact vary from the dimensions that would be determined by using the description and definition of the "Unit" set forth in the Declaration (which generally only includes the interior airspace between the perimeter walls and includes interior structural components). For your reference, the area of the Unit, determined in accordance with those defined unit boundaries, is 773 sq ft / 72 sq m. Note that measurements of rooms set forth on this floor plan are generally taken at the greatest points of each given room (as if the room were a perfect rectangle), without regard for any cutouts. Accordingly, the area of the actual room will typically be smaller than the product obtained by multiplying the stated length times width. All dimensions are approximate and may vary with actual construction, and all floor plans and development plans are subject to change.